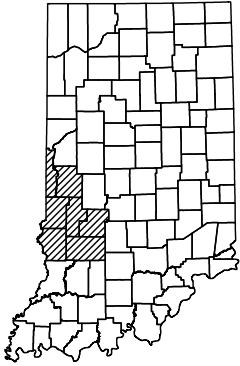


VARIOUS
COUNTIES



STATE OF INDIANA
INDIANA DEPARTMENT OF NATURAL RESOURCES
DIVISION OF RECLAMATION

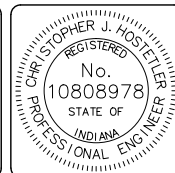


ABANDONED COAL MINE
RESTORATION

NORTHERN MAINTENANCE
VARIOUS SITES

CONTRACT DEL1815208566/E009-228
CLAY, GREENE, SULLIVAN, PARKE, OWEN,
VERMILLION, AND VIGO COUNTIES

SCOPE OF WORK INCLUDES:
DITCH CONSTRUCTION
SEEP DRAIN CONSTRUCTION
SUBSIDENCE FILL



CERTIFIED BY: Christopher J. Hostetler 3/22/18
ENGINEERING SUPERVISOR DATE
APPROVED BY: M. D. E. C. 3/22/18
DIRECTOR, DIVISION OF RECLAMATION DATE

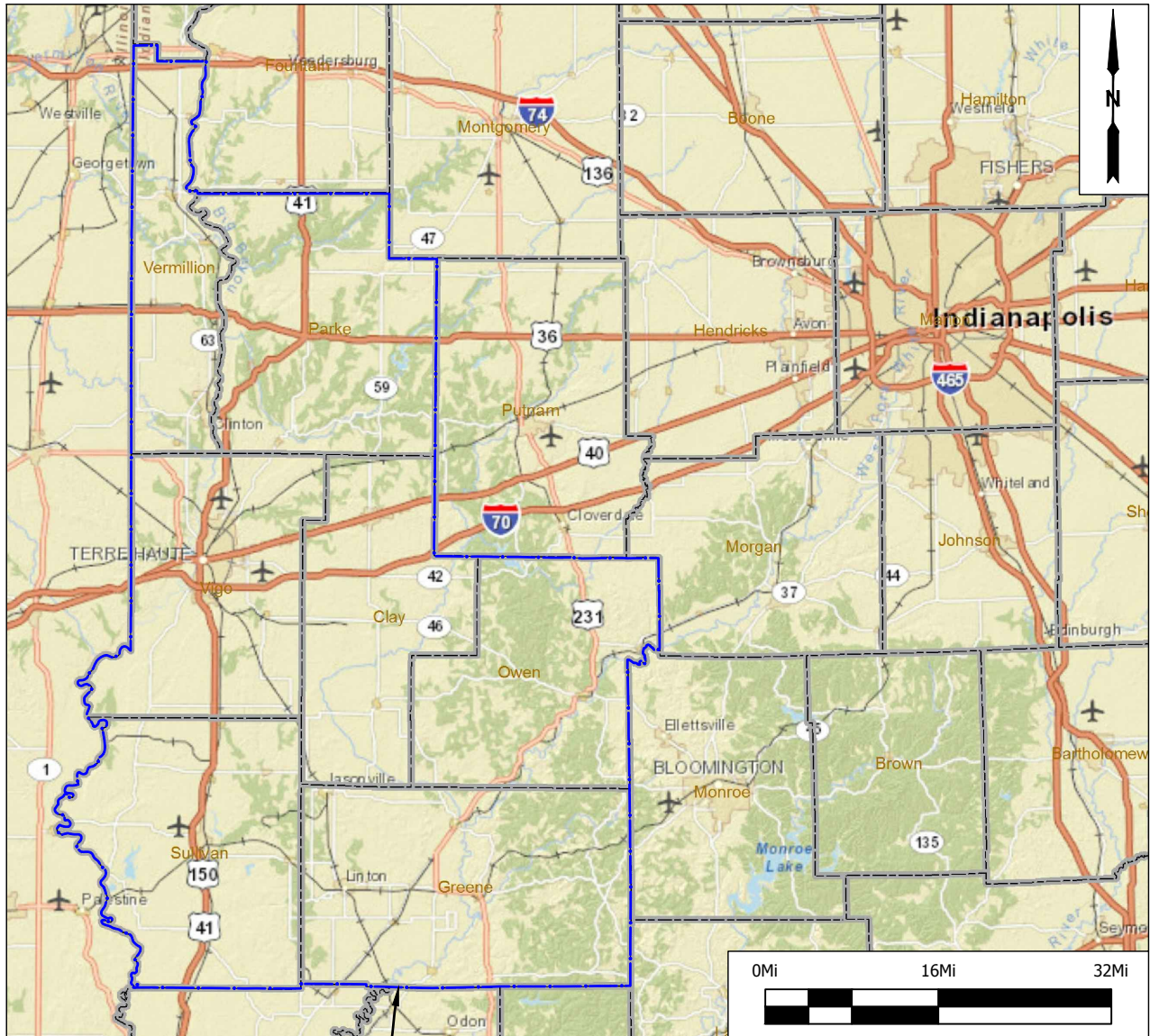
GENERAL NOTES

2010 AML Standard Specifications shall be used with this project

Erosion control blanket, riprap, aggregate, and other materials placed in ditches as directed will be paid for separately in accordance with the schedule of supplemental unit prices.

INDEX

SHEET NO.	SHEET TITLE
1	TITLE
2	INDEX & LOCATION MAP
3	WORK ORDER
4 - 8	DETAILS



UPC North

Location Map

OpenStreetMap©



DATE MADE

1/12/2018

INDEX & LOCATION MAP

DESIGNED BY

C.J.H.

SCALE

AS NOTED

SHEET

2 OF 8

DATE REVISED

3/12/2018 3:13:43 PM

STATE OF INDIANA
DEPARTMENT OF NATURAL RESOURCES
DIVISION OF RECLAMATION

DRAWN BY

C.J.H.

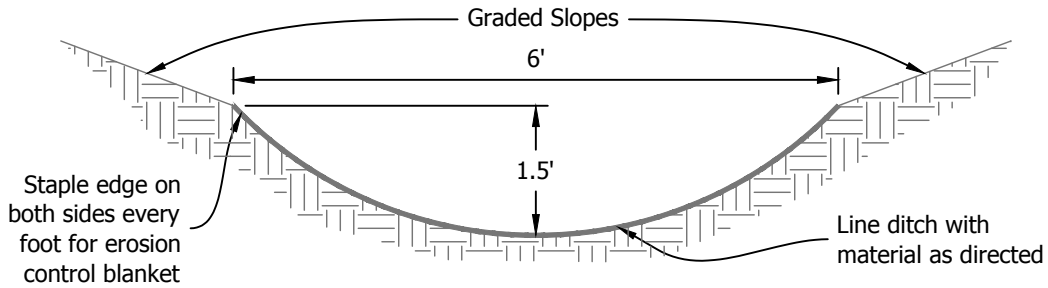
PROJECT

E009-228

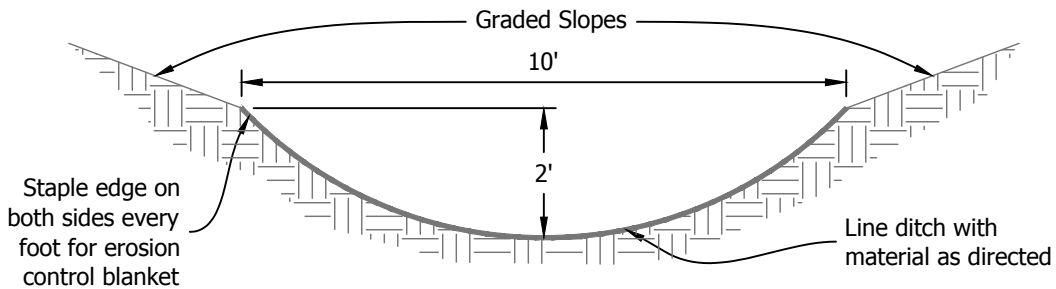
SITE

VARIOUS

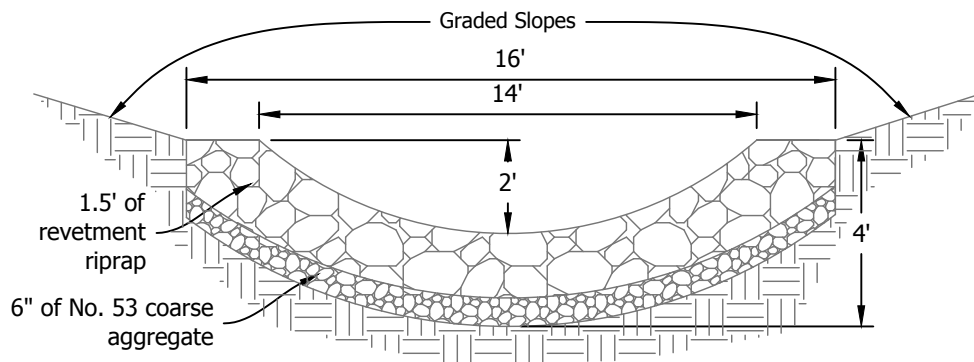
Type I Ditch



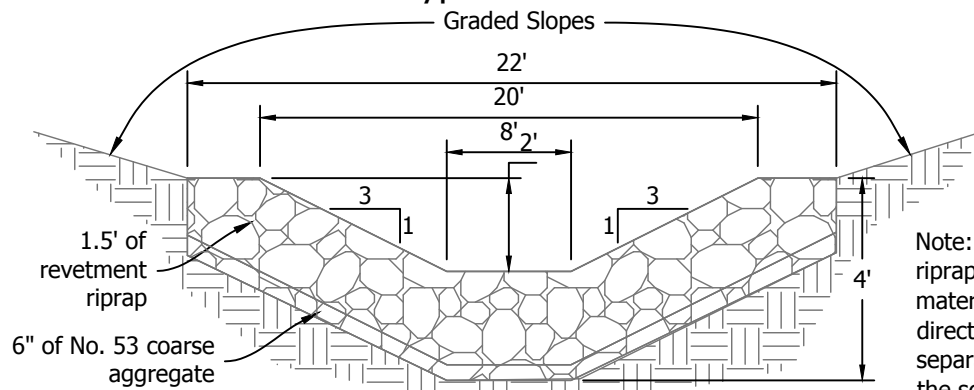
Type II Ditch



Type III Ditch



Type IV Ditch



Note: Erosion control blanket, riprap, aggregate, and other materials placed in ditches as directed will be paid for separately in accordance with the schedule of supplemental unit prices.



DATE MADE
1/12/2018

DETAILS - DITCH TYPES

DESIGNED BY
C.J.H.

SCALE
NOT TO SCALE

SHEET
4 OF 8

DATE REVISED
3/12/2018 3:13:43 PM

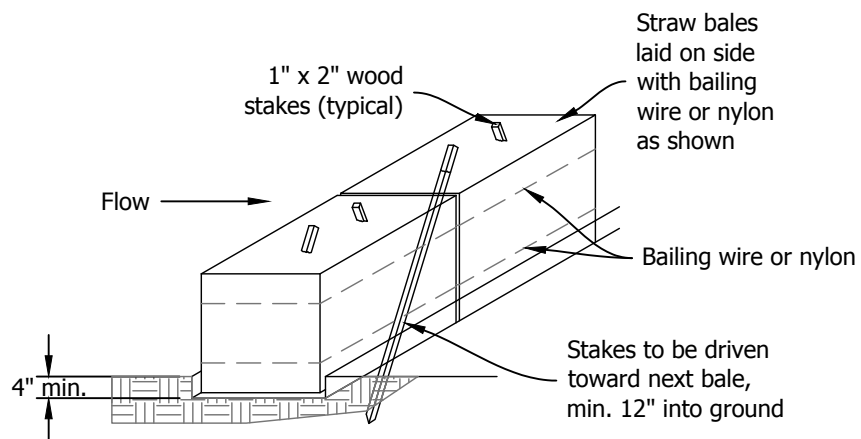
STATE OF INDIANA
DEPARTMENT OF NATURAL RESOURCES
DIVISION OF RECLAMATION

DRAWN BY
C.J.H.

PROJECT
E009-228

SITE
VARIOUS

Temporary Check Dam, Straw Bale



DATE MADE
1/12/2018

DETAILS - TEMPORARY CHECK DAM,
STRAW BALES

DESIGNED BY
C.J.H.

SCALE
NOT TO SCALE

SHEET
5 OF 8

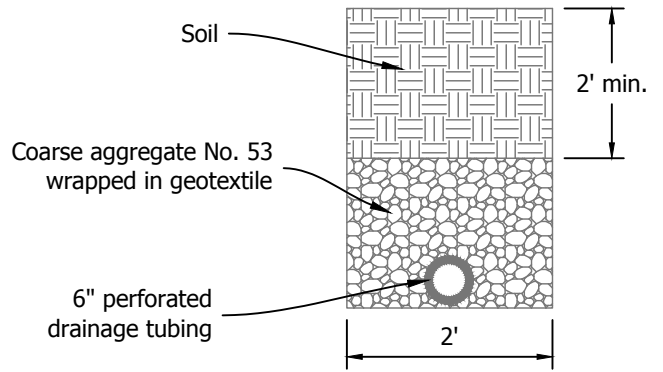
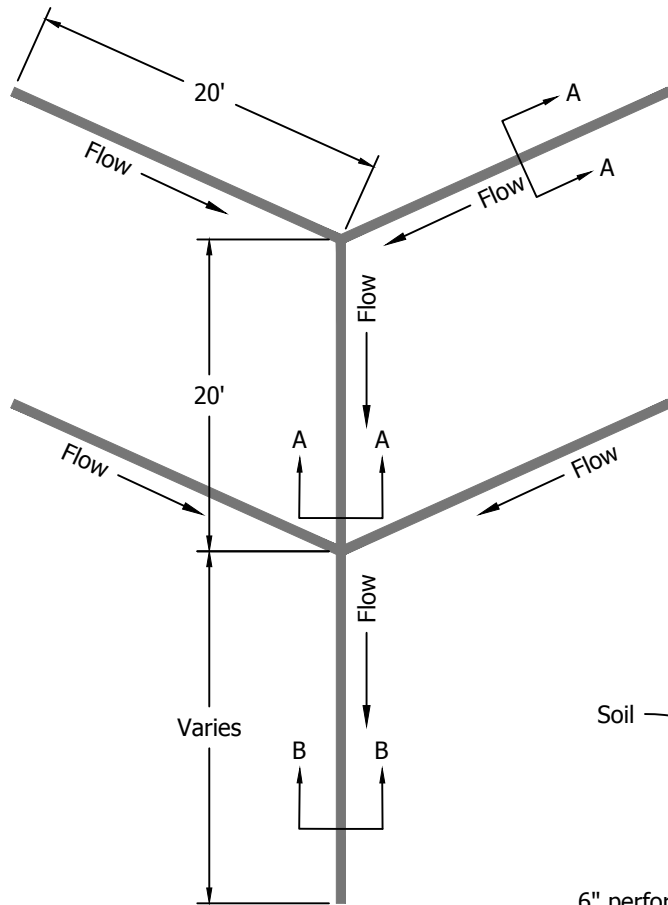
DATE REVISED
3/12/2018 3:13:43 PM

STATE OF INDIANA
DEPARTMENT OF NATURAL RESOURCES
DIVISION OF RECLAMATION

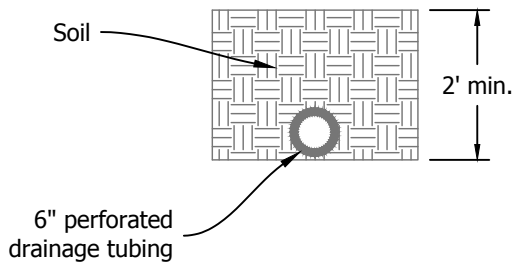
DRAWN BY
C.J.H.

PROJECT
E009-228

SITE
VARIOUS



Lateral Detail
A-A



Collection Pipe
B-B



DATE MADE
1/12/2018

DATE REVISED
3/12/2018 3:13:43 PM

DETAILS - TILE DRAIN

STATE OF INDIANA
DEPARTMENT OF NATURAL RESOURCES
DIVISION OF RECLAMATION

DESIGNED BY
C.J.H.

DRAWN BY
C.J.H.

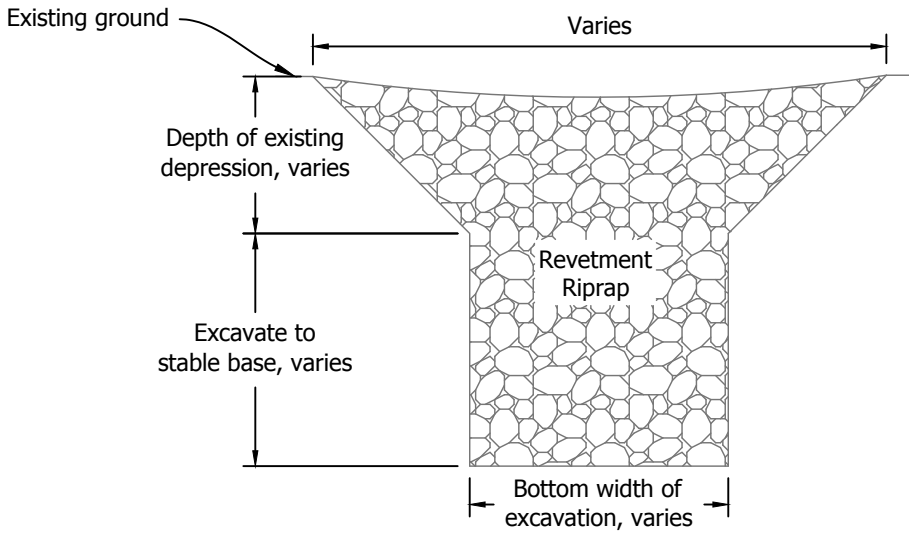
SCALE
NOT TO SCALE

PROJECT
E009-228

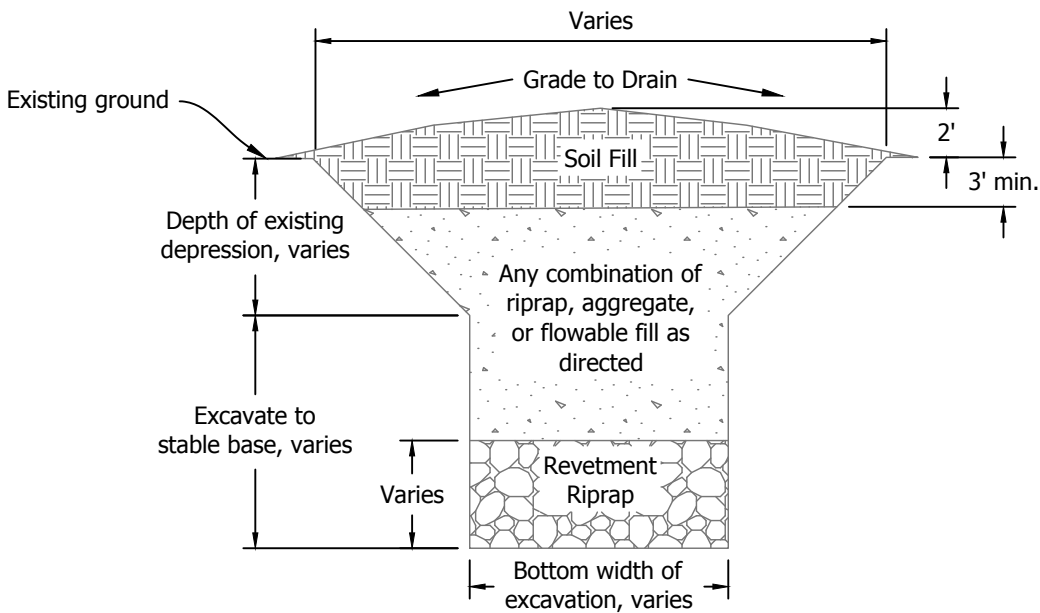
SHEET
6 OF 8

SITE
VARIOUS

Typical Subsidence Backfill Type A



Typical Subsidence Backfill Type B



DATE MADE
1/12/2018

DATE REVISED
3/12/2018 3:13:43 PM

DETAILS - SUBSIDENCE BACKFILL

STATE OF INDIANA
DEPARTMENT OF NATURAL RESOURCES
DIVISION OF RECLAMATION

DESIGNED BY
C.J.H.

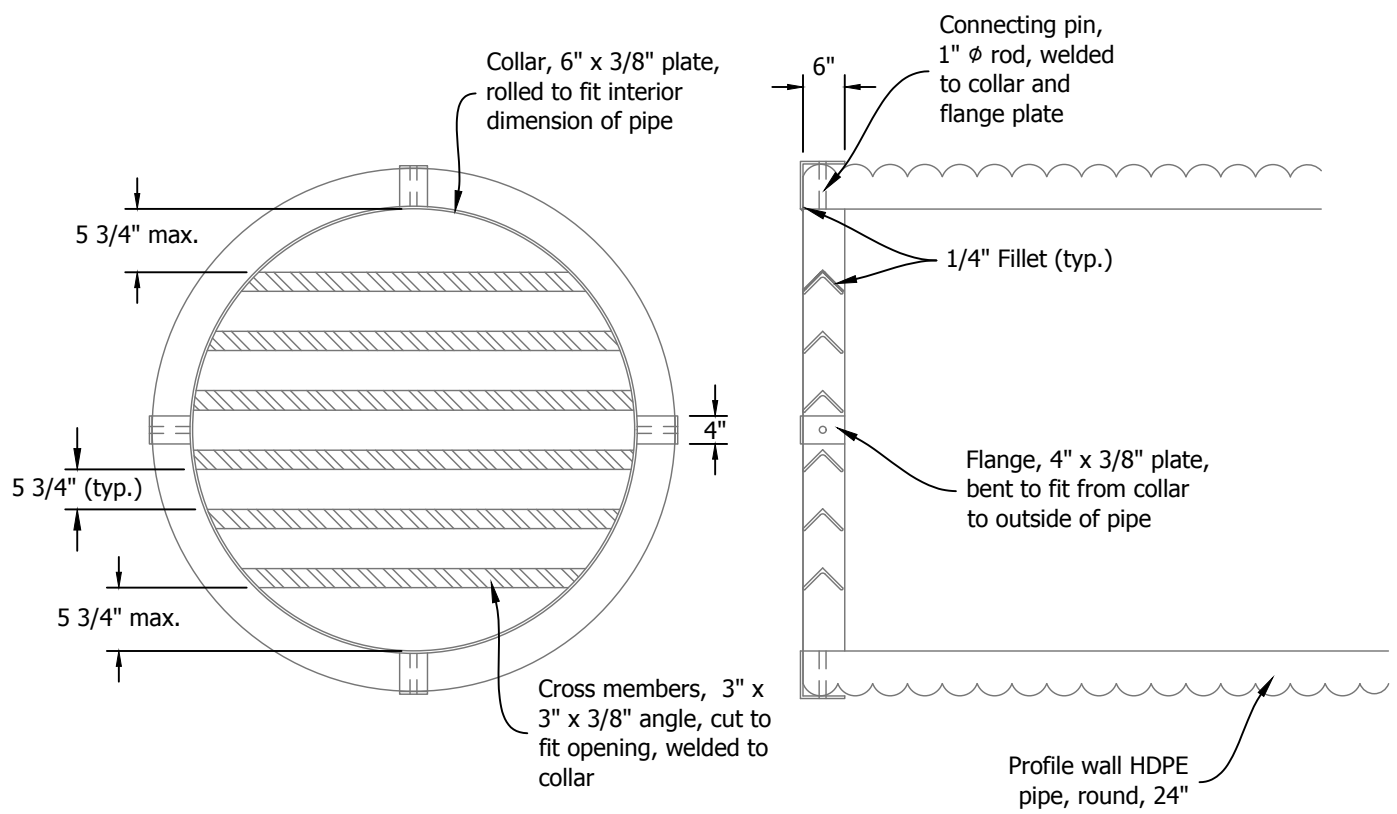
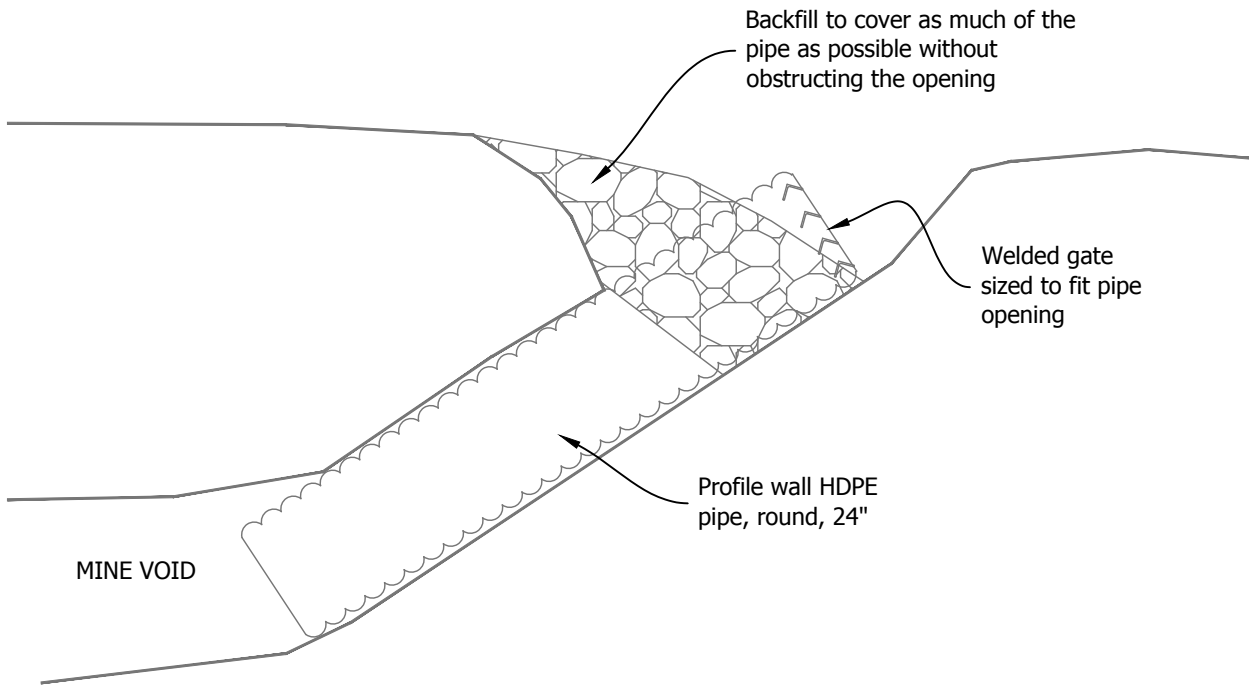
DRAWN BY
C.J.H.

SCALE
NOT TO SCALE

PROJECT
E009-228

SHEET
7 OF 8

SITE
VARIOUS



Note: Entire welded gate shall be cleaned and painted with rust inhibiting primer, then top coated with high quality enamel paint (black or brown) prior to installation.



DATE MADE
1/12/2018

DETAILS - CULVERT BAT GATE

DESIGNED BY
C.J.H.

SCALE
NOT TO SCALE

SHEET
8 OF 8

DATE REVISED
3/12/2018 3:13:43 PM

STATE OF INDIANA
DEPARTMENT OF NATURAL RESOURCES
DIVISION OF RECLAMATION

DRAWN BY
C.J.H.

PROJECT
E009-228

SITE
VARIOUS