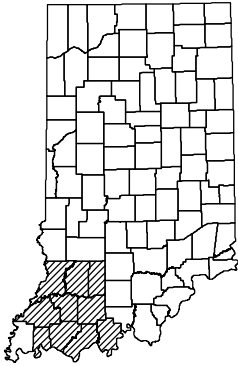


VARIOUS
COUNTIES



STATE OF INDIANA
INDIANA DEPARTMENT OF NATURAL RESOURCES
DIVISION OF RECLAMATION



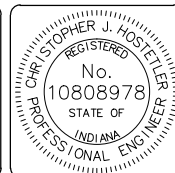
ABANDONED COAL MINE
RESTORATION

SOUTHERN MAINTENANCE
VARIOUS SITES

CONTRACT DEL2115208303/E009-231

DAVIESS, DUBOIS, GIBSON, KNOX, MARTIN, PERRY, PIKE,
SPENCER, VANDERBURGH, AND WARRICK COUNTIES

SCOPE OF WORK INCLUDES:
DITCH CONSTRUCTION
SEEP DRAIN CONSTRUCTION
SUBSIDENCE FILL



CERTIFIED BY: Christopher J. Hostetler 2/8/2021
ENGINEERING SUPERVISOR DATE

APPROVED BY: [Signature] 2/8/2021
DIRECTOR, DIVISION OF RECLAMATION DATE

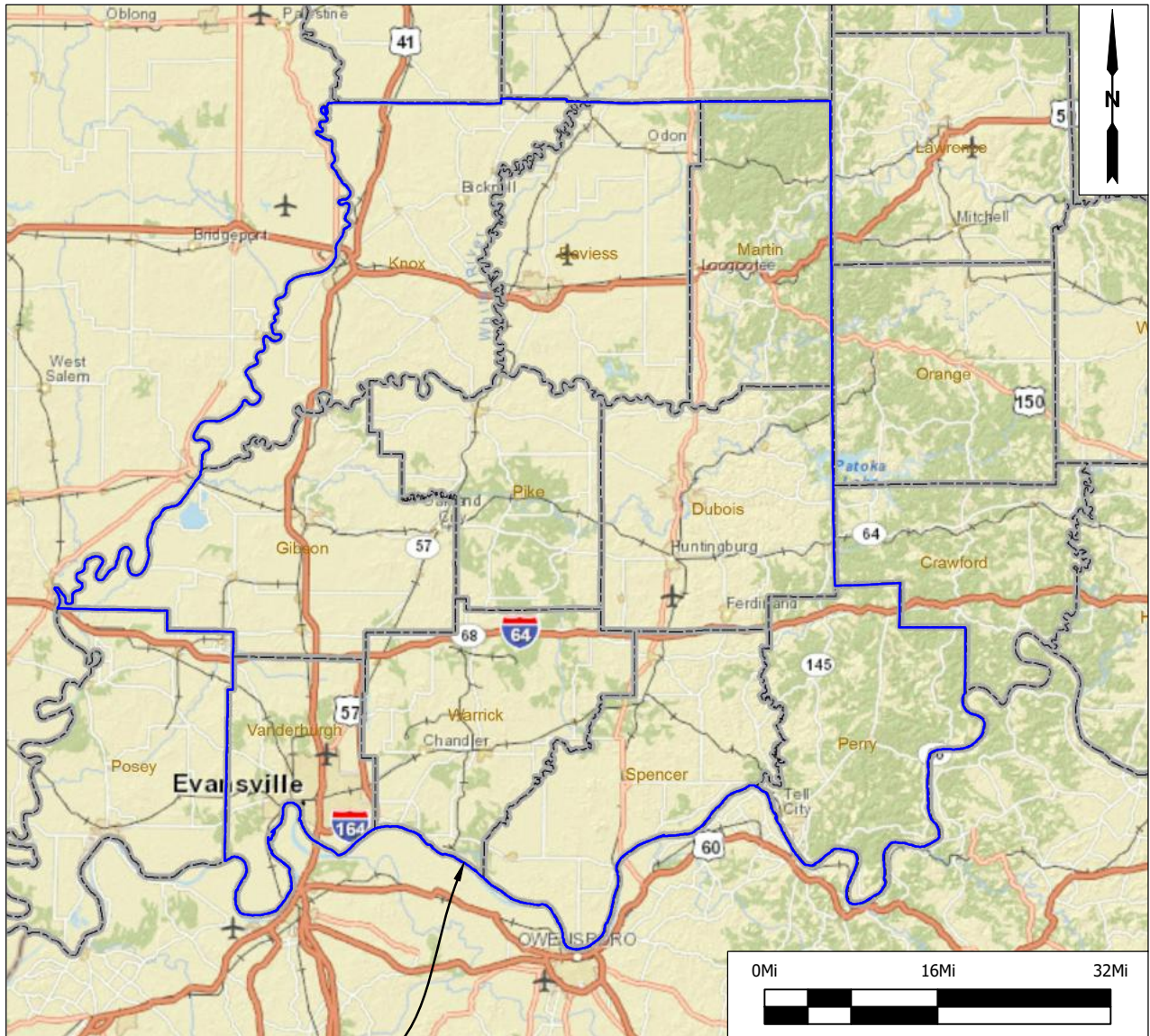
GENERAL NOTES

2010 AML Standard Specifications shall be used with this project

Erosion control blanket, riprap, aggregate, and other materials placed in ditches as directed will be paid for separately in accordance with the schedule of supplemental unit prices.

INDEX

SHEET NO.	SHEET TITLE
1	TITLE
2	INDEX & LOCATION MAP
3	WORK ORDER
4 - 8	DETAILS



UPC South

Location Map

OpenStreetMap©



DATE MADE

12/21/2020

DATE REVISED

2/8/2021 10:32:21 AM

INDEX & LOCATION MAP

STATE OF INDIANA
DEPARTMENT OF NATURAL RESOURCES
DIVISION OF RECLAMATION

DESIGNED BY

C.J.H.

DRAWN BY

C.J.H.

SCALE

AS NOTED

PROJECT

E009-231

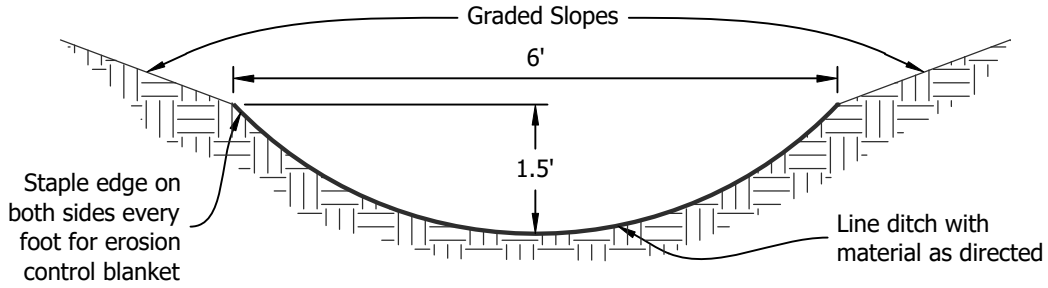
SHEET

2 OF 8

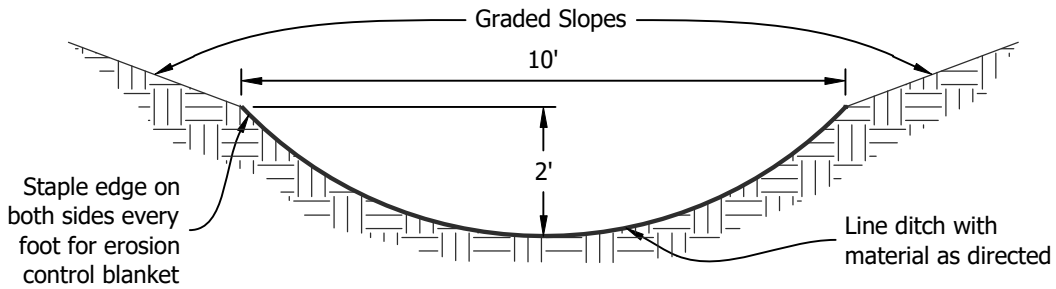
SITE

VARIOUS

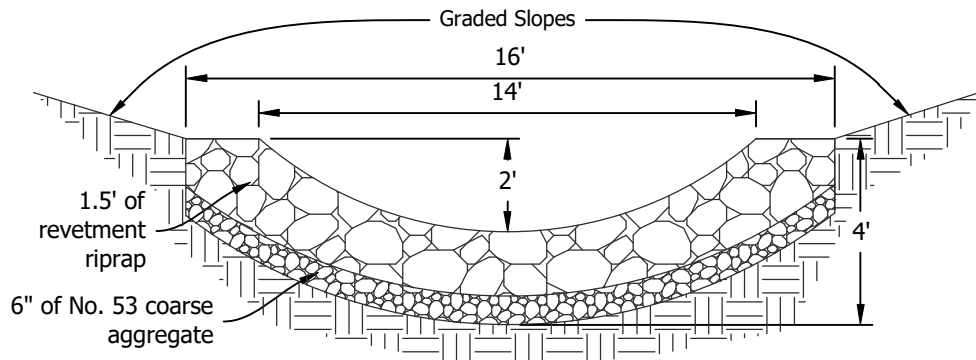
Type I Ditch



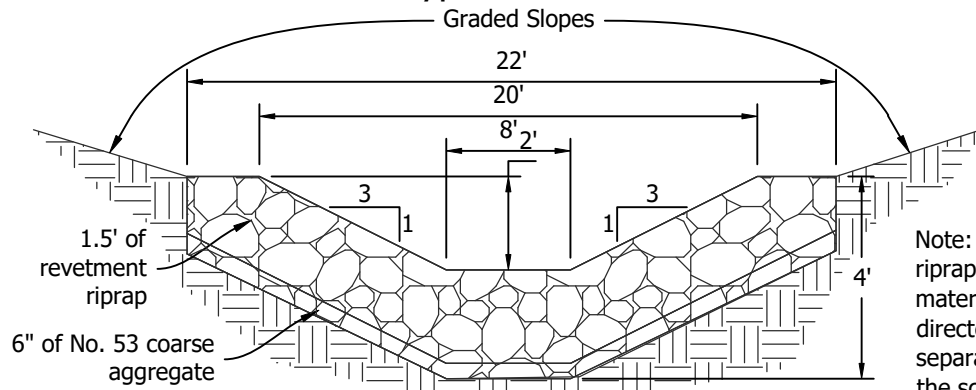
Type II Ditch



Type III Ditch



Type IV Ditch



Note: Erosion control blanket, riprap, aggregate, and other materials placed in ditches as directed will be paid for separately in accordance with the schedule of supplemental unit prices.



DATE MADE

12/21/2020

DATE REVISED

2/8/2021 10:32:21 AM

DETAILS - DITCH TYPES

STATE OF INDIANA
DEPARTMENT OF NATURAL RESOURCES
DIVISION OF RECLAMATION

DESIGNED BY

C.J.H.

DRAWN BY

C.J.H.

SCALE

NOT TO SCALE

PROJECT

E009-231

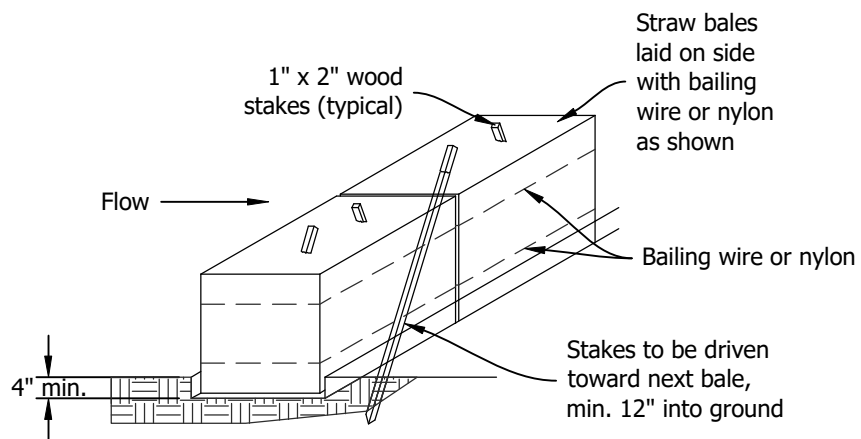
SHEET

4 OF 8

SITE

VARIOUS

Temporary Check Dam, Straw Bale



DATE MADE
12/21/2020

DETAILS - TEMPORARY CHECK DAM,
STRAW BALES

DESIGNED BY
C.J.H.

SCALE
NOT TO SCALE

SHEET
5 OF 8

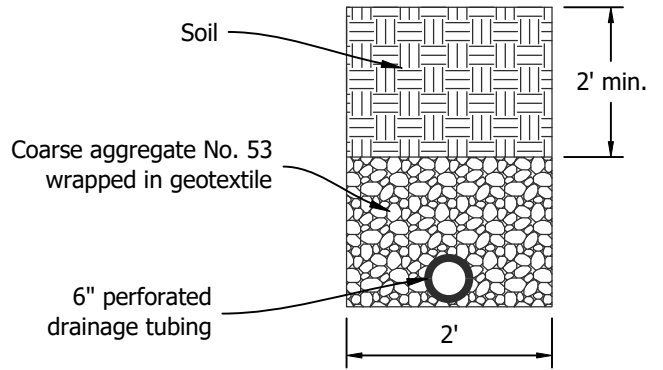
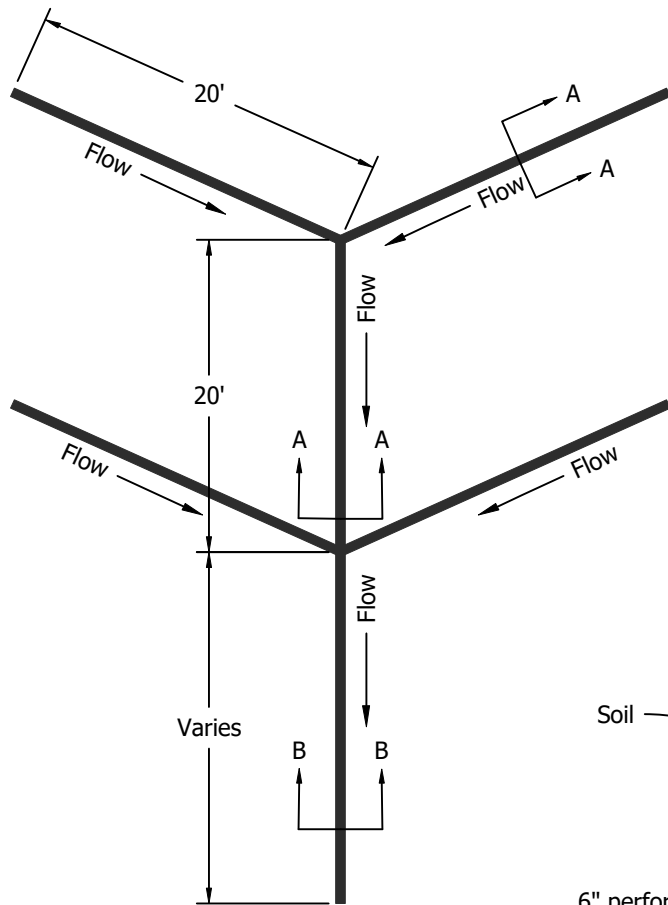
DATE REVISED
2/8/2021 10:32:21 AM

STATE OF INDIANA
DEPARTMENT OF NATURAL RESOURCES
DIVISION OF RECLAMATION

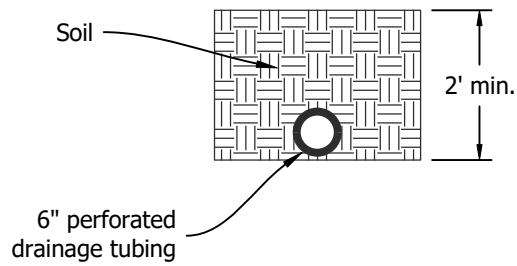
DRAWN BY
C.J.H.

PROJECT
E009-231

SITE
VARIOUS



Lateral Detail
A-A



Collection Pipe
B-B



DATE MADE
12/21/2020

DATE REVISED
2/8/2021 10:32:21 AM

DETAILS - TILE DRAIN

STATE OF INDIANA
DEPARTMENT OF NATURAL RESOURCES
DIVISION OF RECLAMATION

DESIGNED BY
C.J.H.

DRAWN BY
C.J.H.

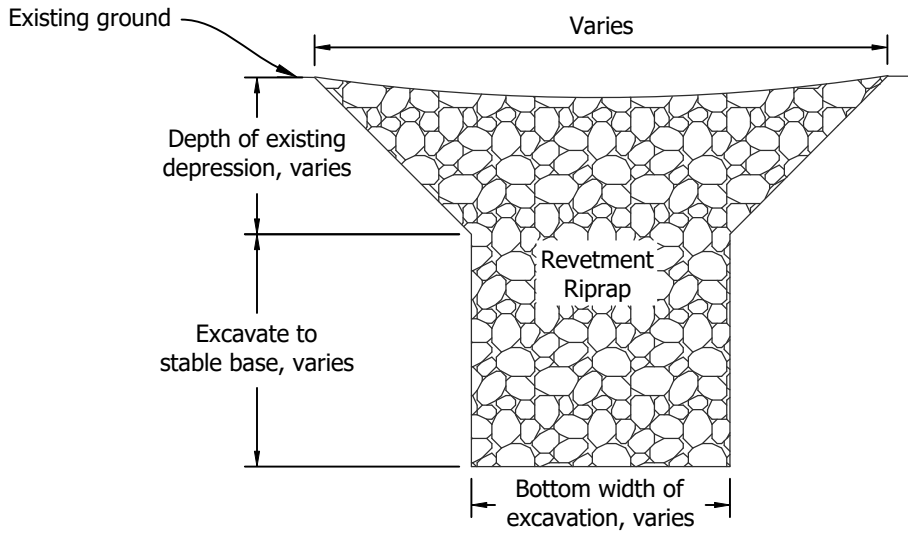
SCALE
NOT TO SCALE

PROJECT
E009-231

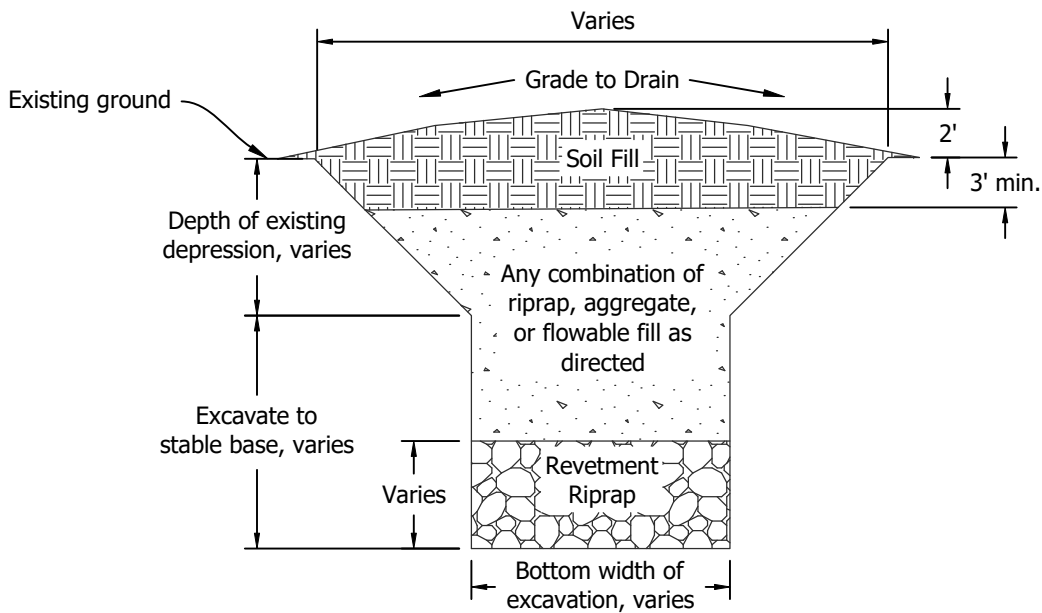
SHEET
6 OF 8

SITE
VARIOUS

Typical Subsidence Backfill Type A



Typical Subsidence Backfill Type B



DATE MADE

12/21/2020

DETAILS - SUBSIDENCE BACKFILL

DESIGNED BY

C.J.H.

SCALE

NOT TO SCALE

SHEET

7 OF 8

DATE REVISED

2/8/2021 10:32:21 AM

STATE OF INDIANA
DEPARTMENT OF NATURAL RESOURCES
DIVISION OF RECLAMATION

DRAWN BY

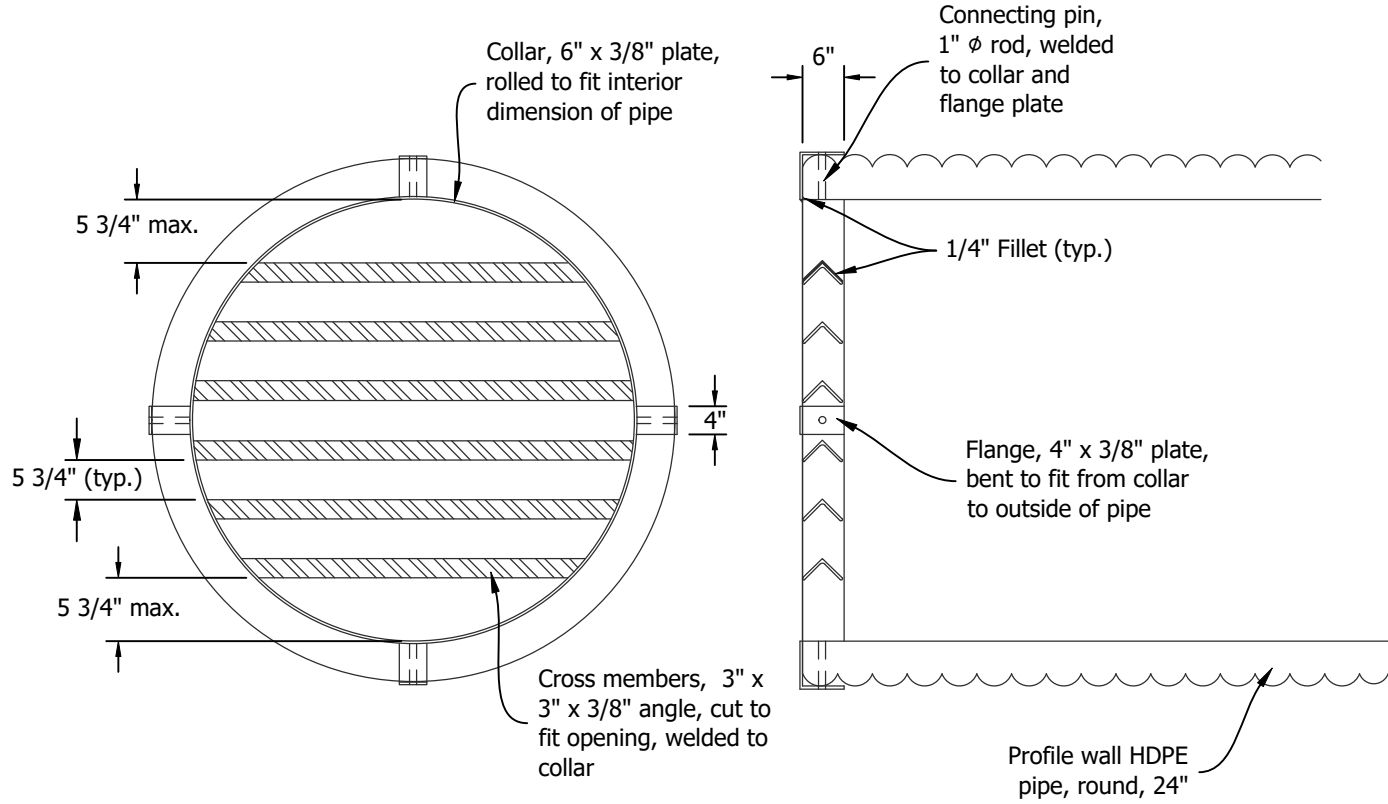
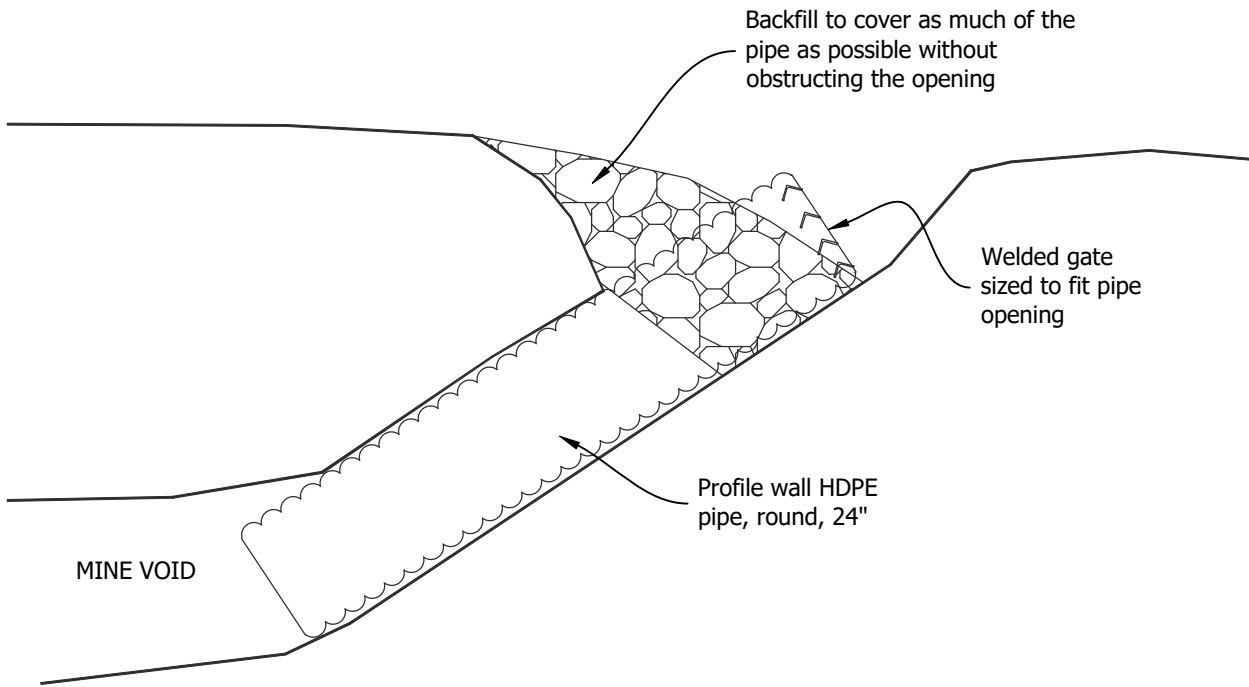
C.J.H.

PROJECT

E009-231

SITE

VARIOUS



Note: Entire welded gate shall be cleaned and painted with rust inhibiting primer, then top coated with high quality enamel paint (black or brown) prior to installation.



DATE MADE
12/21/2020

DETAILS - CULVERT BAT GATE

DESIGNED BY
C.J.H.

SCALE
NOT TO SCALE

SHEET
8 OF 8

DATE REVISED
2/8/2021 10:32:21 AM

STATE OF INDIANA
DEPARTMENT OF NATURAL RESOURCES
DIVISION OF RECLAMATION

DRAWN BY
C.J.H.

PROJECT
E009-231

SITE
VARIOUS