

INDEX	
SHEET NO.	DESCRIPTION
1	TITLE SHEET & INDEX SHEET
2	TYPICAL SECTIONS
3-4	BOAT RAMP DETAILS
5	MAINTENANCE OF TRAFFIC
6-9	PLAN AND PROFILE SHEETS
10	LAYOUT PLAN
11	GRADING PLAN
12	ALTERNATE BID LIMITS
13	EROSION CONTROL
14	CROSS SECTIONS
15	DRIVE SECTIONS

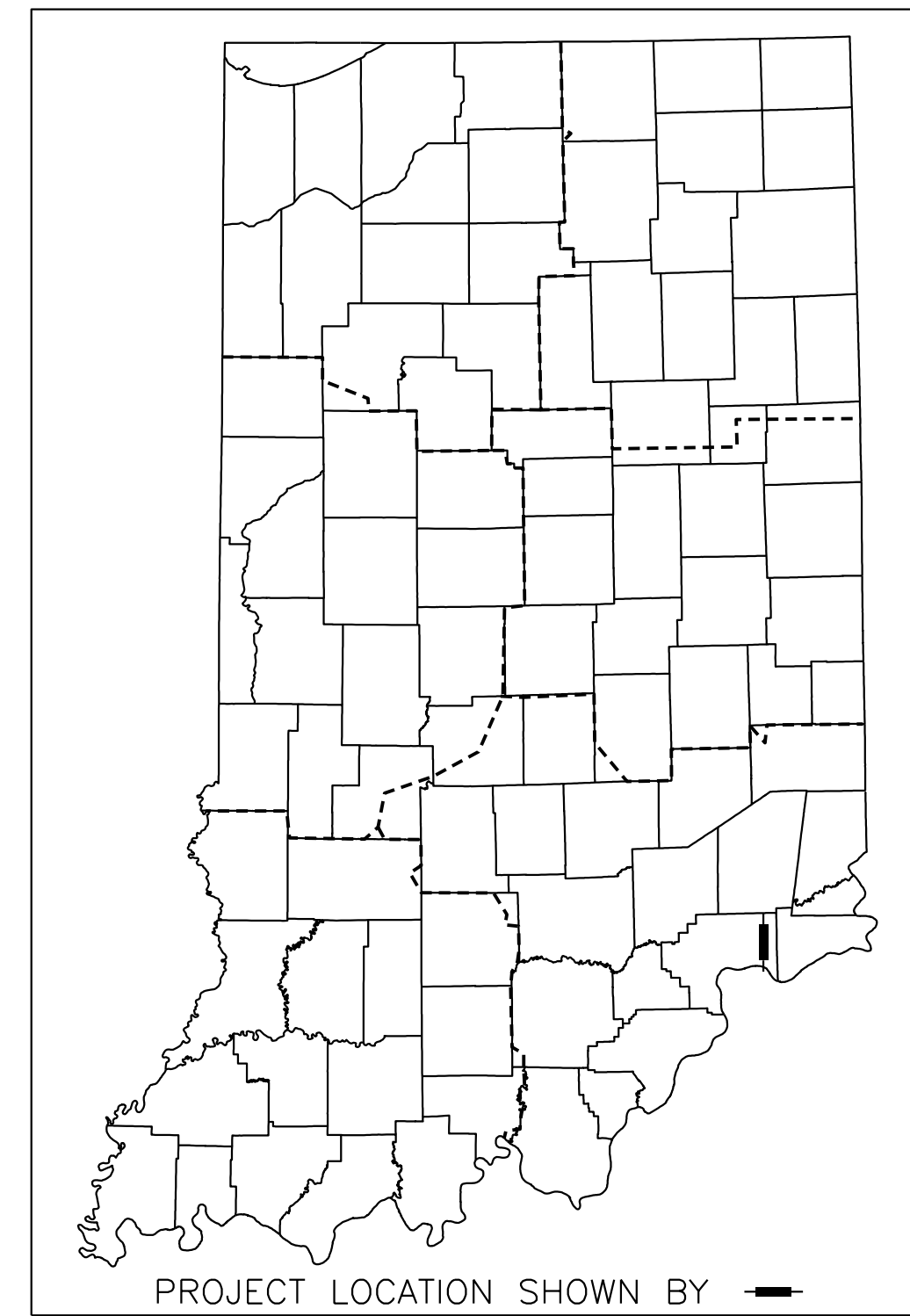
INDIANA DEPARTMENT OF NATURAL RESOURCES

TOWN OF BROOKSBURG

BOAT RAMP PROJECT NO. ENG2002871394

PROJECT DESCRIPTION
CONSTRUCTION OF A BOAT RAMP, & PARKING LOT ON THE OHIO RIVER
IN BROOKSBURG, INDIANA.

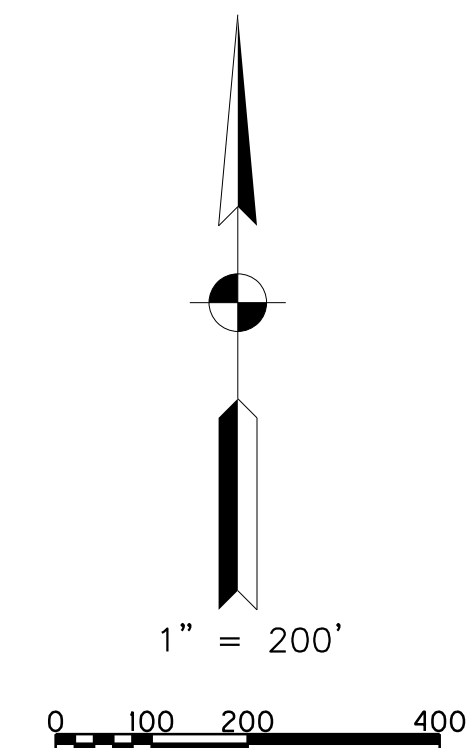
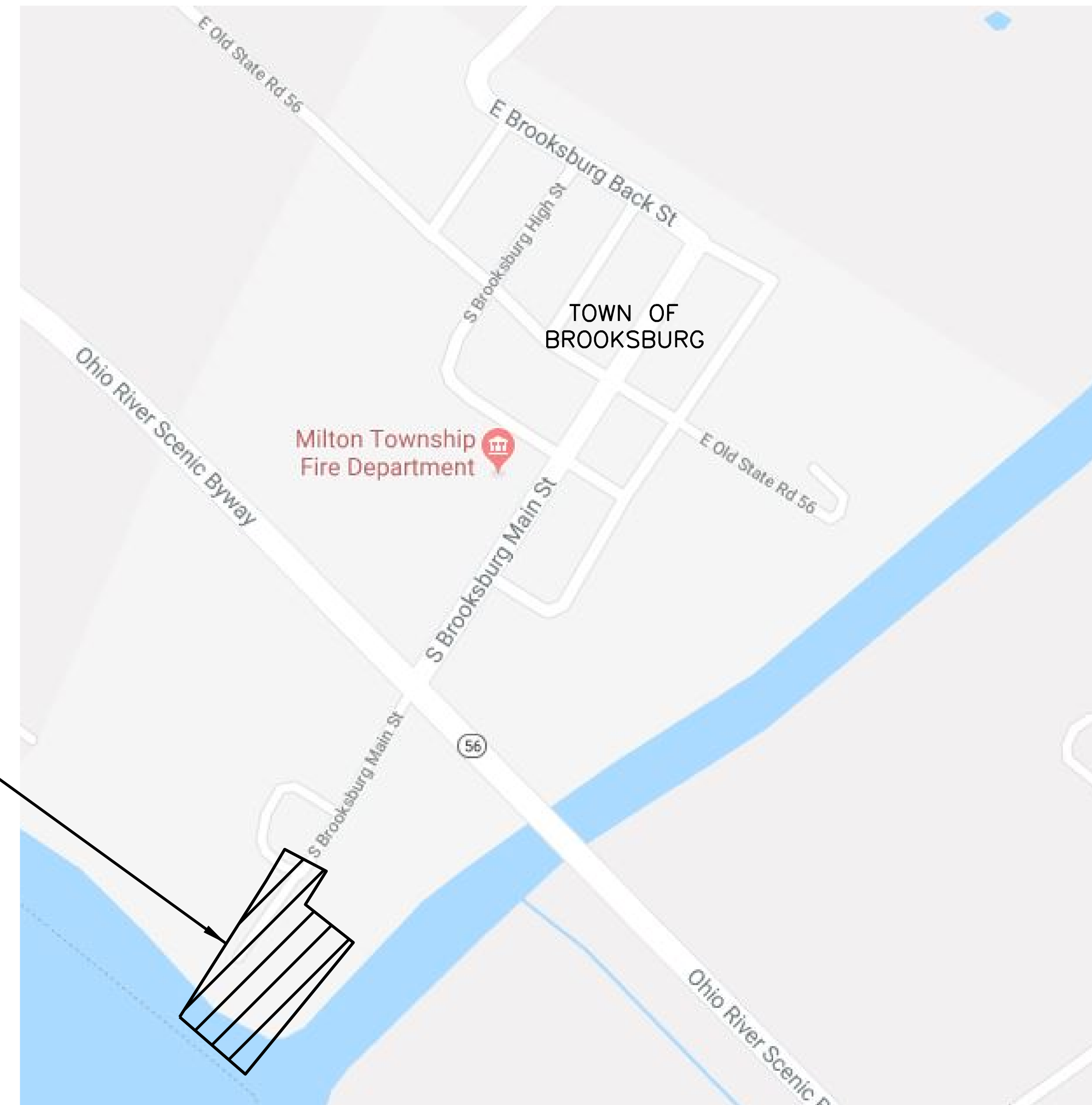
PROJECT LOCATION LATITUDE/LONGITUDE:
LATITUDE: 38°43'59" N
LONGITUDE: 85°14'45" W



UTILITIES	
Town of Brooksburg Pam Foster Clerk Treas PO Box 35 Madison, IN 47250 812-701-2147	Town of Brooksburg Scott Williams WWTP operator 812-801-1389
Canaan Utilities Corp Kim Partin 8990 N Canaan Main St Madison, IN 47250 812-839-4000 caanaanwater@seidata.com	Frontier Communications Utility Requests (For Initial Notices Only) utilitycordreq@ftr.com
Spectrum - Louisville Kevin Mercer Construction Coordinator 10168 Linn Station Rd, Ste 120 Louisville, KY 40223 502-817-5055 kevin.mercer@charter.com	SE Indiana REMC Perry Hardy Supt of Staking PO Box 196/ 712 S Buckeye St Osgood, IN 47037 812-689-4111 perryh@seiremc.com
FOR UNDERGROUND UTILITIES, CALL: WITHIN INDIANA 1-800-382-5544 (TOLLFREE) FROM OUTSIDE INDIANA 1-800-428-5200 (TOLLFREE)	

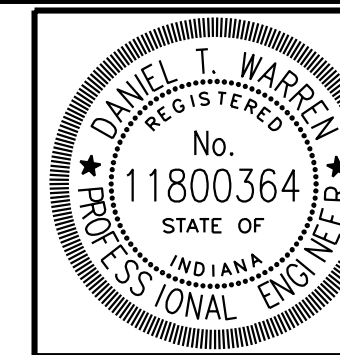
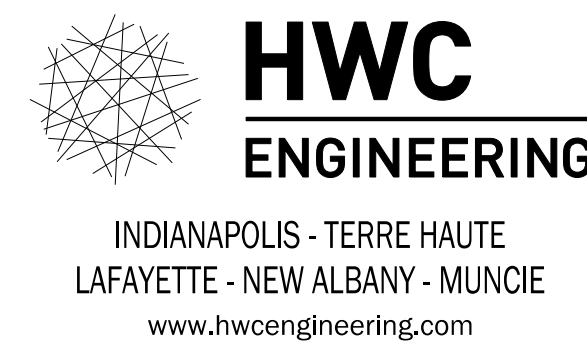
NOTE: ANY QUANTITIES INCLUDED IN THIS PLAN SET ARE FOR INFORMATIONAL PURPOSES ONLY.

THE CONTRACTOR SHALL VISIT THE SITE TO DETERMINE THE QUANTITIES REQUIRED TO COMPLETE THE JOB. THE CONTRACT SHALL BE BID AS LUMP SUM.



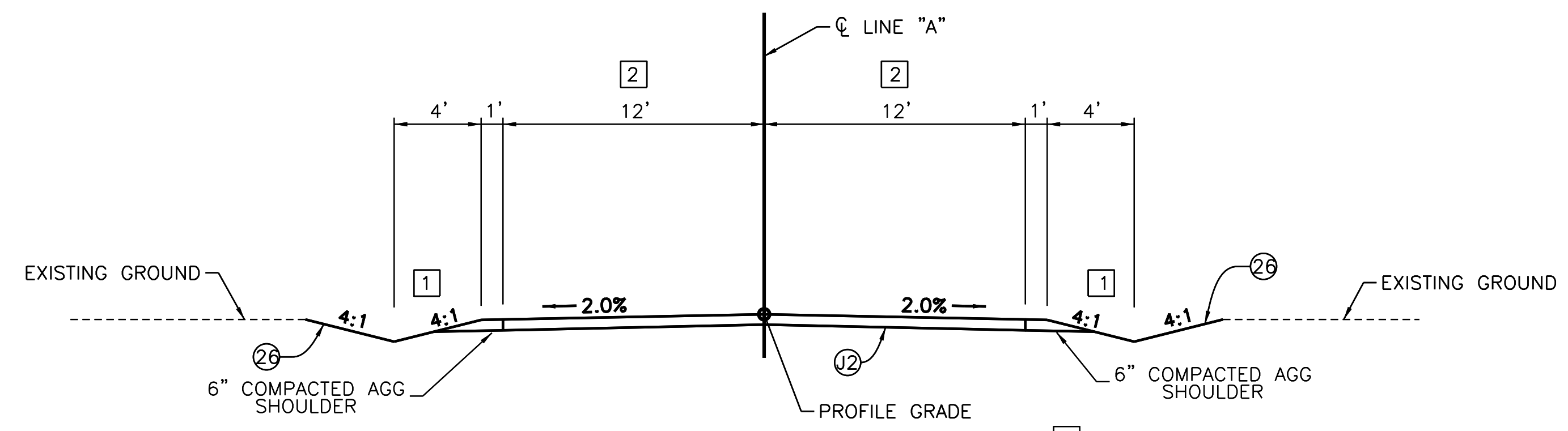
INDIANA DEPARTMENT OF TRANSPORTATION
STANDARD SPECIFICATIONS DATED 2020
TO BE USED WITH THESE PLANS

W:\DNR\2018-042 IDNR- Brooksburg Boat Ramp\Design\CAD\RTTitle.dgn
 2/24/2020 REVISION 3.0
 4:51:07 PM PDP:ahlg
 220



PLANS PREPARED BY:	HWC ENGINEERING	812-913-6420 PHONE NUMBER
CERTIFIED BY:	<i>D. T. Warren</i>	2-24-20 DATE

CONTRACT	BRIDGE FILE
	DESIGNATION
SHEETS	
1	of 15
PROJECT	
ENG2002871394	

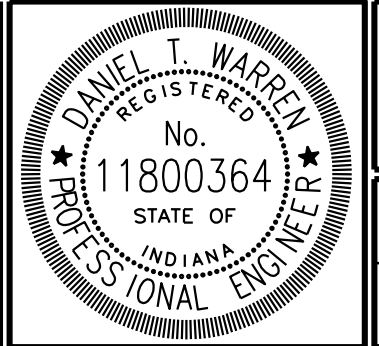


TYPICAL SECTION LINE "A"
 STA. 100+31.42 TO STA. 101+55.18

1 SEE CROSS SECTIONS FOR SLOPES OUTSIDE OF PAVEMENT LIMITS
 2 SEE CROSS SECTIONS + PLANVIEW FOR PAVEMENT WIDTHS

W:\DNR\2018-042 IDNR- Brooksburg Boat Ramp\Design\CAD\Typical Sections.dgn
 2/24/2020 REVISION 3.0
 4:51:12 PM PDP:ahdg
 NGD:tlb

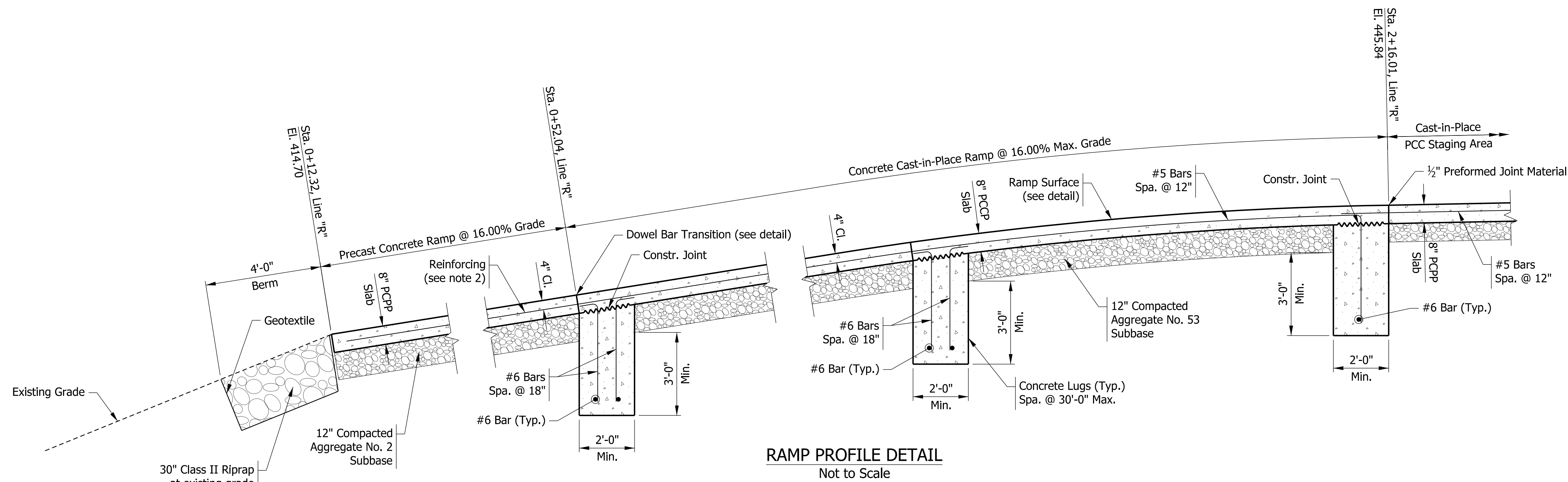
(C)	PCCP 4"	(J)	6" AGGREGATE SHOULDER
(C1)	PCCP 8"	(R)	CURB RAMP, CONCRETE
(F)	SIDEWALK, CONCRETE, 4 IN.		
(J2)	AGGREGATE 6"		
(26)	SEEDING		



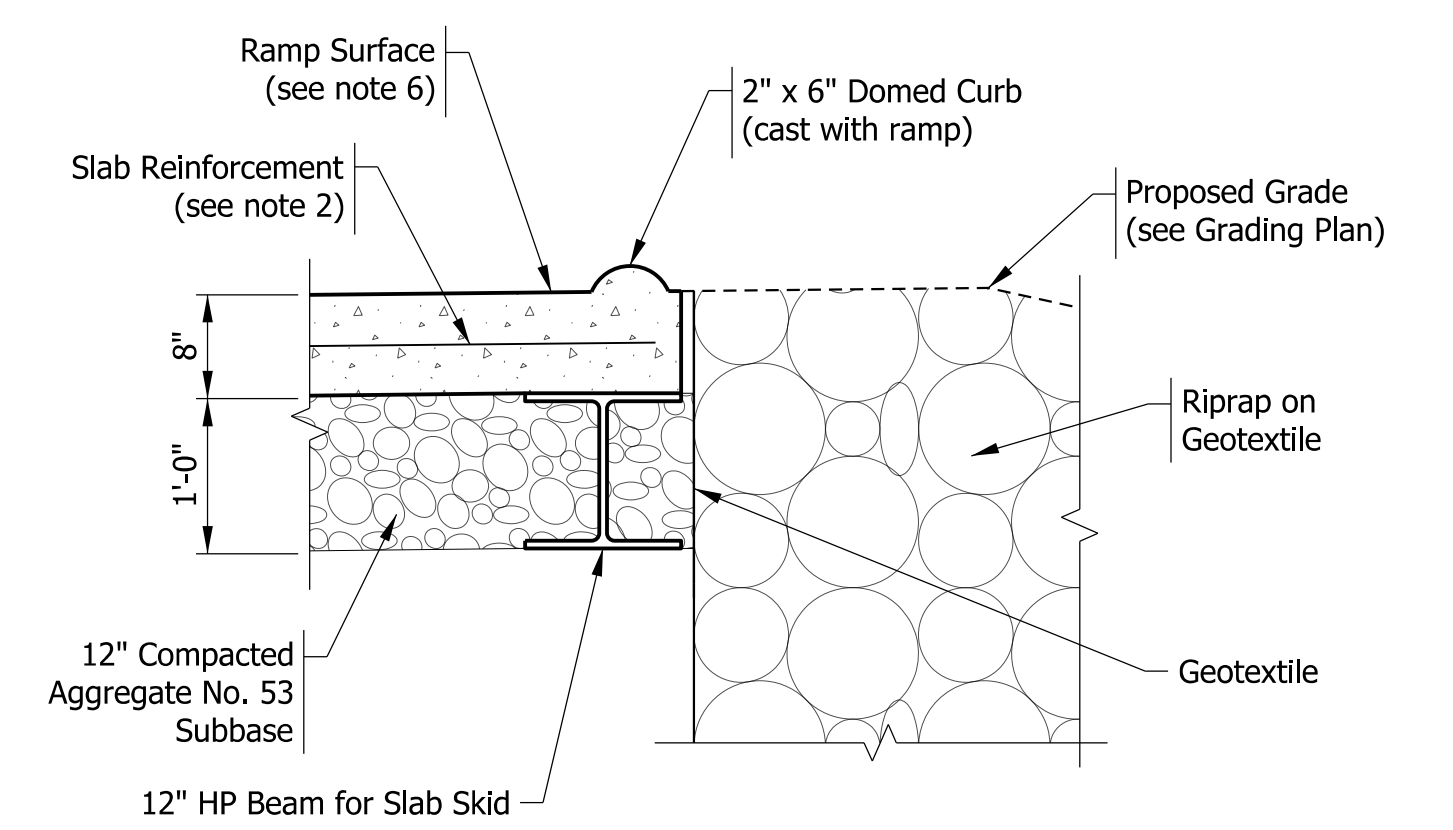
RECOMMENDED FOR APPROVAL	<i>D. Warren</i>	2-24-20
	DESIGN ENGINEER	DATE
DESIGNED: DW	DRAWN: KM	
CHECKED: PL	CHECKED: DW	

INDIANA DEPARTMENT OF NATURAL RESOURCES	
TYPICAL SECTIONS	

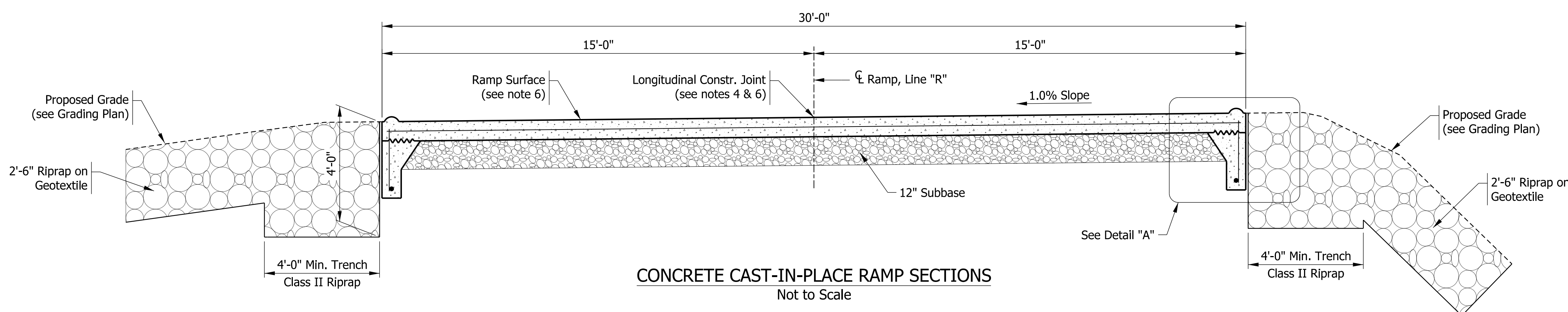
HORIZONTAL SCALE	BRIDGE FILE
N/A	
VERTICAL SCALE	DESIGNATION
	?
SURVEY BOOK	SHEETS
	2 of 15
CONTRACT	PROJECT
	ENG2002871394



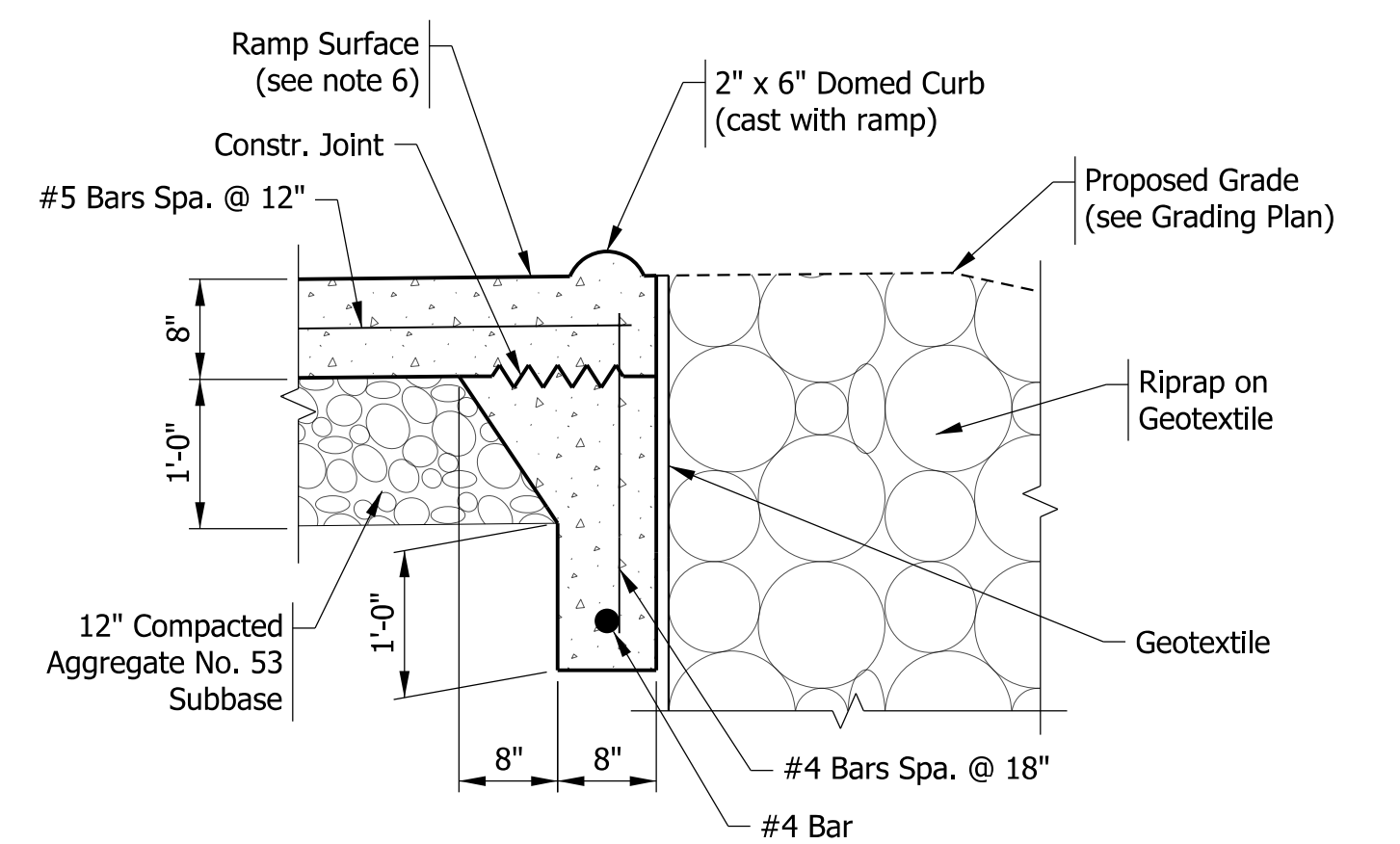
RAMP PROFILE DETAIL
Not to Scale



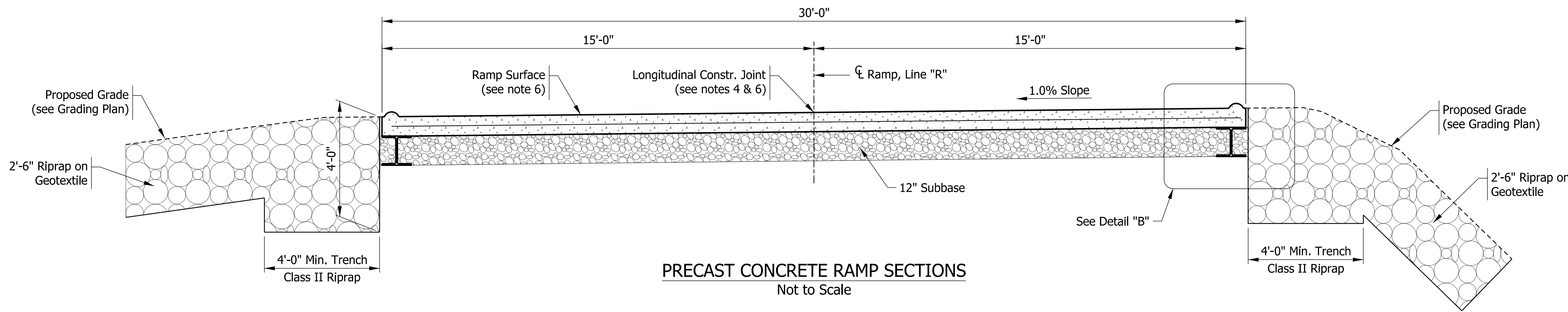
DETAIL "A"
Not to Scale



CONCRETE CAST-IN-PLACE RAMP SECTIONS
Not to Scale



DETAIL "B"
Not to Scale

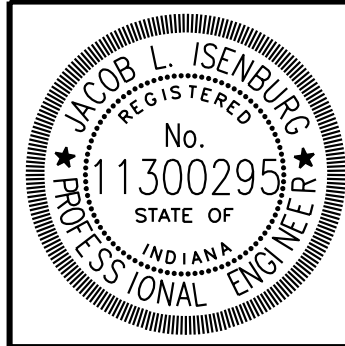


PRECAST CONCRETE RAMP SECTIONS
Not to Scale

NOTES

- Contractor may decrease the length of precast concrete section and increase length of cast-in-place concrete if river elevation allows.
- Reinforcement in precast section to be designed by the Contractor and submitted for approval. Minimum reinforcement shall be #5 bars spaced at 12".
- For underwater placement, place B-borrow to bottom of Subgrade.
- Skid and skid connection designs and details shall be submitted by Contractor for approval.
- As an alternative to a precast push slab, the Contractor may elect to install a cofferdam, dewater the area, and install the lower portion with cast-in-place methods. Both methods are acceptable.
- For Additional Details, see sheet 4.

W:\DNR\2018-042 IDNR- Brooksburg Boat Ramp\Design\CAD\Boat Ramp.dgn
 2/24/2020 REVISION 3.0
 4:51:17 PM PDP:ahlg
 030283333

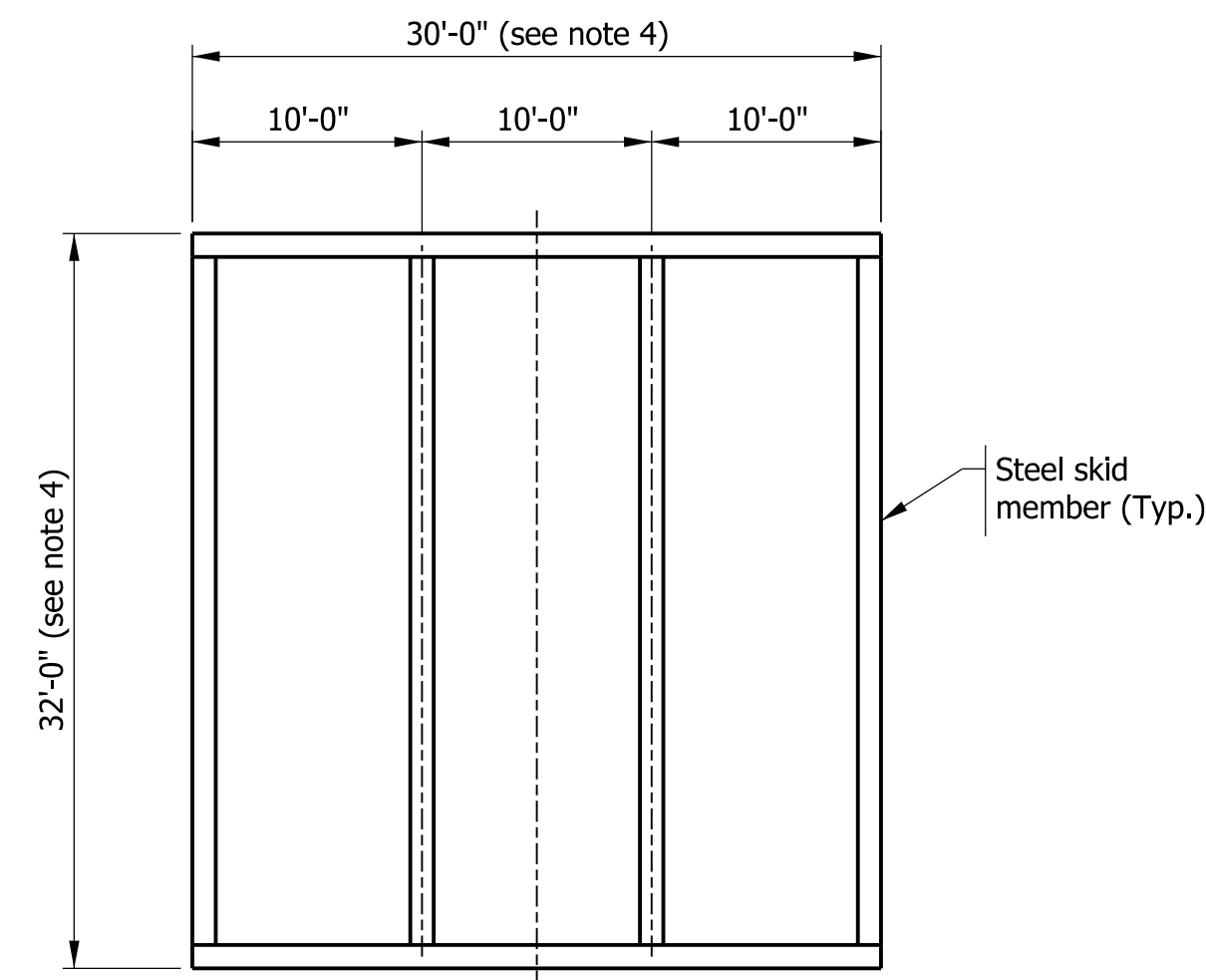


RECOMMENDED FOR APPROVAL	<i>[Signature]</i>	DESIGN ENGINEER	2-24-20
DESIGNED:	DW	DRAWN:	KM
CHECKED:	PL	CHECKED:	DW

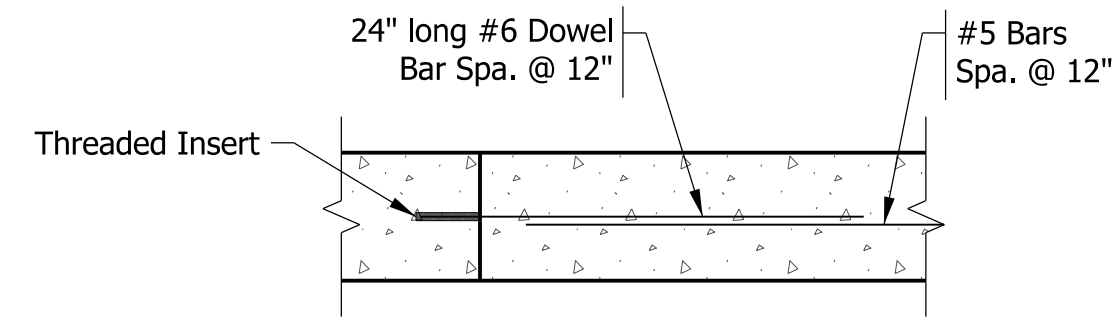
INDIANA DEPARTMENT OF NATURAL RESOURCES

BOAT RAMP DETAILS

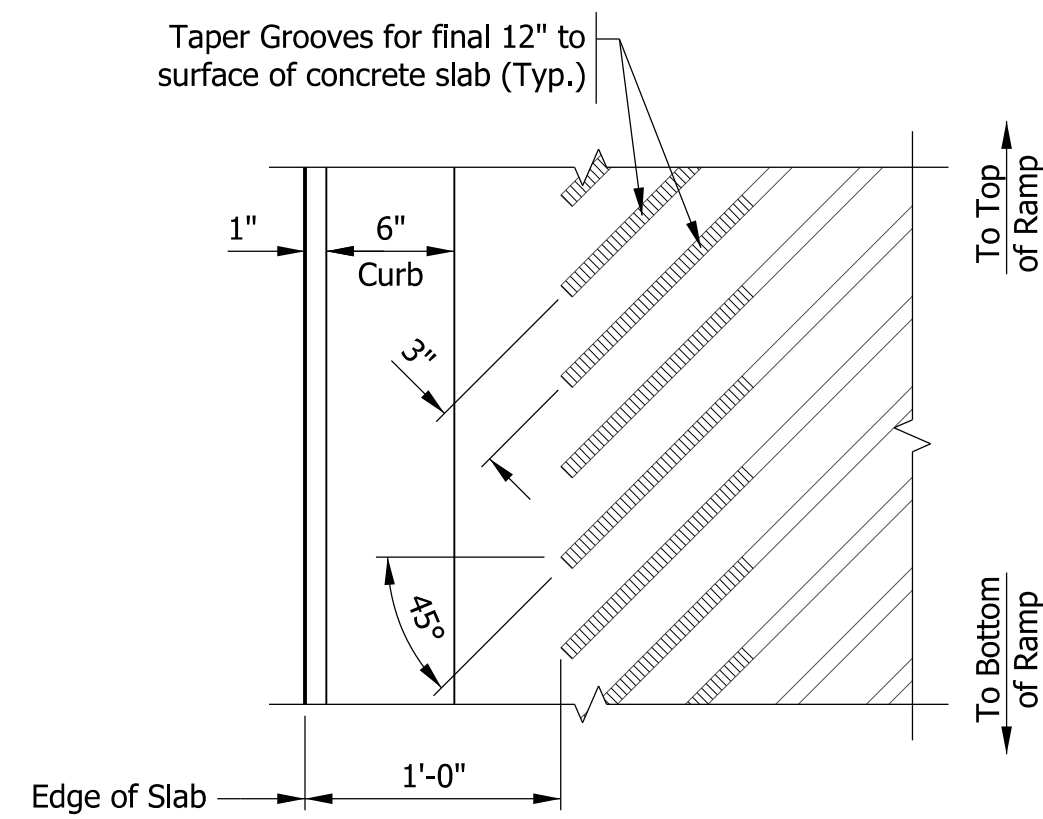
HORIZONTAL SCALE	BRIDGE FILE
AS NOTED	
VERTICAL SCALE	DESIGNATION
N/A	?
SURVEY BOOK	SHEETS
N/A	3 of 15
CONTRACT	PROJECT
	ENG2002871394



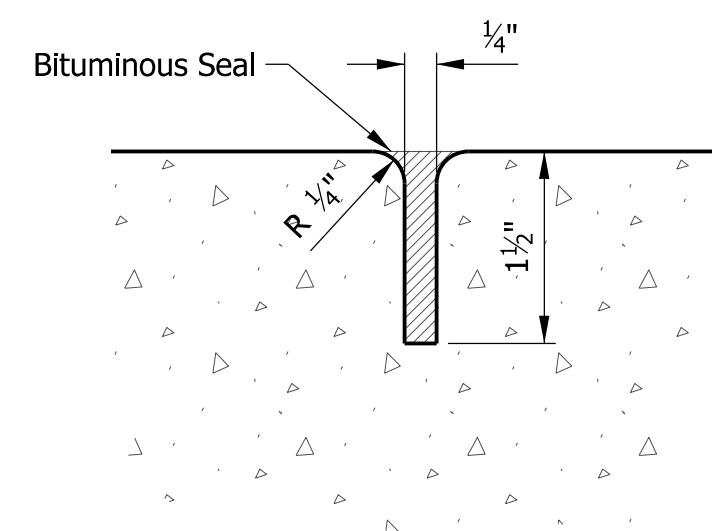
CONCRETE SKID RAMP PLAN
Not to Scale



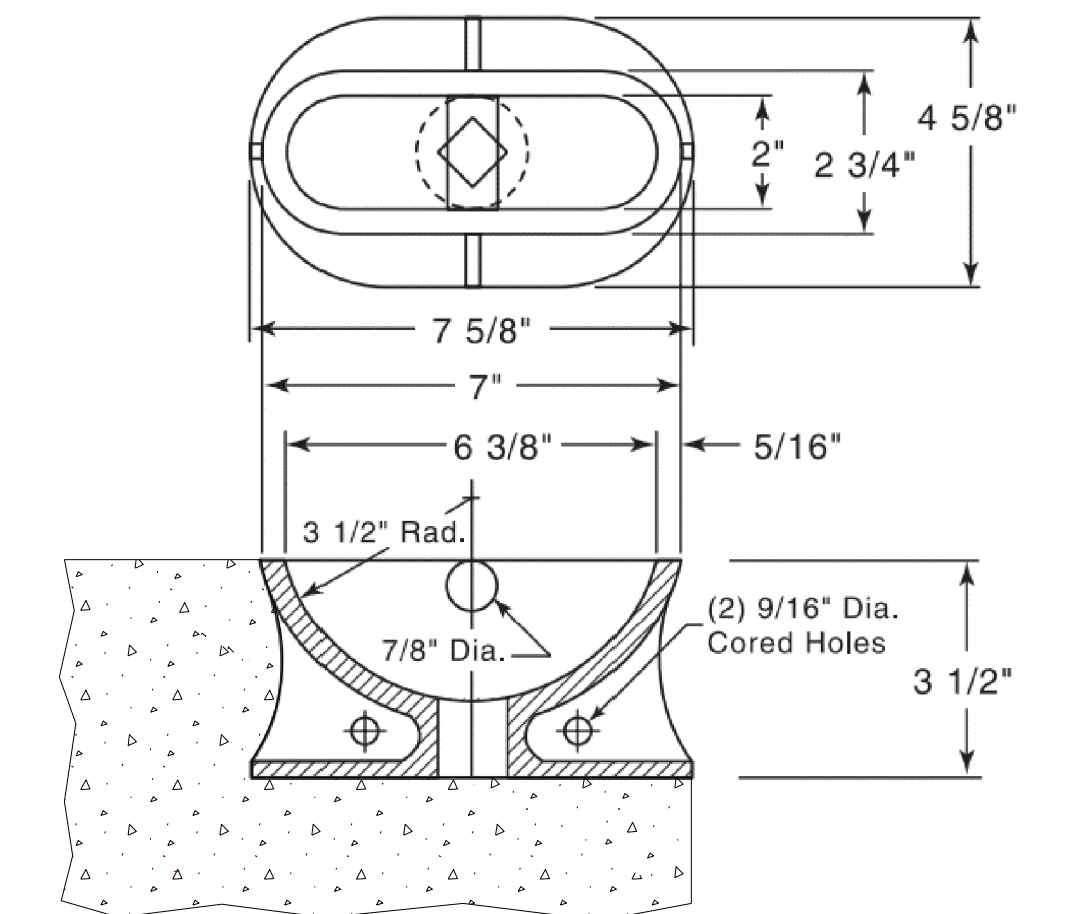
DOWEL BAR TRANSITION
Not to Scale



PLAN OF RAMP GROOVES
Not to Scale

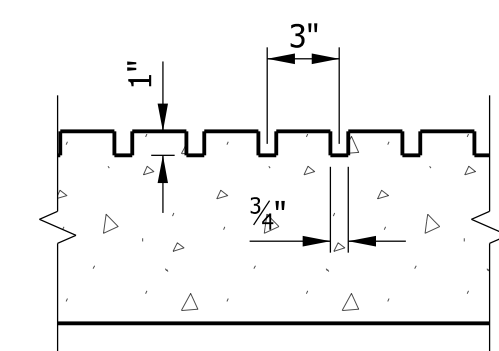


BITUMINOUS SEAL CONTRACTION JOINT
Not to Scale

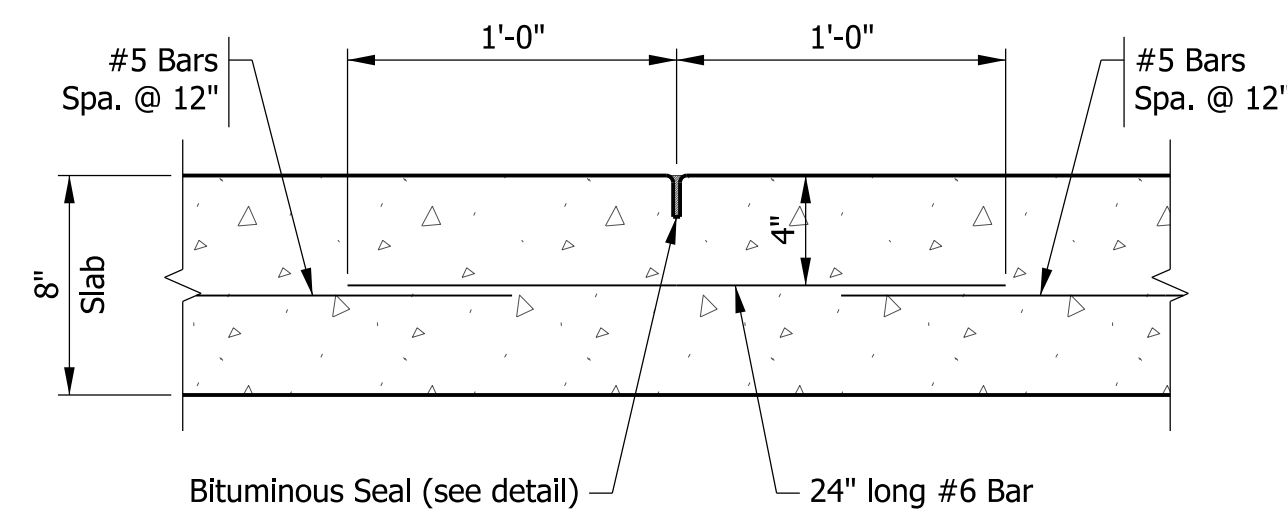


MOORING EYE

Neenah R-3490 3 1/2" mooring eye or equivalent. Mooring eye is placed on subgrade and filled with sand to exclude concrete during the pouring and finishing operation. Opening at bottom of eye is socket for wood or metal stake to bring eye to grade. Sand is washed out of eye when paving is complete. Alternative method is to push the eye in position in the wet concrete. Both methods are acceptable.



RAMP GROOVE DETAILS
Not to Scale

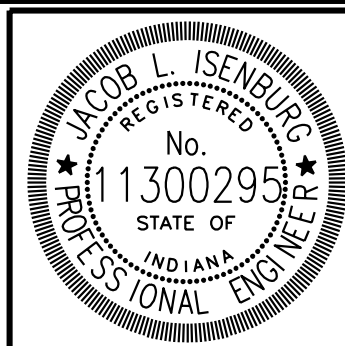


LONGITUDINAL CONSTRUCTION JOINT
Not to Scale

NOTES

- Contractor may decrease the length of precast concrete section and increase length of cast-in-place concrete if river elevation allows.
- Reinforcement in precast section to be designed by the Contractor and submitted for approval. Minimum reinforcement shall be #5 bars spaced at 12".
- For underwater placement, place B-borrow to bottom of Subgrade.
- Skid and skid connection designs and details shall be submitted by Contractor for approval.
- As an alternative to a precast push slab, the Contractor may elect to install a cofferdam, dewater the area, and install the lower portion with cast-in-place methods. Both methods are acceptable.

W:\DNR\2018-042 IDNR- Brooksburg Boat Ramp\Design\CAD\Boat Ramp.dgn
 2/24/2020 REVISION 3.0
 4:51:19 PM PDP:ahlg
 03283333

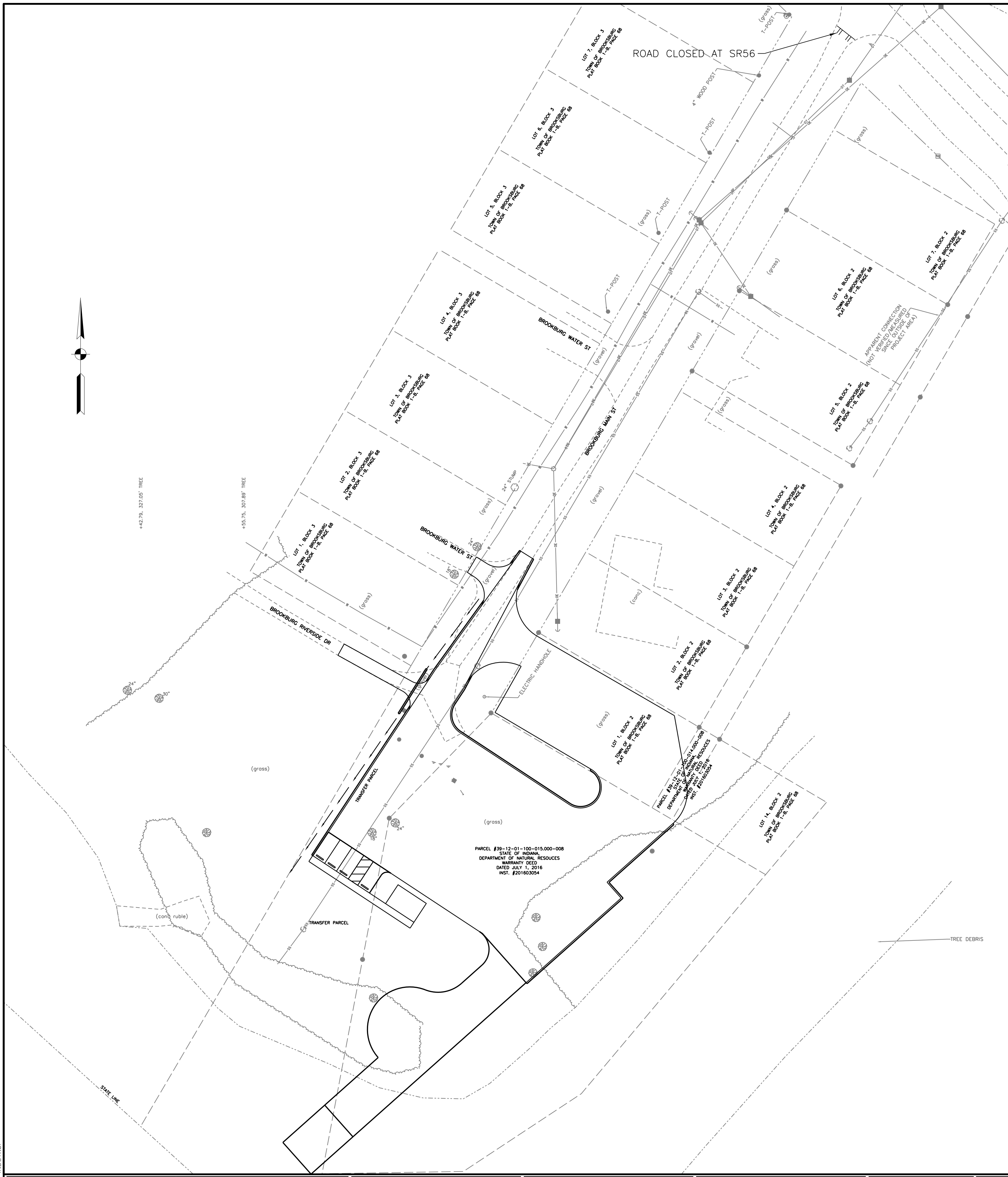


RECOMMENDED FOR APPROVAL	<i>J. Isenburg</i>	DESIGN ENGINEER	2-24-20	DATE
DESIGNED:	DW	DRAWN:	KM	
CHECKED:	PL	CHECKED:	DW	

INDIANA DEPARTMENT
OF NATURAL RESOURCES

BOAT RAMP DETAILS

HORIZONTAL SCALE	BRIDGE FILE
AS NOTED	
VERTICAL SCALE	DESIGNATION
N/A	?
SURVEY BOOK	SHEETS
N/A	4 of 15
CONTRACT	PROJECT
	ENG2002871394



GENERAL NOTES:

CONTRACTOR SHALL COORDINATE MAINTENANCE OF TRAFFIC WITH ENGINEER.

THE CONTRACTOR WILL PLACE ADEQUATE WARNING SIGNS AND DRUMS IN ACCORDANCE WITH THE MUTCD AND INDOT STANDARD SPECIFICATIONS.

THE CONTRACTOR IS RESPONSIBLE FOR RESETTling AND MAINTAINING TRAFFIC CONTROL DEVICES FOR THE DURATION OF THE PROJECT.

THE CONTRACTOR SHALL NOTIFY LOCAL AUTHORITIES/ RESIDENTS/ BUSINESSES/ SCHOOLS/FIRE DEPARTMENT/ POLICE DEPARTMENT/ POST OFFICE/ SANITATION DEPARTMENT OF 2 WEEKS PRIOR TO ANY WORK ACTIVITY.

THE CONTRACTOR IS TO BE AWARE OF THE AERIAL CROSSINGS OR UNDERGROUND UTILITIES IN THE VICINITY THAT MAY INTERFERE WITH THE CONSTRUCTION PHASING AND MODIFY ACCORDINGLY TO NOT DISRUPT THE UTILITY SERVICE.

THE CONTRACTOR SHALL COVER OR FILL ALL OPEN EXCAVATION AREAS WHEN SITE IS LEFT UNATTENDED.

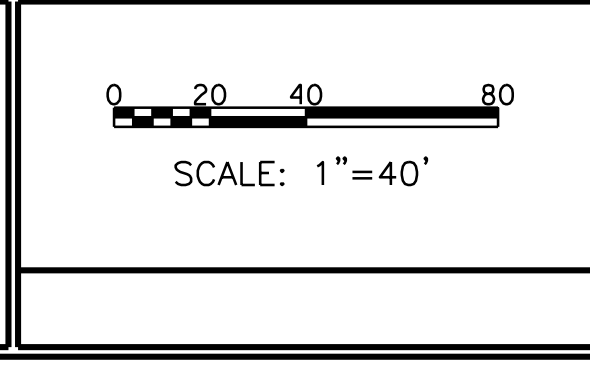
PHASING NOTES:

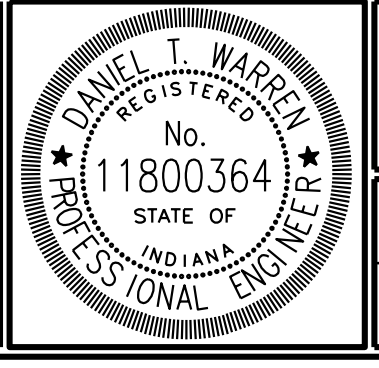
THROUGH THE ENTIRE DURATION OF THIS PROJECT, THE ROAD SHALL BE CLOSED TO THRU TRAFFIC. DURING THE ROAD CLOSURE, THE CONTRACTOR WILL PROVIDE LOCAL ACCESS TO ANY RESIDENTS OR BUSINESSES ALONG THE ROUTE.

ROAD CLOSURE SIGN ASSEMBLY - 1 REQUIRED
 TYPE III-B BARRICADES - 16 LF REQUIRED

W:\INDR\2018-042 IDNR- Brooksburg Boat Ramp\Design\CAD\Maintenance of Traffic.dgn
 2/24/2020
 4:51:25 PM
 PDP:ahdg
 NGD:LEB

Ⓒ	PCCP 4"	Ⓐ	6" AGGREGATE SHOULDER
Ⓒ	PCCP 8"	Ⓑ	CURB RAMP, CONCRETE
Ⓕ	SIDEWALK, CONCRETE, 4 IN.		
Ⓐ	AGGREGATE 6"		
Ⓒ	SEEDING		





RECOMMENDED FOR APPROVAL	<i>D. T. Warren</i>	2-24-20	DATE
DESIGNED:	DW	DRAWN:	KM
CHECKED:	PL	CHECKED:	DW

INDIANA DEPARTMENT
 OF NATURAL RESOURCES

MAINTENANCE OF TRAFFIC

HORIZONTAL SCALE	BRIDGE FILE
1" = 40'	
VERTICAL SCALE	DESIGNATION
N/A	?
SURVEY BOOK	SHEETS
	5 of 15
CONTRACT	PROJECT
	ENG2002871394

100+00

105+00

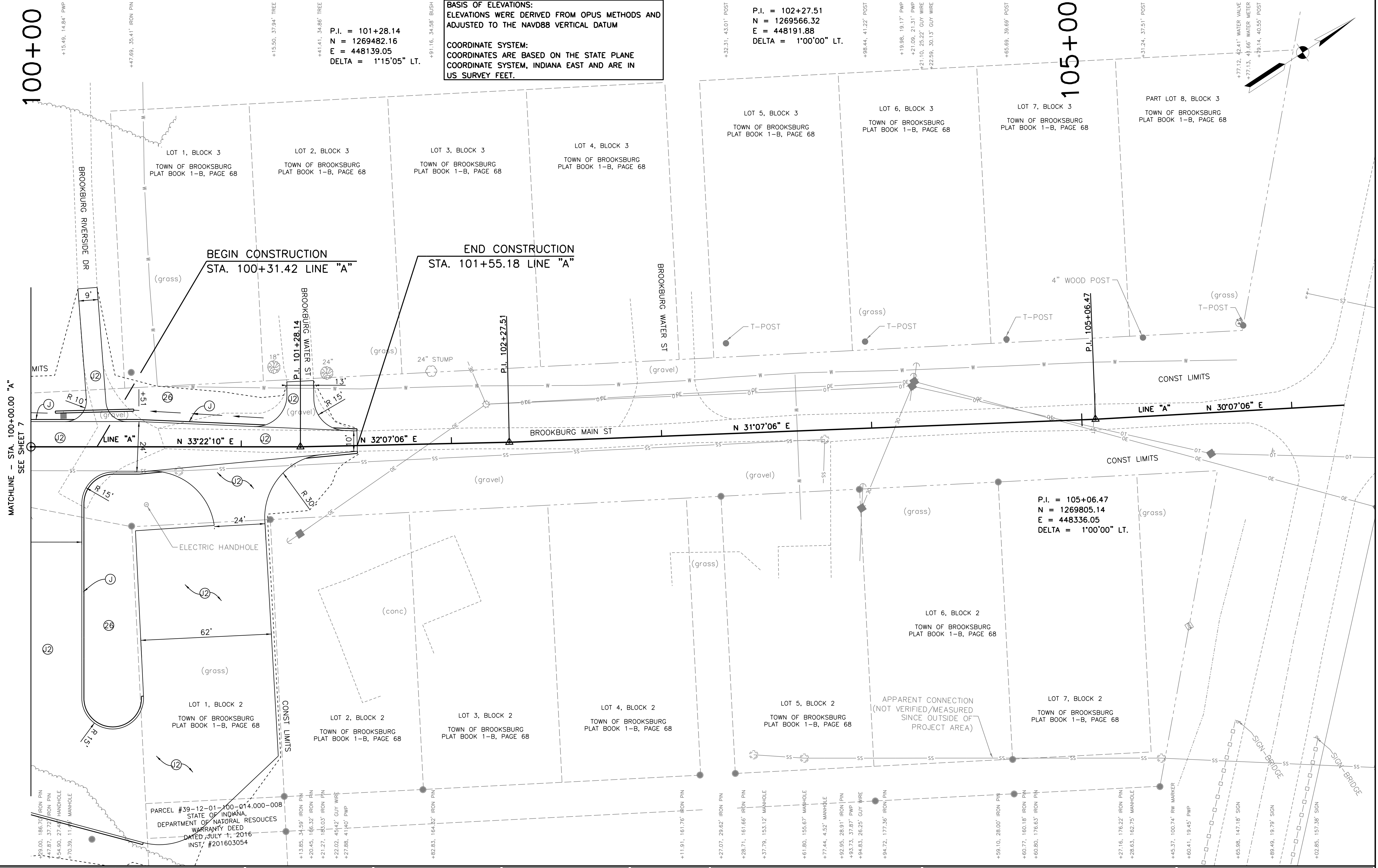
BASIS OF ELEVATIONS:
 ELEVATIONS WERE DERIVED FROM OPUS METHODS AND ADJUSTED TO THE NAVD88 VERTICAL DATUM

COORDINATE SYSTEM:
 COORDINATES ARE BASED ON THE STATE PLANE COORDINATE SYSTEM, INDIANA EAST AND ARE IN US SURVEY FEET.

P.I. = 102+27.51
 N = 1269566.32
 E = 448191.88
 DELTA = 1'00'00" LT.

P.I. = 101+28.14
 N = 1269482.16
 E = 448139.05
 DELTA = 1'15'05" LT.

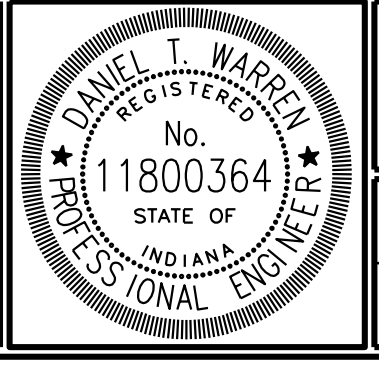
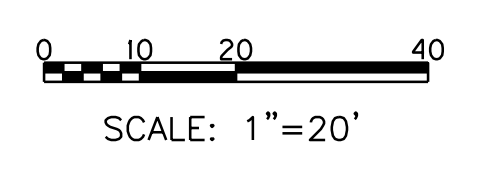
P.I. = 105+06.47
 N = 1269805.14
 E = 448336.05
 DELTA = 1'00'00" LT.



MATCHLINE - STA. 100+00.00 "A"
 SEE SHEET 7

PARCEL #39-12-01-100-014.000-008
 STATE OF INDIANA
 DEPARTMENT OF NATURAL RESOURCES
 WARRANTY DEED
 DATED JULY 1, 2016
 INST. #201603054

- (C) PCCP 4"
- (C) PCCP 8"
- (F) SIDEWALK, CONCRETE, 4 IN.
- (12) AGGREGATE 6"
- (26) SEEDING
- (J) 6" AGGREGATE SHOULDER
- (R) CURB RAMP, CONCRETE



RECOMMENDED FOR APPROVAL _____
 DESIGN ENGINEER 2-24-20 DATE

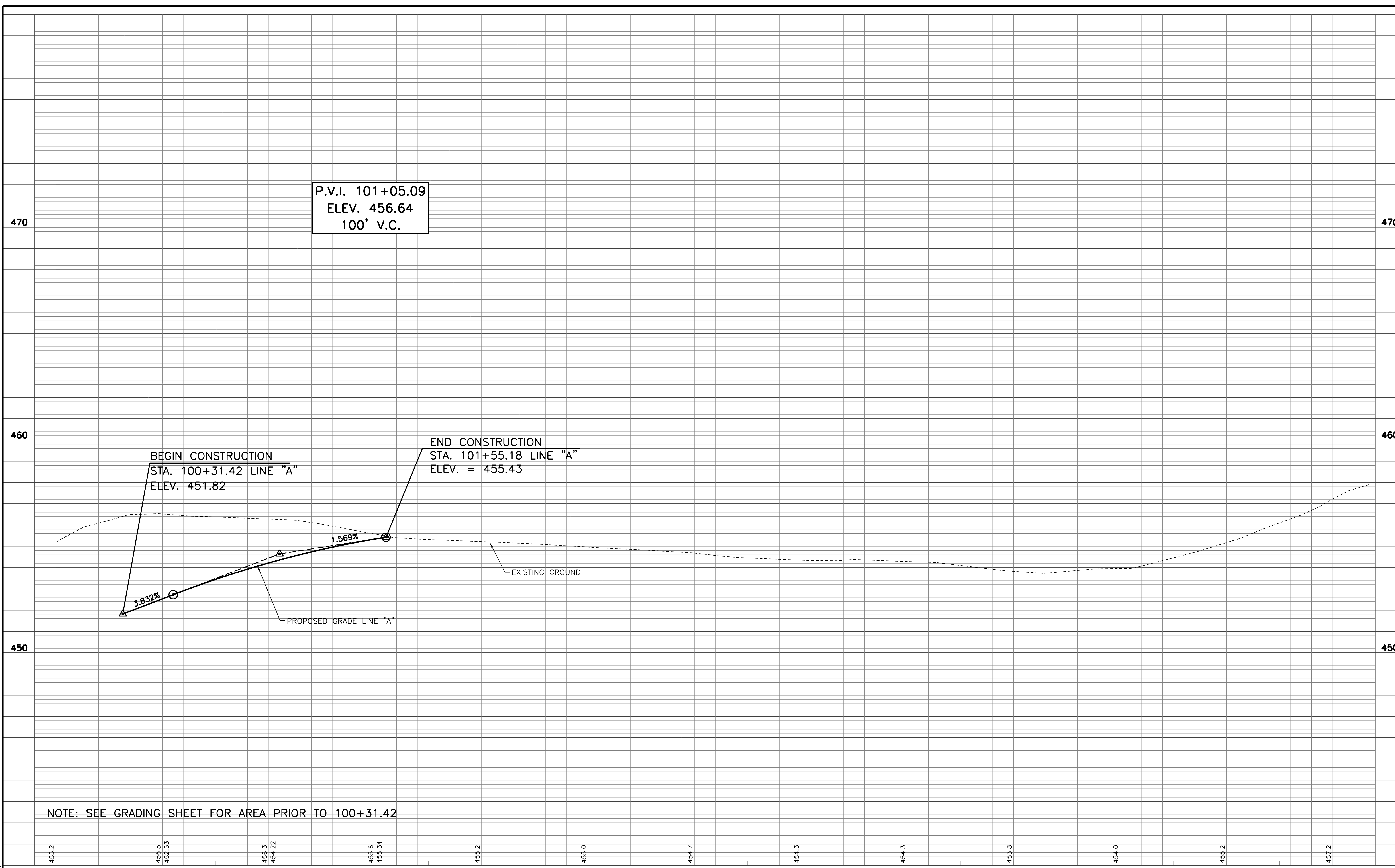
DESIGNED: DW DRAWN: KM
 CHECKED: PL CHECKED: DW

INDIANA DEPARTMENT OF NATURAL RESOURCES

PLAN SHEET
 STA. 100+00.00 TO STA. 106+25.00 "A"

HORIZONTAL SCALE	BRIDGE FILE
1" = 20'	
VERTICAL SCALE	DESIGNATION
N/A	?
SURVEY BOOK	SHEETS
	6 of 15
CONTRACT	PROJECT
	ENG2002871394

W:\DNR\2018-042 IDNR - Brooksbu...
 2/24/2020
 REVISION 3.0
 PDP:ahg
 4:51:28 PM
 NGD:tbl



NOTE: SEE GRADING SHEET FOR AREA PRIOR TO 100+31.42

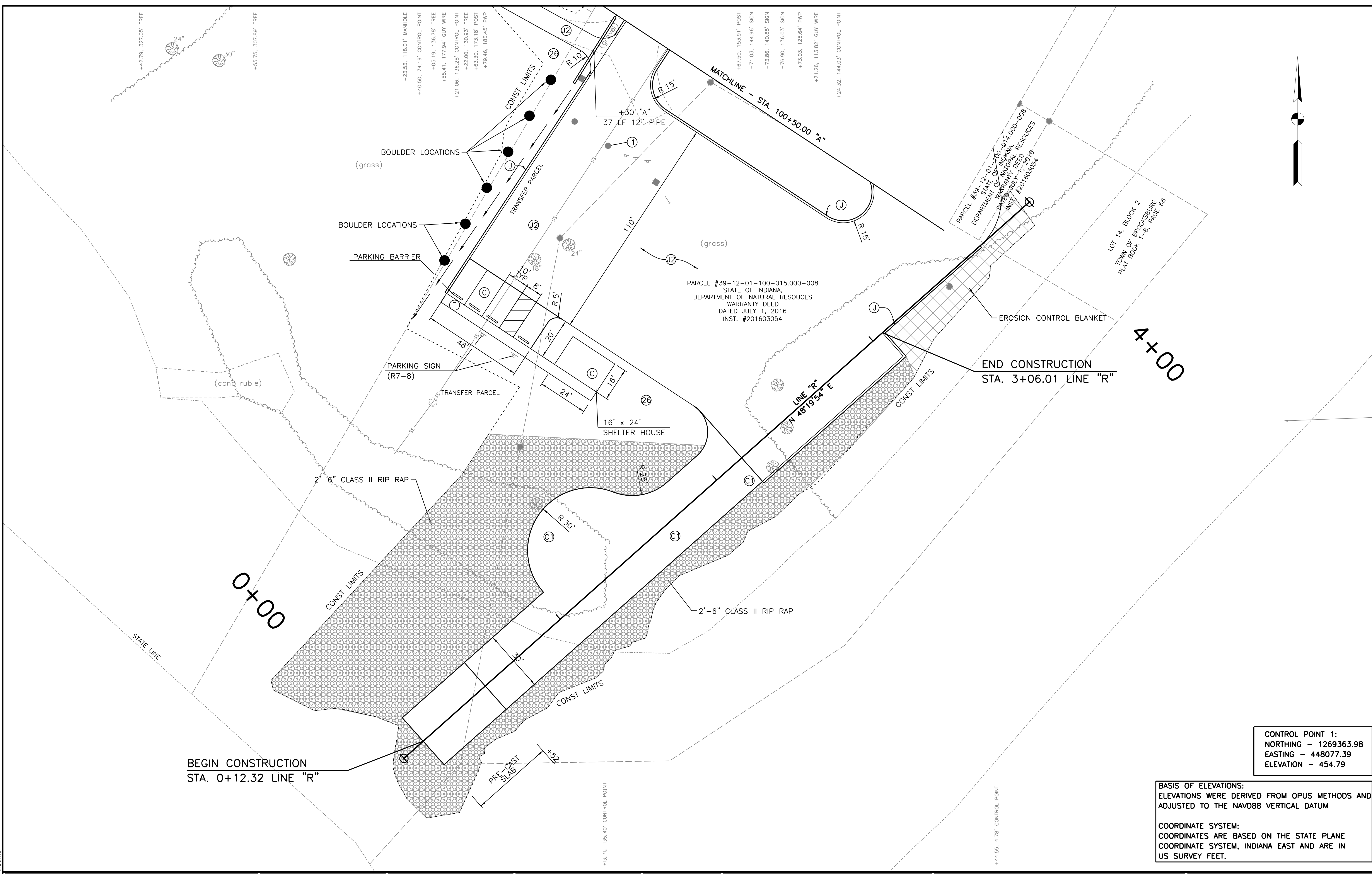
455.2 456.5
452.53 456.3
454.22 455.6
455.34 455.2 455.0 454.7 454.3 454.3 453.8 454.0 455.2 457.2

100+00 101+00 102+00 103+00 104+00 105+00 106+00

W:\DNR\2018-042 IDNR- Brooksbury Boat Ramp\Design\CAD\Proj\0000-10025.dgn
 REVISION 3.0
 2/24/2020
 4:51:30 PM
 PJP:ahlg
 NGD:ldh

					RECOMMENDED FOR APPROVAL <i>D.T.W.</i> <small>DESIGN ENGINEER 2-24-20 DATE</small>	INDIANA DEPARTMENT OF NATURAL RESOURCES	<small>HORIZONTAL SCALE 1" = 20'</small>	<small>BRIDGE FILE</small>
					<small>DESIGNED: DW DRAWN: KM</small>	PROFILE SHEET	<small>VERTICAL SCALE 1" = 2'</small>	<small>DESIGNATION ?</small>
					<small>CHECKED: PL CHECKED: DW</small>	STA. 100+00.00 TO STA. 106+25.00 LINE "A"	<small>SURVEY BOOK</small>	<small>SHEETS 7 of 15</small>
							<small>CONTRACT</small>	<small>PROJECT ENG2002871394</small>

W:\DNR\2018-042 IDNR- Brooksbury Boat Ramp\Design\CAD\Plan\00-400.dgn
 2/24/2020
 4:51:34 PM
 PDP:ahdg
 NGD:TLB

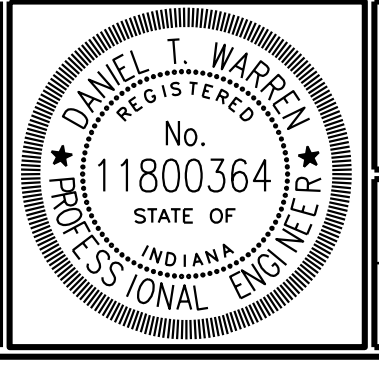
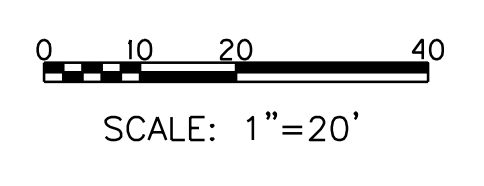


CONTROL POINT 1:
 NORTHING - 1269363.98
 EASTING - 448077.39
 ELEVATION - 454.79

BASIS OF ELEVATIONS:
 ELEVATIONS WERE DERIVED FROM OPUS METHODS AND ADJUSTED TO THE NAVD88 VERTICAL DATUM

COORDINATE SYSTEM:
 COORDINATES ARE BASED ON THE STATE PLANE COORDINATE SYSTEM, INDIANA EAST AND ARE IN US SURVEY FEET.

(C)	PCCP 4"	(J)	6" AGGREGATE SHOULDER
(C1)	PCCP 8"	(R)	CURB RAMP, CONCRETE
(F)	SIDEWALK, CONCRETE, 4 IN.		
(J2)	AGGREGATE 6"		
(26)	SEEDING		

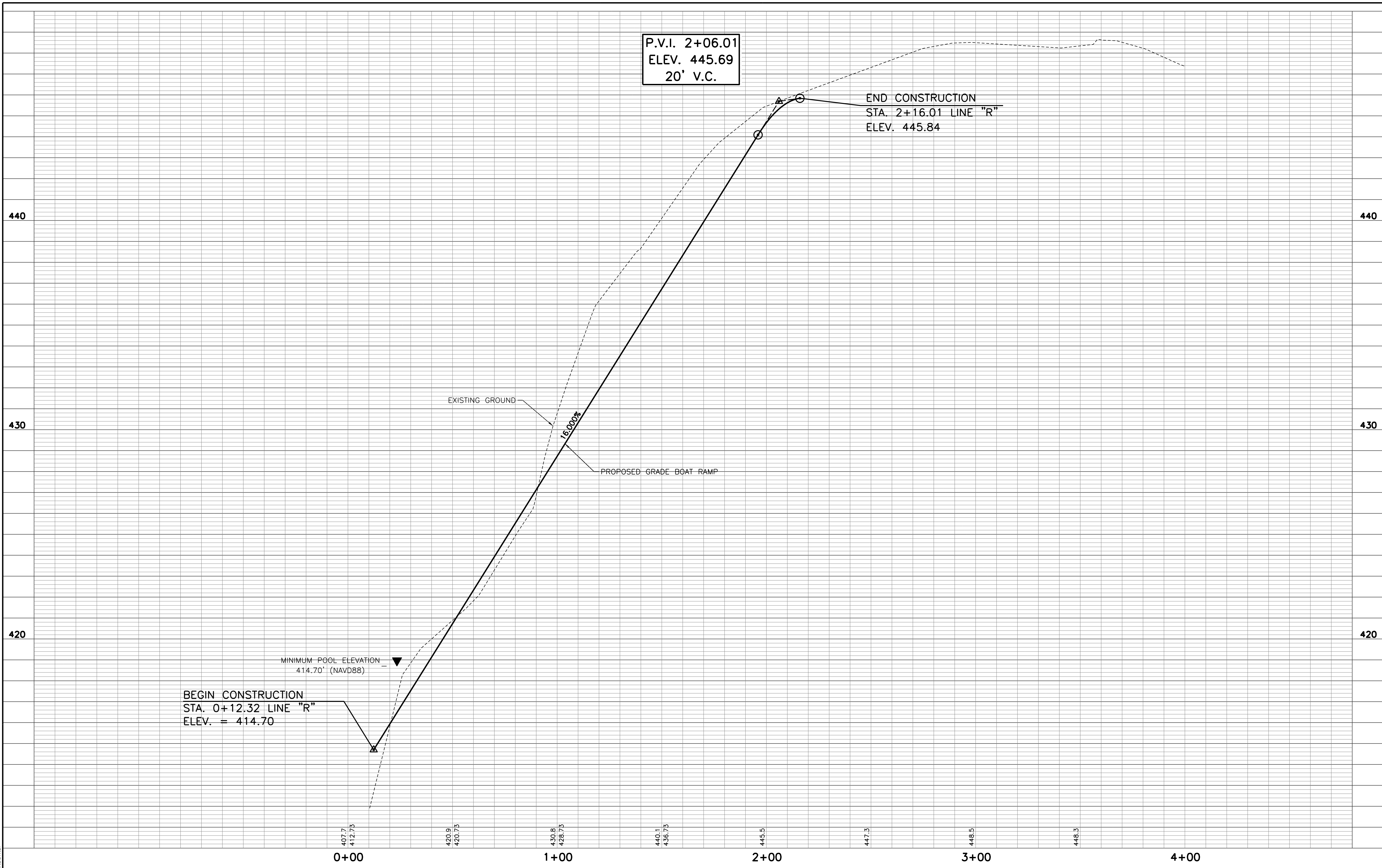


RECOMMENDED FOR APPROVAL	<i>D.T.W.</i>	DESIGN ENGINEER	2-24-20	DATE
DESIGNED:	DW	DRAWN:	KM	
CHECKED:	PL	CHECKED:	DW	

INDIANA DEPARTMENT
 OF NATURAL RESOURCES

PLAN SHEET
 STA. 0+00.00 TO STA. 4+00.00 "R"

HORIZONTAL SCALE	BRIDGE FILE
1" = 20'	
VERTICAL SCALE	DESIGNATION
N/A	?
SURVEY BOOK	SHEETS
	8 of 15
CONTRACT	PROJECT
	ENG2002871394



P.V.I. 2+06.01
ELEV. 445.69
20' V.C.

END CONSTRUCTION
STA. 2+16.01 LINE "R"
ELEV. 445.84

EXISTING GROUND

PROPOSED GRADE BOAT RAMP

16.000%

MINIMUM POOL ELEVATION
414.70' (NAVD88)

BEGIN CONSTRUCTION
STA. 0+12.32 LINE "R"
ELEV. = 414.70

0+00

1+00

2+00

3+00

4+00

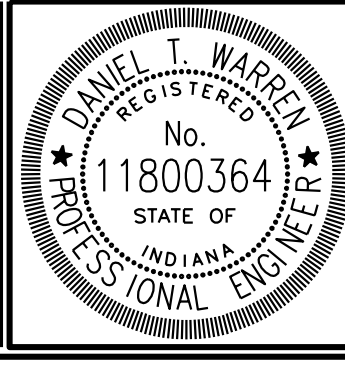
W:\DNR\2018-042 IDNR- Brooksburg Boat Ramp\Design\CAD\Pre000-400.dgn
 2/24/2020 REVISION 3.0
 4:51:37 PM PJP:ahlg
 NGD:LEI

--	--	--	--

--	--

--	--

--	--

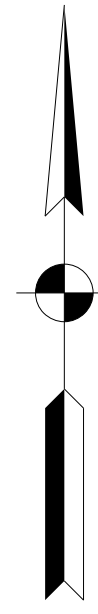


RECOMMENDED FOR APPROVAL	<i>D.T.W.</i>	DESIGN ENGINEER	2-24-20	DATE
DESIGNED:	DW	DRAWN:	KM	
CHECKED:	PL	CHECKED:	DW	

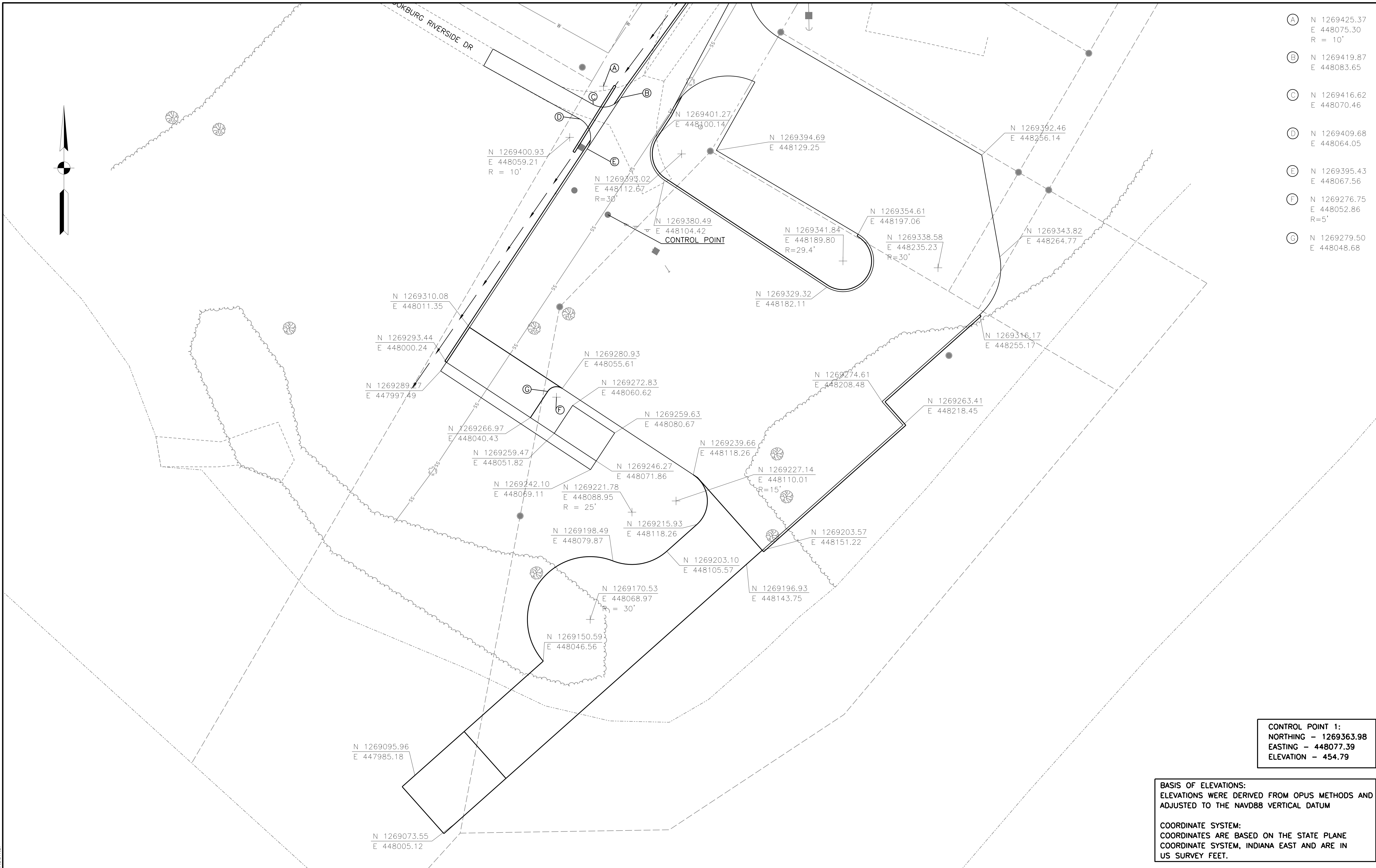
INDIANA DEPARTMENT
OF NATURAL RESOURCES

PROFILE SHEET
STA. 0+00.00 TO STA. 4+00.00 "R"

HORIZONTAL SCALE 1" = 20'	BRIDGE FILE
VERTICAL SCALE 1" = 2'	DESIGNATION ?
SURVEY BOOK	SHEETS 9 of 15
CONTRACT	PROJECT ENG2002871394



- (A) N 1269425.37
E 448075.30
R = 10'
- (B) N 1269419.87
E 448083.65
- (C) N 1269416.62
E 448070.46
- (D) N 1269409.68
E 448064.05
- (E) N 1269395.43
E 448067.56
- (F) N 1269276.75
E 448052.86
R=5'
- (G) N 1269279.50
E 448048.68



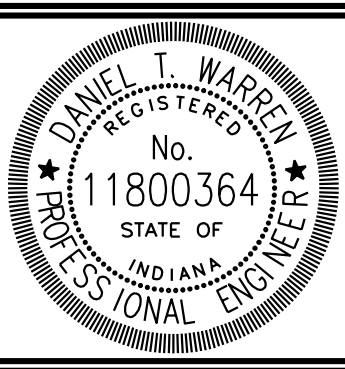
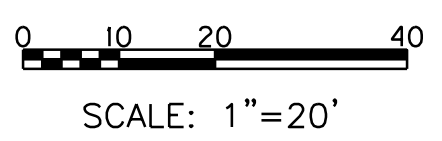
CONTROL POINT 1:
 NORTHING - 1269363.98
 EASTING - 448077.39
 ELEVATION - 454.79

BASIS OF ELEVATIONS:
 ELEVATIONS WERE DERIVED FROM OPUS METHODS AND
 ADJUSTED TO THE NAVD88 VERTICAL DATUM

COORDINATE SYSTEM:
 COORDINATES ARE BASED ON THE STATE PLANE
 COORDINATE SYSTEM, INDIANA EAST AND ARE IN
 US SURVEY FEET.

W:\DNR\2018-042 IDNR - Brooksburg Boat Ramp\Design\CAD\ConstDetail\000-400.dgn
 2/24/2020 REVISION 3.0
 4:51:39 PM PDP:ahlg
 NGD:tbl

- (C) PCCP 4"
- (C1) PCCP 8"
- (F) SIDEWALK, CONCRETE, 4 IN.
- (V2) AGGREGATE 6"
- (26) SEEDING
- (J) 6" AGGREGATE SHOULDER
- (R) CURB RAMP, CONCRETE



RECOMMENDED FOR APPROVAL *D.T.W.* 2-24-20 DATE
 DESIGN ENGINEER
 DESIGNED: DW DRAWN: KM
 CHECKED: PL CHECKED: DW

INDIANA DEPARTMENT
 OF NATURAL RESOURCES
LAYOUT PLAN
BOAT RAMP & PARKING LOT

HORIZONTAL SCALE	BRIDGE FILE
1" = 20'	
VERTICAL SCALE	DESIGNATION
N/A	?
SURVEY BOOK	SHEETS
	10 of 15
CONTRACT	PROJECT
	ENG2002871394



APPROXIMATE EARTHWORK:
6,842 CUYDS

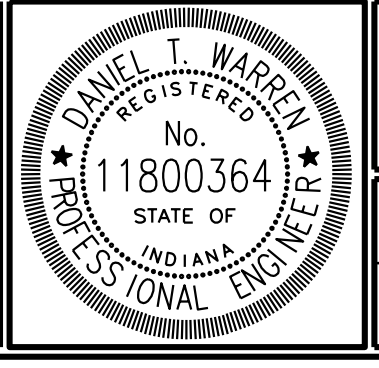
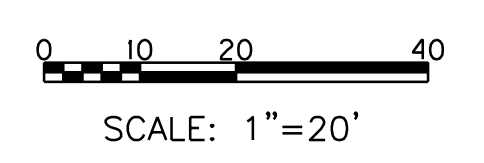
ESTIMATED QUANTITY IS FOR INFORMATION ONLY. THE CONTRACTOR SHALL VISIT THE SITE TO DETERMINE THE QUANTITIES REQUIRED TO COMPLETE THE JOB. THE CONTRACT SHALL BE BID AS LUMP SUM.

BASIS OF ELEVATIONS:
ELEVATIONS WERE DERIVED FROM OPUS METHODS AND ADJUSTED TO THE NAVD88 VERTICAL DATUM

COORDINATE SYSTEM:
COORDINATES ARE BASED ON THE STATE PLANE COORDINATE SYSTEM, INDIANA EAST AND ARE IN US SURVEY FEET.

W:\DNR\2018-042 IDNR- Brookburg Boat Ramp\Design\CAD\PropContours000-400.dgn
 2/24/2020 REVISION 3.0
 4:51:44 PM PJP:ahg
 220

Ⓒ	PCCP 4"	Ⓐ	6" AGGREGATE SHOULDER
Ⓒ	PCCP 8"	Ⓑ	CURB RAMP, CONCRETE
Ⓕ	SIDEWALK, CONCRETE, 4 IN.		
Ⓐ	AGGREGATE 6"		
Ⓒ	SEEDING		

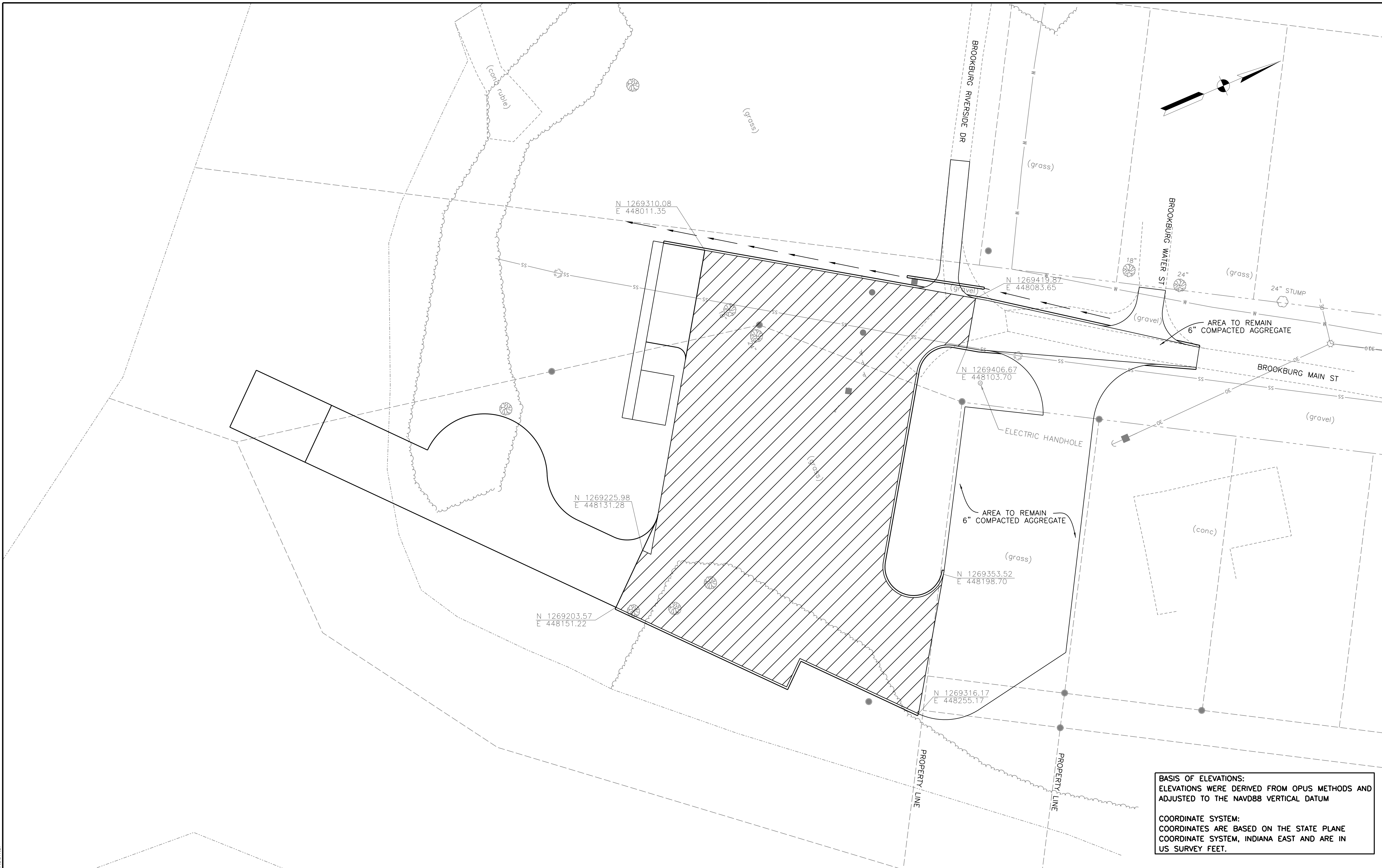


RECOMMENDED FOR APPROVAL		 DESIGN ENGINEER		2-24-20	DATE
DESIGNED:	DW	DRAWN:	KM		
CHECKED:	PL	CHECKED:	DW		

**INDIANA DEPARTMENT
OF NATURAL RESOURCES**

**GRADING PLAN
BOAT RAMP & PARKING LOT**

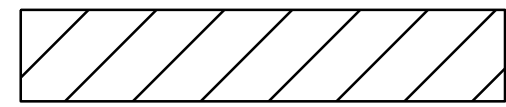
HORIZONTAL SCALE	BRIDGE FILE
1" = 20'	
VERTICAL SCALE	DESIGNATION
N/A	?
SURVEY BOOK	SHEETS
	11 of 15
CONTRACT	PROJECT
	ENG2002871394

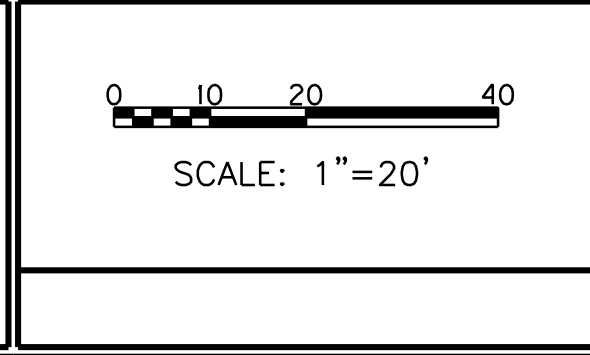


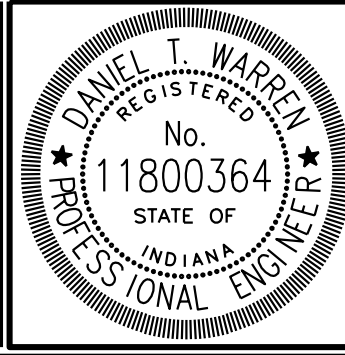
BASIS OF ELEVATIONS:
 ELEVATIONS WERE DERIVED FROM OPUS METHODS AND ADJUSTED TO THE NAVD88 VERTICAL DATUM


COORDINATE SYSTEM:
 COORDINATES ARE BASED ON THE STATE PLANE COORDINATE SYSTEM, INDIANA EAST AND ARE IN US SURVEY FEET.

W:\DNR\2018-042 IDNR- Brookburg Boat Ramp\Design\CAD\Alternate Bid Limits.dgn
 2/24/2020 REVISION 3.0
 4:51:47 PM PDP:ahdg
 NGD:1B1

ALTERNATE BID LIMITS FOR ASPHALT PARKING	
ASPHALT SECTION	
165#/SY HMA SURFACE TYPE 'B', ON	
275#/SY HMA INTERMEDIATE TYPE 'B', ON	
10" COMPACTED AGGREGATE NO. 53, ON	
SUBGRADE TREATMENT TYP 1B	

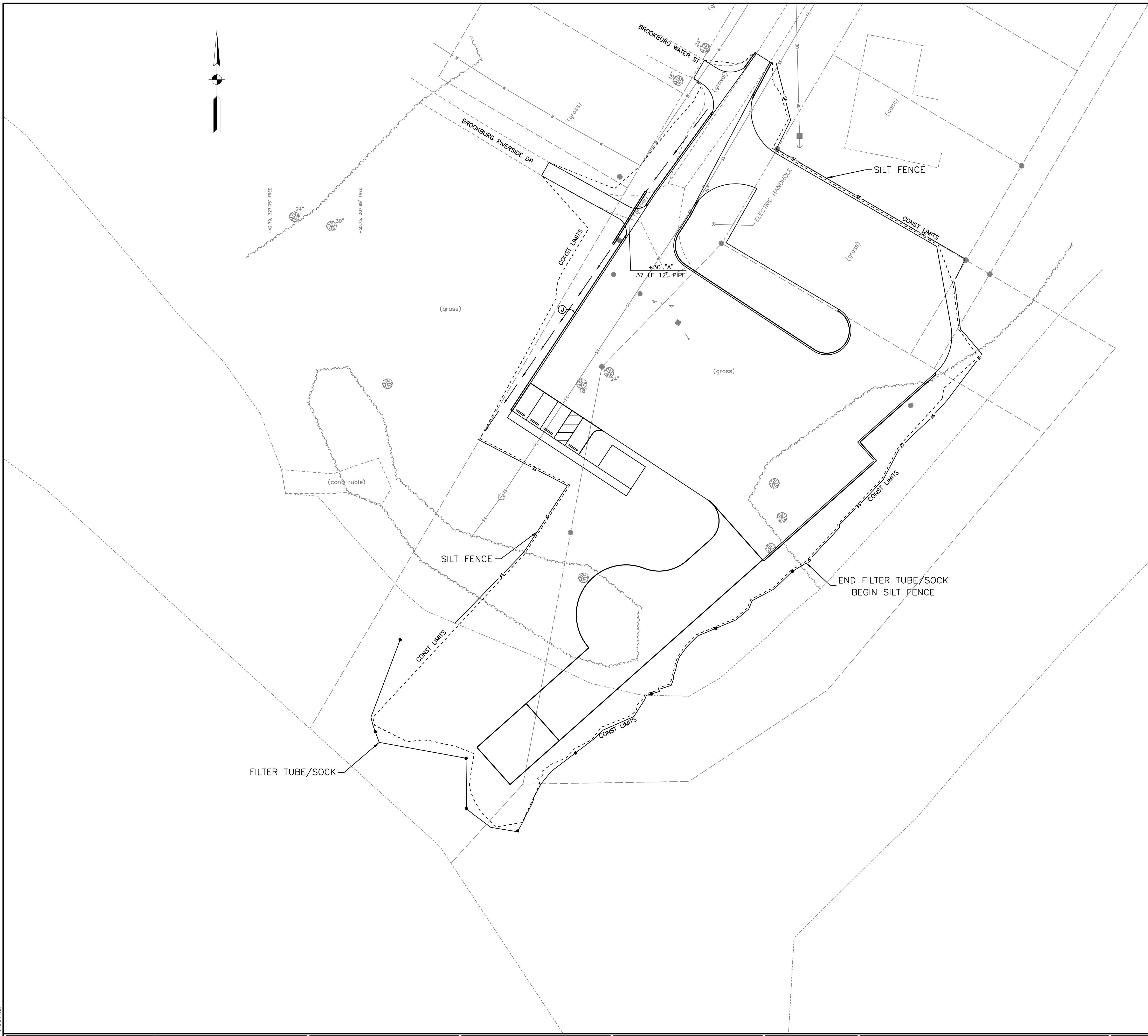




RECOMMENDED FOR APPROVAL		2-24-20	DATE
DESIGNED:	DW	DRAWN:	KM
CHECKED:	PL	CHECKED:	DW

INDIANA DEPARTMENT OF NATURAL RESOURCES
ALTERNATE BID LIMITS

HORIZONTAL SCALE	BRIDGE FILE
1" = 20'	
VERTICAL SCALE	DESIGNATION
N/A	?
SURVEY BOOK	SHEETS
	12 of 15
CONTRACT	PROJECT
	ENG2002871394



EROSION CONTROL NOTES:

THIS PLAN HAS BEEN CREATED IN AN EFFORT TO ELIMINATE SEDIMENT FROM LEAVING THE PROJECT WORK AREAS DURING CONSTRUCTION PROTECTING THE ADJOINING PROPERTIES.

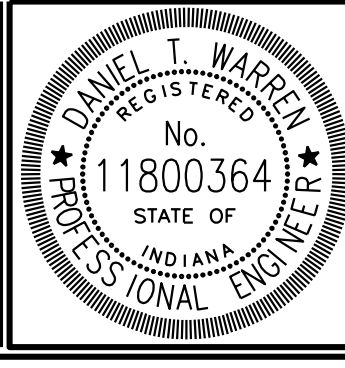
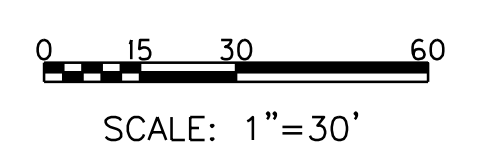
CONTRACTOR SHALL REFER TO THE INDIANA STORM WATER QUALITY MANUAL AND THE INDOT STANDARDS WHEN PERFORMING EROSION CONTROL. IN CASE OF CONFLICT, THE MORE STRINGENT SHALL APPLY.

CONSTRUCTION ACTIVITIES:

1. CALL THE INDIANA UNDERGROUND PLANT PROTECTION SYSTEMS, INC. ("HOLEY MOLEY") AT 1-800-382-5544 TO CHECK THE LOCATION OF ANY EXISTING UTILITIES. THEY SHOULD BE NOTIFIED TWO WORKING DAYS BEFORE CONSTRUCTION TAKES PLACE.
2. ESTABLISH ONSITE LOCATION FOR OWNER/OPERATOR/CONTRACTOR PLACEMENT OF APPROVED PLANS AND RULE 5 NOI AND RULE 5 INSPECTION DOCUMENTATION. IF NEEDED, A SPOILS AREA SHALL BE ESTABLISHED BY THE CONTRACTOR IN AN APPROPRIATE AREA. THE SPOILS AREA SHOULD BE SURROUNDED BY SILT FENCE AND NOT BE IN A CONCENTRATED FLOW PATH.
3. PRIOR TO THE START OF CONSTRUCTION OF THE PROPOSED IMPROVEMENTS, A CONSTRUCTION ENTRANCE/ACCESS SHALL BE CONSTRUCTED. THE FILTER TUBE/SOCK AND SILT FENCE PERIMETER PROTECTION SHALL BE ESTABLISHED. THE IMPROVEMENTS CAN BE CONSTRUCTED.
4. TEMPORARY SEEDING SHOULD TAKE PLACE AT THIS TIME ON DISTURBED AREAS THAT ARE EXPECTED TO BE INACTIVE FOR MORE THAN SEVEN DAYS AS DESCRIBED IN INDOT STANDARD SPECIFICATIONS SECTION 205. AFTER CONSTRUCTION PERMANENT SEEDING SHALL BE PLACED ON ALL DISTURBED AREAS. IF AN AREA TO BE SEEDING IS AT A SLOPE OF 3:1 OR STEEPER, SEEDING SHALL BE PLACED WITH EROSION CONTROL BLANKETS.
5. TEMPORARY SEDIMENT AND EROSION CONTROL MEASURES SHOULD BE REMOVED AFTER FINAL GRADING IS COMPLETED AND VEGETATION HAS BEEN ESTABLISHED UPSTREAM OF THE MEASURE.

W:\DNR\2018-042 IDNR- Brooksbury Boat Ramp\Design\CAD\Erosion Control Plan.dgn
 REVISION 3.0
 2/24/2020
 PJP:ahdg
 4:51:51 PM
 230

Ⓒ	PCCP 4"	Ⓐ	6" AGGREGATE SHOULDER
Ⓒ1	PCCP 8"	Ⓑ	CURB RAMP, CONCRETE
Ⓕ	SIDEWALK, CONCRETE, 4 IN.		
Ⓕ2	AGGREGATE 6"		
Ⓕ9	SEEDING		

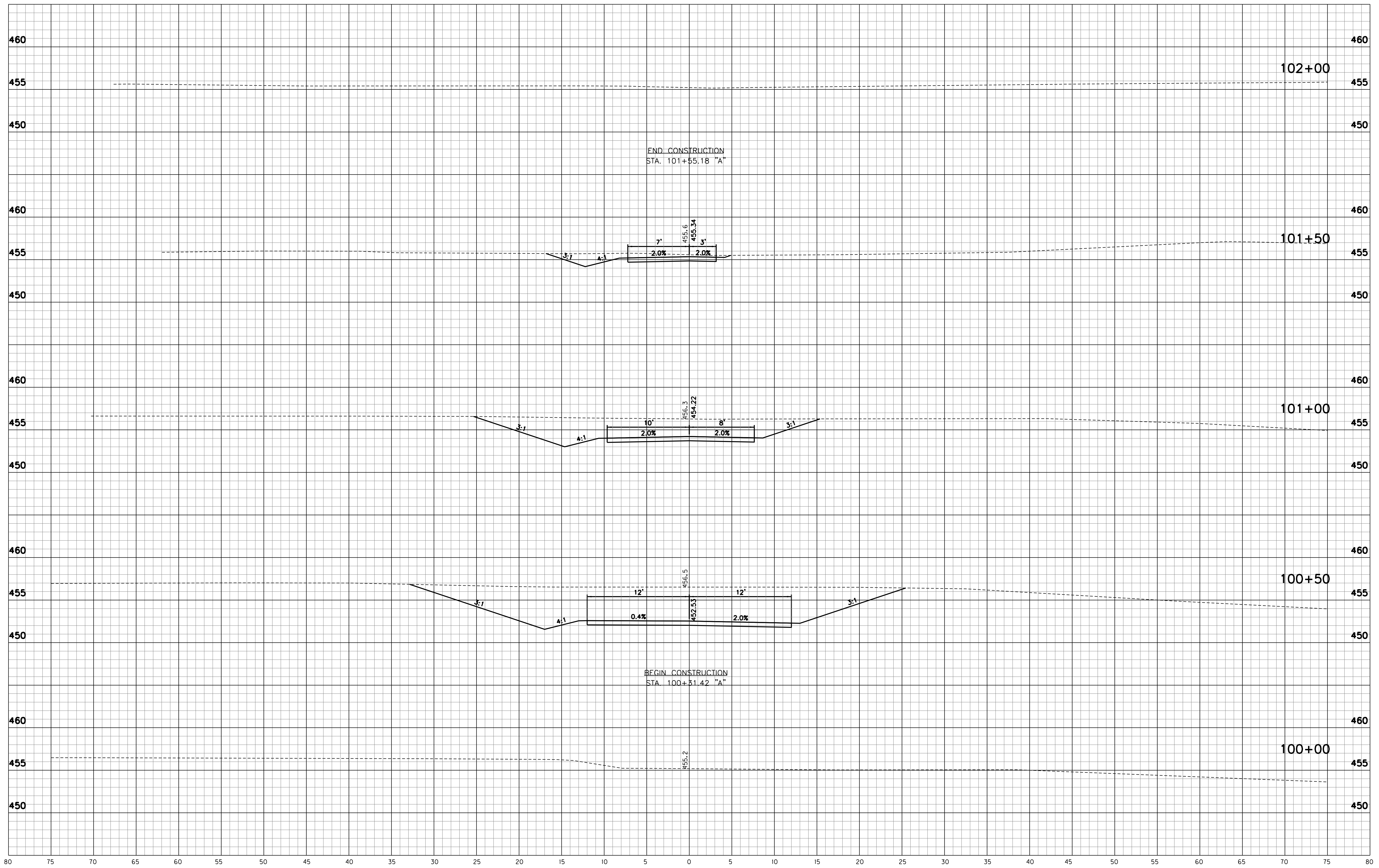


RECOMMENDED FOR APPROVAL	<i>D. Warren</i>	DESIGN ENGINEER	2-24-20	DATE
DESIGNED:	DW	DRAWN:	KM	
CHECKED:	PL	CHECKED:	DW	

**INDIANA DEPARTMENT
OF NATURAL RESOURCES**

EROSION CONTROL

HORIZONTAL SCALE	BRIDGE FILE
1" = 30'	
VERTICAL SCALE	DESIGNATION
	? N/A
SURVEY BOOK	SHEETS
	13 of 15
CONTRACT	PROJECT
	ENG2002871394



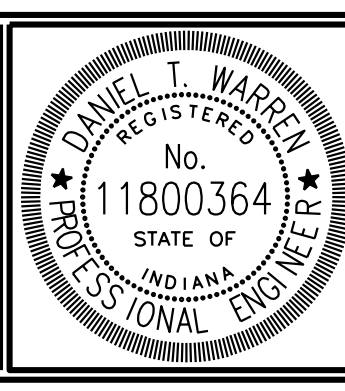
W:\DNR\2018-042 IDNR- Brooksbury Boat Ramp\Design\CAD\XS-APPROACH ROAD.dgn
 2/24/2020
 REVISION 3.0
 PDP:ahlg
 4:51:54 PM
 NGD:TLB

--	--	--	--

--	--

--	--

--	--

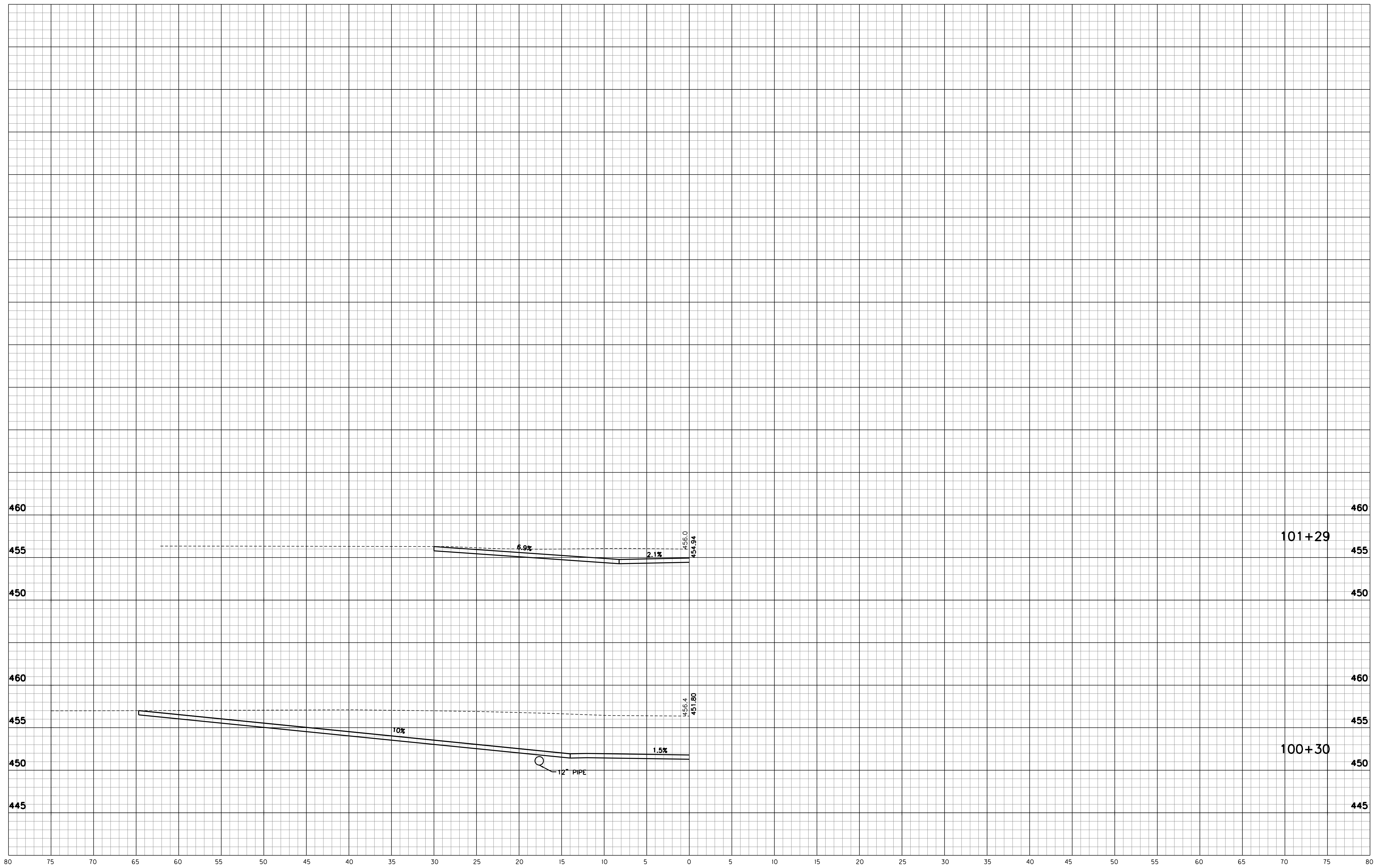


RECOMMENDED FOR APPROVAL	<i>D. Warren</i>	DESIGN ENGINEER	2-24-20	DATE
DESIGNED:	DW	DRAWN:	KM	
CHECKED:	PL	CHECKED:	DW	

INDIANA DEPARTMENT OF NATURAL RESOURCES
CROSS SECTIONS
STA. 100+00 TO STA. 102+00 "A"

HORIZONTAL SCALE	BRIDGE FILE
1" = 5'	
VERTICAL SCALE	DESIGNATION
1" = 5'	?
SURVEY BOOK	SHEETS
	14 of 15
CONTRACT	PROJECT
	ENG2002871394

W:\DNR\2018-042 IDNR - Brooksbury Boat Ramp\Design\CAD\XS-APPROACH ROAD.dgn
 2/24/2020 REVISION 3.0
 4:51:55 PM PDP:ahlg
 RGD:tlb

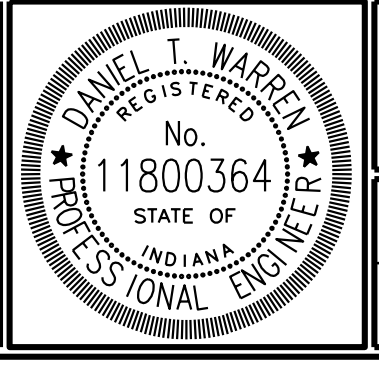


--	--	--	--

--	--

--	--

--	--



RECOMMENDED FOR APPROVAL	<i>D.T.W.</i>	DESIGN ENGINEER	2-24-20	DATE
DESIGNED:	DW	DRAWN:	KM	
CHECKED:	PL	CHECKED:	DW	

**INDIANA DEPARTMENT
OF NATURAL RESOURCES**

DRIVE SECTIONS

HORIZONTAL SCALE	BRIDGE FILE
1" = 5'	
VERTICAL SCALE	DESIGNATION
1" = 5'	?
SURVEY BOOK	SHEETS
	15 of 15
CONTRACT	PROJECT
	ENG2002871394