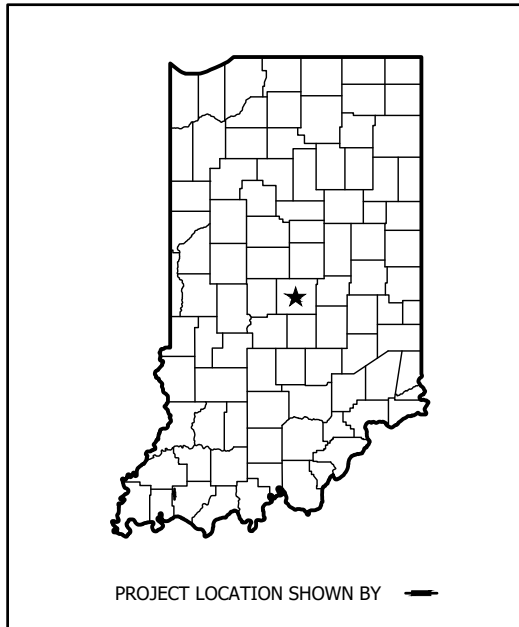


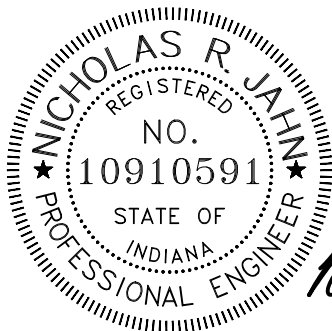
INDIANA DEPARTMENT OF NATURAL RESOURCES
BLUE GRASS FISH AND WILDLIFE AREA
PUBLIC ACCESS SITE
SITE PAVING IMPROVEMENTS



Blue Grass FWA Public Access Site
Paving Improvement
New Harmony Road
Warrick Co., IN

LATITUDE: 38° 04' 11.42" N

LONGITUDE: 87° 27' 41.22" W



Nicholas R. Jahn



VS ENGINEERING, INC.

203 Main Street
Evansville, Indiana 47708
Phone: (812) 401-3030
www.vsengineering.com

4275 North High School Rd
Indianapolis, Indiana 46254
Fax: (317) 293-4737
Phone: (317) 293-3542

Indiana Dept. of Natural Resources
Blue Grass FWA Public Access Site
Site Paving Improvement Project

SCALE:	As Noted
DATE:	2020.09.01
DRAWN BY:	JKS
PROJECT#:	20-4383
DRAWING:	1

DRAWING INDEX

NUMBER	DESCRIPTION
1	TITLE SHEET
2	INDEX AND GENERAL NOTES
3	VICINITY MAP
4	EXISTING SITE
5	DEMOLITION PLANS
6	PAVING AND PATCHING PLANS
7	STRIPING AND SIGNAGE PLANS
8	EROSION CONTROL BMP'S
9-13	SITE DETAILS

UTILITIES

ELECTRIC:

VECTREN ENERGY DELIVERY
 CONTACT: JODY CHAPMAN
 1 N. MAIN STREET
 EVANSVILLE, IN 47711
 812.491.4765
 Jody.Chapman@centerpointenergy.com

WATER:

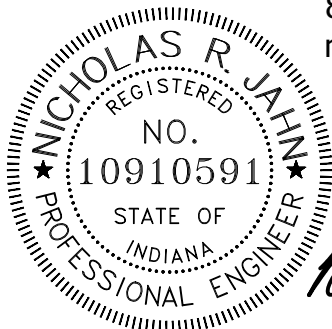
ELBERFELD WATER DEPARTMENT
 CONTACT: DENNIS MILLER
 175 SYCAMORE ST
 ELBERFELD, IN 47613
 812.983.4365
 812.598.2463

COMMUNICATION

ATT DISTRIBUTION
 CONTACT: MARC CLARK
 134 NW 6TH STREET
 EVANSVILLE, IN 47708
 812.464.6050
 mc3429@att.com

GAS:

VECTREN ENERGY DELIVERY
 CONTACT: SHELBY WILLIAMS
 1 N. MAIN STREET
 EVANSVILLE, IN 47711
 812.491.4765
 Shelby.Williams@centerpointenergy.com



Nicholas R. Jahn

Index



VS ENGINEERING, INC.

203 Main Street
 Evansville, Indiana 47708
 Phone: (812) 401-3030
 www.vsengineering.com

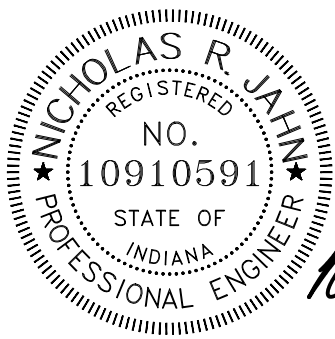
4275 North High School Rd
 Indianapolis, Indiana 46254
 Fax: (317) 293-4737
 Phone: (317) 293-3542

Indiana Dept. of Natural Resources
 Blue Grass FWA Public Access Site
 Site Paving Improvement Project

SCALE: As Noted
 DATE: 2020.09.01
 DRAWN BY: JKS
 PROJECT#: 20-4383
 DRAWING: 2



© 2020 Microsoft Corporation © 2020 Maxar © CNES (2020) Distribution Airbus DS



Nicholas R. Jahn

Driving Directions:

Take IN 37 South, becoming I-69 South. Follow I-69 South to Evansville and take exit 15 for Boonville New Harmony Road. Turn left onto Boonville New Harmony Road (East), continue 0.5 miles to Blue Grass FWA parking and boat launch, on the left (North).

Vicinity Map

VS ENGINEERING, INC.
 203 Main Street
 Evansville, Indiana 47708
 Phone: (812) 401-3030
 www.vsengineering.com

4275 North High School Rd
 Indianapolis, Indiana 46254
 Fax: (317) 293-4737
 Phone: (317) 293-3542

Indiana Dept. of Natural Resources
 Blue Grass FWA Public Access Site
 Site Paving Improvement Project

SCALE:	As Noted
DATE:	2020.09.01
DRAWN BY:	JKS
PROJECT#:	20-4383
DRAWING:	3



1" = 50'

Rip-Rap Revetment
to Remain in Place.

Concrete Boat Ramp
to Remain

Ex. Guard Rail
to Remain

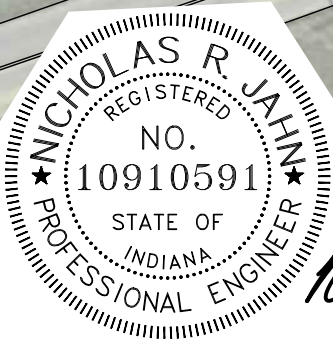
Concrete Parking
and Walks to Remain

Covered Sign Board
to Remain

Existing 4,477 Sq. Yds.
Gravel Parking Lot

22'
New Harmony Road

Existing Site



Nicholas R. Jahn



VS ENGINEERING, INC.

203 Main Street
Evansville, Indiana 47708
Phone: (812) 401-3030
www.vsengineering.com

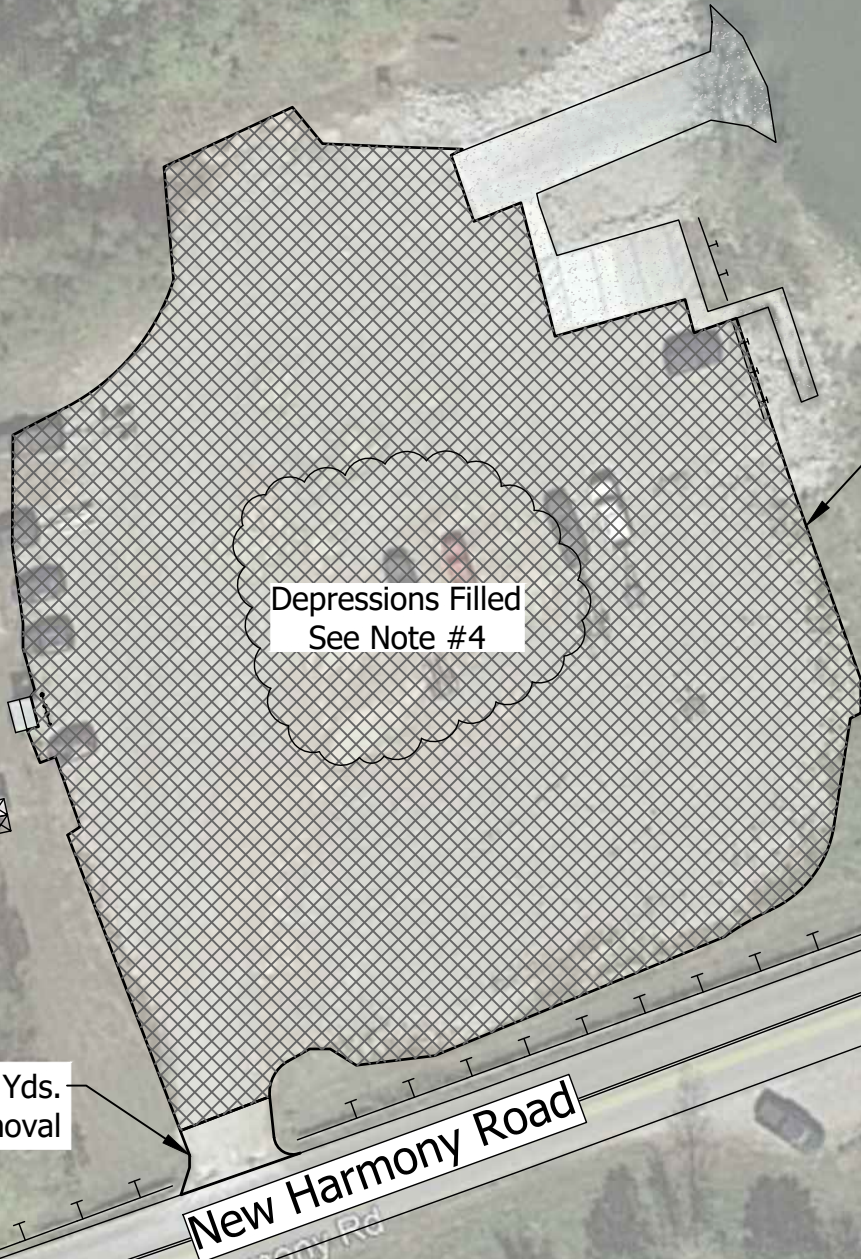
4275 North High School Rd
Indianapolis, Indiana 46254
Fax: (317) 293-4737
Phone: (317) 293-3542

Indiana Dept. of Natural Resources
Blue Grass FWA Public Access Site
Site Paving Improvement Project

SCALE: As Noted
DATE: 2020.09.01
DRAWN BY: JKS
PROJECT#: 20-4383
DRAWING: 4



1" = 50'



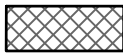
4,433 Sq. Yds.
Gravel Scraping

Depressions Filled
See Note #4

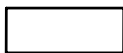
44 Sq. Yds.
Gravel Removal

New Harmony Road

Demolition Plan



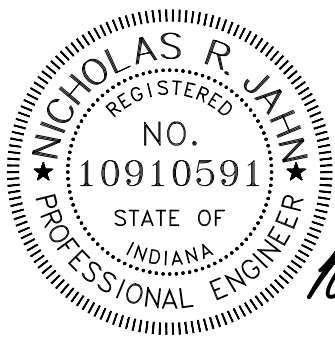
Gravel Scraping Area



Gravel Removal Area

Demolition Notes:

1. Existing Concrete Pads and Aprons to Remain.
2. Existing Guard Rails and Bollards to Remain.
3. Gravel Surface to be Potholed for Total Rock Depth, Scraped a Nominal 1/2" Depth, and Patched Where Necessary Prior to Any HMA Surface Placement. Coordinate with Site Manager for Waste Disposal Area.
4. Contractor is to Fill Depressions and Ponding Locations with Clean #53 Stone to Provide Drainage off of Lot in Accordance to Existing Drainage Patterns.



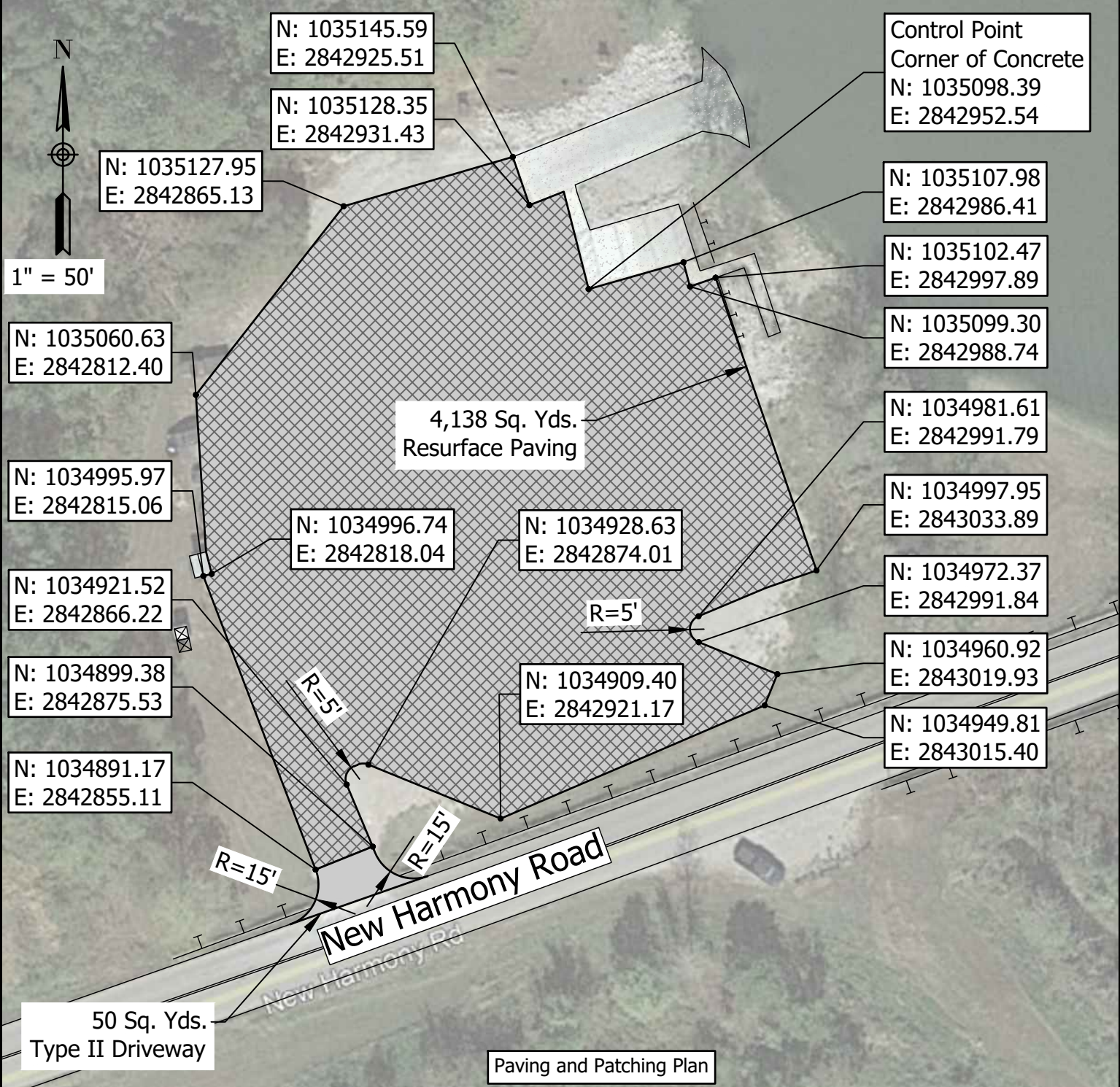
Nicholas R. Jahn

VS ENGINEERING, INC.
 203 Main Street
 Evansville, Indiana 47708
 Phone: (812) 401-3030
 www.vsengineering.com

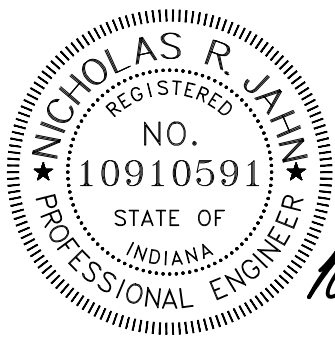
4275 North High School Rd
 Indianapolis, Indiana 46254
 Fax: (317) 293-4737
 Phone: (317) 293-3542

Indiana Dept. of Natural Resources
 Blue Grass FWA Public Access Site
 Site Paving Improvement Project



SCALE: As Noted
 DATE: 2020.09.01
 DRAWN BY: JKS
 PROJECT#: 20-4383
 DRAWING: 5



Paving and Patching Plan



Nicholas R. Jahn

-  HMA Resurfacing Paving
-  Type II Driveway Paving

- General Notes:
1. Existing Concrete Aprons and Pads to Remain.
 2. Provide Perimeter Grading where Necessary to Prevent Water Ponding on Pavement

VS ENGINEERING, INC.
203 Main Street
Evansville, Indiana 47708
Phone: (812) 401-3030
www.vsengineering.com

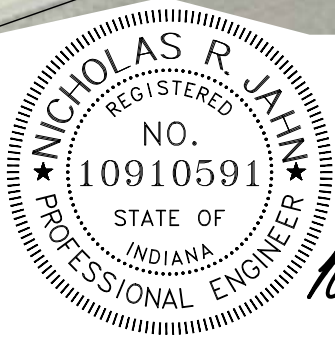
4275 North High School Rd
Indianapolis, Indiana 46254
Fax: (317) 293-4737
Phone: (317) 293-3542

Indiana Dept. of Natural Resources
Blue Grass FWA Public Access Site
Site Paving Improvement Project

SCALE: As Noted
DATE: 2020.09.01
DRAWN BY: JKS
PROJECT#: 20-4383
DRAWING: 6



Pavement Striping and Signage Plan



Nicholas R. Jahn

General Notes:

1. See Sheet 12 for ADA Stall Striping and Signage Requirements.
2. Nominal Parking is 9' Wide by 18' Deep at 90°.
3. Boat Trailer Parking Stall is 12' Wide by 40' Deep at 45°.
4. Parking Stalls Provided: 1 ADA Van Stall, 1 ADA Passenger Stall, 17 Trailer Stalls, 17 Passenger Vehicle Stalls.

VS ENGINEERING, INC.
 203 Main Street
 Evansville, Indiana 47708
 Phone: (812) 401-3030
 www.vsengineering.com

4275 North High School Rd
 Indianapolis, Indiana 46254
 Fax: (317) 293-4737
 Phone: (317) 293-3542

Indiana Dept. of Natural Resources
 Blue Grass FWA Public Access Site
 Site Paving Improvement Project

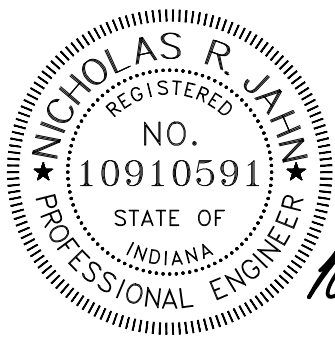
SCALE:	As Noted
DATE:	2020.09.01
DRAWN BY:	JKS
PROJECT#:	20-4383
DRAWING:	7



Erosion Control Plan

Erosion Control Notes:

- (L) Flow Leaving Site
- (E) Flow Entering Site
- Existing Surface Overflow Direction (Sheet & Shallow Concentrated Flow)
- Portable Latrine - Suggested Location
- Construction Dumpster - Suggested Location



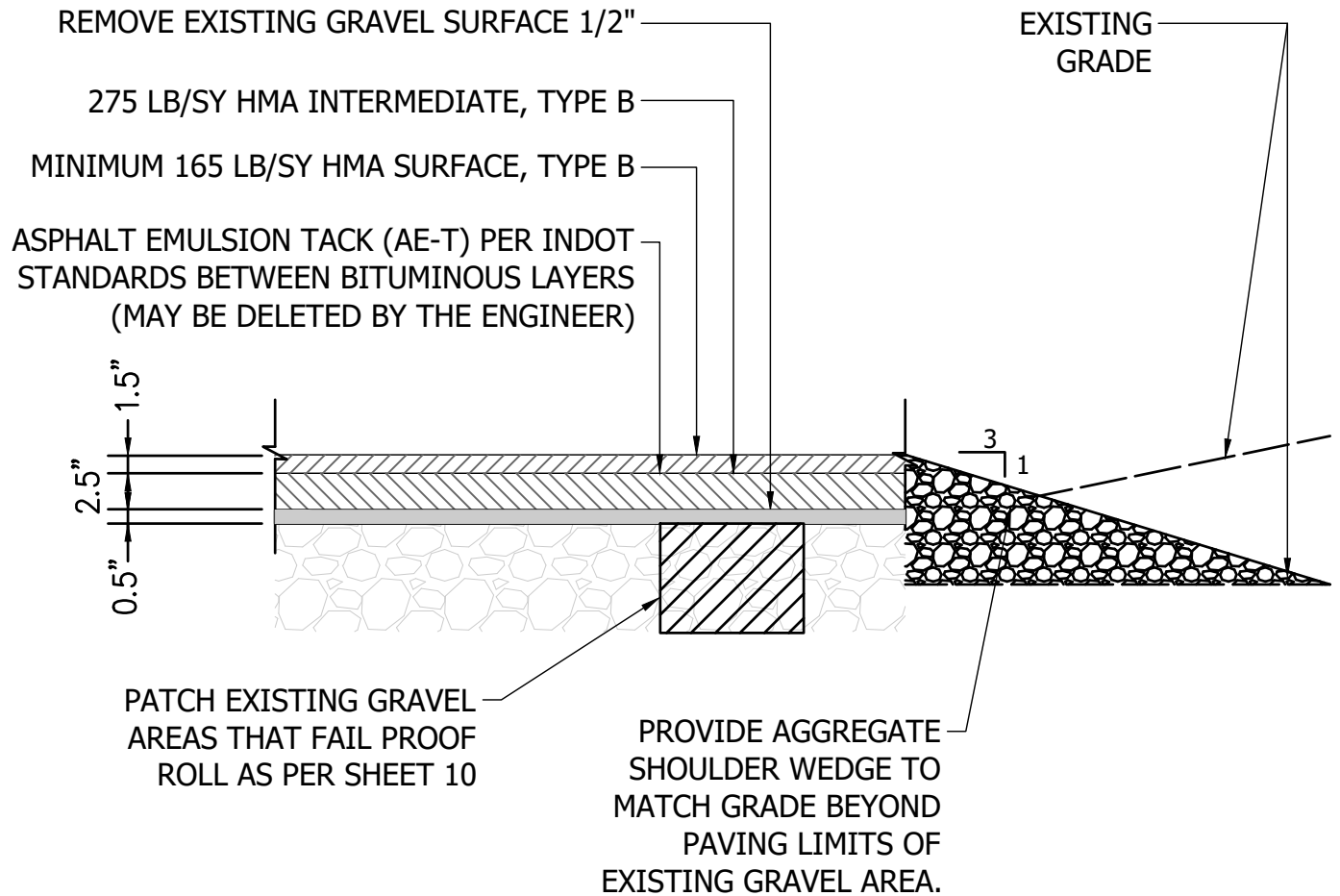
Nicholas R. Jahn

VS ENGINEERING, INC.
 203 Main Street
 Evansville, Indiana 47708
 Phone: (812) 401-3030
 www.vsengineering.com

4275 North High School Rd
 Indianapolis, Indiana 46254
 Fax: (317) 293-4737
 Phone: (317) 293-3542

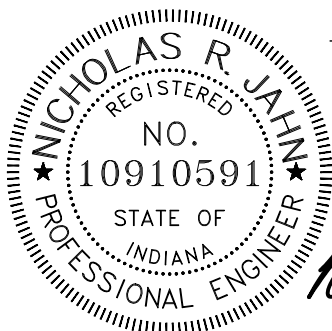
Indiana Dept. of Natural Resources
 Blue Grass FWA Public Access Site
 Site Paving Improvement Project

SCALE: As Noted
 DATE: 2020.09.01
 DRAWN BY: JKS
 PROJECT#: 20-4383
 DRAWING: 8



HMA SURFACING OF EXISTING AGGREGATE

NTS



Nicholas R. Jahn

DETAIL SHEET



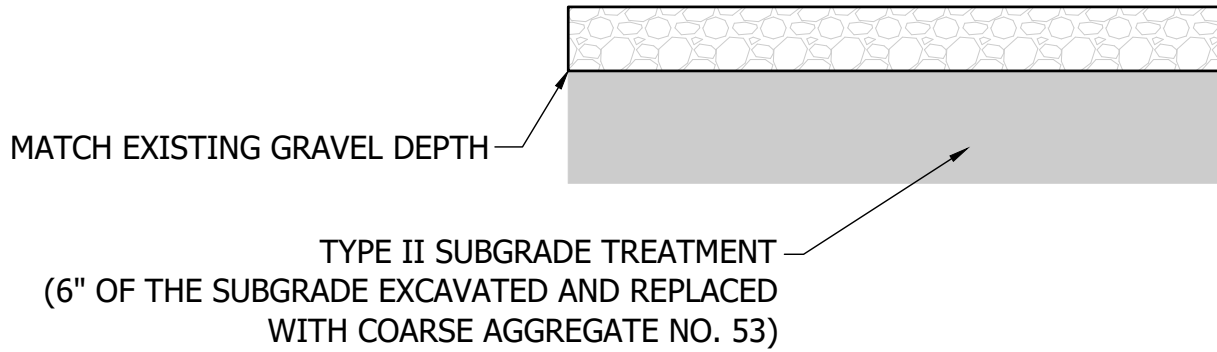
VS ENGINEERING, INC.

203 Main Street
Evansville, Indiana 47708
Phone: (812) 401-3030
www.vsengineering.com

4275 North High School Rd
Indianapolis, Indiana 46254
Fax: (317) 293-4737
Phone: (317) 293-3542

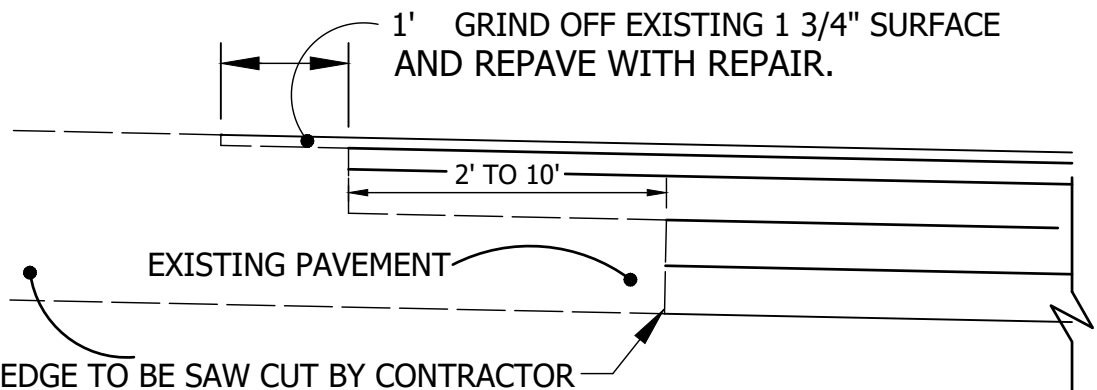
Indiana Dept. of Natural Resources
Blue Grass FWA Public Access Site
Site Paving Improvement Project

SCALE: As Noted
DATE: 2020.09.01
DRAWN BY: JKS
PROJECT#: 20-4383
DRAWING: 9



GRAVEL PATCH & REPAIR

NTS

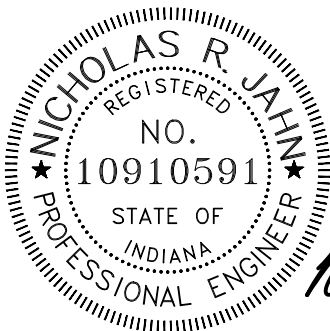


ALL EXISTING BITUMINOUS SURFACES THAT MEET WITH THE NEW BITUMINOUS SURFACES SHALL BE CLEANED AND COVERED WITH ASPHALT EMULSION TACK (AE-T) PER INDOT STANDARDS.
(MAY BE DELETED BY THE ENGINEER)

MILLING SHALL CONFORM TO SEC. 306 OF INDOT SPECS.

ASPHALT JOINT DETAIL

NTS



Nicholas R. Jahn

DETAIL SHEET



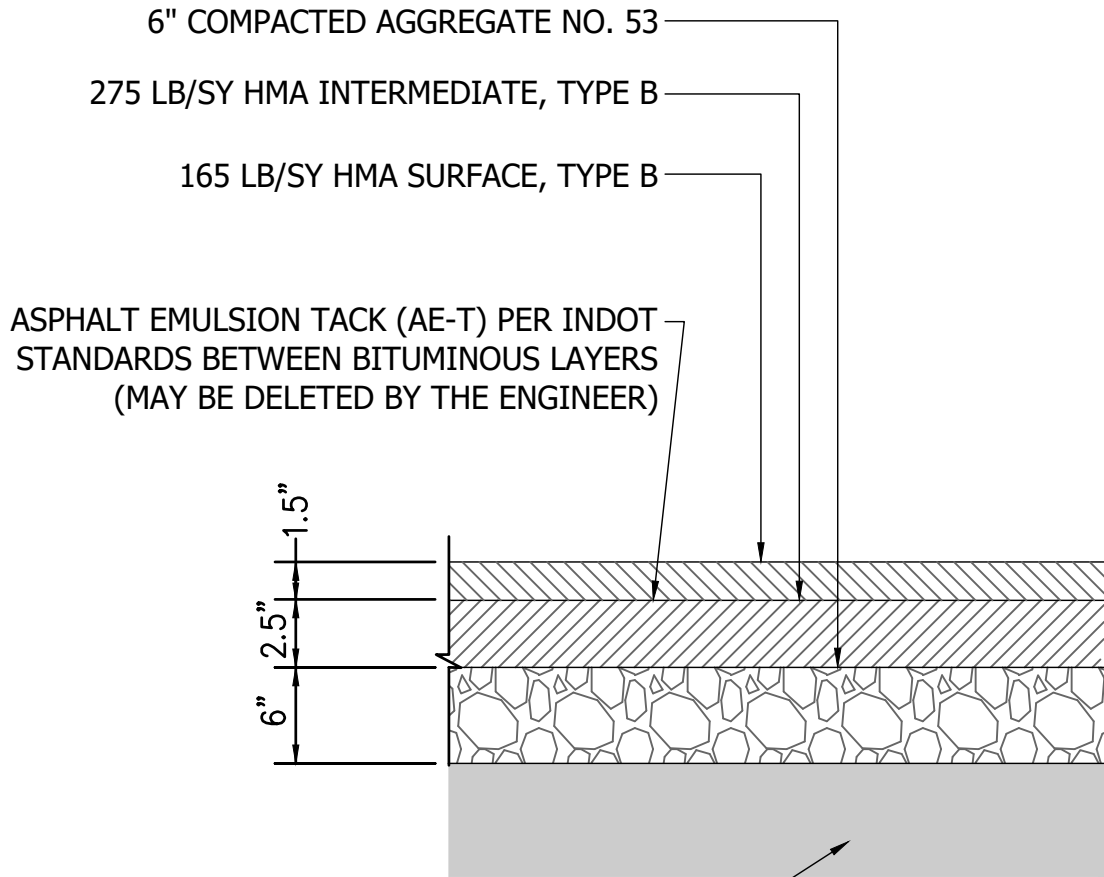
VS ENGINEERING, INC.

203 Main Street
Evansville, Indiana 47708
Phone: (812) 401-3030
www.vsengineering.com

4275 North High School Rd
Indianapolis, Indiana 46254
Fax: (317) 293-4737
Phone: (317) 293-3542

Indiana Dept. of Natural Resources
Blue Grass FWA Public Access Site
Site Paving Improvement Project

SCALE:	As Noted
DATE:	2020.09.01
DRAWN BY:	JKS
PROJECT#:	20-4383
DRAWING:	10

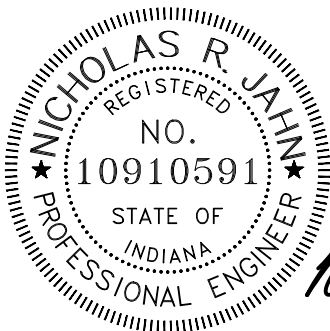


TYPE II SUBGRADE TREATMENT*
 (6" OF THE SUBGRADE EXCAVATED AND REPLACED
 WITH COARSE AGGREGATE NO. 53)

* IF SUBGRADE FAILS PROOF ROLLING, REPLACE
 SUBGRADE TREATMENT II WITH TYPE IV
 SUBGRADE TREATMENT.

TYPE II DRIVEWAY PAVEMENT SECTION

NTS



Nicholas R. Jahn

DETAIL SHEET



VS ENGINEERING, INC.

203 Main Street
 Evansville, Indiana 47708
 Phone: (812) 401-3030
 www.vsengineering.com

4275 North High School Rd
 Indianapolis, Indiana 46254
 Fax: (317) 293-4737
 Phone: (317) 293-3542

Indiana Dept. of Natural Resources
 Blue Grass FWA Public Access Site
 Site Paving Improvement Project

SCALE: As Noted
 DATE: 2020.09.01
 DRAWN BY: JKS
 PROJECT#: 20-4383
 DRAWING: 11



R7-8
12"X18"

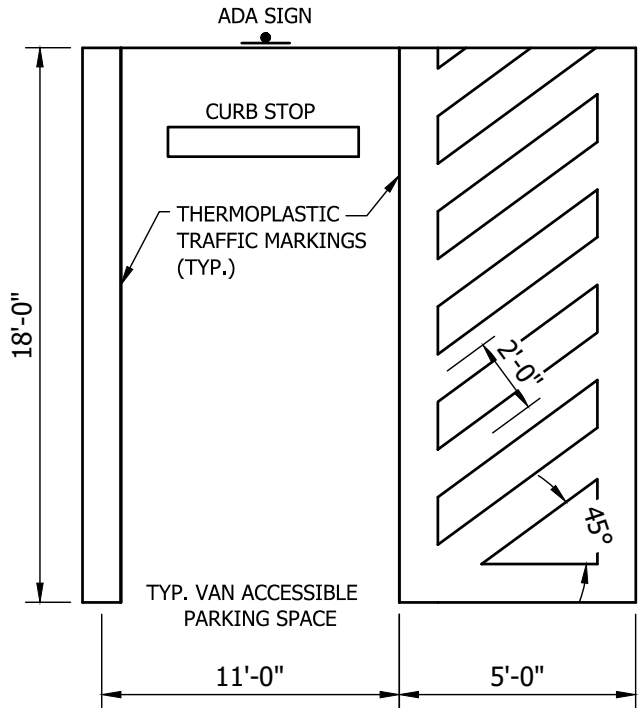


12"X6"

MOUNT BENEATH R7-8a FOR VAN ACCESSIBLE SPACES

NOTE:

1. REFLECTIVE BLUE BACKGROUND WHITE LETTERING AND SYMBOL LETTERING MINIMUM 1" HEIGHT.
2. SIGN TO BE MOUNTED ON 2" METAL POST.
3. ONE SIGN PER ACCESSIBLE SPACE.
4. VAN ACCESSIBLE SIGN TO BE MOUNTED BELOW STANDARD ACCESSIBLE SIGN WHERE SPECIFIED ON PLANS. COLORING TO MATCH.
5. SEE DETAIL SHEET 12 FOR ADA SIGN MOUNTING



CURB STOPS 2.5' OFF OF EDGE OF PAVEMENT (TYP.)

ADA PARKING SIGN (TYP.)

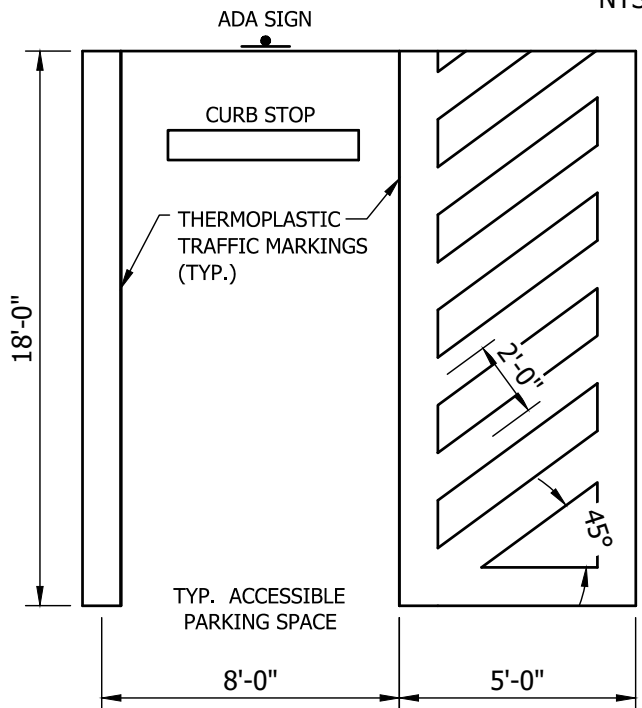
NTS

ADA PARKING STALL (VAN)

NTS

GENERAL NOTES:

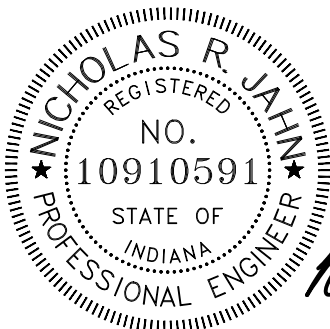
1. PAVEMENT MARKINGS ARE TYPICAL 4" WIDTH FOR STRIPING AND ADA SYMBOL.
2. TRAFFIC MARKING APPLICATIONS SHALL BE THERMOPLASTIC.
3. ADA STRIPING SHALL BE BLUE AS PER IAC 5-16-9. ALL OTHER ON-SITE STRIPING SHALL BE WHITE.
4. PASSENGER VEHICLES MAY SHARE THE VAN LOADING ACCESS AISLE WHEN ADJACENT TO EACH OTHER.
5. SLOPES WITHIN THE PARKING STALL, ACCESS AISLE, AND PATH OF TRAVEL SHALL NOT EXCEED 2.0% SLOPES. RAMPS SHALL NOT EXCEED 12:1 SLOPES WITH A MAXIMUM DISTANCE OF 6'-0".



CURB STOPS 2.5' OFF OF EDGE OF PAVEMENT (TYP.)

ADA PARKING STALL (CAR)

NTS



Nicholas R. Jahn

DETAIL SHEET



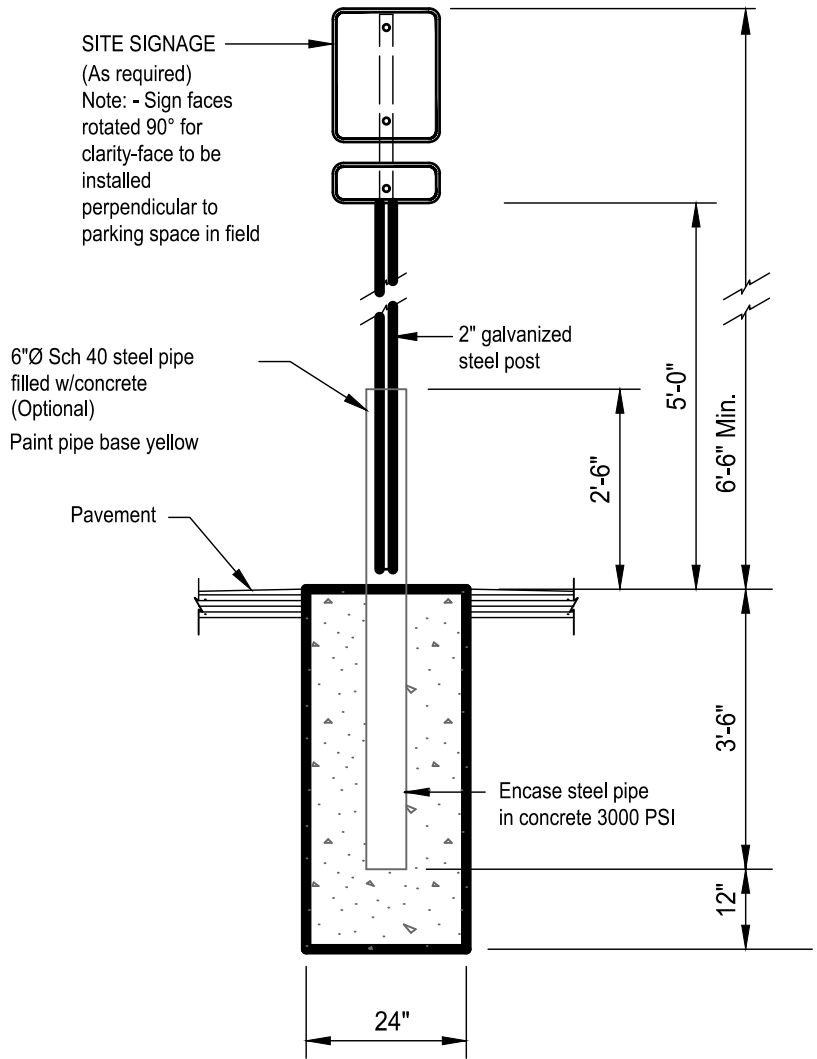
VS ENGINEERING, INC.

203 Main Street
Evansville, Indiana 47708
Phone: (812) 401-3030
www.vsengineering.com

4275 North High School Rd
Indianapolis, Indiana 46254
Fax: (317) 293-4737
Phone: (317) 293-3542

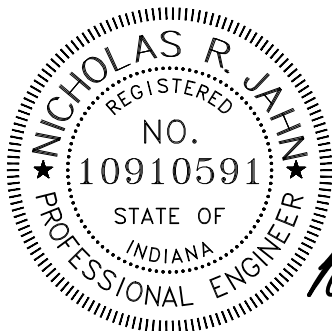
Indiana Dept. of Natural Resources
Blue Grass FWA Public Access Site
Site Paving Improvement Project

SCALE: As Noted
DATE: 2020.09.01
DRAWN BY: JKS
PROJECT#: 20-4383
DRAWING: 12



SIGN POST MOUNTING (TYP.)

NTS



Nicholas R. Jahn

DETAIL SHEET



VS ENGINEERING, INC.

203 Main Street
Evansville, Indiana 47708
Phone: (812) 401-3030
www.vsengineering.com

4275 North High School Rd
Indianapolis, Indiana 46254
Fax: (317) 293-4737
Phone: (317) 293-3542

Indiana Dept. of Natural Resources
Blue Grass FWA Public Access Site
Site Paving Improvement Project

SCALE: As Noted
DATE: 2020.09.01
DRAWN BY: JKS
PROJECT#: 20-4383
DRAWING: 13