

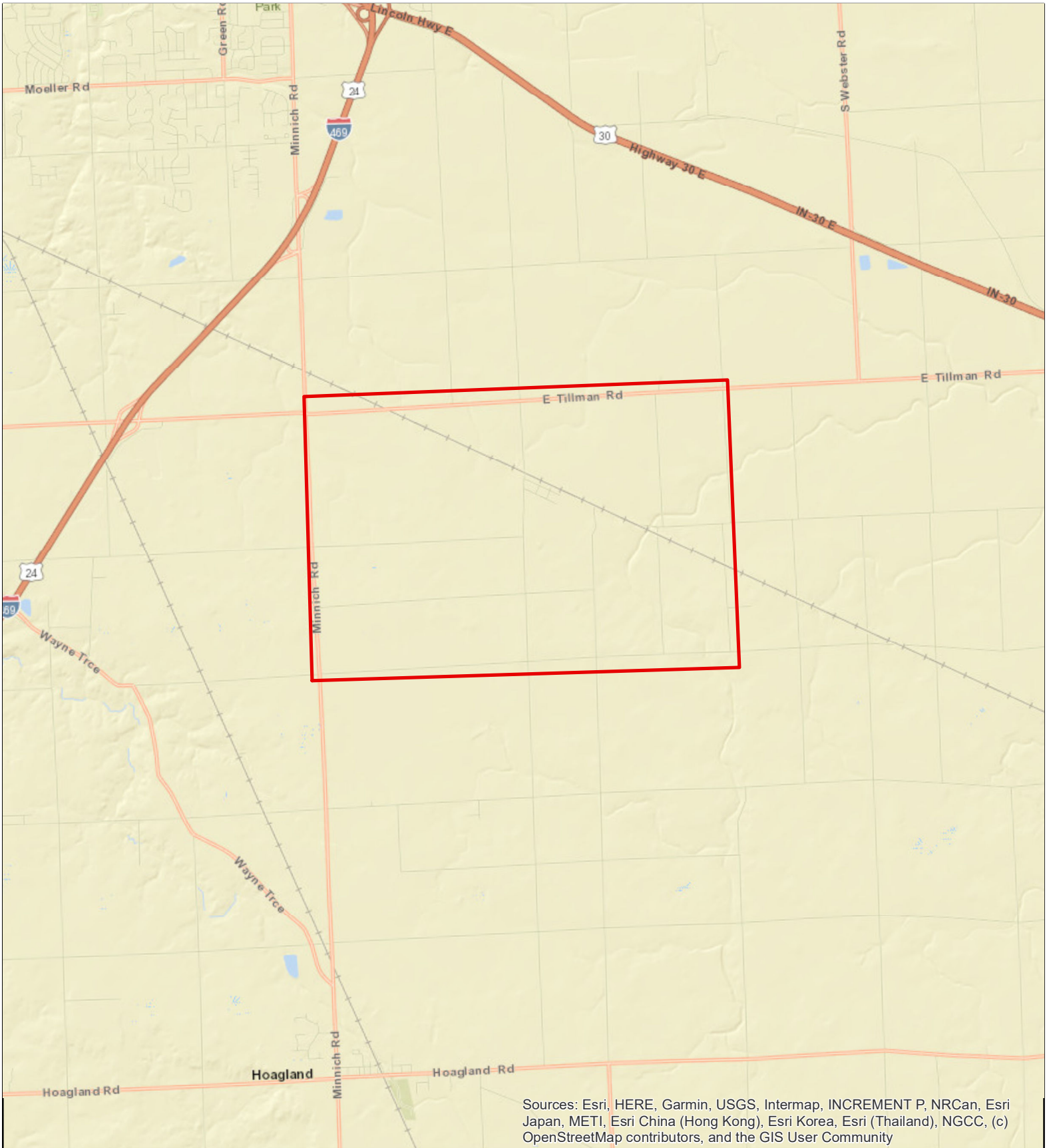
Proposed Gypsy Moth Treatments 2021



Acres: 4312

County: Allen
Treatment Site: Maples Btk21

Treatment: Btk



Sources: Esri, HERE, Garmin, USGS, Intermap, INCREMENT P, NRCan, Esri Japan, METI, Esri China (Hong Kong), Esri Korea, Esri (Thailand), NGCC, (c) OpenStreetMap contributors, and the GIS User Community

Author: K.Stultz

Date: 10/27/2020

Data Source: IDNR,
STS Foundation

