

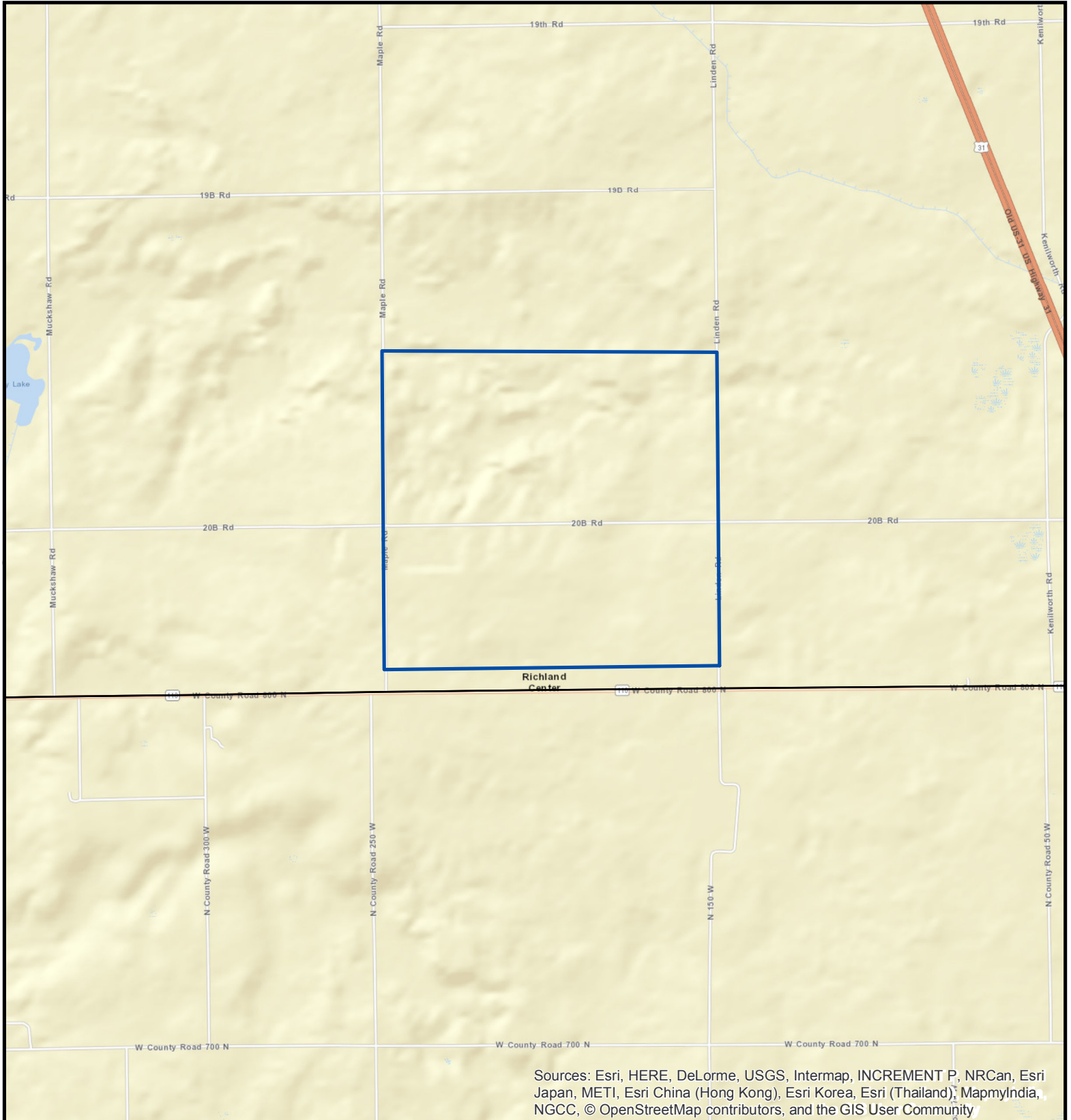
Proposed Gypsy Moth Treatments 2020



Acres: 616

County: Marshall
Treatment Site: Green Twp MD 20

Treatment: MD



Sources: Esri, HERE, DeLorme, USGS, Intermap, INCREMENT P, NRCan, Esri Japan, METI, Esri China (Hong Kong), Esri Korea, Esri (Thailand), MapmyIndia, NGCC, © OpenStreetMap contributors, and the GIS User Community

