

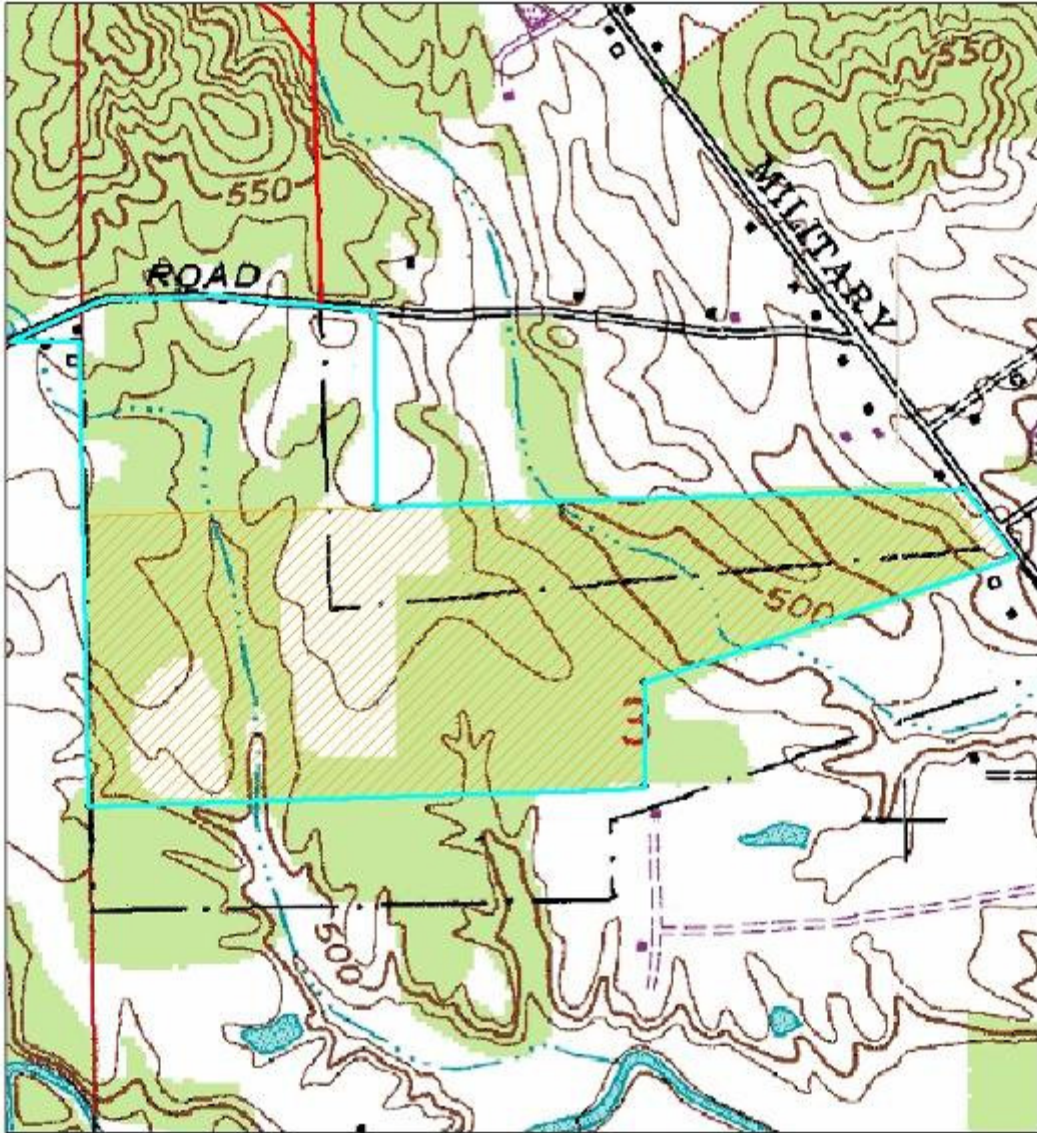
Clark State Forest
Compartment 15, Tract 8
Management Guide Amendment
January 13, 2010

The south 101.65 acres of C15T8 is set to become State surplus property to be traded to the Clark-Floyd County Landfill for approximately 102.26 acres in five tracts. The DoF has negotiated to maintain timber rights for the property to be traded and will apply a complete salvage harvest to the traded parcel excluding a 200' buffer setback from neighbors, although, "select trees may be cut from the buffer."

A 2006 forest inventory found 877,700 board feet of sawtimber in the tract. A 2007 harvest removed 227,700 board feet leaving an estimated 650,000 board feet in the tract. Using these estimates, the 101.65 acres may yield 457,241 board feet plus cord volume. The tract will be marked beginning in January, 2010 and be sold as soon as possible with a one year contract. Former yarding areas and skid trails will be reopened.

A May 20, 2007 review of the natural heritage database revealed no listed plants, animals or sensitive communities within the subject area.

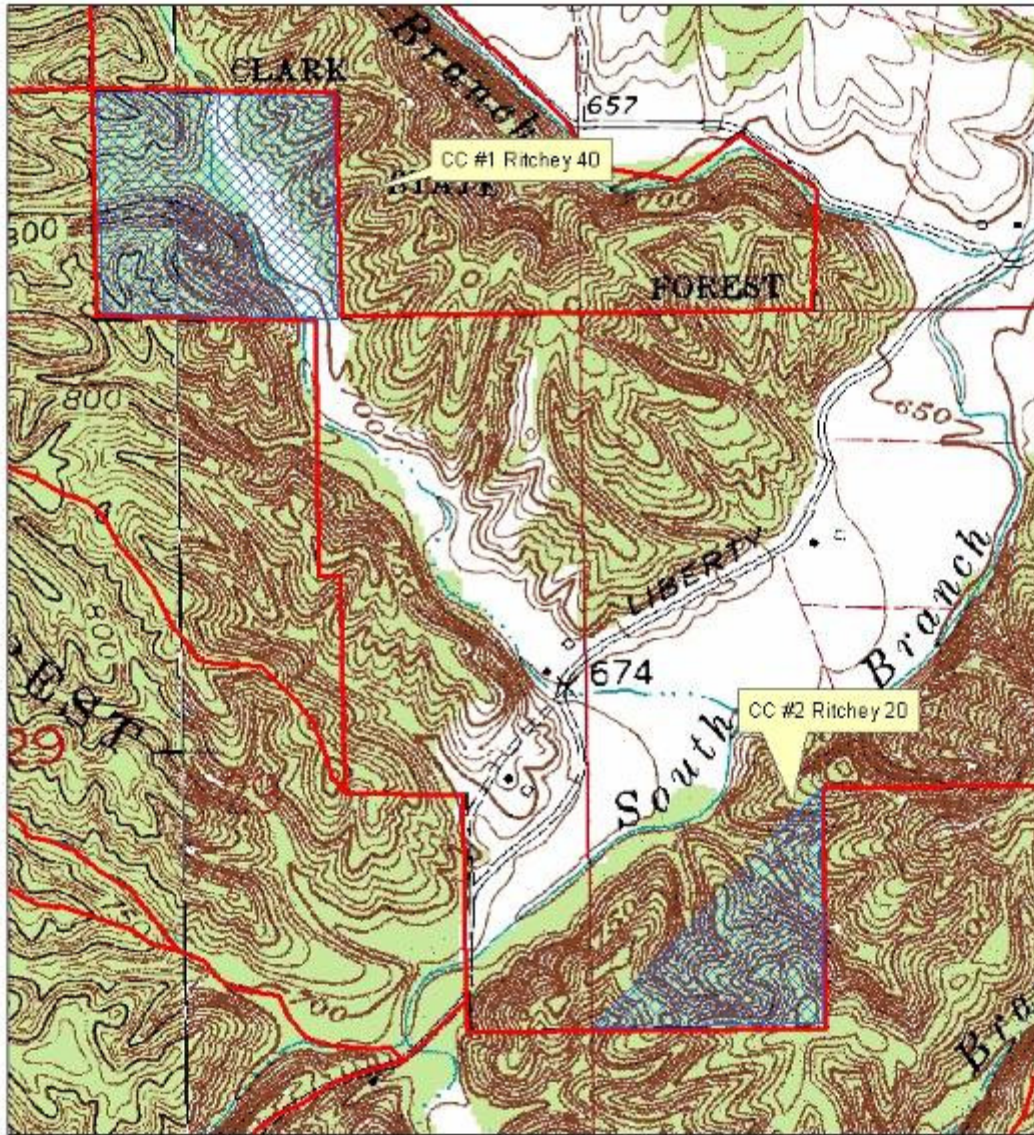
Clark State Forest C15T8 Surplus



1,000

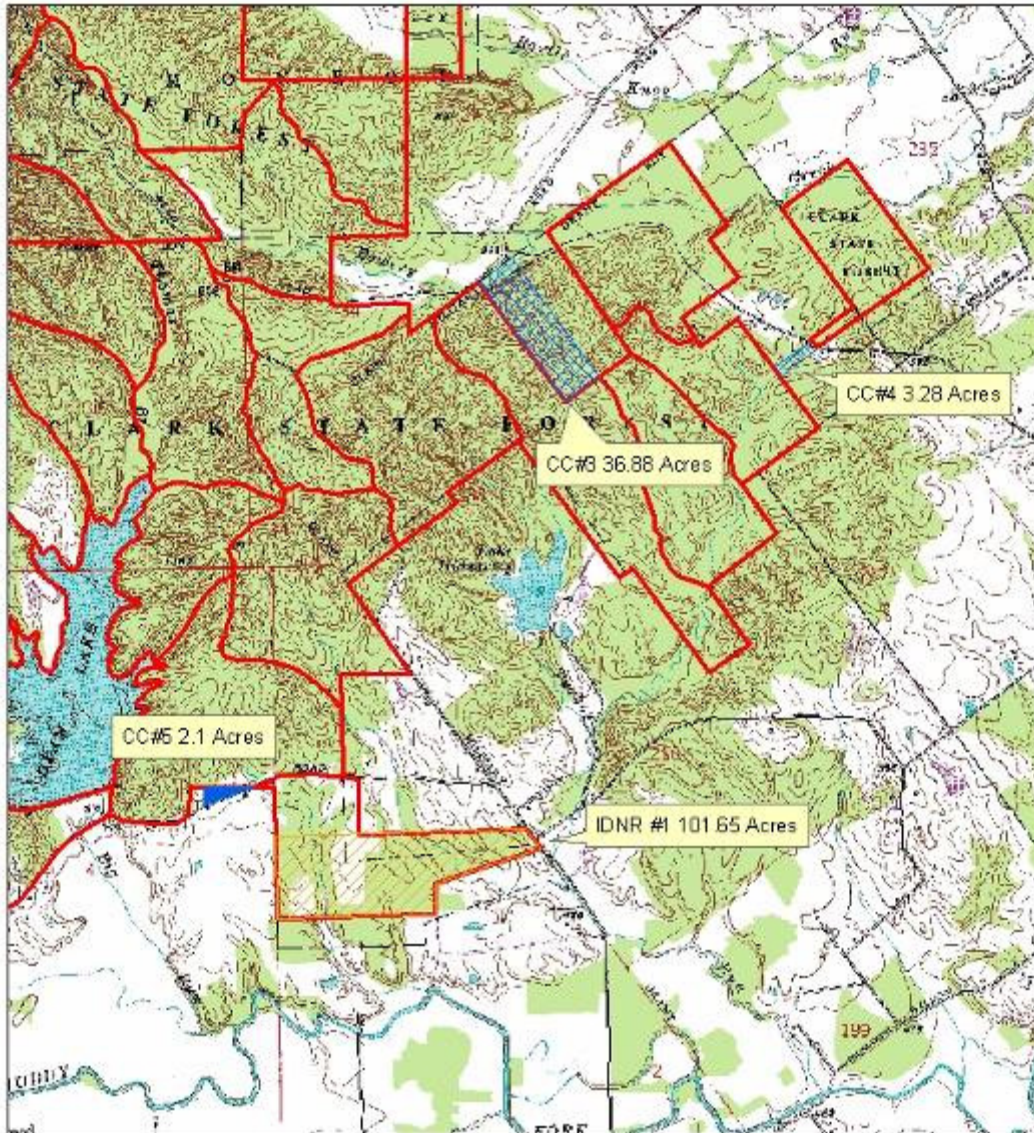
Feet

Clark State Forest C15T8 Consideration Tracts



1,200
Feet

Clark State Forest C15T8 Consideration Tracts



3,600

Feet