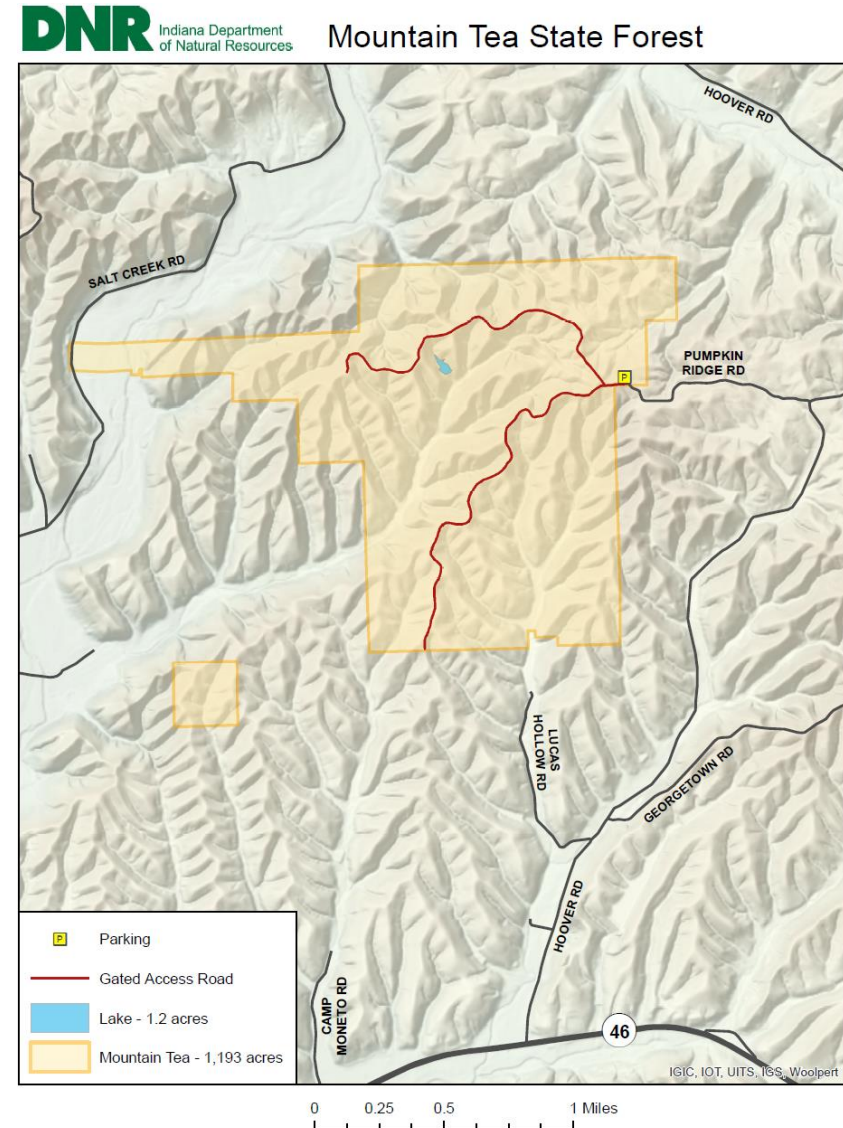


# Mountain Tea State Forest

# Property Overview

- Established in 2020
- 1,223 acres
- Located in Brown County near Nashville, Indiana
- 1 parking area
- Small pond (fishing allowed)
- Gated access road for walking/hiking access
- Wildlife viewing opportunities
- Hunting
- No camping



# Completed Projects

- As part of the ForestIN program, 16 acres of open land was planted to trees. Approximately 16,400 seedling were planted:
  - Northern red oak (8,200)
  - White oak (8,200)



# Upcoming Projects

- Improve public parking off Forest-Pumpkin Ridge Road

## Prescribed Fire

Approximately 83 acres of chestnut oak dominated oak-hickory forest in Compartment 16 Tract 9 is planned for a prescribed fire in 2021. Chestnut oak is the most common overstory tree and American beech the most common understory tree. Without human intervention such as cutting and/or burning, our oak-hickory forests are changing over to mesic species. This will have a catastrophic loss to the ecosystem including the trees, shrubs, herbaceous plants, and wildlife that depend on this forest ecosystem type for survival.

