

PROPERTY RULES AND REGULATIONS

CAMPING

- *Cost \$13.00 per night Family Campground, \$16.00 Horseman's Camp
- *Camping allowed in designated areas only
- *Sites are First Come/First Serve
- *Limit 6 people per site, 2 vehicles, 2 tents
- *Campers under 18 must be accompanied by a person over 18
- *Maximum stay is 14 days

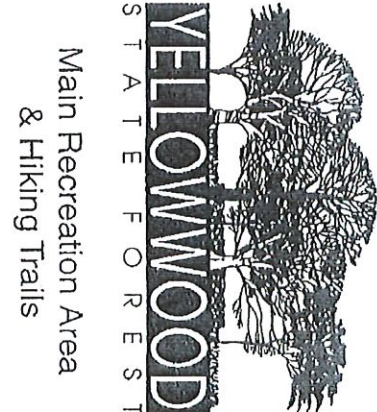
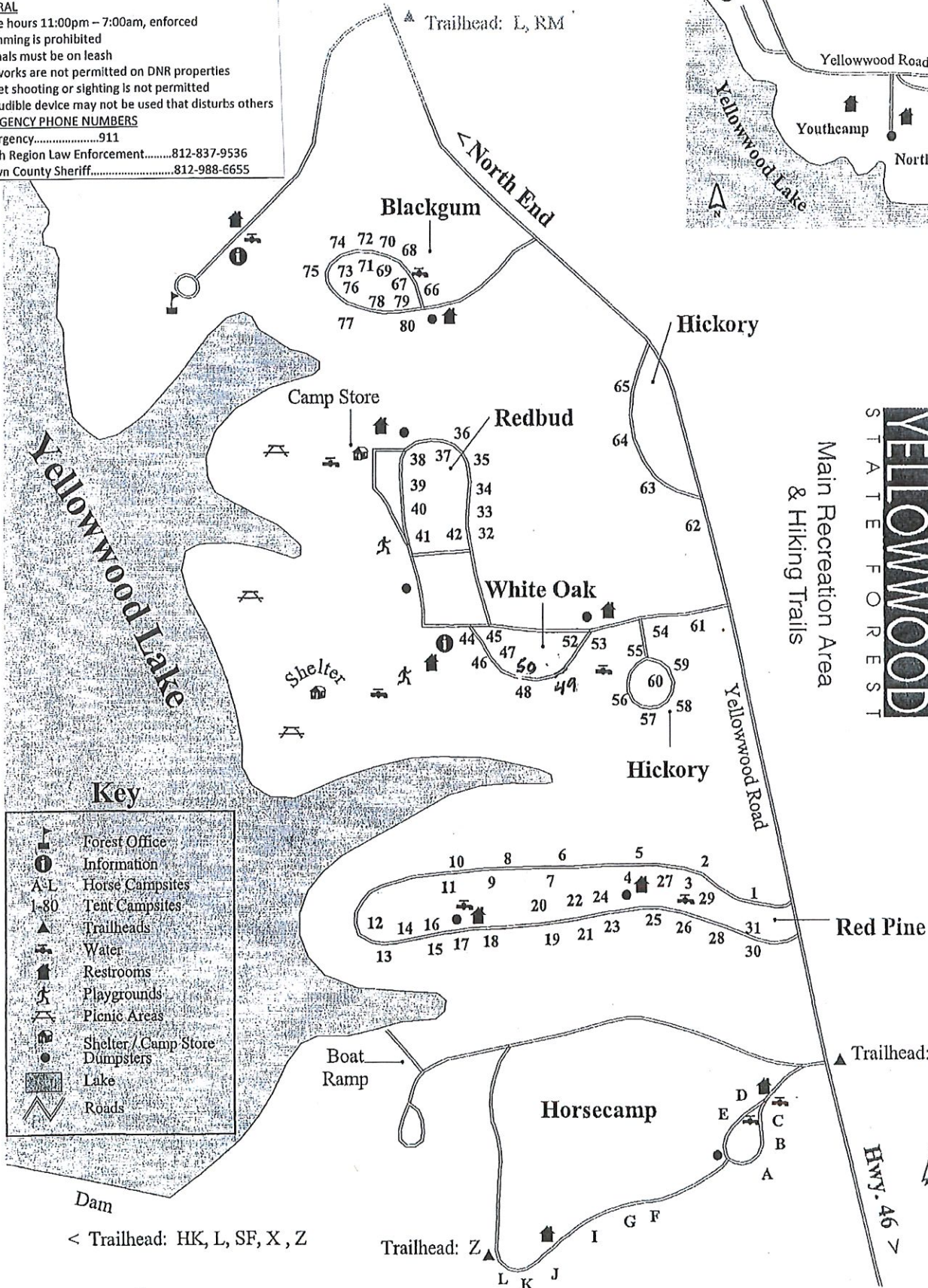
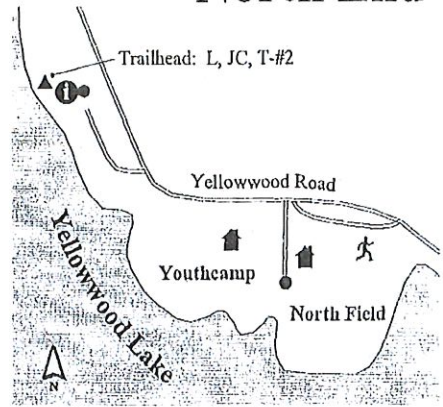
GENERAL

- *Quiet hours 11:00pm - 7:00am, enforced
- *Swimming is prohibited
- *Animals must be on leash
- *Fireworks are not permitted on DNR properties
- *Target shooting or sighting is not permitted
- *An audible device may not be used that disturbs others

EMERGENCY PHONE NUMBERS

- *Emergency.....911
- *South Region Law Enforcement.....812-837-9536
- *Brown County Sheriff.....812-988-6655

North End



Main Recreation Area & Hiking Trails

Key

	Forest Office
	Information
	Horse Campsites
	Tent Campsites
	Trailheads
	Water
	Restrooms
	Playgrounds
	Picnic Areas
	Shelter/Camp Store
	Dumpsters
	Lake
	Roads

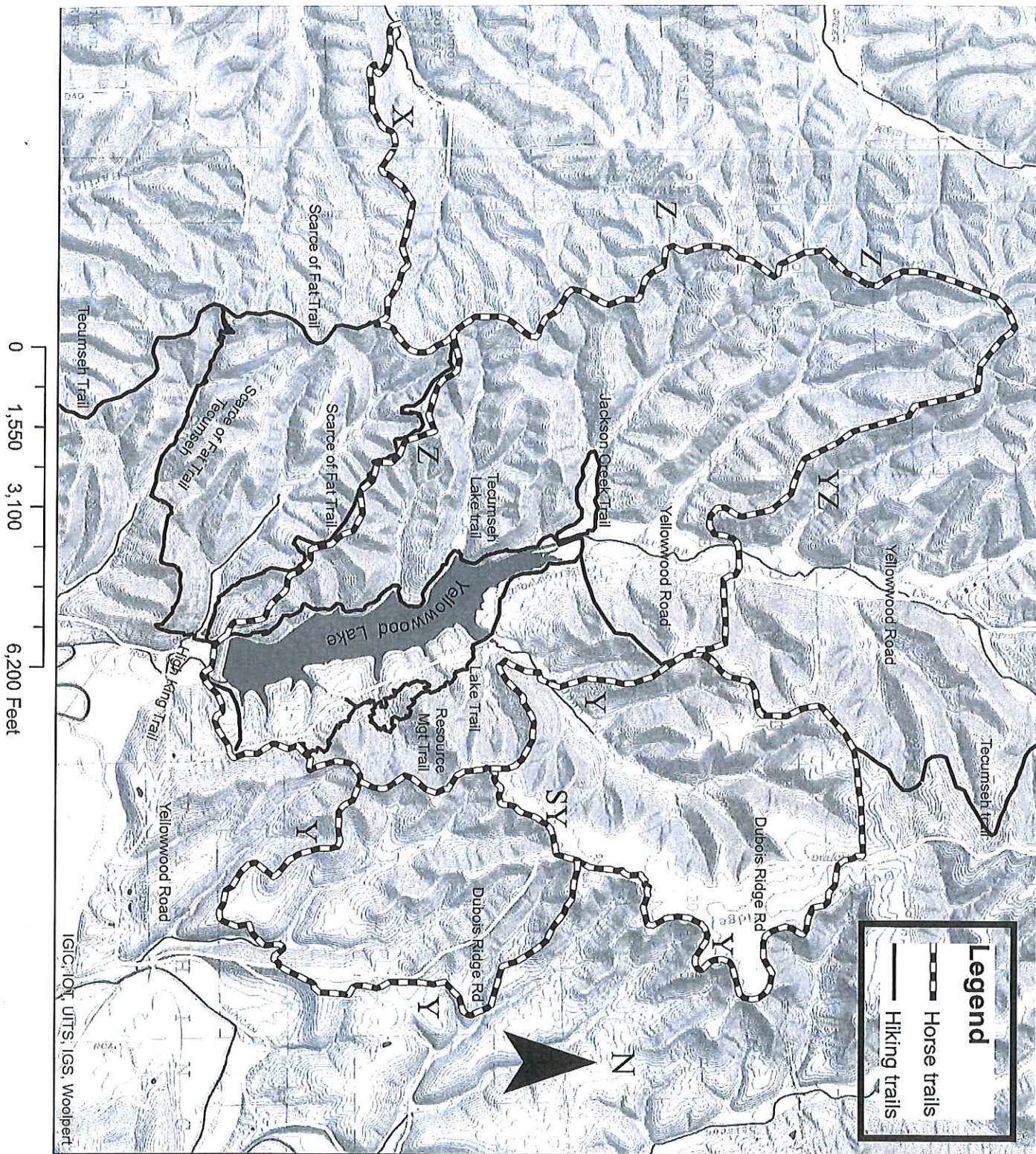
< Trailhead: HK, L, SF, X, Z

Trailhead: Z

HWY. 46

Trails **Length**

HK	0.3 mi.	'High King' is a steep meandering trail that leads up to a scenic view. Connects to East end of 'SF'.
JC	1.3 mi.	Self-guided interpretive 'Jackson Creek' trail is Handicap Accessible (0.5 mi.) to Jackson Creek.
L	4.5 mi.	'Lake' trail circles Yellowwood Lake and is marked with white wave symbols, part of 'JC', 'R', 'Z'.
R	1.3 mi.	Brochures available at Visitor Center for the self-guided interpretive 'Resource Management' trail.
SF	4.7 mi.	Portions of 'Scarce O' Fat' trail follow firelanes. Watch for markers.
SY	0.6 mi.	'Short Y' is an alternative trail that cuts 'Y' by roughly half the distance.
W	1.2 mi.	'W' connects to Brown County State Park Horse Trail 'D'. Access on Crooked Creek Road.
Y	8.6 mi.	'Y' starts and ends near Horse Campground.
Z	4.0 mi.	'Z' leaves from Horse Campground and goes up ridge West of Yellowwood Lake.
YZ	3.0 mi	'YZ' trails connects trail 'Y' with trail 'Z'



Yellowwood Trail Map