

OWEN-PUTNAM STATE FOREST

DNR

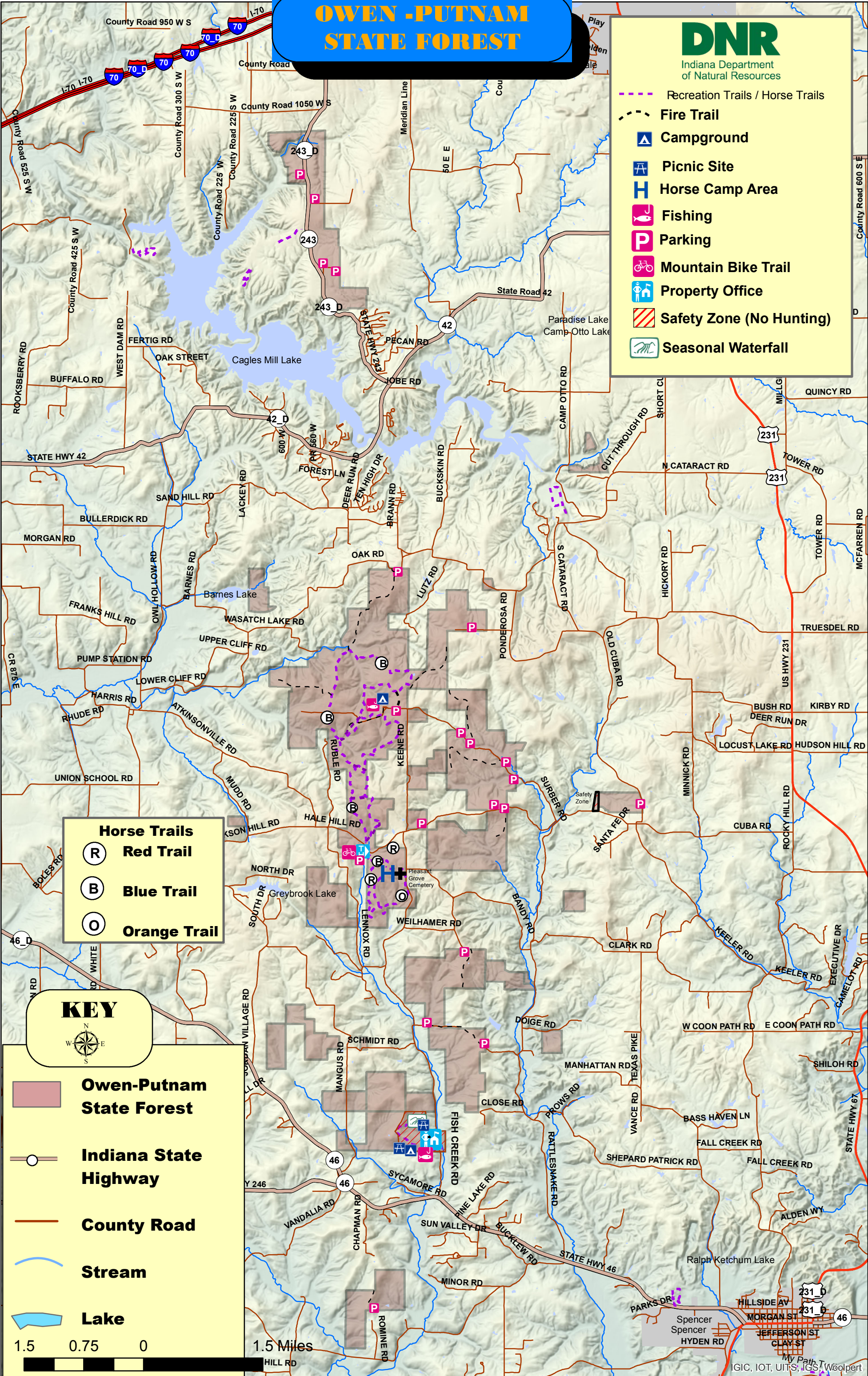
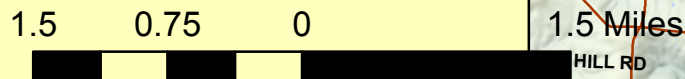
Indiana Department of Natural Resources

- - - Recreation Trails / Horse Trails
- - - Fire Trail
- ▲ Campground
- ⛺ Picnic Site
- H Horse Camp Area
- 🎣 Fishing
- P Parking
- 🚲 Mountain Bike Trail
- 🏠 Property Office
- ▨ Safety Zone (No Hunting)
- 🌿 Seasonal Waterfall

- ### Horse Trails
- R **Red Trail**
 - B **Blue Trail**
 - O **Orange Trail**

KEY

- Owen-Putnam State Forest**
- Indiana State Highway**
- County Road**
- Stream**
- Lake**



Owen-Putnam State Forest

2153 Fish Creek Rd
Spencer, IN 47460
812-829-2462 Phone
812-829-3106 Fax
Owensf@dnr.in.gov

Owen-Putnam Office Hours

Please call first to verify that we are open if you need to visit the office - 812-829-2462 Normally, we are open Monday thru Friday from 7:30 am to 3:30 pm.

Welcome to Owen-Putnam State Forest!

Owen-Putnam State Forest contains 6,680 acres of forested land and is a great place to get away. Hike through some of the best hardwood forests in the country. Enjoy deer, squirrel and turkey hunting. Fish in one of the many small ponds. Horseback ride through some of the beautiful hills of south central Indiana. This property consists of many scattered holdings in a north-south orientation and because of this scattered nature of landholding, care should be exercised to avoid trespassing on private land.

Campgrounds

We have three campgrounds. Each of these operates on a "first-come, first serve" basis, with a self-registration booth located in each campground. All campgrounds are primitive, with a picnic table; grill and parking spur at each campsite. There is water available at Fish Creek Campground during the warmer months. However, at the Horse Camp and Rattlesnake Campground there is no drinking water available. You can access water from our office, via an outside water spigot or at Fish Creek Campground. Rates for Fish Creek Campground and Rattlesnake Campground are \$13.00 a night, including tax, and the Horse Camp is \$13.00 a night, including tax. If you are interested in riding horses on state property you must obtain an annual bridal tag to ride. You may purchase the tags at our office during normal business hours, Monday- Friday from 7:30am to 3:30 pm. The annual tags are \$20.00 each and the Daily tags are \$5.00 each. These tags are required from January 1st through December 31st.

Horse Trails

Owen-Putnam State Forest offers three horse trails consisting of several miles of scenic beauty. If you are interested in riding horses on state property you must obtain an annual bridal tag to ride. You may purchase the tags at our office during normal business hours, Monday- Friday from 7:30am to 3:30 pm. The annual tags are \$20.00 each and the Daily tags are \$5.00 each. These tags are required from January 1st through December 31st.

- Pleasant Grove (Orange trail) – 1.8 miles – Highlights include the horse campground and an old cemetery
- Sandstone Bluff (Red trail) – 1.7 miles – See a 50 foot sandstone bluff, waterfall and the horse campground.
- Bridle Loop (Blue trail)-12 miles –begin this scenic route from the horse campground and ride to the rattlesnake campground area and back.

Hiking Trails

Hiking is available on the forest fire lane trails and the bridle trails throughout the forest property.

Owen-Putnam's self-guided Poplar Top trail is 1.75 miles long

Mountain Bike Trail

The bike trail is part of the Blue Horse Trail and lies north of Atkinsonville Rd. We believe most riders will find the approximately 12-mile-long ride moderately difficult.

A cycling permit is required to use the trail. We want you to have a great time. For the enjoyment of all our visitors, please keep a few things in mind.

- Mountain bikes are only permitted on the marked areas of the Blue Horse Trail.
- Bikers share the trail with horseback riders. Right-of way should be yielded to people on horseback.
- The trail is marked with blue decals, a horse and a bicycle, on Carsonite brand posts. The markers are located on the right side of the trail until you pass the halfway point on the loop. At that point, the markers will be on the left side.

To get to the trailhead parking lot (4-6 car capacity), travel north on Fish Creek Rd. until you reach the intersection of Atkinsonville Rd. – Hale Hill Rd., which is approximately 5 miles north of State Road 46. Turn left (west) and travel approximately 3/4 mile to the trailhead parking lot located on the right (north) side of Atkinsonville Rd. Please do not block the fire lane entrance, which is normally marked by a steel cable stretched across it.

Hunter Access

Hunting is allowed on the state forest property during legal hunting seasons. A valid hunting license is required. There are safety zones of 400 feet around our office, and all of the campgrounds. Restrictions also may apply to certain areas during timber harvests.

Please respect the rights of private landowners. Know where you are! Not all state forest boundaries are marked. Lines that are marked have orange paint on the state side of the trees. Boundary signs are posted at intervals on the private side.

Many of our fire trails are cleared annually to provide access to the property. These trails are usually located by parking areas and have steel cables across them with DNR padlocks. Please refrain from parking in front of these cables and blocking emergency access.

Indiana's hunting and trapping dates are available at the Forest Office and the current Indiana Hunting & Trapping Guide.

Deer and Turkey Check Stations

On-line <https://secure.in.gov/apps/dnr/gamecheck/login.html>
Parker's Archery 812-829-1144
(7 miles E on Hwy 46)

Emergency 911

Indiana Conservation Officers	812-837-9536
Indiana State Police	812-429-6209
Owen County Sheriff	812-829-5036
Spencer Fire/Ambulance	812-829-4874
Daniel's Wrecker Service	812-829-2764

Health Care

Bloomington Hospital
601 W. 2nd St. Bloomington 800-222-9589
Prompt Care
3443 W. 3rd St. Bloomington 812-332-3443

Rules Governing Use

Public lands are managed for long-term use of our citizens. To protect these lands and assure their ability to provide multiple benefits forever, certain activities are prohibited: off-road vehicles, carelessness with fires, destruction of private or public property, unauthorized vegetation or fauna destruction, and unauthorized trail making are not permitted. Hunting and shooting is prohibited within 400 feet of recreation areas or across any roadway or trail.

Please take care of your public lands and enjoy them.