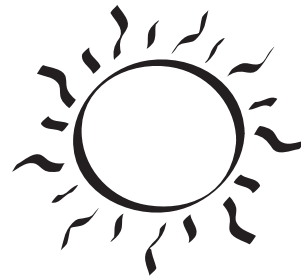
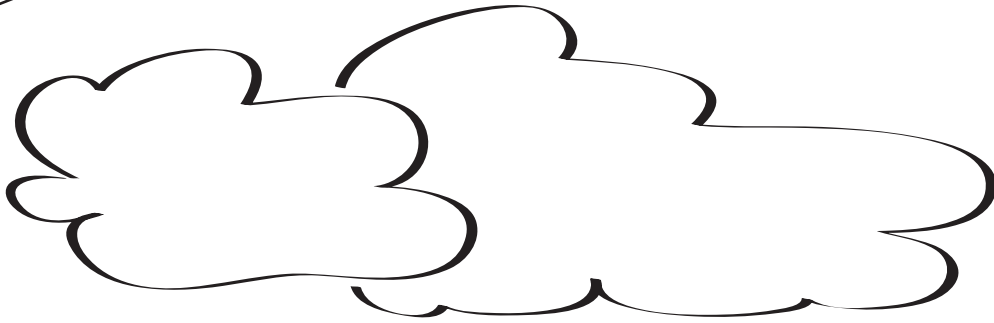
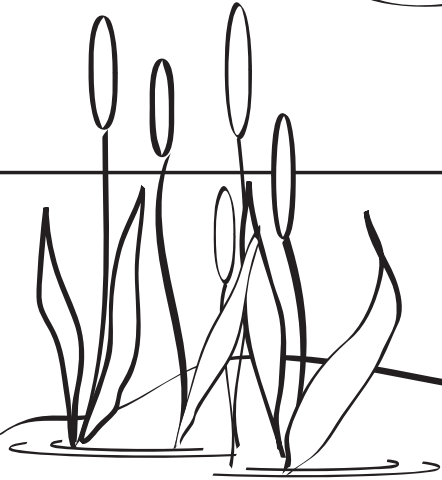


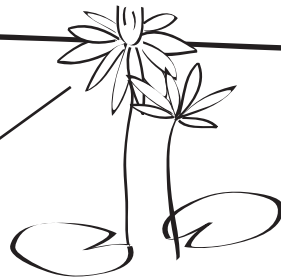
Dragonfly



Cattail



Water Lily



Arrowhead



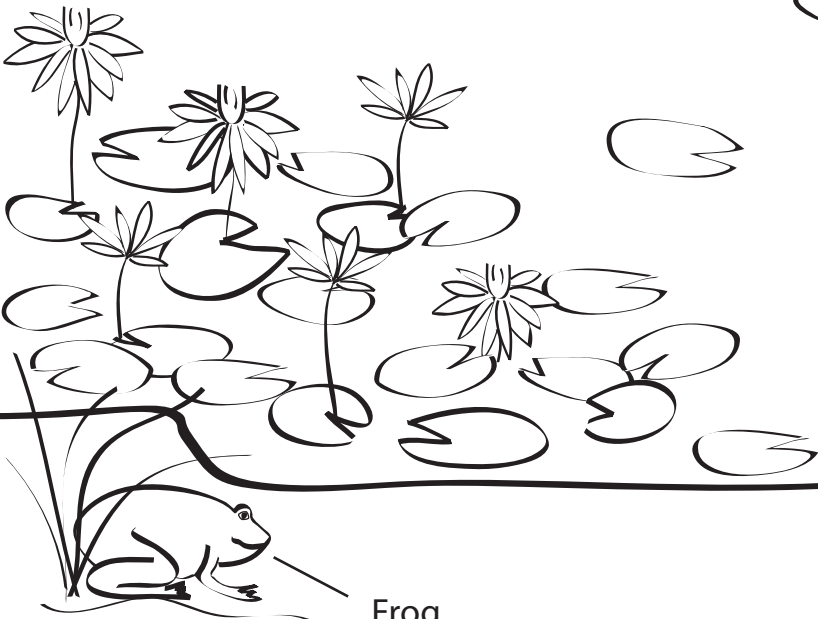
Sedges



Turtle



Frog



Basic features in a wetland

Dragonfly – Dragonflies have slender bodies with delicate, lacy wings. They fly along the shores of lakes and streams and are common to wetlands. They prefer to hunt for insects during the sunniest part of the day.

Water Lily – Water lilies have leaves that float on top of the water. They have tall flowers, which can be various colors and have many petals.

Cattail – Cattails have long, wide leaves and are adorned by a cylindrical head of tiny, soft, brown flowers.

Arrowhead – Arrowheads are plants that have arrow-shaped leaves and ducks are very fond of eating them.

Frog – Frogs have long back legs adapted for leaping, smooth moist skin and webbed feet. They live in and around water and like to munch on insects.

Turtle – Turtles have webbed claws, long necks, and a protective shell. He can withdraw his head and legs into his shell when he is frightened. Turtles found in wetlands like to live in mud. Turtles like to eat many things including fish, frogs and insects

Sedges – Sedges look like grass and have sharp edges and solid stems. They grow in wetlands along the banks.