

INDIANA LAKE MICHIGAN COASTAL PROGRAM



PROJECT LEAD

City of Hobart

YEAR

2013

COUNTY

Lake

PROJECT COST

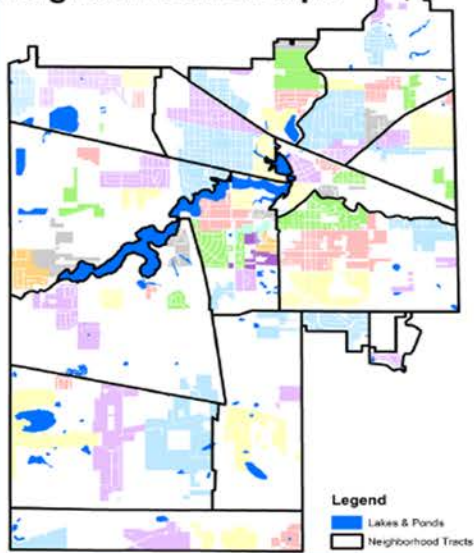
\$8,200

(\$4,100 Lake Michigan Coastal
Program Grant/\$4,100 Local Match)



Hobart Sustainable Neighborhoods Environmental/Ecological Sub Plan

Neighborhood Groups



The Hobart Sustainable Neighborhoods Plan ("the Plan") was created to advance environmental aspects of sustainability in the City of Hobart. The Plan identifies and benchmarks each residential area within the City, pinpointing areas of success and areas of improvement at a neighborhood scale. The Plan provides detailed maps for each benchmark measure for each neighborhood. The Plan is a valuable resource for City officials and can guide many different types of decision-making.

This type of plan is easily replicable. To complete this plan, the City of Hobart applied for and received a Lake Michigan Coastal Program small grant and worked with a graduate planning student from Ball State University for a six-month period. The Plan explains in detail how geospatial analyses were used to determine neighborhood tracts and groups and how problem areas and solutions were identified.

The Plan provides benchmarks and solutions for the following targets: environmental hazards; sanitary sewer lines, facilities, and water wells; stormwater lines and facilities; impervious surfaces; land cover and open space; managed lands, parks, trails, and recreational facilities; waterways and impaired waterways; and tree canopy.

For More Information:

Lake Michigan Coastal Program

1600 N 25 E

Chesterton, IN 46304

(219)926-9757

www.in.gov/dnr/lakemich

