

# Technical Assistance Planning Program Toolkit



Prepared by  
Indiana Department of Natural Resources  
Lake Michigan Coastal Program  
Dunes State Park Annex  
1600 North 25 East  
Chesterton, IN 46304

Fall 2019



# Table of Contents

---

## **Foreword and Introduction**

### **Section 1: Regional Smart Growth Resources**

*Creating Livable Communities*  
*Essential Smart Growth Fixes for Urban and Suburban Zoning Codes*  
*Smart Growth and Protection of Natural Resources in Indiana*  
*Smart Growth for Coastal and Waterfront Communities*  
*Smart Growth Guidelines for Sustainable Design and Development*

### **Section 2: Sustainable Communities Resources**

*Sustainable Development Model*  
*Community Capital Framework*  
*Indiana Citizen Planner's Guide*  
*County Multi-Hazard Mitigation Plans*  
*One Region Indicators Report: Quality of Place in Northwest Indiana*  
*Public Access Needs Assessment*  
*Enhancing the Value of Public Spaces*  
*A Self-Assessment to Address Climate Change Readiness in Your Community*

### **Section 3: Land Use Plans**

*2050 Comprehensive Regional Plan*  
*Indiana Coastal & Estuarine Land Conservation Program (CELCP) Plan*  
*The Marquette Plan 2015: The Lakeshore Reinvestment Strategy*  
*Lake County Parks and Recreation Master Plan: 2014-2018*  
*Porter County Parks and Recreation Comprehensive Master Plan: 2017-2022*  
*LaPorte County Parks and Recreation Master Plan: 2016-2020*

### **Section 4: Transportation Plans**

*Porter County US-12/US-20 Transportation Corridor Plan*  
*Northwest Indiana Regional Pedestrian and Bicycle Transportation Plan*  
*Greenways & Blueways 2020 Regional Plan*  
*Livable Broadway Regional Plan*

### **Section 5: Environmental Plans**

*Indiana Coastal Nonpoint Pollution Control Program*  
*Indiana State Wildlife Action Plan (SWAP)*  
*Tools, Strategies, and Lessons Learned from EPA Green Infrastructure Technical Assistance Projects*  
*Implementing Stormwater Infiltration Practices at Vacant Parcels and Brownfield Sites*  
*Valuation of Ecosystem Services for Lake, Porter, and LaPorte Counties, Indiana*  
*Northwest Indiana Watershed Management Framework*  
*Indiana Clean Marina Program Guidebook*  
*Tipping Points & Indicators: Supporting Sustainable Communities in Great Lakes States*

### **Section 6: Economic Development Plans**

*Regional Cities Initiative: Indiana's Third Coast Gateway Initiative*  
*Framework for Creating a Smart Growth Economic Development Strategy: A Tool for Small Cities and Towns*

### **Section 7: Historic Preservation Plans**

*LaPorte County: Interim Report*  
*Porter County: Interim Report*  
*Lake County: Interim Report*  
*Coastal Historical and Cultural Resources Study of the Lake Michigan Watershed*  
*Lake Michigan Coastal Cultural and Historic Resources: Public Access Inventory and Condition Assessment*

# Foreword

---

Funding for this publication was provided by the National Oceanic and Atmospheric Administration and the Indiana Department of Natural Resources.

## LAKE MICHIGAN COASTAL PROGRAM STAFF

### Chesterton, Indiana

Jenny Orsburn, Program Manager

Sarah Nimetz, Grants Specialist

Grace Roman, Grants Assistant

Kathryn Vallis, Coastal Resources Planner

Derek Nimetz, Regional Ecologist

Bri Ciara, Special Projects Coordinator

### Indianapolis, Indiana

Kacey Alexander, Operations Specialist

# LAKE MICHIGAN COASTAL PROGRAM BOUNDARY

## Lake County

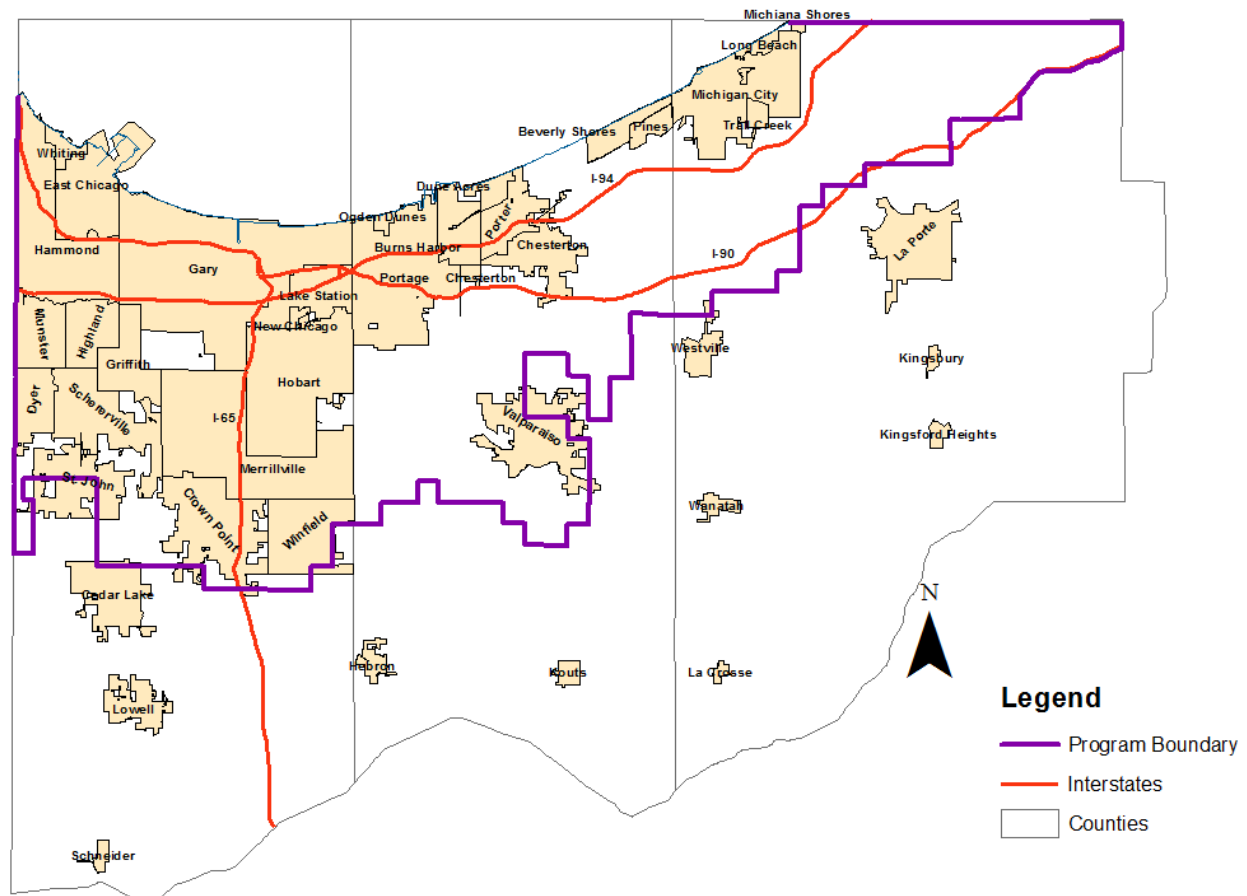
- Whiting
- East Chicago
- Hammond
- Munster
- Highland
- Griffith
- Dyer
- Schererville
- Gary
- Merrillville
- Crown Point
- Lake Station
- New Chicago
- Hobart
- Winfield

## Porter County

- Ogden Dunes
- Dune Acres
- Porter
- Burns Harbor
- Portage
- Beverly Shores
- Chesterton
- Pines
- Valparaiso

## LaPorte County

- Michigan City
- Trail Creek
- Michiana Shores
- Long Beach



# Introduction

---

The Indiana Department of Natural Resources Lake Michigan Coastal Program (LMCP) supports coordination and partnerships among local, state, and federal agencies and local organizations for the protection and sustainable use of natural, historic, and cultural resources in the Lake Michigan region. The LMCP's Technical Assistance Planning Program (TAPP) connects coastal decision-makers with resources to support sustainable development and natural resource planning. Through the TAPP, LMCP works with communities and organizations located within the state's portion of the Lake Michigan basin on comprehensive plan updates, sub-area planning, local ordinance development, and other policy and coordination initiatives.

## LAKE MICHIGAN COASTAL GRANTS PROGRAM

The Indiana Department of Natural Resources Lake Michigan Coastal Program receives an annual allotment of funding from the National Oceanic and Atmospheric Administration (NOAA) to administer a grants program to carry out projects which protect and restore natural, cultural, and historic resources in Indiana's Lake Michigan coastal region. The Lake Michigan Coastal Grants Program is an annual competitive grants program that awards funds to units of local government, regional and state agencies, colleges and universities, and non-profit organizations. The program's funds may be expended on six different categories of projects: public access or habitat improvements, land acquisition, planning and coordination, education and outreach, applied research, and emerging issues.

## HOW TO USE THIS RESOURCE

The TAPP Toolkit was created to help grant-eligible entities identify potential projects and partnership opportunities. The TAPP Toolkit provides summaries of conceptual planning resources and tools and state and regional plans. A summary has been prepared for each resource within the TAPP Toolkit. Readers can quickly locate the plans and resources in which they are interested and navigate to more detailed information by using the links provided in each plan or resource summary. Resources within the TAPP Toolkit are grouped into one of seven categories: Regional Smart Growth, Sustainable Communities, Land Use Plans, Transportation Plans, Environmental Plans, Economic Development, and Historic Preservation. Case studies that highlight some interesting and replicable municipal plans are included in the final section.