

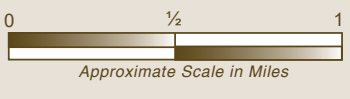
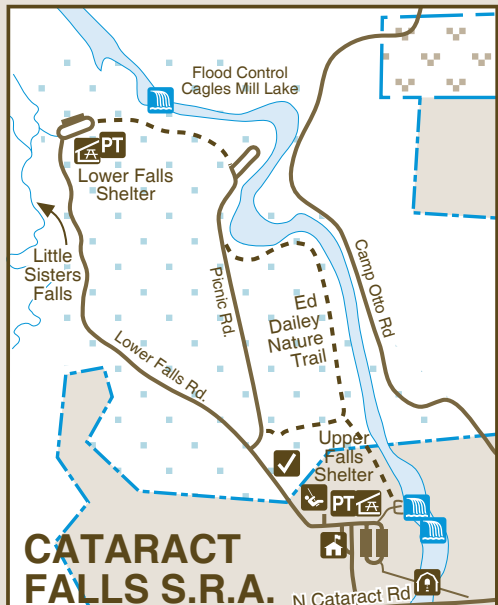
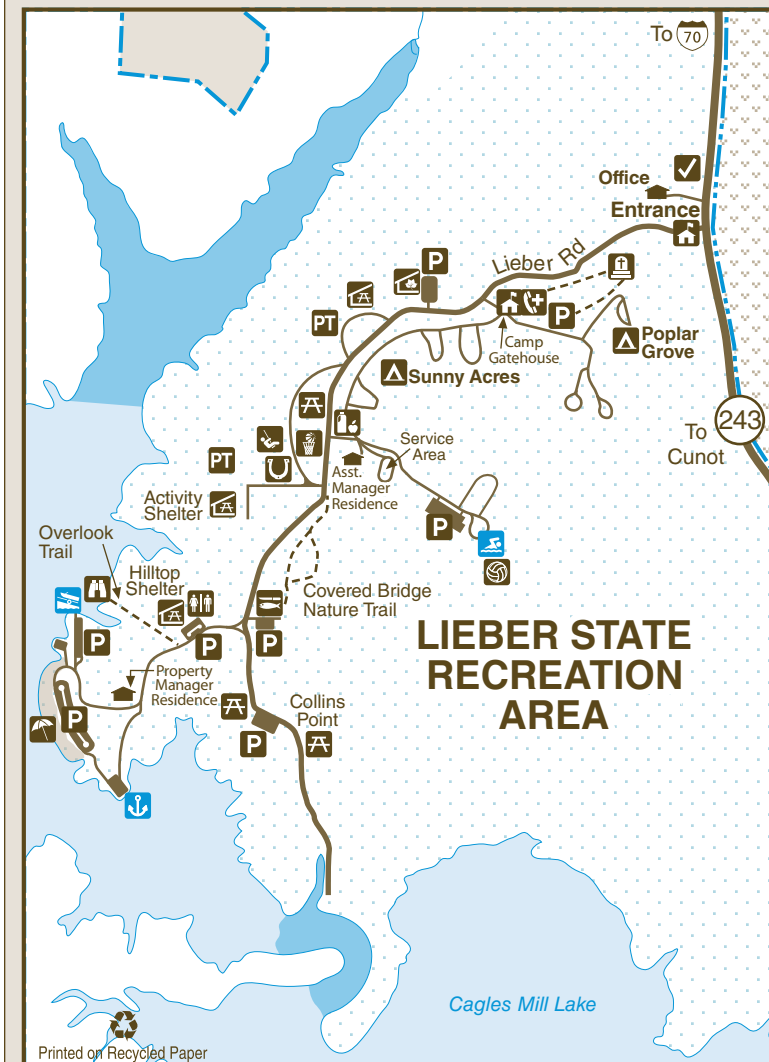
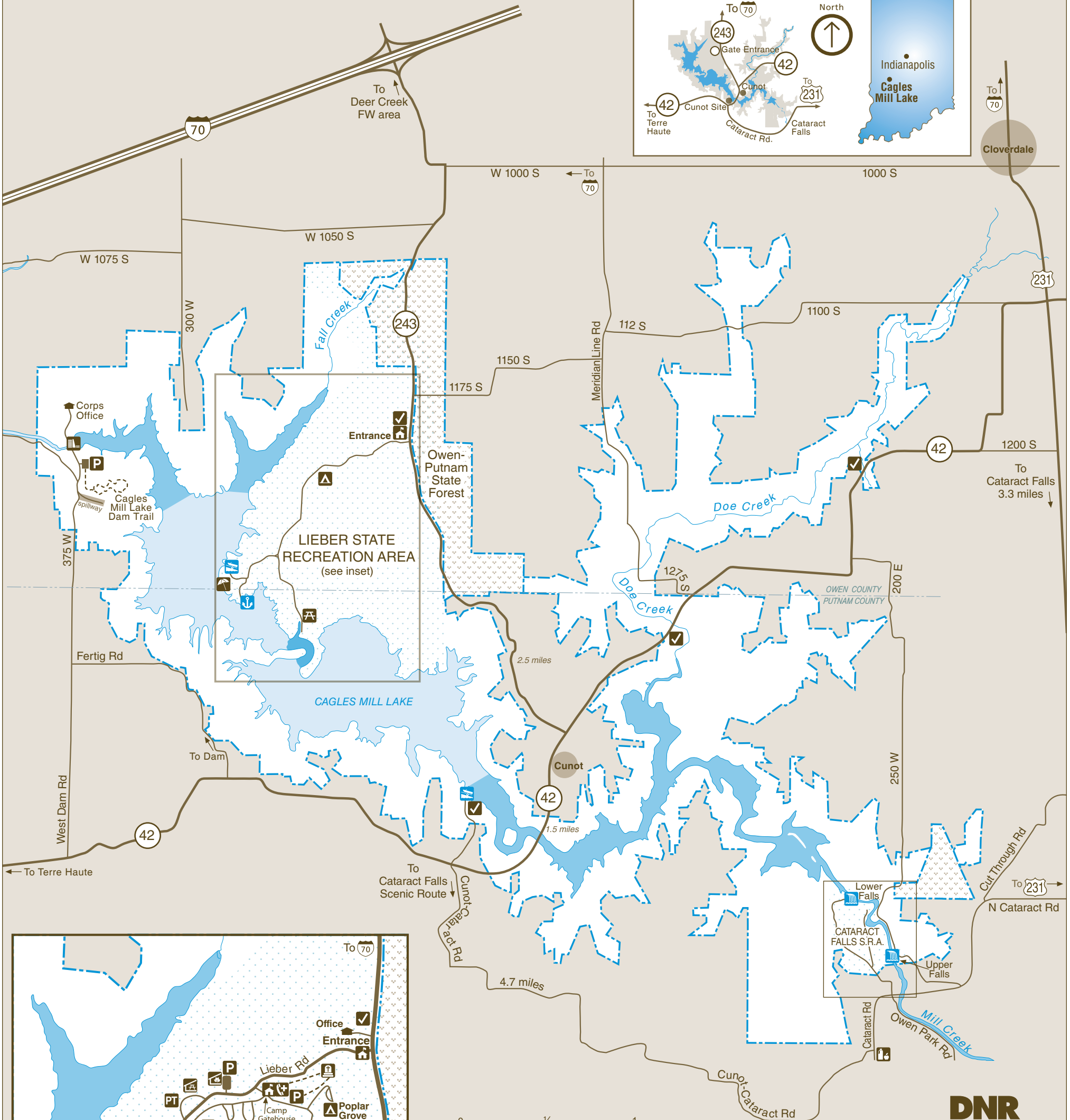
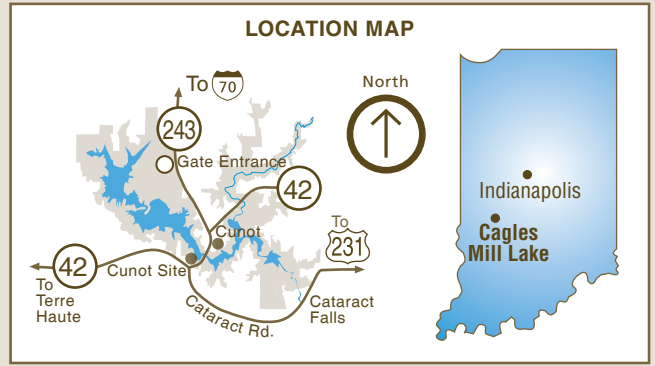
CAGLES MILL LAKE LIEBER STATE RECREATION AREA and CATARACT FALLS STATE RECREATION AREA

Cagles Mill Lake

1317 W. Lieber Rd., Suite 1 • Cloverdale, IN 46120 • (765) 795-4576
8,075 Acres - 1,400 acre lake Established 1953

Cataract Falls State Recreation Area

2605 N. Cataract Rd. • Spencer, IN 47460



DNR
Indiana Department of Natural Resources

LEGEND			
	Boundary		Gatehouse
	Road		Campground
	Hiking Trail		Playground
	State Rec. Area		Camp Store
	Water		Parking Lot
	Idle Zone		Picnic Shelter
	Forest		Picnic Area
	Dam/Spillway		Nature Center
	Aquatic Center		Pit Toilet
	Boat Launch		Covered Bridge
	Marina		Beach
	Waterfall		Wildlife Watching
	Restroom		Fish Cleaning Stn.
	Hunter Check-in		Horseshoe Pit
	Emergency Call Box		Volleyball Pit
	Cemetery		Basketball Court

RECYCLE
Place used beverage cans in the park's marked recycling containers. Thank you.

CARRY IN CARRY OUT
Please carry out all trash you produce in order to keep your park clean and beautiful for others to enjoy.

For a list of park events, visit Interpretiveservices.IN.gov

can relive the old days. Visitors to the site of the old Jennings Mill in Cataract are still active and important for transport of area products (local economy. The railroad lines (under different names) forest industries, and limestone quarries contribute to the pride in their resourceful heritage. Livestock and grain farms, industries provide a livelihood for area residents who take Today, more than a century later, many of the same development of the Cagles Mill Lake area.

B&O railroads played an integral part in the diversified of goods and raw materials. The Vandallia, Monon and and increasing business, while easing the transportation the railroad encouraged growth by providing employment Reelville. The National Trail (U.S. 40) and the onset of other mineral deposits near Cloverdale, Putnamville and discovery of limestone rock beds, gravel deposits, and Development of the region progressed rapidly with the low-level dam is still in place.

Cagles Mill was destroyed and rebuilt several times of an old grist mill that was downstream from the lake. Cataract and Cunt. Cagles Mill Lake bears the name and sawmills, which gave rise to the local communities plentiful water supply spurred development of grist mills hardwood forests and farmed the river bottoms. The resources of the area ensued. They cleared the dense A great migration of pioneers eager to claim the valuable Cagles Mill Lake area opened for settlement.

treaty and, subsequently, the Treaty of 1818, land in the Area and Lower Cataract Falls. With the signing of that line crossed what is now the Lieber State Recreation established by the shadow of a tree at ten o'clock. This pioneers claim to the land south and west of a line The "Ten O'clock Line" Treaty, signed in 1809, gave their land claims in the Indiana Territory.

AREA HISTORY & POINTS OF INTEREST



Cagles Mill Lake lies in Putnam and Owen counties in south-central Indiana—approximately midway between Indianapolis and Terre Haute.

Cagles Mill Lake was designed and built by the Louisville District of the U.S. Army Corps of Engineers and is operated primarily for flood control in the Eel and White river watersheds, forming an integral unit of the comprehensive flood-control plan for the Ohio and Mississippi rivers.

Cagles Mill Lake was the first flood-control lake project in the Louisville District selected for construction under the authority of the Flood Control Act of 1938. Construction began in July 1948 and was completed in June 1953. The lake also is known locally as Cataract Lake.

The recreation facilities at the lake are maintained and operated by the State of Indiana, Department of Natural Resources, with the exception of the dam site, which the Corps maintains and operates.

PLEASE STAY ON MARKED TRAILS.

TRAIL & DESCRIPTION	DISTANCE	DIFFICULTY
Covered Bridge Nature Trail	.75 miles	Moderate
Overlook Trail	.5 miles	Easy
Ed Dailey	.5 miles	Moderate

DESCRIPTION OF HIKING TRAILS

For a complete list of rules and regulations, inquire at property office.

- Use of metal detectors is prohibited.
- Feeding of wildlife is prohibited.
- Report lost or found articles to the property office.
- water is tested regularly for purity.
- Drinking water should be taken only from pumps, hydrants or fountains provided for that purpose. This beverage at a swimming beach and pool.
- No person shall possess or consume an alcoholic beverage at a swimming beach and pool.
- Motorists shall observe posted speed limits and park only in designated areas. (25 mph maximum).
- in receptacles provided for that purpose.
- Please comply with the Carry In/Carry Out trash policy in all day-use areas. Overnight guests must put waste in receptacles provided for that purpose.
- Fires shall be built only in designated places.
- Groups must be under adult supervision.
- Camping is permitted only in the campground. Youth is prohibited.
- Vending or advertising without permission of the DNR is prohibited.
- A person who possesses a pet must attend it at all times and keep the animal caged or on a leash no more than 6 feet long.
- The person in the field for a specified date.
- obtained from a hunter sign-in station and possessed by the terms of a one-day hunting permit and record card case or locked within a vehicle except in accordance with the terms of a one-day hunting permit and record card.
- Any firearm, BB gun, air gun, CO₂ gun, bow and arrow or paint gun must be unloaded or un-nocked and stored in a case or locked within a vehicle except in accordance with the terms of a one-day hunting permit and record card.
- No person shall launch, dock, or moor a watercraft or other floating device, except during approved periods and at sites designated by the department for those purposes. No person shall leave watercraft unattended in a courtesy dock.
- Any firearm, BB gun, air gun, CO₂ gun, bow and arrow or paint gun must be unloaded or un-nocked and stored in a case or locked within a vehicle except in accordance with the terms of a one-day hunting permit and record card.
- No person shall conduct or participate in a fishing tournament on a reservoir property administered by the Division of State Parks and Reservoirs, except under a license.

RULES AND REGULATIONS

CENTRAL RESERVATION SYSTEM



Reservations for all types of camping, family cabins, and shelters at state parks, reservoirs and forests can be made online or by calling toll-free.

Call: **1-866-6campIN** (1-866-622-6746)
Online: **camp.IN.gov**

Reservations for the Indiana State Park Inns and Inn-operated cabins can be made online or by phone.

Call: **1-877-lodges1** (1-877-563-4371)
Online: **IndianalInns.com**

FOR MORE INFORMATION



Write: Cagles Mill Lake
1317 W. Lieber Rd, Suite 1
Cloverdale, IN 46120

Call: 765-795-4576
Online: on.IN.gov/liebersra

US Army Corps of Engineers

Cagles Mill Lake, Dam/Tailwater
11979 S. Co. Rd 375 W.
Poland, IN 47868
Call: 765-795-4439

SPECIAL NOTE

Receipts from admission and service charges are used to help defray the operation and maintenance costs of the lake. List of fees available in the lake office.

THIS IS YOUR LAKE

Visitors shall observe the rules, which are designed to fulfill the purposes for which the state operates reservoir properties, namely, to manage these areas for the enhancement of wildlife and for the use and enjoyment of the public.



Please carry out all trash you produce in order to keep your park clean and beautiful for others to enjoy!

[@INdnrstateparksandreservoirs](https://www.facebook.com/INdnrstateparksandreservoirs) [@indianadnr](https://www.instagram.com/indianadnr) [@INDNRstateparks](https://twitter.com/INDNRstateparks)

See everything Indiana State Parks has to offer at stateparks.IN.gov.

OUTDOOR INDIANA Subscribe to Outdoor Indiana magazine today, Visit OutdoorIndiana.org or call **317-233-3046**.

The programs, services, facilities, and activities of the Indiana Department of Natural Resources are available to everyone. DNR prohibits discrimination on the basis of race, color, national origin, age, sex, or disability. If you believe that you have been discriminated against in any program, activity, or facility as described above, or if you desire further information please write to: Department of Natural Resources, Executive Office, 402 W. Washington Street, W256, Indianapolis, IN 46204, (317) 232-4020.

Pick up an Indiana Recreation Guide for more information.

- **Chinook Fish and Wildlife Area**—Fishing, boating, boat ramp, trapping, wildlife watching
- **Deer Creek Fish and Wildlife Area**—Fishing, hunting, trapping, wildlife watching
- **McCormick's Creek State Park**—Camping, hiking trails, saddle barn, play/sports fields, swimming, camping, Interpretive Services, Interpretive Center, picnicking, INN, cabins

DNR PROPERTIES NEARBY

Historic American Engineering Record (HAER) in 2004. Historic Places in April 2005, and documented by the The bridge was entered in the National Register of Transportation (INDOT). Rehabilitation cost approximately \$520,000. The DNR's share was approximately \$110,000. Administration through the Indiana Department of Administration and operated by the Federal Highway through Indiana. Both programs are funded by acts of Congress, and operated by the Federal Highway instrumental in preserving numerous bridges, depots, and one-of-a-kind transportation-related historic structures. The program has been designed to strengthen the cultural, aesthetic, and environmental aspects of the TEA-21 funds activities "designed to strengthen the National Register-eligible and listed covered bridges. to assist efforts to preserve, rehabilitate, or restore Century (TEA-21) grants. NHCBP provides funding Program and Transportation Equity Act for the 21st National Historic Covered Bridge Preservation (NHCBP) The preservation work was partially funded with surviving example of a Smith truss.

with iron bridge construction. This bridge may be the best 19th century Industrial Age that are more likely associated Cataract show many features characteristic of the late of pre-industrial times. Instead, bridges like the one at Smith trusses were produced in a manner at odds with the romantic conception of covered bridges as a product and delivered the pieces to be assembled on location. Smith trusses and uniform dimensions. have smooth, planned surfaces and uniform dimensions. This allowed the Cataract Bridges white pine timbers to be assembled on location. And delivered the pieces to be assembled on location. bridges in the controlled environment of his Toledo shops instead of constructing his bridge on site. Smith built pointing in as they go up were in compression.

center as they go up were in tension, and the members crossing timbers. The members pointing away from the Arch trusses, Smith's design was a simple lattice-work of While the majority of Indiana's covered bridges have Burr Smith and built by his company or under license to him. in Indiana. This construction was patented by Robert W. in Owen County. It is also one of only six Smith trusses

Cataract Falls Bridge is the only surviving covered bridge

CATARACT FALLS COVERED BRIDGE

ACTIVITIES AND FACILITIES

AQUATIC CENTER—Located at Lieber SRA. Opens Memorial Day. Length of season may vary. For swimming availability, contact the property office.

BEACH—Swimming permitted Memorial Day through Labor Day.

BOAT RAMPS—Available at two locations, boat-launching ramps are marked on the map.

BOAT RENTAL—Fishing boats and pontoon boats are available to rent by the hour or day. For rates and reservations, visit the boat rental office at the campstore.

CAMPING—Campsites available include electric and non-electric sites. Occupancy limited to 14 consecutive nights. Reservations available through the Central Reservation System.

CONCESSION & CAMPGROUND GROCERY—Open summer months. Wood, ice, picnic supplies and groceries available.

FISHING—Bass, bluegill, catfish, crappie, hybrid strippers and walleye. State license required and available at property office.

HIKING—Easy to moderate marked Wildflower and Nature trails are available for hiking all year.

HUNTING—All hunters are required by law to sign in and return a hunting permit card to a hunter sign-in station. Hunting in resting areas is allowed by permit only. Areas available for disabled hunters.

INTERPRETIVE & RECREATIONAL PROGRAMS—Explore the world of natural resources while enjoying seasonal interpretive and recreational programs at the Nature Center. Program schedules are available at InterpretiveServices.IN.gov or call (765) 795-3552.

MARINA—Located at Lieber SRA, provides concessions, seasonal mooring, fuel, boat rental and fishing supplies.

PICNIC AREAS—Tables, grills, toilet facilities, playground equipment and playfields. Accessible picnic sites available.

SHELTERS—Reservations for shelters available through the Central Reservation System.

Please let wild animals remain wild.

Feeding deer is prohibited. Feeding of wild animals can result in harm to both animals and people. Animals who depend on handouts become a nuisance to visitors and a danger to themselves. Please lock up all food and coolers inside cars or campers. Roll up car windows tightly.