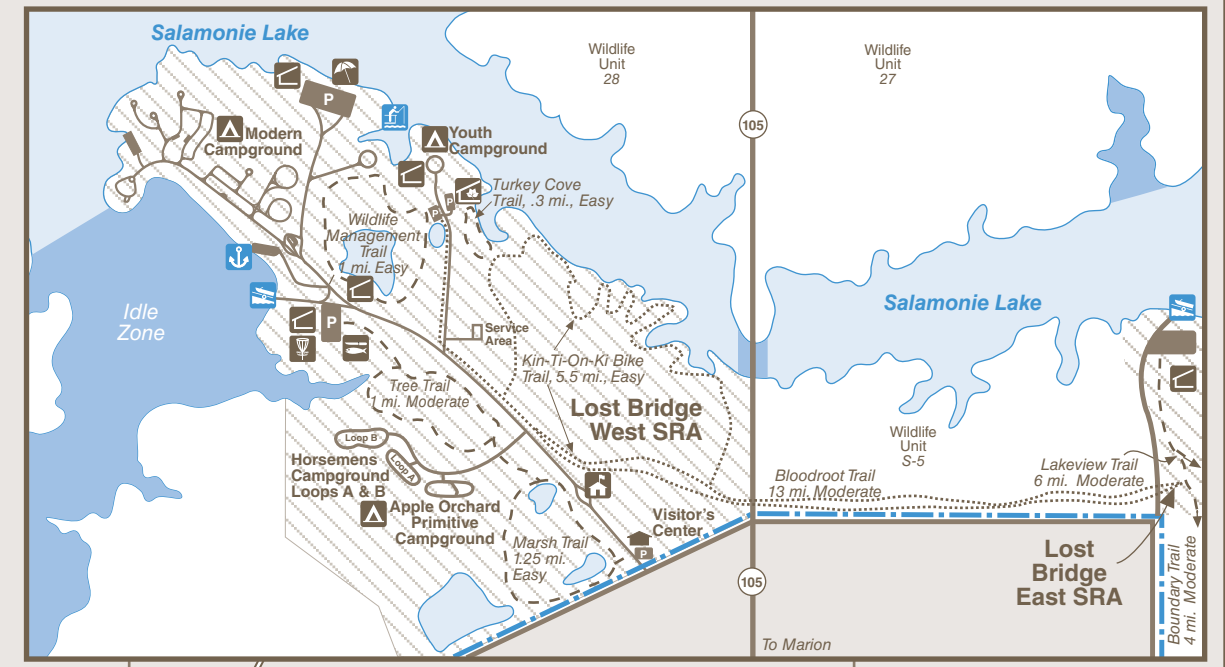
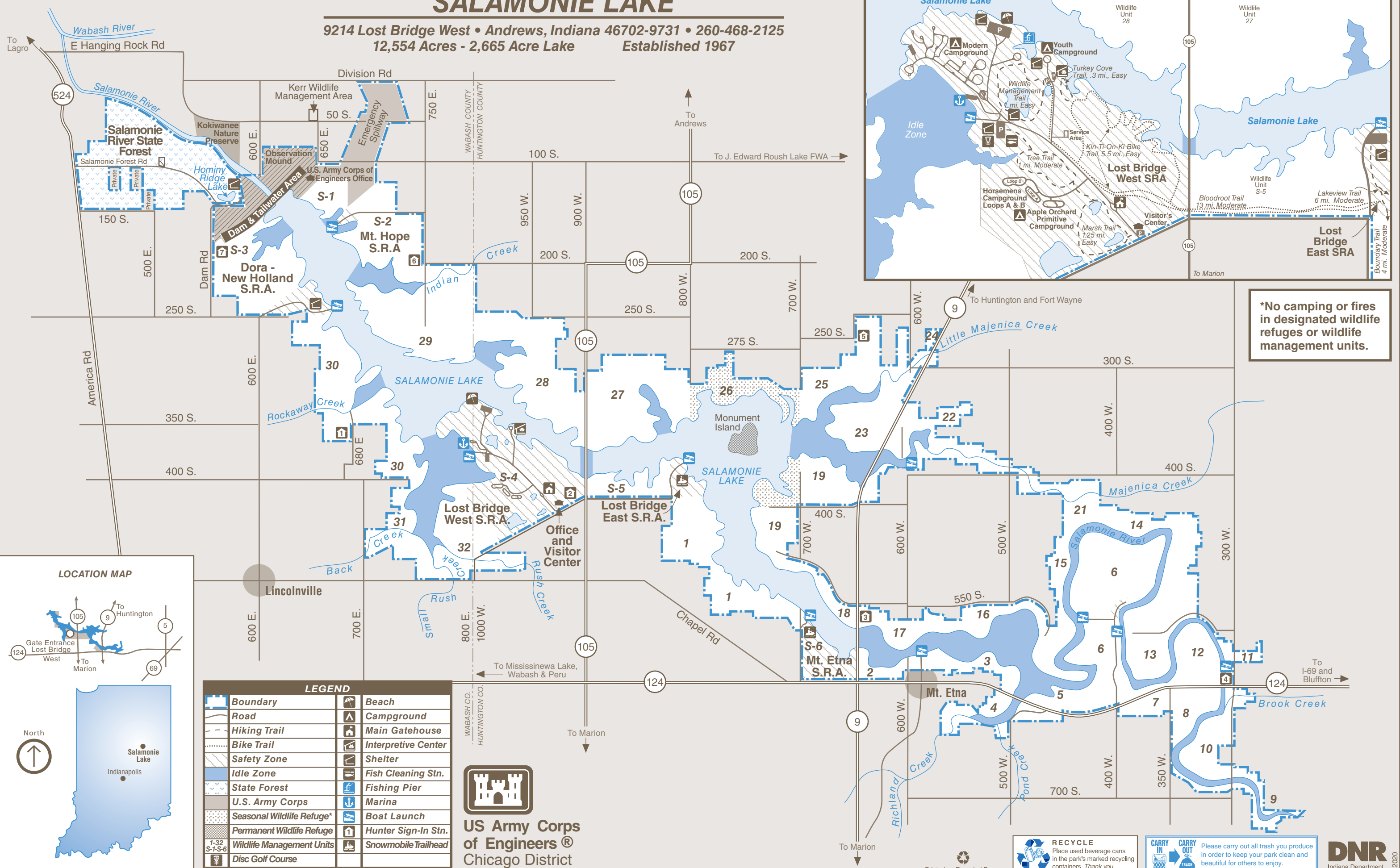
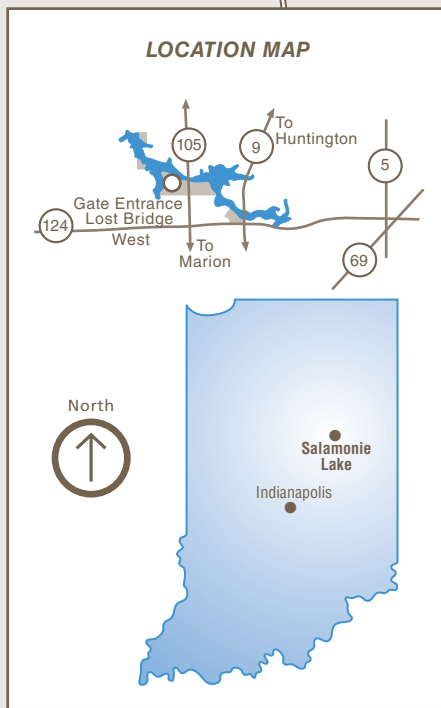


# SALAMONIE LAKE

9214 Lost Bridge West • Andrews, Indiana 46702-9731 • 260-468-2125  
12,554 Acres - 2,665 Acre Lake  
Established 1967



**\*No camping or fires in designated wildlife refuges or wildlife management units.**



LEGEND			
	Boundary		Beach
	Road		Campground
	Hiking Trail		Main Gatehouse
	Bike Trail		Interpretive Center
	Safety Zone		Shelter
	Idle Zone		Fish Cleaning Stn.
	State Forest		Fishing Pier
	U.S. Army Corps		Marina
	Seasonal Wildlife Refuge*		Boat Launch
	Permanent Wildlife Refuge		Hunter Sign-In Stn.
	Wildlife Management Units		Snowmobile Trailhead
	Disc Golf Course		

**US Army Corps of Engineers®**  
Chicago District

**RECYCLE**  
Place used beverage cans in the park's marked recycling containers. Thank you.

**CARRY IN CARRY OUT**  
Please carry out all trash you produce in order to keep your park clean and beautiful for others to enjoy.

**DNR**  
Indiana Department of Natural Resources

Printed on Recycled Paper

6/2020

WINTER POOL	SUMMER POOL	FLOOD POOL
11	17	30
868	2,665	9,340
730	755	793
(feet mean sea level)	(feet mean sea level)	(feet mean sea level)
ELEVATION	AREA	LENGTH
(acres)	(miles)	

## OPERATING LEVELS

Drainage area above dam: 553 square miles  
 Length: 6,100 feet  
 Maximum height: 133 feet  
 Type: Earth fill

## DAM INFORMATION

Trails provide enjoyment throughout the year. If you seek adventure and challenge, or recreation and relaxation, one of our trails is for you. All trails are signed and groomed according to their suggested use. Trails wind in and out of woods and clearings, following pond perimeters and the reservoir boundary. Please observe and abide by trail directional signs. Hikers, horsemen, mushroom hunters, and other patrons are urged to wear hunter orange during hunting seasons.

## TRAILS NOTE

## PLEASE STAY ON MARKED TRAILS

TRAIL & DESCRIPTION	DISTANCE	DIFFICULTY
<b>Kin-Ti-On-Ki Bike Trail</b>	5.5 miles	Easy
<b>Snowmobile Trail</b>	40 miles	Trail to be followed in one direction only
<b>Bridle Trail</b>	12 miles	
<b>Cross-Country Ski Trail</b>	Varies	Easy to Moderate

## DESCRIPTION OF RECREATION TRAILS

TRAIL & DESCRIPTION	DISTANCE	DIFFICULTY
<b>Wildlife Management Trail</b>	1 mile	Easy
<b>Turkey Cove Trail</b>	.4 miles	Easy
<b>Marsh Trail</b>	1.5 miles	Easy
<b>Bloodroot Trail</b>	13 miles	Moderate
<b>Tree Trail</b>	1.25 miles	Moderate

## DESCRIPTION OF HIKING TRAILS

## ACTIVITIES AND FACILITIES

**BEACH**—Located in Lost Bridge West, it is the only designated swimming area on the property.

- Open Memorial Day through Labor Day
- No alcohol allowed
- Beach closed when flooded
- Restroom accommodations and concessions

**BOAT RAMPS**—Concrete ramps at five locations. All embayments are idle zones.

- Canoe launching ramp at S.R. 124 and C.R. 300W, behind check-in station on the river and Lost Bridge West Youth Tent Area 7.

**MARINA**— Located in Lost Bridge West, in an idle zone off the modern campground. A private concession that provides:

- boat rental
- fuel
- concessions
- firewood
- overnight and seasonal mooring
- tour boat

**CAMPING**—Only in designated areas. For questions regarding camping at Salamonie River State Forest, please contact the state forest office.

- Electric, Lost Bridge West
- Primitive, Lost Bridge West, Apple Orchard
- Primitive—horse camp, Lost Bridge West, must have horses
- Primitive—youth group, Lost Bridge West

**FISHING**—Plenty of fishing in lake, river and ponds.

- bluegill
  - crappie
  - catfish
  - redear
  - walleye
  - bass
- HUNTING**—All hunters are required by law to carry and return a hunting permit card to one of seven hunter sign-in stations. Refer to sign-in station for property specific regulations. Salamonie has a permanent and seasonal refuge. Game available includes: rabbit, raccoon, squirrel, deer, woodcock, waterfowl, dove, turkey, fox, rail, snipe and coyote.

**INTERPRETIVE, CULTURAL and RECREATIONAL PROGRAMS**—Interpretive center, raptor center, wildlife viewing windows and surrounding trails Schedules are at InterpretiveServices.IN.gov or call 260-468-2127.

**PICNIC AREAS**—Located throughout the property safety zones. Most provide: picnic tables, grills, shelterhouses, toilet facilities and mobility accessible picnic tables. Shelters reservable through the Central Reservation System.

**OTHER ACTIVITIES**—Available include these special attractions: beach activities, basketball and volleyball courts, horseshoe pits, disc golf, playgrounds and wildlife viewing areas, hiking, disk golf and bicycle riding trails.

**Please let wild animals remain wild.** Feeding of wild animals can result in harm to both animals and people. Animals who depend on handouts become a nuisance to visitors and a danger to themselves. Please lock up all food and coolers inside cars or campers. Roll up car windows tightly.

**THIS IS YOUR LAKE** All visitors are expected to observe the following rules which are designed to fulfill the purposes for which the state operates lake properties, namely, to manage these areas for the enhancement of wildlife and for the use and enjoyment of the people.

For a complete list of rules and regulations inquire at property office.

- A permit is required.
- Use of metal detectors is allowed only at the beach.
- Feeding of wildlife is prohibited.
- Report lost or found articles to the property office.
- Water is tested regularly for purity.
- Drinking water should be taken only from pumps, hydrants or fountains provided for that purpose. This beverage at a swimming beach.
- A person must not possess or consume an alcoholic in designated areas. 30 m.p.h. maximum.
- Motorists will observe speed limits as posted, and park in receptacles provided for that purpose.
- Please comply with the Carry In/Carry Out trash policy in all day use areas. Overnight guests must put waste in receptacles provided for that purpose.
- Fires shall be built only in places provided.
- Groups must be under adult supervision.
- Camping is permitted only in the campground. Youth permission of the Department of Natural Resources.
- There shall be no vending or advertising without at all times.
- A person who possesses a pet must keep the animal caged or on a leash no more than six feet and attended a specified date.
- Any firearm, BB gun, air gun, CO2 gun, bow and arrow or paint gun must be unloaded or un-nocked and stored in a case or locked within a vehicle except in accordance with the terms of a one-day hunting permit and record card obtained from a hunter sign-in and possessed by the person in the field for a specified date.
- A person must not launch, dock, or moor a watercraft or another floating device, except for approved periods and at sites designated by the department for those purposes. A watercraft shall not be left unattended in the division of state parks, except under a license.
- A person must not conduct or participate in a fishing tournament on a reservoir property administered by the division of state parks, except under a license.

## RULES AND REGULATIONS

## CENTRAL RESERVATION SYSTEM



Reservations for all types of camping, family cabins, and shelters at state parks, reservoirs and forests can be made online or by calling toll-free. Call: 1-866-6campIN (1-866-622-6746) Online: camp.IN.gov

Reservations for the Indiana State Park Inns and Inn-operated cabins can be made online or by phone. Call: 1-877-lodges1 (1-877-563-4371) Online: IndianalInns.com

## FOR MORE INFORMATION



Write: Salamonie Lake  
 9214 Lost Bridge West  
 Andrews, IN 46702-9731  
 Call: 260-468-2125 Ext. 2  
 Fax: 260-468-2583  
 Online: on.IN.gov/salamonielake

### Park Manager

Write: U.S. Army Corps of Engineers  
 6420 E. Salamonie Dam Road  
 Lagro, IN 46941-9717  
 Call: 260-782-2358  
 Fax: 260-782-2474  
 Online: www.lrc.usace.army.mil/Locations/Lakes/Salamonie-Lake/  
**Chicago District Headquarters**  
 Write: U.S. Army Corps of Engineers  
 231 S. LaSalle St., Suite 1500  
 Chicago, Illinois 60604  
 Call: 312-846-5330

## SPECIAL NOTE

Receipts from admission and service charges are used to help defray the operation and maintenance costs of the lake. List of fees available in the main office.



Please carry out all trash you produce in order to keep your park clean and beautiful for others to enjoy!

@INdnrstateparks andreservoirs @indianadnr @INDNRstateparks

See everything Indiana State Parks has to offer at [stateparks.IN.gov](http://stateparks.IN.gov).

**OUTDOOR INDIANA** Subscribe to Outdoor Indiana magazine today, Visit [OutdoorIndiana.org](http://OutdoorIndiana.org) or call 317-233-3046.

The programs, services, facilities, and activities of the Indiana Department of Natural Resources are available to everyone. DNR prohibits discrimination on the basis of race, color, national origin, age, sex, or disability. If you believe that you have been discriminated against in any program, activity, or facility as described above, or if you desire further information please write to: Department of Natural Resources, Executive Office, 402 W. Washington Street, W256, Indianapolis, IN 46204, (317) 232-4020.

- **Mississinewa Lake-Boating**, boat ramps, cabins, camping, fishing, fishing pier, hiking trails, hunting, seasonal interpretive service, marina, picnic area, swimming beach, youth tent areas, trapping
- **J. Edward Roush Fish and Wildlife Area-Boating**, boat ramp, fishing, hunting, camping, wildlife watching, shooting range
- **Salamonie River State Forest-Boating**, boat ramps, bridge trails, camping, fishing, hiking trails, historic features, hunting, picnic area, play/sports area, shelter house, wildlife watching, trapping

## DNR PROPERTIES NEARBY

**Huntington County Visitor & Convention Bureau**  
 1-800-848-4282 or 260-359-8687  
 info@visithuntington.org

**Wabash County Convention & Visitor Bureau**  
 1-800-563-1169 or 260-563-7171

## LODGING

Local lodging is available if you do not want to camp. The Corps of Engineers has developed a partnership in the management of the public land at Salamonie Lake. Under a lease agreement, the Indiana Department of Natural Resources operates and maintains the recreation facilities and wildlife areas at the lake, except the areas noted on the map.

## PARTNERSHIPS

As the second largest reservoir of the Upper Wabash Reservoirs, the U.S. Army Corps of Engineers regulates the water level and operates the dam for flood control. The DNR manages the multiple-use recreation and wildlife areas. This reservoir, along with Mississinewa to the west, and J. Edward Roush to the east, serves to reduce flood stages downstream. The three dams have saved millions of dollars in flood damages.

## PURPOSE

Salamonie Lake is located in Huntington and Wabash counties in northeastern Indiana on the Salamonie River. Accessible from the following routes: State Road 524 on the west, U.S. 24 on the north, Interstate 69 on the east, and S.R. 124 on the south. S.R. 9 and S.R. 105 also cross the property north/south.

## LOCATION

## DNR Indiana Department of Natural Resources



Salamonie Lake comprises a total of 12,554 acres, including the 2,665 acre reservoir. The property is operated and maintained by the Indiana Department of Natural Resources, under a lease agreement with the U.S. Army Corps of Engineers. At summer pool the water forms a 2,665-acre lake. The property also boasts 40 ponds, marshes, and wetlands. Surrounded by the rich countryside of north-central Indiana, Salamonie Lake and the surrounding area have a lot to offer those seeking information on Indiana's pioneer history. Learn about towns under water, Indiana legends and more. Explore Kokiwanee and Hanging Rock nature preserves. Roam the Salamonie River State Forest, the largest state forest in northern Indiana. Visit the historic towns of Huntington and Wabash, which are only a short drive from Salamonie.

stateparks.IN.gov