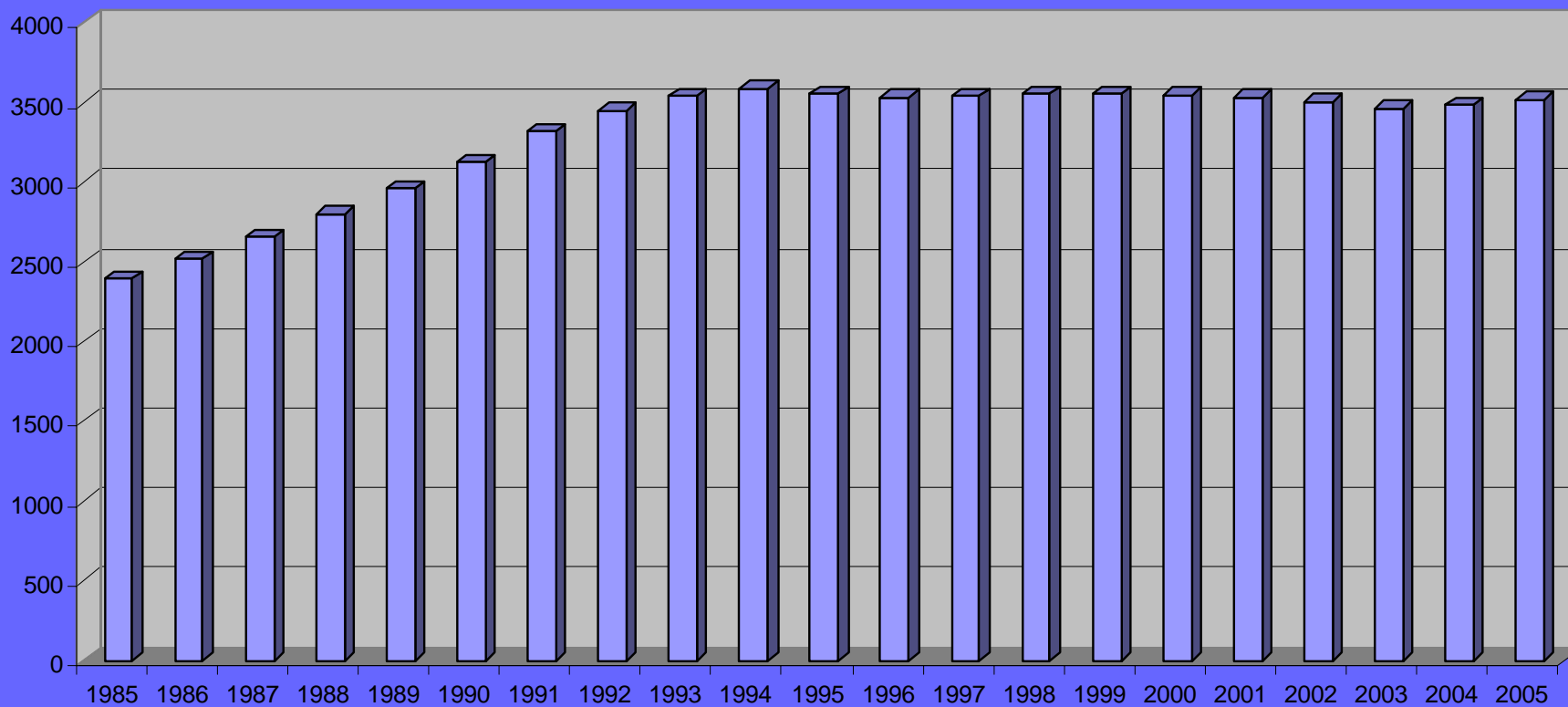
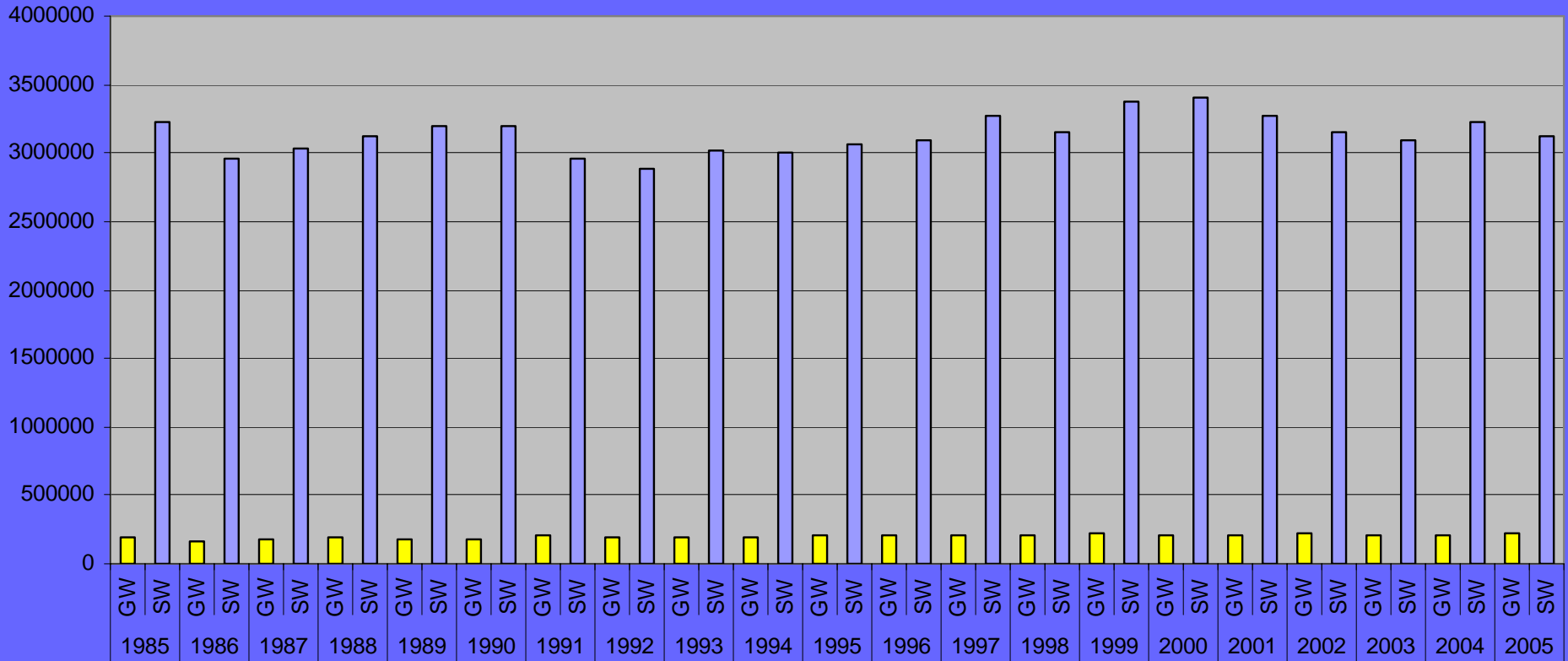


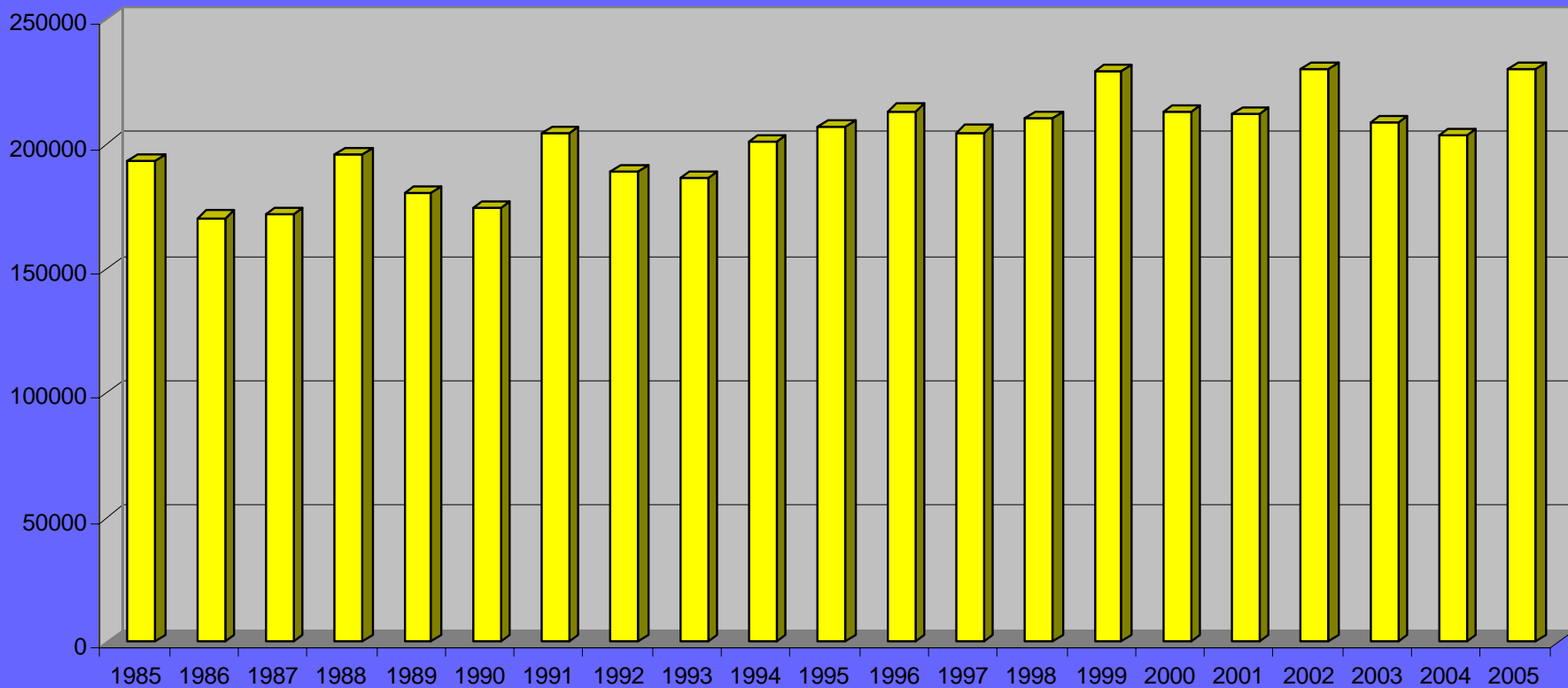
**TOTAL REGISTERED SIGNIFICANT WATER WITHDRAWAL FACILITIES
1985 - 2005**



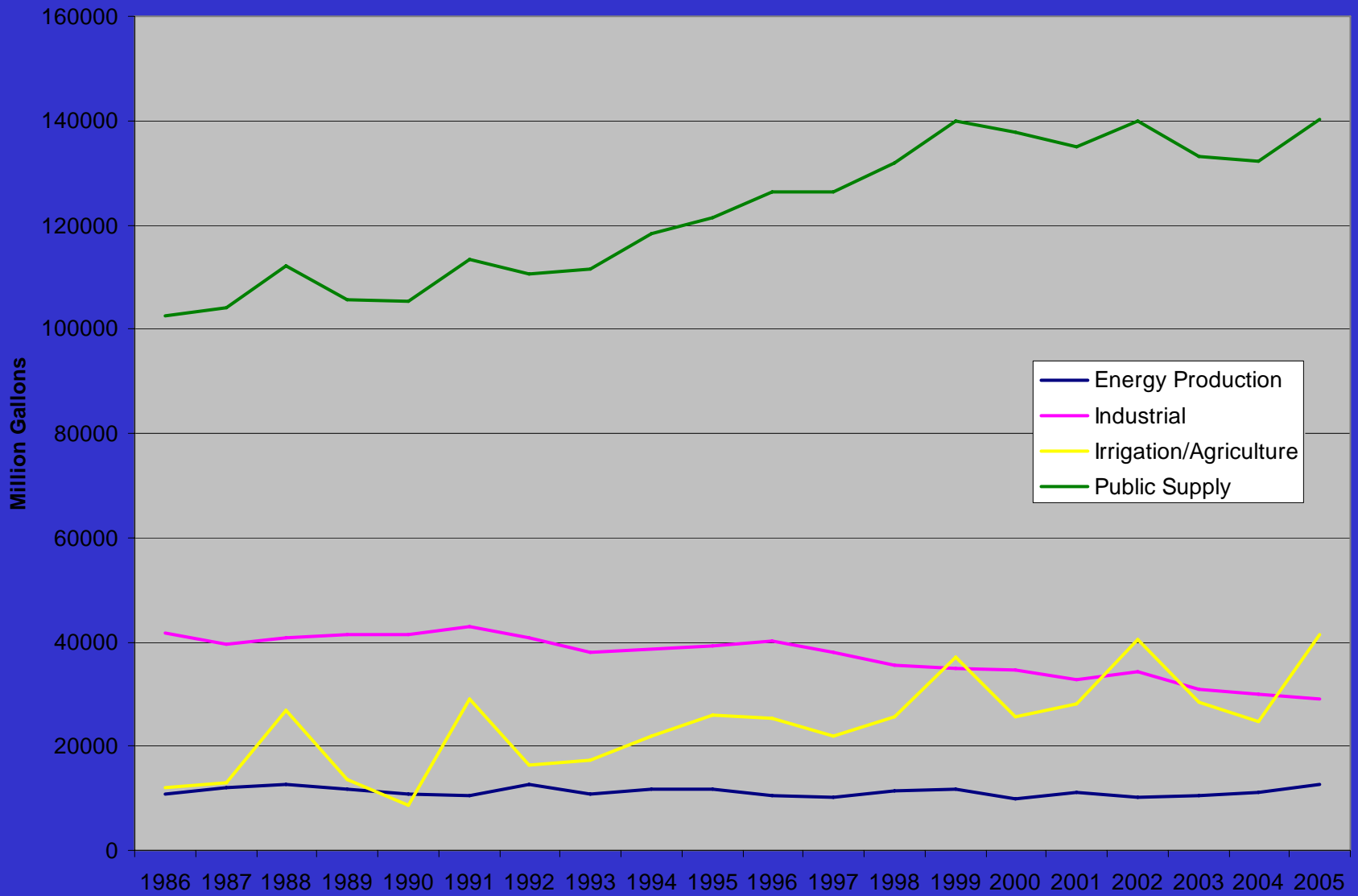
**REPORTED GROUND WATER AND SURFACE WATER WITHDRAWALS (MG)
1985 - 2005**



**REPORTED GROUND WATER WITHDRAWALS (MG)
1985 - 2005**



Groundwater Withdrawals



Surface Water Withdrawals

