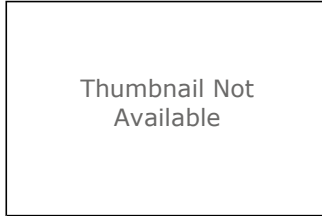


# UNC\_Limited\_Data\_Nonaquifer\_Coverage\_Grant

## Shapefile



## Tags

No data zone, water wells, unconsolidated aquifer, Indiana Department of Natural Resources (IDNR), Division of Water (DOW), Grant County, Indiana, USA

## Summary

Display and/or analyses requiring spatial distribution of potentiometric surface elevations in Grant County.

## Description

This file is a digital geospatial polygon coverage of the lack of available aquifer static water level data within unconsolidated aquifers for Grant County in Indiana.

## Credits

It is requested that the Indiana Department of Natural Resources, Division of Water be cited in any products generated from this data.

## Use limitations

Acknowledgement of the following agency in products derived from these data: Indiana Department of Natural Resources, Division of Water. This map was compiled by staff of the Indiana Department of Natural Resources, Division of Water using data believed to be reasonably accurate. However, a degree of error is inherent in all maps. This product is distributed "as-is" without warranties of any kind, either expressed or implied. The maps are intended for use only at the published scale. The information on these media is proprietary to the State of Indiana, Indiana Department of Natural Resources, Division of Water. Any copying, adaptation, or distribution of these data without the express written consent of IDNR-DOW is discouraged. It is not recommended that these data be used for purposes other than general estimate of static water level elevations. Site specific conditions may vary considerably from mapped estimates.

## Extent

**West** -85.868299 **East** -85.652387  
**North** 40.653763 **South** 40.376158

## Scale Range

**Maximum (zoomed in)** 1:50,000  
**Minimum (zoomed out)** 1:5,000,000

## ArcGIS Metadata ►

### Topics and Keywords ►

\*CONTENT TYPE Downloadable Data  
EXPORT TO FGDC CSDGM XML FORMAT AS RESOURCE DESCRIPTION No

PLACE KEYWORDS Grant County, Indiana, USA

THEME KEYWORDS unconsolidated

THEME KEYWORDS static water level

THEME KEYWORDS groundwater

THEME KEYWORDS water wells

THEME KEYWORDS Indiana Department of Natural Resources (IDNR)

THEME KEYWORDS Division of Water (DOW)

*Hide Topics and Keywords ▲*

### Citation ►

\*TITLE UNC\_Limited\_Data\_Nonaquifer\_Coverage\_Grant  
PUBLICATION DATE 2013-10-01 00:00:00

EDITION 1

PRESENTATION FORMATS \*digital map

SERIES

NAME Unconsolidated Potentiometric Surface Map  
ISSUE PSM 33-A

OTHER CITATION DETAILS This map was compiled from multiple unpublished work maps based on USGS quadrangles at 1:24,000 scale: Fairmount, Gas City, Hartford City West, La Fontaine, Marion, Mount Etna, Point Isabel, Roll, Somerset, Sweetser, Van Buren, and Warren.

[Hide Citation](#) ▲

## Citation Contacts ►

### RESPONSIBLE PARTY

ORGANIZATION'S NAME Indiana Department of Natural Resources, Division of Water  
CONTACT'S ROLE publisher

### CONTACT INFORMATION ►

#### ADDRESS

DELIVERY POINT Indianapolis, Indiana, USA

[Hide Contact information](#) ▲

### RESPONSIBLE PARTY

ORGANIZATION'S NAME Indiana Department of Natural Resources Division of Water  
INDIVIDUAL'S NAME Glenn E. Grove  
CONTACT'S POSITION Resource Assessment Section  
CONTACT'S ROLE originator

### CONTACT INFORMATION ►

#### PHONE

VOICE (317) 234-1102

FAX (317) 233-4579

#### ADDRESS

TYPE both

DELIVERY POINT 402 W Washington Street W264

CITY Indianapolis

ADMINISTRATIVE AREA Indiana

POSTAL CODE 46204

COUNTRY US

E-MAIL ADDRESS [ggrove@dnr.in.gov](mailto:ggrove@dnr.in.gov)

#### ONLINE RESOURCE

LOCATION [www.in.gov/dnr/water/7256.htm](http://www.in.gov/dnr/water/7256.htm)

FUNCTION PERFORMED information

HOURS OF SERVICE 8:15am - 4:15pm M-F except Government Holidays

[Hide Contact information](#) ▲

[Hide Citation Contacts](#) ▲

## Resource Details ►

DATASET LANGUAGES English (UNITED STATES)  
DATASET CHARACTER SET utf8 - 8 bit UCS Transfer Format

STATUS completed

SPATIAL REPRESENTATION TYPE \*vector

\*PROCESSING ENVIRONMENT Microsoft Windows XP Version 5.1 (Build 2600) Service Pack 3; Esri ArcGIS 10.1.1.3143

### CREDITS

It is requested that the Indiana Department of Natural Resources, Division of Water be cited in any products generated from this data.

### ARCGIS ITEM PROPERTIES

\*NAME UNC\_Limited\_Data\_Nonaquifer\_Coverage\_Grant

\*SIZE 0.034

\*LOCATION file://

\\iotfilp19pw\dnr\dow\common\RA\_FILES\_ONLINE\33\_Grant\33\_Grant\_County\_PSM\_shapefiles\UNC\_Limited\_Data\_Nonaquifer\_Coverage\_Grant.shp

\*ACCESS PROTOCOL Local Area Network

[Hide Resource Details](#) ▲

Extents ►

EXTENT	
DESCRIPTION	Extent used for searching
GEOGRAPHIC EXTENT	
BOUNDING RECTANGLE	
WEST LONGITUDE	-85.644456
EAST LONGITUDE	-85.331288
SOUTH LATITUDE	40.998355
NORTH LATITUDE	41.189792
EXTENT CONTAINS THE RESOURCE	Yes

EXTENT	
DESCRIPTION	Publication Date
TEMPORAL EXTENT	
DATE AND TIME	2013-10-01 00:00:00

EXTENT	
GEOGRAPHIC EXTENT	
BOUNDING RECTANGLE	
EXTENT TYPE	Extent used for searching
* WEST LONGITUDE	-85.868299
* EAST LONGITUDE	-85.652387
* NORTH LATITUDE	40.653763
* SOUTH LATITUDE	40.376158
* EXTENT CONTAINS THE RESOURCE	Yes

EXTENT IN THE ITEM'S COORDINATE SYSTEM	
* WEST LONGITUDE	596067.299400
* EAST LONGITUDE	613932.767200
* SOUTH LATITUDE	4470372.913100
* NORTH LATITUDE	4500943.263000
* EXTENT CONTAINS THE RESOURCE	Yes

Hide Extents ▲

Resource Points of Contact ►

POINT OF CONTACT	
ORGANIZATION'S NAME	Indiana Department of Natural Resources Division of Water
INDIVIDUAL'S NAME	Glenn E. Grove
CONTACT'S POSITION	Resource Assessment Section
CONTACT'S ROLE	point of contact

CONTACT INFORMATION ►

PHONE	
VOICE	(317) 234-1102
FAX	(317) 233-4579
ADDRESS	
TYPE	both
DELIVERY POINT	402 W Washington Street W264
CITY	Indianapolis
ADMINISTRATIVE AREA	Indiana
POSTAL CODE	46204
COUNTRY	US
E-MAIL ADDRESS	ggrove@dnr.in.gov

ONLINE RESOURCE	
LOCATION	www.in.gov/dnr/water/7256.htm
FUNCTION PERFORMED	download

HOURS OF SERVICE	8:15am - 4:15pm M-F except Government Holidays
Hide Contact information ▲	

Hide Resource Points of Contact ▲

Resource Maintenance ▶

RESOURCE MAINTENANCE  
UPDATE FREQUENCY not planned

Hide Resource Maintenance ▲

Resource Constraints ▶

CONSTRAINTS

LIMITATIONS OF USE

Acknowledgement of the following agency in products derived from these data: Indiana Department of Natural Resources, Division of Water. This map was compiled by staff of the Indiana Department of Natural Resources, Division of Water using data believed to be reasonably accurate. However, a degree of error is inherent in all maps. This product is distributed "as-is" without warranties of any kind, either expressed or implied. The maps are intended for use only at the published scale. The information on these media is proprietary to the State of Indiana, Indiana Department of Natural Resources, Division of Water. Any copying, adaptation, or distribution of these data without the express written consent of IDNR-DOW is discouraged. It is not recommended that these data be used for purposes other than general estimate of static water level elevations. Site specific conditions may vary considerably from mapped estimates.

LEGAL CONSTRAINTS

LIMITATIONS OF USE

The Indiana Department of Natural Resources, Division of Water has compiled this data set using data believed to be reasonably accurate. However, the Division makes no representation as to the accuracy, completeness, or usefulness of the data or data set. A degree of error is inherent in all maps. This map is intended for use only at the published scale. Reference to any specific commercial product, process, or service does not constitute an endorsement, recommendation, or favoring by the Division. Copyright 2013, Indiana Department of Natural Resources, Division of Water All Rights Reserved Any copying, adaptation, or distribution of these data without the express written consent of the Indiana Department of Natural Resources, Division of Water is discouraged.

ACCESS CONSTRAINTS other restrictions

OTHER CONSTRAINTS

This file is available to anyone, but access may be contingent on written request, specific terms relevant to the agency or person making the request, and/or current freedom of information statutes in the State of Indiana.

Hide Resource Constraints ▲

Spatial Reference ▶

ARCGIS COORDINATE SYSTEM

\* TYPE Projected

\* GEOGRAPHIC COORDINATE REFERENCE GCS\_North\_American\_1983

\* PROJECTION NAD\_1983\_UTM\_Zone\_16N

\* COORDINATE REFERENCE DETAILS

PROJECTED COORDINATE SYSTEM

WELL-KNOWN IDENTIFIER 26916

X ORIGIN -5120900

Y ORIGIN -9998100

XY SCALE 450445547.3910538

Z ORIGIN -100000

Z SCALE 10000

M ORIGIN -100000

M SCALE 10000

XY TOLERANCE 0.001

Z TOLERANCE 0.001

M TOLERANCE 0.001

HIGH PRECISION true

LATEST WELL-KNOWN IDENTIFIER 26916

WELL-KNOWN TEXT PROJCS["NAD\_1983\_UTM\_Zone\_16N",GEOGCS["GCS\_North\_American\_1983",DATUM["D\_North\_American\_1983",SPHEROID["GRS\_1980",6378137.0,298.257222101]],PRIMEM["Greenwich",0.0],UNIT["Degree",0.0174532925199433]],PROJECTION["Transverse\_Mercator"],PARAMETER["False\_Easting",500000.0],PARAMETER["False\_Northing",0.0],PARAMETER["Central\_Meridian",-87.0],PARAMETER["Scale\_Factor",0.9996],PARAMETER["Latitude\_Of\_Origin",0.0],UNIT["Meter",1.0],AUTHORITY["EPSG",26916]]

REFERENCE SYSTEM IDENTIFIER

\* VALUE 26916

\* CODESPACE EPSG

\* VERSION 7.11.2

Hide Spatial Reference ▲

Spatial Data Properties ▶

VECTOR ▶

\* LEVEL OF TOPOLOGY FOR THIS DATASET geometry only

GEOMETRIC OBJECTS

FEATURE CLASS NAME    UNC\_Limited\_Data\_Nonaquifer\_Coverage\_Grant  
\*OBJECT TYPE        composite  
\*OBJECT COUNT      3

[Hide Vector](#) ▲

ARCGIS FEATURE CLASS PROPERTIES ►

FEATURE CLASS NAME    UNC\_Limited\_Data\_Nonaquifer\_Coverage\_Grant  
\*FEATURE TYPE        Simple  
\*GEOMETRY TYPE       Polygon  
\*HAS TOPOLOGY        FALSE  
\*FEATURE COUNT       3  
\*SPATIAL INDEX        TRUE  
\*LINEAR REFERENCING   FALSE

[Hide ArcGIS Feature Class Properties](#) ▲

[Hide Spatial Data Properties](#) ▲

## Data Quality ►

SCOPE OF QUALITY INFORMATION ►

RESOURCE LEVEL        dataset

[Hide Scope of quality information](#) ▲

DATA QUALITY REPORT - COMPLETENESS OMISSION ►

MEASURE DESCRIPTION   In conducting the mapping, the author(s) evaluated hundreds of water well records, especially those having relatively complete information on well location, static water level, well depth, ground elevation, and lithology. There were areas in the county with sparse information because of lack of well records or incomplete records.

[Hide Data quality report - Completeness omission](#) ▲

DATA QUALITY REPORT - QUANTITATIVE ATTRIBUTE ACCURACY ►

MEASURE DESCRIPTION   The mapping was conducted after a thorough documentation of well locations and water well record details.

[Hide Data quality report - Quantitative attribute accuracy](#) ▲

DATA QUALITY REPORT - ABSOLUTE EXTERNAL POSITIONAL ACCURACY ►

MEASURE DESCRIPTION   The locations of many wells were field checked and the locations posted on 7.5 minute topographic maps. Visual confirmation of wells was not always possible. Many locations were based only on the street address, driving directions, or other location information provided on the well record.

[Hide Data quality report - Absolute external positional accuracy](#) ▲

[Hide Data Quality](#) ▲

## Lineage ►

PROCESS STEP ►

WHEN THE PROCESS OCCURRED    2013-05-01    00:00:00

DESCRIPTION    Coverage was selected by careful evaluation of the lack of water well records within an area by determine a minimum of one mile from available data. Using field located wells that contained complete and reasonable information a one mile buffer was applied. Areas outside of the compiled buffer were considered a no data zone and delineated as such.

PROCESS CONTACT

ORGANIZATION'S NAME    Indiana Department of Natural Resources Division of Water  
INDIVIDUAL'S NAME       Glenn E. Grove  
CONTACT'S POSITION       Resource Assessment Section  
CONTACT'S ROLE           processor

CONTACT INFORMATION ►

PHONE

VOICE    (317) 234-1102

FAX      (317) 233-4579

ADDRESS

TYPE    both

DELIVERY POINT    402 W Washington Street W264

CITY Indianapolis  
ADMINISTRATIVE AREA Indiana  
POSTAL CODE 46204  
COUNTRY US  
E-MAIL ADDRESS ggrove@dnr.in.gov

ONLINE RESOURCE  
LOCATION www.in.gov/dnr/water/7256.htm  
FUNCTION PERFORMED download

[Hide Contact information ▲](#)

[Hide Process step ▲](#)

SOURCE DATA ►  
DESCRIPTION Water well records from the IDNR-DOW well record database; USGS topography maps; various consultant geotechnical reports

[Hide Source data ▲](#)

[Hide Lineage ▲](#)

## Geoprocessing history ►

PROCESS  
PROCESS NAME  
DATE 2013-11-14 11:24:33  
TOOL LOCATION c:\program files\arcgis\desktop10.1\ArcToolbox\Toolboxes\Data Management Tools.tbx\CalculateField  
COMMAND ISSUED  
CalculateField UNC\_Limited\_Data\_Nonaquifer\_Coverage\_Grant no\_data "no data/ no aquifer" VB #  
INCLUDE IN LINEAGE WHEN EXPORTING METADATA No

[Hide Geoprocessing history ▲](#)

## Distribution ►

DISTRIBUTOR ►  
CONTACT INFORMATION  
ORGANIZATION'S NAME Indiana Department of Natural Resources Division of Water  
INDIVIDUAL'S NAME Glenn E. Grove  
CONTACT'S POSITION Resource Assessment Section  
CONTACT'S ROLE originator

CONTACT INFORMATION ►  
PHONE  
VOICE (317) 234-1102  
FAX (317) 233-4579  
  
ADDRESS  
TYPE both  
DELIVERY POINT 402 W Washington Street W264  
CITY Indianapolis  
ADMINISTRATIVE AREA Indiana  
POSTAL CODE 46204  
COUNTRY US  
E-MAIL ADDRESS ggrove@dnr.in.gov

ONLINE RESOURCE  
LOCATION www.in.gov/dnr/water/7256.htm  
FUNCTION PERFORMED download

HOURS OF SERVICE 8:15am - 4:15pm M-F except Government Holidays  
[Hide Contact information ▲](#)

[Hide Distributor ▲](#)

DISTRIBUTION FORMAT  
\* NAME Shapefile

TRANSFER OPTIONS

UNITS OF DISTRIBUTION   Shapefile

\*TRANSFER SIZE   0.034

ONLINE SOURCE

LOCATION   <http://www.in.gov/dnr/water/7256.htm>

DESCRIPTION   Data and Maps

*Hide Distribution ▲*

**Fields ►**

DETAILS FOR OBJECT [UNC\\_Limited\\_Data\\_Nonaquifer\\_Coverage\\_Grant ►](#)

\*TYPE   Feature Class

\*ROW COUNT   3

DEFINITION

No Data Zone

DEFINITION SOURCE

Glenn E. Grove

FIELD [FID ►](#)

\*ALIAS   FID

\*DATA TYPE   OID

\*WIDTH   4

\*PRECISION   0

\*SCALE   0

\*FIELD DESCRIPTION

Internal feature number.

\*DESCRIPTION SOURCE

ESRI

\*DESCRIPTION OF VALUES   Sequential unique whole numbers that are automatically generated.

*Hide Field FID ▲*

FIELD [Shape ►](#)

\*ALIAS   Shape

\*DATA TYPE   Geometry

\*WIDTH   0

\*PRECISION   0

\*SCALE   0

\*FIELD DESCRIPTION

Feature geometry.

\*DESCRIPTION SOURCE

ESRI

\*DESCRIPTION OF VALUES   Coordinates defining the features.

*Hide Field Shape ▲*

FIELD [no\\_data ►](#)

\*ALIAS   no\_data

\*DATA TYPE   String

\*WIDTH   50

\*PRECISION   0

\*SCALE   0

*Hide Field no\_data ▲*

*Hide Details for object [UNC\\_Limited\\_Data\\_Nonaquifer\\_Coverage\\_Grant ▲](#)*

*Hide Fields ▲*

**Metadata Details ►**

METADATA LANGUAGE   English (UNITED STATES)

METADATA CHARACTER SET   utf8 - 8 bit UCS Transfer Format

SCOPE OF THE DATA DESCRIBED BY THE METADATA   \*dataset

SCOPE NAME \*dataset

\*LAST UPDATE 2013-11-14

#### ARCGIS METADATA PROPERTIES

METADATA FORMAT ArcGIS 1.0

METADATA STYLE FGDC CSDGM Metadata

STANDARD OR PROFILE USED TO EDIT METADATA FGDC

CREATED IN ARCGIS FOR THE ITEM 2013-11-14 11:24:33

LAST MODIFIED IN ARCGIS FOR THE ITEM 2013-11-14 14:24:42

#### AUTOMATIC UPDATES

HAVE BEEN PERFORMED Yes

LAST UPDATE 2013-11-14 14:17:02

[Hide Metadata Details ▲](#)

## Metadata Contacts ►

#### METADATA CONTACT

ORGANIZATION'S NAME Indiana Department of Natural Resources Division of Water

INDIVIDUAL'S NAME Glenn E. Grove

CONTACT'S POSITION Resource Assessment Section

CONTACT'S ROLE originator

#### CONTACT INFORMATION ►

##### PHONE

VOICE (317) 234-1102

FAX (317) 233-4579

##### ADDRESS

TYPE both

DELIVERY POINT 402 W Washington Street W264

CITY Indianapolis

ADMINISTRATIVE AREA Indiana

POSTAL CODE 46204

COUNTRY US

E-MAIL ADDRESS [ggrove@dnr.in.gov](mailto:ggrove@dnr.in.gov)

#### ONLINE RESOURCE

LOCATION [www.in.gov/dnr/water/7256.htm](http://www.in.gov/dnr/water/7256.htm)

FUNCTION PERFORMED information

HOURS OF SERVICE 8:15am - 4:15pm M-F except Government Holidays

[Hide Contact information ▲](#)

[Hide Metadata Contacts ▲](#)

## Metadata Maintenance ►

#### MAINTENANCE

UPDATE FREQUENCY not planned

[Hide Metadata Maintenance ▲](#)

## Metadata Constraints ►

#### LEGAL CONSTRAINTS

ACCESS CONSTRAINTS other restrictions

#### OTHER CONSTRAINTS

Access constraints: This metadata file is intended to accompany the subject geospatial set. This file may be updated, and the most recent version is available by contacting the IDNR Division of Water.

[Hide Metadata Constraints ▲](#)

## FGDC Metadata (read-only) ▼