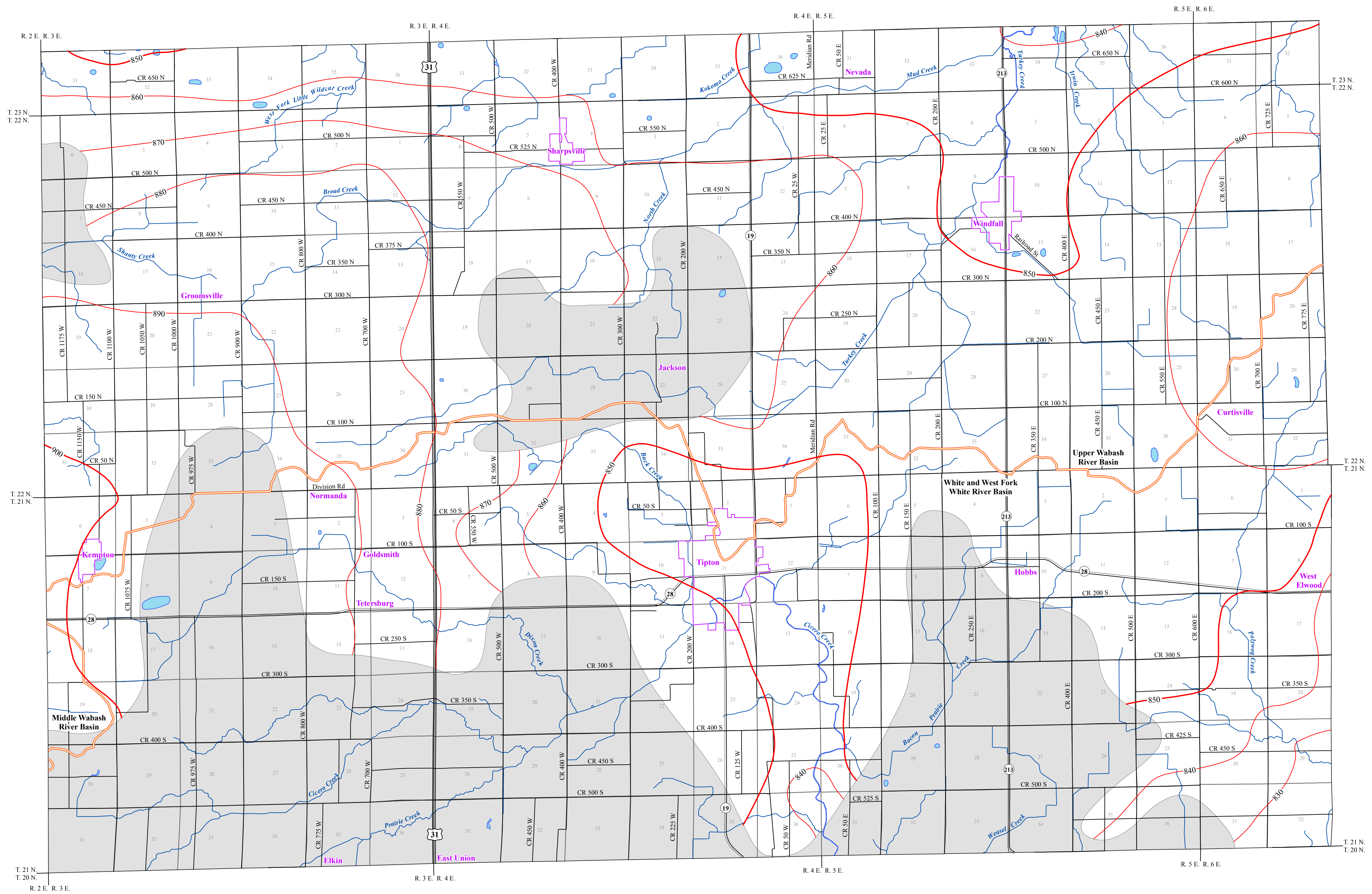


POTENTIOMETRIC SURFACE MAP OF THE BEDROCK AQUIFERS OF TIPTON COUNTY, INDIANA



Tipton County, Indiana is located in the central portion of the state bounded by Clinton, Howard, Grant, Madison, and Hamilton counties to the west, north, northeast, east, and south, respectively. The northern half of the county is situated within the Upper Wabash River Basin, and a small portion in the southwest is within the Middle Wabash River Basin. The remainder of the southern half of the county is situated within the White and West Fork White River Basin.

The Bedrock Potentiometric Surface Map (PSM) of Tipton County is mapped by contouring the elevations of 597 static water levels reported on well records received primarily over a 50-year period. These wells are completed in bedrock aquifers at various depths and typically under confined conditions (bounded by impermeable layers above and below the water bearing formation). However, some wells are completed in unconfined settings with water bearing formations not bounded by impermeable layers. The potentiometric surface is a measure of the pressure on water in a water bearing formation, or aquifer. The groundwater level in an unconfined aquifer system is at atmospheric pressure and will not rise in a well above the top of the aquifer formation. The potentiometric surface in most wells completed in bedrock within Tipton County rises above the top of the bedrock aquifer due to the confining nature of the system.

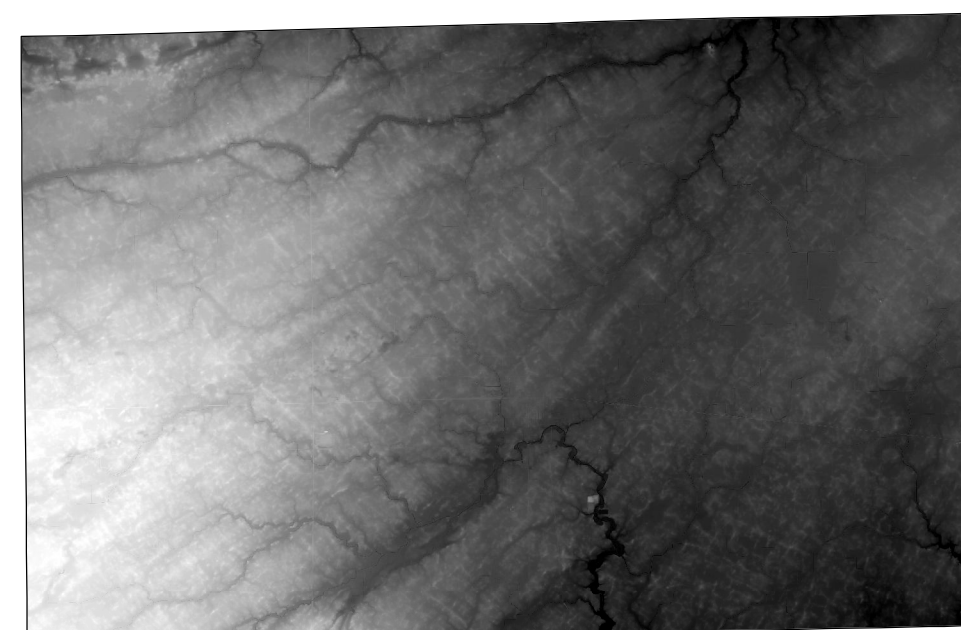
Static water level measurements in individual wells used to construct county PSM's are indicative of the water level at the time of well completion. The groundwater level within an aquifer constantly fluctuates in response to rainfall, evapotranspiration, groundwater movement, and pumpage. Therefore, current site-specific conditions may differ due to local or seasonal variations in measured static water levels. Because fluctuations in groundwater are typically small, static water levels can be used to construct a generalized PSM. Groundwater flow is naturally from areas of recharge toward areas of discharge. The contours were determined based on the amount of data and the degree of change in water levels between wells. Bedrock potentiometric surface elevation contours have not been extended across portions of southern and central Tipton County. Some of this area is lacking in data and/or covered by more prolific unconsolidated deposits that limit the necessity to complete wells in bedrock.

Data collected to generate the PSM were standardized and validated for accuracy. Universal Transverse Mercator (UTM) coordinates for the water wells were either physically obtained in the field, determined through address geocoding, or determined based on water well records. The location of the majority of the water well records used to make the PSM were field verified. Elevation data were derived from a digital elevation model based on LiDAR. Quality control/quality assurance procedures were utilized to refine or remove data where errors were readily apparent.

Potentiometric surface contours are developed based on the static water levels from the bedrock aquifer systems and displayed here with 10-foot contours and 50-foot index contours. Bedrock potentiometric surface contours in Tipton County range from a high of 900 feet mean sea level (msl) in the southwest edge of the county, to a low of 830 feet msl in the southeast corner of the county. Groundwater flow direction within the bedrock aquifer system of Tipton County is generally towards the north and northeast in the northern portion of the county. Groundwater flow transitions to an east southeast flow south of the major drainage divide.

The county PSM can be used to define the regional groundwater flow path and to identify significant areas of groundwater recharge and discharge. County PSM's represent overall regional characteristics and are not intended to be a substitute for site-specific studies.

Digital Elevation Model of Tipton County, Indiana

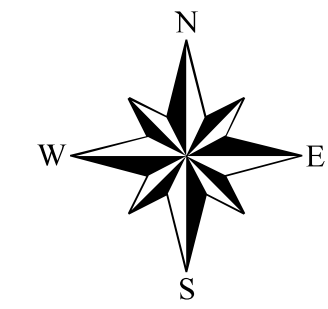
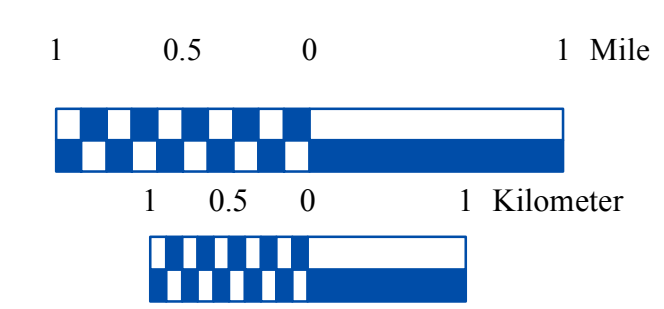
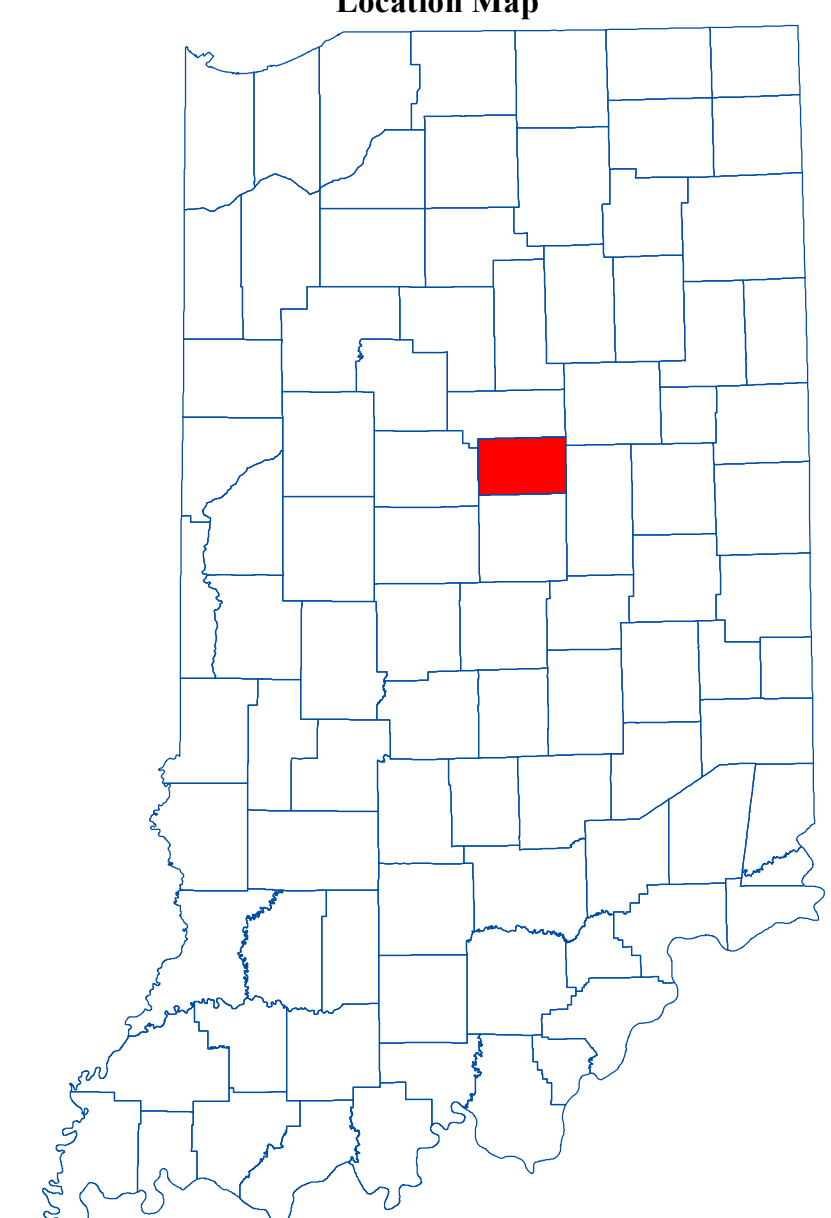


Elevation (feet)
939
813

EXPLANATION

- Line of equal elevation, in feet above mean sea level
- Stream
- County Road
- State Road
- US Highway
- Basin Boundary
- No Aquifer Material or Limited Data
- Municipal Boundary
- Lake

Location Map



Map Use and Disclaimer Statement

We request that the following agency be acknowledged in products derived from this map. Indiana Department of Natural Resources, Division of Water.

This map was compiled by staff of the Indiana Department of Natural Resources, Division of Water using data believed to be reasonably accurate. However, a degree of error is inherent in all maps. This product is distributed "as is" without warranties of any kind, either expressed or implied. This map is intended for use only at the published scale.

This map is created from several existing shapefiles. Township and Range Lines of Indiana (line shapefile, 20020621), Land Survey Lines of Indiana (polygon shapefile, 20020621), and County Boundaries of Indiana (polygon shapefile, 20020621), are all from the Indiana Geological Survey and based on a 1:24,000 scale. Roads (TIGER and INDOT) (line shapefile, 2005) is from the Indiana Department of Transportation and based on a 1:100,000 scale. System1 (line shapefile, 2003) is from the Indiana Department of Transportation and based on a 1:24,000 scale. Incorporated Areas in Indiana 2000 (polygon shapefile, 20021000) is from the U.S. Census Bureau and based on a 1:100,000 scale. Hydrography, Streams (NHD) (line shapefile, 20081218), Rivers (NHD) (polygon shapefile, 20081218), and Lakes (NHD) (polygon shapefile, 20081218) are from the U.S. Geological Survey and based on a 1:24,000 scale. Basin boundaries are modified from Watershed Boundary Dataset (polygon shapefile, 2008) from the Natural Resource Conservation Service and based on a 1:24,000 scale. Digital Elevation Model image is derived from the Indiana OrthoLIDAR Statewide Collection Program (2011). Tipton County Bedrock No Aquifer Material or Limited Data (polygon shapefile, Kornek, 2013) and Potentiometric Surface Contours of the Bedrock Aquifers of Tipton County, Indiana (line shapefile, Kornek, 2013) are based on a 1:24,000 scale.

Potentiometric Surface Map of the Bedrock Aquifers of Tipton County, Indiana

by
Ginger C. Kornek
Division of Water, Resource Assessment Section

December 2013