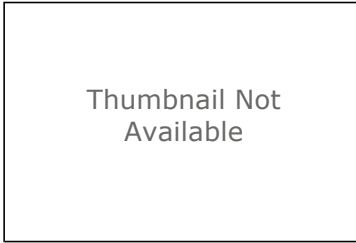


Limited Unconsolidated Aquifer Data Area for Fayette County, Indiana

Shapefile



Tags

No data zone, water wells, unconsolidated aquifer, Indiana Department of Natural Resources (IDNR), Division of Water (DOW), Fayette County, Indiana, USA

Summary

Display and/or analyses requiring spatial distribution of lack of static water levels in unconsolidated aquifers of Fayette County.

Description

This file is a digital geospatial polygon coverage of the lack of available aquifer static water level data within unconsolidated aquifers for Fayette County in Indiana.

Credits

It is requested that the Indiana Department of Natural Resources, Division of Water be cited in any products generated from this data.

Use limitations

Acknowledgement of the following agency in products derived from these data: Indiana Department of Natural Resources, Division of Water. This map was compiled by staff of the Indiana Department of Natural Resources, Division of Water using data believed to be reasonably accurate. However, a degree of error is inherent in all maps. This product is distributed "as-is" without warranties of any kind, either expressed or implied. The maps are intended for use only at the published scale. The information on these media is proprietary to the State of Indiana, Indiana Department of Natural Resources, Division of Water. Any copying, adaptation, or distribution of these data without the express written consent of IDNR-DOW is discouraged. It is not recommended that these data be used for purposes other than general estimate of static water level elevations. Site specific conditions may vary considerably from mapped estimates.

Extent

West	-85.306583	East	-85.028784
North	39.790204	South	39.521323

Scale Range

Maximum (zoomed in)	1:50,000
Minimum (zoomed out)	1:5,000,000

ArcGIS Metadata ►

Topics and Keywords ►

THEMES OR CATEGORIES OF THE RESOURCE geoscientificInformation

* CONTENT TYPE Downloadable Data

EXPORT TO FGDC CSDGM XML FORMAT AS RESOURCE DESCRIPTION No

PLACE KEYWORDS Fayette County, Indiana, USA

THEME KEYWORDS Unconsolidated

THEME KEYWORDS static water level

THEME KEYWORDS groundwater

THEME KEYWORDS water wells

THEME KEYWORDS Indiana Department of Natural Resources (IDNR)

THEME KEYWORDS Division of Water (DOW)

[Hide Topics and Keywords ▲](#)

Citation ►

TITLE Limited Unconsolidated Aquifer Data Area for Fayette County, Indiana

CREATION DATE 2014-09-01 00:00:00

PUBLICATION DATE 2014-09-30 00:00:00

EDITION 1

PRESENTATION FORMATS *digital map

SERIES

NAME Unconsolidated Potentiometric Surface Map

ISSUE PSM 44-A

OTHER CITATION DETAILS

This map was compiled from multiple unpublished work maps based on USGS quadrangles at 1:24,000 scale: Alpine, Brownsville, Cambridge City, Connersville, Everton, Falmouth, Lewisville, and New Salem.

[Hide Citation ▲](#)

Citation Contacts ►

RESPONSIBLE PARTY

ORGANIZATION'S NAME Indiana Department of Natural Resources, Division of Water

CONTACT'S ROLE publisher

CONTACT INFORMATION ►

ADDRESS

DELIVERY POINT Indianapolis, Indiana, USA

[Hide Contact information ▲](#)

RESPONSIBLE PARTY

ORGANIZATION'S NAME Indiana Department of Natural Resources Division of Water

INDIVIDUAL'S NAME Glenn E. Grove

CONTACT'S POSITION Resource Assessment Section

CONTACT'S ROLE originator

CONTACT INFORMATION ►

PHONE

VOICE (317) 232-4175

FAX (317) 233-4579

ADDRESS

TYPE both

DELIVERY POINT 402 W Washington Street W264

CITY Indianapolis

ADMINISTRATIVE AREA Indiana

POSTAL CODE 46204

COUNTRY US

E-MAIL ADDRESS ggrove@dnr.in.gov

ONLINE RESOURCE

LOCATION www.in.gov/dnr/water/7256.htm

FUNCTION PERFORMED [information](#)

HOURS OF SERVICE

8:15am - 4:15pm M-F except Government Holidays

[Hide Contact information](#) ▲

[Hide Citation Contacts](#) ▲

Resource Details ►

DATASET LANGUAGES [English \(UNITED STATES\)](#)

DATASET CHARACTER SET [utf8 - 8 bit UCS Transfer Format](#)

STATUS [completed](#)

SPATIAL REPRESENTATION TYPE [*vector](#)

[*PROCESSING ENVIRONMENT](#) [Microsoft Windows XP Version 5.1 \(Build 2600\) Service Pack 3; Esri ArcGIS 10.2.2.3552](#)

CREDITS

It is requested that the Indiana Department of Natural Resources, Division of Water be cited in any products generated from this data.

ARCGIS ITEM PROPERTIES

[*NAME](#) [UNC_Limited_Data_Nonaquifer_Fayette](#)

[*SIZE](#) [0.251](#)

[*LOCATION](#) [file://](#)

[\\iotfilp19pw\dnr\dow\common\RA_FILES_ONLINE\44_Fayette\44_Fayette_County_PSM\UNC_Limited_Data_Nonaquifer_Fayette.shp](#)

[*ACCESS PROTOCOL](#) [Local Area Network](#)

[Hide Resource Details](#) ▲

Extents ►

EXTENT

DESCRIPTION

[Extent used for searching](#)

GEOGRAPHIC EXTENT

BOUNDING RECTANGLE

[WEST LONGITUDE](#) [-85.644456](#)

[EAST LONGITUDE](#) [-85.331288](#)

[SOUTH LATITUDE](#) [40.998355](#)

[NORTH LATITUDE](#) [41.189792](#)

[EXTENT CONTAINS THE RESOURCE](#) [Yes](#)

EXTENT

DESCRIPTION

[Publication Date](#)

TEMPORAL EXTENT

[DATE AND TIME](#) [2014-09-30 00:00:00](#)

EXTENT

GEOGRAPHIC EXTENT

BOUNDING RECTANGLE

[EXTENT TYPE](#) [Extent used for searching](#)

[*WEST LONGITUDE](#) [-85.306583](#)

[*EAST LONGITUDE](#) [-85.028784](#)

[*NORTH LATITUDE](#) [39.790204](#)

[*SOUTH LATITUDE](#) [39.521323](#)

[*EXTENT CONTAINS THE RESOURCE](#) [Yes](#)

EXTENT IN THE ITEM'S COORDINATE SYSTEM

- *WEST LONGITUDE 645549.057900
- *EAST LONGITUDE 668792.805100
- *SOUTH LATITUDE 4376472.081800
- *NORTH LATITUDE 4405854.300500
- *EXTENT CONTAINS THE RESOURCE Yes

[Hide Extents ▲](#)

Resource Points of Contact ►

POINT OF CONTACT

- ORGANIZATION'S NAME Indiana Department of Natural Resources Division of Water
- INDIVIDUAL'S NAME Glenn E. Grove
- CONTACT'S POSITION Resource Assessment Section
- CONTACT'S ROLE point of contact

CONTACT INFORMATION ►

PHONE

- VOICE (317) 232-4175
- FAX (317) 233-4579

ADDRESS

- TYPE both
- DELIVERY POINT 402 W Washington Street W264
- CITY Indianapolis
- ADMINISTRATIVE AREA Indiana
- POSTAL CODE 46204
- COUNTRY US
- E-MAIL ADDRESS ggrove@dnr.in.gov

ONLINE RESOURCE

- LOCATION www.in.gov/dnr/water/7256.htm
- FUNCTION PERFORMED download

HOURS OF SERVICE

- 8:15am - 4:15pm M-F except Government Holidays

[Hide Contact information ▲](#)

[Hide Resource Points of Contact ▲](#)

Resource Maintenance ►

RESOURCE MAINTENANCE

- UPDATE FREQUENCY not planned

[Hide Resource Maintenance ▲](#)

Resource Constraints ►

CONSTRAINTS

LIMITATIONS OF USE

Acknowledgement of the following agency in products derived from these data: Indiana Department of Natural Resources, Division of Water. This map was compiled by staff of the Indiana Department of Natural Resources, Division of Water using data believed to be reasonably accurate. However, a degree of error is inherent in all maps. This product is distributed "as-is" without warranties of any kind, either expressed or implied. The maps are intended for use only at the published scale. The information on these media is proprietary to the State of Indiana, Indiana Department of Natural Resources, Division of Water. Any copying, adaptation, or distribution of these data without the express written consent of IDNR-DOW is discouraged. It is not recommended that these data be used for purposes other than general estimate of static water level elevations. Site specific conditions may vary considerably from mapped estimates.

LEGAL CONSTRAINTS

LIMITATIONS OF USE

The Indiana Department of Natural Resources, Division of Water has compiled this data set using data believed to be reasonably accurate. However, the Division makes no representation as to the accuracy, completeness, or usefulness of the data or data set. A degree of error is inherent in all maps. This map is intended for use only at the published scale. Reference to any specific commercial product, process, or service does not constitute an endorsement, recommendation, or favoring by the Division. Copyright 2014, Indiana Department of Natural Resources, Division of Water All Rights Reserved Any copying, adaptation, or distribution of these data without the express written consent of the Indiana Department of Natural Resources, Division of Water is discouraged.

ACCESS CONSTRAINTS other restrictions

OTHER CONSTRAINTS

This file is available to anyone, but access may be contingent on written request, specific terms relevant to the agency or person making the request, and/or current freedom of information statutes in the State of Indiana.

Hide Resource Constraints ▲

Spatial Reference ►

ARCGIS COORDINATE SYSTEM

*TYPE Projected

*GEOGRAPHIC COORDINATE REFERENCE GCS_North_American_1983

*PROJECTION NAD_1983_UTM_Zone_16N

*COORDINATE REFERENCE DETAILS

PROJECTED COORDINATE SYSTEM

WELL-KNOWN IDENTIFIER 26916

X ORIGIN -5120900

Y ORIGIN -9998100

XY SCALE 450445547.3910538

Z ORIGIN -100000

Z SCALE 10000

M ORIGIN -100000

M SCALE 10000

XY TOLERANCE 0.001

Z TOLERANCE 0.001

M TOLERANCE 0.001

HIGH PRECISION true

LATEST WELL-KNOWN IDENTIFIER 26916

WELL-KNOWN TEXT PROJCS["NAD_1983_UTM_Zone_16N",GEOGCS["GCS_North_American_1983",DATUM["D_North_American_1983",SPHEROID["GRS_1980",6378137.0,298.257222101]],PRIMEM["Greenwich",0.0],UNIT["Degree",0.0174532925199433]],PROJECTION["Transverse_Mercator"],PARAMETER["False_Easting",500000.0],PARAMETER["False_Northing",0.0],PARAMETER["Central_Meridian",-87.0],PARAMETER["Scale_Factor",0.9996],PARAMETER["Latitude_Of_Origin",0.0],UNIT["Meter",1.0],AUTHORITY["EPSG",26916]]

REFERENCE SYSTEM IDENTIFIER

*VALUE 26916

*CODESPACE EPSG

*VERSION 8.2.6

Hide Spatial Reference ▲

Spatial Data Properties ►

VECTOR ►

*LEVEL OF TOPOLOGY FOR THIS DATASET geometry only

GEOMETRIC OBJECTS

FEATURE CLASS NAME UNC_Limited_Data_Nonaquifer_Fayette

*OBJECT TYPE composite

*OBJECT COUNT 8

Hide Vector ▲

ARCGIS FEATURE CLASS PROPERTIES ►

FEATURE CLASS NAME UNC_Limited_Data_Nonaquifer_Fayette

*FEATURE TYPE Simple

*GEOMETRY TYPE Polygon
*HAS TOPOLOGY FALSE
*FEATURE COUNT 8
*SPATIAL INDEX TRUE
*LINEAR REFERENCING FALSE

[Hide ArcGIS Feature Class Properties ▲](#)

[Hide Spatial Data Properties ▲](#)

Data Quality ►

SCOPE OF QUALITY INFORMATION ►

RESOURCE LEVEL dataset

[Hide Scope of quality information ▲](#)

DATA QUALITY REPORT - COMPLETENESS OMISSION ►

MEASURE DESCRIPTION

In conducting the mapping, the author(s) evaluated hundreds of water well records, especially those having relatively complete information on well location, static water level, well depth, ground elevation, and lithology. This layer is based on areas in the county with sparse information because of lack of well records or incomplete records, or poorly producing aquifers.

[Hide Data quality report - Completeness omission ▲](#)

DATA QUALITY REPORT - QUANTITATIVE ATTRIBUTE ACCURACY ►

MEASURE DESCRIPTION

The layer was created after a thorough documentation of well locations and water well record details.

[Hide Data quality report - Quantitative attribute accuracy ▲](#)

DATA QUALITY REPORT - ABSOLUTE EXTERNAL POSITIONAL ACCURACY ►

MEASURE DESCRIPTION

The locations of many wells were field checked and the locations posted on 7.5 minute topographic maps. Visual confirmation of wells was not always possible. Many locations were based only on the street address, driving directions, or other location information provided on the well record.

[Hide Data quality report - Absolute external positional accuracy ▲](#)

[Hide Data Quality ▲](#)

Lineage ►

PROCESS STEP ►

WHEN THE PROCESS OCCURRED 2014-09-30 00:00:00

DESCRIPTION

Coverage was selected by careful evaluation of the lack of water well records within an area by determine a minimum of one mile from available data. Using field located wells that contained complete and reasonable information a half mile buffer was applied. Areas outside of the compiled buffer were considered a no data zone and delineated as such.

PROCESS CONTACT

ORGANIZATION'S NAME Indiana Department of Natural Resources Division of Water

INDIVIDUAL'S NAME Glenn E. Grove

CONTACT'S POSITION Resource Assessment Section

CONTACT'S ROLE processor

[CONTACT INFORMATION ►](#)

PHONE

VOICE (317) 234-1102

FAX (317) 232-4175

ADDRESS

TYPE both

DELIVERY POINT 402 W Washington Street W264

CITY Indianapolis

ADMINISTRATIVE AREA Indiana

POSTAL CODE 46204

COUNTRY US

E-MAIL ADDRESS ggrove@dnr.in.gov

ONLINE RESOURCE

LOCATION www.in.gov/dnr/water/7256.htm

FUNCTION PERFORMED download

[Hide Contact information ▲](#)

[Hide Process step ▲](#)

SOURCE DATA ►

DESCRIPTION

Water well records from the IDNR-DOW well record database; USGS topography maps; various consultant geotechnical reports

[Hide Source data ▲](#)

[Hide Lineage ▲](#)

Geoprocessing history ►

PROCESS

PROCESS NAME

DATE 2014-10-15 12:07:16

TOOL LOCATION c:\program files\arcgis\desktop10.2\ArcToolbox\Toolboxes\Data Management Tools.tbx\CalculateField

COMMAND ISSUED

CalculateField UNC_Limited_Data_Nonaquifer_Fayette Zone "Limited Aquifer/No Data" VB #

INCLUDE IN LINEAGE WHEN EXPORTING METADATA No

[Hide Geoprocessing history ▲](#)

Distribution ►

DISTRIBUTOR ►

CONTACT INFORMATION

ORGANIZATION'S NAME Indiana Department of Natural Resources Division of Water

INDIVIDUAL'S NAME Glenn E. Grove

CONTACT'S POSITION Resource Assessment Section

CONTACT'S ROLE originator

CONTACT INFORMATION ►

PHONE

VOICE (317) 234-1102

FAX (317) 232-4175

ADDRESS

TYPE both

DELIVERY POINT 402 W Washington Street W264

CITY Indianapolis

ADMINISTRATIVE AREA Indiana

POSTAL CODE 46204
COUNTRY US
E-MAIL ADDRESS ggrove@dnr.in.gov

ONLINE RESOURCE

LOCATION www.in.gov/dnr/water/7256.htm
FUNCTION PERFORMED download

HOURS OF SERVICE

8:15am - 4:15pm M-F except Government Holidays

[Hide Contact information ▲](#)

[Hide Distributor ▲](#)

DISTRIBUTION FORMAT

*NAME Shapefile

TRANSFER OPTIONS

UNITS OF DISTRIBUTION Shapefile
*TRANSFER SIZE 0.251

ONLINE SOURCE

LOCATION http://www.in.gov/dnr/water/7256.htm
DESCRIPTION Data and Maps

[Hide Distribution ▲](#)

Fields ►

DETAILS FOR OBJECT [UNC_Limited_Data_Nonaquifer_Fayette ►](#)

*TYPE Feature Class
*ROW COUNT 8

DEFINITION

No Data Zone

DEFINITION SOURCE

Glenn E. Grove

FIELD FID ►

*ALIAS FID
*DATA TYPE OID
*WIDTH 4
*PRECISION 0
*SCALE 0
*FIELD DESCRIPTION
Internal feature number.
*DESCRIPTION SOURCE
ESRI
*DESCRIPTION OF VALUES
Sequential unique whole numbers that are automatically generated.

[Hide Field FID ▲](#)

FIELD Shape ►

*ALIAS Shape
*DATA TYPE Geometry
*WIDTH 0
*PRECISION 0

- *SCALE 0
- *FIELD DESCRIPTION
Feature geometry.
- *DESCRIPTION SOURCE
ESRI
- *DESCRIPTION OF VALUES
Coordinates defining the features.

Hide Field Shape ▲

FIELD Zone ►

- *ALIAS Zone
- *DATA TYPE String
- *WIDTH 50
- *PRECISION 0
- *SCALE 0

FIELD DESCRIPTION

In portions of the county, where data is lacking and/or covered by thin or unproductive deposits, potentiometric surface elevation contours have not been extended through these areas and are mapped as no data/ no aquifer zones.

Hide Field Zone ▲

Hide Details for object UNC_Limited_Data_Nonaquifer_Fayette ▲

Hide Fields ▲

Metadata Details ►

METADATA LANGUAGE English (UNITED STATES)
METADATA CHARACTER SET utf8 - 8 bit UCS Transfer Format

SCOPE OF THE DATA DESCRIBED BY THE METADATA *dataset
SCOPE NAME *dataset

*LAST UPDATE 2014-11-18

ARCGIS METADATA PROPERTIES

METADATA FORMAT ArcGIS 1.0
METADATA STYLE FGDC CSDGM Metadata
STANDARD OR PROFILE USED TO EDIT METADATA FGDC

CREATED IN ARCGIS FOR THE ITEM 2014-11-18 07:06:57
LAST MODIFIED IN ARCGIS FOR THE ITEM 2014-11-18 07:25:23

AUTOMATIC UPDATES

HAVE BEEN PERFORMED Yes
LAST UPDATE 2014-11-18 07:25:23

ITEM LOCATION HISTORY

ITEM COPIED OR MOVED 2014-11-18 07:06:57
FROM R:\RA_FILES_ONLINE\44_Fayette11172014BK\44_Fayette_County_PSM\UNC_Limited_Data_Nonaquifer_Fayette
TO
\\iotfilp19pw\dnr\dow\common\RA_FILES_ONLINE\44_Fayette\44_Fayette_County_PSM\UNC_Limited_Data_Nonaquifer_Fayette

Hide Metadata Details ▲

Metadata Contacts ►

METADATA CONTACT

ORGANIZATION'S NAME Indiana Department of Natural Resources Division of Water

INDIVIDUAL'S NAME Glenn E. Grove
CONTACT'S POSITION Resource Assessment Section
CONTACT'S ROLE originator

CONTACT INFORMATION ▶

PHONE

VOICE (317) 232-4175

FAX (317) 233-4579

ADDRESS

TYPE both

DELIVERY POINT 402 W Washington Street W264

CITY Indianapolis

ADMINISTRATIVE AREA Indiana

POSTAL CODE 46204

COUNTRY US

E-MAIL ADDRESS ggrove@dnr.in.gov

ONLINE RESOURCE

LOCATION www.in.gov/dnr/water/7256.htm

FUNCTION PERFORMED download

HOURS OF SERVICE

8:15am - 4:15pm M-F except Government Holidays

[Hide Contact information ▲](#)

[Hide Metadata Contacts ▲](#)

Metadata Maintenance ▶

MAINTENANCE

UPDATE FREQUENCY not planned

[Hide Metadata Maintenance ▲](#)

Metadata Constraints ▶

LEGAL CONSTRAINTS

ACCESS CONSTRAINTS other restrictions

OTHER CONSTRAINTS

Access constraints: This metadata file is intended to accompany the subject geospatial set. This file may be updated, and the most recent version is available by contacting the IDNR Division of Water.

[Hide Metadata Constraints ▲](#)

FGDC Metadata (read-only) ▼