

POTENTIOMETRIC SURFACE MAP OF THE UNCONSOLIDATED AQUIFERS OF WHITE COUNTY, INDIANA

White County is located in the northwest section of Indiana, and is bounded by the counties of Tippecanoe, Benton, Jasper, Pulaski, Cass, and Carroll. The majority of the county is situated within the Upper Wabash River Basin with two portions of the county in the northwest corner located within the Kankakee River Basin and two portions within the Middle Wabash River Basin located in the south-southwest section of the county.

The Potentiometric Surface Map (PSM) of the unconsolidated aquifers of White County was mapped by contouring the elevations of 974 static water-levels reported on well records received primarily over a 50 year period. These wells are completed in aquifers at various depths, and typically, under confined conditions (bounded by impermeable layers above and below the water bearing formation). However, some wells were completed under unconfined (not bounded by impermeable layers) settings. The mapped potentiometric surface contours are primarily for the upper 100 feet of the unconsolidated materials and utilize data for wells 100 feet or less in depth. If the shallow data was sparse or unavailable in an area, wells greater than 100 feet in depth were used to complement the mapping.

The potentiometric surface is a measure of the pressure on water in a water bearing formation. Water in an unconfined aquifer is at atmospheric pressure and will not rise in a well above the top of the aquifer, in contrast to groundwater in a confined aquifer which is under hydrostatic pressure and will rise in a well above the top of the water bearing formation.

Static water-level measurements in individual wells used to construct county PSM's are indicative of the water-level at the time of well completion. The groundwater level within an aquifer constantly fluctuates in response to rainfall, evapotranspiration, groundwater movement and pumping. Therefore, measured static water-levels in an area may differ due to local or seasonal variations. Because fluctuations in groundwater are typically small, static water-levels can be used to construct a generalized PSM. As a general rule, but certainly not always, groundwater flow approximates the overlying topography and intersects the land surface at major streams.

Universal Transverse Mercator (UTM) coordinates for the water wells were either physically obtained in the field, determined through address geocoding, or reported on water well records. The location of the majority of the water well records used to make the PSM were field verified. Elevation data were obtained from a digital elevation model. Quality control/quality assurance procedures were utilized to refine or remove data where errors were readily apparent.

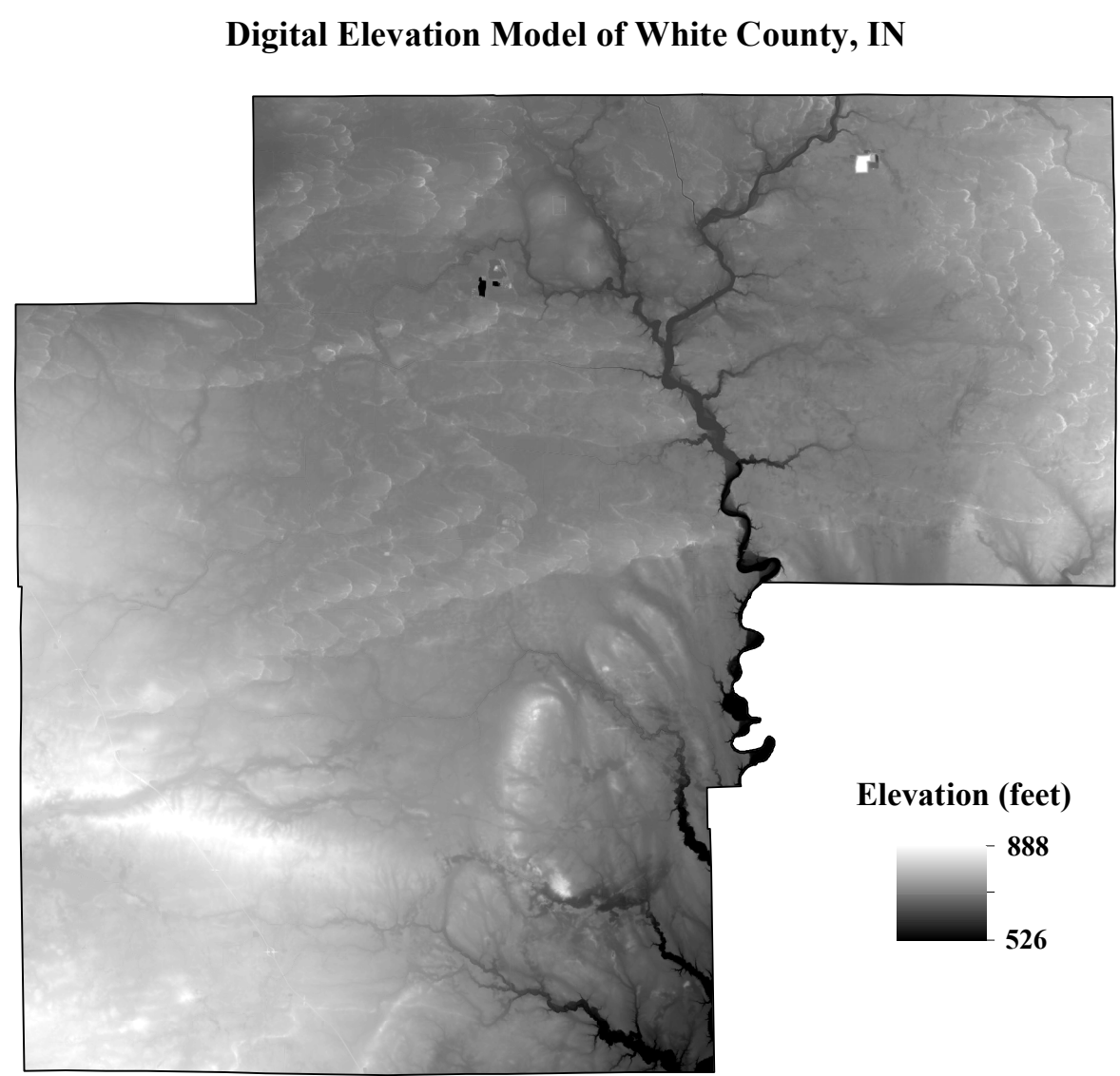
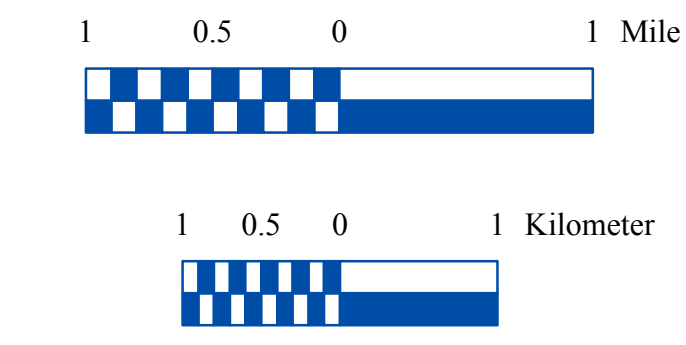
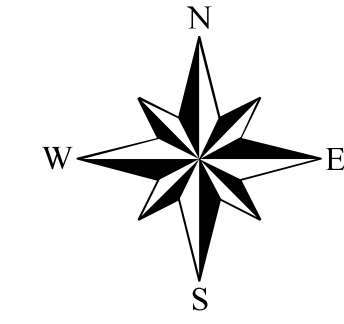
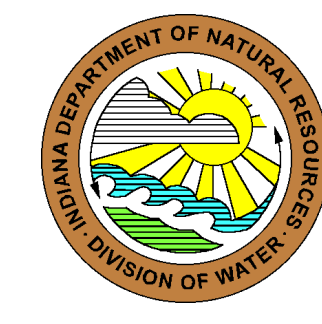
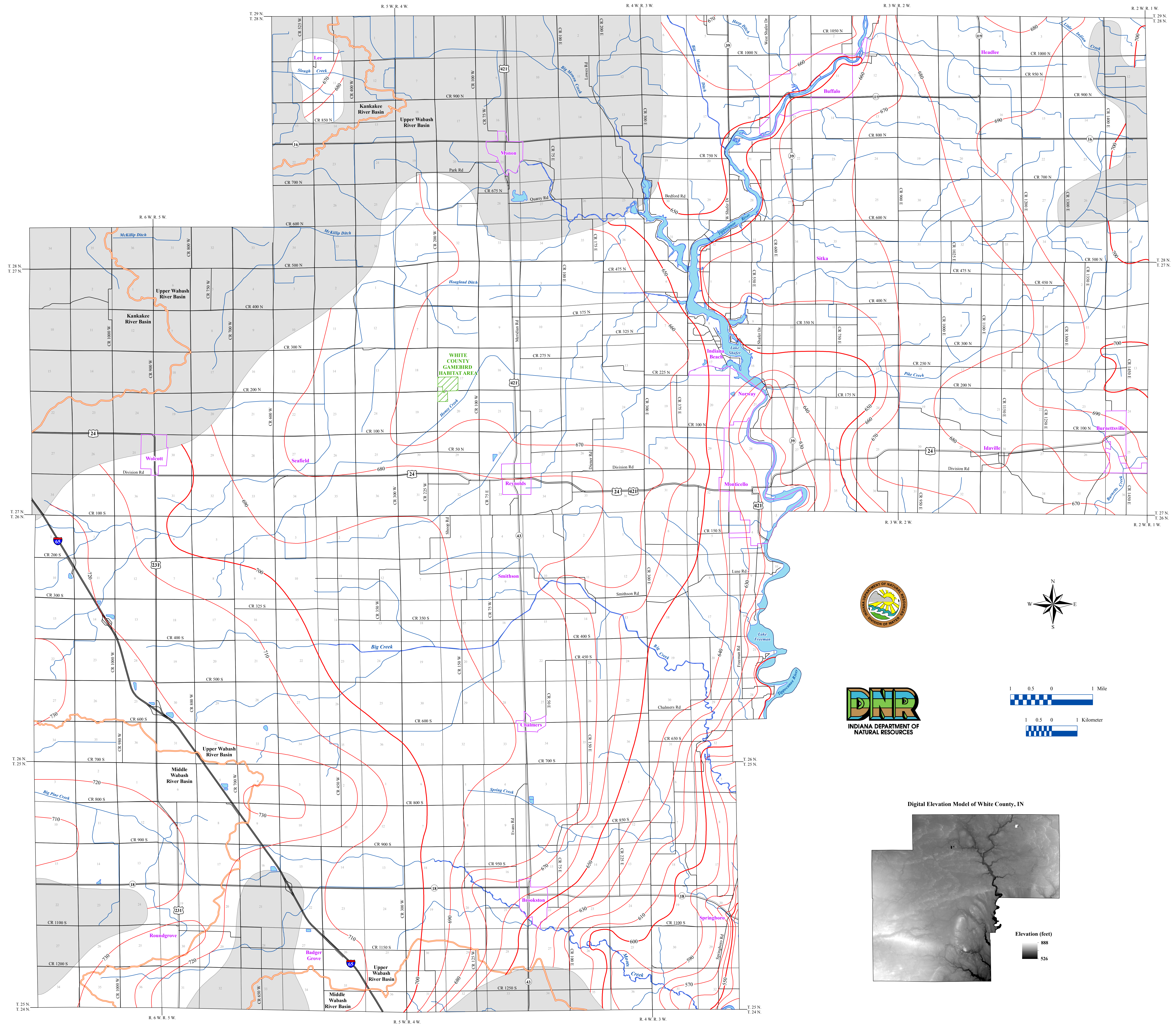
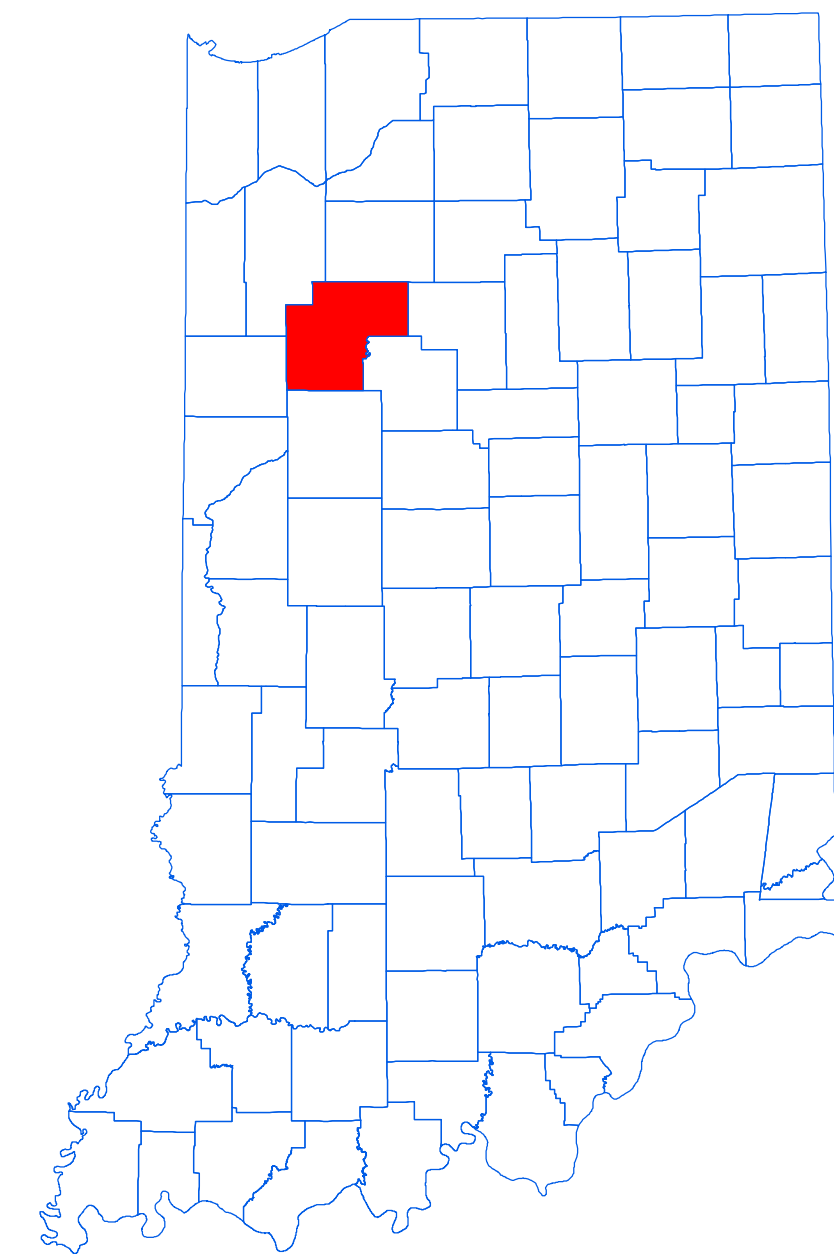
Potentiometric surface elevations range from a high of 730 feet mean sea level (msl) in the southwest portion of the county, to a low of 530 feet msl in the south-central section. Groundwater flow direction within the majority of the county is generally towards the Tippecanoe River and its major tributaries, however, within the Kankakee River Basin, groundwater flow is to the northwest and within the western portion of the Upper Wabash River Basin, groundwater flow is to the west. Potentiometric surface elevation contours are not extending through areas of the county where data is lacking and/or unconsolidated deposits are thin or unproductive.

The county PSM can be used to define the regional groundwater flow path and to identify significant areas of groundwater recharge and discharge. County PSM's represent overall regional characteristics and are not intended to be a substitute for site-specific studies.

EXPLANATION

- Line of equal elevation, in feet above mean sea level
- Potentiometric Surface Contour interval 10 feet
- Stream
- Basin Boundary
- County Road
- State Road
- US Highway
- Interstate
- Municipal Boundary
- DNR Managed Lands
- Lake & River
- No Aquifer Material or Limited Data

Location Map



Map Use and Disclaimer Statement

We request that the following agency be acknowledged in products derived from this map: Indiana Department of Natural Resources, Division of Water.

This map was compiled by staff of the Indiana Department of Natural Resources, Division of Water using data believed to be reasonably accurate. However, a degree of error is inherent in all maps. This product is distributed "as is" without warranties of any kind, either expressed or implied. This map is intended for use only as published scale.

This map has been created from several existing shapefiles. Township and Range Lines of Indiana (line shapefile, 20020621), Land Survey Lines of Indiana (polygon shapefile, 20020621), and County Boundaries of Indiana (polygon shapefile, 20020621) are from the Indiana Geological Survey and based on a 1:24,000 scale. Roads (TIGER and INDOT) (line shapefile, 2005) is from the Indiana Department of Transportation and based on a 1:24,000 scale. Incorporated Boundaries in Indiana (polygon shapefile, 20060501) is from the Graphics and Engineering Section Indiana Department of Transportation. Hydrography, Streams (NHD) (line shapefile, 20081218), Rivers (NHD) (polygon shapefile, 20081218), and Lakes (NHD) (polygon shapefile, 20081218) are from the U.S. Geological Survey and the U.S. Environmental Protection Agency, and based on a 1:24,000 scale. Basin boundaries are modified from the Watershed Boundary Dataset (polygon shapefile, 2008) from the Natural Resource Conservation Service. Managed Lands DNR IN (polygon shapefile, 20100929) is from the Indiana Department of Natural Resources Collection Program (C013). White County Unconsolidated No Aquifer Material or Limited Data (polygon shapefile, Schmidt, 2013), and Potentiometric Surface Map of the Unconsolidated Aquifers of White County, Indiana (line shapefile, Schmidt, 2013) are based on a 1:24,000 scale.

Potentiometric Surface Map of the Unconsolidated Aquifers of White County, Indiana

by
Robert K. Schmidt
Division of Water, Resource Assessment Section

February 2015