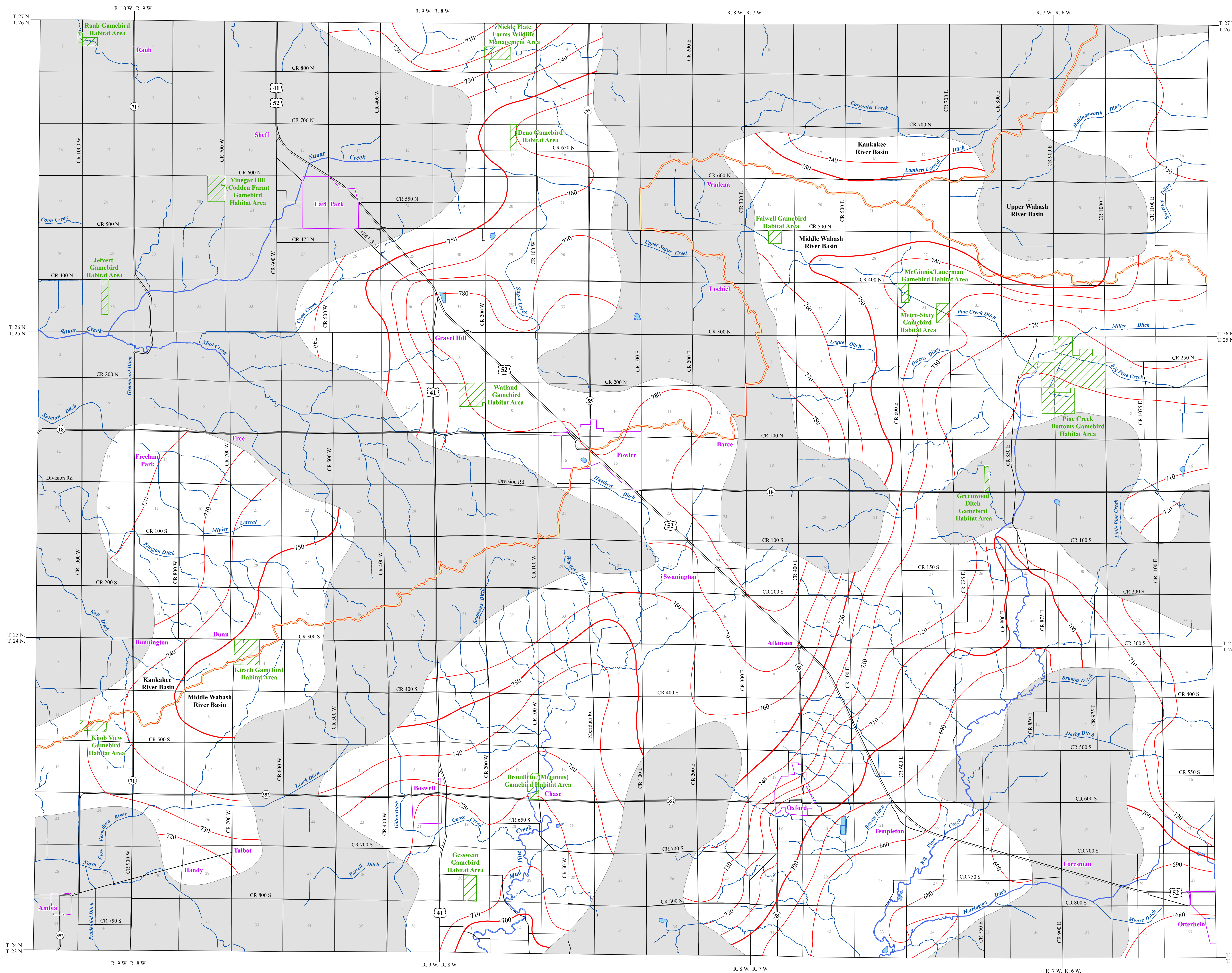


# POTENTIOMETRIC SURFACE MAP OF THE UNCONSOLIDATED AQUIFERS OF BENTON COUNTY, INDIANA



Benton County, Indiana is located in the northwest part of the state and is within the boundaries of three river basins. The county is generally split along a northeast-southwest trending boundary with the northwestern area within the Kankakee River Basin and the southeastern portion within the Middle Wabash River Basin. However, the northeastern area of the county is located in the Upper Wabash River Basin.

The potentiometric surface mapped (PSM) contour elevations represent lines of equal elevation relative to the measured groundwater levels in wells. In general, wells completed in a confined aquifer system are bound by impermeable layers and will have static water levels under hydrostatic pressure causing the water level to rise above the elevation of the aquifer resource. In contrast, an unconfined aquifer system is not bound by impermeable layers, therefore, the water level will not be under hydrostatic pressure and will not rise above the aquifer resource.

Static water level measurements in individual wells used to construct the potentiometric surface map are indicative of the water level at the time of well completion. Therefore, current site specific conditions may differ due to local or seasonal variations in measured static water levels.

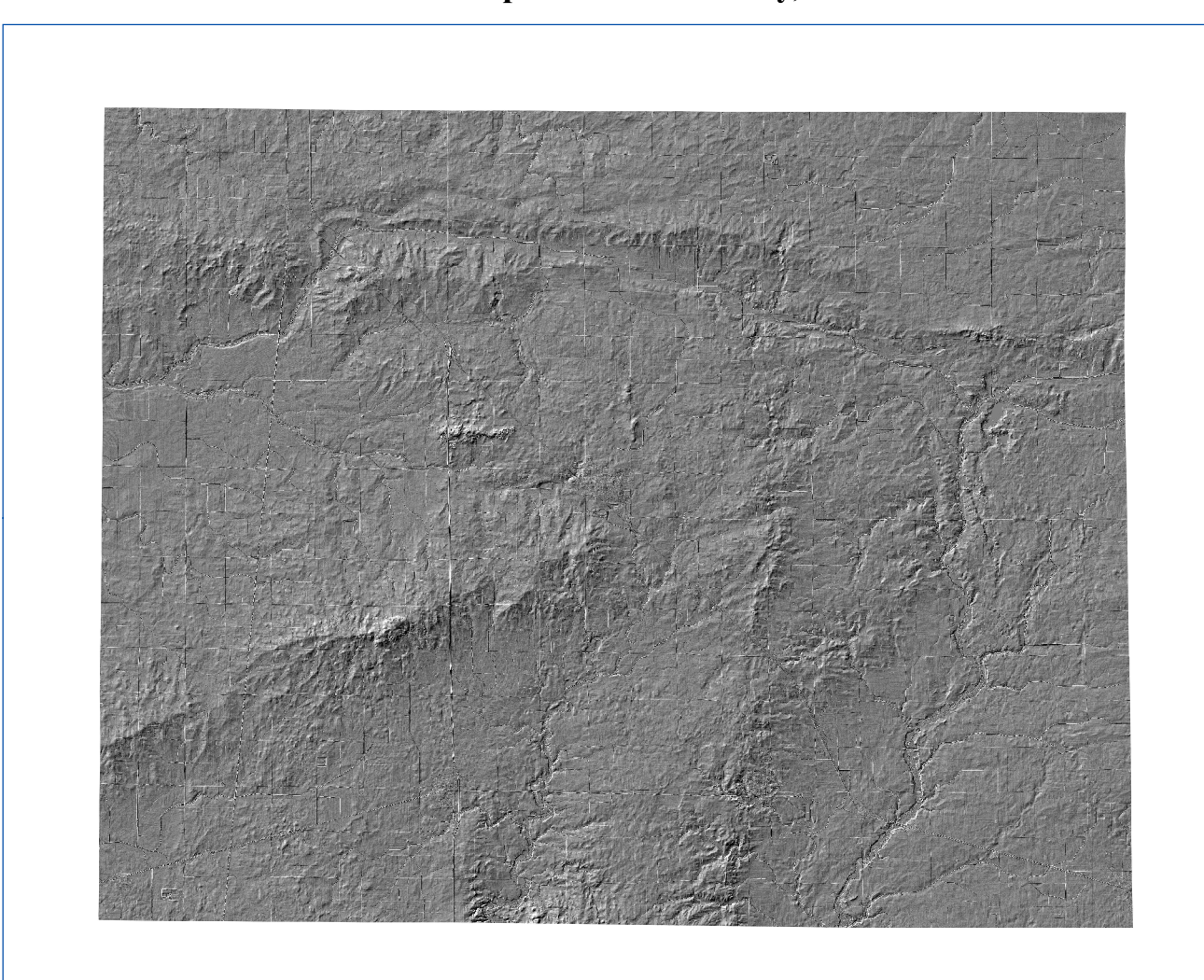
Coordinate locations of water well records were physically obtained in the field, determined through address geocoding, or reported on water well records. Elevation data were obtained from a digital elevation model (DEM). Elevation and location quality control/quality assurance procedures were utilized to refine or remove data where errors were readily apparent.

Well depths 100 feet or less were a priority in mapping the potentiometric surface in Benton County. However, deeper wells were used to complement the mapping in areas where wells at depths of less than 100 feet were sparse. There are 247 unconsolidated located water well records in the county with 176 within the priority depth range.

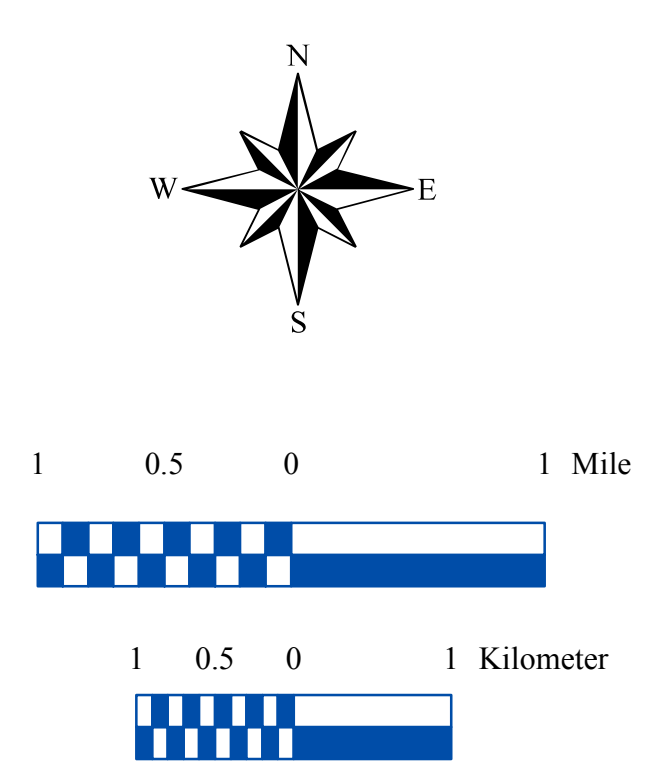
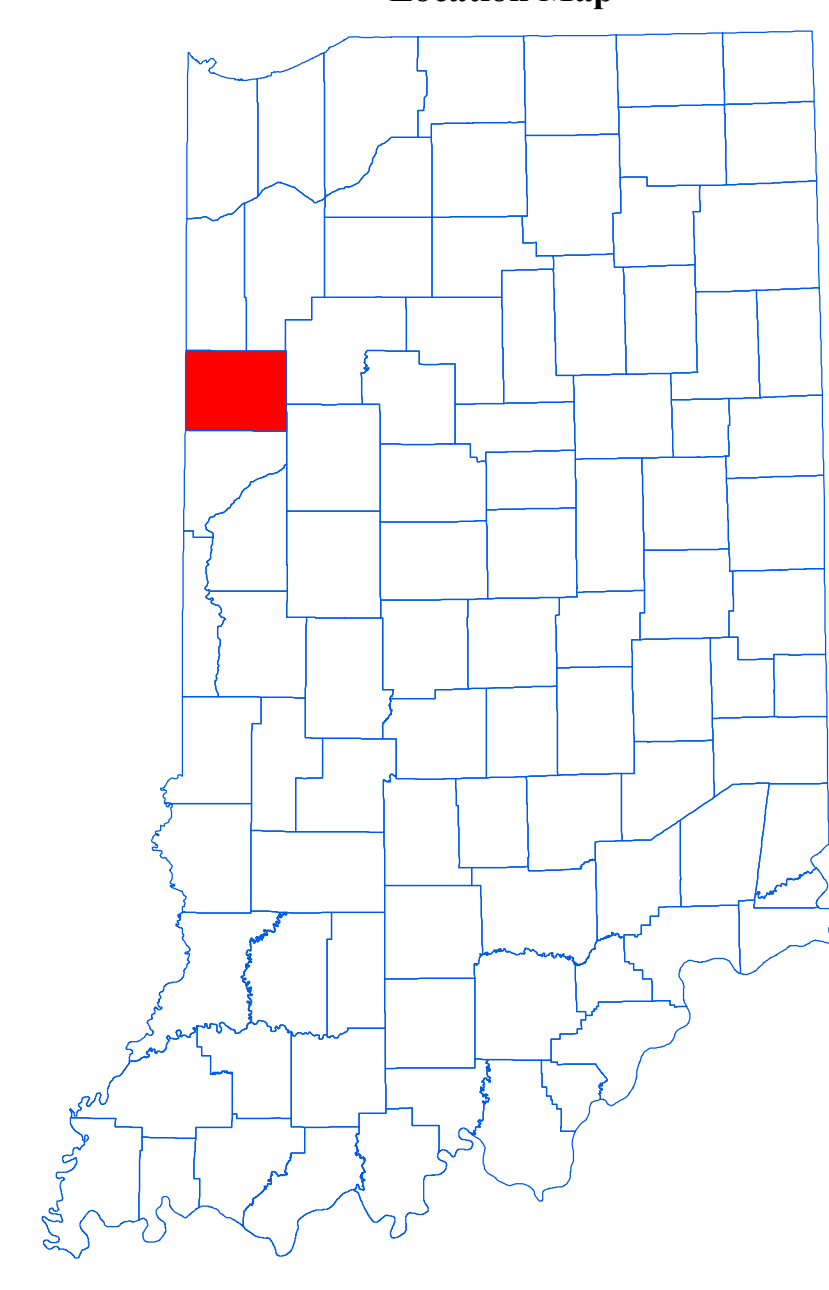
Potentiometric surface elevations range from a high of 780 feet mean sea level (msl) in the central part of the county, to a low of 680 feet msl in the southeast corner and along a portion of Big Pine Creek. Portions of Benton County have limited unconsolidated aquifer potential, therefore, potentiometric contours have not been extended throughout these areas.

Generalized groundwater flow direction for the county is towards major drainage relevant to the basin. Therefore, in the Kankakee River Basin groundwater flow is generally to the northwest; in the Middle Wabash River Basin groundwater flow is to the south-southwest towards Mud Pine Creek and Big Pine Creek; and for the Upper Wabash River Basin, groundwater flow is towards the east.

Hillshade Map of Benton County, Indiana



Location Map



### EXPLANATION

- Line of equal elevation, in feet above mean sea level
- Stream
- Basin Boundary
- County Road
- State Road
- US Highway
- Municipal Boundary
- DNR Managed Lands
- Lake & River
- No Aquifer Material or Limited Data

**Map Use and Disclaimer Statement**  
We request that the following agency be acknowledged in products derived from this map: Indiana Department of Natural Resources, Division of Water.

This map was compiled by staff of the Indiana Department of Natural Resources, Division of Water using data believed to be reasonably accurate. However, a degree of error is inherent in all maps. This product is distributed "as is" without warranties of any kind, either expressed or implied. This map is intended for use only at the published scale.

This map is created from several existing shapefiles: Township and Range Lines of Indiana (line shapefile, 20020621); Land Survey Lines of Indiana (polygon shapefile, 20020621); and County Boundaries of Indiana (polygon shapefile, 20020621), all from the Indiana Geological Survey and based on a 1:24,000 scale. Roads (CTGR and INDOT) (line shapefile, 2005) is from the Indiana Department of Transportation and based on a 1:100,000 scale. System (line shapefile, 2003) is from the Indiana Department of Transportation and based on a 1:24,000 scale. Incorporated Boundaries in Indiana (polygon shapefile, 20060501) is from the Graphics and Engineering Section, Indiana Department of Transportation. Hydrography, Streams (NHDI) (line shapefile, 20081210), Rivers (NHDI) (polygon shapefile, 20081210), and Lakes (NHDI) (polygon shapefile, 20081210) are from the U.S. Geological Survey and based on a 1:24,000 scale. Basin boundaries are modified from Watershed Boundary Dataset (polygon shapefile, 2008) from the Natural Resource Conservation Service and based on a 1:24,000 scale. Managed Lands (DNR) (polygon shapefile, 20100920) is from the Indiana Department of Natural Resources and based on a 1:24,000 scale. Digital Elevation Model image is derived from the Indiana Ortho-EDAR Statewide Collection Program (2013). Benton County Unconsolidated No-Aquifer Material or Limited Data (polygon shapefile, Maier, 2015) and Potentiometric Surface Contours of the Unconsolidated Aquifers of Benton County, Indiana (line shapefile, Maier, 2015) are based on a 1:24,000 scale.

**Potentiometric Surface Map of the Unconsolidated Aquifers of Benton County, Indiana**  
by  
Randal D. Maier  
Division of Water, Resource Assessment Section  
January 2015