

POTENTIOMETRIC SURFACE MAP OF THE BEDROCK AQUIFERS OF FOUNTAIN COUNTY, INDIANA

Fountain County, Indiana is located in the west central portion of the state bounded by Warren, Tippecanoe, Montgomery, Parke, and Vermillion Counties to the southwest, northeast, southeast, south, and southwest, respectively. The entire county is situated within the Middle Wabash River Basin.

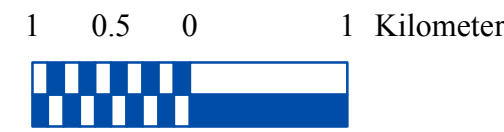
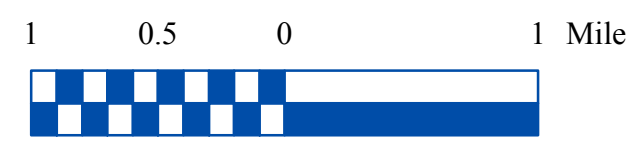
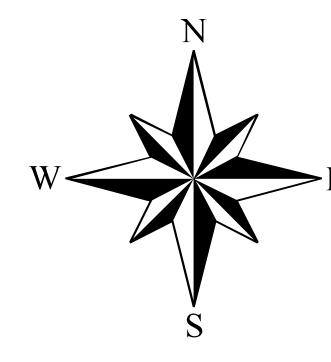
The Bedrock Potentiometric Surface Map (PSM) of Fountain County is mapped by contouring the elevations of 894 static water levels reported on well records received primarily over a 50-year period. These wells are completed in bedrock aquifers at various depths and typically under confined conditions (bounded by impermeable layers above and below the water bearing formation). However, some wells are completed in unconfined settings with water bearing formations not bounded by impermeable layers. The potentiometric surface is a measure of the pressure on water in a water bearing formation, or aquifer. The groundwater level in an unconfined aquifer system is at atmospheric pressure and will not rise in a well above the top of the aquifer formation. The potentiometric surface in most wells completed in bedrock within Fountain County rises above the top of the bedrock aquifer due to the confining nature of the system.

Static water level measurements in individual wells used to construct county PSMs are indicative of the water level at the time of well completion. The groundwater level within an aquifer constantly fluctuates in response to rainfall, evapotranspiration, groundwater movement, and pumping. Therefore, current site-specific conditions may differ due to local or seasonal variations in measured static water levels. Because fluctuations in groundwater are typically small, static water levels can be used to construct a generalized PSM. Groundwater flow is naturally from areas of recharge toward areas of discharge. The contours were determined based on the amount of data and the degree of change in water levels between wells. Bedrock potentiometric surface elevation contours have not been extended across several portions of Fountain County. These areas are either lacking in data or have limited aquifer potential.

Data collected to generate the PSM were standardized and validated for accuracy. Universal Transverse Mercator (UTM) coordinates for the water wells were either physically obtained in the field or determined based on water well records. The location of the majority of the water well records used to make the PSM were field verified. Elevation data were derived from a digital elevation model based on LIDAR. Quality control/quality assurance procedures were utilized to refine or remove data where errors were readily apparent.

Potentiometric surface contours are developed based on the static water levels from the bedrock aquifer systems and displayed here with 10-foot contours and 50-foot index contours. Bedrock potentiometric surface contours in Fountain County range from a high of 740 feet mean sea level (msl) in the east on the Montgomery County border, to a low of 480 feet msl in the southwest portion of the county along the Wabash River. Groundwater flow direction within the bedrock aquifer system is generally to the west toward the Wabash River and its tributaries. Bedrock groundwater flow is influenced by the major drainage in the county discharging to Sugar Mill Creek and Mill Creek in the south, Coal Creek across the central and southwest, and Big Shawnee Creek in northwestern Fountain County. In the southeast corner of the county groundwater flow is east and south.

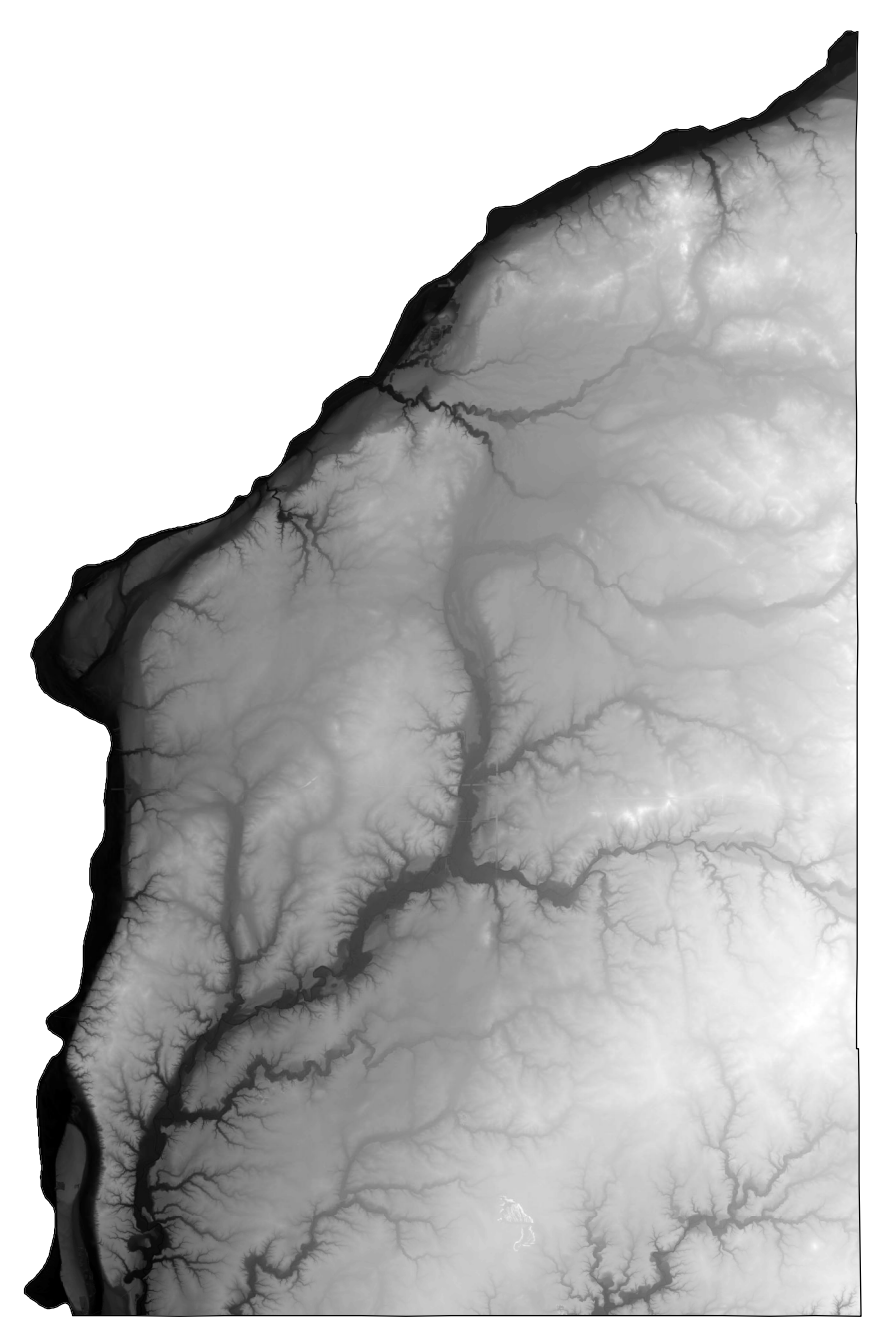
The county PSM can be used to define the regional groundwater flow path and to identify significant areas of groundwater recharge and discharge. County PSMs represent overall regional characteristics and are not intended to be a substitute for site-specific studies.



EXPLANATION

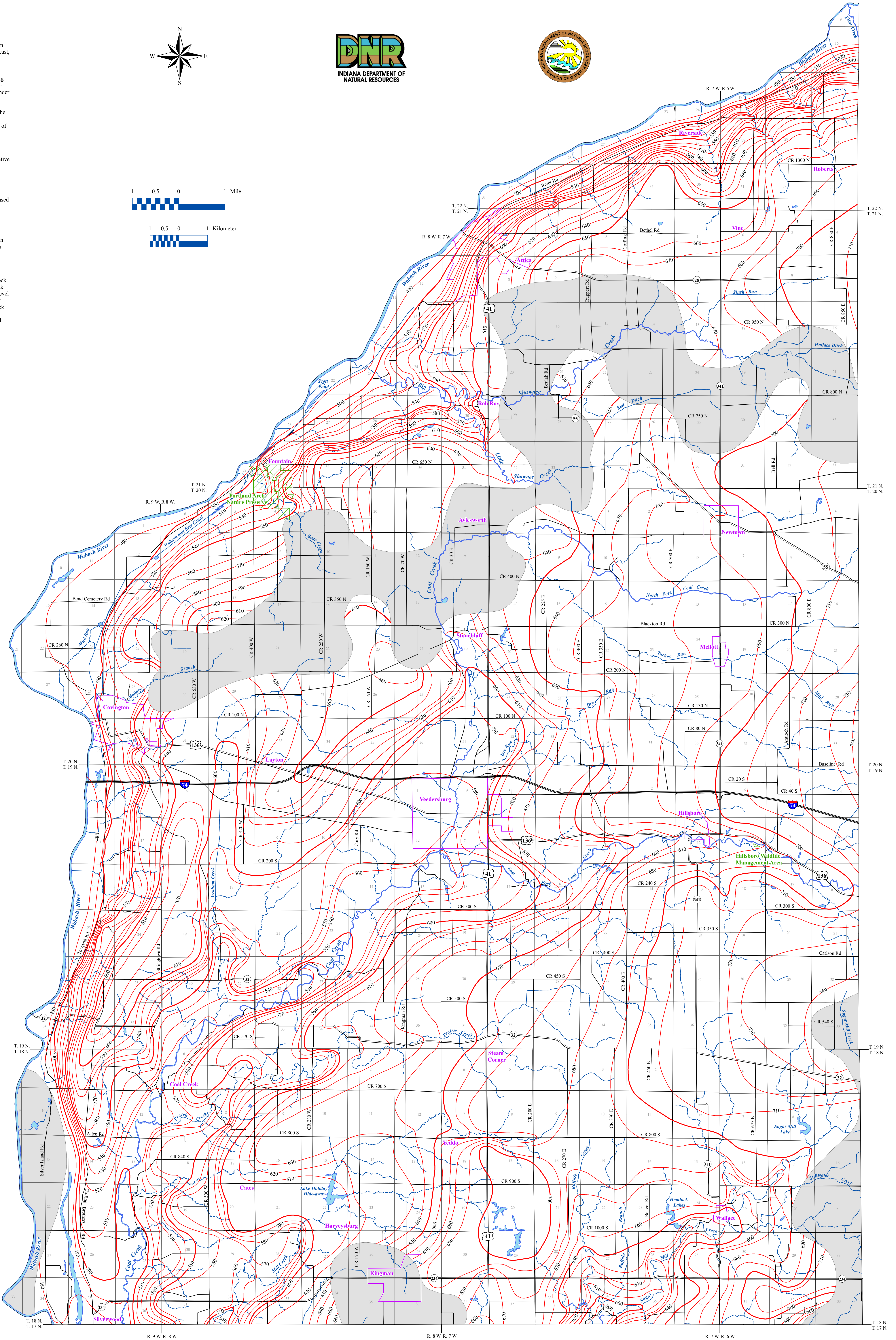
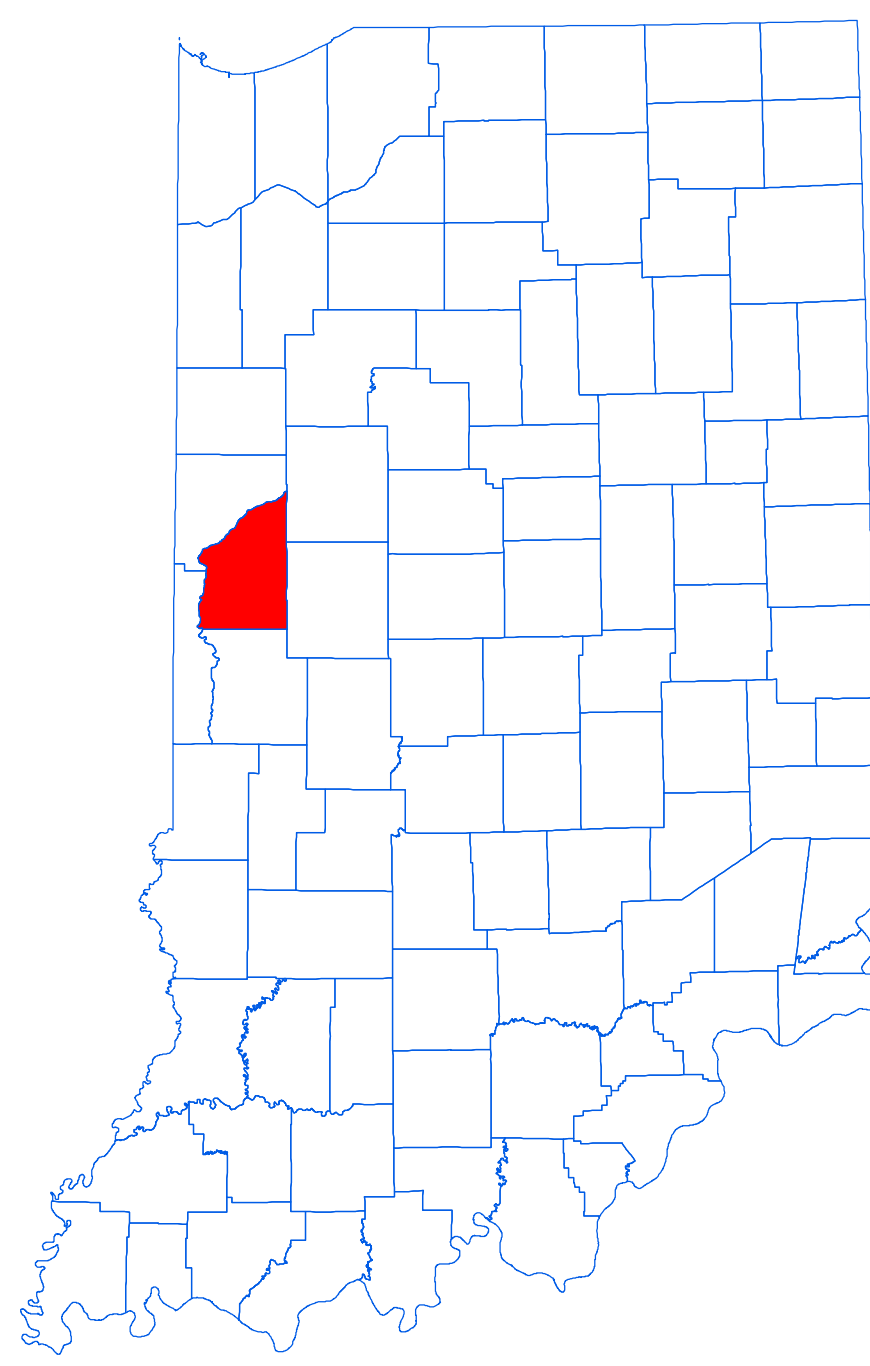
- Line of equal elevation, in feet above mean sea level
- Potentiometric Contour interval 10 feet
- Stream
- County Road
- State Road
- US Highway
- Interstate
- Municipal Boundary
- State Managed Property
- Lake & River
- No Aquifer Material or Limited Data

Digital Elevation Model of Fountain County, Indiana



Elevation (feet)
820
473

Location Map



Map Use and Disclaimer Statement

We request that the following agency be acknowledged in products derived from this map: Indiana Department of Natural Resources, Division of Water.

This map was compiled by staff of the Indiana Department of Natural Resources, Division of Water using data believed to be reasonably accurate. However, a degree of error is inherent in all maps. This product is distributed "as is" without warranties of any kind, either expressed or implied. This map is intended for use only at the published scale.

This map is created from several existing shapefiles. Township and Range Lines of Indiana (line shapefile, 20020621), Land Survey Lines of Indiana (polygon shapefile, 20020621), and County Boundaries of Indiana (polygon shapefile, 20050621) are from the Indiana Geological Survey and based on a 1:24,000 scale. Roads (TIGER and NHD07) (line shapefile, 2005) is from the Indiana Department of Transportation and based on a 1:100,000 scale. System (line shapefile, 2003) is from the Indiana Department of Transportation and based on a 1:24,000 scale. Incorporated Boundaries in Indiana (polygon shapefile, 20060501) is from the Graphics and Engineering Section, Indiana Department of Transportation. Hydrography, Streams (NHD) (line shapefile, 20081218), Rivers (NHD) (polygon shapefile, 20081218), and Lakes (NHD) (polygon shapefile, 20081218) are from the U.S. Geological Survey and based on a 1:24,000 scale. Managed Lands IDNR IN (polygon shapefile, 20100920) is from the Indiana Department of Natural Resources and based on a 1:24,000 scale. Digital Elevation Model image is derived from the Indiana OrthoLIDAR Statewide Collection Program (2013). Fountain County Bedrock No Aquifer Material or Limited Data (polygon shapefile, Korinek, 2015) and Potentiometric Surface Map of the Bedrock Aquifers of Fountain County, Indiana (line shapefile, Korinek, 2015) are based on a 1:24,000 scale.

Potentiometric Surface Map of the Bedrock Aquifers of Fountain County, Indiana

by
Ginger C. Korinek
Division of Water, Resource Assessment Section

July 2015