

POTENTIOMETRIC SURFACE MAP OF THE UNCONSOLIDATED AQUIFERS OF JACKSON COUNTY, INDIANA

Jackson County, Indiana is located in the south-central part of the state and is entirely within the East Fork White River Basin.

The mapped potentiometric surface contours represent lines of equal elevation relative to the measured groundwater levels in wells. In general, wells completed in a confined aquifer system are bound by impermeable layers and will have static water levels under hydrostatic pressure causing the water level to rise above the elevation of the aquifer resource. In contrast, an unconfined aquifer system is not bound by impermeable layers, therefore, the water level will not be under hydrostatic pressure and will not rise above the aquifer resource.

Static water level measurements in individual wells used to construct the potentiometric surface map are indicative of the water level at the time of well completion. Therefore, current site specific conditions may differ due to local or seasonal variations in measured static water levels.

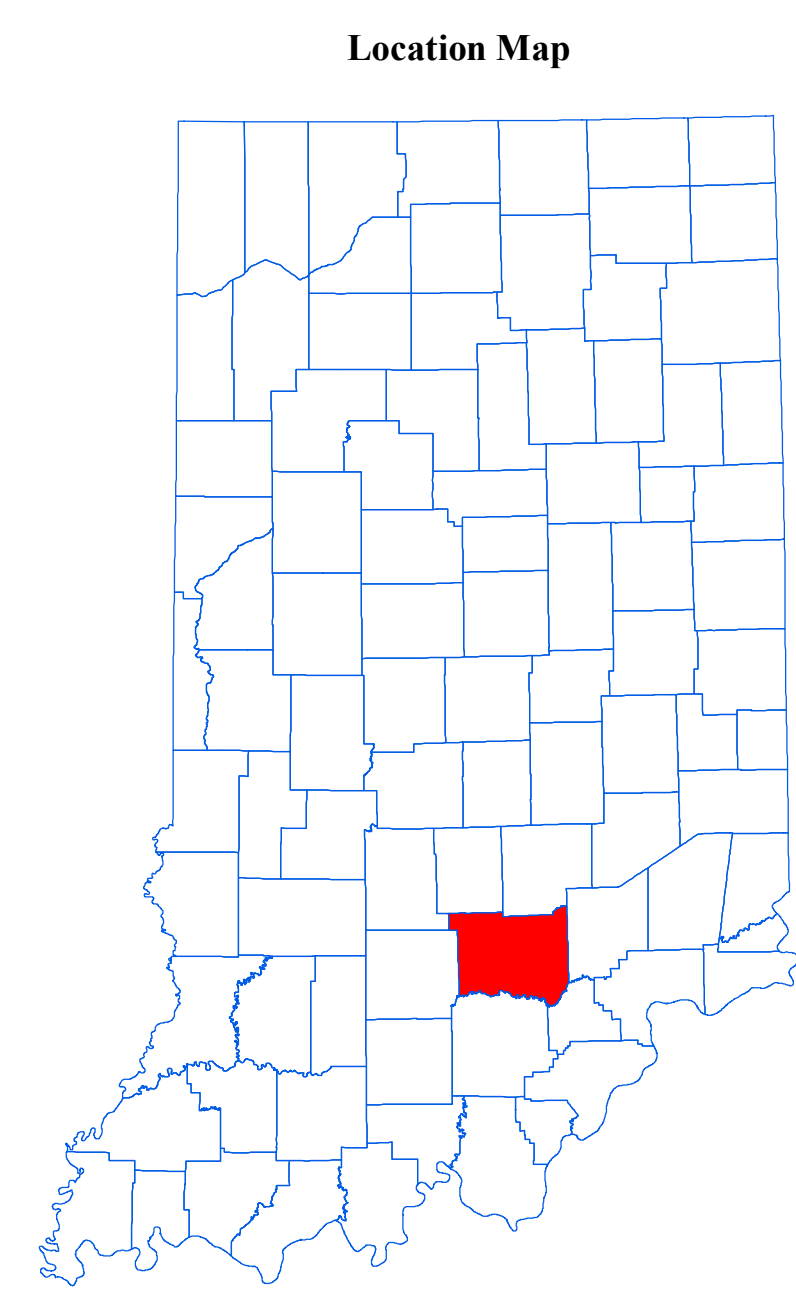
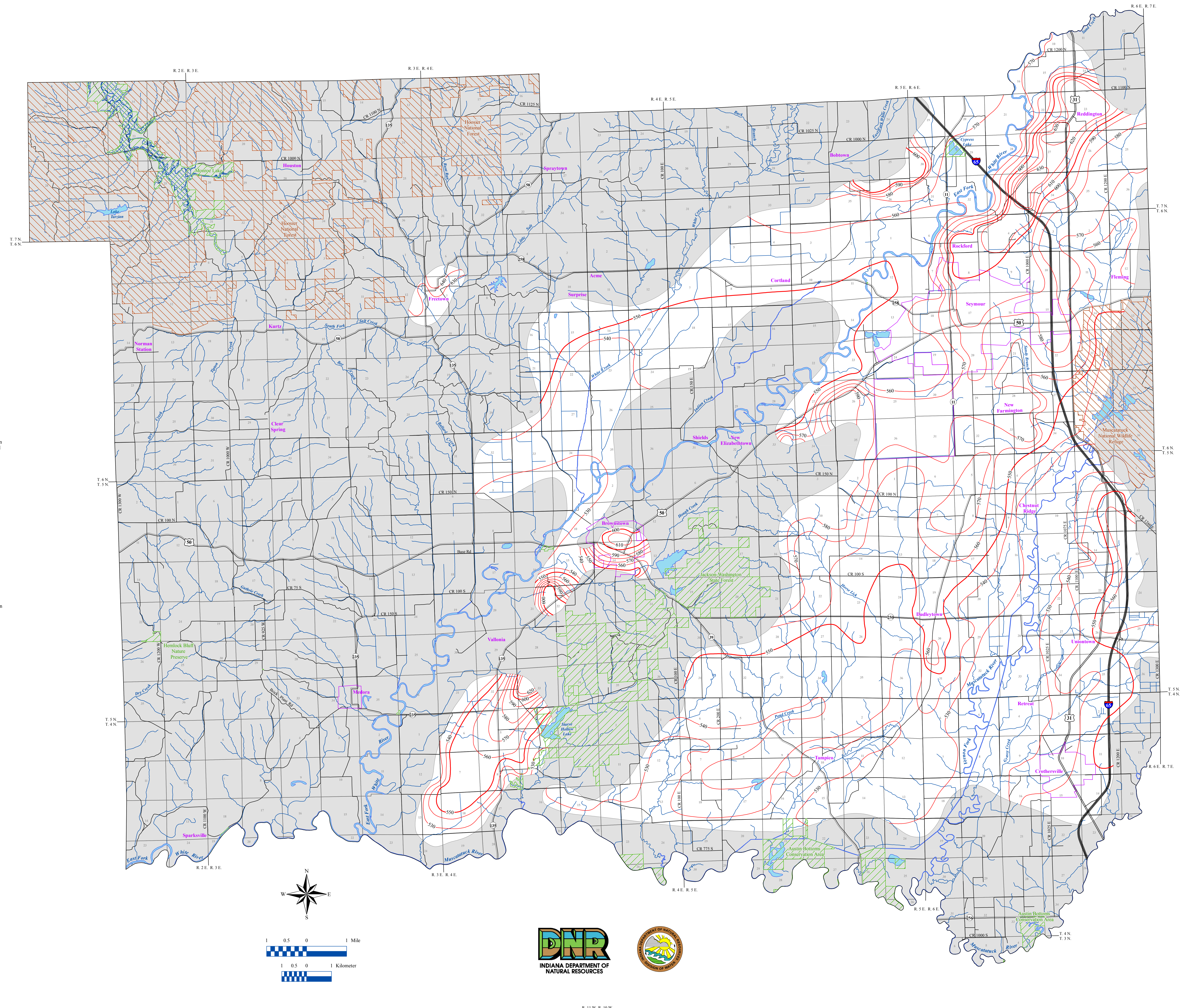
Coordinate locations of water well records were physically obtained in the field, determined through address geocoding, or reported on water well records. Elevation data were obtained from a digital elevation model. Elevation and location quality control/quality assurance procedures were utilized to refine or remove data where errors were readily apparent.

Much of the north-central and western third of Jackson County is extremely limited in unconsolidated aquifer potential. Therefore, potentiometric contours have not been extended throughout these areas.

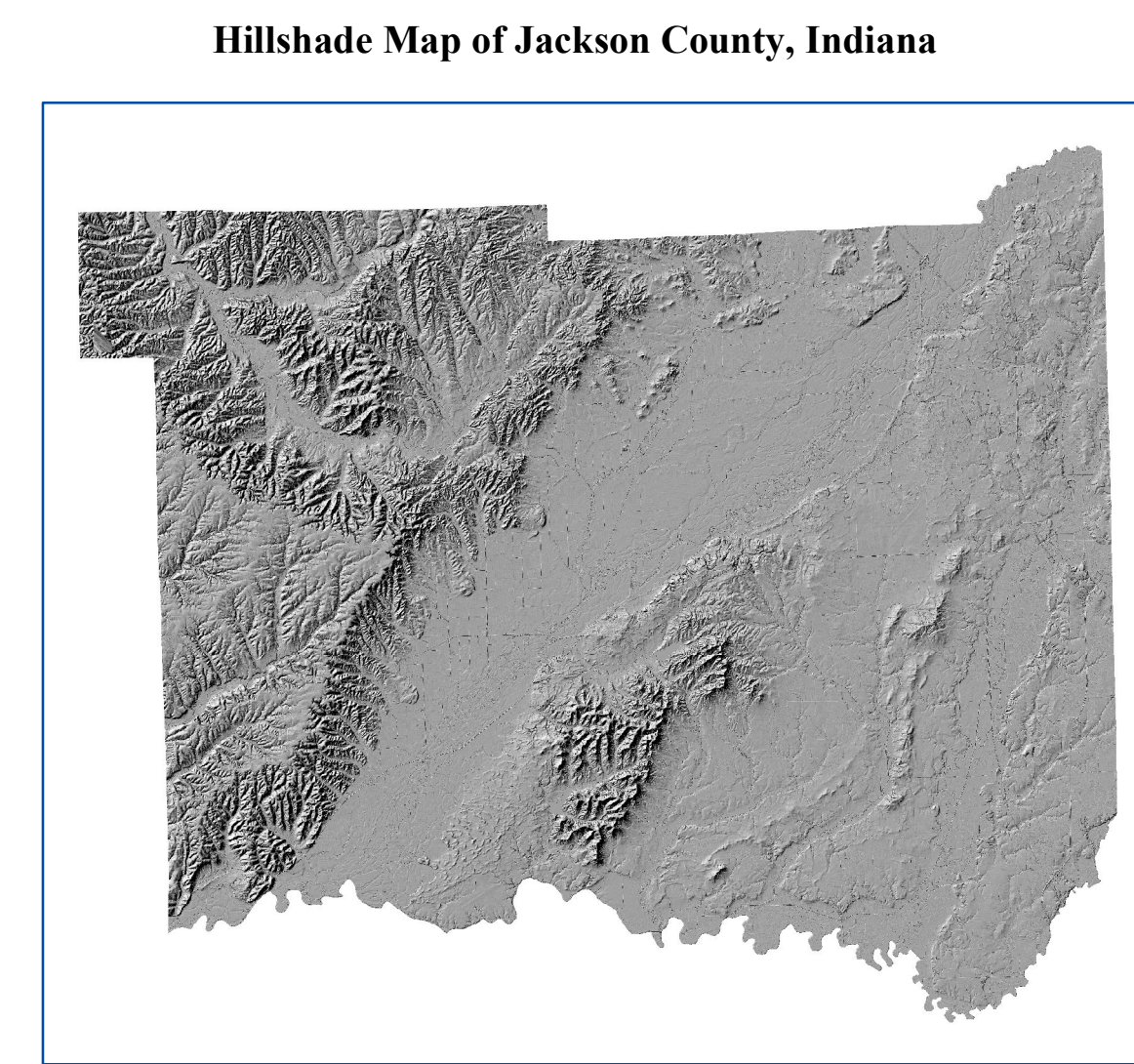
Well depths 100 feet or less were a priority in mapping the potentiometric surface in Jackson County. However, deeper wells were used to complement the mapping in areas where wells at depths of less than 100 feet were sparse. There are 579 located unconsolidated water well records in the county that were utilized towards the mapping of the unconsolidated potentiometric surface.

Potentiometric surface elevations range from a high of 640 feet mean sea level (msl) near Freetown in the north-central portion of Jackson County, to a low of 530 feet msl along the East Fork White River in the central part of the county and along the Muscatuck River in the southeastern part of the county.

Generalized groundwater flow direction for the county is towards major drainage relevant to the basin. Therefore, in Jackson County groundwater flow is towards the East Fork White River and associated tributaries. These include, the Muscatuck River to the south and the Vernon Fork Muscatuck River in the southeast.



- EXPLANATION**
- Line of equal elevation, in feet above mean sea level
 - Potentiometric Contour interval 10 feet
 - Stream
 - County Road
 - State Road
 - US Highway
 - Interstate
 - Municipal Boundary
 - State Managed Property
 - Federal Managed Lands
 - Land Subject to Inundation
 - Lake & River
 - No Aquifer Material or Limited Data



Map Use and Disclaimer Statement

We request that the following agency be acknowledged in products derived from this map: Indiana Department of Natural Resources, Division of Water.

This map was compiled by staff of the Indiana Department of Natural Resources, Division of Water using data believed to be reasonably accurate. However, a degree of error is inherent in all maps. This product is distributed "as is" without warranties of any kind, either expressed or implied. This map is intended for use only at the published scale.

This map is created from several existing shapefiles. Township and Range Lines of Indiana (line shapefile, 20020621), Land Survey Lines of Indiana (polygon shapefile, 20020621), and County Boundaries of Indiana (polygon shapefile, 20020621) are all from the Indiana Geological Survey and based on a 1:24,000 scale. Roads (TIGER and INDOT) (line shapefile, 2005) is from the Indiana Department of Transportation and based on a 1:100,000 scale. System1 (line shapefile, 2003) is from the Indiana Department of Transportation and based on a 1:24,000 scale. Incorporated Boundaries in Indiana (polygon shapefile, 20060901) is from the Graphics and Engineering Section, Indiana Department of Transportation. Hydrography, Streams (NHID) (line shapefile, 20081218), Rivers (NHID) (polygon shapefile, 20081218), and Lakes (NHID) (polygon shapefile, 20081218) are from the U.S. Geological Survey and based on a 1:24,000 scale. Managed Lands: INDR (polygon shapefile, 20100220) is from the Indiana Department of Natural Resources and based on a 1:24,000 scale. The Hillshade image is derived from the Indiana OrthoLEDAAR Statewide Collection Program (2013). Jackson County Unconsolidated/No Aquifer Material or Limited Data (polygon shapefile, Maier, 2017) and Potentiometric Surface Contours of the Unconsolidated Aquifers of Jackson County, Indiana (line shapefile, Maier, 2017) are based on a 1:24,000 scale.

Potentiometric Surface Map of the Unconsolidated Aquifers of Jackson County, Indiana

by
 Randal D. Maier
 Division of Water, Resource Assessment Section

October 2017