

POTENTIOMETRIC SURFACE MAP OF THE UNCONSOLIDATED AQUIFERS OF OHIO COUNTY, INDIANA

Ohio County is located in the southeastern portion of Indiana, and is bounded by the counties of Dearborn, Ripley, and Switzerland to the north, northeast, and south, respectively. The state of Kentucky borders the county to the east. The entire county lies within the Ohio River Basin.

The potentiometric surface is a measure of the pressure on water in a water bearing formation. Water in an unconfined aquifer is at atmospheric pressure and will not rise in a well above the top of the aquifer, in contrast to groundwater in a confined aquifer which is under hydrostatic pressure and will rise in a well above the top of the water bearing formation.

The Potentiometric Surface Map (PSM) of the unconsolidated aquifers of Ohio County is mapped by contouring the elevations of static water-levels reported on well records received primarily over a 50 year period. These wells are completed in aquifers at various depths, and typically, under confined conditions (bounded by impermeable layers above and below the water bearing formation). However, some wells are completed under unconfined (not bounded by impermeable layers) settings. The mapped potentiometric surface contours are primarily for the upper 100 feet of the unconsolidated materials and utilize data for wells 100 feet or less in depth.

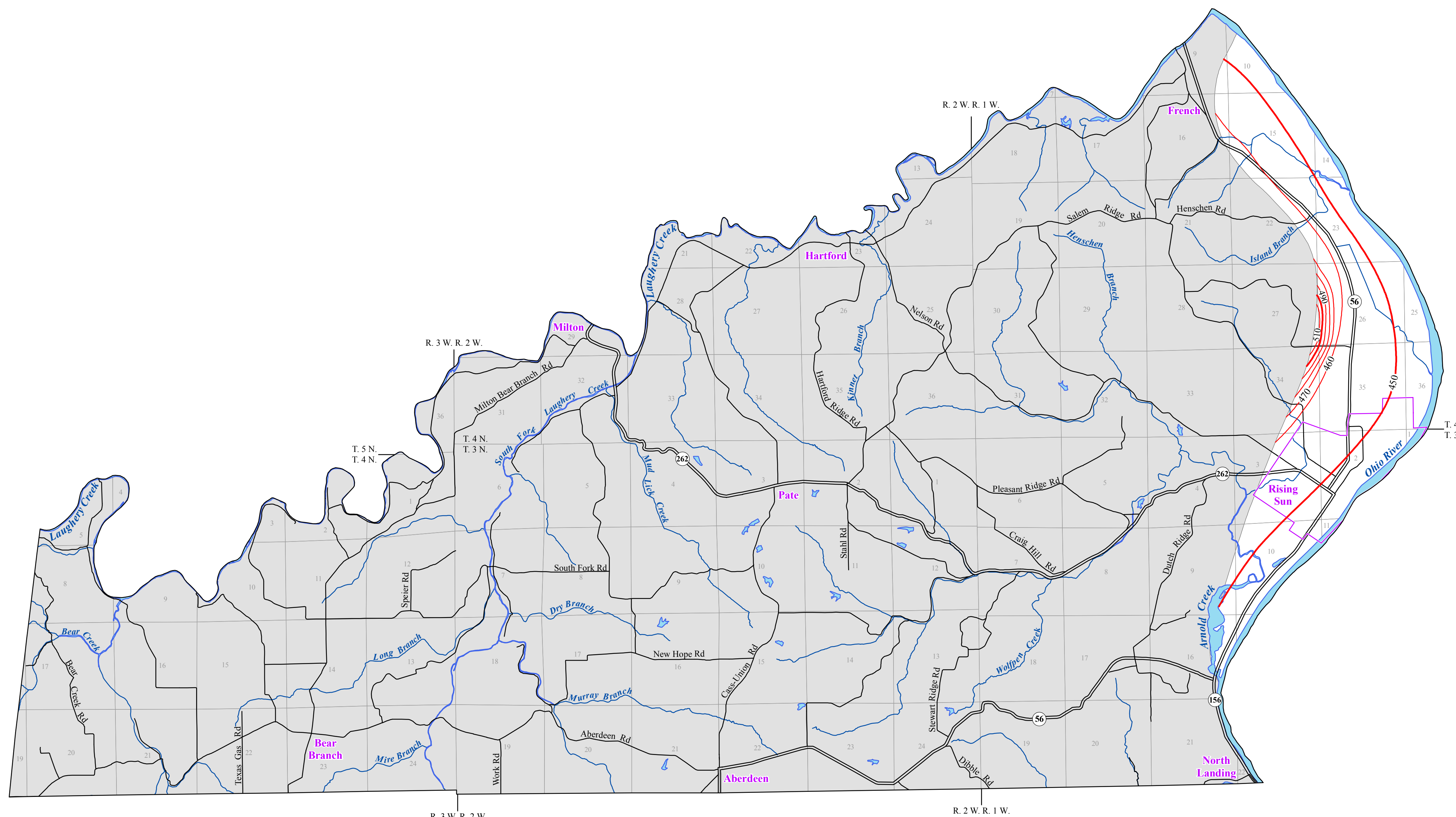
For most of Ohio County, unconsolidated and bedrock aquifers are very limited groundwater resources. According to the Unconsolidated Aquifer Systems of Ohio County map produced by Indiana Department of Natural Resources, Division of Water, the Dissected Till and Residuum Aquifer System makes up the unconsolidated aquifer system covering 89 percent of Ohio County. It can be characterized by thin till deposits with very thin layers of sand and gravel, or thin, eroded bedrock deposits. There are very few reported wells in the county utilizing this aquifer system. The mapped potentiometric contours shown are predominately located in areas with sand and gravel material of the Ohio River Outwash System, which is a more suitable aquifer system to meet the needs of domestic and high-capacity users.

Static water-level measurements in individual wells used to construct county PSM's are indicative of the water-level at the time of well completion. The groundwater level within an aquifer constantly fluctuates in response to rainfall, evapotranspiration, groundwater movement and pumpage. Therefore, measured static water-levels in an area may differ due to local or seasonal variations. Because fluctuations in groundwater are typically small, static water-levels can be used to construct a generalized PSM. As a general rule, but certainly not always, groundwater flow approximates the overlying topography and intersects the land surface at major streams.

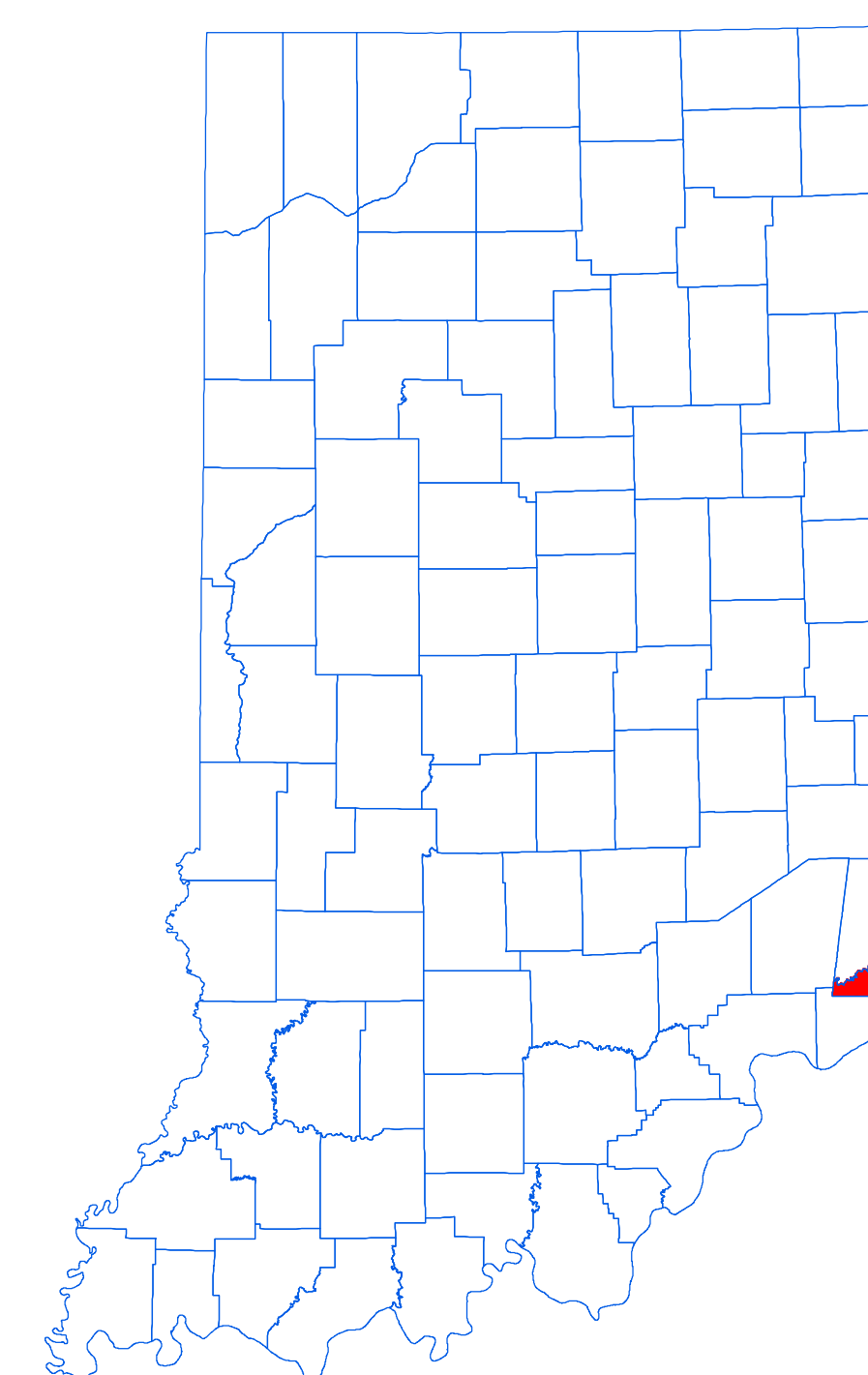
Universal Transverse Mercator (UTM) coordinates for the water wells were either physically obtained in the field, determined through address geocoding, or reported on water well records. The location of the majority of the water well records used to make the PSM were field verified. Elevation data were obtained from a digital elevation model. Quality control/quality assurance procedures were utilized to refine or remove data where errors were readily apparent.

Potentiometric surface elevations range from a high of 510 feet mean sea level (msl) to a low of 450 feet msl in the eastern portion of the county near the Ohio River. Regional groundwater flow direction is generally to the east towards the Ohio River.

The county PSM can be used to define the regional groundwater flow path and to identify significant areas of groundwater recharge and discharge. County PSM's represent overall regional characteristics and are not intended to be a substitute for site-specific studies.



Location Map



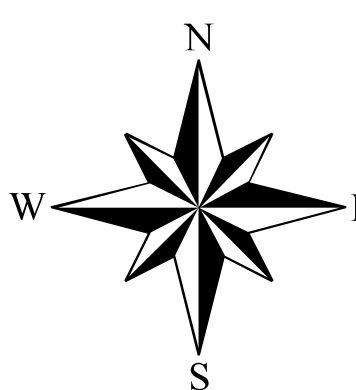
EXPLANATION

- 450 Line of equal elevation, in feet above mean sea level
- Stream
- County Road
- State Road
- Municipal Boundary
- Lake & River
- No Aquifer Material or Limited Data

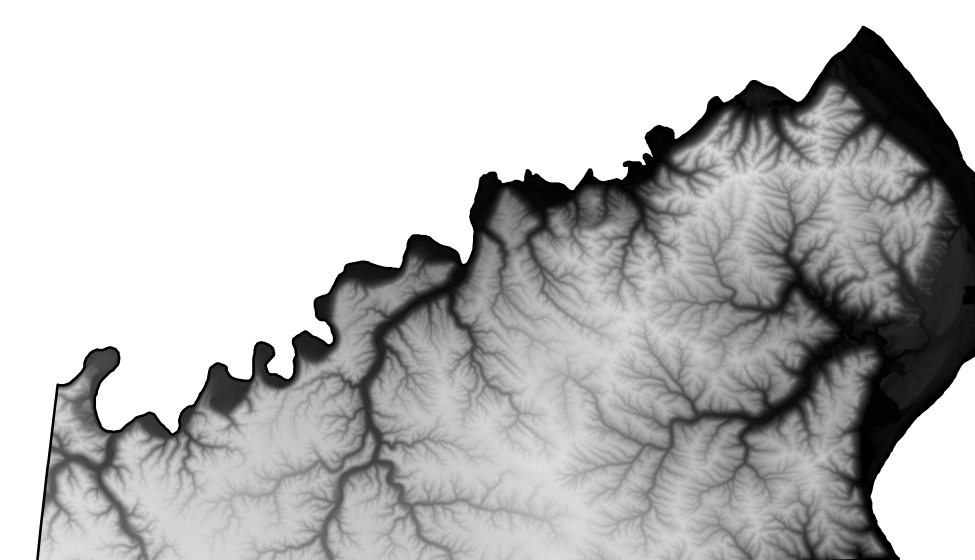
1 0.5 0 1 Mile



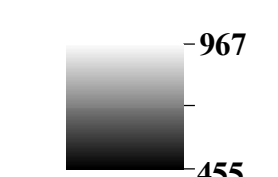
1 0.5 0 1 Kilometer



Digital Elevation Map of Ohio County, Indiana



Elevation (feet)



Map Use and Disclaimer Statement

We request that the following agency be acknowledged in products derived from this map: Indiana Department of Natural Resources, Division of Water.

This map was compiled by staff of the Indiana Department of Natural Resources, Division of Water using data believed to be reasonably accurate. However, a degree of error is inherent in all maps. This product is distributed "as is" without warranties of any kind, either expressed or implied. This map is intended for use only at the published scale.

This map is created from several existing shapefiles. Township and Range Lines of Indiana (line shapefile, 20020621), Land Survey Lines of Indiana (polygon shapefile, 20020621), and County Boundaries of Indiana (polygon shapefile, 20020621) are all from the Indiana Geological Survey and based on a 1:24,000 scale. Roads (TIGER and INDOT) (line shapefile, 2005) is from the Indiana Department of Transportation and based on a 1:100,000 scale. System (line shapefile, 2003) is from the Indiana Department of Transportation and based on a 1:24,000 scale. Incorporated Boundaries in Indiana (polygon shapefile, 20060501) is from the Graphics and Engineering Section, Indiana Department of Transportation. Hydrography, Streams (NHD) (line shapefile, 20081218), Rivers (NHD) (polygon shapefile, 20081218), and Lakes (NHD) (polygon shapefile, 20081218) are from the U.S. Geological Survey and based on a 1:24,000 scale. The Digital Elevation Map image is derived from the Indiana Ortho/LiDAR Statewide Collection Program (2013). Ohio County Unconsolidated No Aquifer Material or Limited Data (polygon shapefile, Cox, 2017) and Potentiometric Surface Contours of the Unconsolidated Aquifers of Ohio County, Indiana (line shapefile, Cox, 2017) are based on a 1:24,000 scale.

Potentiometric Surface Map of the Unconsolidated Aquifers of Ohio County, Indiana

by
Kristiana E. Cox
Division of Water, Resource Assessment Section

November 2017

Map generated by Kristiana E. Cox,
IDNR, Division of Water, Resource Assessment Section