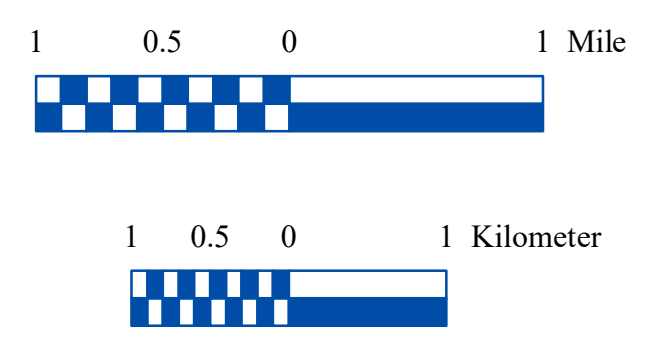
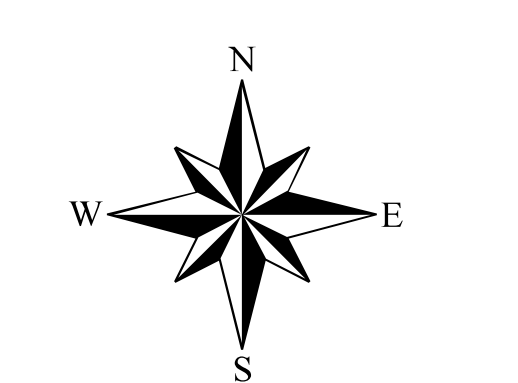
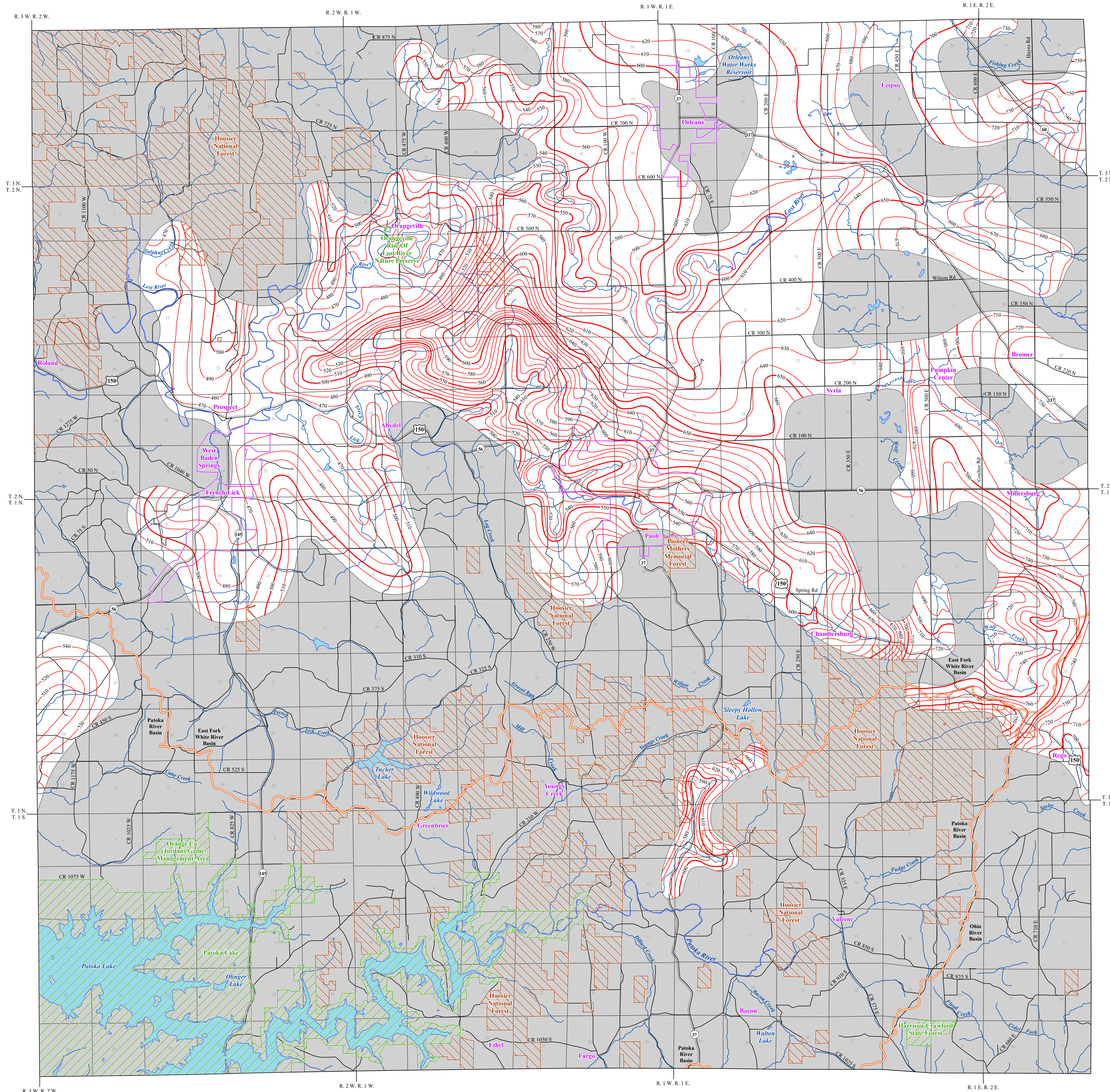
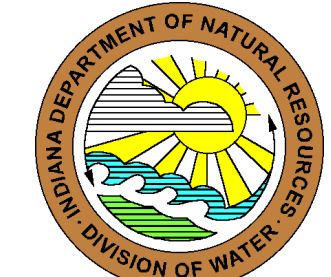


# POTENTIOMETRIC SURFACE MAP OF THE BEDROCK AQUIFERS OF ORANGE COUNTY, INDIANA

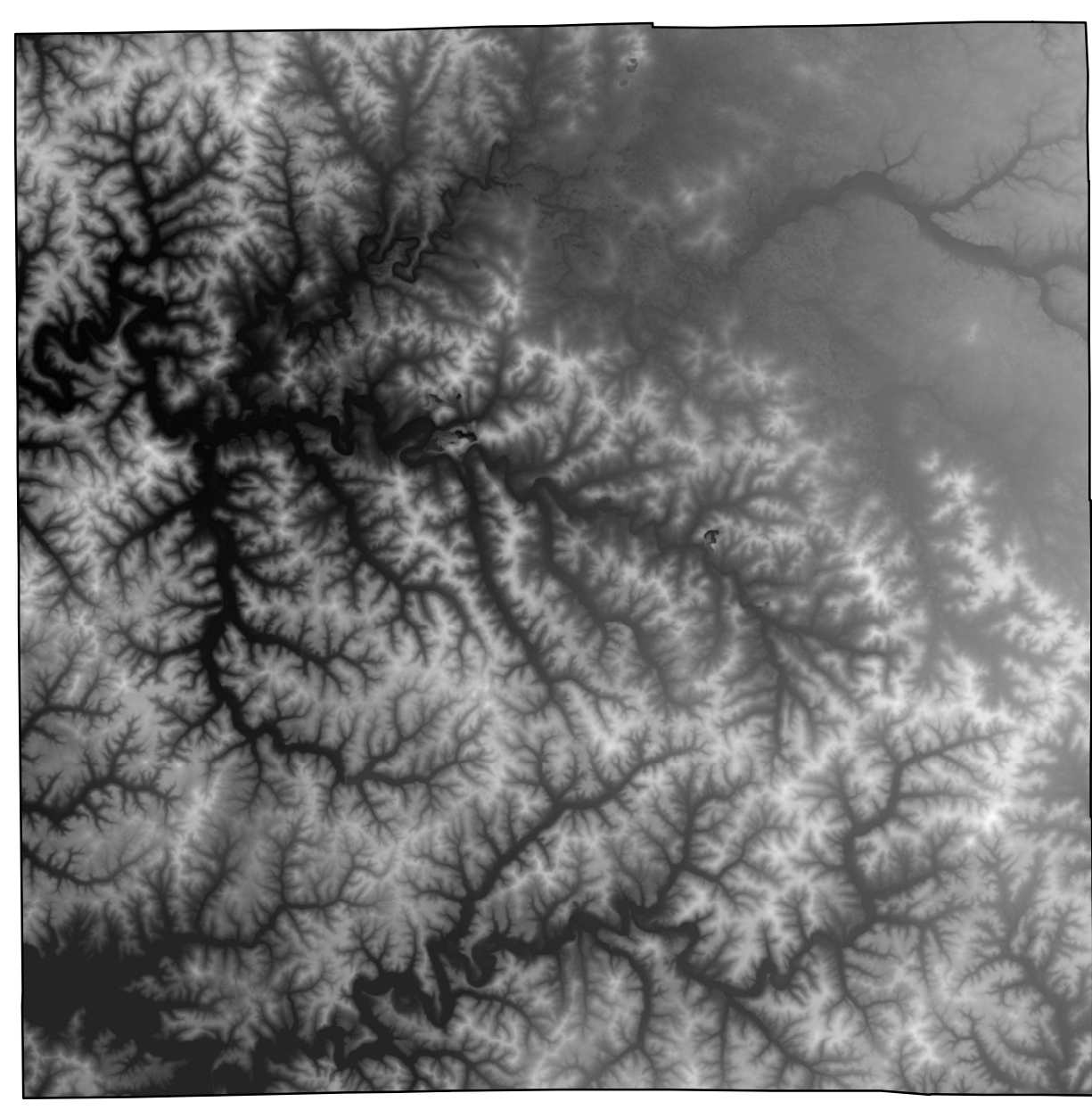


### EXPLANATION

- 500 Line of equal elevation, in feet above mean sea level. Potentiometric Contour interval 10 feet.
- Basin Boundary
- Stream
- County Road
- State Road
- US Highway
- Municipal Boundary
- State Managed Property
- Federal Managed Lands
- Lake & River
- No Aquifer Material or Limited Data



Digital Elevation Model of Orange County, Indiana



### Map Use and Disclaimer Statement

We request that the following agency be acknowledged in products derived from this map: Indiana Department of Natural Resources, Division of Water. This map was compiled by staff of the Indiana Department of Natural Resources, Division of Water using data believed to be reasonably accurate. However, a degree of error is inherent in all maps. This product is distributed "as is" without warranties of any kind, either expressed or implied. This map is intended for use only at the published scale.

This map has been created from several existing shapefiles. Township and Range Lines of Indiana (line shapefile, 20020621), Land Survey Lines of Indiana (polygon shapefile, 20020621), and County Boundaries of Indiana (polygon shapefile, 20020621) are from the Indiana Geological Survey and based on a 1:24,000 scale. Roads (TIGER and NDDOT) (line shapefile, 2005) is from the Indiana Department of Transportation and based on a 1:24,000 scale. System1 (line shapefile, 2003) is from the Indiana Department of Transportation and based on a 1:24,000 scale. Incorporated Boundaries in Indiana (polygon shapefile, 20060501) is from the Graphics and Engineering Section Indiana Department of Transportation. Hydrography, Streams (NHID) (line shapefile, 20081218), Rivers (NHID) (polygon shapefile, 20081218), and Lakes (NHID) (polygon shapefile, 20081218) are from the U.S. Geological Survey and based on a 1:24,000 scale. Basin boundaries are modified from the Watershed Boundary Dataset (polygon shapefile, 2008) developed by the Natural Conservation Service and based on a 1:24,000 scale. Managed Lands IDNR IN (polygon shapefile, 20100920) is from the Indiana Department of Natural Resources and based on a 1:24,000 scale. Digital Elevation Model image is derived from the Indiana OrthoLIDAR Statewide Collection Program (2013). Orange County Bedrock No Aquifer Material or Limited Data (polygon shapefile, Schmidt, 2019), and Potentiometric Surface Map of the Bedrock Aquifers of Orange County, Indiana (line shapefile, Schmidt, 2019) are based on a 1:24,000 scale.

**Potentiometric Surface Map of the Bedrock Aquifers of Orange County, Indiana**  
by  
Robert K. Schmidt  
Division of Water, Resource Assessment Section

August 2019

Map generated by Robert K. Schmidt  
Indiana Department of Natural Resources  
Division of Water, Resource Assessment Section