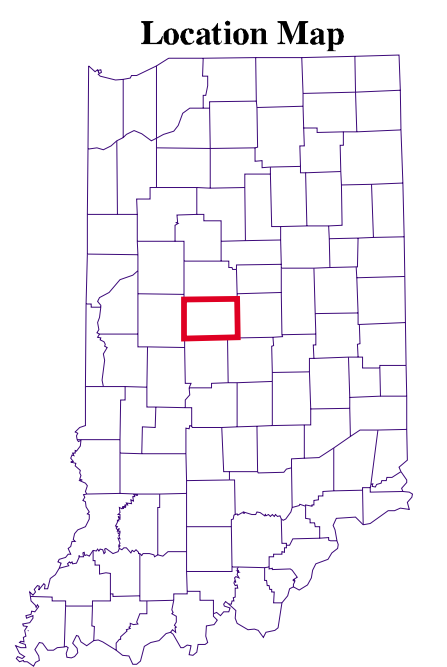
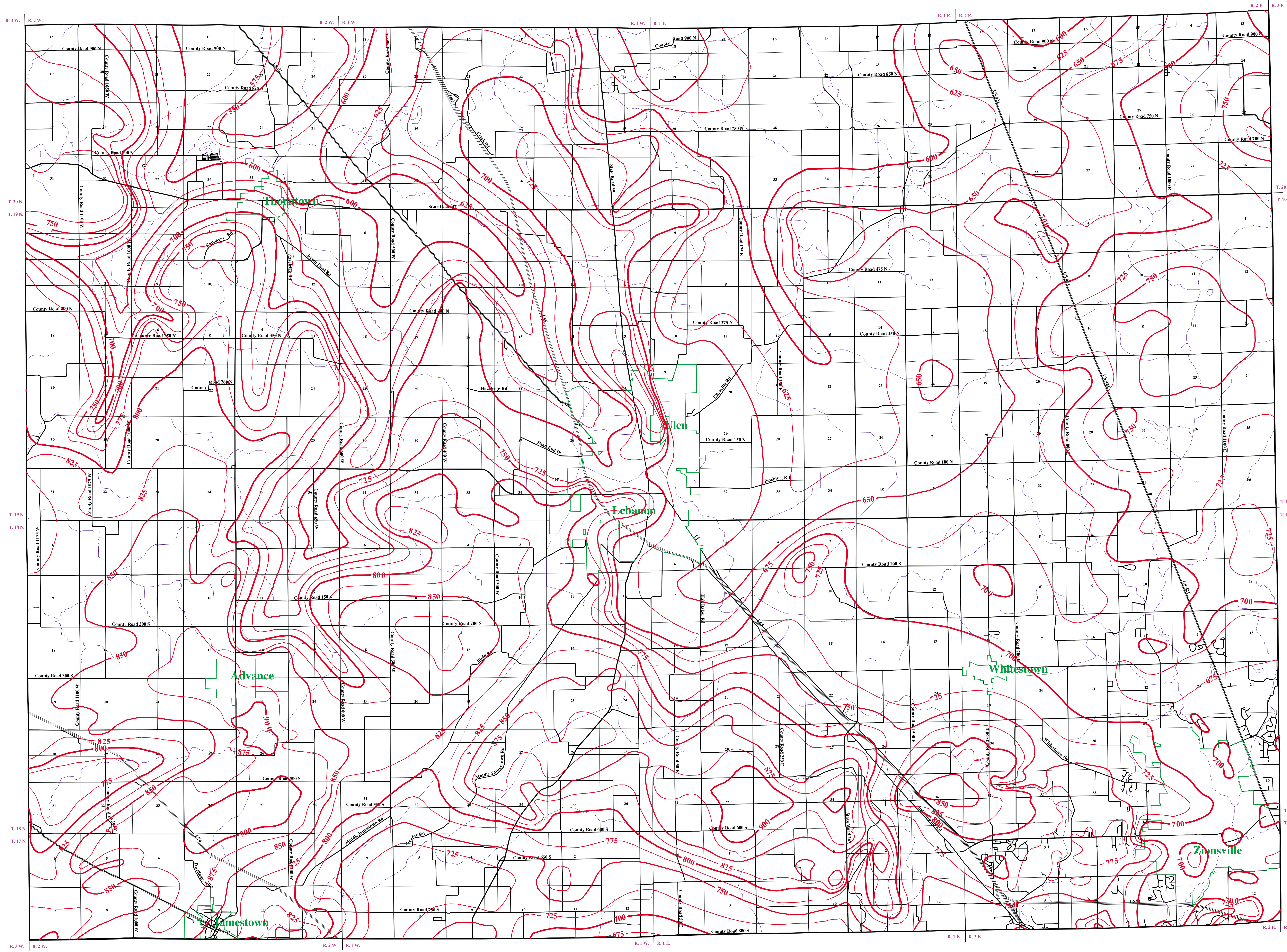


BEDROCK TOPOGRAPHY OF BOONE COUNTY, INDIANA

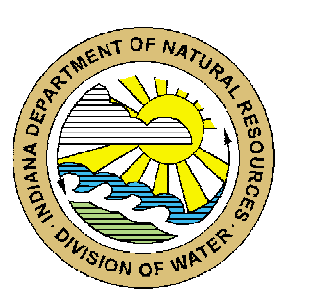
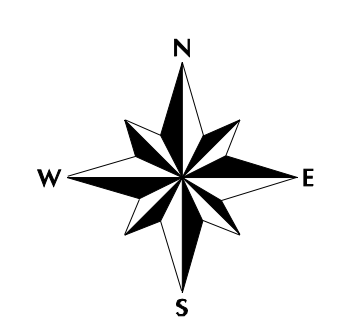
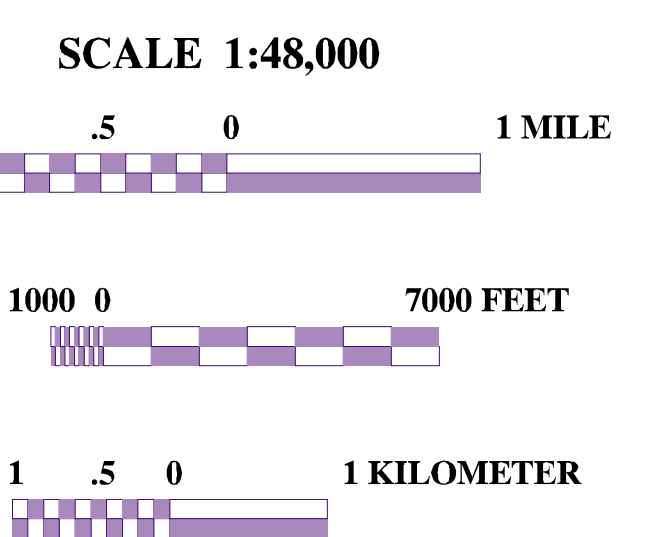


EXPLANATION
Tiger files (2000)
 Interstate Route
 U.S. & State Route
 County Road
 Streams
 Municipal Boundary

Contour Interval 25 feet

Bedrock Topography Map
 This map shows the contours on the surface of the bedrock. This surface is often considered a pre-glacial surface. However, the surface was somewhat modified (eroded) by the earliest continental ice sheets before these glaciers deposited their load of rock, soil, and organic particles ranging in size from boulders to clay. Several later ice sheets overrode the earlier glacial deposits, often partially eroding and reworking them. In Indiana, the unconsolidated materials derived from the glaciers completely "buried" many of the old valleys in the bedrock surface. These buried valleys (also called paleovalleys) in many areas contain relatively thick deposits of sand and gravel that occurred as outwash from melting glaciers. These outwash aquifers were later covered by other ice sheets that left behind layers of clay-rich ground moraine, or till. The sand and gravel aquifers within paleovalleys often have higher potential yields than aquifers in surrounding areas.

Map Use and Disclaimer Statement
 We request that the following agency be acknowledged in products derived from this map: Indiana Department of Natural Resources, Division of Water.
 This map was compiled by staff of the Indiana Department of Natural Resources, Division of Water using data believed to be reasonably accurate. However, a degree of error is inherent in all maps. This product is distributed "as-is" without warranties of any kind, either expressed or implied. This map is intended for use only at the published scale.



Bedrock surface map derived from water well records housed in IDNR/DOW, Ground Water Section, oil and gas well records housed in IDNR/DOG, and seismic data from the Indiana Geological Survey (IGS). Bedrock contouring by Glenn E. Grove (2002), William C. Herring (2002), and Marvin B. Thompson (1999), Ground Water Section, Division of Water, IDNR.

Bedrock Topography of Boone County, Indiana
 by
 Glenn E. Grove, William C. Herring, and Marvin B. Thompson
 July 2002

Map generated by Glenn E. Grove
 IDNR, Division of Water, Ground Water Section
 August 23, 2002

Originally mapped at a scale of 1:24,000 on USGS topographic maps.