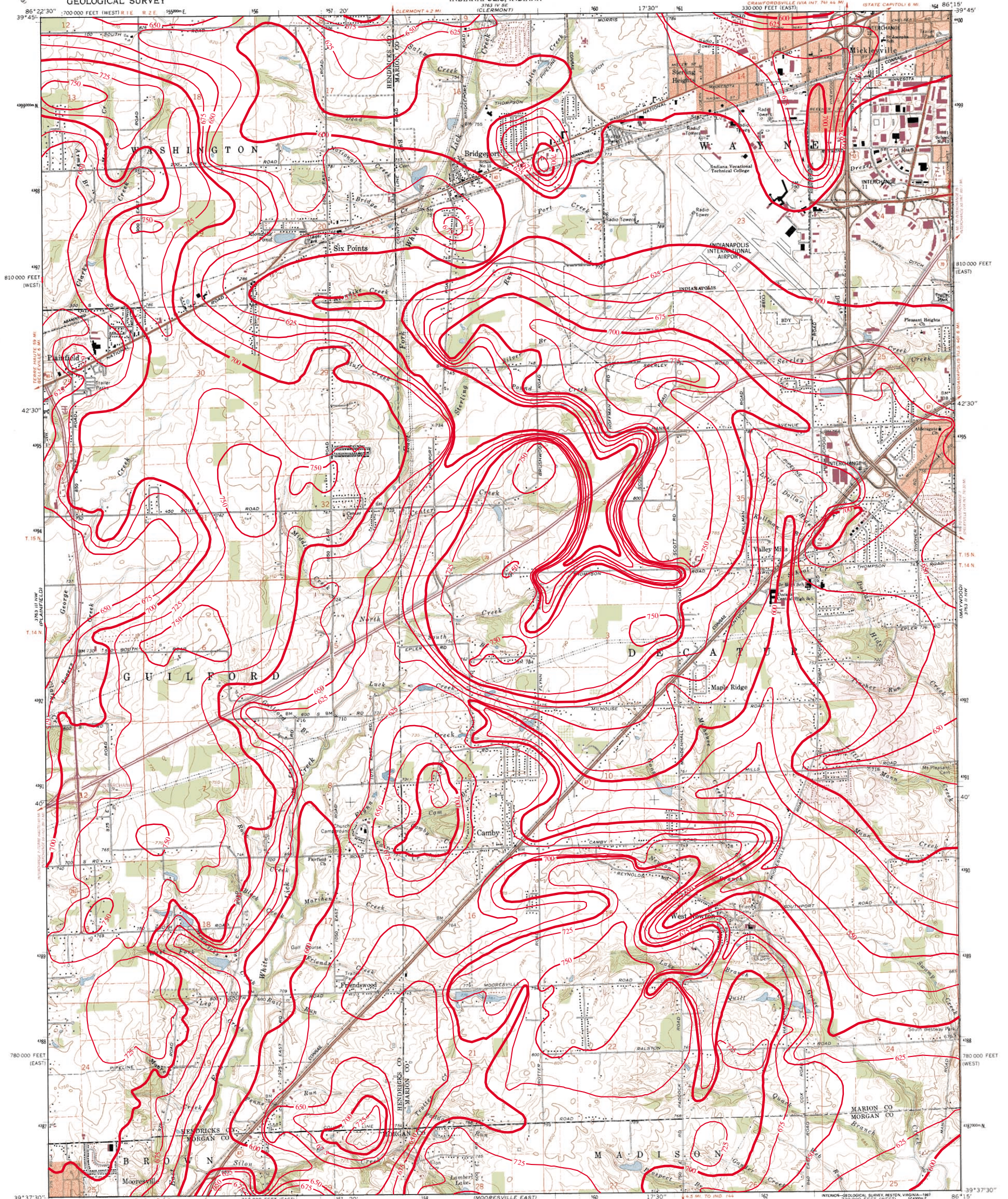


BEDROCK TOPOGRAPHY OF BRIDGEPORT QUADRANGLE, INDIANA

UNITED STATES
DEPARTMENT OF THE INTERIOR
GEOLOGICAL SURVEY

STATE OF INDIANA
DEPARTMENT OF NATURAL RESOURCES
INDIANAPOLIS, INDIANA

BRIDGEPORT QUADRANGLE
INDIANA
7.5 MINUTE SERIES (TOPOGRAPHIC)



Mapped, edited, and published by the Geological Survey

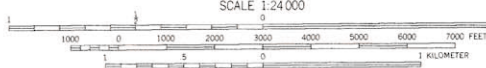
Control by USGS, NOS/NOAA, and Indian Flood Control and Water Resources Commission

Planimetry by photogrammetric methods from aerial photographs taken 1952. Topography by planimetric surveys 1953. Revised from aerial photographs taken 1966. Field checked 1966

Polyconic projection. 10,000-foot grid ticks based on Indiana coordinate system, east and west zones. 1000-meter Universal Transverse Mercator grid ticks, zone 16, shown in blue.

1927 North American Datum. To place on the predicted North American Datum 1983, move the projection lines 1 meter south as shown by dashed corner ticks.

Fine red dashed lines indicate selected fence and field lines where generally visible on aerial photographs. This information is unchecked.



SCALE 1:24,000

CONTOUR INTERVAL 5 FEET
NATIONAL GEODETIC VERTICAL DATUM OF 1929

THIS MAP COMPLIES WITH NATIONAL MAP ACCURACY STANDARDS FOR SALE BY U. S. GEOLOGICAL SURVEY DENVER, COLORADO 80225, OR RESTON, VIRGINIA 22092 AND INDIANA DEPARTMENT OF NATURAL RESOURCES, INDIANAPOLIS, INDIANA 46204 A FOLDER DESCRIBING TOPOGRAPHIC MAPS AND SYMBOLS IS AVAILABLE ON REQUEST

ROAD CLASSIFICATION
Primary highway, all weather, hard surface. Light duty road, all weather, improved surface. Unimproved road, fair or dry weather.

Interstate Route U. S. Route State Route



QUADRANGLE LOCATION

BRIDGEPORT, IND.

39086-F3-TF-024

1966

PHOTOREVISED 1986
DMA 3763 III NE - SERIES V851

Revisions shown in purple and woodland compiled in cooperation with State of Indiana agencies from aerial photographs taken 1983 and other sources. This information not field checked. Map edited 1986. Purple tint indicates extension of urban areas.



Bedrock surface map derived from water well records housed in IDNR/DOW, Ground Water Section, oil and gas well records housed in IDNR/DOG, and seismic data from the Indiana Geological Survey (IGS). Bedrock contouring by Marvin Thompson and William Herring, Ground Water Section, Division of Water, IDNR, 1998. Bedrock contouring in Marion County modified from Fleming and others, 1993.

Map created by Glenn E. Grove
IDNR, Division of Water, Ground Water Section
April 06, 2001

Originally mapped at a scale of 1:24,000 on USGS topographic maps. Bedrock surface contour interval = 25 feet.