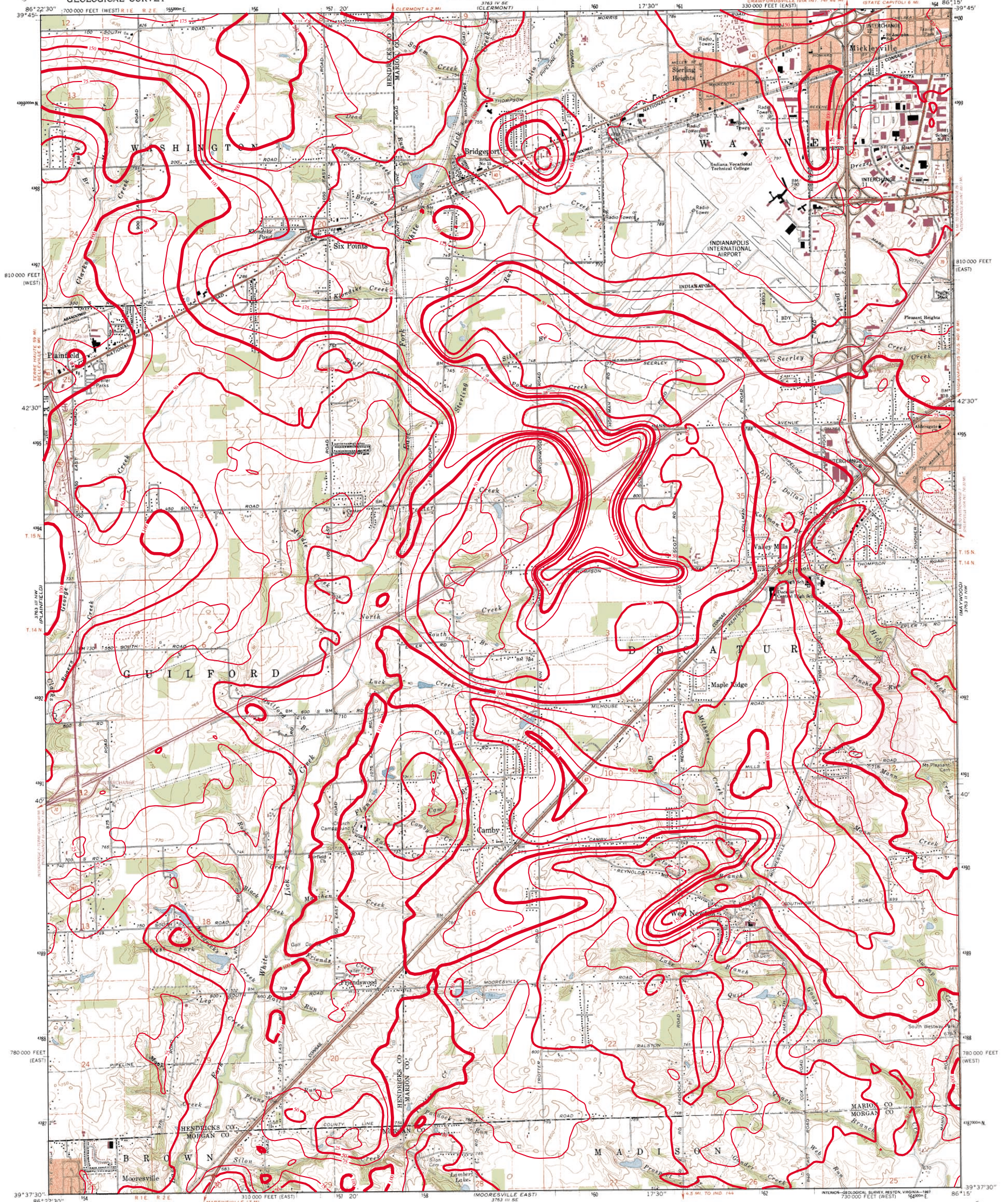


# THICKNESS OF UNCONSOLIDATED DEPOSITS OF BRIDGEPORT QUADRANGLE, INDIANA

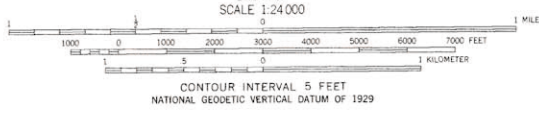
UNITED STATES  
DEPARTMENT OF THE INTERIOR  
GEOLOGICAL SURVEY

STATE OF INDIANA  
DEPARTMENT OF NATURAL RESOURCES  
INDIANAPOLIS, INDIANA

BRIDGEPORT QUADRANGLE  
INDIANA  
7.5 MINUTE SERIES (TOPOGRAPHIC)



Mapped, edited, and published by the Geological Survey  
Control by USGS, NOS/NOAA, and Indian Flood Control  
and Water Resources Commission  
Planimetry by photogrammetric methods from aerial photographs  
taken 1952. Topography by planetable surveys 1953. Revised  
from aerial photographs taken 1966. Field checked 1966  
Polyconic projection. 10,000-foot grid ticks based on  
Indiana coordinate system, east and west zones  
1000-meter Universal Transverse Mercator grid ticks,  
zone 16, shown in blue  
1927 North American Datum  
To place on the predicted North American Datum 1983  
move the projection lines 1 meter south as shown  
by dashed corner ticks  
Fine red dashed lines indicate selected fence and field lines where  
generally visible on aerial photographs. This information is unchecked



ROAD CLASSIFICATION  
Primary highway, all weather, hard surface  
Light-duty road, all weather, improved surface  
Unimproved road, fair or dry weather  
Interstate Route U.S. Route State Route

THIS MAP COMPLIES WITH NATIONAL MAP ACCURACY STANDARDS  
FOR SALE BY U.S. GEOLOGICAL SURVEY  
DENVER, COLORADO 80225, OR RESTON, VIRGINIA 22092  
AND INDIANA DEPARTMENT OF NATURAL RESOURCES, INDIANAPOLIS, INDIANA 46204  
A FOLDER DESCRIBING TOPOGRAPHIC MAPS AND SYMBOLS IS AVAILABLE ON REQUEST

Revisions shown in purple and woodland compiled in cooperation  
with State of Indiana agencies from aerial photographs  
taken 1963 and other sources. This information not field checked  
Map edited 1986  
Purple tint indicates extension of urban areas

BRIDGEPORT, IND.  
39086-F3-TF-024

1966  
PHOTOFOREUSED 1966  
DMA 3763 III NE-SERIES V951



This map was created by Glenn Grove, IDNR, Division of Water, Ground Water Section. The digital elevation grid of the bedrock surface was subtracted from the grid of the land surface and the resultant grid contoured in ArcInfo. The land surface elevation grid is from 1:24,000 scale digital topography by the U.S. Geological Survey, Reston, Virginia, 1999 and 2001. The bedrock surface elevation grid is from a digital map of the bedrock surface topography of Hendricks County. The bedrock surface contouring was done by Marvin Thompson and William Herring, IDNR, Division of Water, Ground Water Section, 1999, at a scale of 1:24,000. The bedrock contouring in Marion County was modified from Fleming and others, 1993.

Map generated by Glenn E. Grove  
IDNR, Division of Water, Ground Water Section  
June 22, 2001

Contour interval = 25 feet.