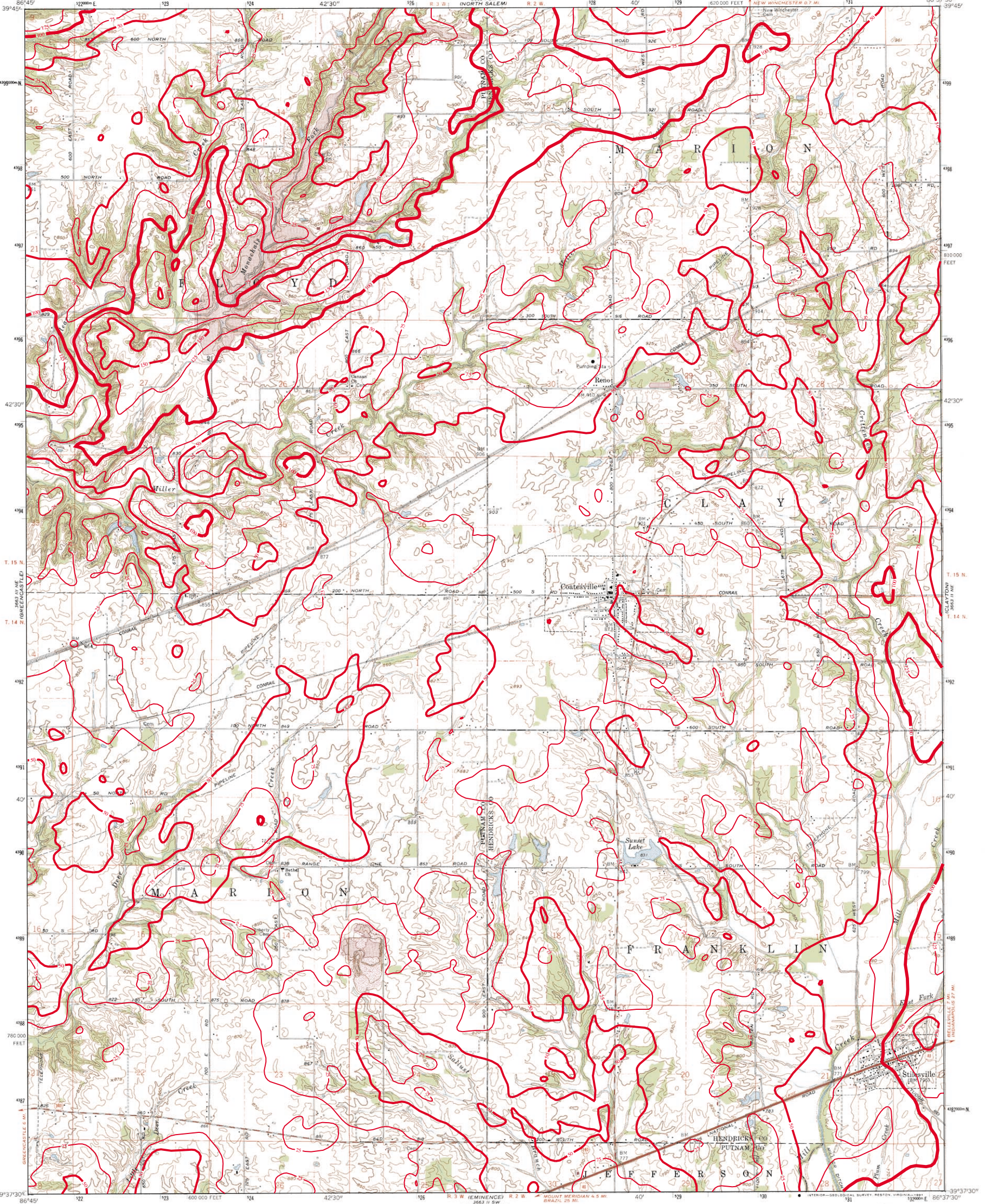


THICKNESS OF UNCONSOLIDATED DEPOSITS OF COATESVILLE QUADRANGLE, INDIANA

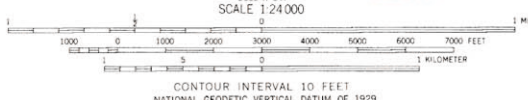
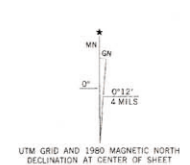
UNITED STATES
DEPARTMENT OF THE INTERIOR
GEOLOGICAL SURVEY

STATE OF INDIANA
DEPARTMENT OF NATURAL RESOURCES
INDIANAPOLIS, INDIANA

COATESVILLE QUADRANGLE
INDIANA
7.5 MINUTE SERIES (TOPOGRAPHIC)



Mapped, edited, and published by the Geological Survey
Control by USGS and USC&GS
Topography by photogrammetric methods from aerial photographs taken 1956. Field checked 1958. Revised from aerial photographs taken 1969. Field checked 1970.
Polyconic projection
10,000-foot grid based on Indiana coordinate system, west zone
1000-meter Universal Transverse Mercator grid ticks, zone 16, shown in blue. 1927 North American Datum
To place on the predicted North American Datum 1983 move the projection lines 1 meter south as shown by dashed corner ticks
Fine red dashed lines indicate selected fence and field lines where generally visible on aerial photographs. This information is unchecked
Map photospected 1983
No major culture or drainage changes observed



THIS MAP COMPLIES WITH NATIONAL MAP ACCURACY STANDARDS
FOR SALE BY U.S. GEOLOGICAL SURVEY, DENVER, COLORADO 80225, OR RESTON, VIRGINIA 22092
AND INDIANA DEPARTMENT OF NATURAL RESOURCES, INDIANAPOLIS, INDIANA 46204
A FOLDER DESCRIBING TOPOGRAPHIC MAPS AND SYMBOLS IS AVAILABLE ON REQUEST

ROAD CLASSIFICATION
Primary highway, hard surface ——— Light-duty road, hard or improved surface ———
Secondary highway, hard surface ——— Unimproved road ———
Interstate Route ——— U. S. Route ——— State Route ———

Revisions shown in purple compiled in cooperation with State of Indiana agencies from aerial photographs taken 1977 and other source data. This information not field checked. Map edited 1990

COATESVILLE, IND.
H 3337.5—W8637.5/7.5
PHOTOINSPECTED 1983
1970
PHOTOREVISED 1990
DMA 3863 II SW—SERIES V851



This map was created by Glenn Grove, IDNR, Division of Water, Ground Water Section. The digital elevation grid of the bedrock surface was subtracted from the grid of the land surface and the resultant grid contoured in ArcInfo. The land surface elevation grid is from 1:24,000 scale digital topography by the U.S. Geological Survey, Reston, Virginia, 1999 and 2001. The bedrock surface elevation grid is from a digital map of the bedrock surface topography of Hendricks County. The bedrock surface contouring was done by Glenn Grove and Marvin Thompson, IDNR, Division of Water, Ground Water Section, 1999, at a scale of 1:24,000. The bedrock contouring in Putnam County was modified from Walter Hasenmueller, Indiana Geological Survey, unpublished work map.
Contour interval = 25 feet.

Map generated by Glenn E. Grove
IDNR, Division of Water, Ground Water Section
June 25, 2001