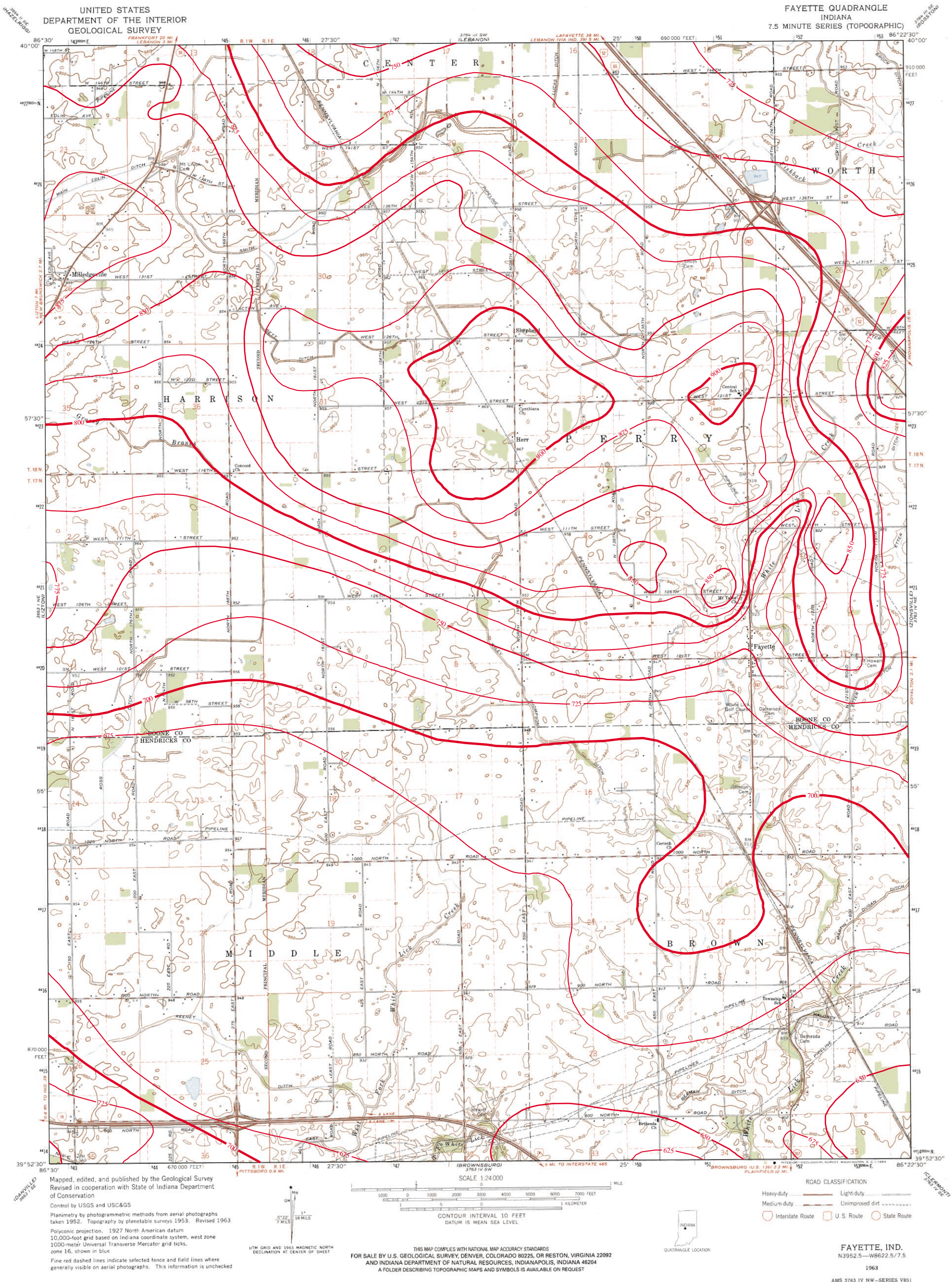
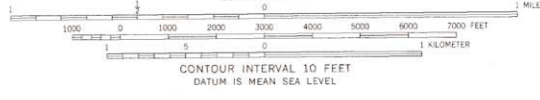


BEDROCK TOPOGRAPHY OF FAYETTE QUADRANGLE, INDIANA



Mapped, edited, and published by the Geological Survey
 Revised in cooperation with State of Indiana Department
 of Conservation
 Control by USGS and USC&GS
 Planimetry by photogrammetric methods from aerial photographs
 taken 1952. Topography by planimetric surveys 1953. Revised 1963
 Polyconic projection. 1927 North American datum
 10,000-foot grid based on Indiana coordinate system, west zone
 1000-meter Universal Transverse Mercator grid ticks,
 zone 16, shown in blue
 Fine red dashed lines indicate selected fence and field lines where
 generally visible on aerial photographs. This information is unchecked



THIS MAP COMPLES WITH NATIONAL MAP ACCURACY STANDARDS
 FOR SALE BY U.S. GEOLOGICAL SURVEY, DENVER, COLORADO 80225, OR RESTON, VIRGINIA 22092
 AND INDIANA DEPARTMENT OF NATURAL RESOURCES, INDIANAPOLIS, INDIANA 46204
 A FOLDER DESCRIBING TOPOGRAPHIC MAPS AND SYMBOLS IS AVAILABLE ON REQUEST

ROAD CLASSIFICATION
 Heavy-duty ——— Light-duty ———
 Medium-duty ——— Unimproved dirt ———
 Interstate Route U.S. Route State Route

FAYETTE, IND.
 N3952.5—W8622.5/7.5
 1963
 AMS 3763 IV NW—SERIES V851



Bedrock surface map derived from water well records housed in IDNR/DOW, Ground Water Section,
 oil and gas well records housed in IDNR/DOG, and seismic data from the Indiana Geological Survey (IGS).
 Bedrock contouring by Marvin Thompson, Ground Water Section, Division of Water, IDNR, 1998.
 Bedrock contouring in Marion County modified from Fleming and others, 1993.
 Originally mapped at a scale of 1:24,000 on USGS topographic maps. Bedrock surface contour interval = 25 feet.
 Originally mapped at a scale of 1:24,000 on USGS topographic maps. Bedrock surface contour interval = 25 feet.

Map created by Glenn E. Grove
 IDNR, Division of Water, Ground Water Section
 May 18, 2001