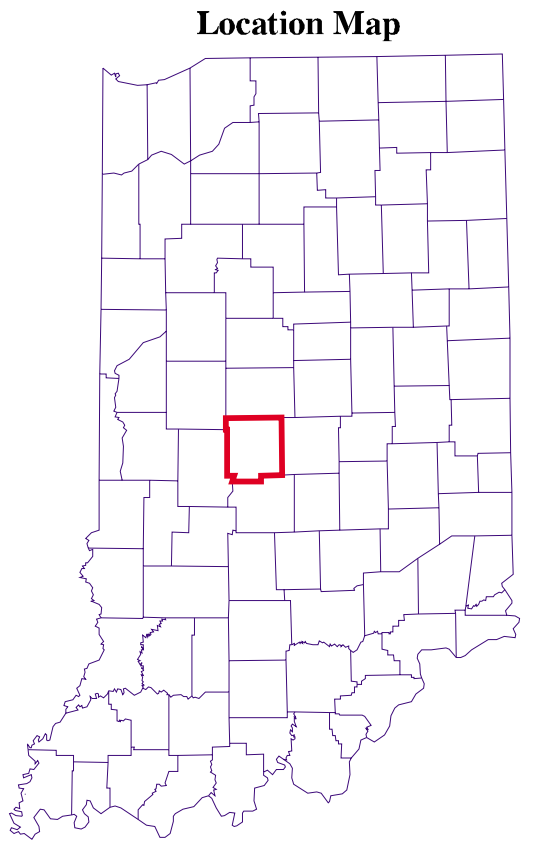
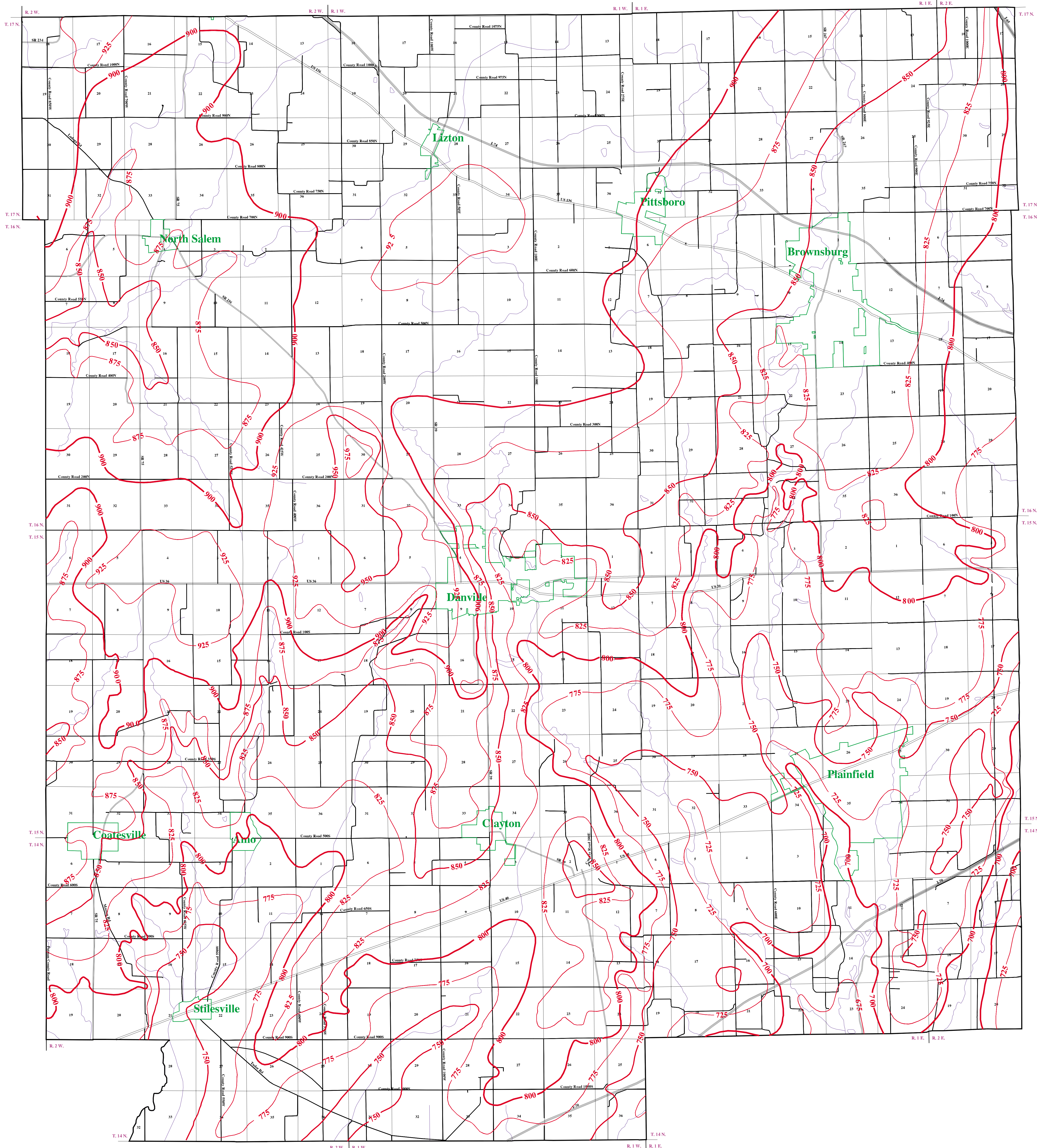
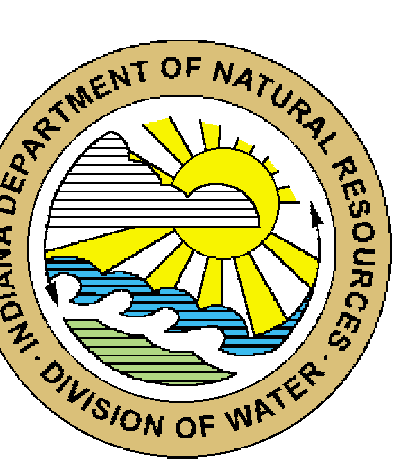
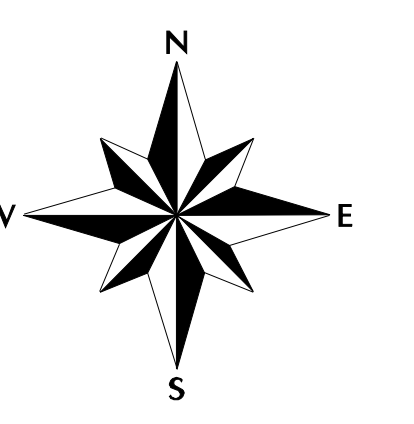
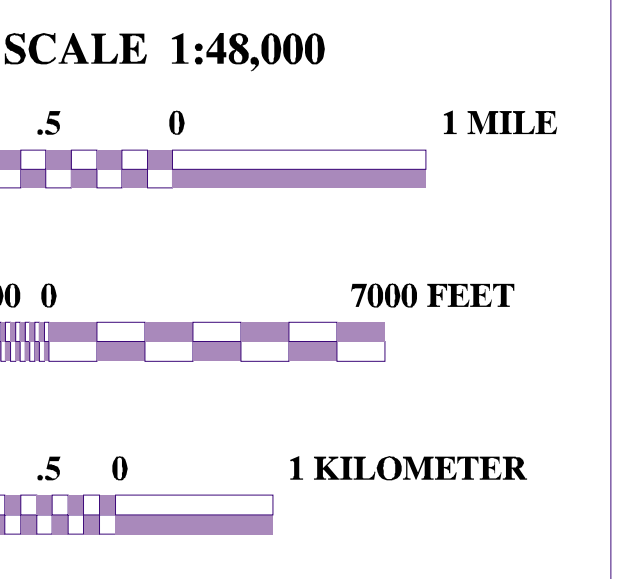


GENERALIZED POTENTIOMETRIC SURFACE MAP FOR BEDROCK AQUIFERS IN HENDRICKS COUNTY, INDIANA



- EXPLANATION**
- Tiger files (1999)
 - Interstate Route
 - U.S. & State Route
 - County Road
 - Streams
 - Municipal Boundary

Contour Interval 25 feet



Generalized potentiometric surface map for bedrock aquifers derived from water well records housed in IDNR/DOW, Ground Water Section. Bedrock potentiometric surface contouring by Glenn E. Grove and William C. Herring, Ground Water Section, Division of Water, IDNR, 2002.
Originally mapped at a scale of 1:29,404 on Sure!MAP RASTER digital USGS topographic maps.

Generalized Potentiometric Surface Map for Bedrock
Aquifers in Hendricks County, Indiana
by
Glenn E. Grove and William C. Herring
2002

Map generated by Glenn E. Grove
IDNR, Division of Water, Ground Water Section
August 29, 2002