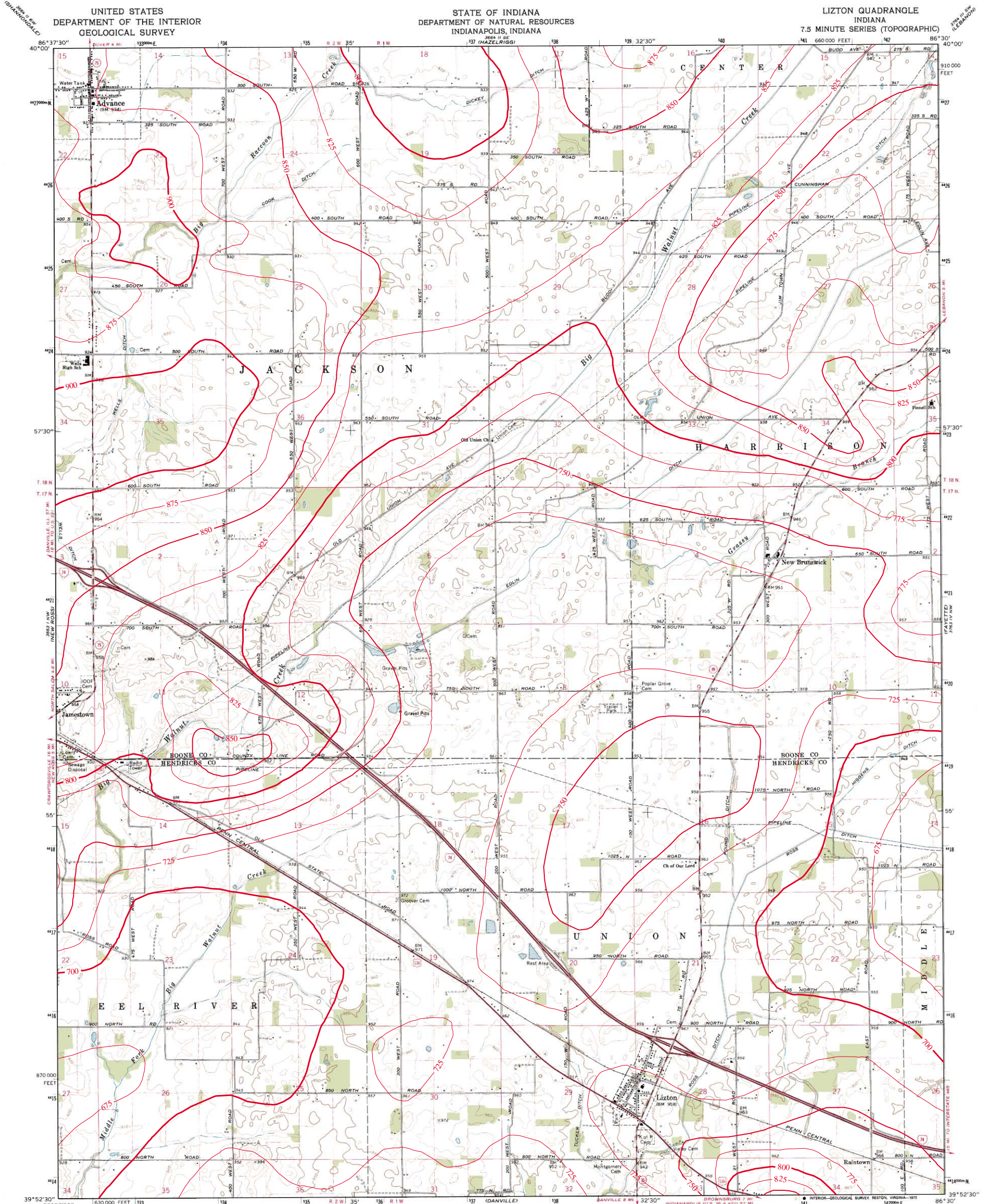


# BEDROCK TOPOGRAPHY OF LIZTON QUADRANGLE, INDIANA



Mapped, edited, and published by the Geological Survey  
 Control by USGS and USC&GS  
 Planimetry by photogrammetric methods from aerial photographs taken 1952. Topography by planimetric surveys 1953. Revised from aerial photographs taken 1969. Field checked 1970.  
 Polyconic projection. 1927 North American datum 10,000-foot grid based on Indiana coordinate system, west zone 1000-meter Universal Transverse Mercator grid ticks, zone 16, shown in blue.  
 Fine red dashed lines indicate selected fence and field lines where generally visible on aerial photographs. This information is unchecked.

UTM GRID AND 1973 MAGNETIC NORTH DECLINATION AT CENTER OF SHEET

SCALE 1:24,000

CONTOUR INTERVAL 10 FEET  
 DATUM IS MEAN SEA LEVEL

ROAD CLASSIFICATION

Primary highway, hard surface	Light-duty road, hard or improved surface
Secondary highway, hard surface	Unimproved road
Interstate Route	U. S. Route
	State Route

THIS MAP COMPLIES WITH NATIONAL MAP ACCURACY STANDARDS  
 FOR SALE BY U. S. GEOLOGICAL SURVEY, WASHINGTON, D. C. 20242  
 AND INDIANA DEPARTMENT OF NATURAL RESOURCES, INDIANAPOLIS, INDIANA 46204  
 A FOLDER DESCRIBING TOPOGRAPHIC MAPS AND SYMBOLS IS AVAILABLE ON REQUEST

LIZTON, IND.  
 N3952.5-W8630.7/5  
 1970  
 AMS 3663 1 NE-SERIES V851



Bedrock surface map derived from water well records housed in IDNR/DOW, Ground Water Section, oil and gas well records housed in IDNR/DOG, and seismic data from the Indiana Geological Survey (IGS). Bedrock contouring by Marvin Thompson, Ground Water Section, Division of Water, IDNR, 1998.  
 Originally mapped at a scale of 1:24,000 on USGS topographic maps. Bedrock surface contour interval = 25 feet.

Map generated by Glenn E. Grove  
 IDNR, Division of Water, Ground Water Section  
 January 17, 2002