

Water Use and Hydrologic Data Network in the Kankakee River Basin

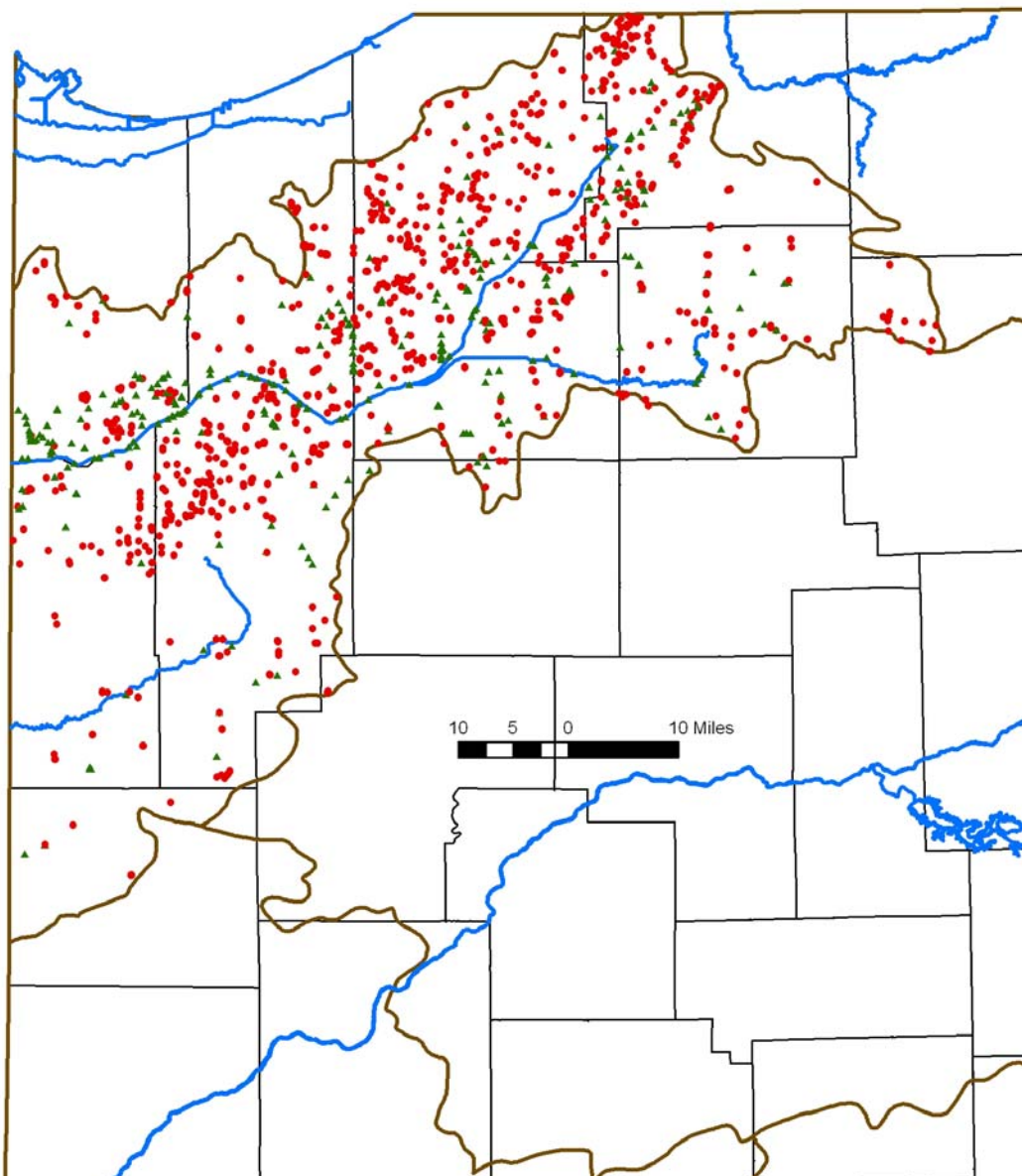
Report to the Water Shortage Task Force
November 30, 2007

INDIANA WATER MANAGEMENT BASINS



Kankakee Basin Registered Wells & Intakes

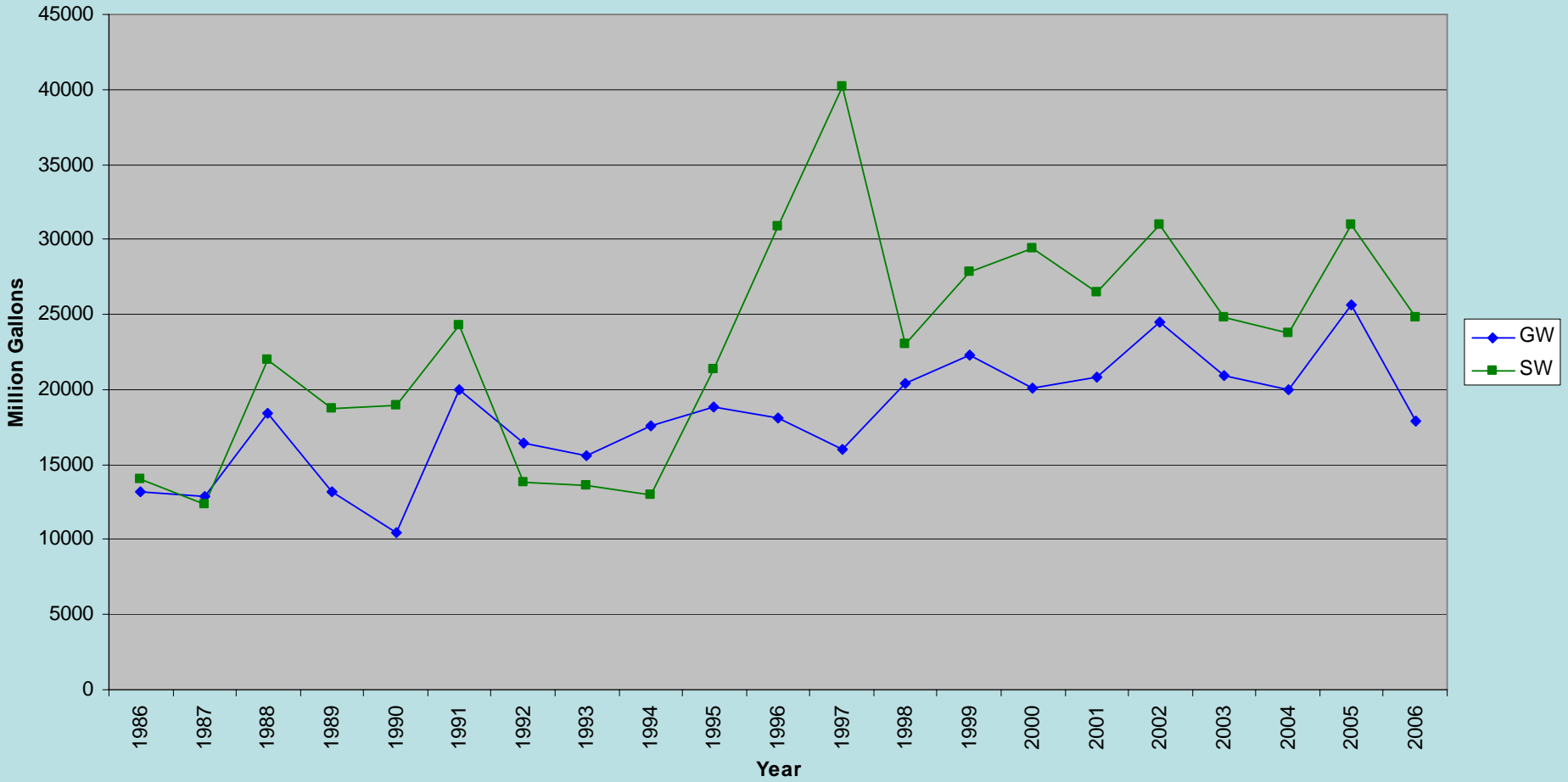
- Well
- ▲ Intake



KANKAKEE BASIN SWWF DATA

	<i>Withdrawals 2006 (BG)</i>	<i>Capacity (MGD)</i>	<i>Withdrawals vs Capacity</i>	<i>Number</i>
Surface Intakes	24.8	1220	5.6%	316
Wells	17.9	806	6.1%	1112
TOTAL	42.7	2027	5.8%	1428
Facilities				803

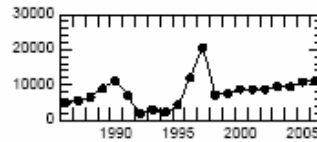
Kankakee Basin Withdrawals



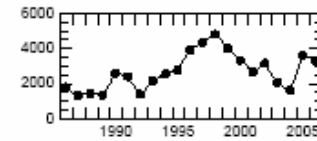
Kankakee River Basin Reported Withdrawals, 1986-2006

ANNUAL WITHDRAWALS IN MILLIONS OF GALLONS

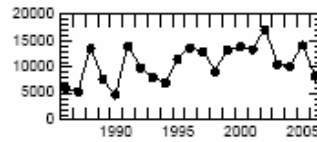
SURFACE WATER



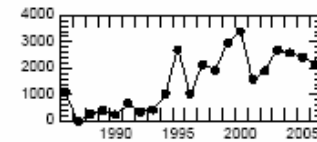
ENERGY PRODUCTION



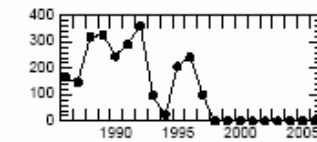
INDUSTRY



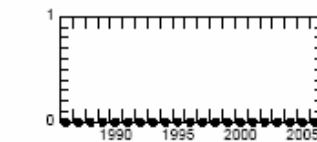
AGRICULTURE



MISCELLANEOUS

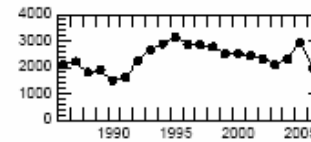


PUBLIC SUPPLY

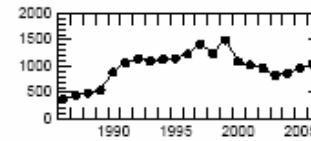


RURAL

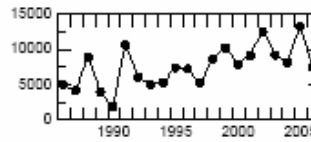
GROUND WATER



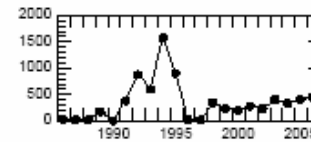
ENERGY PRODUCTION



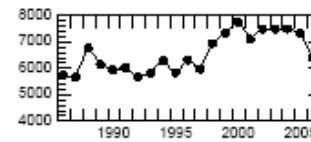
INDUSTRY



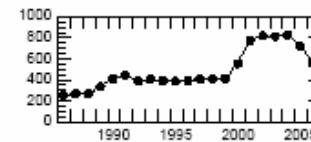
AGRICULTURE



MISCELLANEOUS

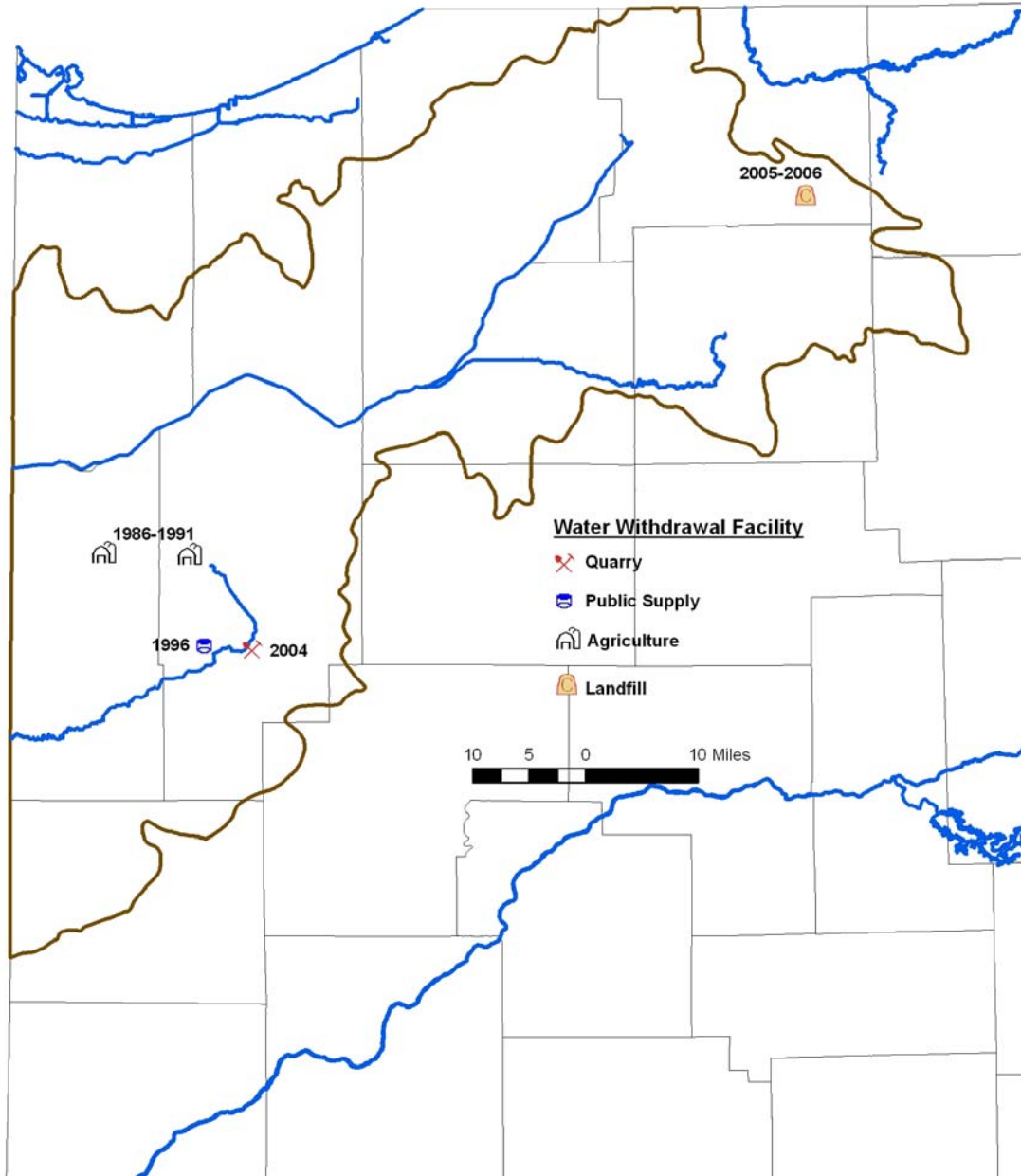


PUBLIC SUPPLY

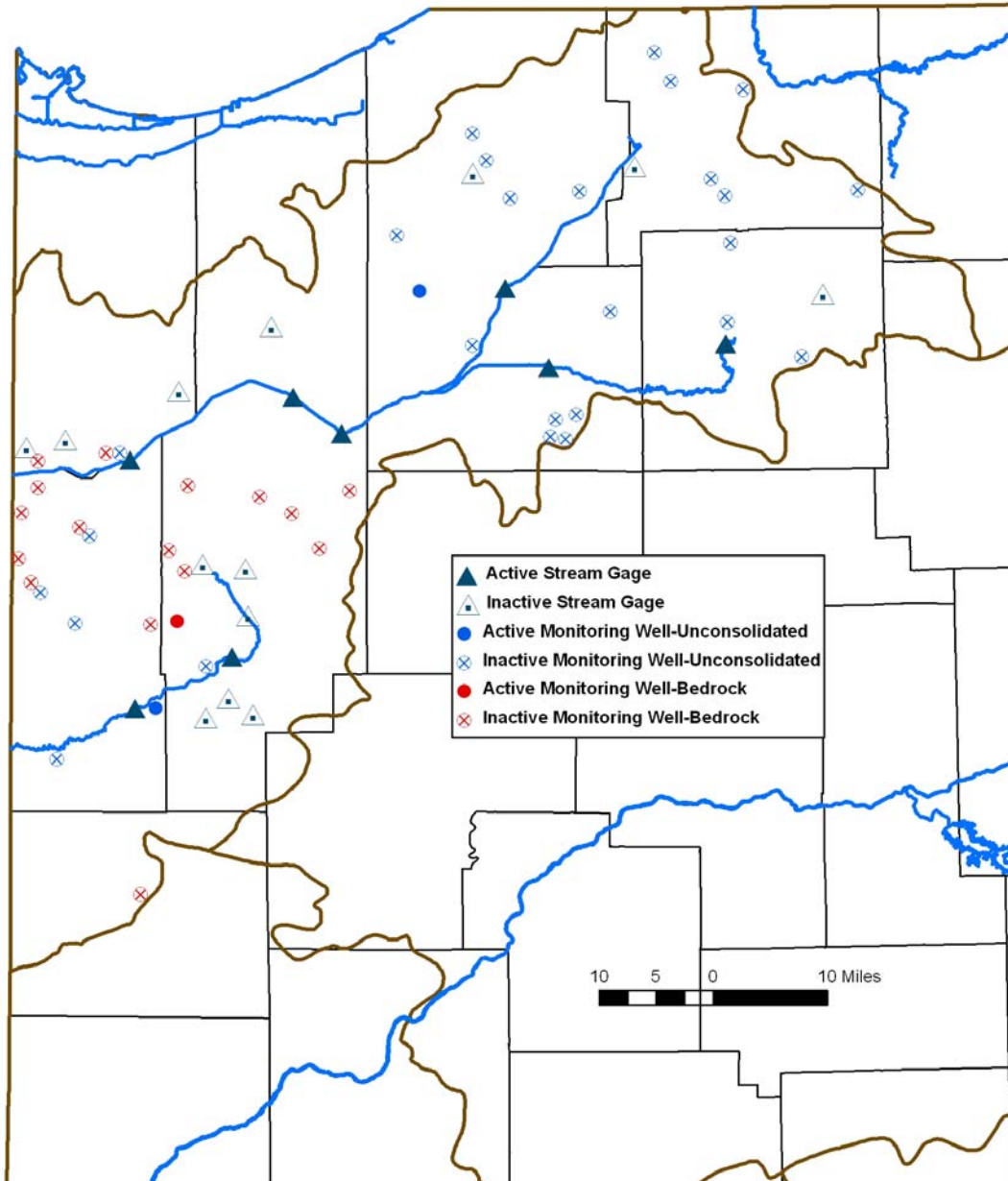


RURAL

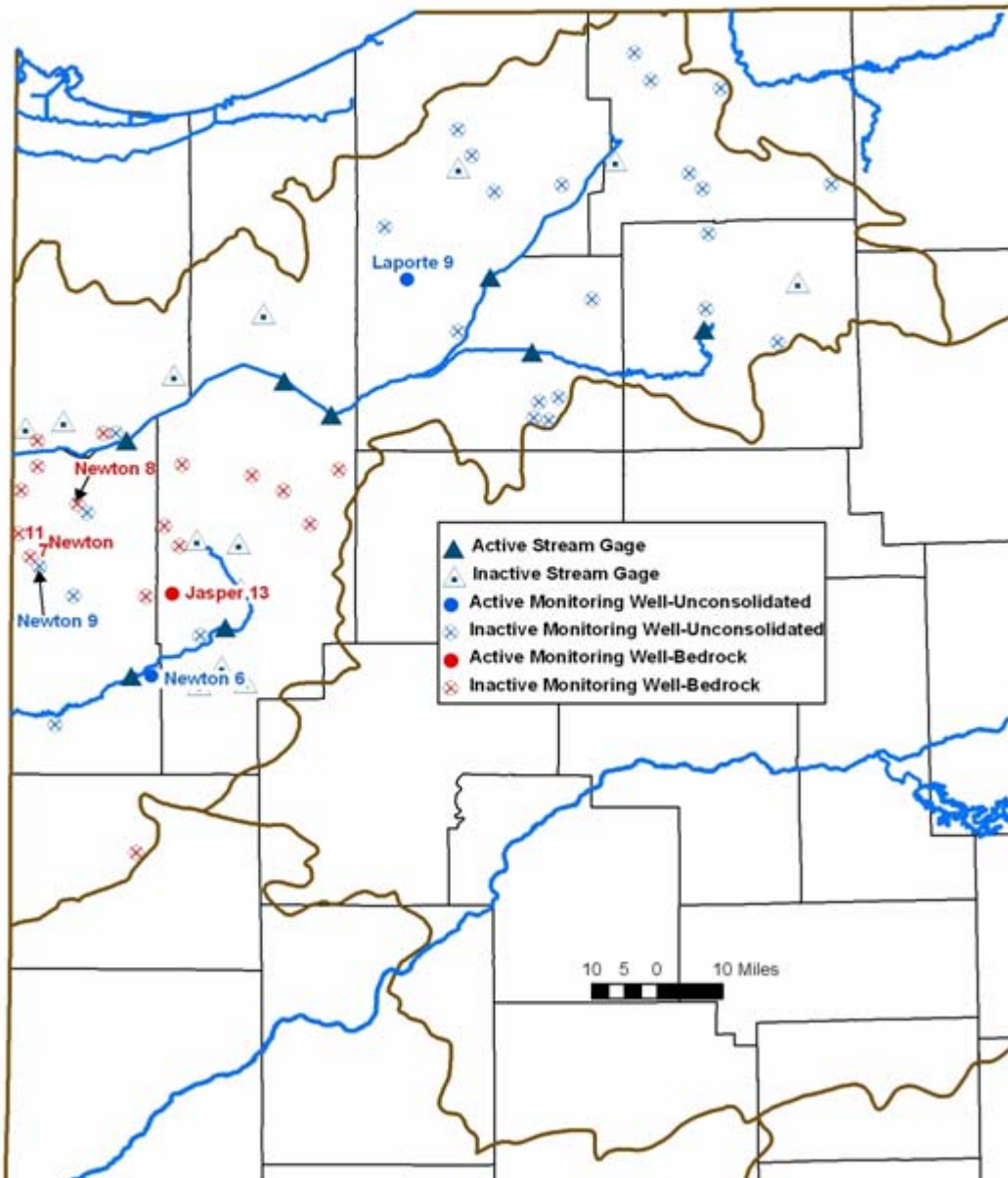
Kankakee Basin Groundwater Conflicts: 1986-2006



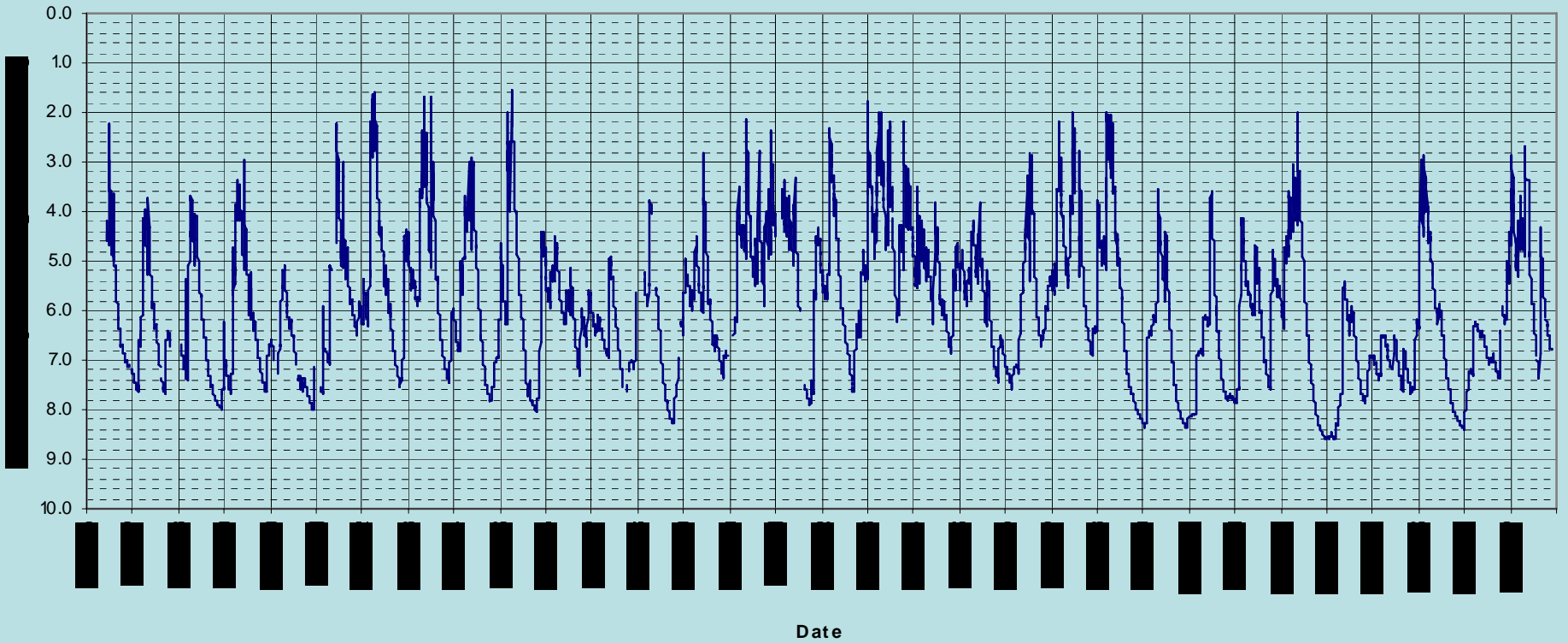
Kankakee Basin Monitoring Wells & Stream Gages



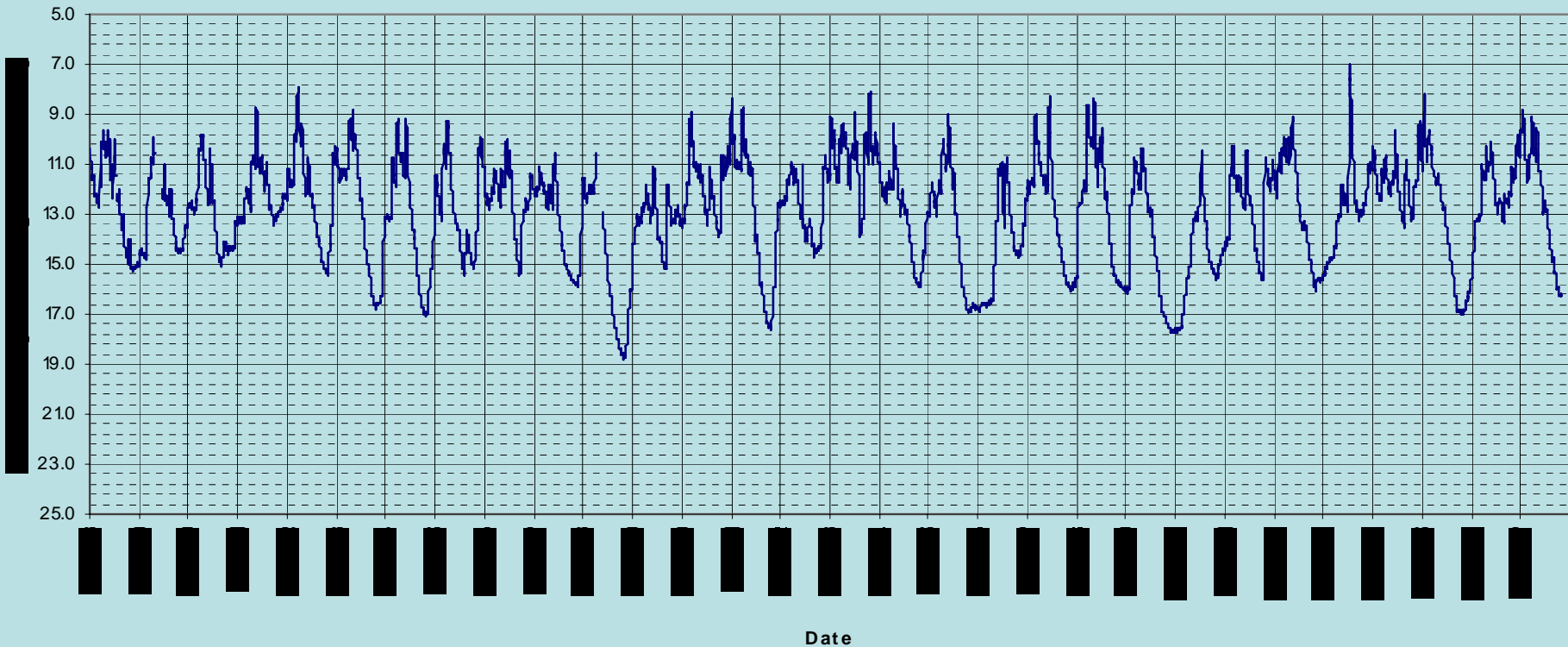
Kankakee Basin Monitoring Wells & Stream Gages



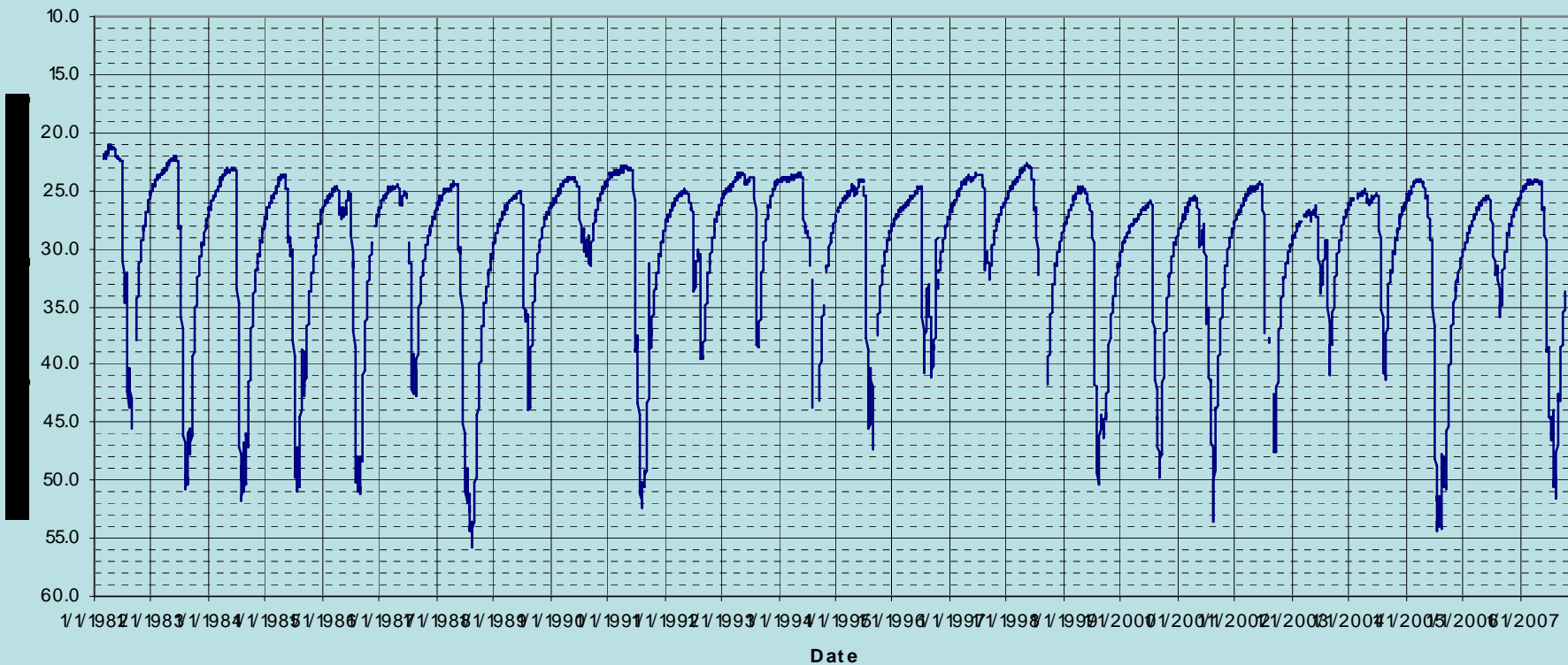
La Porte 9



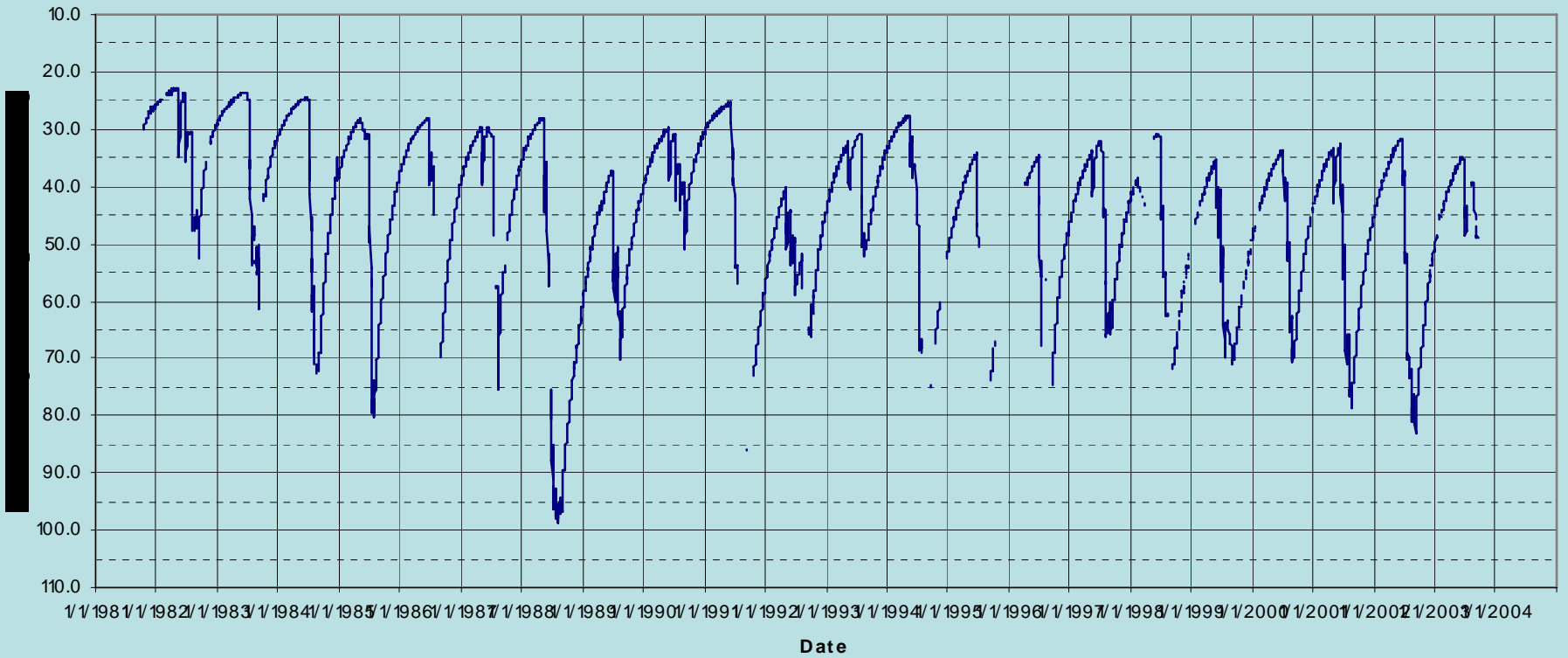
Newton 6



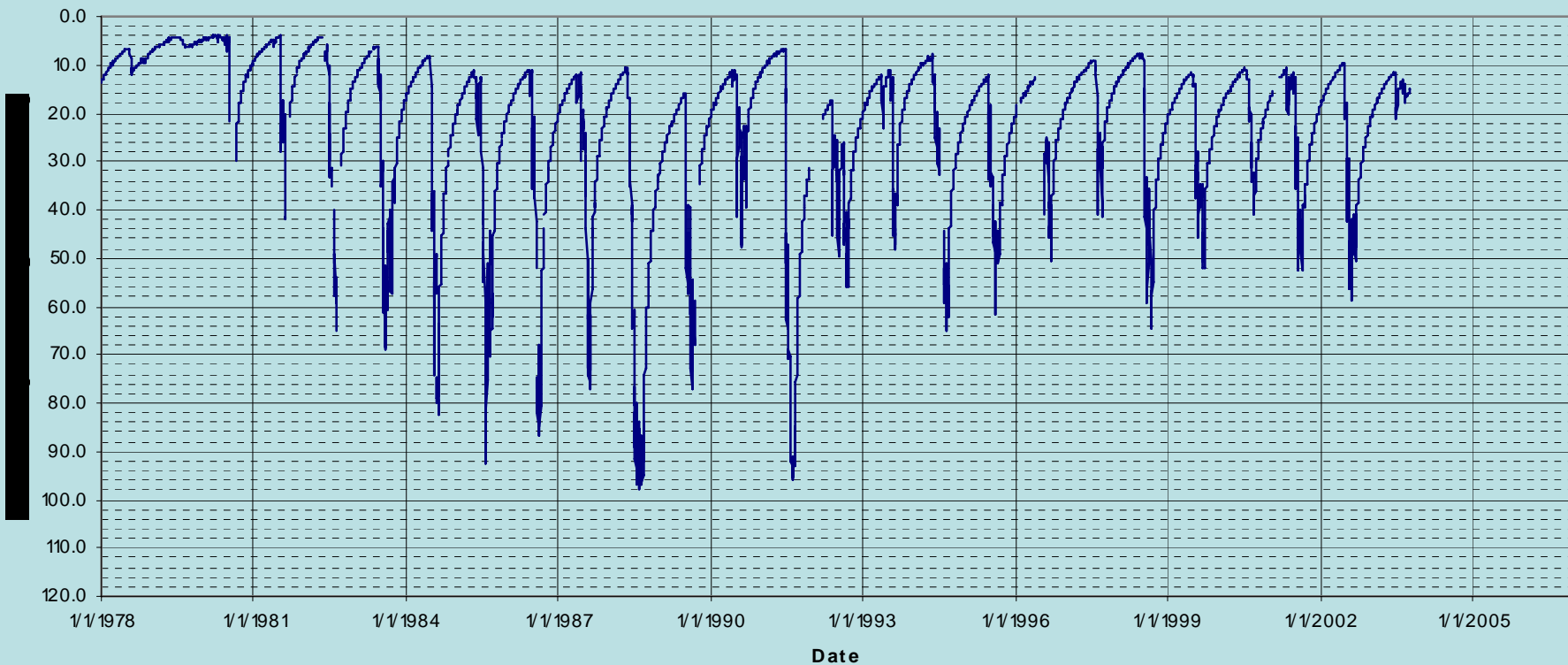
Jasper 13



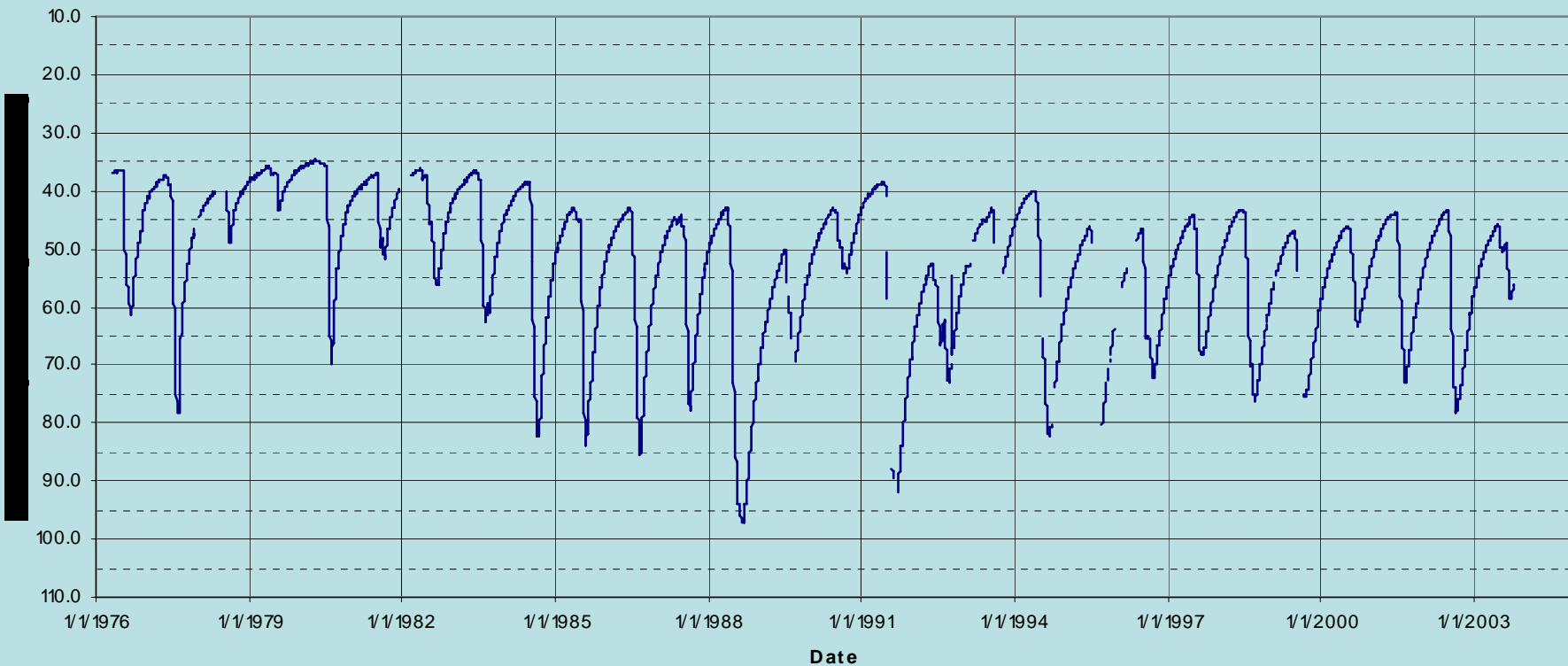
Newton 11



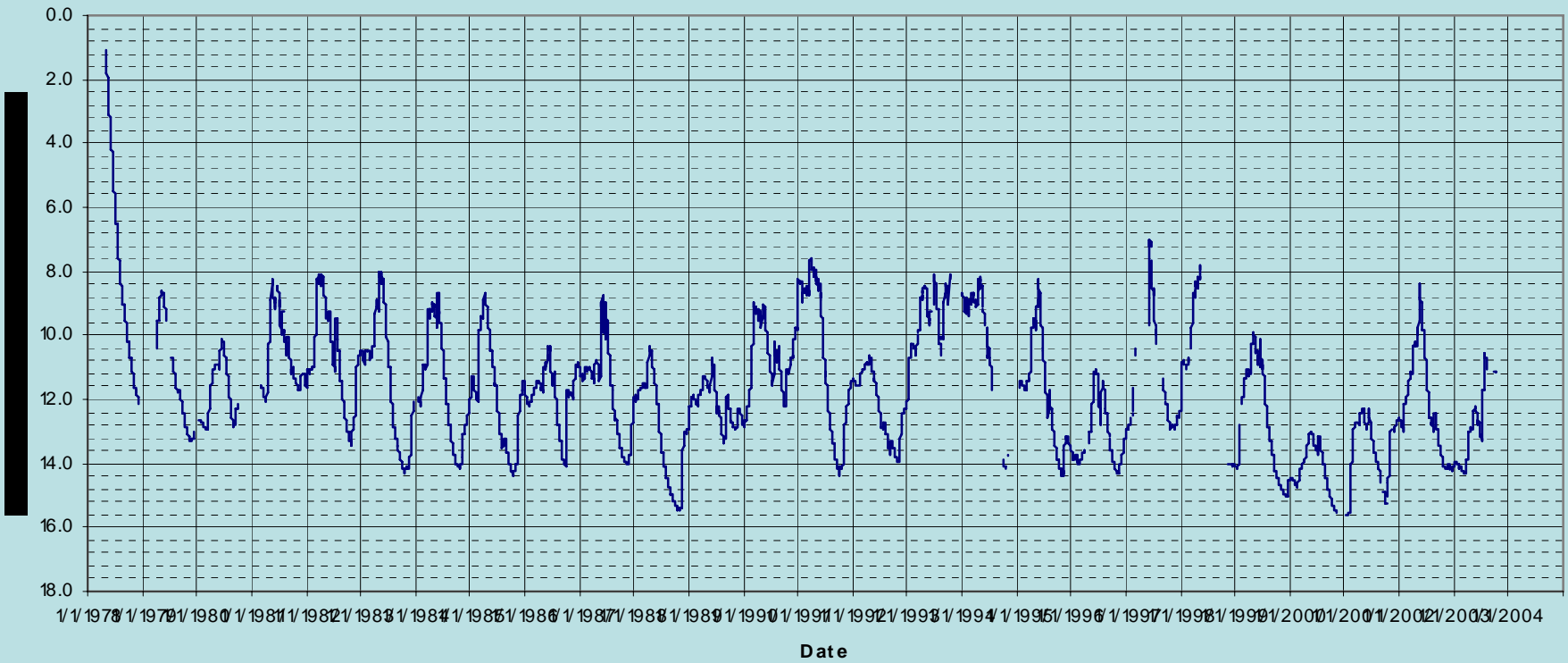
Newton 8



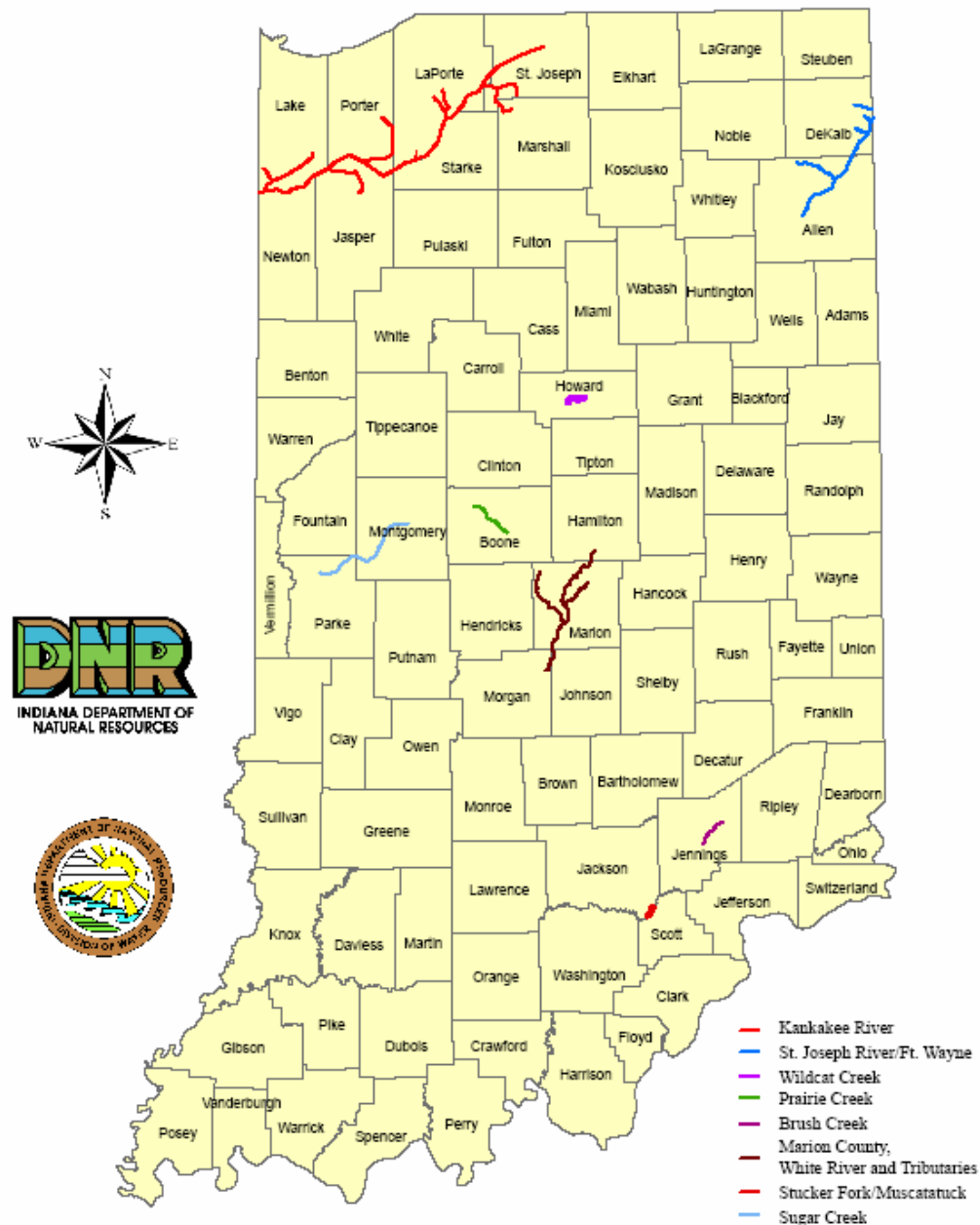
Newton 7



Newton 9



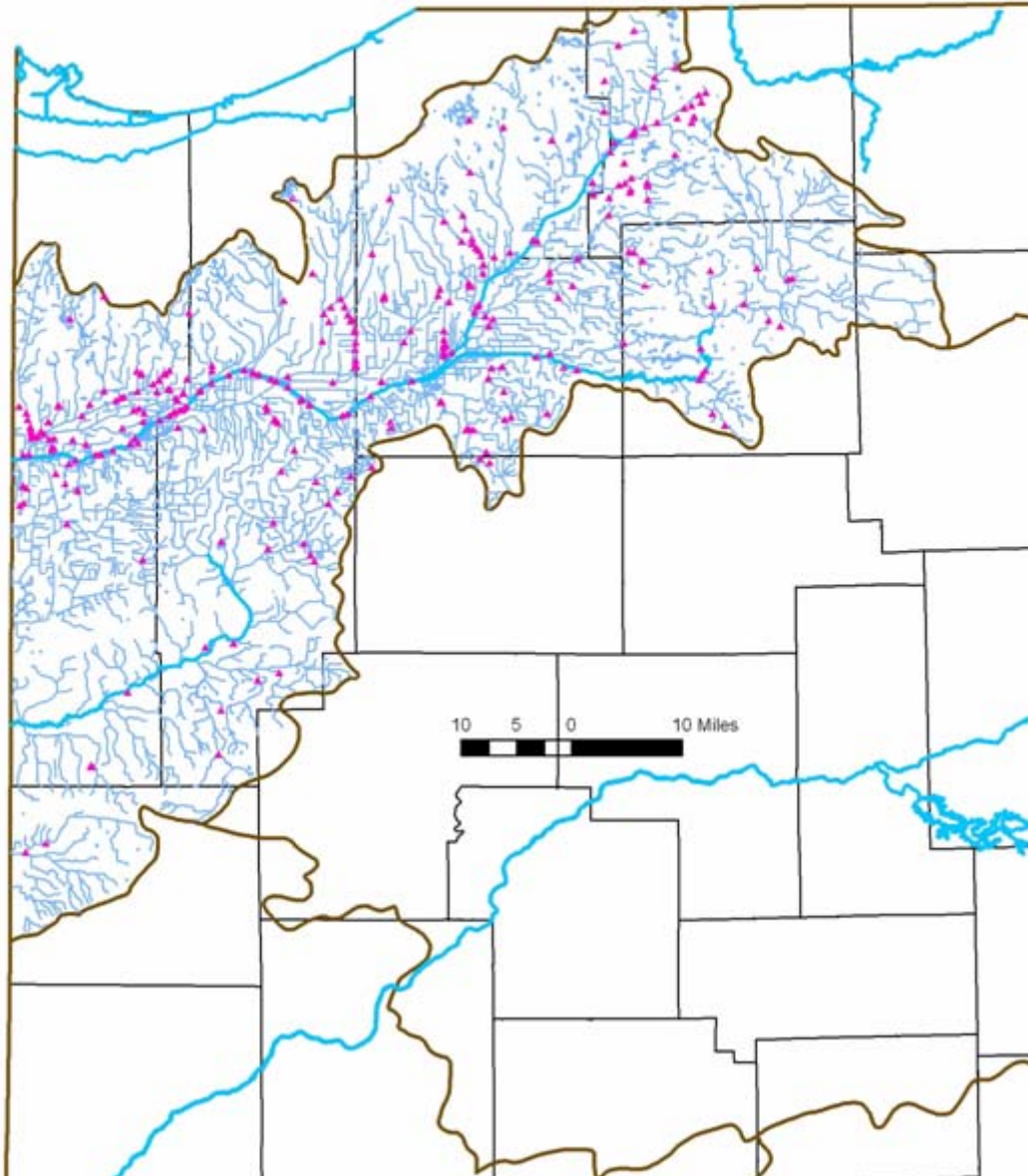
Stream Reaches with Reported Water Withdrawl Conflicts (1988)



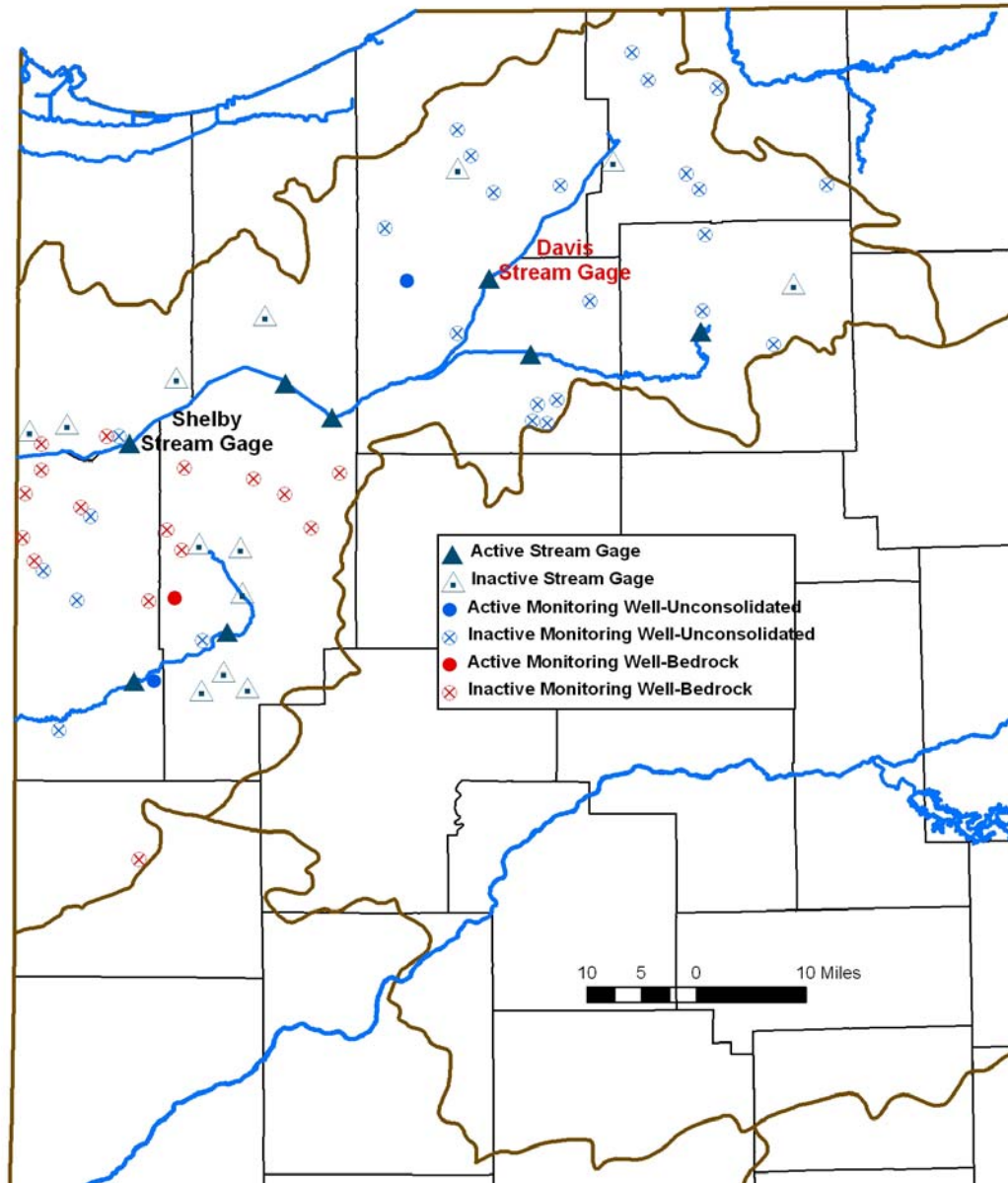
Map generated by Andrew G. Dunkman
 IDNR, Division of Water, Resource Assessment Section

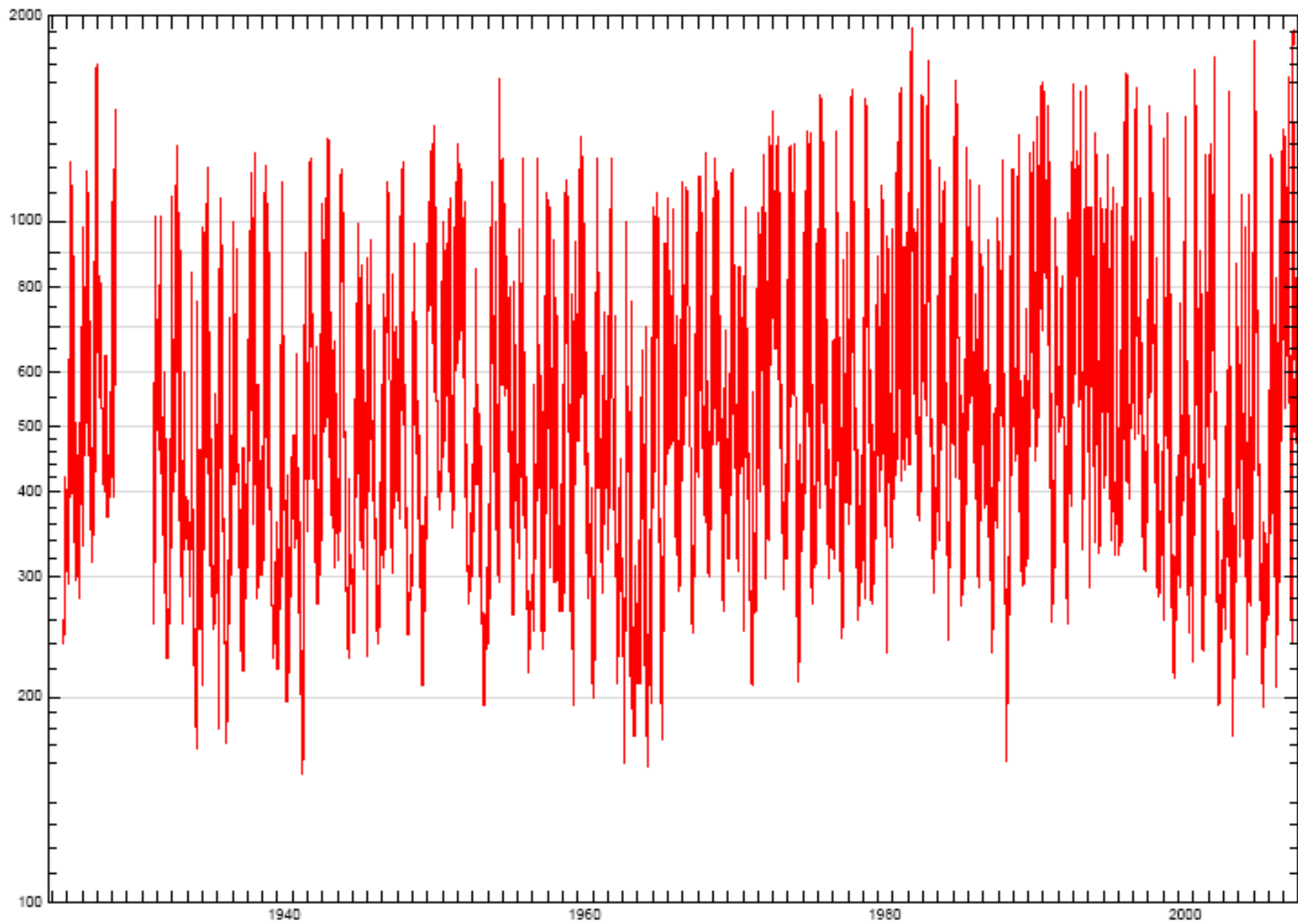
Kankakee Basin Registered Wells & Intakes

▲ Intake



Kankakee Basin Monitoring Wells & Stream Gages

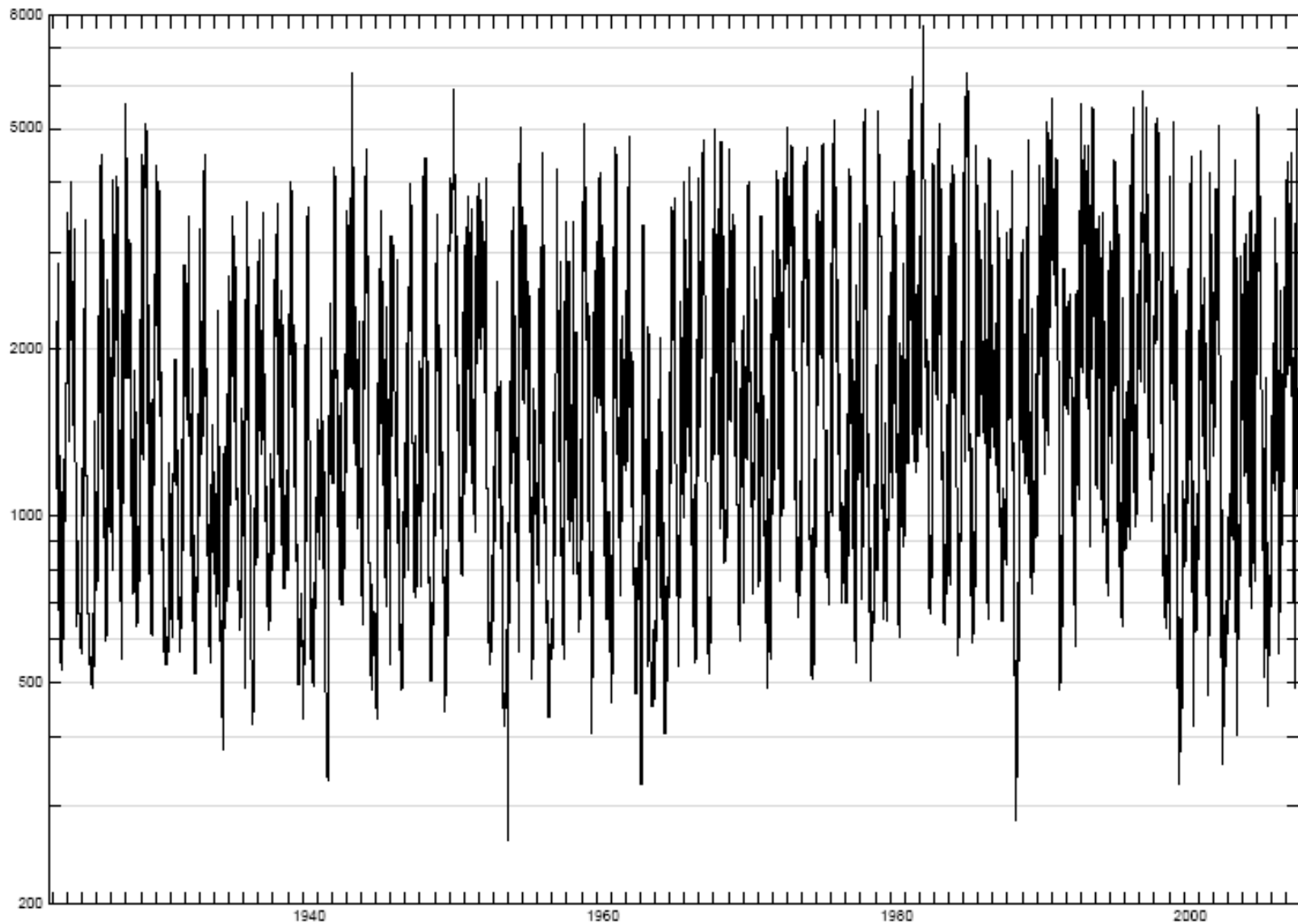




— 05515500

KANKAKEE RIVER AT DAVIS, IN

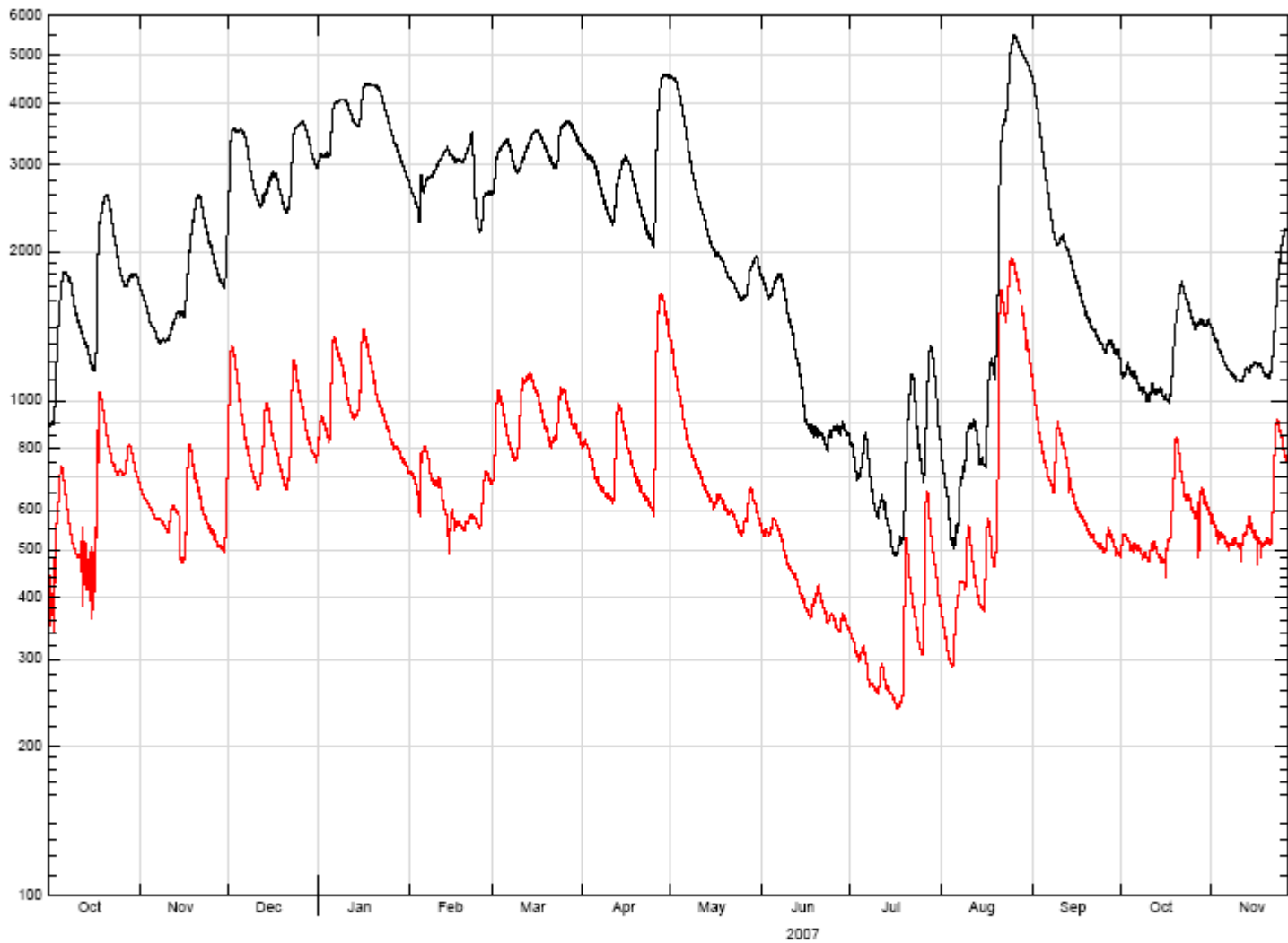
(DAILY MEAN Discharge (cfs)) * 1



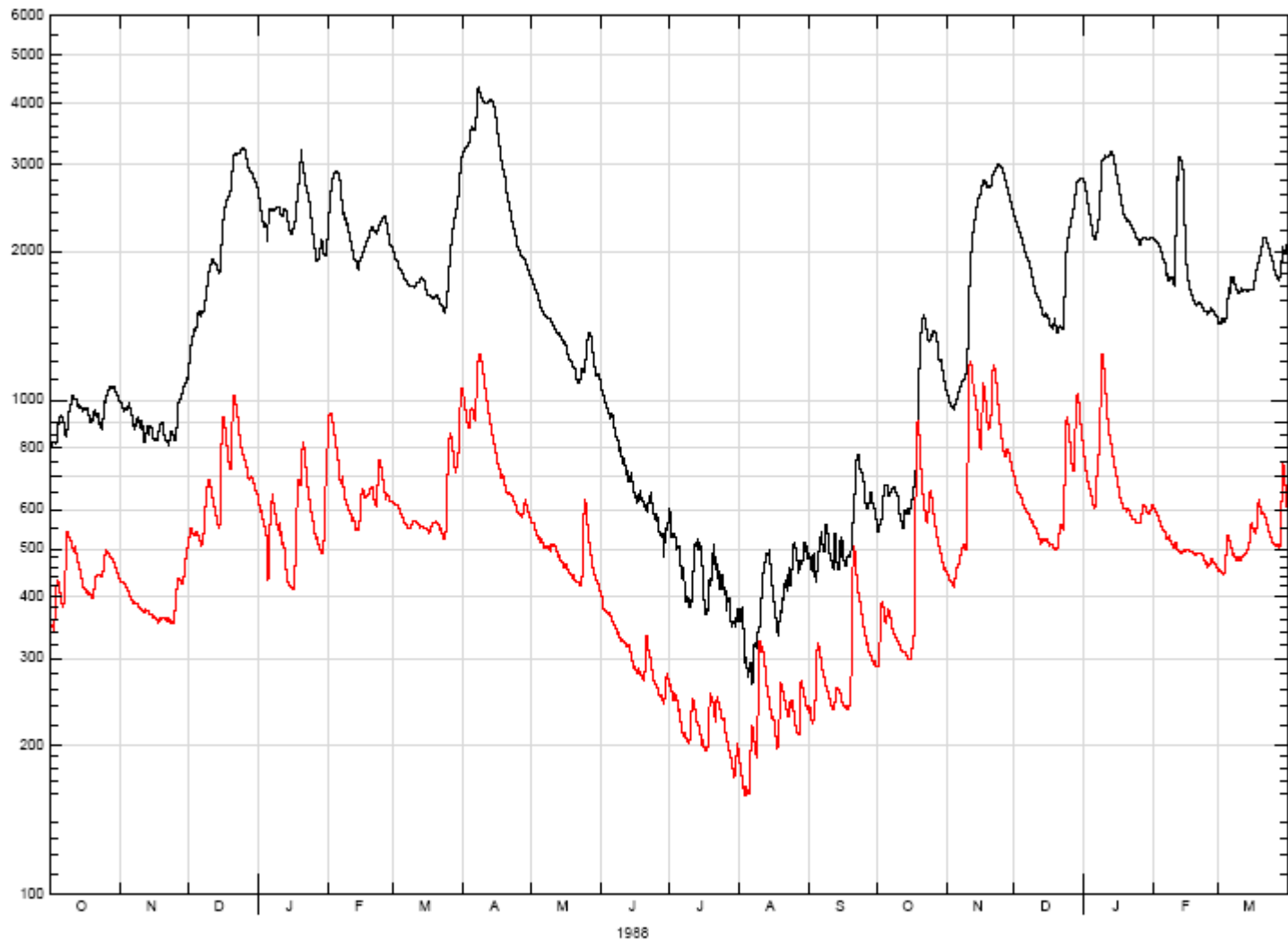
— 05518000

KANKAKEE RIVER AT SHELBY, IN

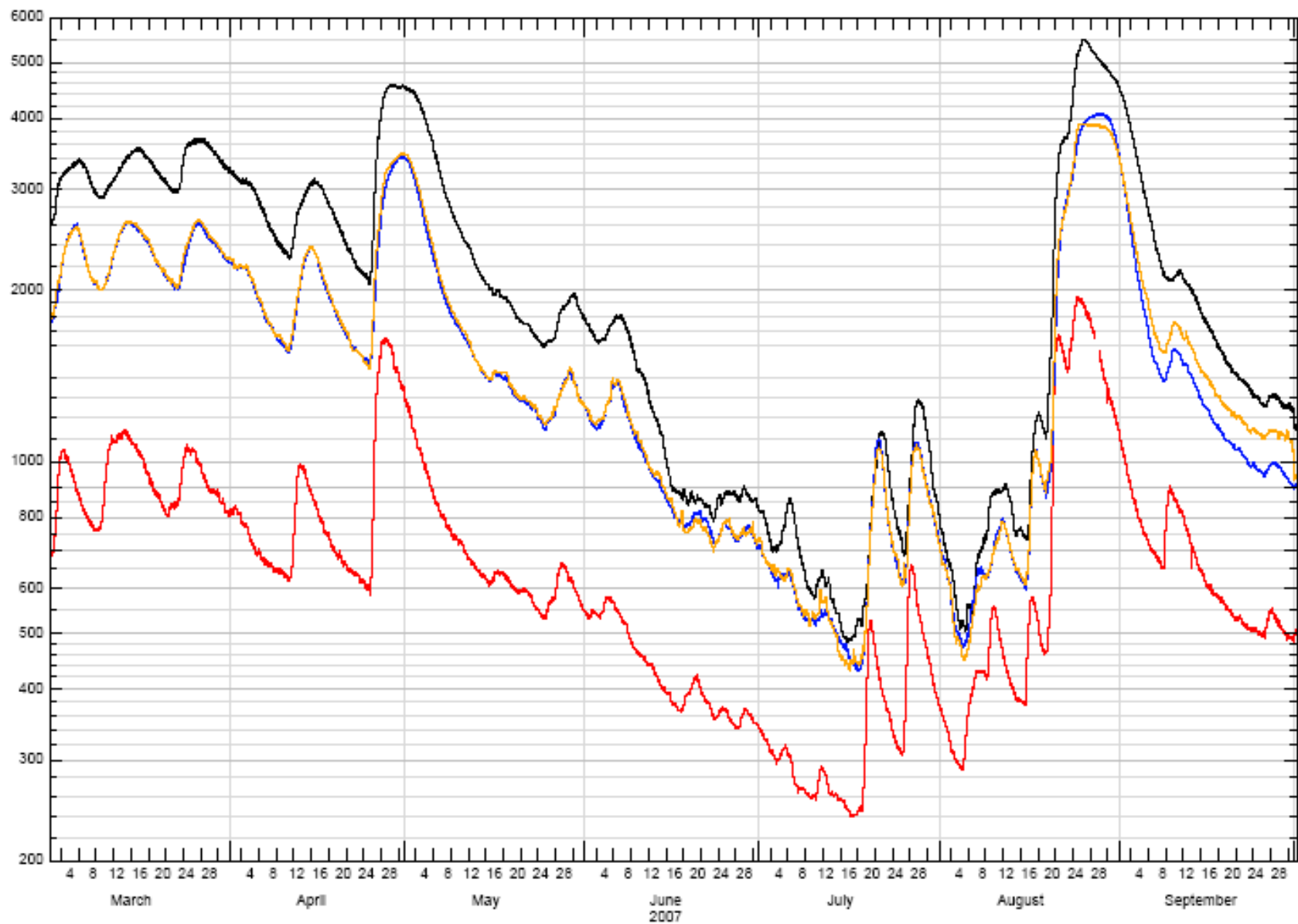
(DAILY MEAN Discharge (cfs)) * 1



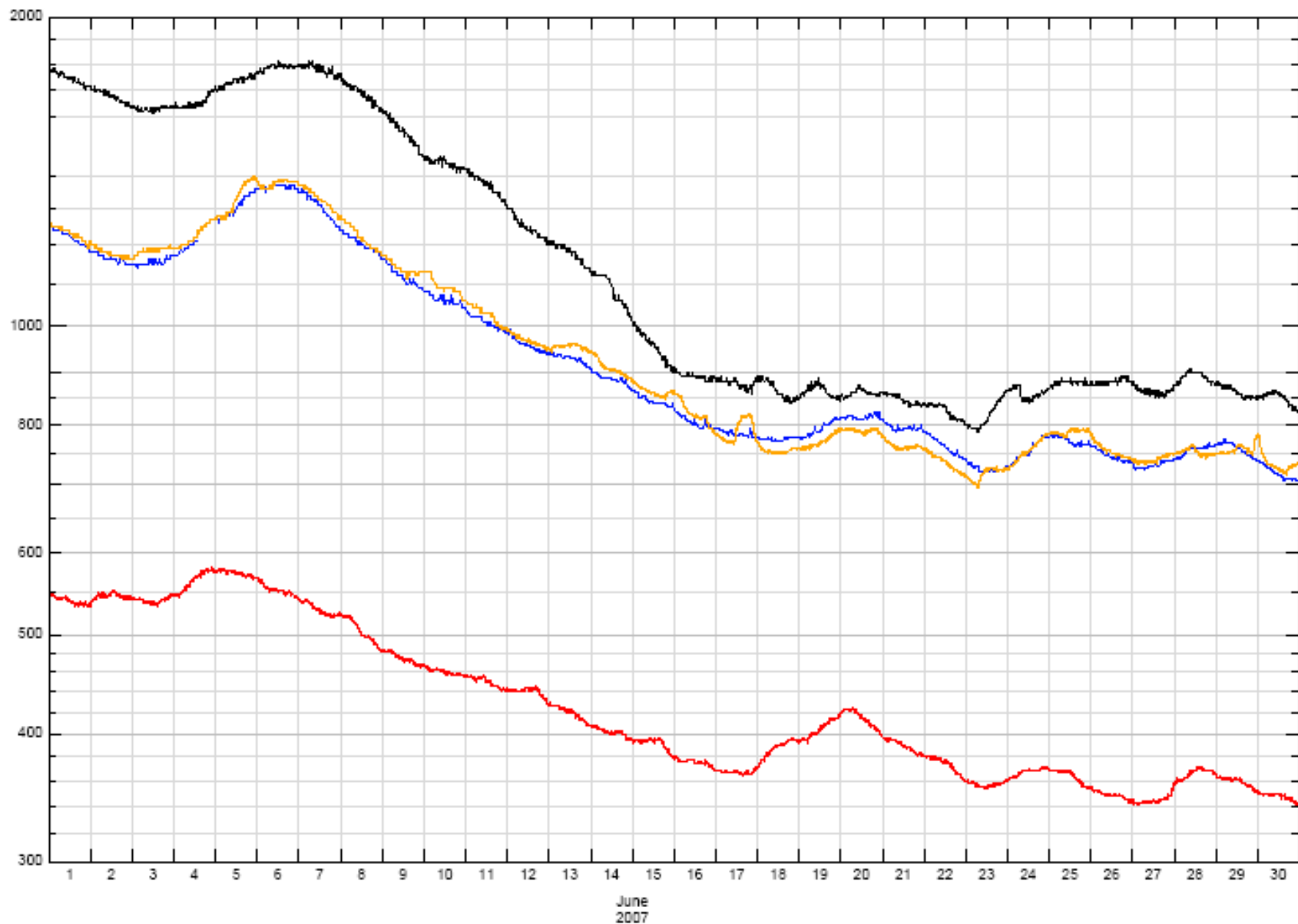
— 05518000 KANKAKEE RIVER AT SHELBY, IN [Discharge (cfs), COMPUTED] * 1
 — 05515500 KANKAKEE RIVER AT DAVIS, IN [Discharge (cfs), COMPUTED] * 1



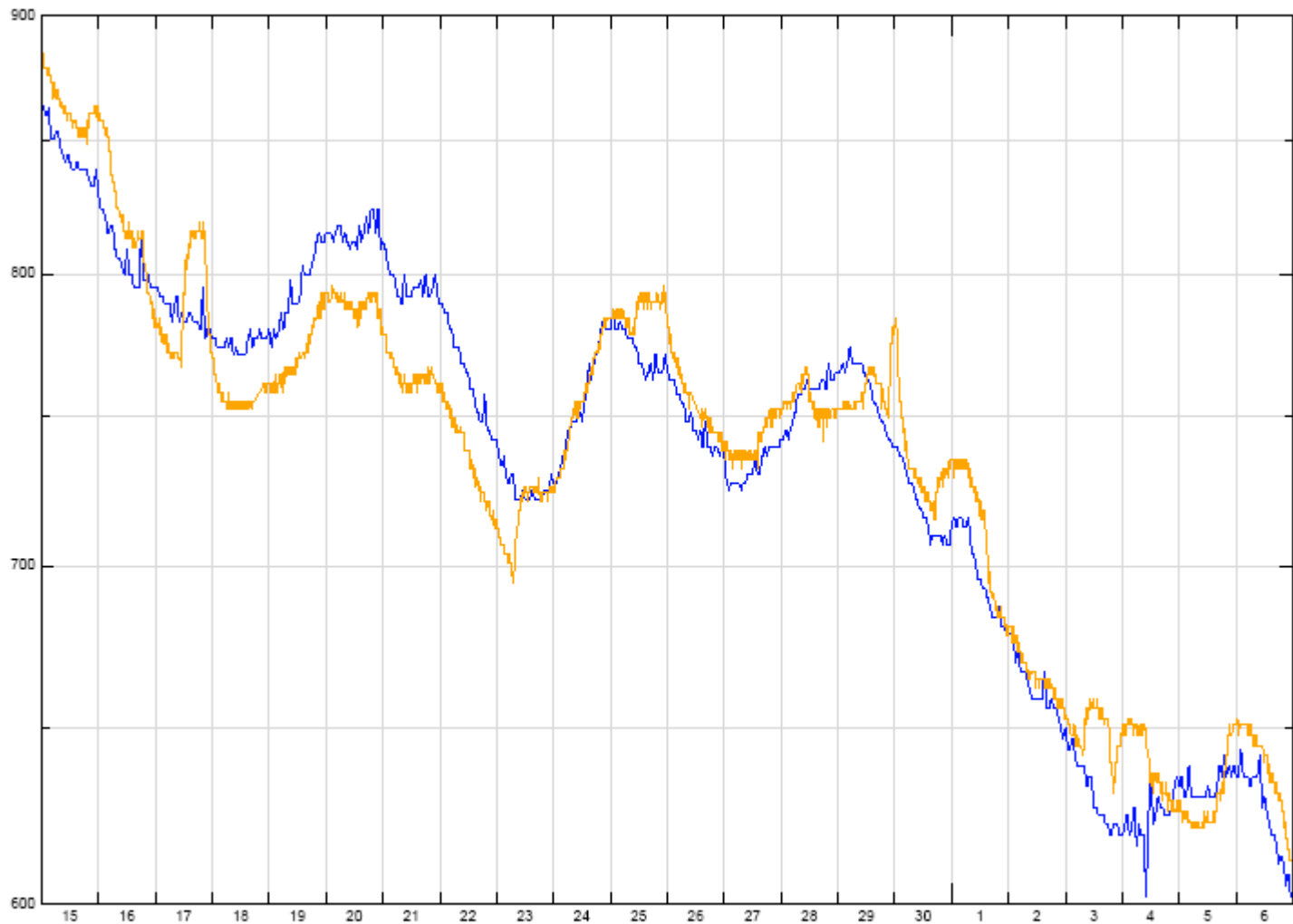
— 05518000 KANKAKEE RIVER AT SHELBY, IN [Discharge (cfs), COMPUTED] * 1
 — 05515500 KANKAKEE RIVER AT DAVIS, IN [Discharge (cfs), COMPUTED] * 1



— 05518000	KANKAKEE RIVER AT SHELBY, IN	[Discharge (cfs), COMPUTED] * 1
— 05515500	KANKAKEE RIVER AT DAVIS, IN	[Discharge (cfs), COMPUTED] * 1
— 05517500	KANKAKEE RIVER AT DUNNS BRIDGE, IN	[Discharge (cfs), COMPUTED] * 1
— 05517530	KANKAKEE RIVER NR KOUTS, IN	[Discharge (cfs), COMPUTED] * 1



—	05518000	KANKAKEE RIVER AT SHELBY, IN	[Discharge (cfs), COMPUTED] * 1
—	05515500	KANKAKEE RIVER AT DAVIS, IN	[Discharge (cfs), COMPUTED] * 1
—	05517500	KANKAKEE RIVER AT DUNNS BRIDGE, IN	[Discharge (cfs), COMPUTED] * 1
—	05517530	KANKAKEE RIVER NR KOUTS, IN	[Discharge (cfs), COMPUTED] * 1



June
2007

— 05517500
— 05517530

KANKAKEE RIVER AT DUNNS BRIDGE, IN
KANKAKEE RIVER NR KOUTS, IN

[Discharge (cfs), COMPUTED] * 1
[Discharge (cfs), COMPUTED] * 1