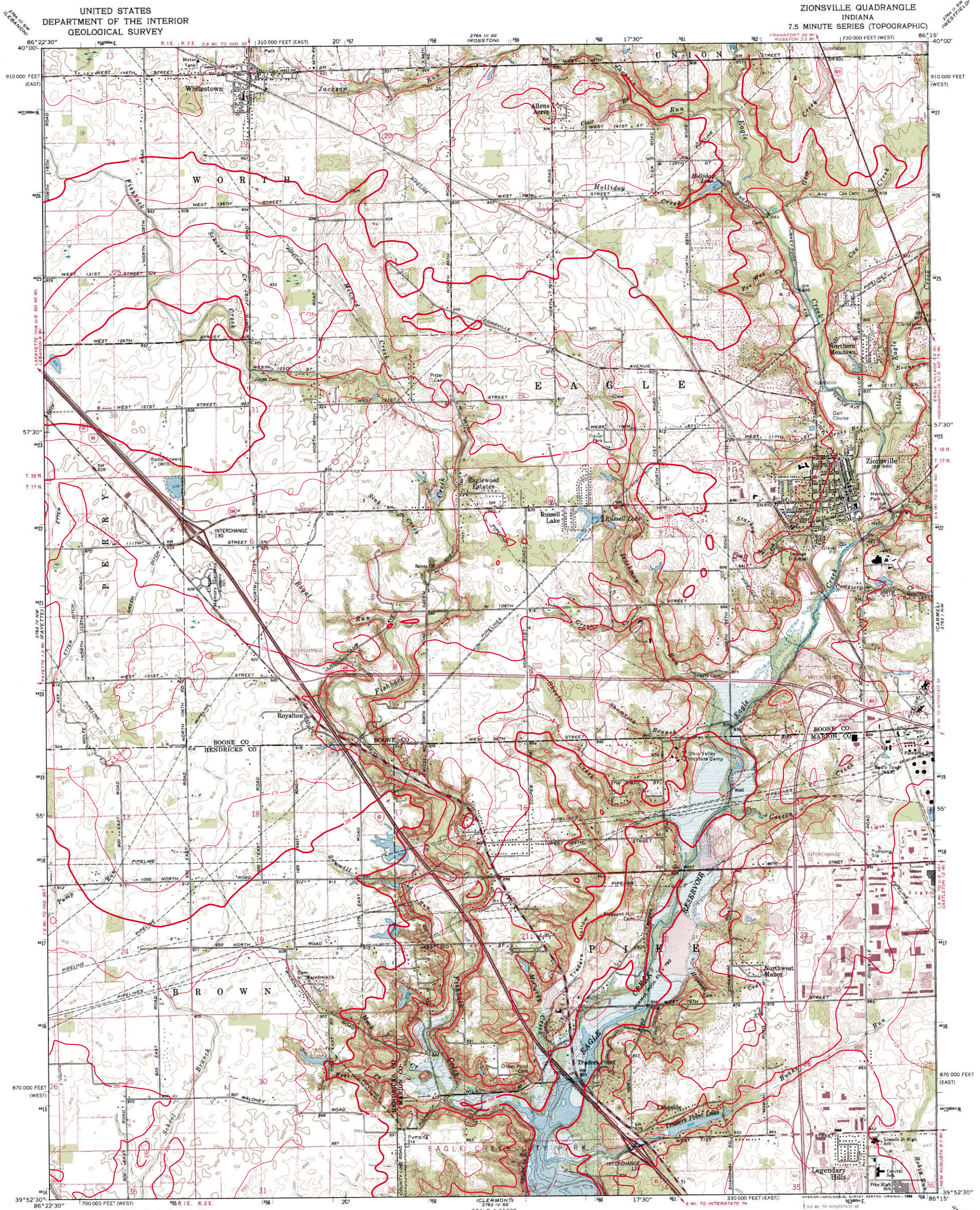
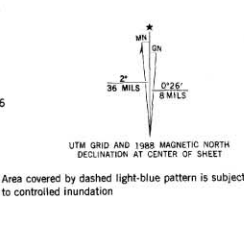


# THICKNESS OF UNCONSOLIDATED DEPOSITS OF ZIONSVILLE QUADRANGLE, INDIANA



Mapped, edited, and published by the Geological Survey  
 Revised in cooperation with State of Indiana  
 Department of Natural Resources  
 Control by USGS, NOS/NOAA, and Indiana Flood Control  
 and Water Resources Commission  
 Planimetry by photogrammetric methods from aerial photographs  
 taken 1952. Topography by planetable surveys 1953. Revised 1966  
 Polyconic projection. 1927 North American Datum  
 10,000-foot grid ticks based on Indiana coordinate system,  
 west and east zones  
 1000-meter Universal Transverse Mercator grid ticks,  
 zone 16, shown in blue  
 To place on the predicted North American Datum 1983  
 move the projection lines 1 meter south  
 as shown by dashed corner ticks



SCALE 1:24,000  
 CONTOUR INTERVAL 5 FEET  
 NATIONAL GEODETIC VERTICAL DATUM OF 1929  
 THIS MAP COMPLIES WITH NATIONAL MAP ACCURACY STANDARDS  
 FOR SALE BY U.S. GEOLOGICAL SURVEY, DENVER, COLORADO 80225 OR RESTON, VIRGINIA 22082,  
 AND INDIANA DEPARTMENT OF NATURAL RESOURCES, INDIANAPOLIS, INDIANA 46204  
 A FOLDER DESCRIBING TOPOGRAPHIC MAPS AND SYMBOLS IS AVAILABLE ON REQUEST

**ROAD CLASSIFICATION**  
 Heavy-duty ——— Light-duty ———  
 Medium-duty ——— Unimproved dirt ———  
 Interstate Route U.S. Route State Route  
**ZIONSVILLE, IND.**  
 39086-H3-TF-024  
 1966  
 PHOTOREVISED 1988  
 DMA 3763 IV NE—SERIES V851

This map was created by Glenn Grove, IDNR, Division of Water, Ground Water Section. The digital elevation grid of the  
 bedrock surface was subtracted from the grid of the land surface and the resultant grid contoured in ArcInfo. The land  
 surface elevation grid is from 1:24,000 scale digital topography by the U.S. Geological Survey, Reston, Virginia, 1999  
 and 2001. The bedrock surface elevation grid is from a digital map of the bedrock surface topography of Hendricks  
 County. The bedrock surface contouring was done by Marvin Thompson, IDNR, Division of Water, Ground Water Section, 1999  
 at a scale of 1:24,000. The bedrock contouring in Marion County was modified from Fleming and others, 1993.  
 Contour interval = 25 feet.

Map generated by Glenn E. Grove  
 IDNR, Division of Water, Ground Water Section  
 June 27, 2001

