

ADA Inspection Form

This is an inspection form and does NOT suggest full compliance.

Property Location/Name _____

Inspected by _____ Inspection Date/time _____

NOTE: Item # corresponds to diagrams on following pages.

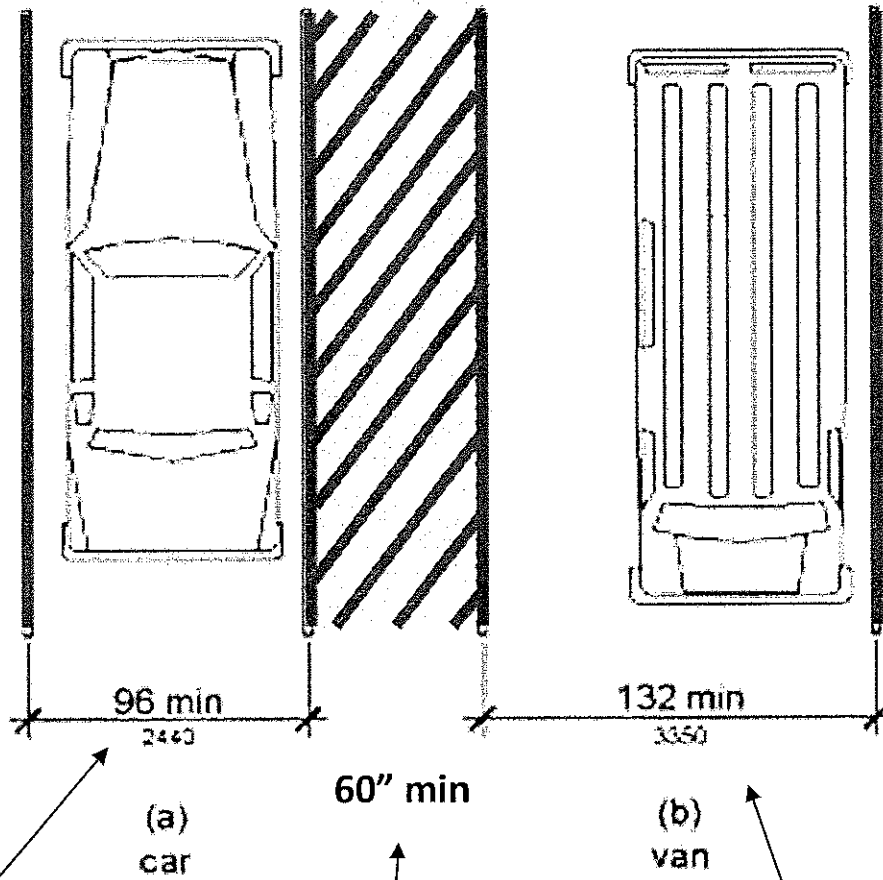
ITEM #	DESCRIPTION	GOOD	NEEDS REPAIR	COMMENTS
A.	Parking Space			
1	Vertical Sign (note height from bottom edge of sign)			
2	"Van Accessible" on sign			
3	Access aisle (60") / Vehicle space (96")			
4	Van space (132")			
5	Blue lines			
B.	Access Route			
6	36" minimum width			
7	Grades/cross slopes (5%/2%)			
8	Surface firm, stable and slip resistant			
9	Openings (1/2" max)			
10	Changes in level (1/2" max)			
C.	Doors			
11	Levered handle			
12	5lbf			
13	Signage on pull side			
14	32" min width			
D.	Restroom (WC)			
15	60" clearance			
16	Grab bars (side and back)			
17	Flush on wide side			
18	Toilet paper w/in reach			
19	Seat height (17-19")			
E.	Restroom (sink)			
20	Height 34" max			
21	Faucet handles			
22	Mirror reflecting surface height (40" max)			
23	Paper towel/dryer 48" height max			
F.	Maintained			
24	Clean/Working order			
25	Area free of litter and hazards			

Item #	ABATEMENT SECTION: Narrative of Action Taken	Date

Parking Space Inspection

1. Bottom edge of vertical sign(s) 60" from bottom of sign to pavement.

2. The words "Van Accessible" are on the sign of the space with the wider side.



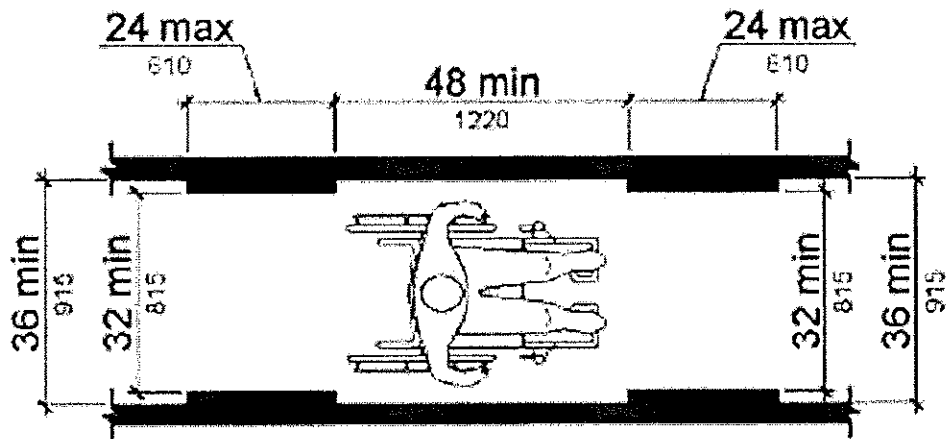
3. Accessible space 96" wide minimum and access aisle 60" minimum.

4. Van space is 132" minimum.

5. Space and access aisle marked with blue lines.

Access Route Inspection

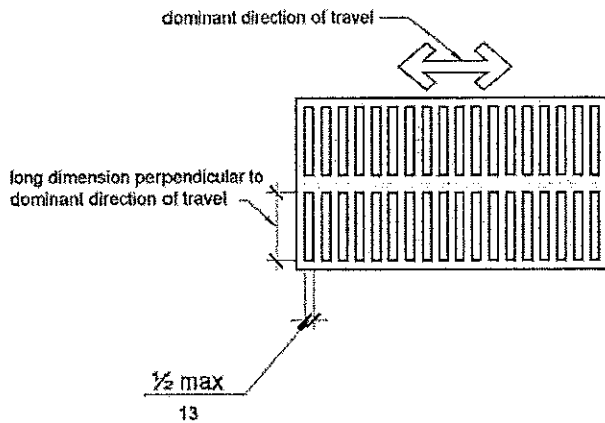
6. Minimum width should be 36", but can decrease to 32" for no longer than 24".



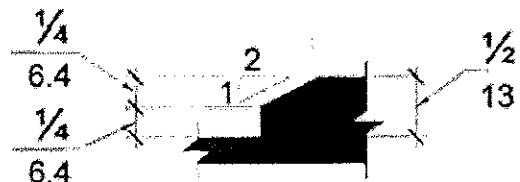
7. Grades and cross slopes shall not exceed 5% and 2% respectively.

8. Walking surfaces shall be firm, stable and slip resistant. (no large, loose stone.)

9. Openings along routes shall not exceed 1/2".



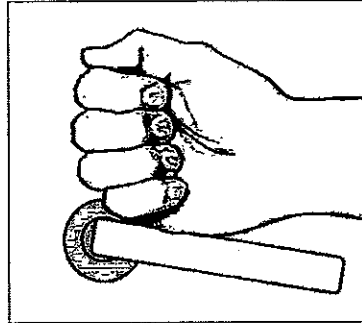
10. Changes in level cannot exceed 1/2".



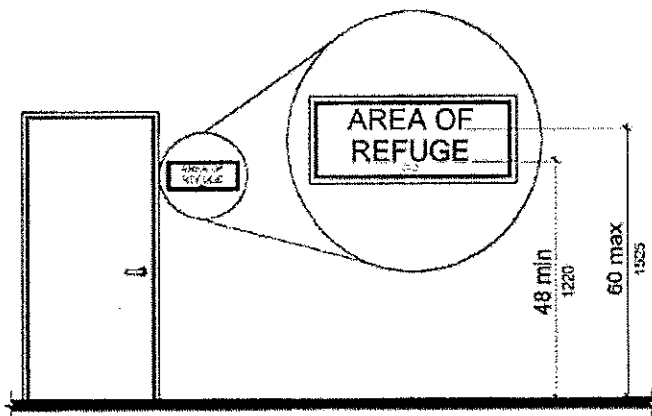
Doors Inspection

11. Either a levered knob or handle that can be operated with a closed fist.

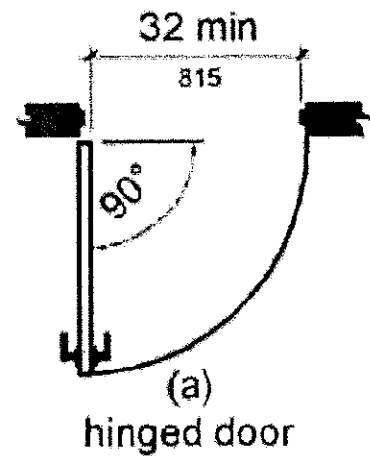
12. The door opening force cannot exceed 5 pounds of force unless it is a door with a powered opener.



13. Signage is to be located on the pull side no higher than 60" to the centerline of the sign.



14. Door openings shall not be less than 32".

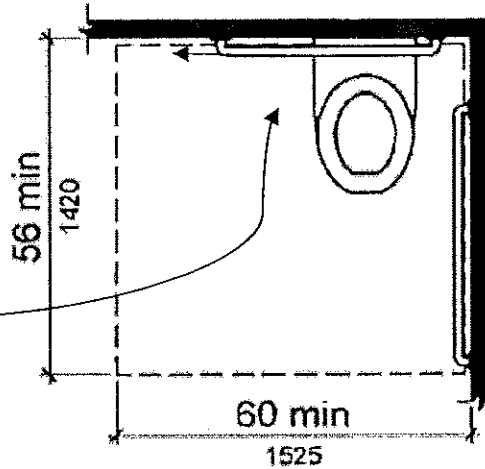


Restroom (Water Closet) Inspection

15. There needs to be a 56 x 60" clear space at the water closet.

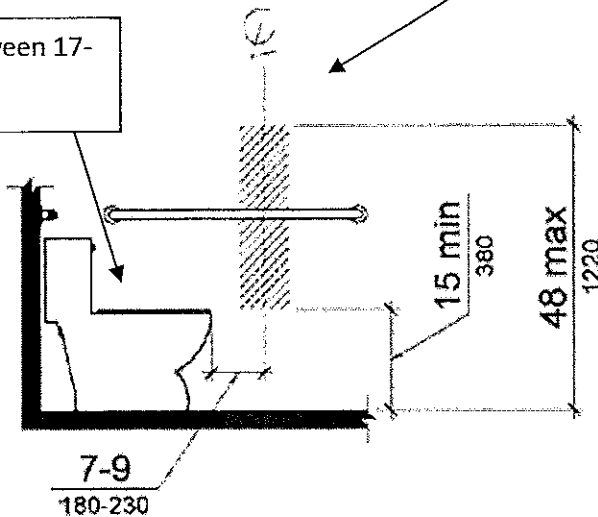
16. Are grab bars on the side and back of the stall (33 – 36" from the floor to the top of the bar surface)?

17. Is the flush handle on the wide side?

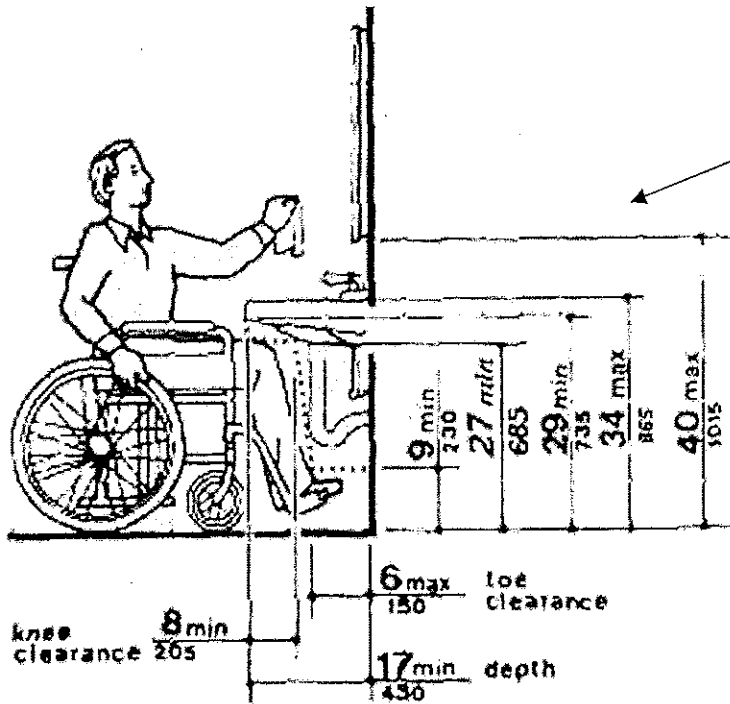


18. The toilet paper shall be within reach range.

19. The top of the toilet seat shall be between 17-19" from the floor.



Restroom (Sink) Inspection



20. The maximum sink height is 34"

21. Faucet handles should be levers, one-hand operation.

22. Reflecting surface of mirrors shall be no higher than 40".

23. Paper towels, dryers, controls shall be no higher than 48".

