

DDRS Advisory Council

October 16, 2019



Welcome and Today's Agenda

- Welcome and Introductions
- Vocational Rehabilitation Quarterly Update
- Quarterly Data Report and Review
- System Re-Design Updates
- System Re-Design Priorities Discussion
- Next Meeting: November 20th



Vocational Rehabilitation Quarterly Updates

Presented by:
Theresa Koleszar, Director
Bureau of Rehabilitation Services

DDRS Advisory Council
October 16, 2019



Comprehensive Statewide Needs Assessment

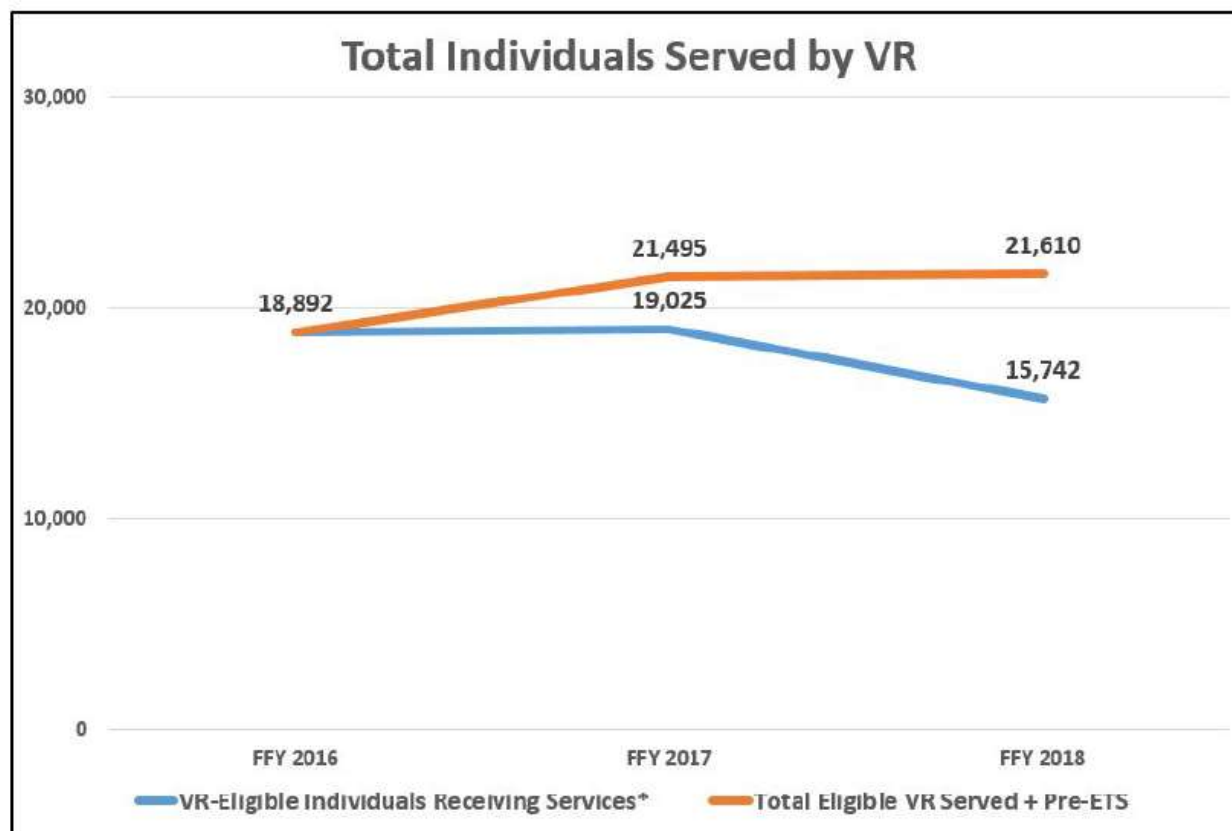
Total Served – VR and Pre-ETS

	*VR eligible individuals receiving services	**VR eligible individuals deferred under an order of selection	Pre-ETS potentially eligible students (no IPE)	Total VR eligible + Pre-ETS	Total eligible VR served + Pre-ETS
FFY2016	18,892	0	0	18,892	18,892
FFY2017	19,025	441	2,470	21,936	21,495
FFY2018	15,742	1,458	5,868	23,068	21,610

**Includes individuals in all service priority categories receiving services under IPE upon implementation of order of selection who continued to be served after implementation.*

***VR implemented an order of selection during the last 2 months of FFY2017, on August 1, 2017.*

Comprehensive Statewide Needs Assessment



Comprehensive Statewide Needs Assessment

Total Served By Age

	FFY2016		FFY2017		FFY2018	
14-24 yrs	6,577	34.8%	6,854	36.0%	6,246	39.7%
25-35 yrs	3,299	17.5%	3,209	16.9%	2,849	18.1%
36-46 yrs	2,895	15.3%	2,792	14.7%	2,305	14.6%
47-57 yrs	3,570	18.9%	3,453	18.1%	2,636	16.7%
58-68 yrs	1,977	10.5%	2,097	11.0%	1,410	9.0%
69+ yrs	574	3.0%	620	3.3%	296	1.9%

Increase in individuals under age 35 served, and decrease in individuals over age 35

Comprehensive Statewide Needs Assessment

Individuals served by disability compared to successful closure by disability

	2016			2017			2018		
	Served	Success	Gap	Served	Success	Gap	Served	Success	Gap
Developmental disability	31.1%	25.4%	-5.7%	31.5%	24.6%	-6.9%	34.6%	29.0%	-5.6%
Mental Illness	25.8%	19.1%	-6.9%	25.6%	16.9%	-8.7%	28.3%	19.9%	-8.4%
Other disability	0.9%	0.7%	-0.2%	1.2%	0.8%	-0.4%	1.4%	0.9%	-0.5%
Physical disability	20.7%	15.4%	-5.3%	20.1%	14.4%	-5.7%	20.1%	16.3%	-3.8%
Sensory disability hearing	13.9%	33.3%	19.4%	14.4%	34.1%	19.7%	9.1%	29.0%	19.9%
Sensory disability vision	7.6%	6.1%	-1.5%	7.2%	9.0%	1.8%	6.5%	4.9%	-1.6%

Comprehensive Statewide Needs Assessment

VR Services Expenditures by Category

	FFY2016	FFY2017	FFY2018
Assessment	\$3,386,554	\$3,443,708	\$3,619,813
Restoration and Prosthetic or Orthotic Appliances	\$1,147,852	\$1,797,538	\$1,120,809
Training and School	\$8,864,109	\$8,696,165	\$7,175,757
Employment Services	\$13,863,286	\$15,680,994	\$16,353,666
Reader, Interpreter and Personal Assistance Services	\$1,432,902	\$1,157,690	\$1,209,009
Living Expenses	\$3,102,430	\$3,547,056	\$2,906,592
Rehabilitation Technology	\$8,783,790	\$11,053,366	\$7,480,248
Other	\$1,743,915	\$1,447,535	\$1,314,832
Total	\$42,324,837	\$46,824,052	\$41,180,725
Difference from prior year		\$4,499,215 10.6%	(\$5,643,327) -12.1%

Comprehensive Statewide Needs Assessment

Average Annual Cost Per Eligible VR Participant Served Under an IPE

	Total served	Total case service spending	Average cost	Difference in average cost from prior year	
FFY2016	18,892	\$42,324,837	\$2,240.36		
FFY2017	19,025	\$46,824,052	\$2,461.19	\$220.83	9.9%
FFY2018	15,742	\$41,180,725	\$2,615.98	\$154.79	6.3%

While total client services expenses decreased, the average cost per participant increased

Order of Selection

- Implemented August 1, 2017
- Rehabilitation Act (federal law) requires that individuals with the most significant disabilities (priority category 1) are prioritized to receive VR services
- 3 priority categories

Disability Severity	Priority	Status
Most significant disability (MSD)	Priority category 1	Open
Significant disability (SD)	Priority category 2	Closed – services delayed
All other eligible	Priority category 3	Closed – services delayed

Order of Selection

- Approximately 80% of VR eligible individuals meet criteria for priority category 1 and receive services without delay
- As of August 31, 2019, 2,582 eligible individuals are assigned to priority categories 2 and 3 and are in delayed services status.
 - 71% are in priority category 2
 - 29% are in priority category 3

Order of Selection

Deferred by Primary Impairment

Primary Impairment	# as of 8/31/19	% of total deferred
Vision	94	3.6%
Hearing	815	31.6%
Physical	734	28.4%
Cognitive	348	13.5%
Mental Illness	574	22.2%
Other	17	0.7%
TOTAL	2582	

Deferred by Cause (Cognitive Impairment ONLY)

Learning disability	5.9%
Intellectual/Developmental disability	2.9%
ADHD	2%
Unknown	0.7%
Autism	0.7%
TBI	0.4%
Congenital	0.2%
Depression/Mood disorder	0.2%
Physical conditions	0.1%
Stroke	0.1%
Epilepsy	0.1%

Sequential Steps to Move Out of an Order of Selection

5-step process to move out of an order of selection as sufficient staffing and fiscal resources become available



Staffing Capacity

Challenge: 20-25% of VR Counselor positions are generally vacant or filled with new staff in training at any given time; demands on staff have increased with implementation of WIOA; increased emphasis on timeliness standards.

- New VR Counselors are in training for a minimum of 6-9 months before they are able to independently work a caseload.
- Recruitment of VR Counselors is a significant challenge and it often takes months to find a qualified candidate to fill a vacancy.

Staffing Capacity Update:

- Added 10 Youth VR Counselor positions to carry out federally required Pre-Employment Transition Services
- Staff recognition opportunities (e.g. spot bonuses)
- IT System modernization
- Streamlined communication to field staff
- Staff salary adjustments implemented in September 2019

Fiscal Capacity

Challenge: 15% of funding is required to be earmarked for Pre-Employment Transition services; average cost per participant is increasing

Fiscal Update:

- Establishment projects continue through March, 2021 which increases the amount of federal funds Indiana VR can draw
- Blended funding with DWD to carry out Pre-Employment Transition services through the Jobs for America's Graduates program
- IT System Modernization
- Review of VR rules to identify opportunities for streamlining and cost savings
- While less VR participants were served under IPE in the last FFY, more individuals were served overall when accounting for students receiving Pre-ETS. This aligns with the shift in funding under WIOA.

Capacity Building Next Steps

- VR Rule Promulgation
- Annual review of fiscal and staffing resources, outlined in the state plan
- Exploring opportunity to expand services under MOU with DWD to carry out Pre-Employment Transition Services through the Jobs for America's Graduates Program
- Exploring additional cost savings and streamlining efforts such as bringing coordination of interpreting services in-house, and prioritizing contractual services
- Exploring increased opportunities for utilizing interns in VR field offices
- Continued evaluation of staffing needs in each office, and ongoing adjustment of service areas and staff distribution among field offices

Quarterly Data Report & Review

Presented by:
Julie Reynolds, DDRS Director of Strategic Initiatives

DDRS Advisory Council
October 16, 2019

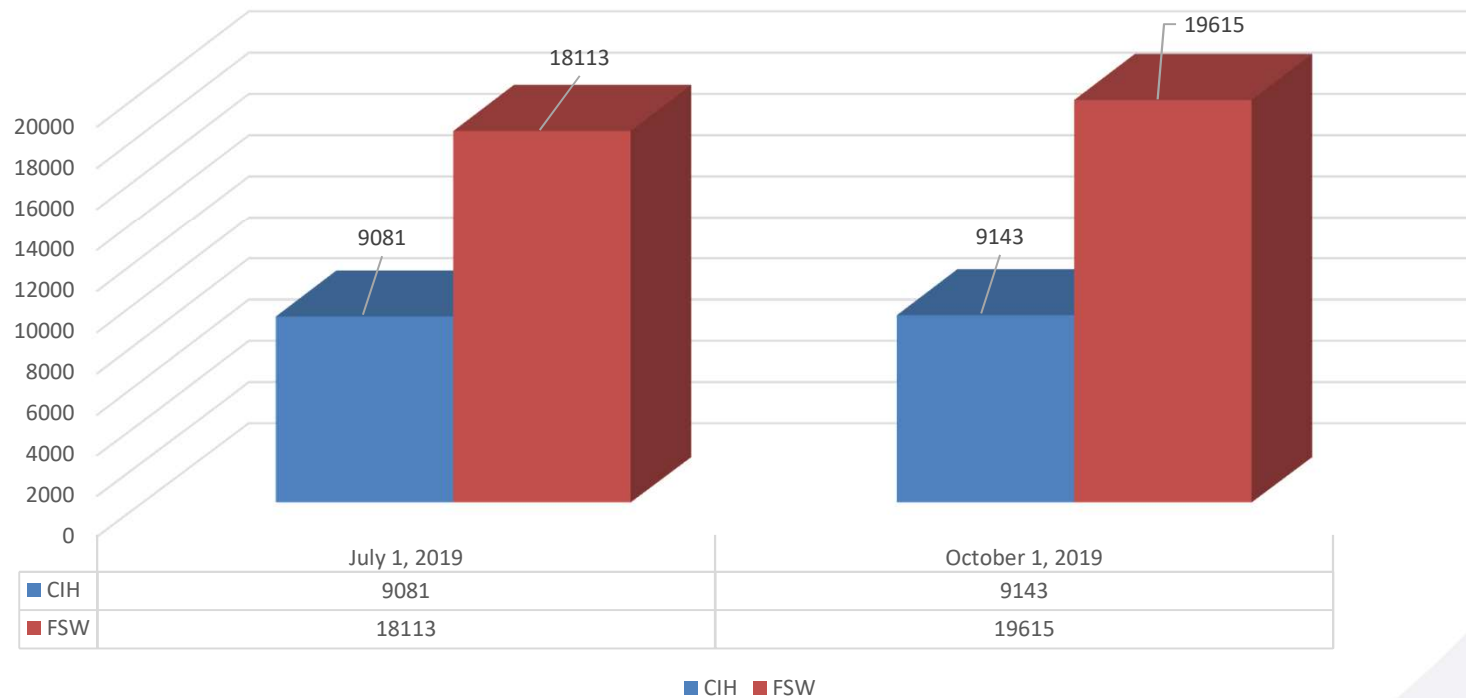


How DDRS/BDDS Calculates Number of Individuals Supported

One Day Count - the number of individuals enrolled on the specific day. This is the most accurate method to get a truly unduplicated count of the number of people enrolled to receive waiver services. This information comes from the BDDS Portal Database.



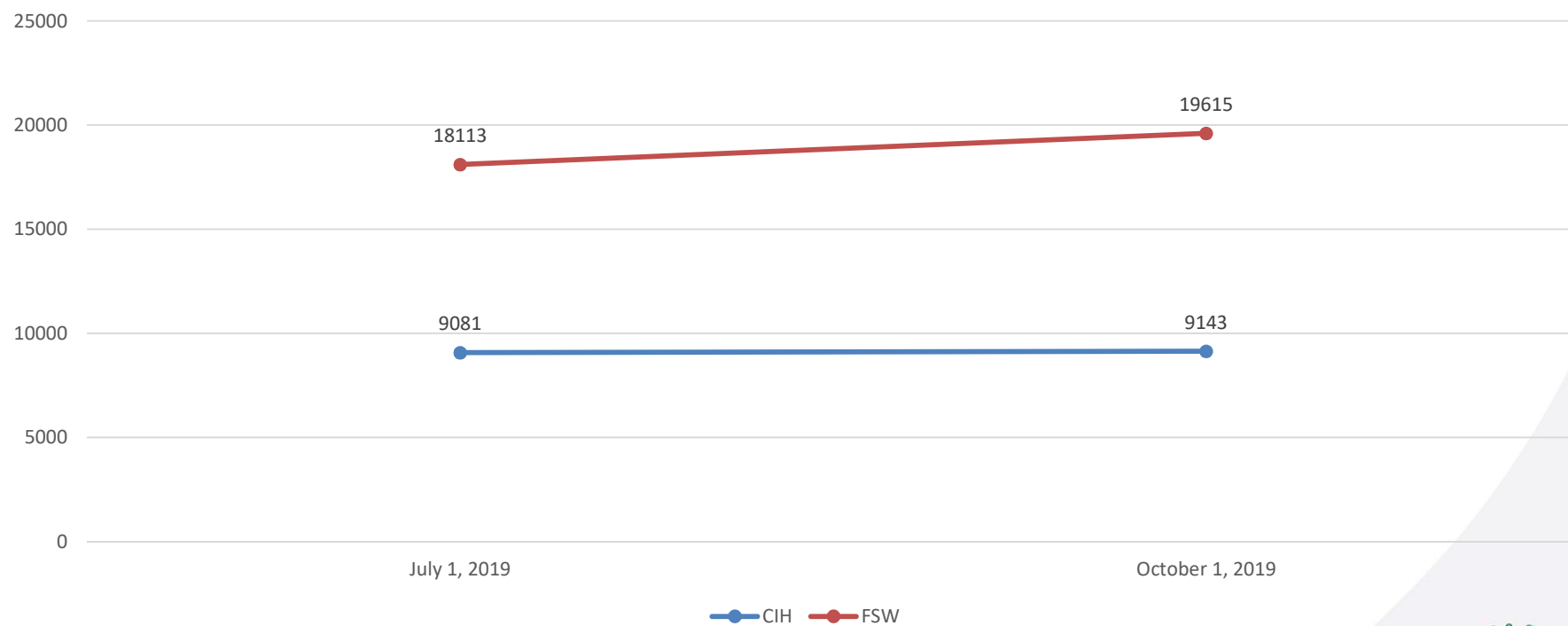
Number of Individuals on BDDS Waivers One Day Count - Enrollment Quarterly Comparison



Source: BDDS Portal



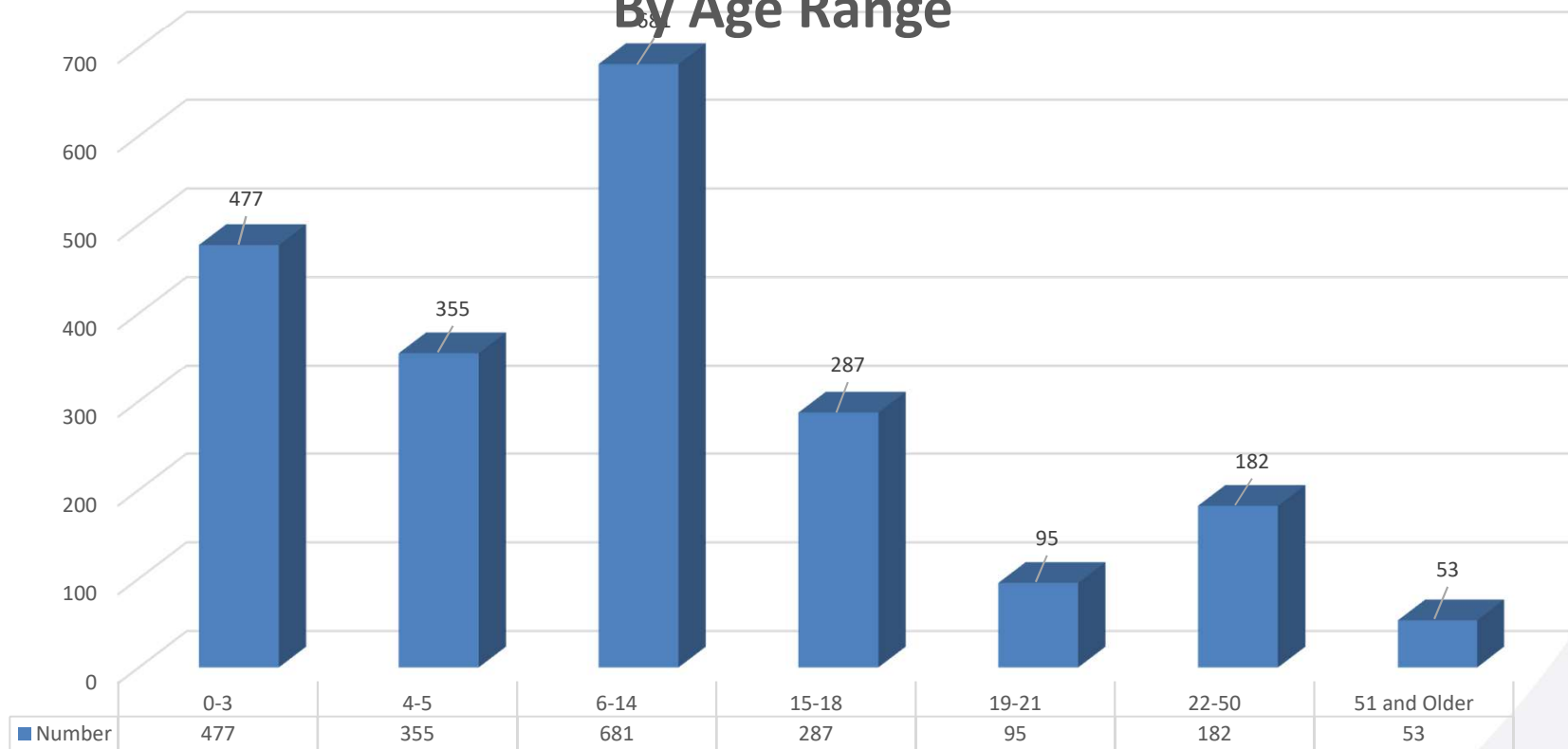
Number of Individuals on BDDS Waivers One Day Count - Enrollment Quarterly Comparison



Source: BDDS Portal



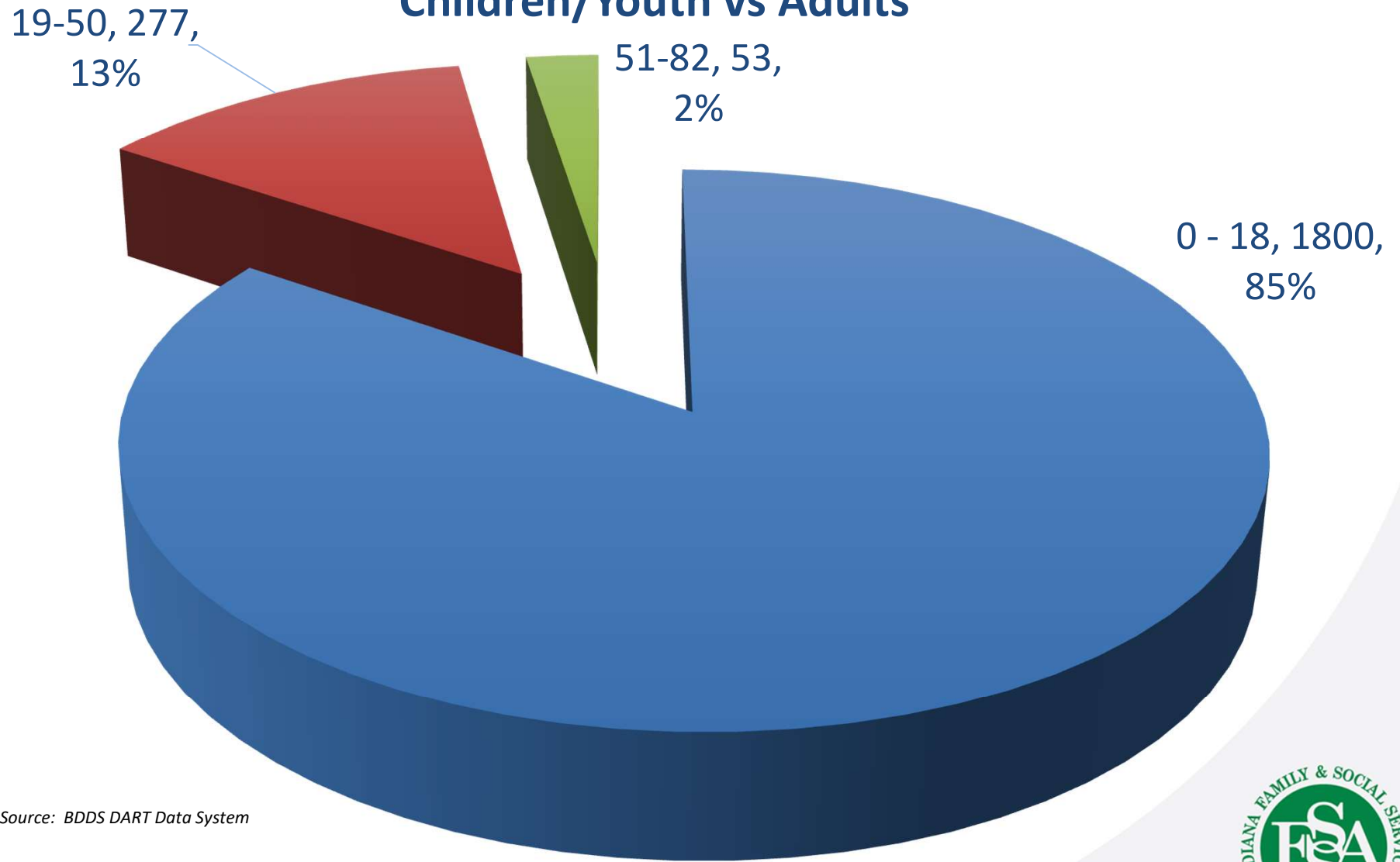
Number on FSW Waiting List By Age Range



Source: BDDS DART Data System



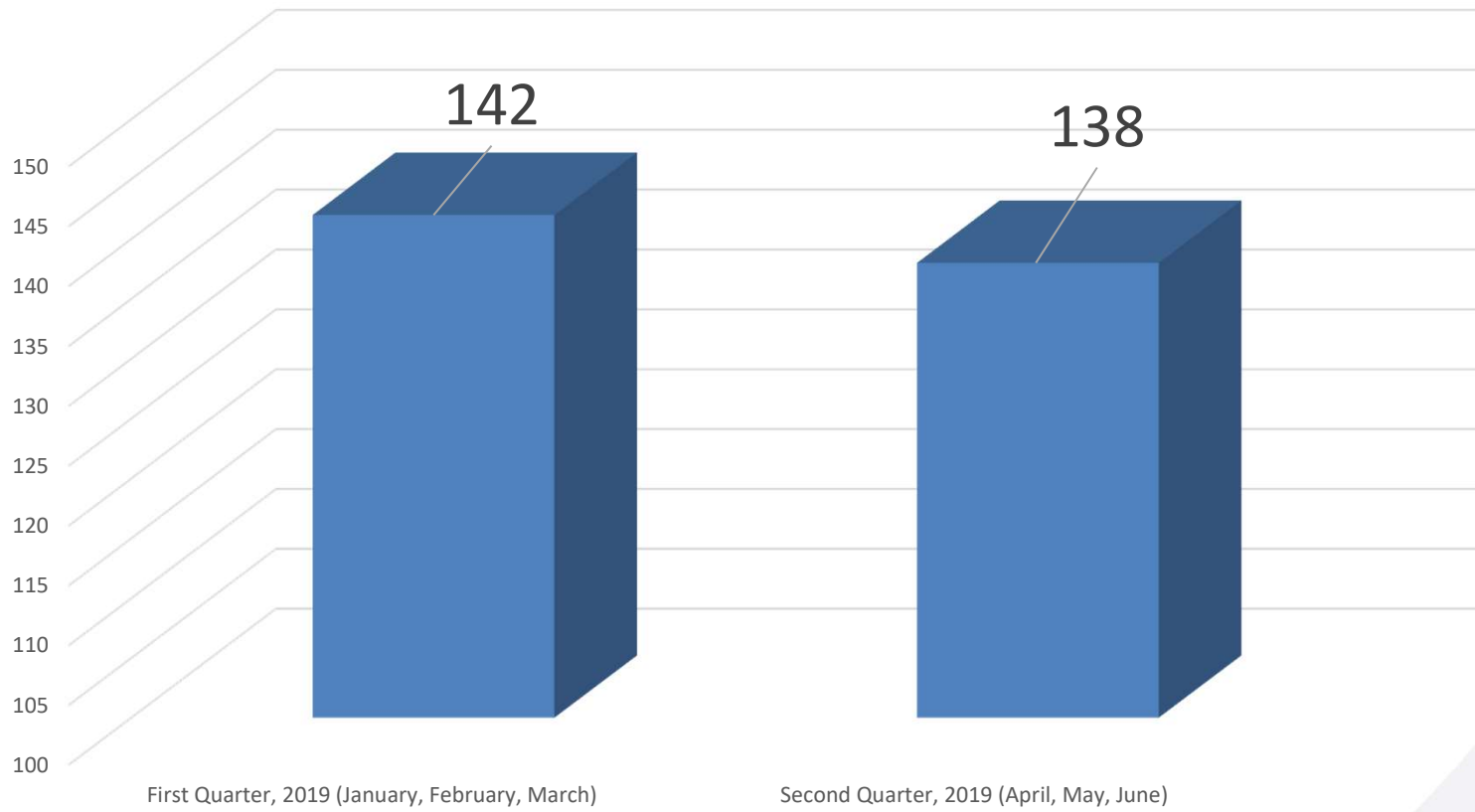
Number on FSW Waiting List Children/Youth vs Adults



Source: BDDS DART Data System



Number of CIH Applications for Emergency Placement



Source: BDDS DART Data System



System Re-Design Updates

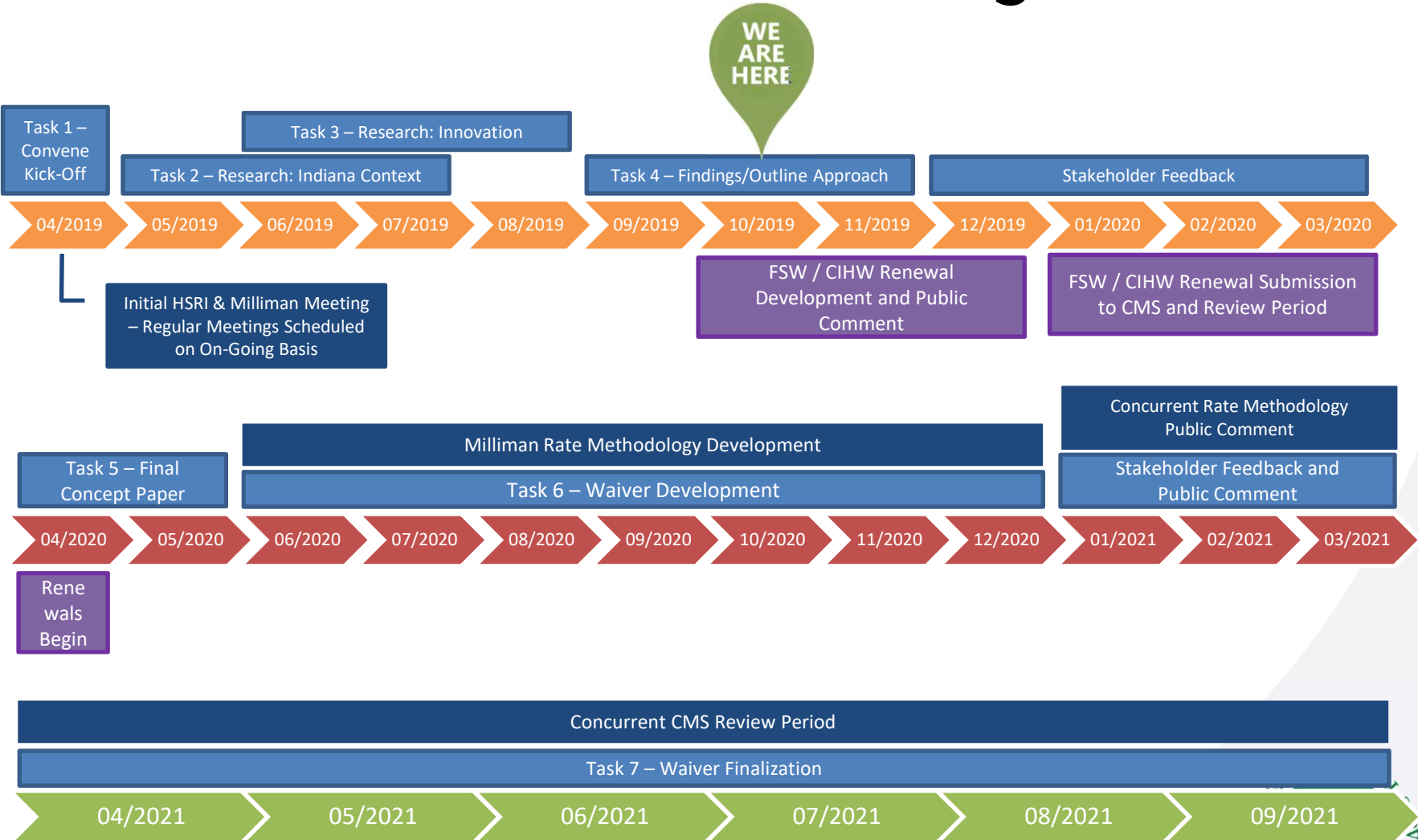


System Re-Design Updates

- Waiver Re-Design
- Employment Array
- Institutional Modernization
- Living Well



Waiver Re-Design Timeline



For Discussion Purposes – Timeline Subject to Change

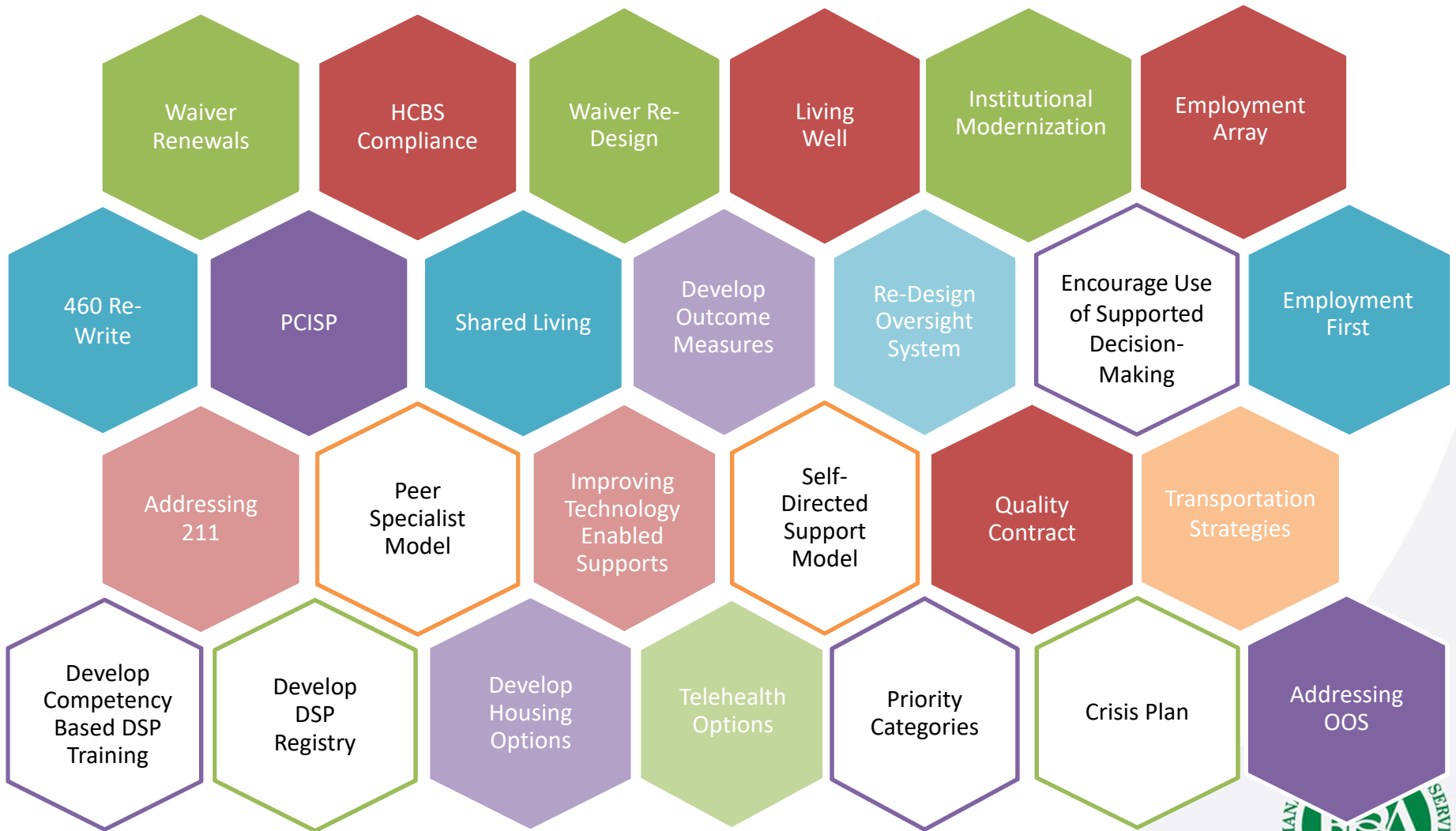


System Re-Design Updates

- Waiver Re-Design
- Employment Array
- Institutional Modernization
- Living Well



System Re-Design Priorities



DDRS Advisory - Next Meeting

- Next Meeting:
 - Wednesday, November 20th
 - 2:30 pm - 4:30 pm
 - Location TBD

