



DIVISION OF FAMILY RESOURCES

Monthly Management Report March 2019

State of Indiana

Eric Holcomb
Governor

Family and Social Services Administration

Jennifer Walthall, M.D.
Secretary

Division of Family Resources

Adrienne Shields
Director

For questions regarding data on this report contact:
office.Communications@fssa.IN.gov



State of Indiana

Published April 2019



DIVISION OF FAMILY RESOURCES

Monthly Management Report

Reporting Month: March 2019

Location: Statewide

TEMPORARY ASSISTANCE FOR NEEDY FAMILIES (TANF)

Child-Only and One-Parent Families	Mar 31, 2019	February 2019	March 2018	Annual Change
Number of families receiving TANF Grants	5,329	5,543	6,352	-16.11%
Total number of grant recipients	10,971	11,451	13,196	-16.86%
Number of adult grant recipients	1,443	1,562	1,903	-24.17%
Number of child grant recipients	9,528	9,889	11,293	-15.63%
Total payments	\$1,021,102	\$1,063,113	\$1,232,151	-17.13%
Average payment per case	\$191.61	\$191.79	\$193.98	-1.22%
Average payment per recipient	\$93.07	\$92.84	\$93.37	-0.32%
Number of cases with benefits reduced to zero	68	74	98	-30.61%
Number of recipients with benefits reduced to zero	150	151	218	-31.19%
Number of adult recipients with benefit reduced to zero	31	36	55	-43.64%
Number of child recipients with benefit reduced to zero	119	115	163	-26.99%

Two-Parent Families	Mar 31, 2019	February 2019	March 2018	Annual Change
Number of families receiving TANF Grants	225	228	277	-18.77%
Total number of grant recipients	844	880	1,073	-21.34%
Number of adult grant recipients	302	310	382	-20.94%
Number of child grant recipients	542	570	691	-21.56%
Total payments	\$48,547	\$50,125	\$61,931	-21.61%
Average payment per case	\$215.76	\$219.85	\$223.58	-3.49%
Average payment per recipient	\$57.52	\$56.96	\$57.72	-0.34%
Number of cases with benefits reduced to zero	6	5	5	20.00%
Number of recipients with benefits reduced to zero	25	19	18	38.89%
Number of adult recipients with benefit reduced to zero	8	6	8	0.00%
Number of child recipients with benefit reduced to zero	17	13	10	70.00%

Note:

All data July 2014 and following will be broken out according to the new DFR region structure effective July 1 2014.

Source:



DIVISION OF FAMILY RESOURCES

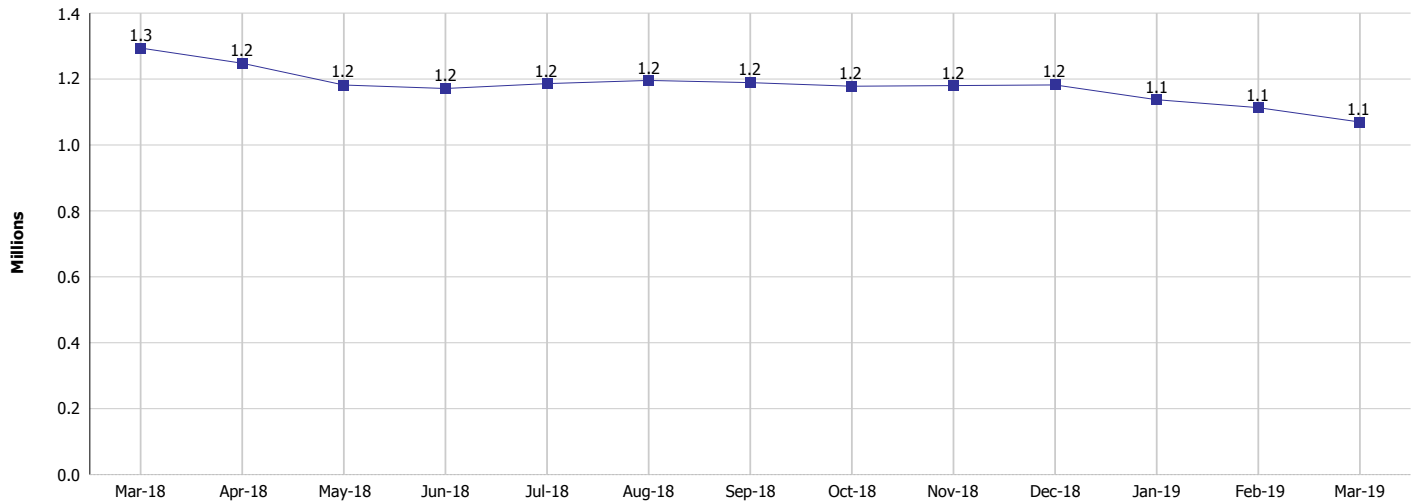
Monthly Management Report

Reporting Month: March 2019

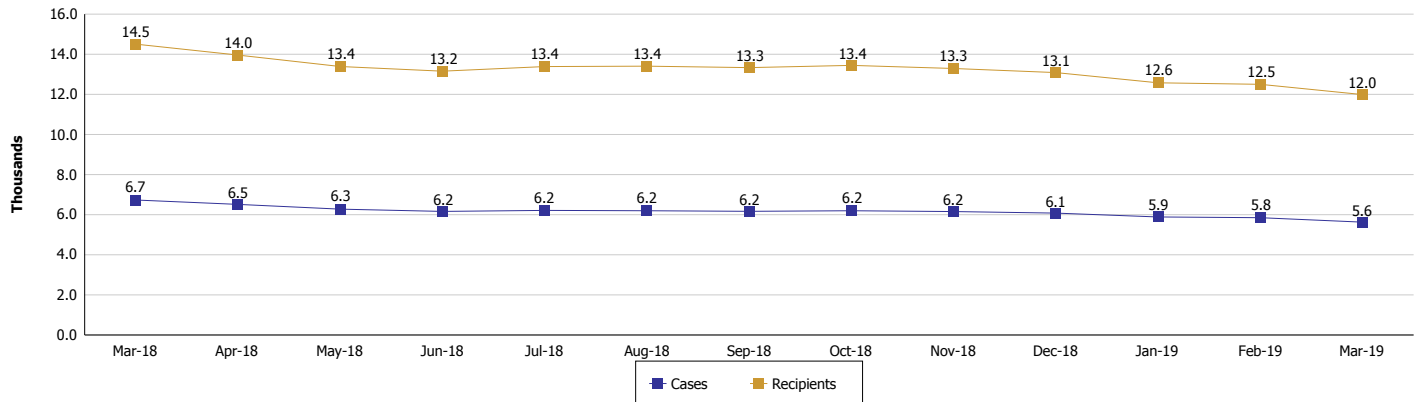
Location: Statewide

TEMPORARY ASSISTANCE FOR NEEDY FAMILIES (TANF)

TANF Cash Assistance
(TANF Regular and TANF Two-Parent)



TANF Cases and Recipients
(TANF Regular and TANF Two-Parent)



Note:

All data July 2014 and following will be broken out according to the new DFR region structure effective July 1 2014.



DIVISION OF FAMILY RESOURCES

Monthly Management Report

Reporting Month: March 2019

Location: Statewide

SUPPLEMENTAL NUTRITION ASSISTANCE PROGRAM (SNAP)

	March 2019	February 2019	March 2018	Annual Change
Total issuance	\$68,613,006	\$69,816,407	\$72,567,119	-5.45%
Number of households receiving SNAP benefits	263,909	269,008	276,316	-4.49%
Number of recipients	586,388	598,234	619,110	-5.29%
Average issuance per household	\$259.99	\$259.53	\$262.62	-1.00%
Average issuance per recipient	\$117.01	\$116.70	\$117.21	-0.17%

Note:

All data July 2014 and following will be broken out according to the new DFR region structure effective July 1 2014.

SNAP ERROR RATES

	November 2018	October 2018	Cumulative FFY 2018
FFY Cumulative Positive Error Rate	11.20%	7.21%	6.10%
Monthly Positive Error Rate	15.06%	7.21%	NA
FFY Cumulative Negative Error Rate	36.36%	37.14%	39.94%
Monthly Negative Error Rate	35.48%	37.14%	NA

Note:

All data July 2014 and following will be broken out according to the new DFR region structure effective July 1 2014.

Notes:

Reporting periods for SNAP Error Rates reflect the review period and Federal submission deadline. The month reported above is the month in which an action was taken included in the review sample.

Positive actions are those which produced an issuance of benefits to a household. Negative actions are those which closed or denied benefits to a household.

Error Rate data is reported by the state before the federal agency has accepted and finalized the results. This rate is subject to revision based upon: completion and submission of outstanding reviews; final review corrections; and completion of previously dropped reviews. Monthly numbers are taken from end-of-month totals. The error status of cases may be changed by the State or Federal Review process, which would cause a change that might not be reflected in the previous monthly numbers.



DIVISION OF FAMILY RESOURCES

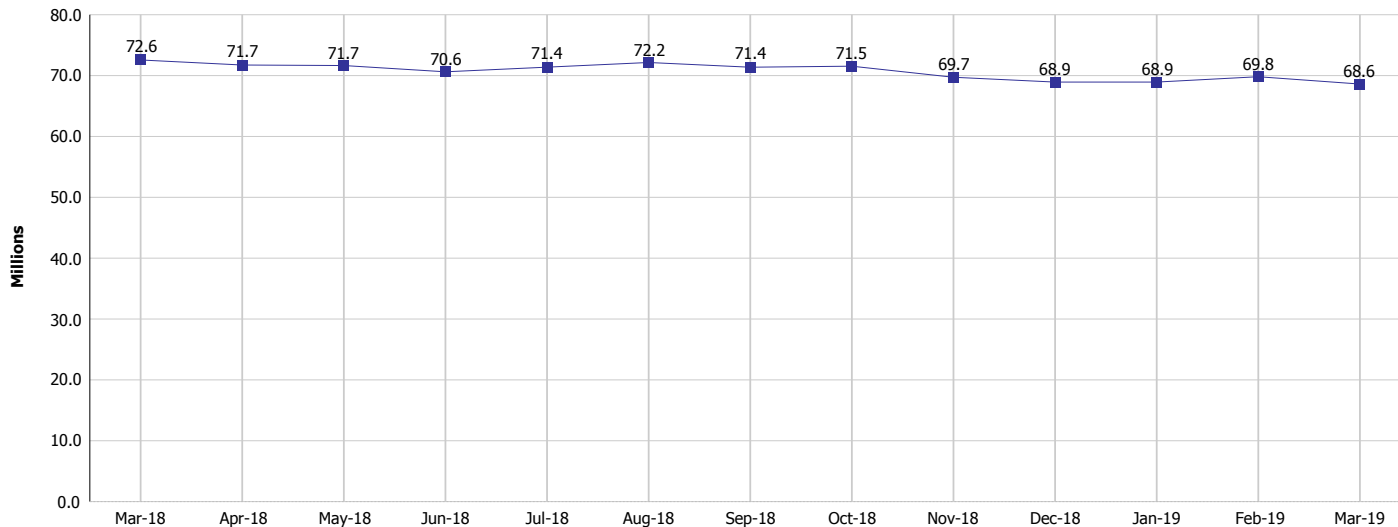
Monthly Management Report

Reporting Month: March 2019

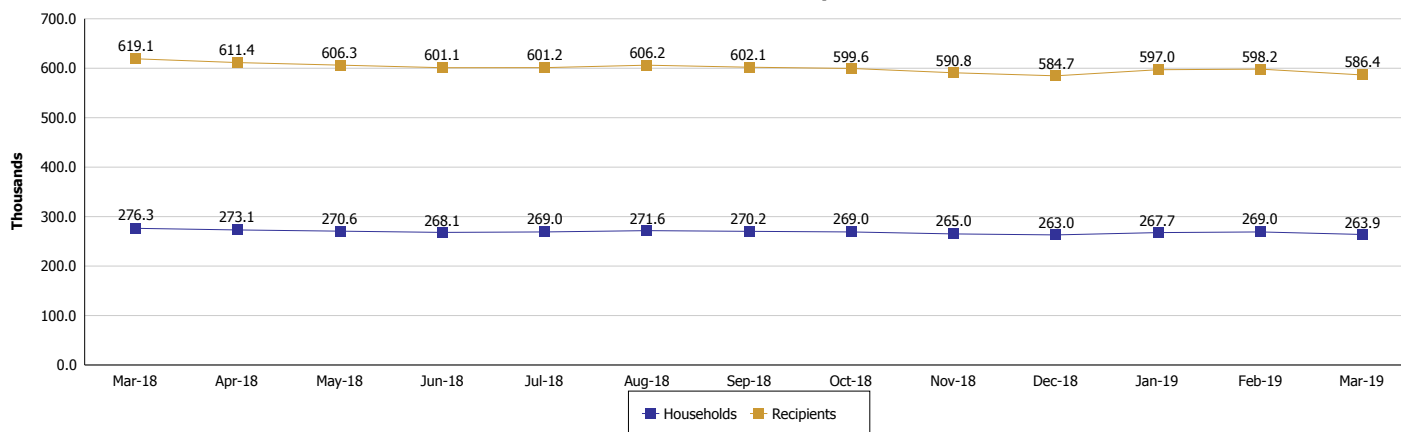
Location: Statewide

SUPPLEMENTAL NUTRITION ASSISTANCE PROGRAM (SNAP)

SNAP Issuance



SNAP Households and Recipients



Note:

All data July 2014 and following will be broken out according to the new DFR region structure effective July 1 2014.



DIVISION OF FAMILY RESOURCES

Monthly Management Report

Reporting Month: March 2019

Location: Statewide

HIP 2.0 and SNAP

	March 2019	February 2019	March 2018	Annual Change
Total HIP 2.0 Members	429,610	427,832	443,120	-3.05%
HIP Members also SNAP Recipients	142,767	143,745	145,335	-1.77%
Percentage HIP Members SNAP Recipients	33.2%	33.6%	32.8%	-2.50%
HIP Members SNAP ABAWDs	5,081	5,250	3,791	34.03%
Percentage HIP Members SNAP ABAWDs	1.2%	1.2%	0.9%	-2.50%

Note:

All data July 2014 and following will be broken out according to the new DFR region structure effective July 1 2014.



DIVISION OF FAMILY RESOURCES

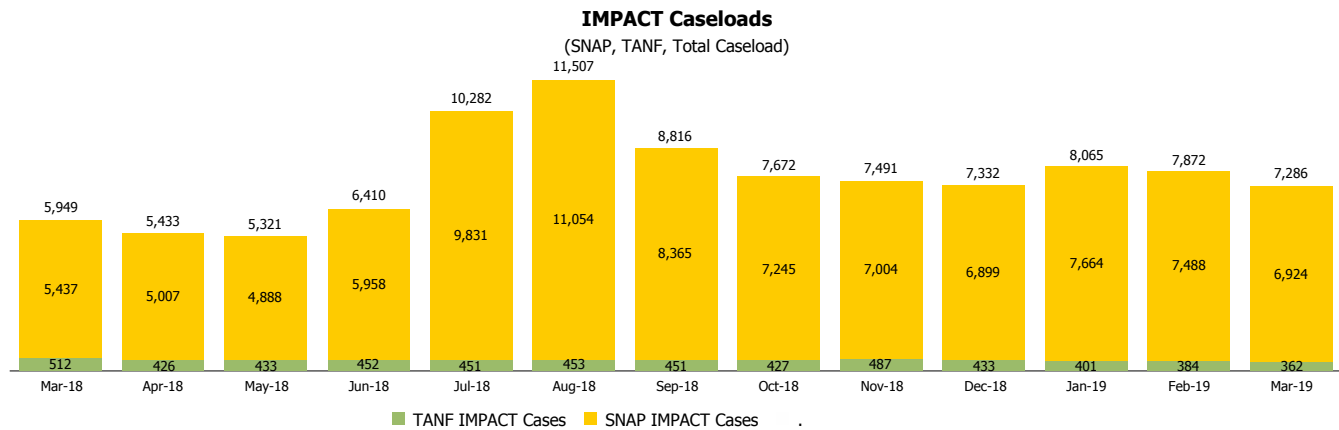
Monthly Management Report

Reporting Month: March 2019

Location: Statewide

INDIANA MANPOWER PLACEMENT AND COMPREHENSIVE TRAINING (IMPACT)

	March 2019	February 2019	March 2018	Annual Change
Number of IMPACT cases	7,286	7,872	5,949	22.47%
Number of TANF IMPACT adults	362	384	512	-29.30%
Number of SNAP IMPACT Cases	6,924	7,488	5,437	27.35%
Total number of adults employed	1,136	987	1,114	1.97%
Number of TANF IMPACT adults newly employed (within past 30 days)	84	64	106	-20.75%
Number of SNAP IMPACT adults employed	1,052	923	1,008	4.37%
Total number of adults ineligible due to employment	4,833	4,164	5,168	-6.48%
Number of TANF adults ineligible due to employment	16	14	15	6.67%
Number of SNAP adults ineligible due to employment	4,817	4,150	5,153	-6.52%



Note:

All data July 2014 and following will be broken out according to the new DFR region structure effective July 1 2014.