



## DIVISION OF FAMILY RESOURCES

# Monthly Management Report October 2019

### State of Indiana

Eric Holcomb  
Governor

### Family and Social Services Administration

Jennifer Walthall, M.D.  
Secretary

### Division of Family Resources

Adrienne Shields  
Director

For questions regarding data on this report contact:  
[office.Communications@fssa.IN.gov](mailto:office.Communications@fssa.IN.gov)



## State of Indiana

Published November 2019



## DIVISION OF FAMILY RESOURCES

### Monthly Management Report

Reporting Month: October 2019

Location: Statewide

#### TEMPORARY ASSISTANCE FOR NEEDY FAMILIES (TANF)

Child-Only and One-Parent Families	Oct 31, 2019	September 2019	October 2018	Annual Change
Number of families receiving TANF Grants	5,255	5,159	5,783	-9.13%
Total number of grant recipients	11,006	10,679	12,090	-8.97%
Number of adult grant recipients	1,534	1,465	1,667	-7.98%
Number of child grant recipients	9,472	9,214	10,423	-9.12%
Total payments	\$1,033,389	\$984,146	\$1,132,466	-8.75%
Average payment per case	\$196.65	\$190.76	\$195.83	0.42%
Average payment per recipient	\$93.89	\$92.16	\$93.67	0.24%
Number of cases with benefits reduced to zero	1,362	59	176	673.86%
Number of recipients with benefits reduced to zero	1,076	124	453	137.53%
Number of adult recipients with benefit reduced to zero	37	27	110	-66.36%
Number of child recipients with benefit reduced to zero	1,039	97	343	202.92%

Two-Parent Families	Oct 31, 2019	September 2019	October 2018	Annual Change
Number of families receiving TANF Grants	231	233	229	0.87%
Total number of grant recipients	868	885	866	0.23%
Number of adult grant recipients	310	319	306	1.31%
Number of child grant recipients	558	566	560	-0.36%
Total payments	\$54,955	\$55,015	\$45,731	20.17%
Average payment per case	\$237.90	\$236.12	\$199.70	19.13%
Average payment per recipient	\$63.31	\$62.16	\$52.81	19.89%
Number of cases with benefits reduced to zero	53	4	9	488.89%
Number of recipients with benefits reduced to zero	53	20	37	43.24%
Number of adult recipients with benefit reduced to zero	10	7	13	-23.08%
Number of child recipients with benefit reduced to zero	43	13	24	79.17%

**Note:**

All data July 2014 and following will be broken out according to the new DFR region structure effective July 1 2014.

Source:



## DIVISION OF FAMILY RESOURCES

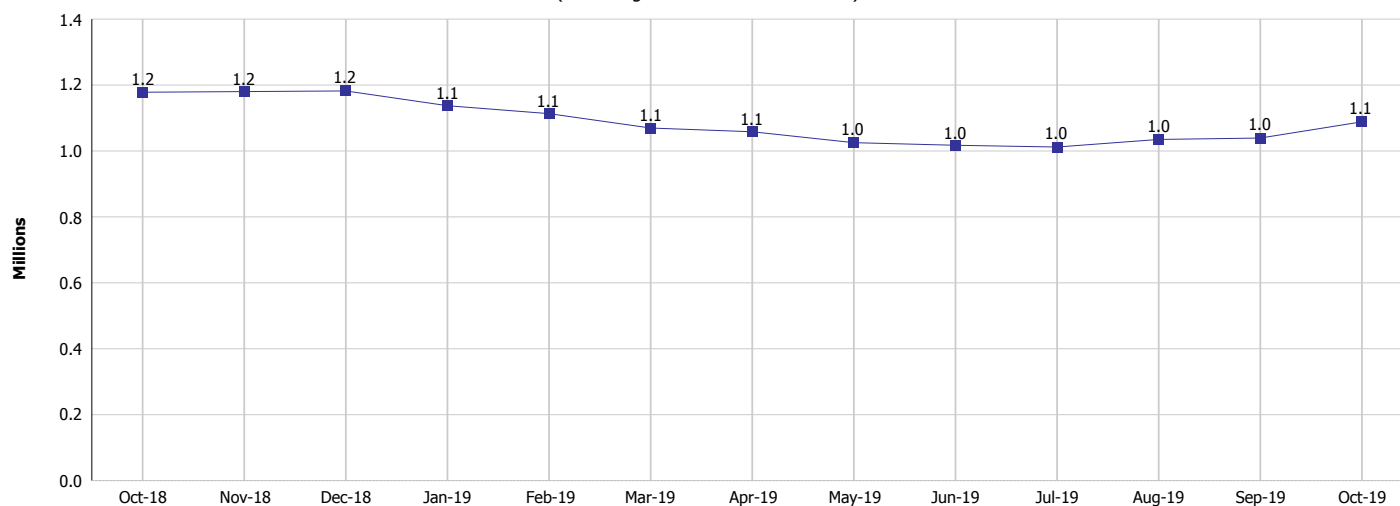
### Monthly Management Report

Reporting Month: October 2019

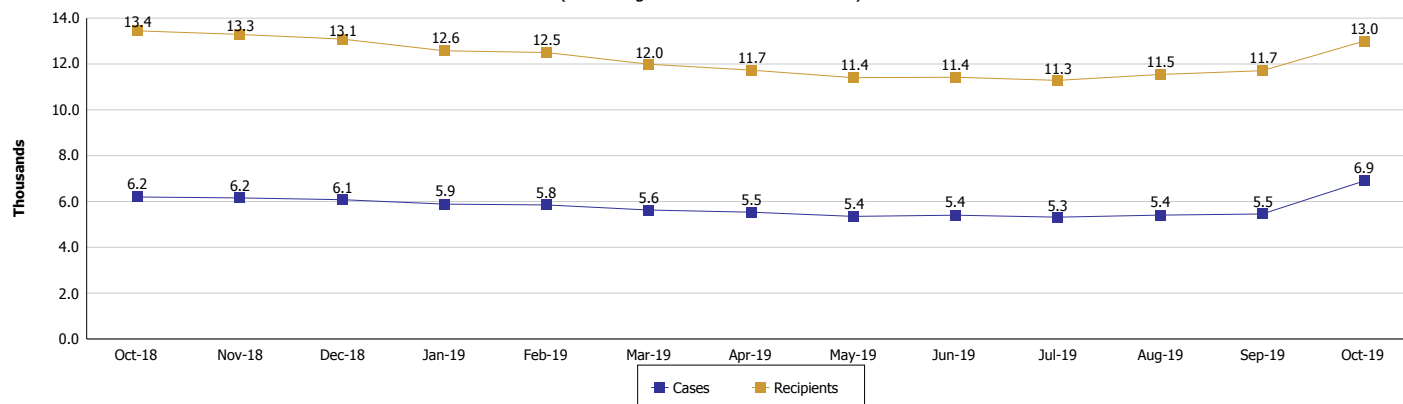
Location: Statewide

#### TEMPORARY ASSISTANCE FOR NEEDY FAMILIES (TANF)

**TANF Cash Assistance**  
(TANF Regular and TANF Two-Parent)



**TANF Cases and Recipients**  
(TANF Regular and TANF Two-Parent)



**Note:**

All data July 2014 and following will be broken out according to the new DFR region structure effective July 1 2014.



## DIVISION OF FAMILY RESOURCES

### Monthly Management Report

Reporting Month: October 2019

Location: Statewide

#### SUPPLEMENTAL NUTRITION ASSISTANCE PROGRAM (SNAP)

	October 2019	September 2019	October 2018	Annual Change
Total issuance	\$74,630,401	\$67,913,086	\$71,548,588	4.31%
Number of households receiving SNAP benefits	282,779	255,861	268,996	5.12%
Number of recipients	620,243	568,977	599,602	3.44%
Average issuance per household	\$263.92	\$265.43	\$265.98	-0.78%
Average issuance per recipient	\$120.32	\$119.36	\$119.33	0.84%

**Note:**

All data July 2014 and following will be broken out according to the new DFR region structure effective July 1 2014.

#### SNAP ERROR RATES

	June 2019	May 2019	April 2019	Cumulative FFY 2018
FFY Cumulative Positive Error Rate	8.41%	9.05%	8.66%	6.10%
Monthly Positive Error Rate	3.70%	11.54%	6.78%	NA
FFY Cumulative Negative Error Rate	40.86%	40.56%	41.29%	39.94%
Monthly Negative Error Rate	43.40%	35.59%	40.00%	NA

**Note:**

All data July 2014 and following will be broken out according to the new DFR region structure effective July 1 2014.

**Notes:**

Reporting periods for SNAP Error Rates reflect the review period and Federal submission deadline. The month reported above is the month in which an action was taken included in the review sample.

Positive actions are those which produced an issuance of benefits to a household. Negative actions are those which closed or denied benefits to a household.

Error Rate data is reported by the state before the federal agency has accepted and finalized the results. This rate is subject to revision based upon: completion and submission of outstanding reviews; final review corrections; and completion of previously dropped reviews. Monthly numbers are taken from end-of-month totals. The error status of cases may be changed by the State or Federal Review process, which would cause a change that might not be reflected in the previous monthly numbers.



# DIVISION OF FAMILY RESOURCES

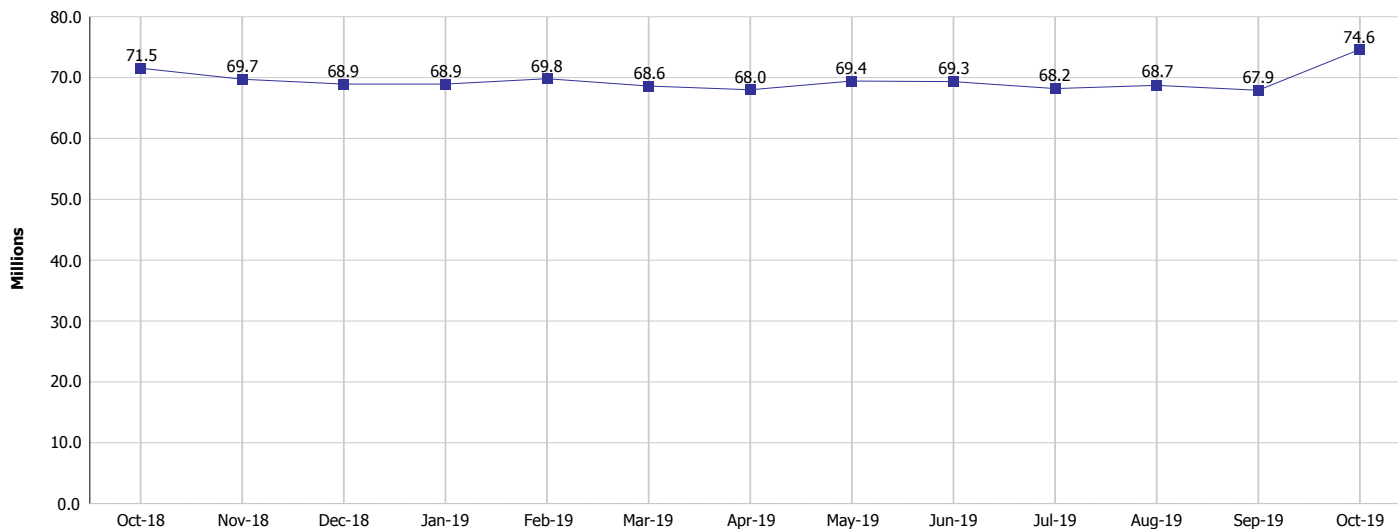
## Monthly Management Report

Reporting Month: October 2019

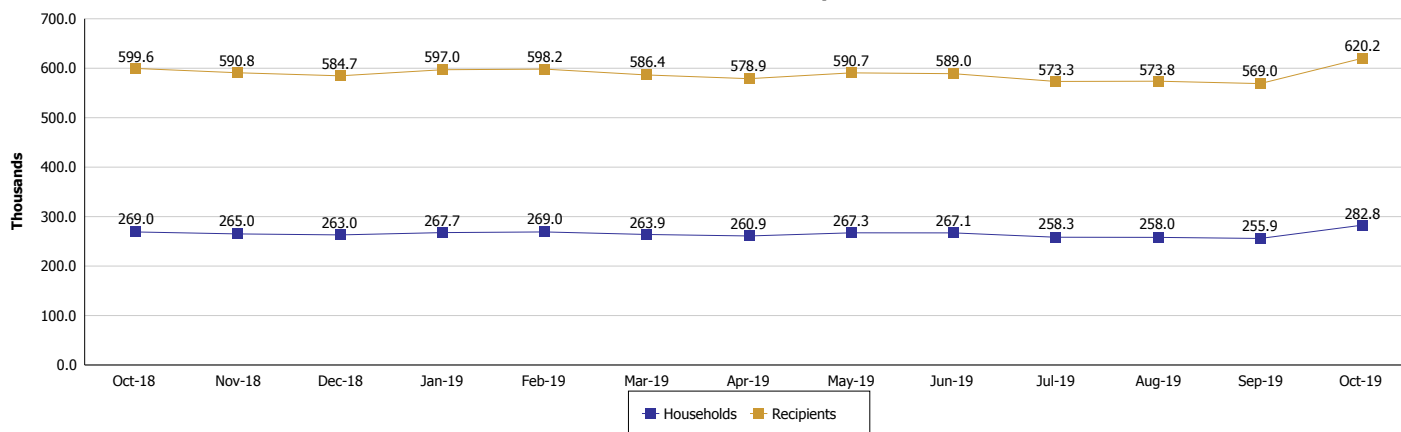
Location: Statewide

### SUPPLEMENTAL NUTRITION ASSISTANCE PROGRAM (SNAP)

#### SNAP Issuance



#### SNAP Households and Recipients



**Note:**

All data July 2014 and following will be broken out according to the new DFR region structure effective July 1 2014.



## DIVISION OF FAMILY RESOURCES

### Monthly Management Report

Reporting Month: October 2019

Location: Statewide

#### HIP 2.0 and SNAP

	October 2019	September 2019	October 2018	Annual Change
Total HIP 2.0 Members	433,099	431,285	425,692	1.74%
HIP Members also SNAP Recipients	141,036	141,009	144,577	-2.45%
Percentage HIP Members SNAP Recipients	32.6%	32.7%	34.0%	0.37%
HIP Members SNAP ABAWDs	3,745	3,936	5,483	-31.70%
Percentage HIP Members SNAP ABAWDs	0.9%	0.9%	1.3%	0.37%

**Note:**

All data July 2014 and following will be broken out according to the new DFR region structure effective July 1 2014.



## DIVISION OF FAMILY RESOURCES

### Monthly Management Report

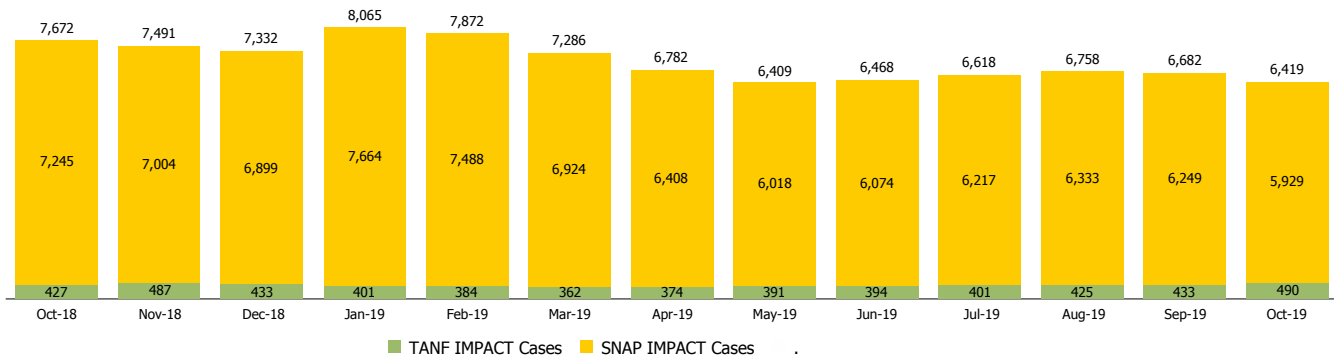
Reporting Month: October 2019

Location: Statewide

#### INDIANA MANPOWER PLACEMENT AND COMPREHENSIVE TRAINING (IMPACT)

	October 2019	September 2019	October 2018	Annual Change
Number of IMPACT cases	6,419	6,682	7,672	-16.33%
Number of TANF IMPACT adults	490	433	427	14.75%
Number of SNAP IMPACT Cases	5,929	6,249	7,245	-18.16%
Total number of adults employed	1,152	935	1,596	-27.82%
Number of TANF IMPACT adults newly employed (within past 30 days)	93	72	127	-26.77%
Number of SNAP IMPACT adults employed	1,059	863	1,469	-27.91%
Total number of adults ineligible due to employment	4,892	4,388	5,719	-14.46%
Number of TANF adults ineligible due to employment	22	16	11	100.00%
Number of SNAP adults ineligible due to employment	4,870	4,372	5,708	-14.68%

**IMPACT Caseloads**  
(SNAP, TANF, Total Caseload)



**Note:**

All data July 2014 and following will be broken out according to the new DFR region structure effective July 1 2014.