



DIVISION OF FAMILY RESOURCES

Monthly Management Report May 2020

State of Indiana

Eric Holcomb
Governor

Family and Social Services Administration

Jennifer Sullivan, M.D.
Secretary

Division of Family Resources

Adrienne Shields
Director

For questions regarding data on this report contact:
office.Communications@fssa.IN.gov



State of Indiana

Published June 2020



DIVISION OF FAMILY RESOURCES

Monthly Management Report

Reporting Month: May 2020

Location: Statewide

TEMPORARY ASSISTANCE FOR NEEDY FAMILIES (TANF)

Child-Only and One-Parent Families	May 31, 2020	April 2020	May 2019	Annual Change
Number of families receiving TANF Grants	7,027	5,965	5,059	38.90%
Total number of grant recipients	15,888	12,932	10,399	52.78%
Number of adult grant recipients	3,276	2,271	1,396	134.67%
Number of child grant recipients	12,612	10,661	9,003	40.09%
Total payments	\$1,476,862	\$1,216,141	\$975,515	51.39%
Average payment per case	\$210.17	\$203.88	\$192.83	8.99%
Average payment per recipient	\$92.95	\$94.04	\$93.81	-0.91%
Number of cases with benefits reduced to zero	90	69	59	52.54%
Number of recipients with benefits reduced to zero	200	144	137	45.99%
Number of adult recipients with benefit reduced to zero	53	36	32	65.62%
Number of child recipients with benefit reduced to zero	147	108	105	40.00%

Two-Parent Families	May 31, 2020	April 2020	May 2019	Annual Change
Number of families receiving TANF Grants	543	344	226	140.27%
Total number of grant recipients	2,094	1,269	838	149.88%
Number of adult grant recipients	827	471	311	165.92%
Number of child grant recipients	1,267	798	527	140.42%
Total payments	\$157,810	\$94,509	\$49,704	217.50%
Average payment per case	\$290.63	\$274.74	\$219.93	32.15%
Average payment per recipient	\$75.36	\$74.48	\$59.31	27.06%
Number of cases with benefits reduced to zero	12	8	6	100.00%
Number of recipients with benefits reduced to zero	49	33	29	68.97%
Number of adult recipients with benefit reduced to zero	20	12	11	81.82%
Number of child recipients with benefit reduced to zero	29	21	18	61.11%

Note:

All data July 2014 and following will be broken out according to the new DFR region structure effective July 1 2014.

Source:



DIVISION OF FAMILY RESOURCES

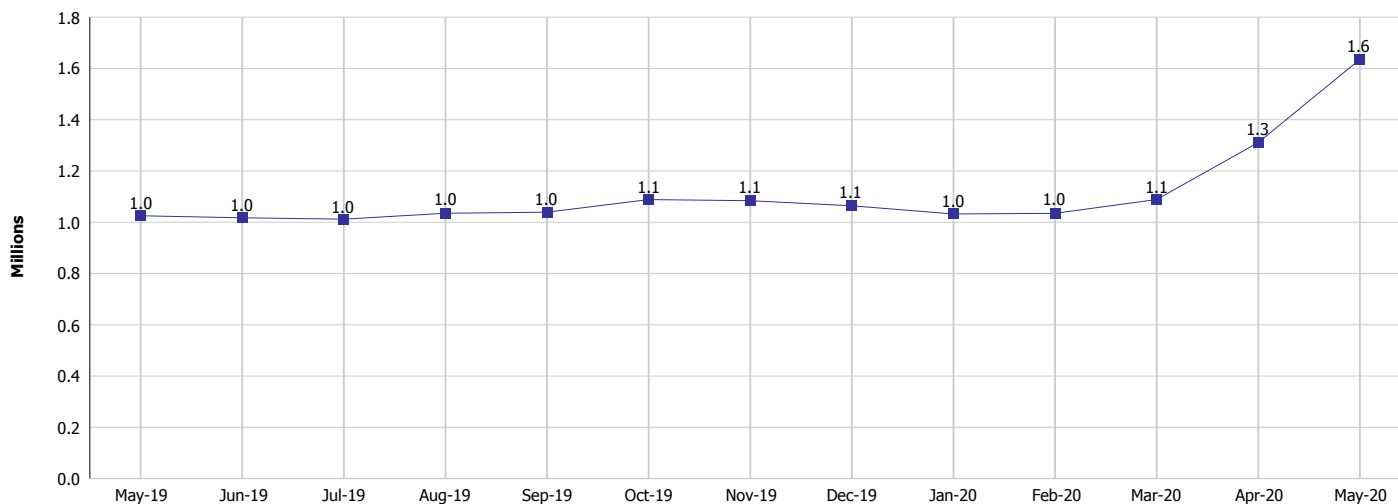
Monthly Management Report

Reporting Month: May 2020

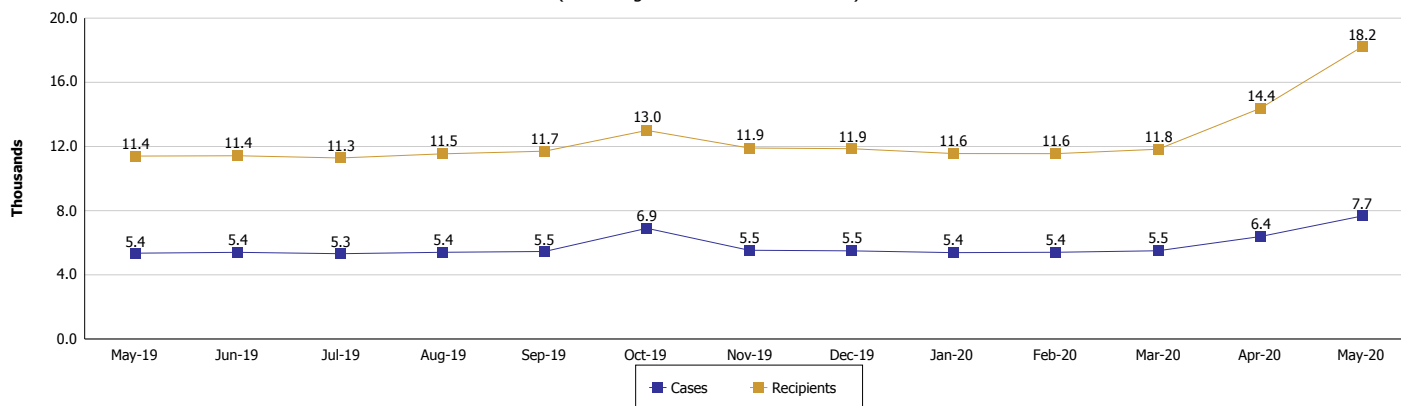
Location: Statewide

TEMPORARY ASSISTANCE FOR NEEDY FAMILIES (TANF)

TANF Cash Assistance
(TANF Regular and TANF Two-Parent)



TANF Cases and Recipients
(TANF Regular and TANF Two-Parent)



Note:

All data July 2014 and following will be broken out according to the new DFR region structure effective July 1 2014.



DIVISION OF FAMILY RESOURCES

Monthly Management Report

Reporting Month: May 2020

Location: Statewide

SUPPLEMENTAL NUTRITION ASSISTANCE PROGRAM (SNAP)

	May 2020	April 2020	May 2019	Annual Change
Total issuance	\$127,588,487	\$119,367,162	\$69,436,986	83.75%
Number of households receiving SNAP benefits	324,735	308,973	267,253	21.51%
Number of recipients	714,884	680,404	590,668	21.03%
Average issuance per household	\$392.90	\$386.34	\$259.82	51.22%
Average issuance per recipient	\$178.47	\$175.44	\$117.56	51.82%

Note:

All data July 2014 and following will be broken out according to the new DFR region structure effective July 1 2014.

SNAP ERROR RATES

	January 2020	December 2019	November 2019	Cumulative FFY 2019
FFY Cumulative Positive Error Rate	6.22%	8.57%	8.19%	8.30%
Monthly Positive Error Rate	1.28%	9.39%	12.80%	NA
FFY Cumulative Negative Error Rate	37.55%	34.74%	40.94%	40.03%
Monthly Negative Error Rate	46.03%	22.22%	48.33%	NA

Note:

All data July 2014 and following will be broken out according to the new DFR region structure effective July 1 2014.

Notes:

Reporting periods for SNAP Error Rates reflect the review period and Federal submission deadline. The month reported above is the month in which an action was taken included in the review sample.

Positive actions are those which produced an issuance of benefits to a household. Negative actions are those which closed or denied benefits to a household.

Error Rate data is reported by the state before the federal agency has accepted and finalized the results. This rate is subject to revision based upon: completion and submission of outstanding reviews; final review corrections; and completion of previously dropped reviews. Monthly numbers are taken from end-of-month totals. The error status of cases may be changed by the State or Federal Review process, which would cause a change that might not be reflected in the previous monthly numbers.



DIVISION OF FAMILY RESOURCES

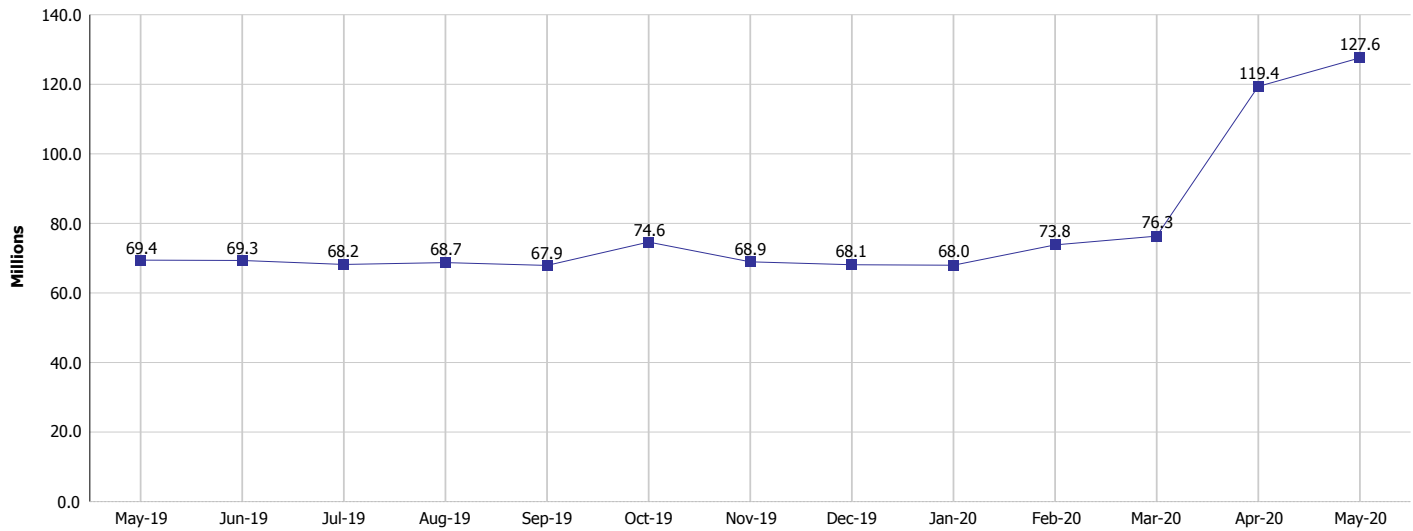
Monthly Management Report

Reporting Month: May 2020

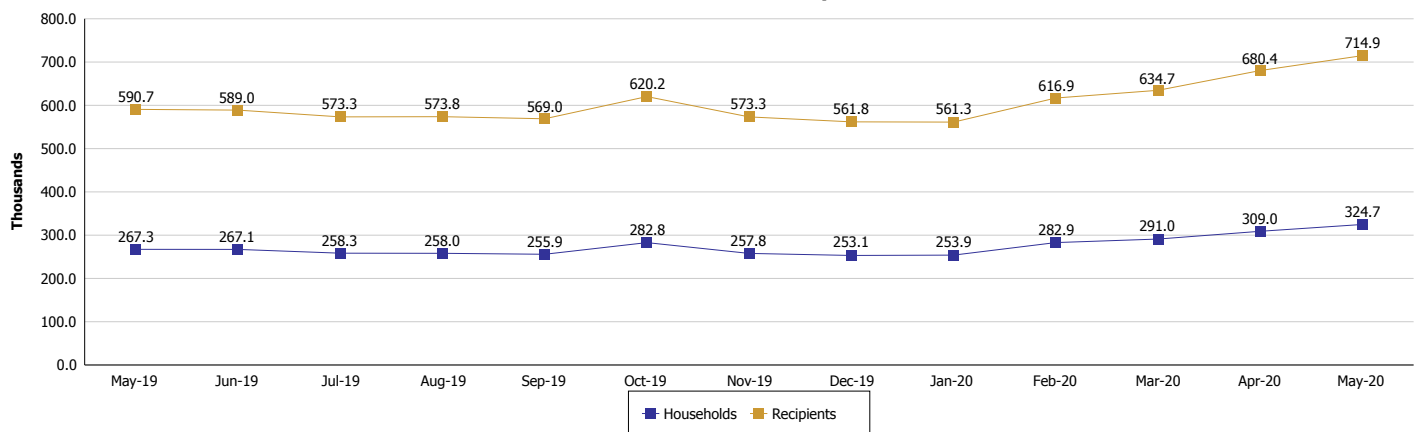
Location: Statewide

SUPPLEMENTAL NUTRITION ASSISTANCE PROGRAM (SNAP)

SNAP Issuance



SNAP Households and Recipients



Note:

All data July 2014 and following will be broken out according to the new DFR region structure effective July 1 2014.



DIVISION OF FAMILY RESOURCES

Monthly Management Report

Reporting Month: May 2020

Location: Statewide

HIP 2.0 and SNAP

	May 2020	April 2020	May 2019	Annual Change
Total HIP 2.0 Members	490,883	467,619	431,625	13.73%
HIP Members also SNAP Recipients	177,839	165,043	141,678	25.52%
Percentage HIP Members SNAP Recipients	36.2%	35.3%	32.8%	17.11%
HIP Members SNAP ABAWDs	7,686	6,357	4,285	79.37%
Percentage HIP Members SNAP ABAWDs	1.6%	1.4%	1.0%	17.11%

Note:

All data July 2014 and following will be broken out according to the new DFR region structure effective July 1 2014.



DIVISION OF FAMILY RESOURCES

Monthly Management Report

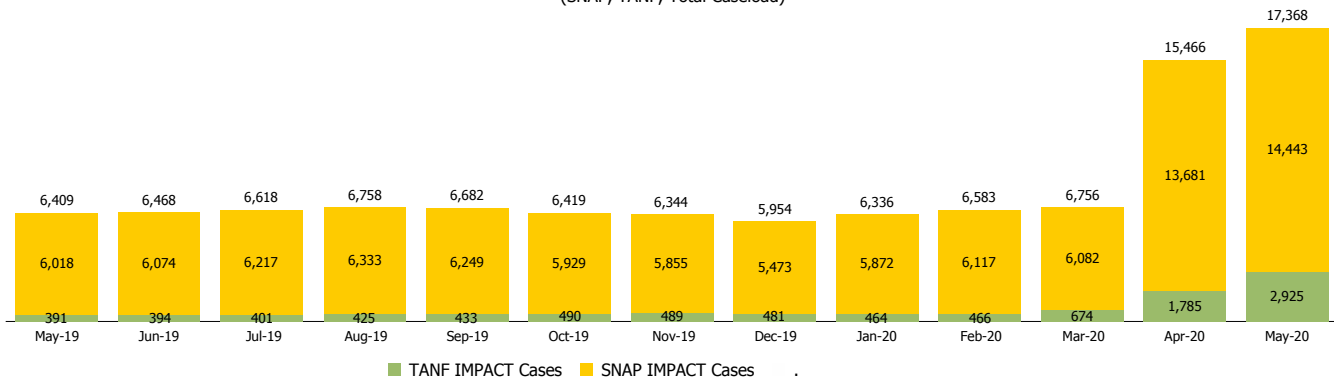
Reporting Month: May 2020

Location: Statewide

INDIANA MANPOWER PLACEMENT AND COMPREHENSIVE TRAINING (IMPACT)

	May 2020	April 2020	May 2019	Annual Change
Number of IMPACT cases	17,368	15,466	6,409	170.99%
Number of TANF IMPACT adults	2,925	1,785	391	648.08%
Number of SNAP IMPACT Cases	14,443	13,681	6,018	140.00%
Total number of adults employed	1,001	1,245	1,149	-12.88%
Number of TANF IMPACT adults newly employed (within past 30 days)	137	98	83	65.06%
Number of SNAP IMPACT adults employed	864	1,147	1,066	-18.95%
Total number of adults ineligible due to employment	1,707	2,831	5,218	-67.29%
Number of TANF adults ineligible due to employment	5	9	18	-72.22%
Number of SNAP adults ineligible due to employment	1,702	2,822	5,200	-67.27%

IMPACT Caseloads
(SNAP, TANF, Total Caseload)



Note:

All data July 2014 and following will be broken out according to the new DFR region structure effective July 1 2014.