



DIVISION OF FAMILY RESOURCES

Monthly Management Report May 2019

State of Indiana

Eric Holcomb
Governor

Family and Social Services Administration

Jennifer Walthall, M.D.
Secretary

Division of Family Resources

Adrienne Shields
Director

For questions regarding data on this report contact:
office.Communications@fssa.IN.gov



State of Indiana

Published June 2019



DIVISION OF FAMILY RESOURCES

Monthly Management Report

Reporting Month: May 2019

Location: Statewide

TEMPORARY ASSISTANCE FOR NEEDY FAMILIES (TANF)

Child-Only and One-Parent Families	May 31, 2019	April 2019	May 2018	Annual Change
Number of families receiving TANF Grants	5,059	5,232	5,938	-14.80%
Total number of grant recipients	10,399	10,714	12,212	-14.85%
Number of adult grant recipients	1,396	1,411	1,629	-14.30%
Number of child grant recipients	9,003	9,303	10,583	-14.93%
Total payments	\$975,515	\$1,009,772	\$1,132,483	-13.86%
Average payment per case	\$192.83	\$193.00	\$190.72	1.11%
Average payment per recipient	\$93.81	\$94.25	\$92.74	1.16%
Number of cases with benefits reduced to zero	59	76	93	-36.56%
Number of recipients with benefits reduced to zero	137	172	218	-37.16%
Number of adult recipients with benefit reduced to zero	32	39	49	-34.69%
Number of child recipients with benefit reduced to zero	105	133	169	-37.87%

Two-Parent Families	May 31, 2019	April 2019	May 2018	Annual Change
Number of families receiving TANF Grants	226	220	241	-6.22%
Total number of grant recipients	838	824	947	-11.51%
Number of adult grant recipients	311	294	328	-5.18%
Number of child grant recipients	527	530	619	-14.86%
Total payments	\$49,704	\$48,482	\$49,398	0.62%
Average payment per case	\$219.93	\$220.37	\$204.97	7.30%
Average payment per recipient	\$59.31	\$58.84	\$52.16	13.71%
Number of cases with benefits reduced to zero	6	5	4	50.00%
Number of recipients with benefits reduced to zero	29	22	13	123.08%
Number of adult recipients with benefit reduced to zero	11	9	7	57.14%
Number of child recipients with benefit reduced to zero	18	13	6	200.00%

Note:

All data July 2014 and following will be broken out according to the new DFR region structure effective July 1 2014.

Source:



DIVISION OF FAMILY RESOURCES

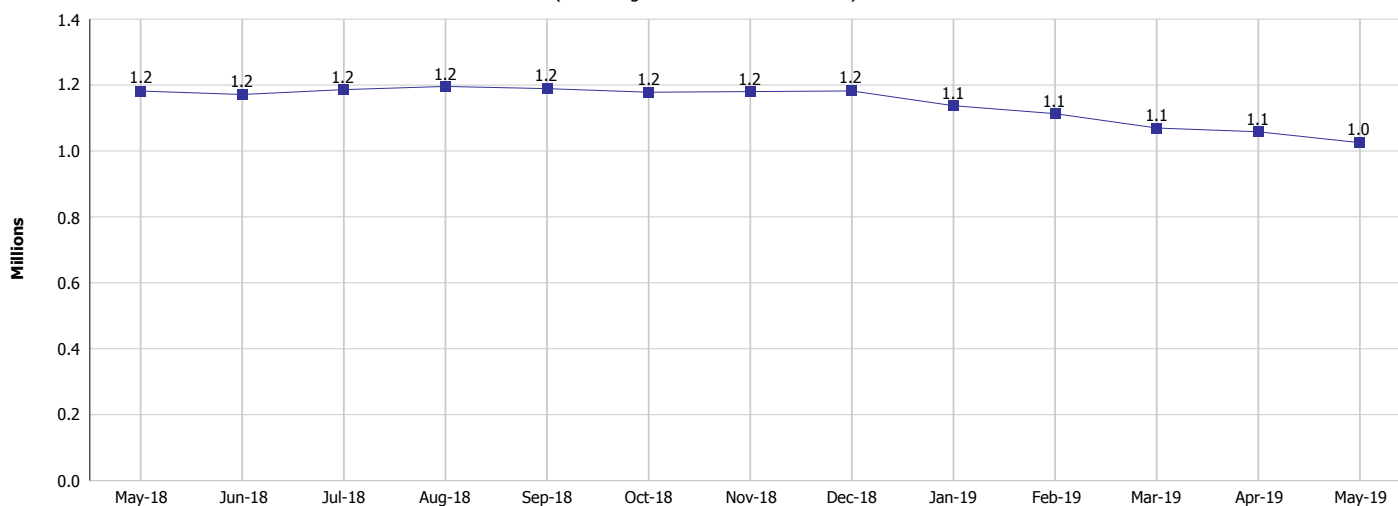
Monthly Management Report

Reporting Month: May 2019

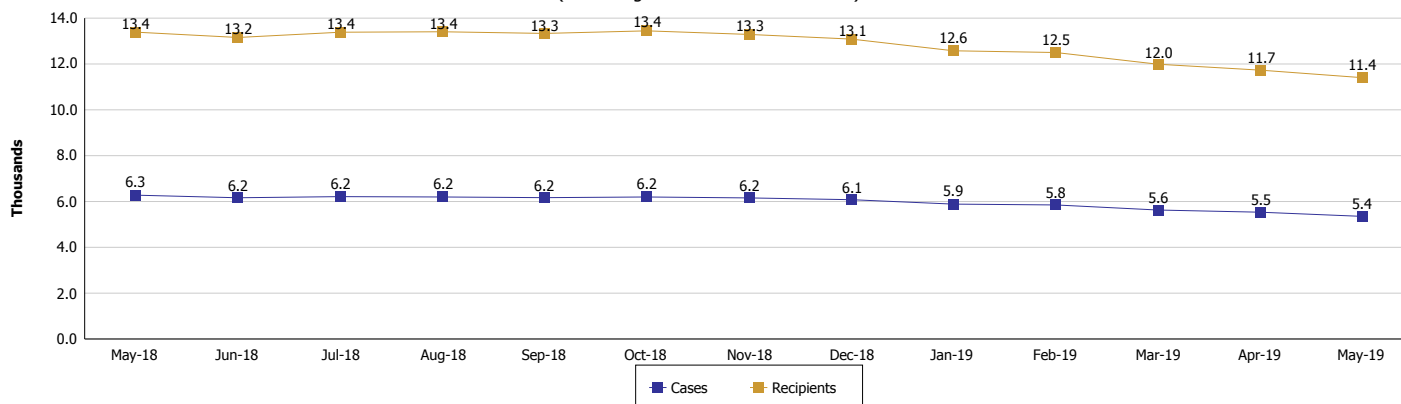
Location: Statewide

TEMPORARY ASSISTANCE FOR NEEDY FAMILIES (TANF)

TANF Cash Assistance
(TANF Regular and TANF Two-Parent)



TANF Cases and Recipients
(TANF Regular and TANF Two-Parent)



Note:

All data July 2014 and following will be broken out according to the new DFR region structure effective July 1 2014.



DIVISION OF FAMILY RESOURCES

Monthly Management Report

Reporting Month: May 2019

Location: Statewide

SUPPLEMENTAL NUTRITION ASSISTANCE PROGRAM (SNAP)

	May 2019	April 2019	May 2018	Annual Change
Total issuance	\$69,436,986	\$67,996,521	\$71,654,651	-3.09%
Number of households receiving SNAP benefits	267,253	260,883	270,609	-1.24%
Number of recipients	590,668	578,914	606,277	-2.57%
Average issuance per household	\$259.82	\$260.64	\$264.79	-1.88%
Average issuance per recipient	\$117.56	\$117.46	\$118.19	-0.53%

Note:

All data July 2014 and following will be broken out according to the new DFR region structure effective July 1 2014.

SNAP ERROR RATES

	January 2019	December 2018	November 2018	Cumulative FFY 2018
FFY Cumulative Positive Error Rate	8.63%	9.95%	11.20%	6.10%
Monthly Positive Error Rate	5.09%	7.11%	15.06%	NA
FFY Cumulative Negative Error Rate	37.96%	34.74%	36.36%	39.94%
Monthly Negative Error Rate	49.09%	31.03%	35.48%	NA

Note:

All data July 2014 and following will be broken out according to the new DFR region structure effective July 1 2014.

Notes:

Reporting periods for SNAP Error Rates reflect the review period and Federal submission deadline. The month reported above is the month in which an action was taken included in the review sample.

Positive actions are those which produced an issuance of benefits to a household. Negative actions are those which closed or denied benefits to a household.

Error Rate data is reported by the state before the federal agency has accepted and finalized the results. This rate is subject to revision based upon: completion and submission of outstanding reviews; final review corrections; and completion of previously dropped reviews. Monthly numbers are taken from end-of-month totals. The error status of cases may be changed by the State or Federal Review process, which would cause a change that might not be reflected in the previous monthly numbers.



DIVISION OF FAMILY RESOURCES

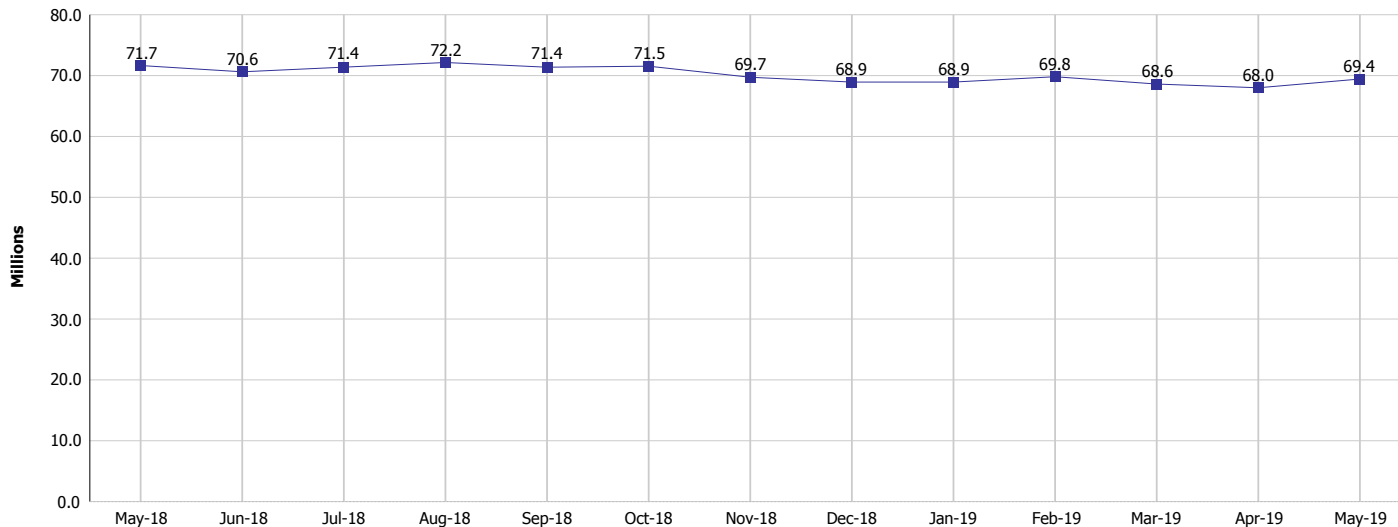
Monthly Management Report

Reporting Month: May 2019

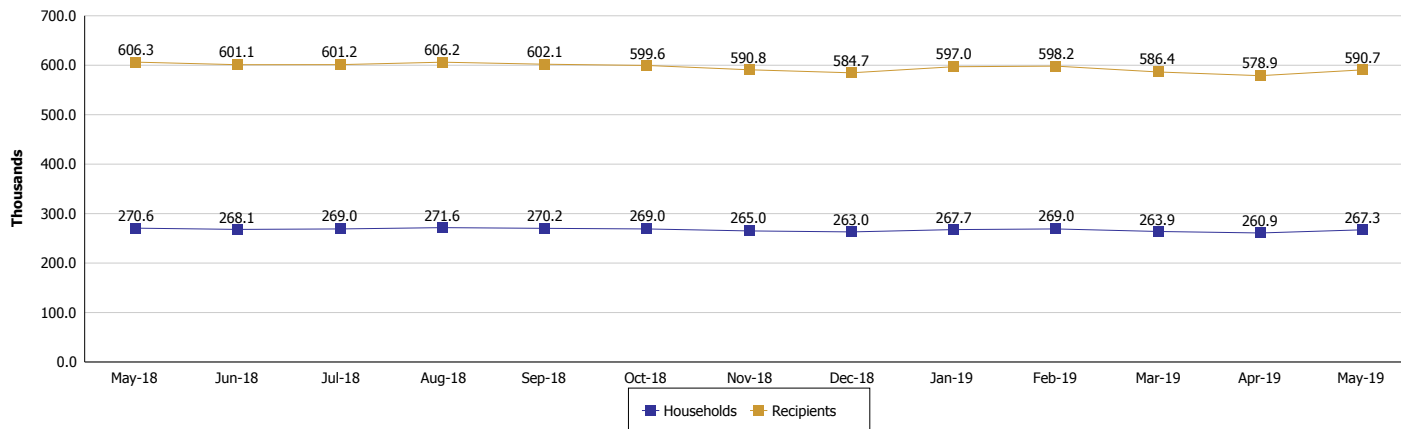
Location: Statewide

SUPPLEMENTAL NUTRITION ASSISTANCE PROGRAM (SNAP)

SNAP Issuance



SNAP Households and Recipients



Note:

All data July 2014 and following will be broken out according to the new DFR region structure effective July 1 2014.



DIVISION OF FAMILY RESOURCES

Monthly Management Report

Reporting Month: May 2019

Location: Statewide

HIP 2.0 and SNAP

	May 2019	April 2019	May 2018	Annual Change
Total HIP 2.0 Members	431,625	432,682	436,004	-1.00%
HIP Members also SNAP Recipients	141,678	142,807	144,533	-1.98%
Percentage HIP Members SNAP Recipients	32.8%	33.0%	33.1%	-1.09%
HIP Members SNAP ABAWDs	4,285	4,889	3,402	25.96%
Percentage HIP Members SNAP ABAWDs	1.0%	1.1%	0.8%	-1.09%

Note:

All data July 2014 and following will be broken out according to the new DFR region structure effective July 1 2014.



DIVISION OF FAMILY RESOURCES

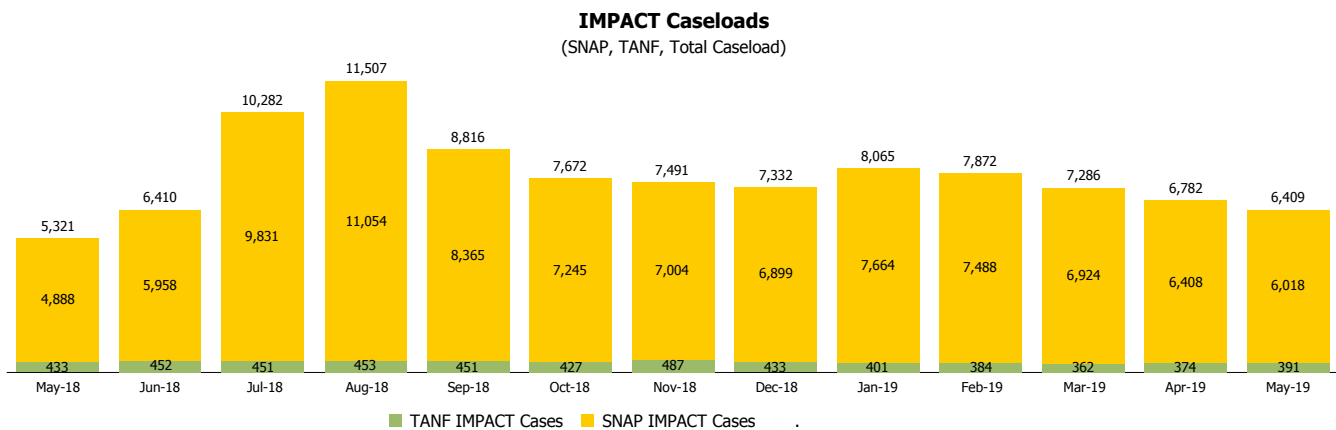
Monthly Management Report

Reporting Month: May 2019

Location: Statewide

INDIANA MANPOWER PLACEMENT AND COMPREHENSIVE TRAINING (IMPACT)

	May 2019	April 2019	May 2018	Annual Change
Number of IMPACT cases	6,409	6,782	5,321	20.45%
Number of TANF IMPACT adults	391	374	433	-9.70%
Number of SNAP IMPACT Cases	6,018	6,408	4,888	23.12%
Total number of adults employed	1,149	1,241	1,196	-3.93%
Number of TANF IMPACT adults newly employed (within past 30 days)	83	89	106	-21.70%
Number of SNAP IMPACT adults employed	1,066	1,152	1,090	-2.20%
Total number of adults ineligible due to employment	5,218	4,461	5,499	-5.11%
Number of TANF adults ineligible due to employment	18	13	15	20.00%
Number of SNAP adults ineligible due to employment	5,200	4,448	5,484	-5.18%



Note:

All data July 2014 and following will be broken out according to the new DFR region structure effective July 1 2014.