



HIV/AIDS Epidemiologic Profile Indiana 2017

Indiana State Department of Health

Daniel Hillman, Epidemiologist

February 2018



Definitions

- **Prevalence**-The total number of cases of a disease in persons not known to have died in a given population at a particular time. **Includes persons that have moved to Indiana from another State.**
- **Diagnosed**-The number of new cases in a population within a given time period. **Reporting delays can affect this report.**
- **Rate**-Number of actual cases divided by the number at risk.
- **HIV**-Human Immunodeficiency Virus
- **AIDS**-Acquired Immunodeficiency Syndrome
- **HIV/AIDS**-Having either HIV or AIDS
- **Mortality**-The total number of deaths in a given population at a given time
- **Other**- Includes categories not represented – Only percentages greater than or equal to 5% will be further broken down for analysis



Definitions

- **MSM**-Men having Sex with Men
- **PWID**-Persons Who Inject Drugs
- **MSM/PWID**-Men having Sex with Men and Persons Who Inject Drugs
- **Heterosexual or Hetero**-persons who report specific heterosexual contact with a person with, or at increased risk for, HIV infection
- **MSM/Heterosexual**-men who report sexual contact with both men and women
- **PWID/Heterosexual**-Heterosexual contact with an intravenous drug user
- **Other**-Populations too small to report separately therefore combined into one group.
- **NIR**-No Identified Risk



HIV/AIDS Prevalence 2017



Prevalence Numbers (Rates) for HIV and AIDS, 2015-2017

Disease	2017 Number(Rate)	2016 Number(Rate)	2015 Number(Rate)
HIV	6,257 (94.5)	5,981 (90.4)	5,705 (86.2)
AIDS	6,378 (96.3)	6,194 (93.6)	5,999 (90.6)
HIV/AIDS	12,635 (190.9)	12,175 (183.9)	11,704 (176.8)



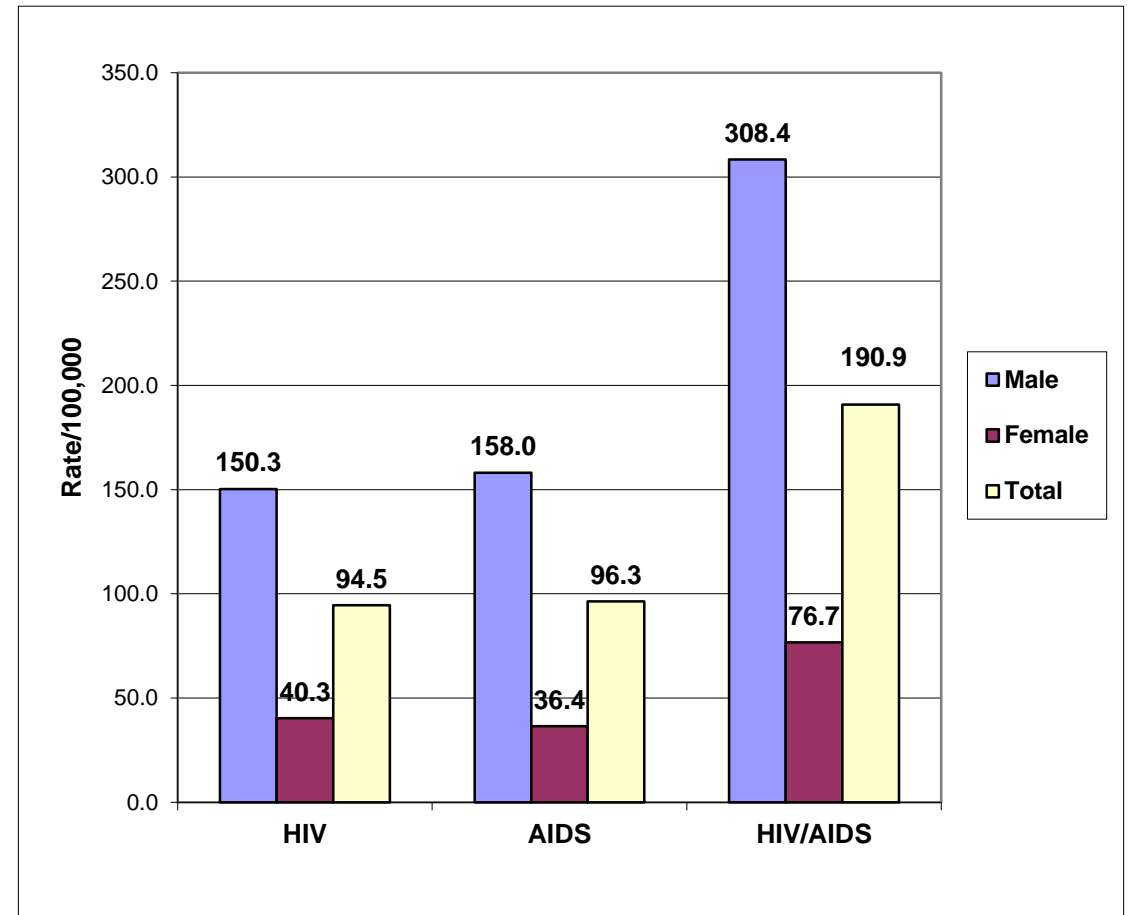
Prevalence Rates of Persons Living with HIV/AIDS by Sex, 2015-2017

Sex	2017 Rate	2016 Rate	2015 Rate
Male	308.4	297.8	286.0
Female	76.7	73.3	70.8
Total	190.9	183.9	176.8

Source: Indiana HIV/AIDS Surveillance Database
Rates based on U.S. Census, 2015

Prevalence Rates of Persons Living with HIV/AIDS by Sex, 2017

Sex	Number	Percent	Rate
Male	10,058	80.0	308.4
Female	2,577	20.0	76.7
Total	12,635	100.0	190.9



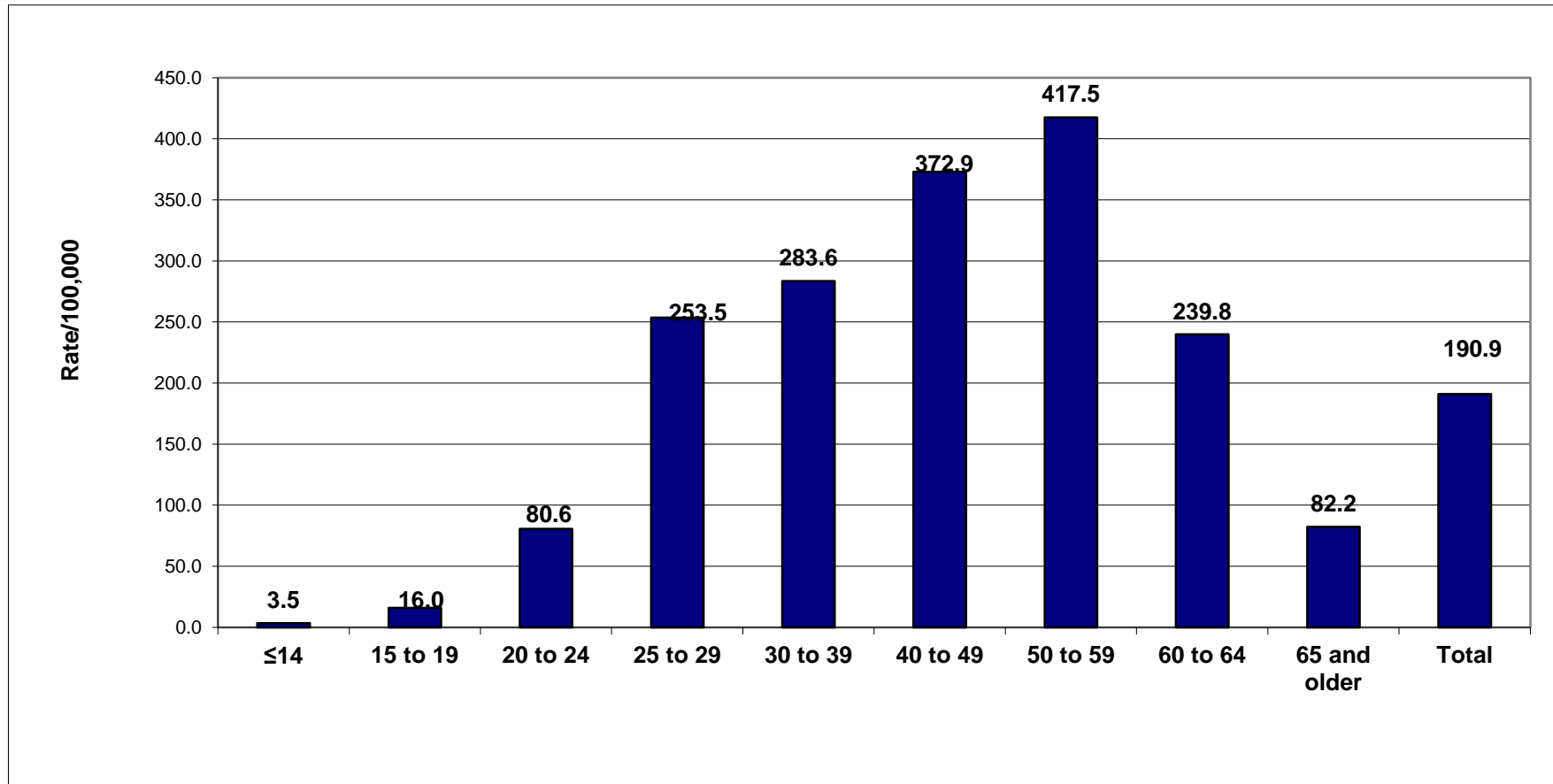
Source: Indiana HIV/AIDS Surveillance Database
Rates based on U.S. Census, 2015

Prevalence Rates of Persons Living with HIV/AIDS by Age, 2015-2017

Age Group	2017 Rate	2016 Rate	2015 Rate
≤14	3.5	4.2	4.3
15-19	16.0	12.7	12.3
20-24	80.6	89.5	93.4
25-29	253.5	235.5	215.9
30-39	283.6	271.6	260.6
40-49	372.9	385.7	393.8
50-59	417.5	395.5	372.7
60-64	239.8	214.2	187.2
65+	82.2	69.6	62.8
Total	190.9	183.9	176.8

Source: Indiana HIV/AIDS Surveillance Database
Rates based on U.S. Census, 2015

Prevalence Rates of Persons Living with HIV/AIDS by Age, 2017



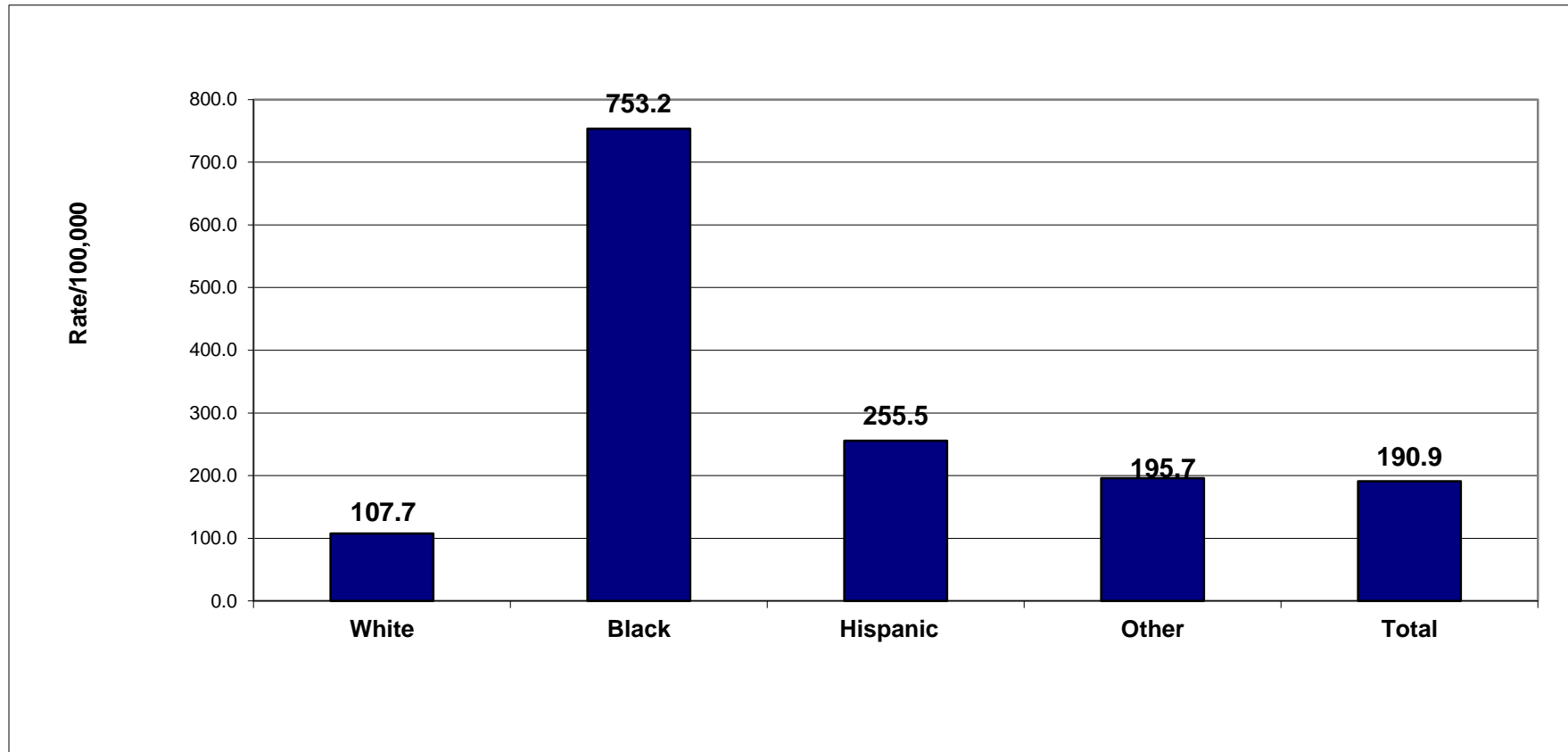
Source: Indiana HIV/AIDS Surveillance Database
Rates based on U.S. Census, 2015



Prevalence of Persons Living with HIV/AIDS by Race/Ethnicity, 2017

Race/Ethnicity	Number	Percent	Rate
White	6,121	48.4	107.7
Black	4,795	38.0	753.2
Hispanic	1,129	8.9	255.5
Other	590	4.7	195.7
Total	12,635	100.0	190.9

Prevalence Rates of Persons Living with HIV/AIDS by Race/Ethnicity, 2017



Source: Indiana HIV/AIDS Surveillance Database
Rates based on U.S. Census, 2015

Prevalence Rates (Percents) of Persons Living with HIV/AIDS by Race/Ethnicity, 2015-2017

Race/Ethnicity	2017 Rate(%)	2016 Rate(%)	2015 Rate(%)
White	107.7 (48.4%)	106.1 (49.5%)	104.0 (50.5%)
Black	753.2 (38.0%)	713.6 (37.3%)	676.4 (36.8%)
Hispanic	255.5 (8.9%)	239.6 (8.7%)	221.3 (8.4%)
Other	195.7 (4.7%)	181.1 (4.5%)	170.2 (4.4%)
Total	190.9 (100.0%)	183.9 (100.0%)	176.8 (100.0%)

Source: Indiana HIV/AIDS Surveillance Database
Rates based on U.S. Census, 2015



*Prevalence Rates (Percents) of Males Living with HIV/AIDS by Mode of Transmission, 2015-2017**

Mode	2017 Rate(%)	2016 Rate(%)	2015 Rate(%)
MSM	180.2 (46.5%)	175 (46.9%)	170.1 (47.4%)
MSM/PWID	14.9 (3.8%)	14.4 (3.9%)	13.9 (3.9%)
MSM/ Hetero	24.2 (6.3%)	22.7 (6.1%)	20.3 (5.7%)

*MSM, MSM/PWID, MSM/Hetero rates are based on Indiana male population (per 100,000).

*Prevalence Rates (Percents) of HIV/AIDS by Mode of Transmission, 2015-2017**

Mode	2017 Rate(%)	2016 Rate(%)	2015 Rate(%)
PWID	6.9 (3.6%)	6.8 (3.7%)	6.5 (3.7%)
Heterosexual	37.8 (19.8%)	35.9 (19.5%)	34.2 (19.4%)
PWID/ Heterosexual	7.4 (3.9%)	7.2 (3.9%)	6.7 (3.8%)
Other	30.7 (16.1%)	29.6 (16.1%)	28.7 (16.2%)
Total Population**	190.9 (100.0%)	183.9 (100.0%)	176.8 (100.0%)

* Rates are based on Indiana total population (per 100,000).

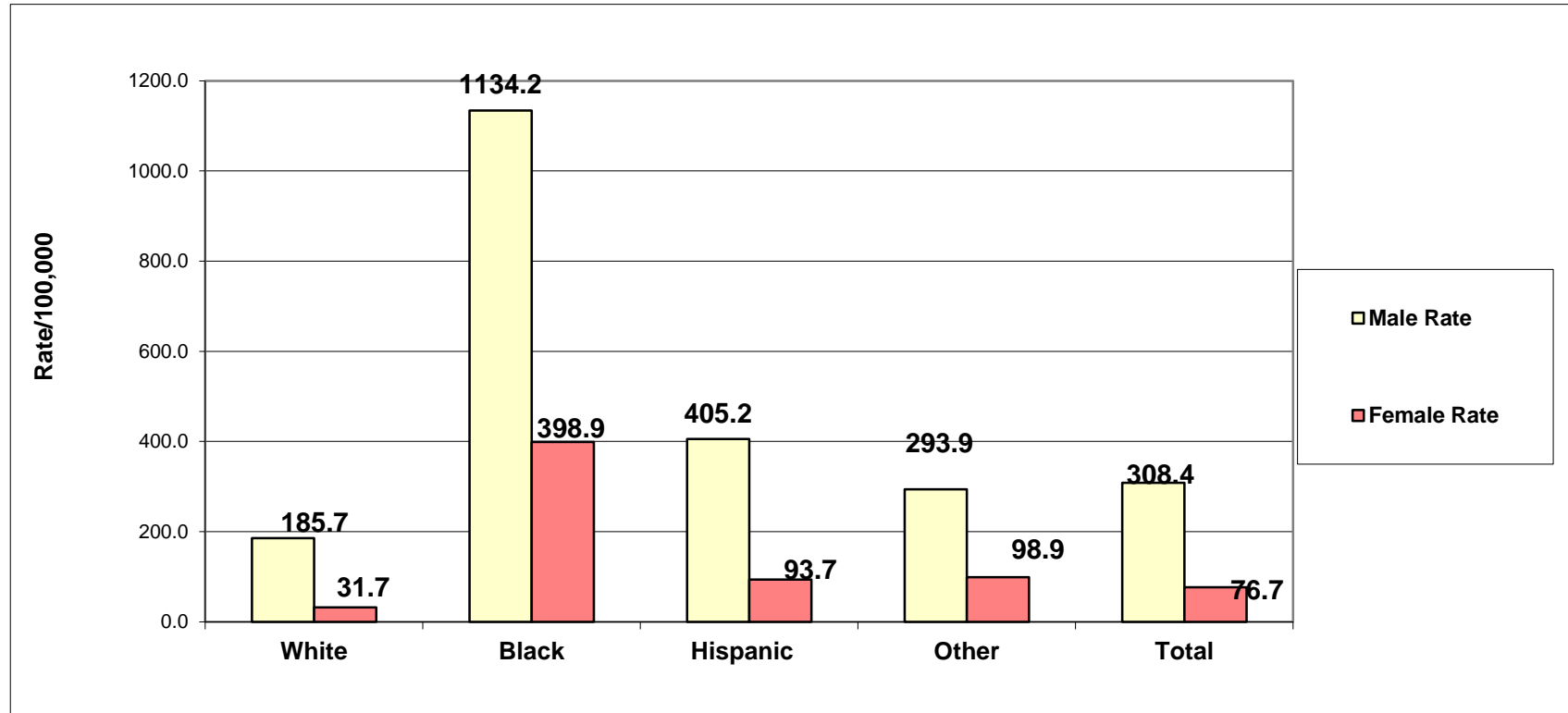
**Total Population = Indiana HIV/AIDS population

Prevalence Rates of Persons Living with HIV/AIDS by Race/Ethnicity and Sex, 2015-2017

Race/ Ethnicity	Male Rate/Year			Female Rate/Year		
	2017	2016	2015	2017	2016	2015
White	185.7	182.9	179.2	31.7	31.1	30.6
Black	1,134.2	1,073.9	1,013.2	398.9	378.6	363.1
Hispanic	405.2	380.8	352.5	93.7	87.1	79.6
Other	293.9	277.2	255.8	98.9	86.4	85.7
Total	308.4	297.8	286.0	76.7	73.3	70.8

Source: Indiana HIV/AIDS Surveillance Database
Rates based on U.S. Census, 2015

HIV/AIDS Prevalence Rates by Race/Ethnicity and Sex, 2017



Source: Indiana HIV/AIDS Surveillance Database
Rates based on U.S. Census, 2015

*Prevalence Numbers and Rates Among Males Living with HIV/AIDS by Mode of Transmission and Race/Ethnicity, 2017**

Mode	Black		Hispanic		White		Other	
	Number	Rate	Number	Rate	Number	Rate	Number	Rate
MSM	1,754	(571.08)	473	(206.1)	3,468	(123.6)	184	(122.9)
MSM/PWID	124	(40.4)	32	(13.9)	309	(11.0)	20	(13.4)
MSM/Hetero	350	(114.1)	78	(34.0)	329	(11.7)	33	(22.0)

*MSM, MSM/PWID, MSM/Hetero rates are based on Indiana male population (per 100,000).

*Prevalence Numbers and Rates of HIV/AIDS by Mode of Transmission and Race/Ethnicity, 2017 Cont..**

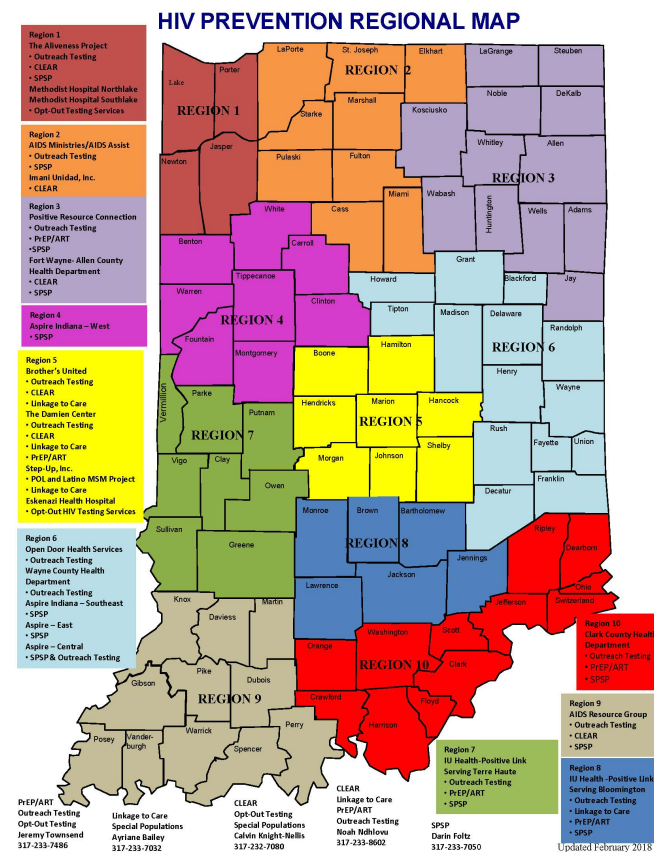
Mode	Black		Hispanic		White		Other	
	Number	Rate	Number	Rate	Number	Rate	Number	Rate
PWID	141	(22.1)	46	(10.4)	250	(4.4)	19	(6.3)
Hetero	1,300	(204.2)	272	(61.6)	747	(13.1)	183	(60.7)
PWID/ Hetero	171	(26.9)	37	(8.4)	256	(4.5)	25	(8.3)
Other	955	(150.0)	191	(43.2)	762	(13.4)	126	(41.8)
Total Population **	4,795	(753.2)	1,129	(255.5)	6,121	(107.7)	590	(195.7)

* Rates are based on Indiana total population (per 100,000).

**Total Population = Indiana HIV/AIDS population

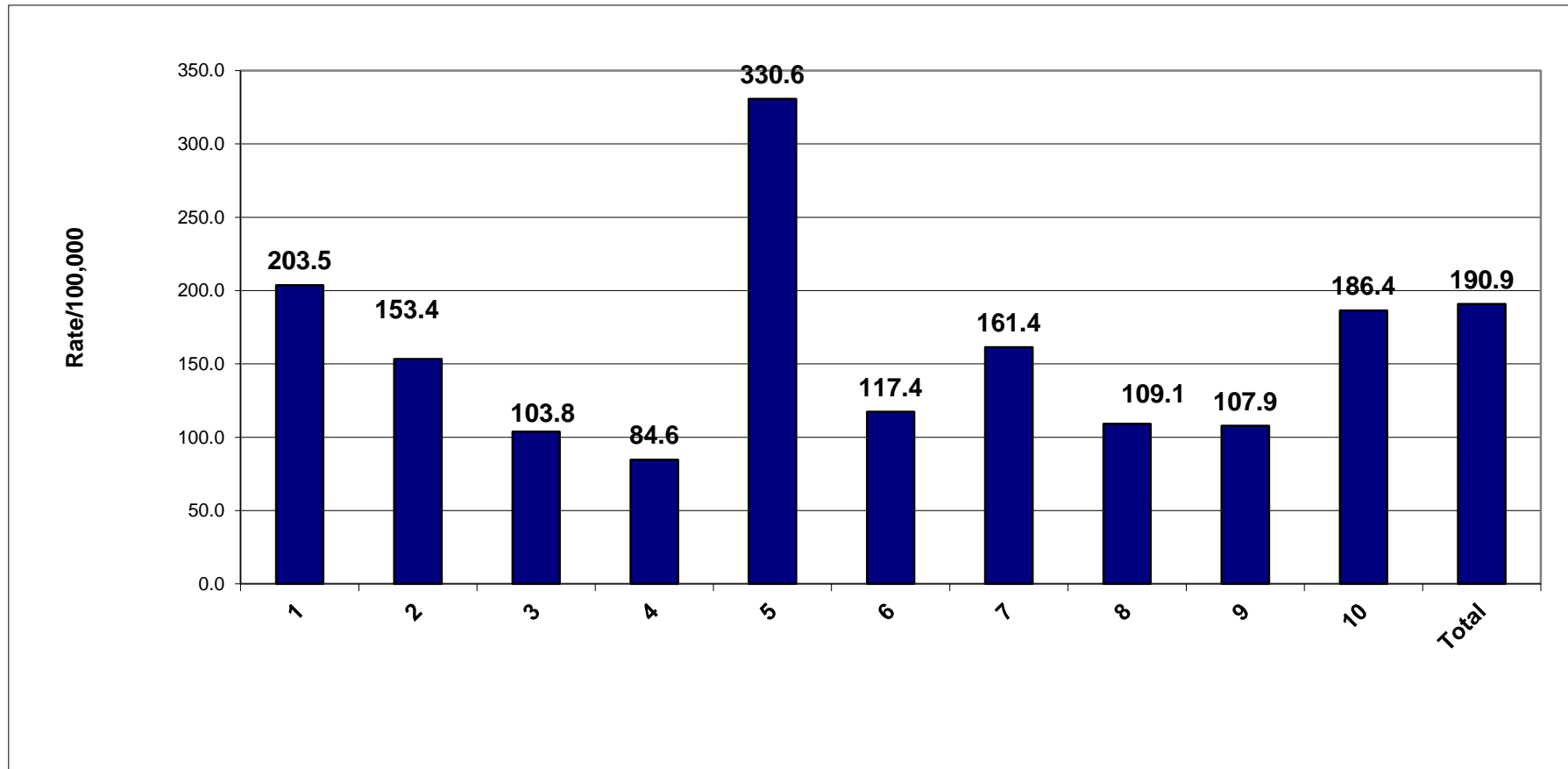
Prevalence of Persons Living with HIV/AIDS by Health Region, 2017

Health Region	Number	Percent	Rate
1	1,431	11.3	203.5
2	1,165	9.2	153.4
3	827	6.5	103.8
4	283	2.2	84.6
5	5,972	47.3	330.6
6	778	6.2	117.4
7	450	3.6	161.4
8	391	3.1	109.1
9	517	4.1	107.9
10	821	6.5	186.4
Total	12,635	100.0	190.9



Source: Indiana HIV/AIDS Surveillance Database
Rates based on U.S. Census, 2015

Prevalence Rates of Persons Living with HIV/AIDS by Health Region, 2017



Source: Indiana HIV/AIDS Surveillance Database
Rates based on U.S. Census, 2015



New HIV/AIDS Diagnosis 2017



Indiana New Diagnosis Numbers (Rates) for HIV and AIDS, 2015-2017

Disease	2017 Number(Rate)	2016 Number(Rate)	2015 Number(Rate)
HIV	444 (6.7)	413 (6.2)	543 (8.2)
AIDS	103 (1.6)	94 (1.4)	78 (1.2)
HIV/AIDS	547 (8.3)	507 (7.7)	621 (9.4)

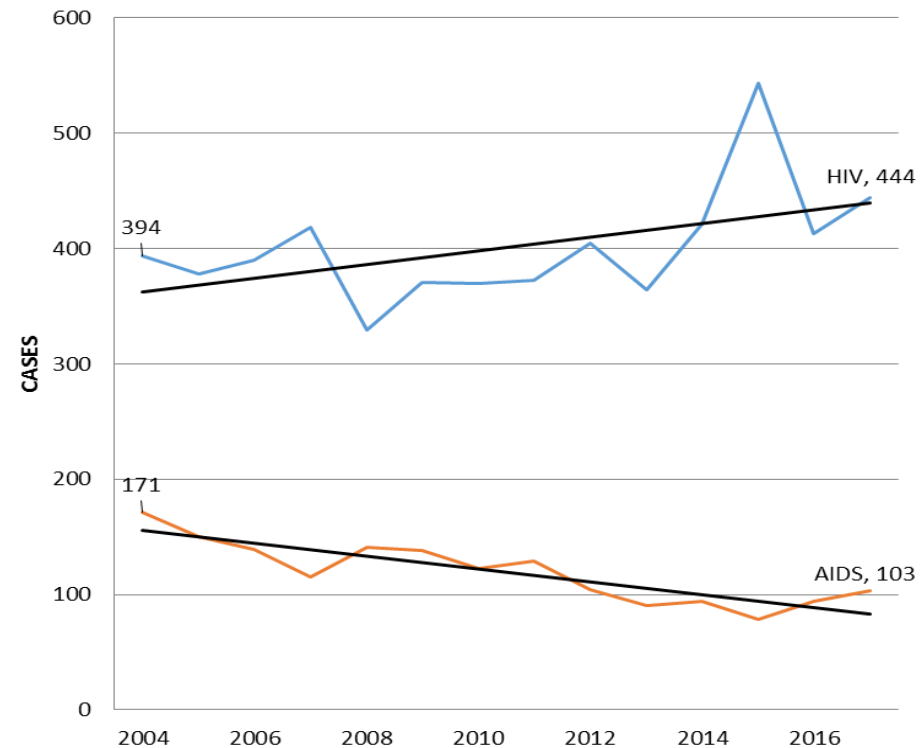
New Diagnosis Absolute Numbers for Indiana HIV/AIDS and AIDS, 2004–2017

Table1. Newly Reported Indiana HIV and AIDS Cases, Reported 2004-2017

Year	HIV		AIDS		HIV/AIDS	Total
	Count	%	Count	%		
2004	394	70%	171	30%		565
2005	378	72%	150	28%		528
2006	390	74%	139	26%		529
2007	418	78%	115	22%		533
2008	329	70%	141	30%		470
2009	371	73%	138	27%		509
2010	370	75%	123	25%		493
2011	372	74%	129	26%		501
2012	405	80%	104	20%		509
2013	364	80%	90	20%		454
2014	421	82%	94	18%		515
2015*	543	87%	78	13%		621
2016	413	78%	94	22%		507
2017	444	81%	103	19%		547
Avg.	401		119		520	
Std. Dev.	50		27		41	
Range	(351-451)		(92-146)		(479-561)	

*Significant Differences

Figure1. Newly Reported Indiana HIV and AIDS Cases, Reported 2004-2017

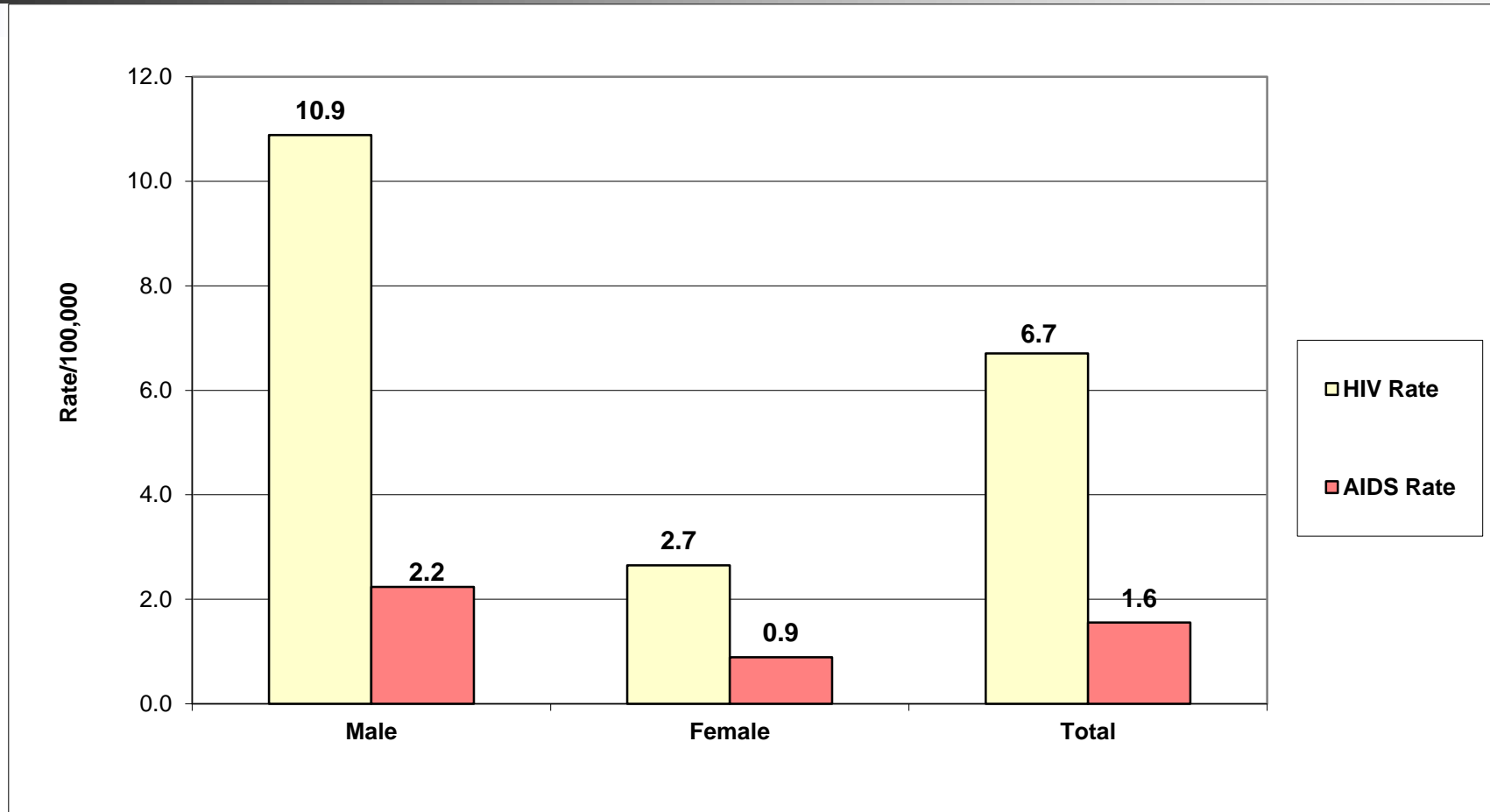


Source: Indiana HIV/AIDS Surveillance Database
Rates based on U.S. Census, 2015

New Diagnosis Numbers (Rates) of HIV, AIDS, and HIV/AIDS by Sex, 2017

SEX	HIV Number(Rate)	AIDS Number(Rate)	HIV/AIDS Number(Rate)
Male	355 (10.9)	73 (2.2)	428 (13.1)
Female	89 (2.7)	30 (0.9)	119 (3.5)
Total	444 (6.7)	103 (1.6)	547 (8.3)

New Diagnosis Rates of HIV and AIDS by Sex, 2017



Source: Indiana HIV/AIDS Surveillance Database
Rates based on U.S. Census, 2015

New Diagnosis Numbers (percentage) of HIV/AIDS by Sex, 2015-2017

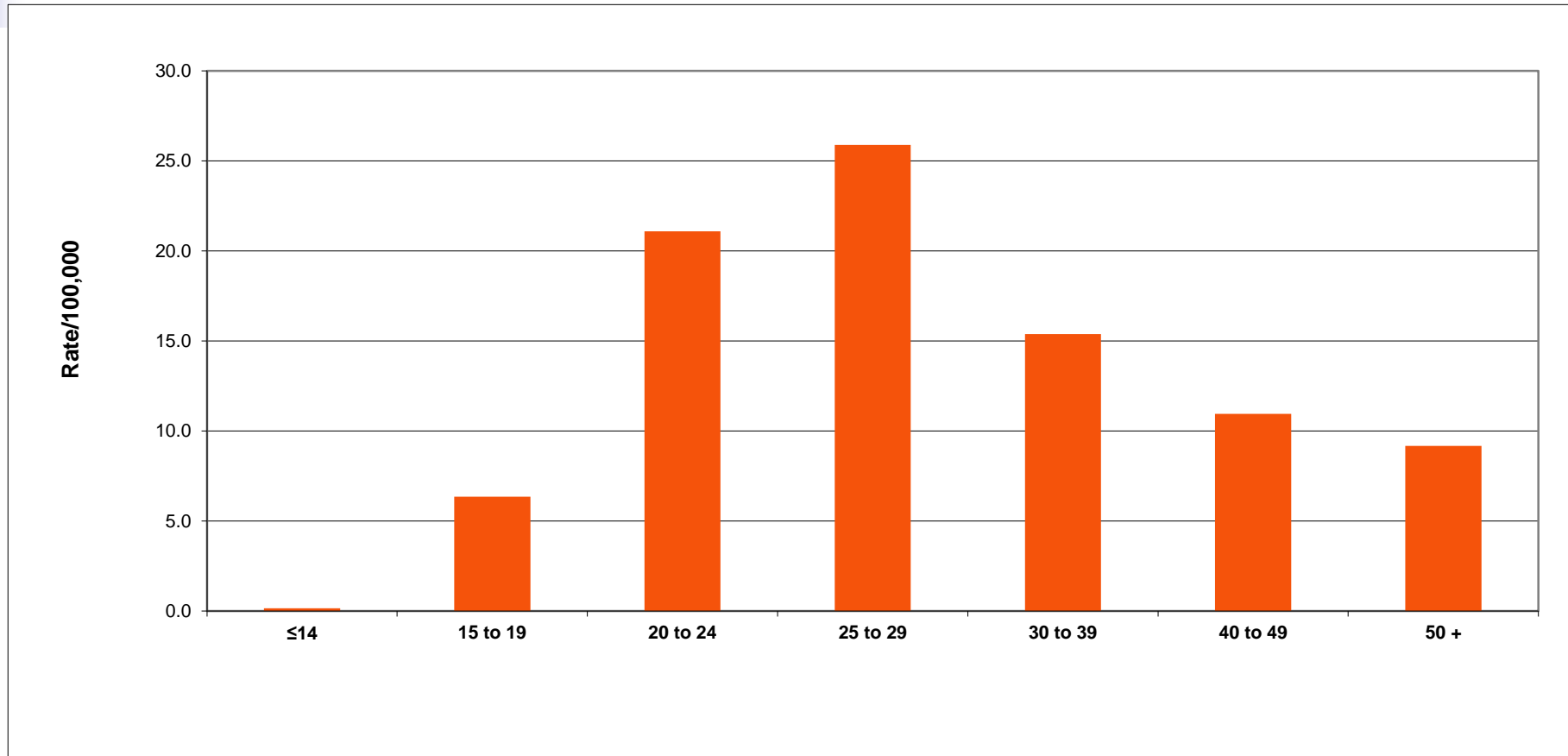
Sex	2017 Number(%)	2016 Number(%)	2015 Number(%)
Male	428 (78.2%)	401 (79.0%)	479 (77.1%)
Female	119 (21.8%)	106 (21.0%)	142 (22.9%)
Total	547	507	621

New Diagnosis Numbers (Percentage) of HIV and AIDS by Age at Diagnosis, 2017

Age Group	HIV Number(%)	AIDS Number(%)	HIV/AIDS Number(%)
14 and under	S	S	S
15-19	29(6.5)	S	29(5.3)
20-24	95(21.4%)	7(6.8%)	102 (18.6%)
25-29	100 (22.5%)	11(10.7%)	111 (20.3%)
30-39	100 (22.5%)	28(27.2%)	128 (23.4%)
40-49	68 (15.3%)	23(22.3%)	91 (16.6%)
50+	51 (11.5%)	33(32.0%)	84 (15.4%)
Total	444	103	547

S: Data are suppressed when counts are <5 or if determined identifiable.

New Diagnosis Rates of HIV/AIDS by Age at Diagnosis, 2017



Source: Indiana HIV/AIDS Surveillance Database
Rates based on U.S. Census, 2015

New Diagnosis Rates of HIV/AIDS by Age at Diagnosis, 2015-2017

Age Group	2017 Rate	2016 Rate	2015 Rate
14 and under	0.2	0.1	0.2
15-19	6.3	5.3	5.0
20-24	21.1	19.4	21.3
25-29	25.9	22.6	32.2
30-39	15.4	16.5	19.3
40-49	10.9	9.0	13.2
50+	9.2	8.6	9.2
Total	8.3	7.7	9.4

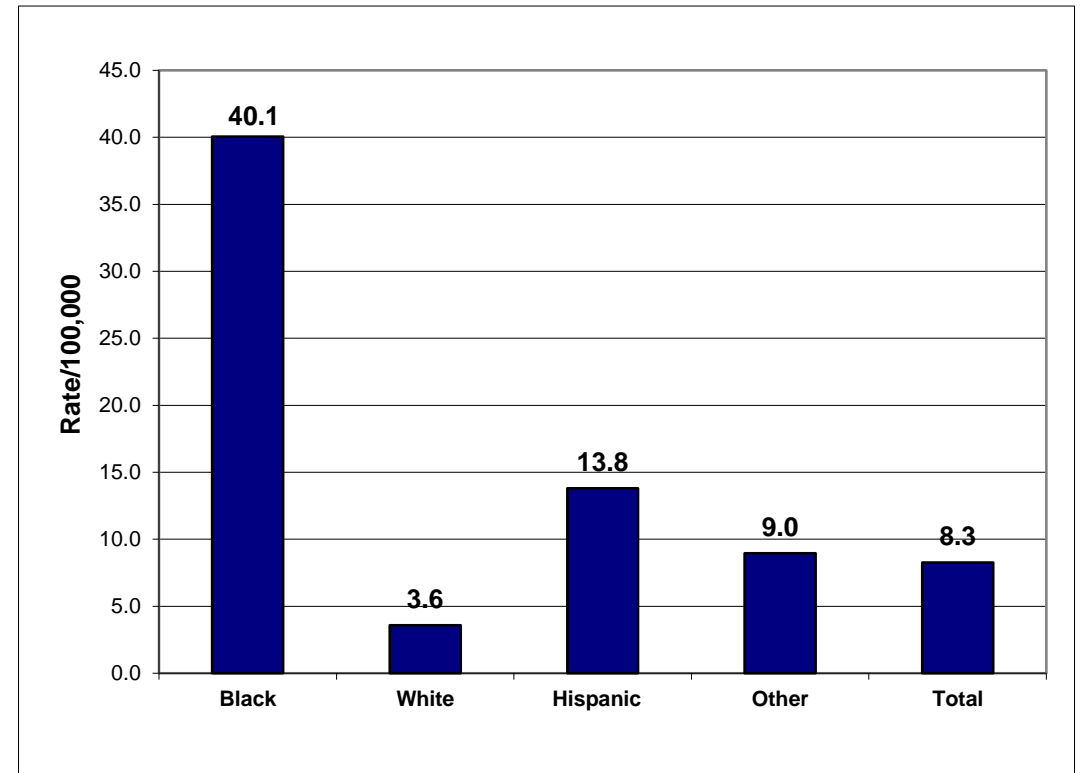
New Diagnosis Numbers (rate) of HIV and AIDS by Race/Ethnicity, 2017

Race/Ethnicity	HIV Number(Rate)	AIDS Number(Rate)	HIV/AIDS Number(Rate)
Black	213 (33.5)	42 (6.6)	255 (40.1)
White	165 (2.9)	39 (0.7)	204 (3.6)
Hispanic	44 (10.0)	17 (3.8)	61 (13.8)
Other	22 (7.3)	5 (1.7)	27 (9.0)
Total	444 (6.7)	103 (1.6)	547 (8.3)

Source: Indiana HIV/AIDS Surveillance Database
Rates based on U.S. Census, 2015

New Diagnosis Rates of HIV/AIDS by Race/Ethnicity, 2017

	Number	Percent	Rate
Black	255	46.6	40.1
White	204	37.3	3.6
Hispanic	61	11.2	13.8
Other	27	4.9	9.0
Total	547	100.0	8.3



Source: Indiana HIV/AIDS Surveillance Database
Rates based on U.S. Census, 2015

New Diagnosis Numbers (Percents) of HIV/AIDS by Race/Ethnicity, 2015-2017

Race/Ethnicity	2017 Number(%)	2016 Number(%)	2015 Number(%)
Black	255 (46.6%)	222 (43.8%)	198 (31.9%)
White	204 (37.3%)	208 (41.0%)	359 (57.8%)
Hispanic	61 (13.8%)	53 (10.5%)	45 (7.2%)
Other	27 (4.9%)	24 (4.7%)	19 (3.1%)
Total	547 (100.0%)	507 (100.0%)	621 (100.0%)

Source: Indiana HIV/AIDS Surveillance Database
Rates based on U.S. Census, 2015

New Diagnosis Numbers (Percents) of HIV/AIDS Among Males by Transmission, 2015–2017

Mode	2017 Number(%)	2016 Number(%)	2015 Number(%)
MSM	219 (40.0%)	178 (35.1%)	227 (36.6%)
MSM/PWID	10 (1.8%)	8 (1.6%)	12 (1.9%)
MSM/Hetero	33 (6.0%)	44 (8.7%)	37 (5.9%)

*New Diagnosis Numbers (Percents) of HIV/AIDS by Transmission, 2015–2017Cont..**

Mode	2017 Number(%)	2016 Number(%)	2015 Number(%)
PWID	15 (2.7%)	18 (3.6%)	177 (28.5%)
Heterosexual	120 (21.9%)	121 (23.9%)	91 (14.6%)
Mother HIV+	0 (0.0%)	0 (0.0%)	3 (0.5%)
PWID/Hetero	22 (4.0%)	21 (4.1%)	55 (8.9%)
Other	128 (23.6%)	117 (23.0%)	19 (3.1%)
Total HIV/AIDS	547 (100.0%)	507 (100.0%)	621 (100.0%)

Source: Indiana HIV/AIDS Surveillance Database
Rates based on U.S. Census, 2015

*HIV/AIDS New Diagnosis Among Males by Mode of Transmission and Race/Ethnicity, 2017**

Mode	Black		Hispanic		White		Other	
	Number	Rate	Number	Rate	Number	Rate	Number	Rate
MSM	96	31.3	26	11.3	86	3.1	11	7.3
MSM/PWID	S	S	S	S	8	0.3	10	0.3
MSM/Hetero	14	4.6	S	S	15	0.5	33	1.0

*MSM, MSM/PWID, MSM/Hetero rates are based on Indiana male population (per 100,000).

S: Data are suppressed when counts are <5 or if determined identifiable.

HIV/AIDS New Diagnosis by Mode of Transmission and Race/Ethnicity, 2017*

Mode	Black		Hispanic		White		Other	
	Number	Rate	Number	Rate	Number	Rate	Number	Rate
PWID	S	S	S	S	10	0.2	S	S
Heterosexual Contact	74	11.6	17	3.8	25	0.4	S	S
PWID/Heterosexual Contact	S	S	S	S	18	0.3	S	S
Other	66	10.4	10	2.3	42	0.7	10	3.3
Total Population**	255	40.1	61	13.8	204	3.6	27	9.0

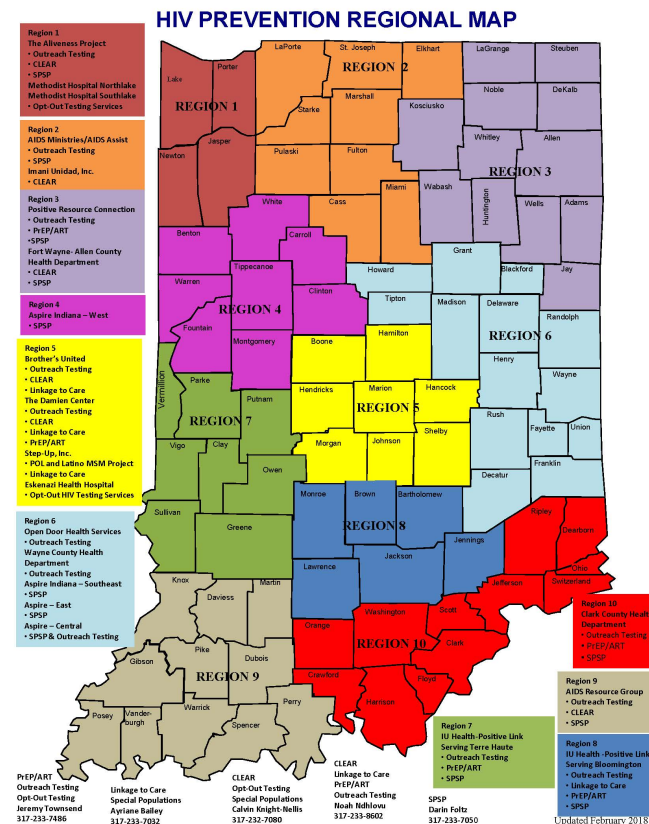
* Rates are based on Indiana total population (per 100,000).

**Total Population = Indiana HIV/AIDS population

S: Data are suppressed when counts are <5 or if determined identifiable.

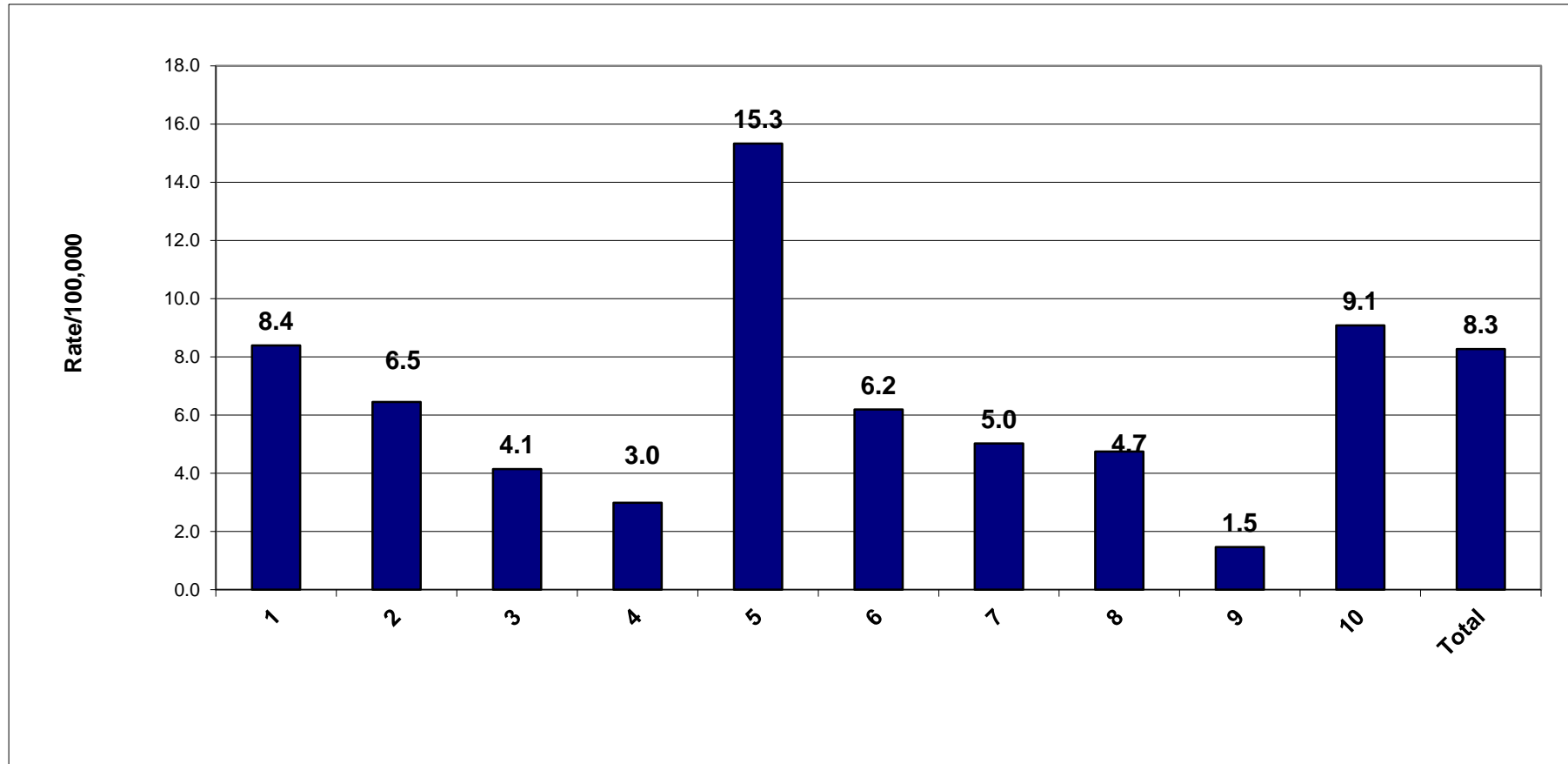
HIV/AIDS New Diagnosis Numbers, Percents and Rates by Region, 2017

Health Region	Total	Percent	Rate
1	59	10.8	8.4
2	49	9.0	6.5
3	33	6.0	4.1
4	10	1.8	3.0
5	277	50.6	15.3
6	41	7.5	6.2
7	14	2.6	5.0
8	17	3.1	4.7
9	7	1.3	1.5
10	40	7.3	9.1
Total	547	100.0	8.3



Source: Indiana HIV/AIDS Surveillance Database
Rates based on U.S. Census, 2015

HIV/AIDS New Diagnosis Rates by Health Regions, 2017



Source: Indiana HIV/AIDS Surveillance Database
Rates based on U.S. Census, 2015