



Help Me Grow Indiana

Monthly News and Updates

Ninth Annual Help Me Grow National Forum was April 4-6

Affiliates and partners networked and created new partnerships at the annual Help Me Grow (HMG) National Forum hosted earlier this month by the National Center.

The Indiana HMG team presented a poster on the funding streams that we have leveraged to bring Help Me Grow to Indiana.

The event provided increasing national visibility of the network's collective efforts and accomplishments and solicits promising ideas and innovations from across the network.

Dr. Nadine Burke Harris presented the keynote address. Founder of the Center for Youth Wellness in Bayview Hunters Point San Francisco and pioneer in the field of medicine and a pediatrician, Dr. Burke Harris is a leader in the movement to transform how we respond to early childhood adversity and the resulting toxic stress that dramatically impacts our health and longevity.



Opportunities to get involved

Help Me Grow Leadership Team

ELAC Child Development and Well Being Workgroup
Fourth Thursday of each month from 10 a.m. to noon EST- St. Mary's Childcare

Help Me Grow Centralized Telephone Access Workgroup

Contact SBeverly@isdh.IN.gov for more information

Help Me Grow Child Health Provider Outreach Workgroup

TBD

Help Me Grow Data Collection and Analysis Workgroup

ELAC Data Workgroup 4th Thursday of each month from 1 p.m. to 3 p.m. EST
Ice Miller Offices One American Square

Help Me Grow Community and Family Outreach Workgroup

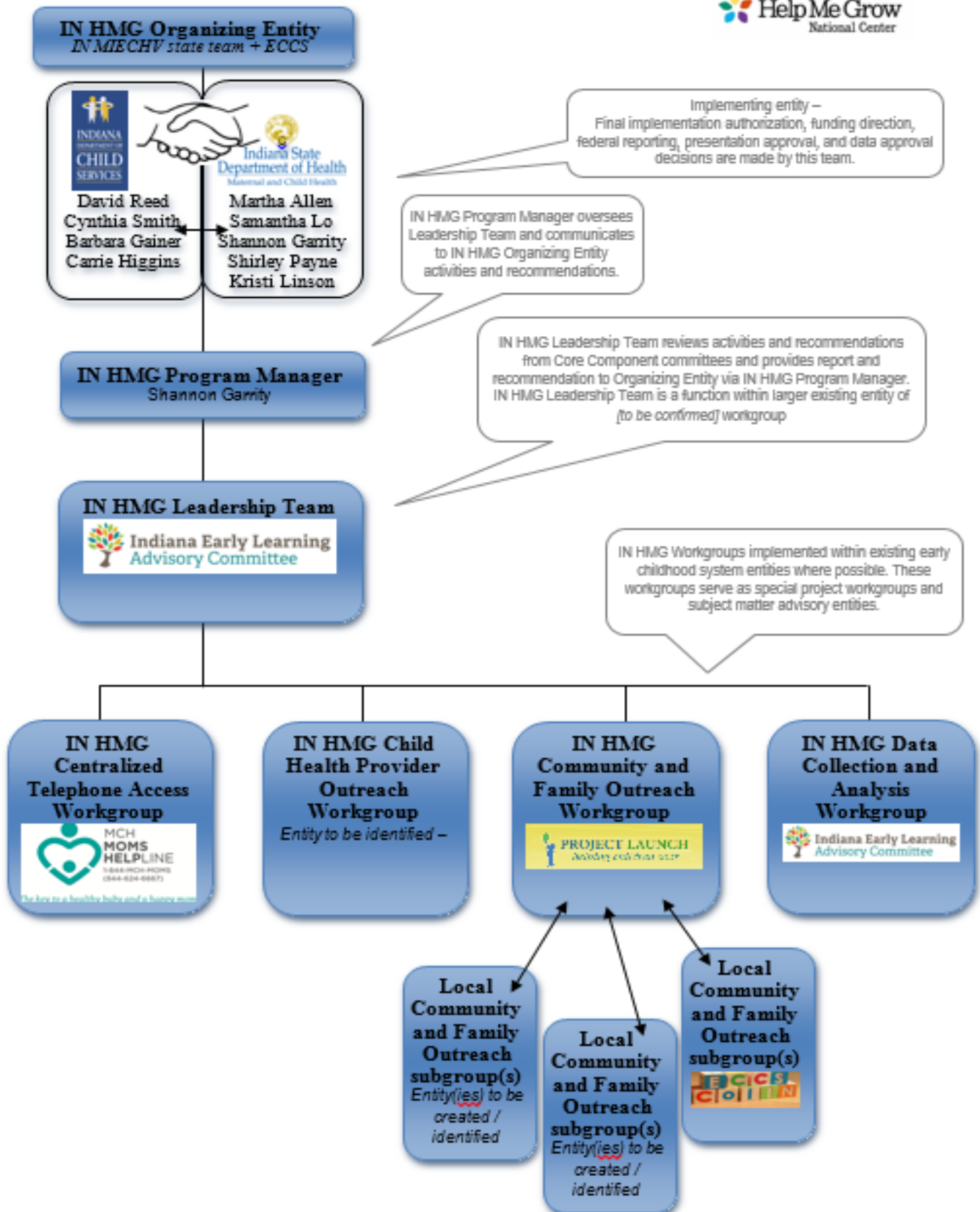
Project LAUNCH State Workgroup
Fourth Wednesday of every month @ 10a.m. to noon

Family Engagement Workgroups– ECCS COIIN– 11 a.m. to 1p.m. May 21, TBD

Next Steps

- Help Me Grow workgroups will receive a readiness assessment that will help guide implementation
- Contact KLinson@isdh.in.gov to schedule a Help Me Grow presentation

Help Me Grow Indiana Organizational Chart



The Help Me Grow (HMG) system is designed to help states and communities leverage existing resources to ensure they identify vulnerable children early, link families to community based services and empower families to support their children's healthy development through the implementation of four core components:

- Child health care provider outreach
- Community outreach
- Centralized call center
- Data collection

The vision of the Indiana Help Me Grow system is to:

- Help families, primary care providers and other community-based providers, including home visiting services, identify developmental or behavioral concerns in children.
- Provide a statewide resource directory with a feedback loop to identify gaps in services targeted and developed in pilot sites.
- Utilize the MCH MOMS Helpline as the centralized call center to connect families with specialized programs and services focused on their needs.

Help Me Grow pilot sites

