

From August 4 to 8, Ramzi Nimry (Trauma and Injury Prevention Program Director) was in charge of site supervision of the NW region's coronavirus drive thru testing site at St. Timothy Community Church in Gary.

On August 21, Ramzi Nimry (Trauma and Injury Prevention Program Director) and Trinh Dinh (Data Analyst) attended the Indiana State Trauma Care Committee (ISTCC) held virtually.

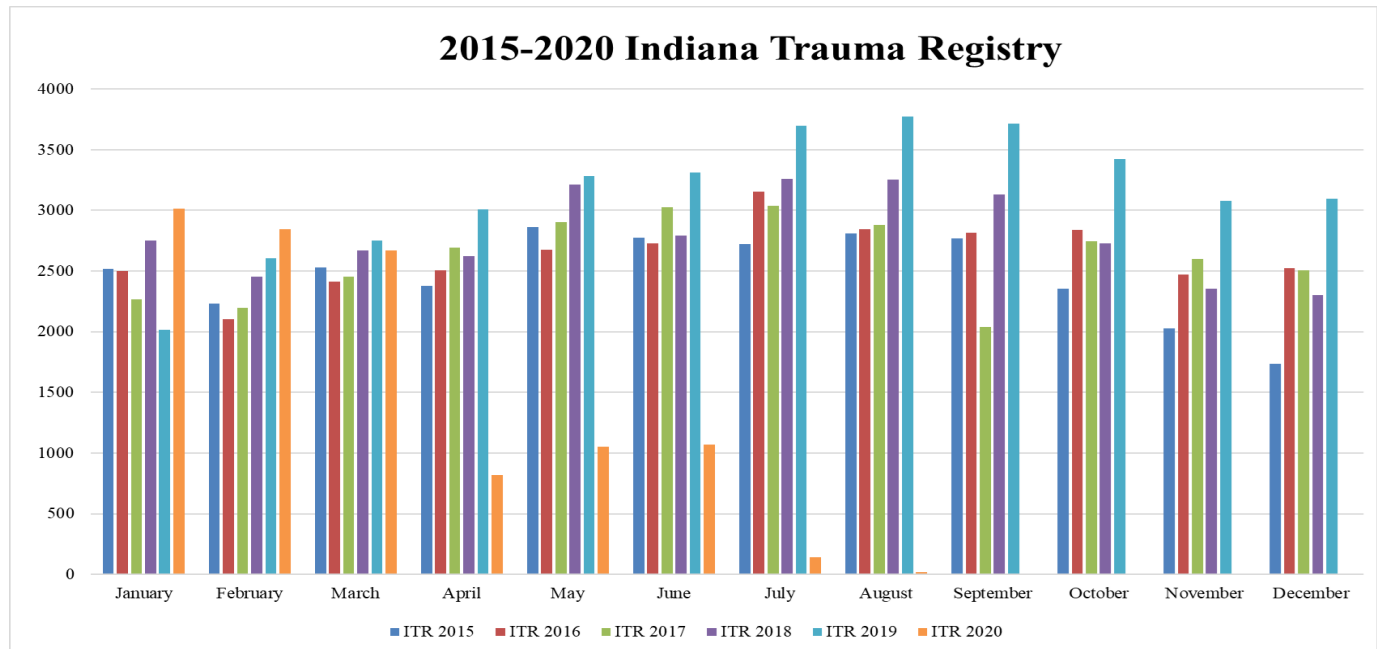
On August 21, Ramzi Nimry (Trauma and Injury Prevention Program Director) and Trinh Dinh (Data Analyst) attended the Indiana Trauma Network (ITN) held virtually.

On August 25, Ramzi Nimry (Trauma and Injury Prevention Program Director) trained Floyd County on the Indiana Coroner Case Management System (CCMS).

The Indiana Trauma Registry (ITR) monthly report is a dashboard style report for the Indiana Criminal Justice Institute (ICJI) and any other party concerned about trauma in Indiana. This report highlights the four data quality measures for the ICJI grant: completeness, timeliness, uniformity, integration and accessibility. This report uses data within the ITR, with an emphasis on motor vehicle collisions (MVC).

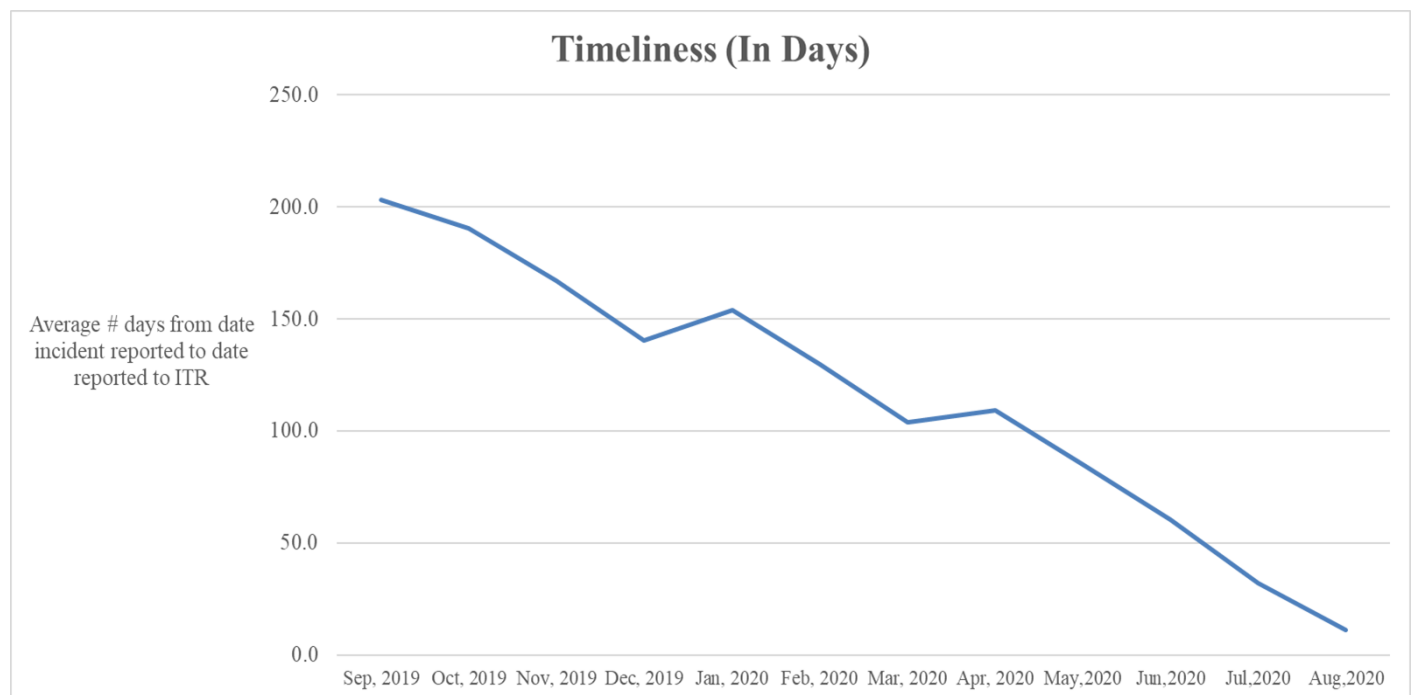
Completeness

The Hospital Discharge database, also maintained by the ISDH, contains all records of patients cared for in Indiana hospitals. We compared patient records from the ITR with the Hospital Discharge database to know how complete is the ITR's data. The hospital discharge database is 72% complete.



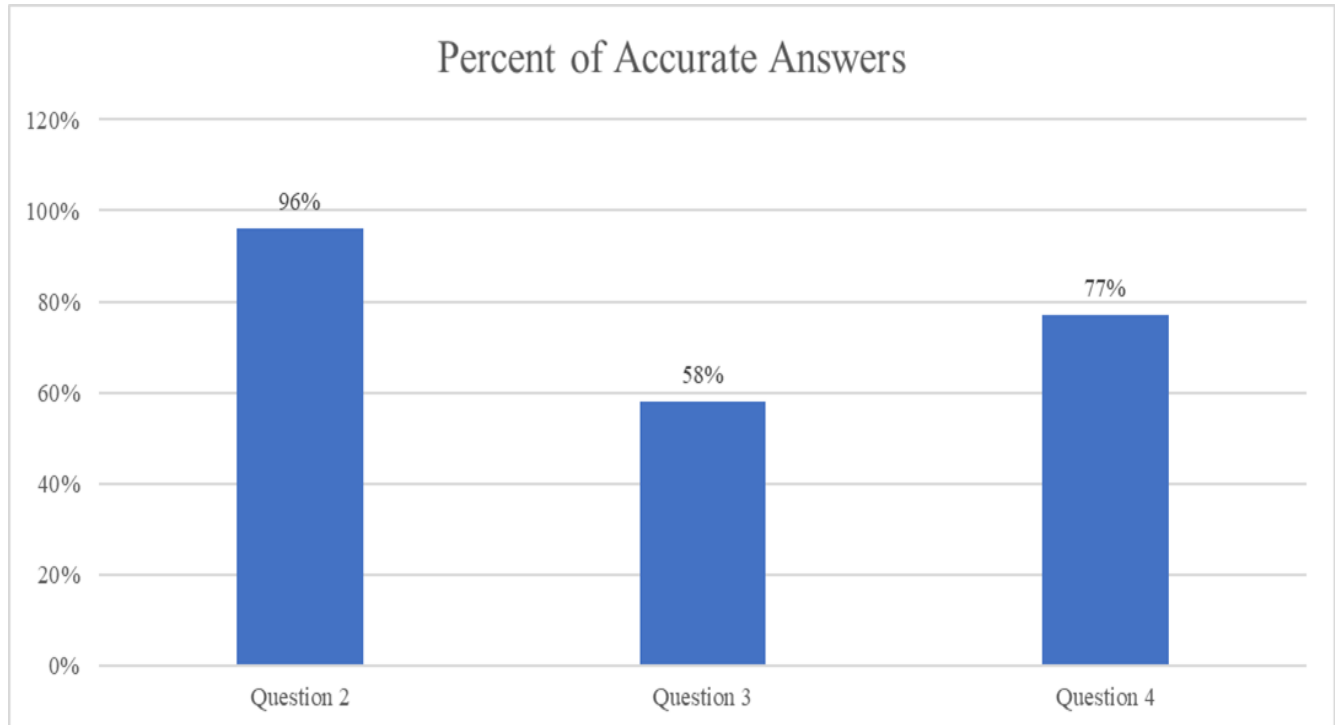
Timeliness

Timeliness increases as facilities wait until the data submission deadline to submit data to the ITR. Hospitals are asked to report data on the national trauma (TQIP) reporting schedule. The average timeliness in the past year was 115 days.



Uniformity

In August, there were 24 participants from 20 (16% of hospitals with EDs in Indiana) hospitals who completed the quiz. The percent correct was 65% and the free-marginal kappa was 0.42. Activities to improve the uniformity of data include trauma registrar training throughout the state and at the Indiana State Department of Health.



Integration

The number of linked EMS to trauma cases was 1,639 for Q3 2018 data. Trauma data are due on a quarterly basis.

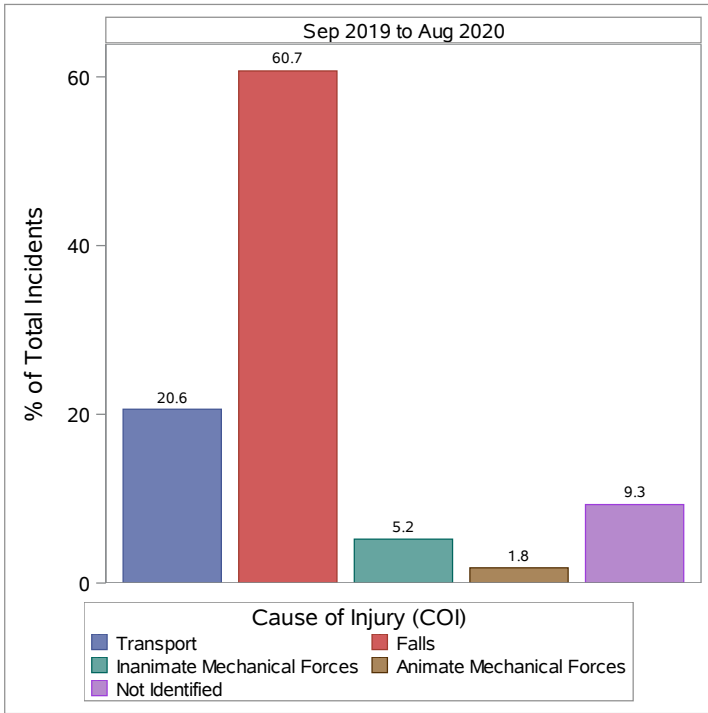
Accessibility

There was 1 aggregate requests (2 day on average) in August. There were no identifiable data requests.

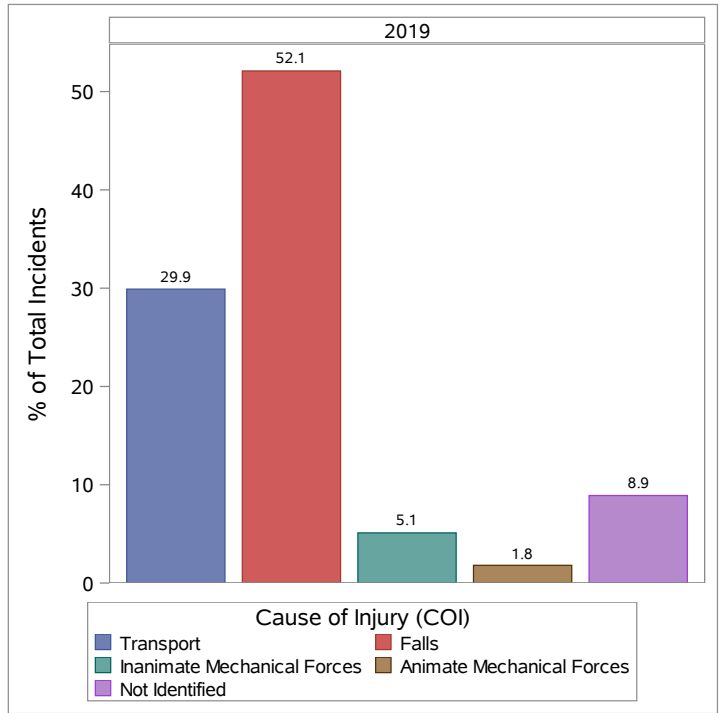
August 2020 Indiana Trauma Registry Report

Overall Cause of Injury (COI)

September 2019 - August 2020: 25192 Incidents

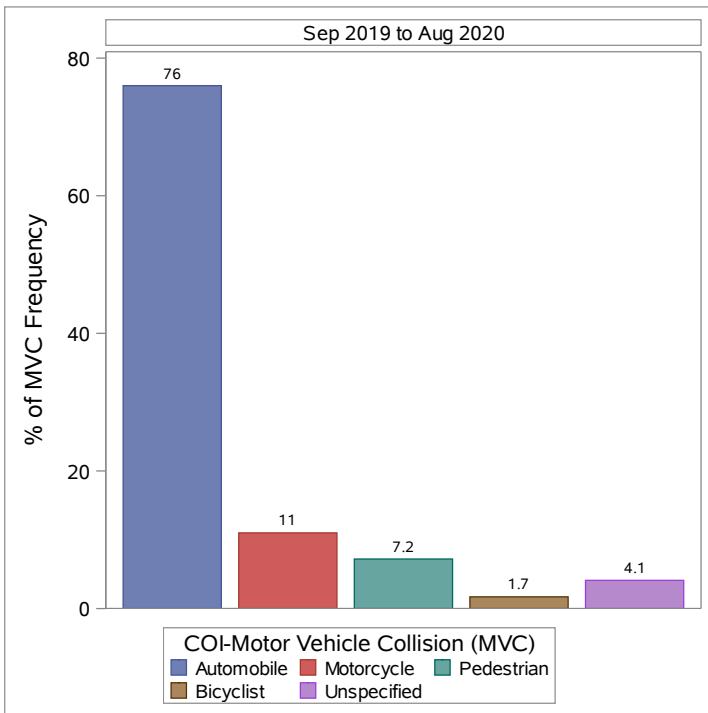


2019: 38748 Incidents

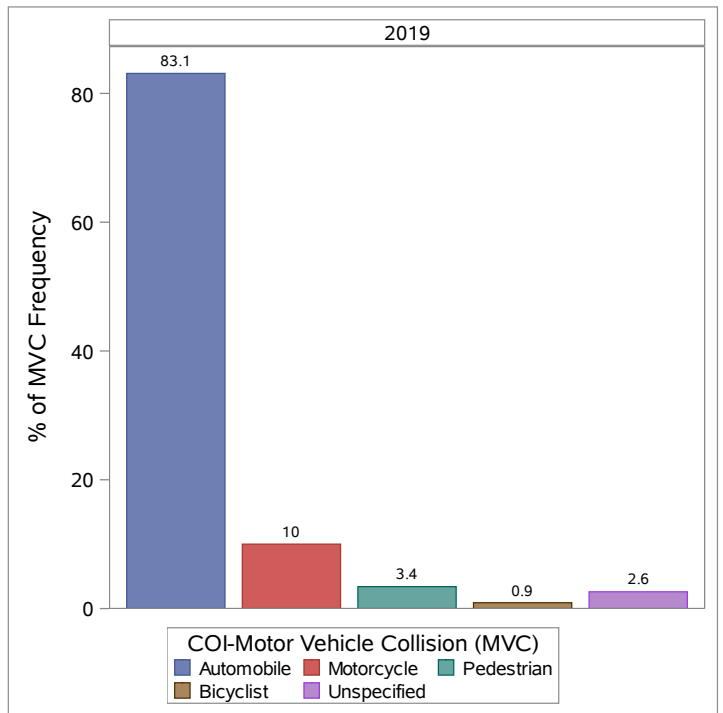


COI-Motor Vehicle Collision (MVC)

September 2019 - August 2020: 3980 Incidents



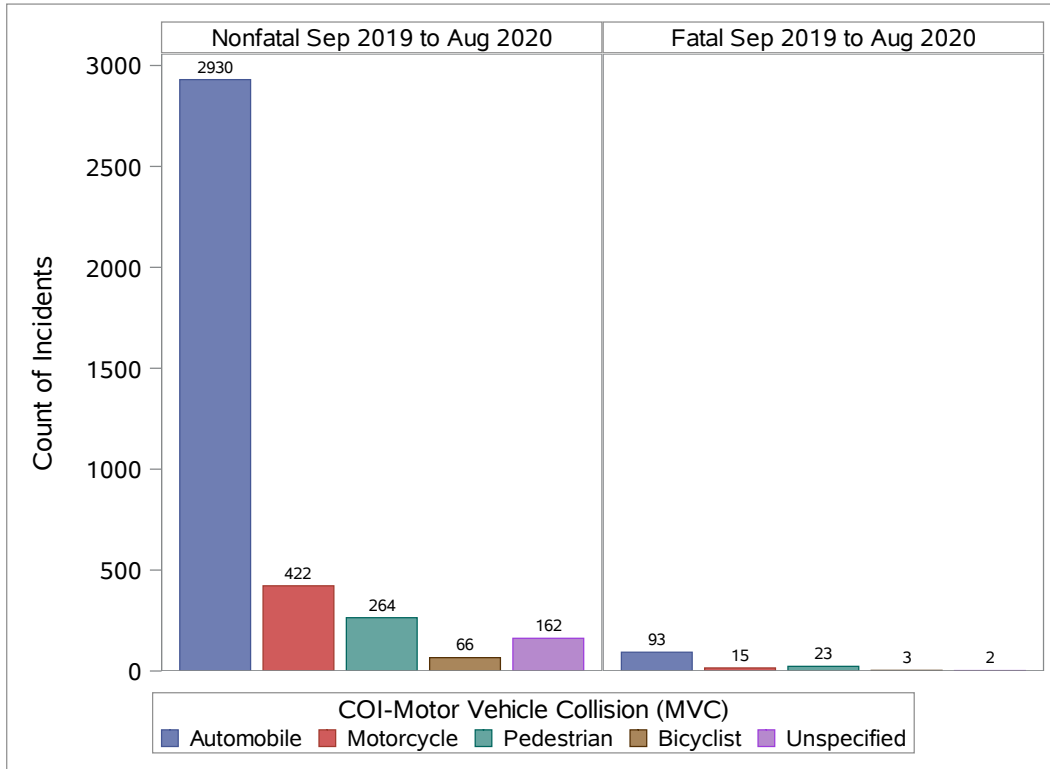
2019: 9263 Incidents



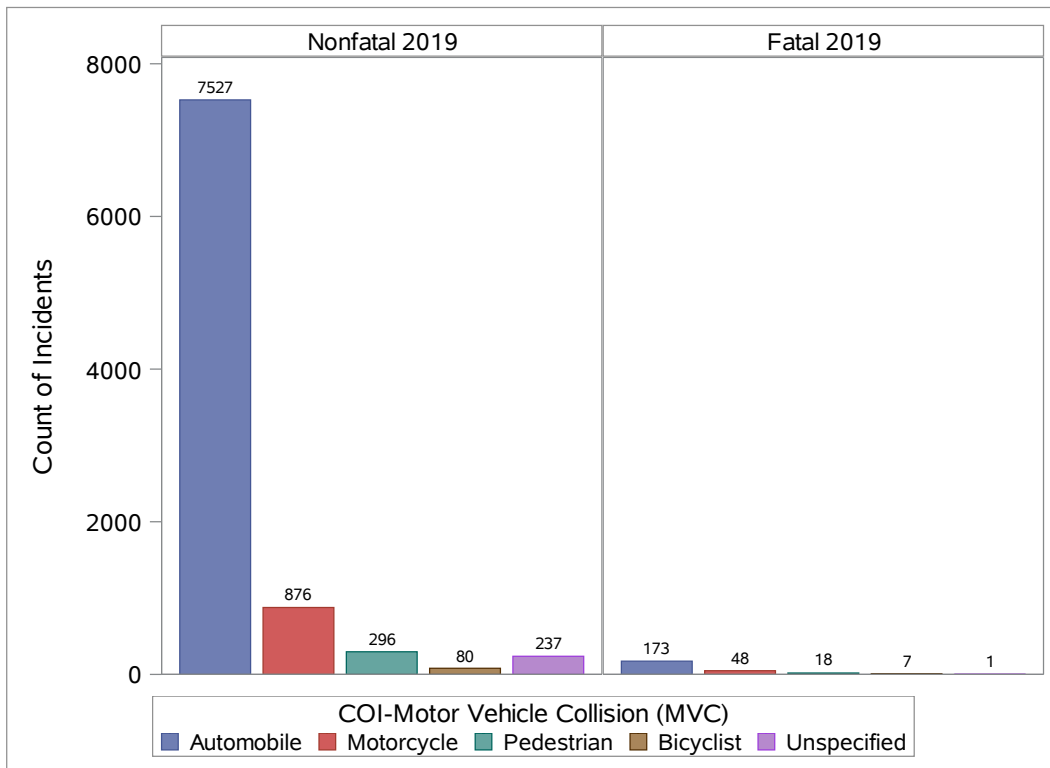
August 2020 Indiana Trauma Registry Report

Motor Vehicle Collision: Nonfatal Incidents and Fatal Incidents

September 2019 - August 2020



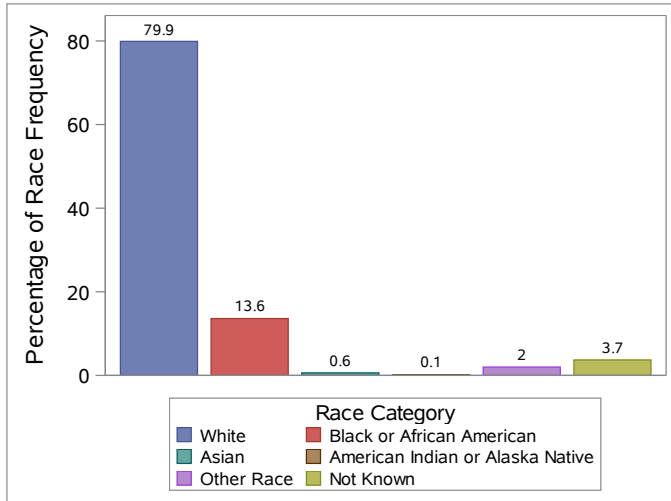
2019



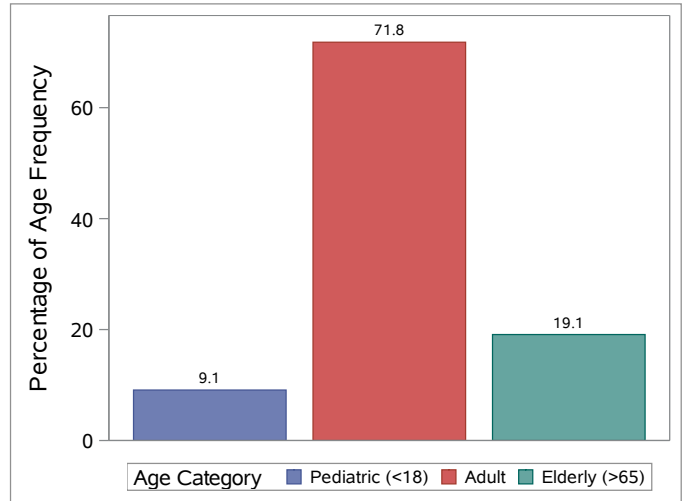
August 2020 Indiana Trauma Registry Report

Overall Motor Vehicle Collisions (MVC) September 2019 - August 2020

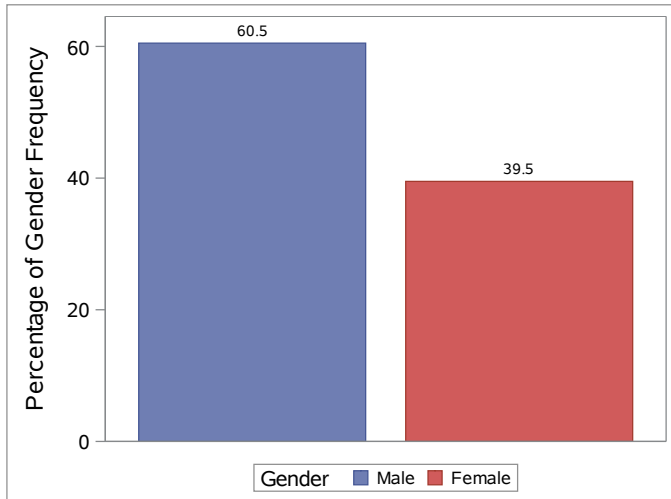
Race



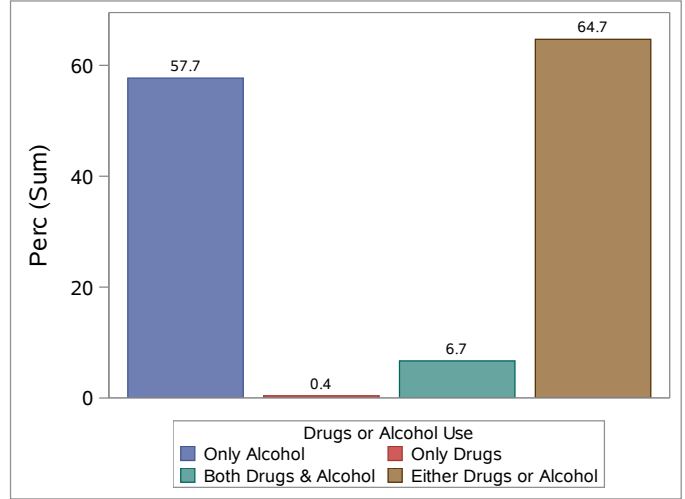
Age



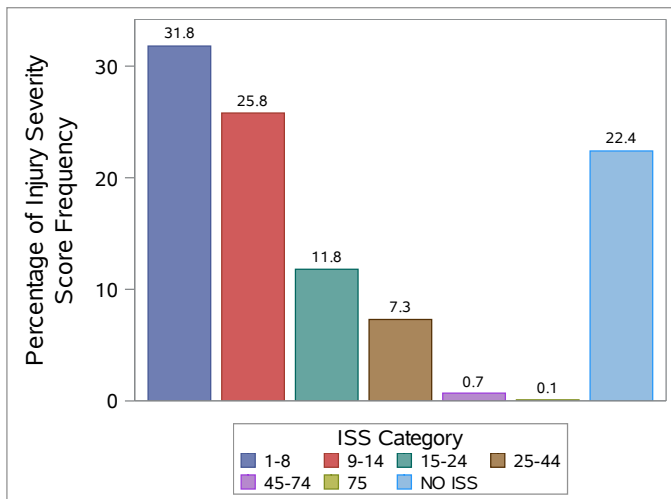
Gender



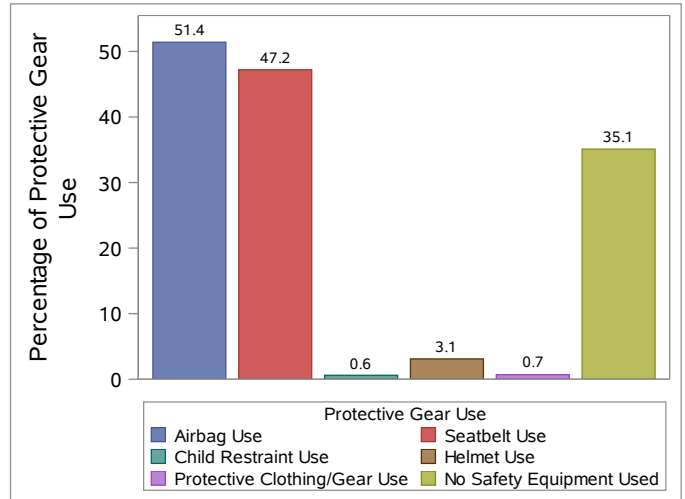
Drug & Alcohol Use



Injury Severity Score



Protective Devices

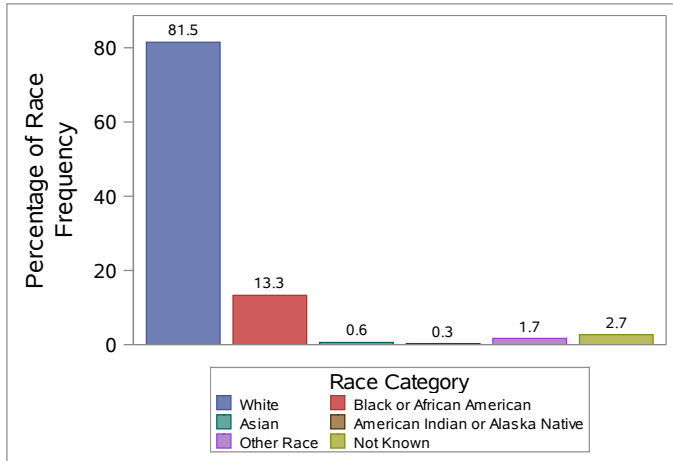


Injury Severity Score (ISS) is a measure of how bad the injury is. Scores over 15 are considered major trauma. A score of 75 is considered not survivable.

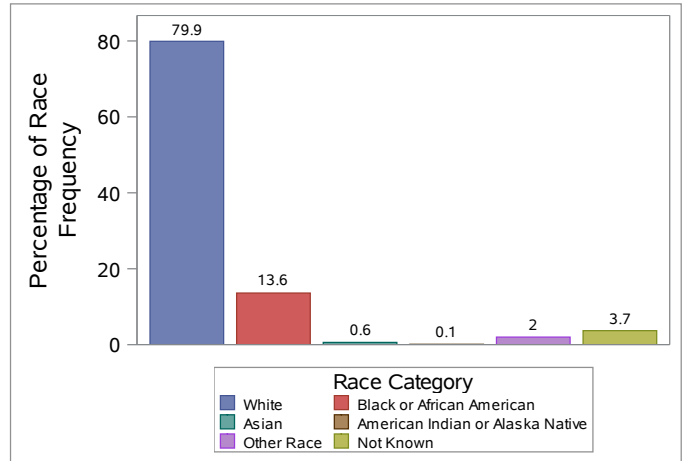
August 2020 Indiana Trauma Registry Report

Motor Vehicle Collisions by Race

2019

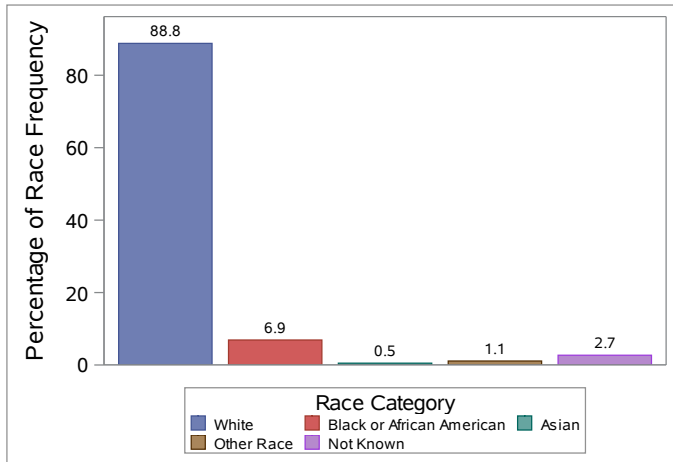


September 2019 - August 2020

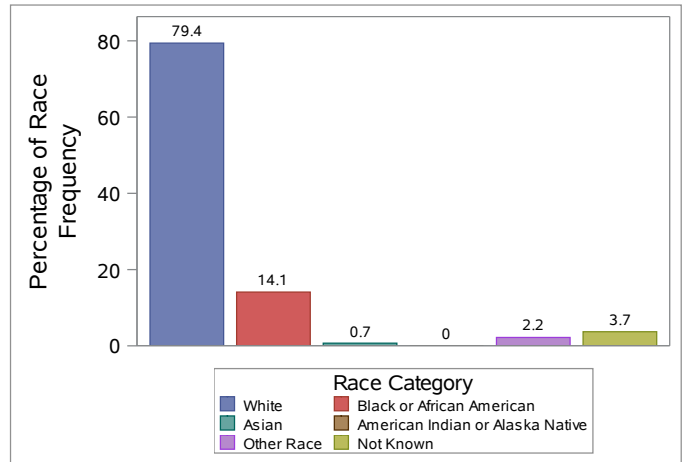


September 2019 - August 2020: MVC by Collision Type and Race

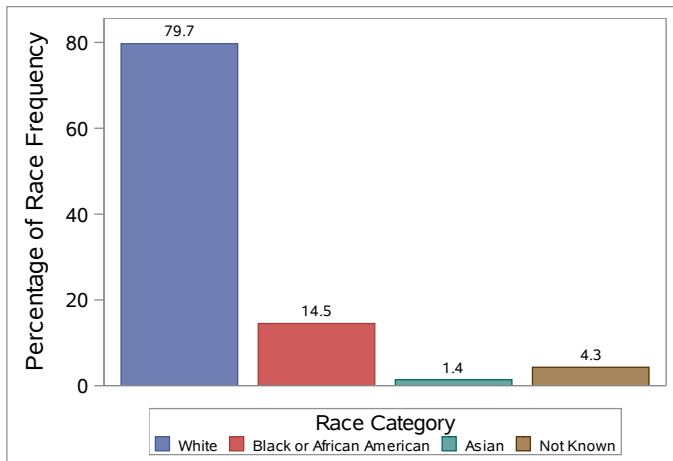
Motorcycle



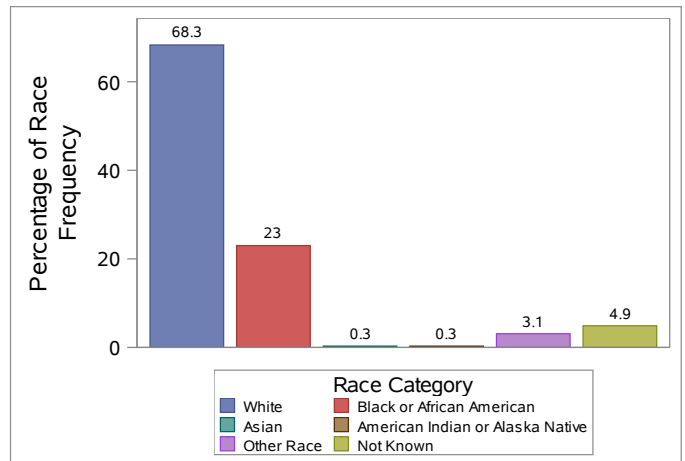
Automobile



Bicyclist



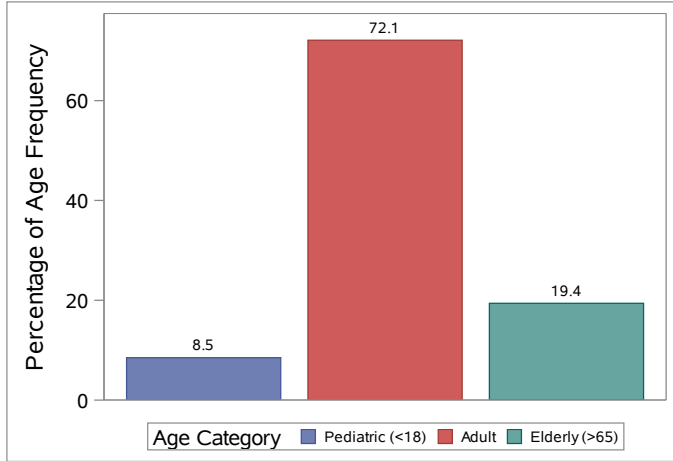
Pedestrian



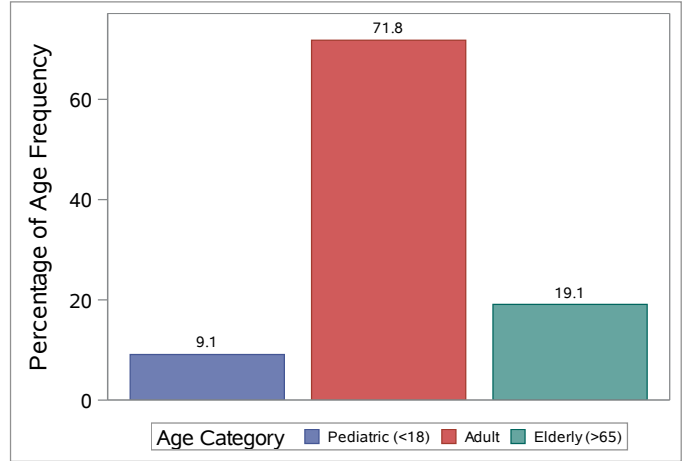
August 2020 Indiana Trauma Registry Report

Motor Vehicle Collision by Age Category

2019

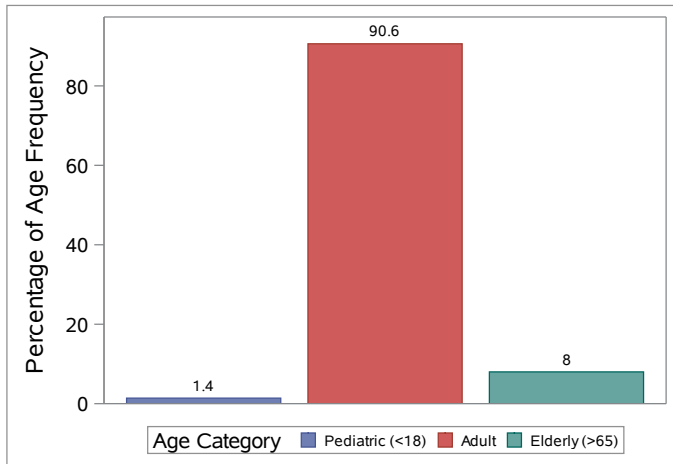


Race

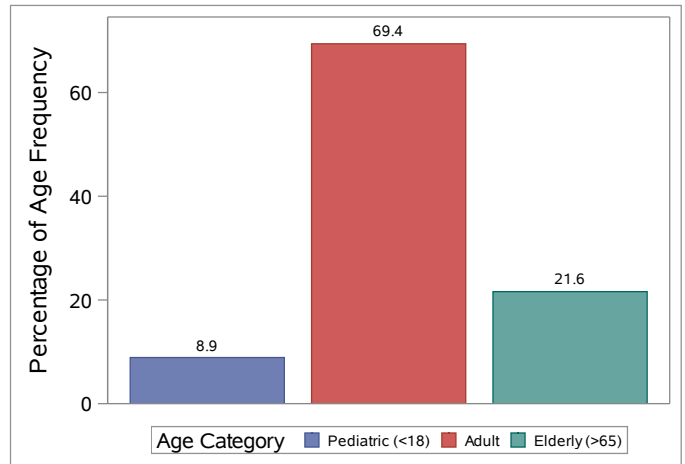


September 2019 - August 2020: MVC by Collision Type and Age Category

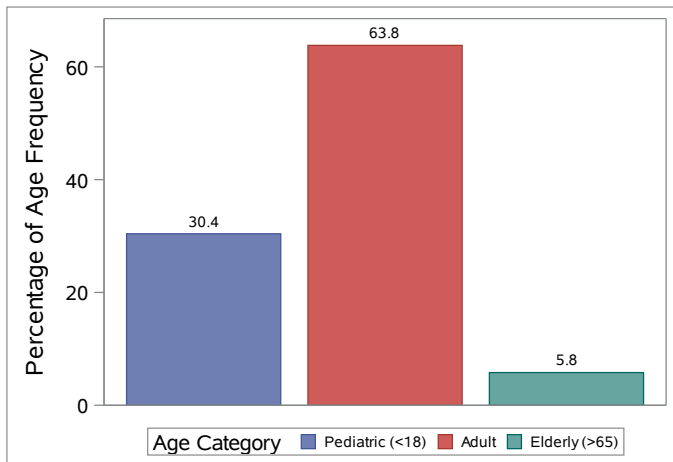
Motorcycle



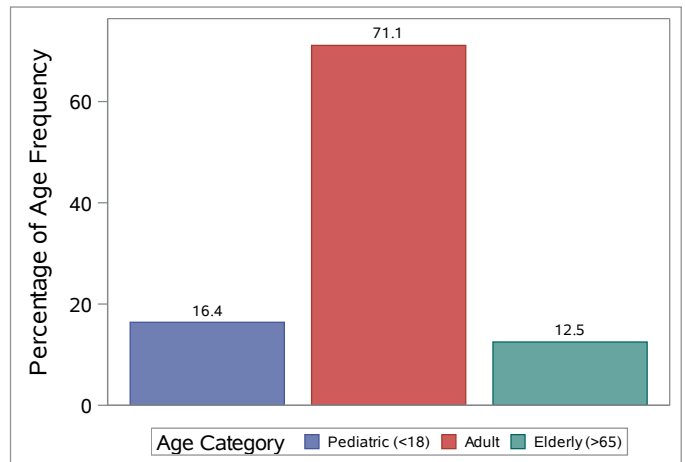
Automobile



Bicyclist



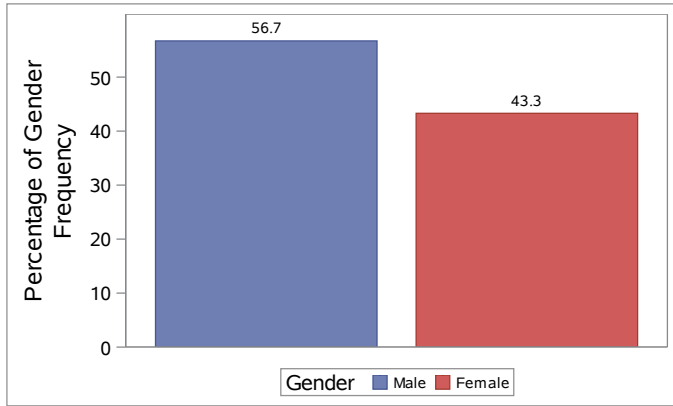
Pedestrian



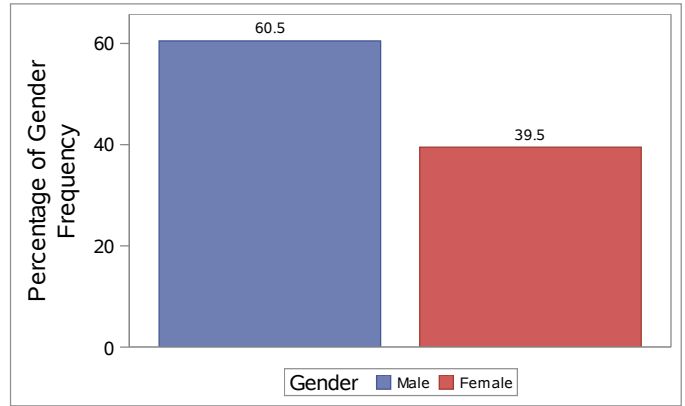
August 2020 Indiana Trauma Registry Report

Motor Vehicle Collision by Gender

2019

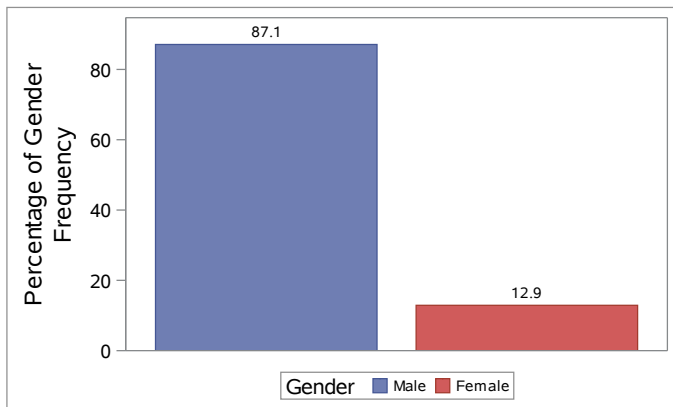


Race

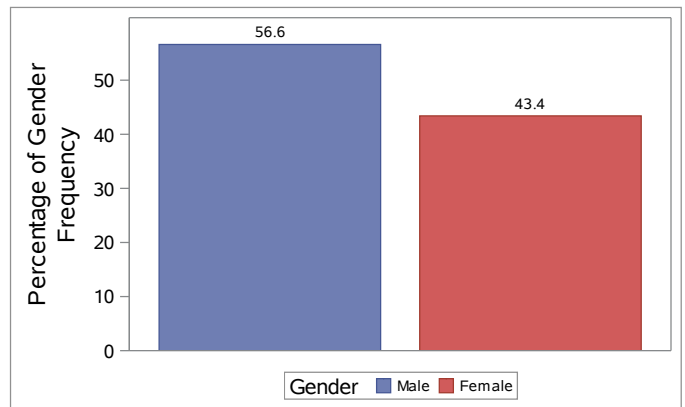


September 2019 - August 2020: MVC by Collision Type and Gender

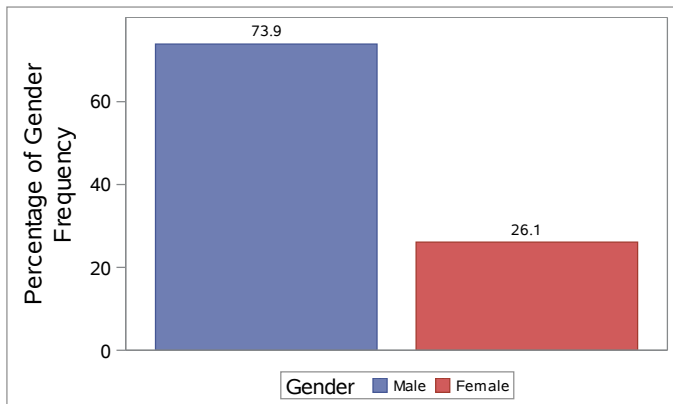
Motorcycle



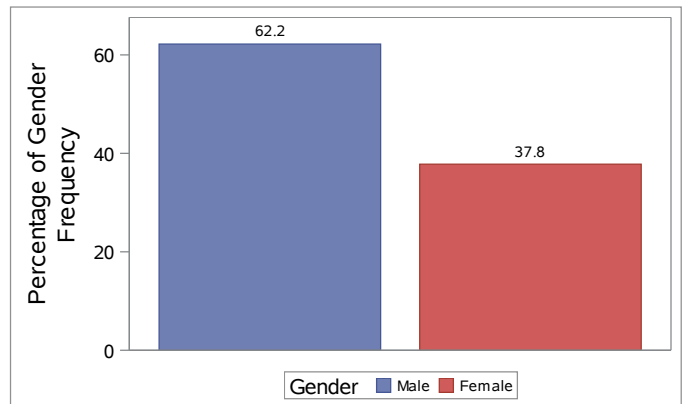
Automobile



Bicyclist



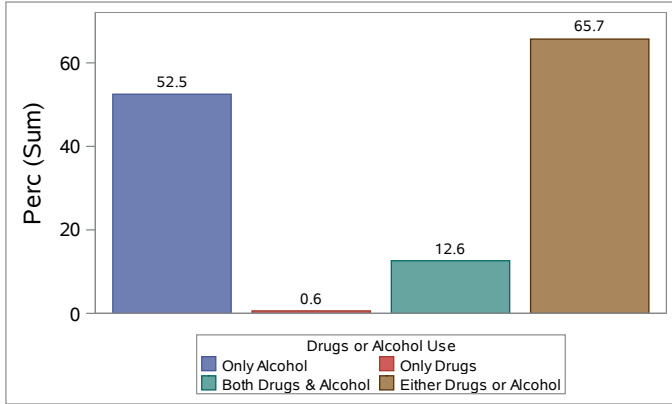
Pedestrian



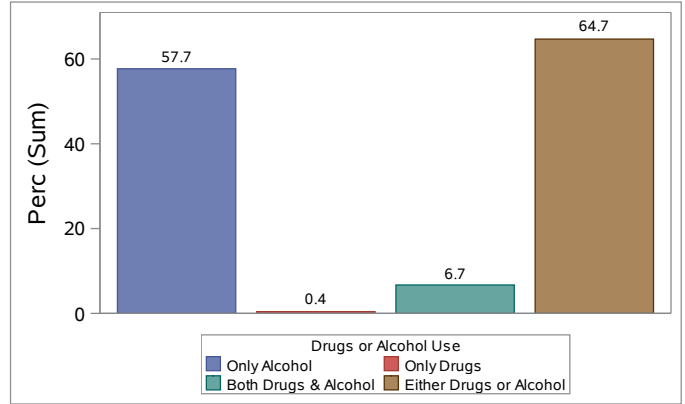
August 2020 Indiana Trauma Registry Report

Motor Vehicle Collision by Drug & Alcohol Use

2019

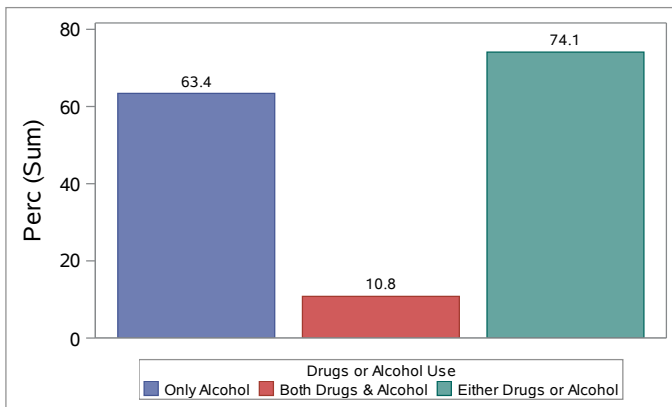


September 2019 - August 2020

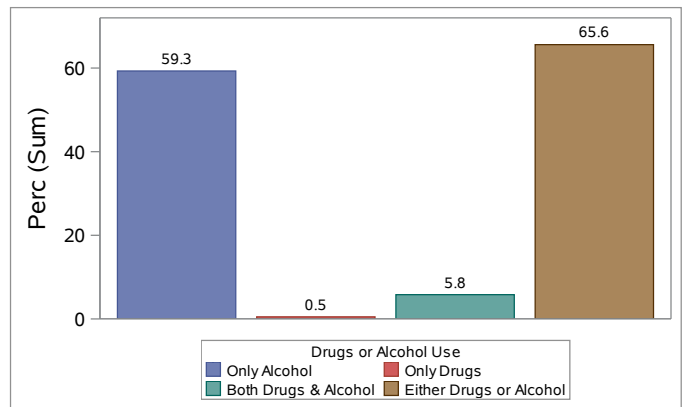


September 2019 - August 2020: MVC by Collision Type and Drug & Alcohol Use

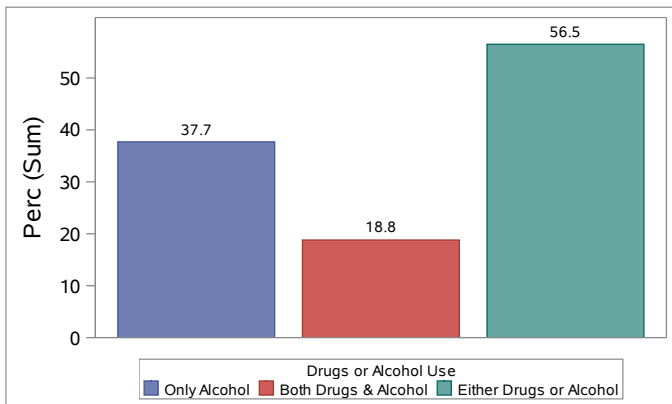
Motorcycle



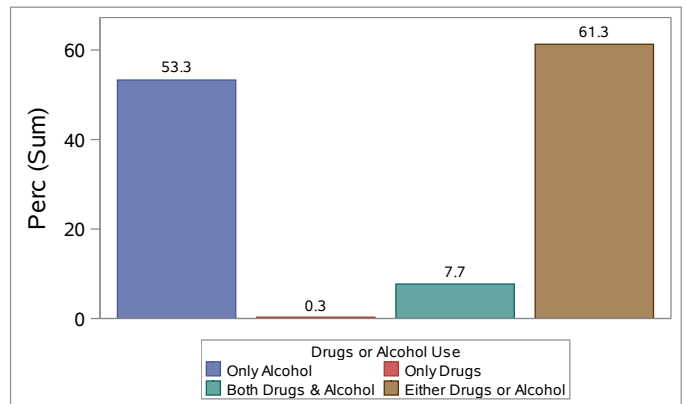
Automobile



Bicyclist



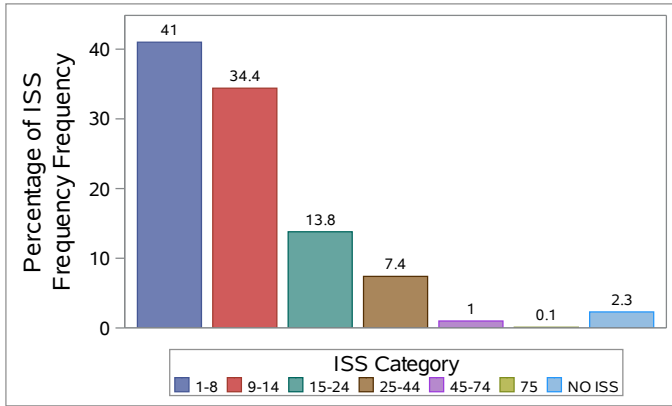
Pedestrian



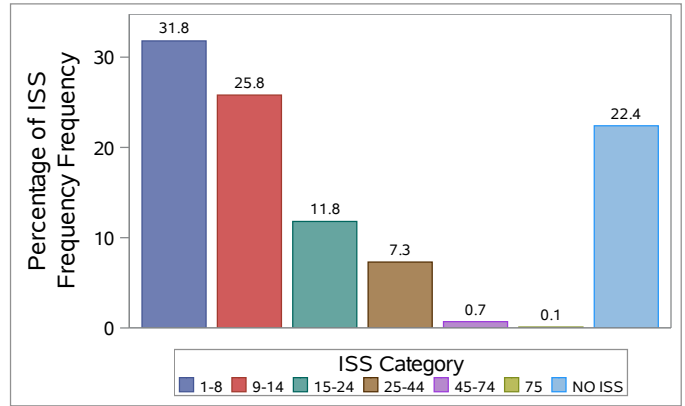
August 2020 Indiana Trauma Registry Report

Motor Vehicle Collision by Injury Severity Score

2019

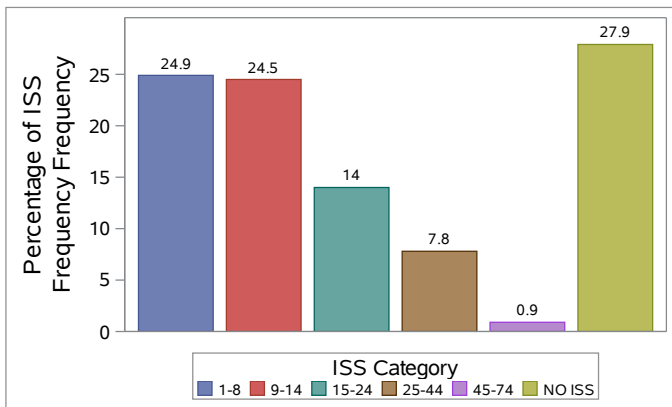


September 2019 - August 2020

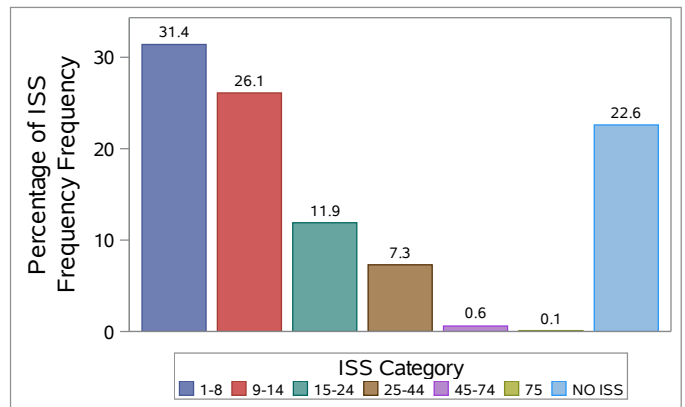


September 2019 - August 2020: MVC by Collision Type and ISS Score

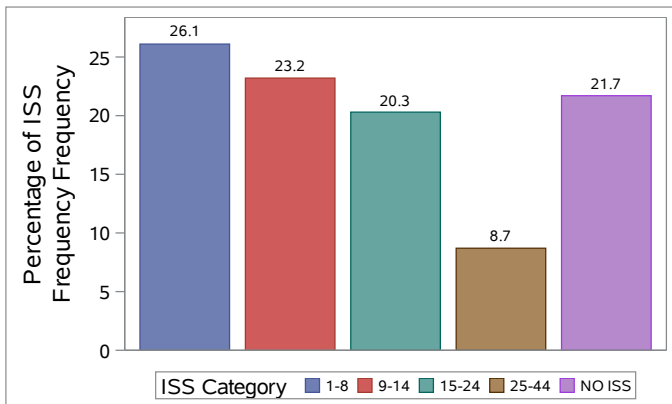
Motorcycle



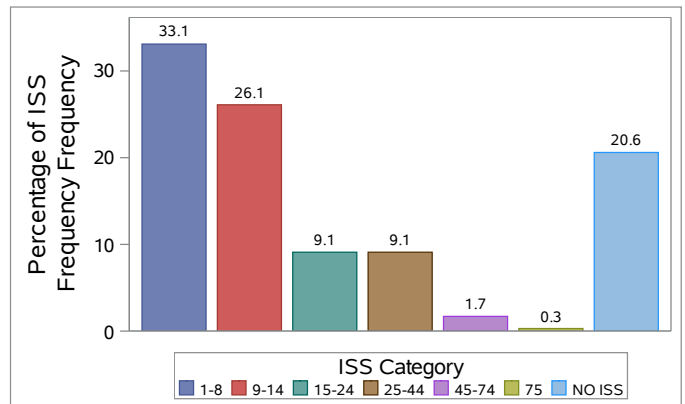
Automobile



Bicyclist



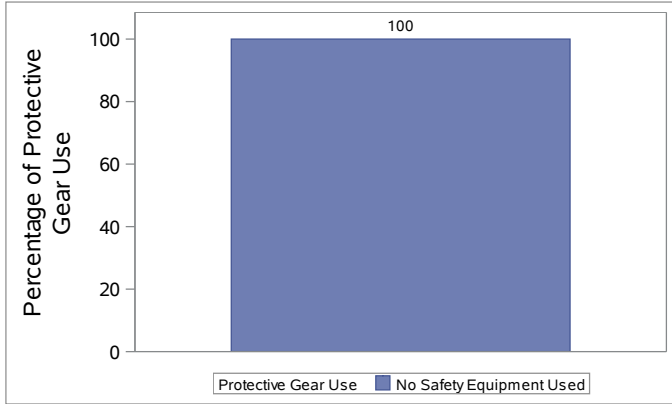
Pedestrian



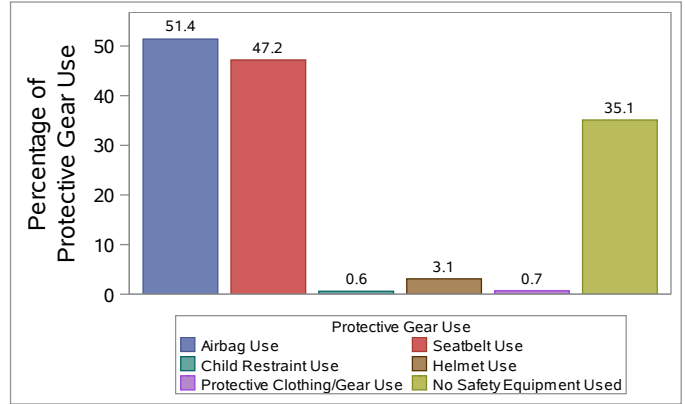
August 2020 Indiana Trauma Registry Report

Motor Vehicle Collision by Protective Devices

2019

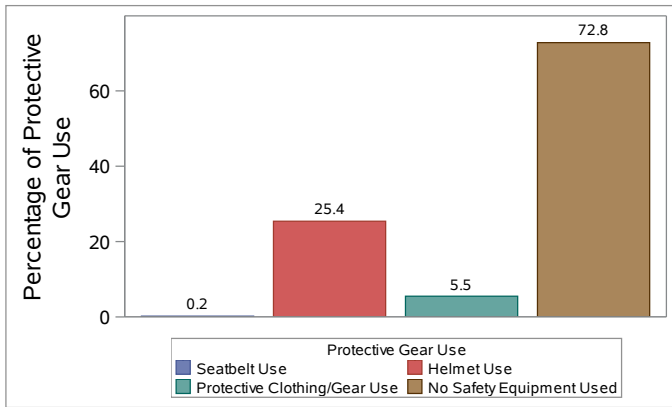


September 2019 - August 2020

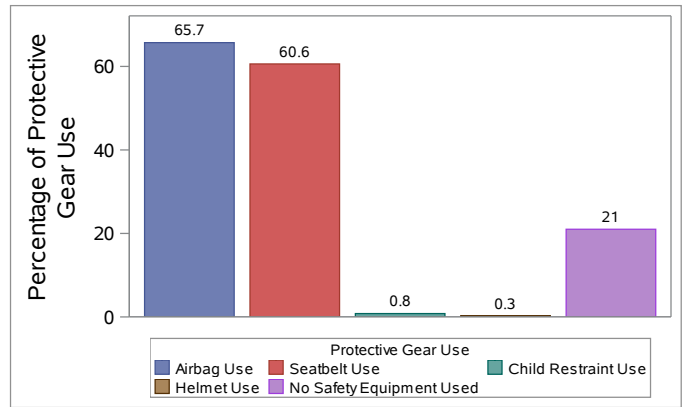


September 2019 - August 2020: MVC by Collision Type and Protective Gear Use

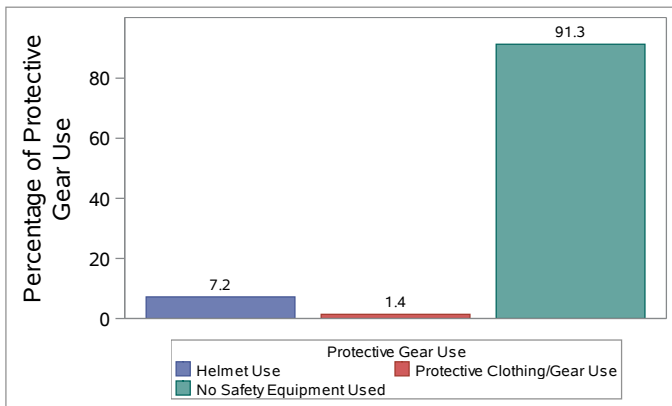
Motorcycle



Automobile



Bicyclist



Pedestrian

