

# Should you let your kids or pets play in this?

**BAD IDEA!**

Algae are common in lakes and rivers. But at high concentrations a type called blue-green algae can make people and animals sick.

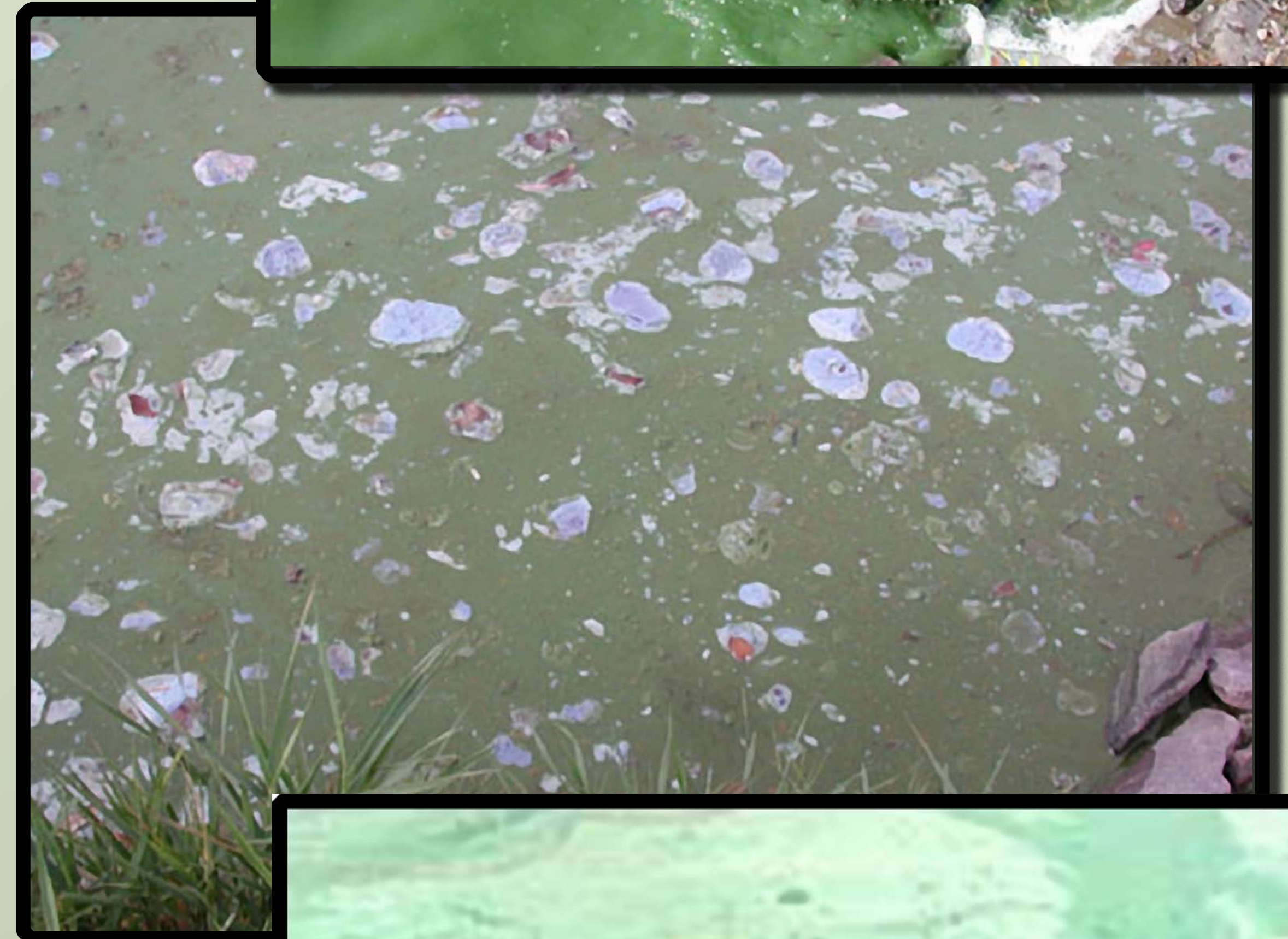
## What to look for:

- ▼ Does the water look pea soupy or have a greenish hue?
- ▼ Does it smell swampy?

## Blue-green algae can:

- ▼ Irritate skin, eyes and nasal passages and make you sick.
- ▼ Poison your pets or livestock – animals have died from it.

If you or your pets have come in contact with blue-green algae, wash thoroughly. Think you or animals are sick from it? Call a doctor or veterinarian immediately.



## When in doubt, best keep out!

For Indiana specific information see [www.algae.in.gov](http://www.algae.in.gov); or call (317)233-7181 or (877)650-0033.  
This poster prepared by the Minnesota Interagency Work Group on Blue-Green Algae.