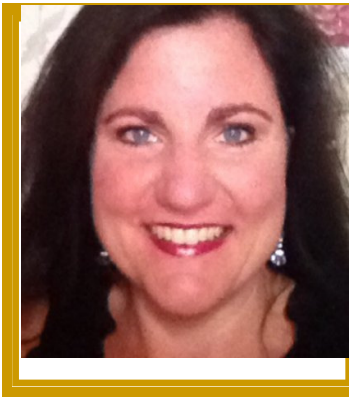




*Indiana State Department of Health  
Division of Maternal and Child Health - Genomics and  
Newborn Screening  
Early Hearing Detection and Intervention (EHDI Program)*

## **EHDI—Staff Highlight**



**SUZANNE FOLEY, M.S., CCC-A  
LEAD REGIONAL AUDIOLOGY CONSULTANT  
EARLY HEARING DETECTION AND INTERVENTION PROGRAM**

Suzanne Foley is the Lead Regional Audiology Consultant for EHDI. In addition to being the EHDI audiology consultant in the central and north central Indiana regions, she assists the Director and Follow-Up coordinator with EHDI projects and supports the efforts of the six other regional audiology consultants in the state. Suzanne has been in private practice in Indianapolis for more than 20 years providing a variety of audiology services to children and adults and supervising audiology doctoral students as externs in her practice. She received her degrees from Purdue University. She enjoys spending time with her family, her husband and three children.

EHDI Legislation	2
Ameri Acad of Audiology National Audiology Awareness Month	2
Improving communication with families regarding	3
Indiana EHDI Staff	4

## **Guide by Your Side**

**Guide by Your Side (GBYS)** is a Hands and Voices Program for Parent to Parent support. The Program embodies strong values of direct peer connections and networking. It promotes self-efficacy and hinders isolation by exploring the common bond, shared experiences, challenges, wisdom and insight. Indiana has Guide by Your Side Parent Guides who work with more than 200 families to provide family support in many ways. For more information, please contact Lisa Condes at [lcondes@isdh.in.gov](mailto:lcondes@isdh.in.gov) or at 317.233.7686 or 855.875.5193



Indiana State  
Department of Health  
Early Hearing Detection  
and Intervention Program

## **UPCOMING EVENTS**

October 24-25

Purdue University Crossroads Conference  
<https://www.conf.purdue.edu/Crossroads/register.html>

April 5-8, 2017

American Academy of Audiology National Conference-in  
INDIANAPOLIS  
[www.audiology.org/conferences/audiologynow](http://www.audiology.org/conferences/audiologynow)

## EHDl Legislation

Dear Colleagues,

I'd like to take this opportunity to provide some information regarding EHDl, Federal Privacy Rules and your organization. We all understand the critical importance of protecting the Protected Health Information (PHI) of the children and families we serve.

EHDl has been asked recently by several entities if a release of information is needed from a family, or if they are *allowed* to share hearing screening or diagnostic evaluation data. The answer is that no release of information is needed and not only are facilities/professionals allowed to share, we are *required* to share with EHDl.

### **Federal:**

Pursuant to 45 CFR 164.512(b) of the Privacy Rule, covered entities (such as birthing facilities and audiologists) may disclose, without individual authorization, PHI to public health authorities

<http://www.hhs.gov/hipaa/for-professionals/privacy/guidance/disclosures-public-health-activities/index.html>

### **State:**

410 IAC 3-3-7 Follow-up of positive results, recommendations, Authority: IC 16-19-3-4; IC 16-41-17-9, Affected: IC 16-41-17

All physicians and audiologists making an initial diagnosis of a treatable disorder for which testing is required under IC 16-41-17 shall report such diagnosis and the information necessary for follow-up to the department. The reporting is mandatory for physicians and audiologists making the initial diagnosis and should be reported in the format and media approved by the department. Physicians and audiologists caring for Indiana newborns, infants, or children who have been diagnosed outside the state of Indiana with a disorder for which testing is required under IC 16-41-17 shall report in a similar manner.

[http://www.in.gov/legislative/iac/iac\\_title?iact=410&iaca=3](http://www.in.gov/legislative/iac/iac_title?iact=410&iaca=3)

I sincerely hope that this information is useful to each of you. If you ever have any questions, please do not hesitate to contact me.

Most respectfully,

*Rebekah*

REBEKAH F. CUNNINGHAM, Ph.D.

*Director*

*Early Hearing Detection & Intervention (EHDl) Program  
Indiana State Department of Health*

October is ***National Audiology Awareness Month and National Protect Your Hearing Month***

Check out these resources to promote public awareness! Great activities for kids!

[www.audiology.org/publications-resources/consumer-information/october](http://www.audiology.org/publications-resources/consumer-information/october)

Want the ability to enter  
DAE forms electronically?

Gain access to the EHDl Alert  
Response System (EARS) by emailing Dr. Alyssa Rex  
([arex@isdh.in.gov](mailto:arex@isdh.in.gov)) for further instructions.

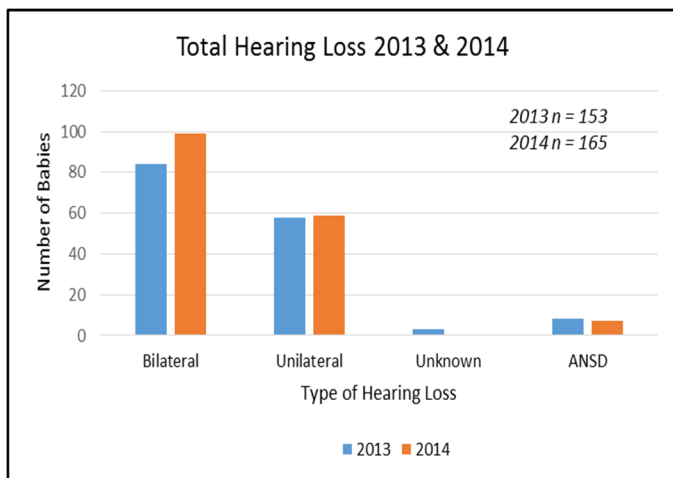
## HOSPITAL STAFF: HOW TO IMPROVE COMMUNICATION WITH PARENTS REGARDING HEARING SCREENING RESULTS

### Do:

- Use the term “refer” or “not pass” to indicate the results to parents
- Try saying: “Do not stress about this right now; wait until you have the results of the hearing test- this is only a screening.”
- If the family asks further questions, respond with “This is a screening only. It does not tell us any more information, but you will get that information at the follow up hearing test.”

### Don't:

- Use the word “fail” as it gives a negative connotation to the results and can cause panic in parents receiving the news
- Say that the result is “likely fluid in the ear” or that the “equipment is faulty”.
- Minimize the importance of referring in one ear only. In Indiana, 35% of the babies identified with hearing loss after newborn hearing screening had hearing loss only in one ear. It is important to encourage families to pursue appropriate follow up even if only one ear does not pass



### 2013-2014 Findings: Unilateral Hearing Loss



### Audiologists:

Did you know that the AAA  
(American Academy of Audiology)  
National Conference is April 5-7,  
2017 in Indianapolis?

Mark your calendars now!  
[www.audiology.org/conferences/audiologynow](http://www.audiology.org/conferences/audiologynow)

Indiana State Department of Health  
 Division of Maternal and Child Health  
 - Genomics and Newborn Screening  
 Early Hearing Detection and  
 Intervention (EHDl Program)

2 North Meridian  
 Indianapolis, Indiana 46204

### IMPORTANT LINKS

**Joint Commission on Infant Hearing**  
[www.jcih.org](http://www.jcih.org)

**National Center for Hearing  
 Assessment and Management**  
<http://www.infantheating.org>

**For more information:**  
**[www.hearing.in.gov](http://www.hearing.in.gov)**



**Indiana State  
 Department of Health**  
 Early Hearing Detection  
 and Intervention Program

### Indiana EHDl Staff



**Director:**  
 Rebekah F. Cunningham, Ph.D.  
 Phone: 317.232-0972  
 Fax: 317.925.2888  
 E-mail: [RCunningham@isdh.in.gov](mailto:RCunningham@isdh.in.gov)

**Guide By Your Side Outreach Coord:**  
 Mariana Barquet

**Regional Consultants:**  
 Suzanne Foley, M.S.  
 Loreen Zimmerman, Au.D.  
 Alison Schortgen, Au.D.  
 Hala Elsisy, Ph.D.  
 Debbie Force, M.A.  
 Nancy Nelson, Au.D.  
 Mandi Crishon, Au.D.



**Follow-Up Coordinator:**  
 Alyssa K. Rex, Au.D.  
 Phone: 317.232-0972  
 Fax: 317.925.2888  
 E-mail: [ARex@isdh.in.gov](mailto:ARex@isdh.in.gov)

**Guide By Your Side Parent Guides:**

**Parent Consultants:** Julie Swaim and Lisa Wolfe

Stacy Allgeier	Toni Harpster
Sandra Lerman	Sara MacGregor
Joanna Sichts	Jamie Donsbach
Jenny Scheiderer	Erin Fallat
Amy Weilbaker	
Shireen Hafeez	

**Guide By Your Side Coordinator:**  
 Lisa Condes, M.S.