



Indiana State
Department of Health
An Equal Opportunity Employer

Michael R. Pence
Governor

Jerome M. Adams, MD, MPH
State Health Commissioner

DATE: April 30, 2015

TO: All Local Health Departments
Attn: Chief Food Inspection Officer

FROM: *Laurie Kidwell*
Laurie Kidwell, RRT Supervisor
Food Protection Program

SUBJECT: Golden Krust Patties - RECALL [Food]

AFFECTED PRODUCT: Beef and chicken products

SUMMARY: Class I Recall; The recall has been initiated because the products contain egg, a known allergen, which is not declared on the product label.

The beef and chicken products were produced on various dates from January 24, 2014 through February 26, 2015. The following products are subject to recall:

- 8-lb. cases containing 2-count packages of "Golden Krust Jamaican Style Spicy Beef Patties."
- 8-lb. cases containing 2-count packages of "Golden Krust Jamaican Style Mild Beef Patties."
- 8-lb. cases containing 2-count packages of "Golden Krust Jamaican Style Chicken Patties."
- 12-lb. cases containing 3-count packages of "Golden Krust Jamaican Style Spicy Beef Patties."
- 12-lb. cases containing 3-count packages of "Golden Krust Jamaican Style Mild Beef Patties."
- 12-lb. cases containing 3-count packages of "Golden Krust Jamaican Style Chicken Patties."
- 15-lb. cases containing "Golden Krust Jamaican Style Spicy Beef Patties."
- 15-lb. cases containing "Golden Krust Jamaican Style Mild Beef Patties."
- 15-lb. cases containing "Golden Krust Jamaican Style Chicken."
- 15-lb. cases containing 9-count packages of "Golden Krust Jamaican Style Hot Beef Patties."
- 15-lb. cases containing 9-count packages of "Golden Krust Jamaican Style Chicken Patties."
- 15-lb. cases containing 9-count packages of "Golden Krust Jamaican Style Mild Beef Patties."
- 8.5-lb cases containing 24-count packages of "Golden Krust Jamaican Style Spicy Beef Patties."
- 8.5-lb cases containing 24- count packages of "Golden Krust Jamaican Style Chicken."
- 40-lb cases containing 10-count packages of "Golden Krust Jamaican Style Spicy Beef Patties."
- 15-lb cases containing "Golden Krust Cheezee Beef Patty."
- 15-lb cases containing "Golden Krust Jerk Chicken Patty."

The products subject to recall bear the establishment number "EST. 18781 and P-18781" inside the USDA mark of inspection and have an expiration date between January 24, 2015 through February 26, 2016.

These items produced were shipped to distributors, retailers, and consumers nationwide.

SUGGESTED

ACTION:

Recommend notification of affected parties via phone, fax, or e-mail. Consumers with questions about the recall can contact Herma Hawthorne, Director of Compliance, at (855) 565-0561. Media with questions about the recall can contact Latalya Morrison, Marketing and Public Relations Manager, at (718) 655-7878 ext. 7148. Furthermore, if any recalled products are found, notify this office at 317-233-8475.

Recall -- Firm Press Release

FDA posts press releases and other notices of recalls and market withdrawals from the firms involved as a service to consumers, the media, and other interested parties. FDA does not endorse either the product or the company.

Golden Krust Patties Recalls Beef And Chicken Products Due To Misbranding And Undeclared Allergens

Class I Recall 071-2015
Health Risk: High Apr 29, 2015

Congressional and Public Affairs
Whitney Joy
(202) 720-9113

WASHINGTON, April 29, 2015 – Golden Krust Patties, a Bronx, N.Y. establishment, is recalling approximately 9,073,384 pounds of beef and chicken products due to misbranding and undeclared allergens, the U.S. Department of Agriculture’s Food Safety and Inspection Service (FSIS) announced today. The products contain egg, a known allergen, which is not declared on the product label.

The beef and chicken products were produced on various dates from January 24, 2014 through February 26, 2015. The following products are subject to recall: [[Labels](#)]

- 8-lb. cases containing 2-count packages of “Golden Krust Jamaican Style Spicy Beef Patties.”
- 8-lb. cases containing 2-count packages of “Golden Krust Jamaican Style Mild Beef Patties.”
- 8-lb. cases containing 2-count packages of “Golden Krust Jamaican Style Chicken Patties.”
- 12-lb. cases containing 3-count packages of “Golden Krust Jamaican Style Spicy Beef Patties.”
- 12-lb. cases containing 3-count packages of “Golden Krust Jamaican Style Mild Beef Patties.”
- 12-lb. cases containing 3-count packages of “Golden Krust Jamaican Style Chicken Patties.”
- 15-lb. cases containing “Golden Krust Jamaican Style Spicy Beef Patties.”
- 15-lb. cases containing “Golden Krust Jamaican Style Mild Beef Patties.”
- 15-lb. cases containing “Golden Krust Jamaican Style Chicken.”
- 15-lb. cases containing 9-count packages of “Golden Krust Jamaican Style Hot Beef Patties.”
- 15-lb. cases containing 9-count packages of “Golden Krust Jamaican Style Chicken Patties.”
- 15-lb. cases containing 9-count packages of “Golden Krust Jamaican Style Mild Beef Patties.”
- 8.5-lb cases containing 24-count packages of “Golden Krust Jamaican Style Spicy Beef Patties.”
- 8.5-lb cases containing 24- count packages of “Golden Krust Jamaican Style Chicken.”
- 40-lb cases containing 10-count packages of “Golden Krust Jamaican Style Spicy Beef Patties.”
- 15-lb cases containing “Golden Krust Cheezee Beef Patty.”
- 15-lb cases containing “Golden Krust Jerk Chicken Patty.”

The products subject to recall bear the establishment number “EST. 18781 and P-18781” inside the USDA mark of inspection and have an expiration date between January 24, 2015 through

February 26, 2016. These items produced were shipped to distributors, retailers, and consumers nationwide.

The problem was discovered during a routine label review by FSIS personnel.

FSIS and the company have received no reports of adverse allergic reactions due to consumption of these products. Anyone concerned about an injury or illness should contact a healthcare provider.

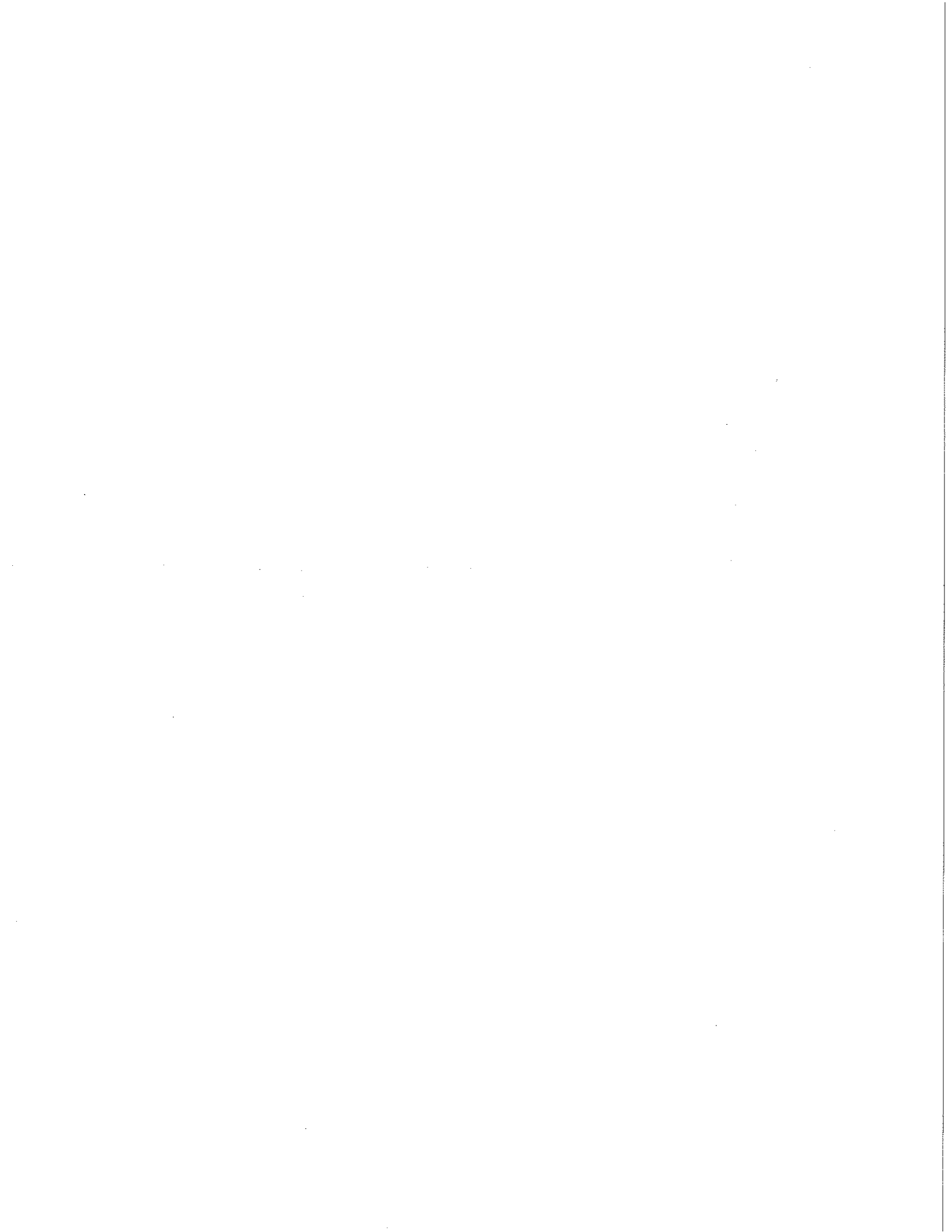
FSIS routinely conducts recall effectiveness checks to verify recalling firms notify their customers of the recall and that steps are taken to make certain that the product is no longer available to consumers. When available, the retail distribution list(s) will be posted on the FSIS website at www.fsis.usda.gov/recalls.

Consumers with questions about the recall can contact Herma Hawthorne, Director of Compliance, at (855) 565-0561. Media with questions about the recall can contact Latalya Morrison, Marketing and Public Relations Manager, at (718) 655-7878 ext. 7148.

Consumers with food safety questions can "Ask Karen," the FSIS virtual representative available 24 hours a day at AskKaren.gov or via smartphone at m.askkaren.gov. The toll-free USDA Meat and Poultry Hotline 1-888-MPHotline (1-888-674-6854) is available in English and Spanish and can be reached from 10 a.m. to 4 p.m. (Eastern Time) Monday through Friday. Recorded food safety messages are available 24 hours a day. The online Electronic Consumer Complaint Monitoring System can be accessed 24 hours a day at: <http://www.fsis.usda.gov/reportproblem>.

USDA Recall Classifications	
Class I	This is a health hazard situation where there is a reasonable probability that the use of the product will cause serious, adverse health consequences or death.
Class II	This is a health hazard situation where there is a remote probability of adverse health consequences from the use of the product.
Class III	This is a situation where the use of the product will not cause adverse health consequences.

Last Modified Apr 29, 2015





JAMAICAN STYLE SPICY BEEF PATTIES
MICROWAVABLE

KEEP FROZEN

MICROWAVE
2:00
MINUTES



U.S.
INSPECTED
AND PASSED BY
DEPARTMENT OF
AGRICULTURE
EST. 18781

INDIVIDUALLY
WRAPPED

2
SPICY
TURNOVERS
WITH
SPICY BEEF
FILLING &
FLAXY CRUST



- FOR LUNCH
- AFTER SCHOOL
- EVENING SNACK

JAMAICAN STYLE SPICY BEEF PATTIES
NET WT. 10 OZ. (284g) PESO NETO 10 OZ. (284g) PICANTE (EMPAÑADA DE RES)

**JAMAICAN STYLE
SPICY BEEF PATTIES**
MICROWAVABLE



JAMAICAN STYLE SPICY BEEF PATTIES
MICROWAVABLE



JAMAICAN STYLE MILD BEEF PATTIES

KEEP FROZEN

MICROWAVE
2.00
MINUTES



2
MIN
TURNOVERS
WITH BEEF
FILLING &
FLAKY CRUST



• FIVE LUNCH
• AFTER SCHOOL
• EVENING SNACK

JAMAICAN STYLE MILD BEEF PATTIES

NET WT. 10 OZ. (284g) PESO NETO 10 OZ. (284g) LEVE (IMPANADA DE RES)

2

JAMAICAN STYLE
MILD BEEF PATTIES



JAMAICAN STYLE MILD BEEF PATTIES



Golden Krust

JAMAICAN STYLE CHICKEN PATTIES

KEEP FROZEN

MICROWAVE READY

Golden Krust

2 PATTIES

JAMAICAN STYLE CHICKEN PATTIES

NET WT. 10 OZ. (284g) RES. PHOTO 10 OZ. (284g) LEAVE TEMPERATURE TO PREPARE

JAMAICAN STYLE CHICKEN PATTIES

Golden Krust

Golden Krust

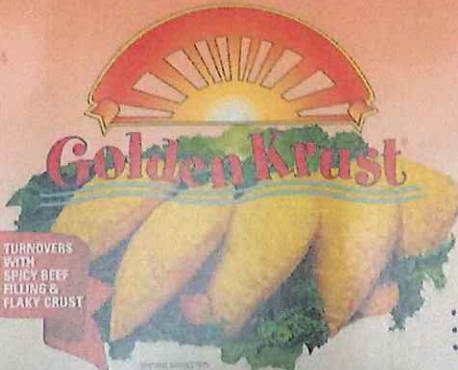
JAMAICAN STYLE CHICKEN PATTIES

KEEP FROZEN

U.S.
DEPARTMENT OF AGRICULTURE
EST. 1878

Nutrition Facts

Nutrition Facts	
Per 1 Turnover (3.75 oz)	
Total Fat	10g
Total Crust	10g
Total Beef	10g
Total Spices	10g
Total Turnovers	10g
Total Turnovers (3)	10g
Total Turnovers (15)	10g
Total Turnovers (30)	10g
Total Turnovers (45)	10g
Total Turnovers (60)	10g
Total Turnovers (75)	10g
Total Turnovers (90)	10g
Total Turnovers (105)	10g
Total Turnovers (120)	10g
Total Turnovers (135)	10g
Total Turnovers (150)	10g
Total Turnovers (165)	10g
Total Turnovers (180)	10g
Total Turnovers (195)	10g
Total Turnovers (210)	10g
Total Turnovers (225)	10g
Total Turnovers (240)	10g
Total Turnovers (255)	10g
Total Turnovers (270)	10g
Total Turnovers (285)	10g
Total Turnovers (300)	10g



3
SPICY
TURNOVERS
WITH
SPICY BEEF
FILLING &
FLAKY CRUST

- FOR LUNCH
- AFTER SCHOOL
- EVENING SNACK

JAMAICAN STYLE SPICY BEEF PATTIES

NET WT. 15 OZ. (425g) PESO NETO 15 OZ. (425g) PICANTE (EMSPANADA DE RES)



JAMAICAN STYLE SPICY BEEF PATTIES



NET WT 15 OZ



NUTRITIONAL INFORMATION	
PER SERVING (1 PATTY)	
Calories	150
Total Fat	10g
Total Crap	10g
Total Protein	10g
Total Sugar	10g
Total Fiber	10g
Total Salt	10g



JAMAICAN STYLE CHICKEN PATTIES

NET WT. 15 OZ. (425g) NET WT. 15 OZ. (425g) (EMPANADA DE POLLO)



JAMAICAN STYLE CHICKEN PATTIES



KEEP FROZEN



Nutrition Facts	
Per 100g	
Total Fat	15g
Total Crust	10g
Total Protein	10g
Total Carbohydrate	20g
Total Sodium	100mg
Total Cholesterol	50mg
Total Fiber	2g
Total Sugar	5g
Total Fat (incl. crust)	25g
Total Crust (incl. crust)	20g
Total Protein (incl. crust)	15g
Total Carbohydrate (incl. crust)	25g
Total Sodium (incl. crust)	120mg
Total Cholesterol (incl. crust)	60mg
Total Fiber (incl. crust)	3g
Total Sugar (incl. crust)	6g



JAMAICAN STYLE MILD BEEF PATTIES

NET WT. 15 OZ. (425g) 1050 NET WT. 15 OZ. (425g) LEVE 15 PAKADA DE 150g



JAMAICAN STYLE MILD BEEF PATTIES





KEEP FROZEN

MICROWAVE
2:00
MINUTES



INDIVIDUALLY WRAPPED

10 SPICY
TURNOVERS
WITH
SPICY BEEF
FILLING &
FLAKY CRUST

U.S.
DEPARTMENT OF
AGRICULTURE
NATIONAL
EST. 1971

• FOR LUNCH
• AFTER SCHOOL
• EVENING SNACK

JAMAICAN STYLE SPICY BEEF PATTIES
PICANTE (EMANADA DE RES)

NET WT. 50 OZ. (1.41kg) PESO NETO 50 OZ. (1.41kg)

JAMAICAN STYLE SPICY BEEF PATTIES
PICANTE (EMANADA DE RES)
• FOR LUNCH
• AFTER SCHOOL
• EVENING SNACK
10 SPICY TURNOVERS WITH SPICY BEEF FILLING & FLAKY CRUST
MICROWAVE 2:00 MINUTES

JAMAICAN STYLE SPICY BEEF PATTIES
PICANTE (EMANADA DE RES)
10 SPICY TURNOVERS WITH SPICY BEEF FILLING & FLAKY CRUST
MICROWAVE 2:00 MINUTES

MICROWAVE
2:00
MINUTES



INDIVIDUALLY WRAPPED

10 SPICY
TURNOVERS
WITH
SPICY BEEF
FILLING &
FLAKY CRUST

KEEP FROZEN

JAMAICAN STYLE SPICY BEEF PATTIES
PICANTE (EMANADA DE RES)

• FOR LUNCH • AFTER SCHOOL • EVENING SNACK

NET WT. 50 OZ. (1.41kg) PESO NETO 50 OZ. (1.41kg)



KEEP FROZEN



TISNDOVERS WITH SPICY BEEF FILLING & FLAKY CRUST



• FOR LUNCH
• AFTER SCHOOL
• EVENING SNACK

JAMAICAN STYLE HOT BEEF PATTIES

NET WT. 43 OZ. (1.2kg) PESO NETO 43 OZ. (1.2kg) PICANTE (EMPAÑADA DE RES)

KEEP FROZEN



TISNDOVERS WITH SPICY BEEF FILLING & FLAKY CRUST



• FOR LUNCH
• AFTER SCHOOL
• EVENING SNACK

JAMAICAN STYLE HOT BEEF PATTIES

NET WT. 43 OZ. (1.2kg) PESO NETO 43 OZ. (1.2kg) PICANTE (EMPAÑADA DE RES)

KEEP FROZEN



TISNDOVERS WITH SPICY BEEF FILLING & FLAKY CRUST



Home of the World's Best Patties!

TRY OUR OTHER JAMAICAN STYLE PATTIES!







KEEP FROZEN

U.S. #1

9 MILD
TENDER
WITH BEEF
FILLING &
FLAKY CRUST

NET WT. 4.5 OZ. (126g) PESO NETO 45 OZ. (1.3kg) LEVE (EMPANADA DE RES)

JAMAICAN STYLE MILD BEEF PATTIES

- FOR LUNCH
- AFTER SCHOOL
- EVENING SNACK

Home of the World's Best Patties!

TRY OUR OTHER JAMAICAN STYLE PATTIES



KEEP FROZEN

U.S. #1

9 MILD
TENDER
WITH BEEF
FILLING &
FLAKY CRUST

NET WT. 4.5 OZ. (126g) PESO NETO 45 OZ. (1.3kg) LEVE (EMPANADA DE RES)

JAMAICAN STYLE MILD BEEF PATTIES

- FOR LUNCH
- AFTER SCHOOL
- EVENING SNACK

KEEP FROZEN

U.S. #1

9 MILD
TENDER
WITH BEEF
FILLING &
FLAKY CRUST

- FOR LUNCH
- AFTER SCHOOL

KEEP FROZEN

KEEP FROZEN



JAMAICAN STYLE CHICKEN PATTIES

NET WT. 5 OZ. (142g) PESO NETO 5 OZ. (142g)

LEVE (EMPANADA DE POLLO)



IMPORTANT
DO NOT THAW FOOD
IN MICROWAVE

Microwaveable Instructions

Cut open microwaveable package along the length of dotted line only (upper left hand corner) for ventilation. Leave patty inside the package for a minute in microwave. Set microwave on HIGH and set time for 2 minutes. Remove patty from microwave.

CAUTION: PATTY WILL BE HOT. LET STAND FOR 2 MINUTES BEFORE EATING.

Commercial Microwave Ovens

1-1.5 minutes (1200-1500 watt)

Household Microwave Ovens

2 minutes (600-800 watt)

When microwaving 2 patties, set time for 3 minutes. (Individual ovens heat differently, cooking time may vary).

Microwondas Instrucciones

Cortar y abrir el paquete solamente a través de la línea punteada por la esquina superior izquierda para ventilación. Dejar la empanada adentro del paquete por un minuto en cocina de microondas. Colocar la empanada contra el microwondas. Ajustar el microwondas en potencia ALTA y fijar el tiempo en 2 minutos. Retirar la empanada del microwondas.

PRECAUCION: LA EMPANADA ESTARA CALIENTE. Dejar reposar durante 2 minutos antes de comer.

Microwondas Comerciales

1-1.5 minutos (1200-1500 watt)

Microwondas Casero

2 minutos (600-800 watt)

Cuando calienta 2 empanadas en el microwondas, fijar el tiempo en 3 minutos.

(Debido a que los tiempos de microwondas son diferentes, los tiempos de cocinado pueden variar.)

KEEP FROZEN

MADE IN USA



Nutrition Facts	
Serving Size 1 PATTY (5.00 oz)	
Amount Per Serving	
% Daily Value*	
Total Fat	10g
Total Crust	1.5g
Total Protein	10g
Total Sugar	1g
Total Fat	10g
Total Crust	1.5g
Total Protein	10g
Total Sugar	1g
Total Fat	10g
Total Crust	1.5g
Total Protein	10g
Total Sugar	1g

OPEN HERE BEFORE HEATING GOLDEN KRUST CARIBBEAN BAKERY, INC. 3024 PARK AV. BRONX, NY 10462
 CALL 1-718-6K-KRUST • WWW.GOLDENKRUSTBAKERY.COM

INDIVIDUALLY WRAPPED FOR RESALE



MICROWAVE 2:00 MINUTES

KEEP FROZEN



JAMAICAN STYLE SPICY BEEF PATTIES
 PICANTE (EMPANADA DE RES)

NET WT. 5 OZ. (142g) PESO NETO 5 OZ. (142g)



IMPORTANT:
 DO NOT THAW PRIOR TO MICROWAVING

Microwaveable Instructions
 Cut open microwaveable package along the length of dotted line only (upper left hand corner) for ventilation. Leave patty inside the package for a crispy "golden crust." Place patty inside the microwave. Set microwave on HIGH and set time for 2 minutes. Remove patty from microwave.

CAUTION: PATTY WILL BE HOT. LET STAND FOR 2 MINUTES BEFORE EATING.

Commercial Microwave Ovens 1-1.5 minutes (1200-1500 watt)
 Household Microwave Ovens 2 minutes (900-900 watt)

When microwaving 2 patties, set time for 3 minutes. (Individual ovens heat differently, cooking time may vary)

Microondas Instrucciones
 Cortar y abrir el paquete solamente a lo largo de la línea punteada (en la esquina superior izquierda) para ventilación. Dejar la empanada dentro del paquete para así obtener una corteza dorada crujiente. Colocar la empanada dentro del microondas. Ajustar el microondas en potencia ALTA y fijar el tiempo en 2 minutos. Retira la empanada del microondas.

PRECAUCION: LA EMPANADA ESTARA CALIENTE. Dejar reposar durante 2 minutos antes de comer.

Microonda Comercial 1-1.5 minutos (1200-1500 watt)
 Microonda Casera 2 minutos (900-900 watt)

Quando caliente 2 empanadas en el microondas, fijar el tiempo en 3 minutos.

¡Manténgalo siempre congelado!

KEEP FROZEN



