

# INFANT MORTALITY DISPARITIES 2014

For more information on infant mortality in your area, please see the Indiana State Department of Health Mortality Report, Tables 2 and 8 (<http://www.in.gov/isdh/reports/mortality/2014/toc.htm>)

## 2010 - 2014

HOSPITAL REGION	IMR	WHITE IMR	BLACK IMR	RATIO
<b>CENTRAL</b> Brown, Hamilton, Hancock, Hendricks, Johnson, Lawrence, Marion, Monroe, Morgan, Shelby	7.2	5.3	13.1	2.5
<b>CENTRAL SOUTHWESTERN</b> Clay, Greene, Owen, Parke, Putnam, Sullivan, Vermillion, Vigo	6.8	6.6	*	*
<b>EASTERN</b> Blackford, Delaware, Grant, Henry, Howard, Jay, Madison, Randolph, Tipton	8.0	7.5	14.8	2.0
<b>MIDWESTERN</b> Cass, Fulton, Jasper, Miami, Newton, Pulaski, Starke, White	7.8	7.2	*	*
<b>NORTHEASTERN</b> Adams, Allen, DeKalb, Huntington, Kosciusko, LaGrange, Noble, Steuben, Wabash, Wells, Whitley	7.3	6.3	20.5	3.3
<b>NORTHERN</b> Elkhart, LaPorte, Marshall, St. Joseph	7.7	5.6	16.4	2.9
<b>NORTHWESTERN</b> Lake, Porter	7.4	5.7	13.1	2.3
<b>SOUTHEASTERN</b> Dearborn, Decatur, Fayette, Franklin, Ohio, Ripley, Rush, Union, Wayne	6.7	6.4	*	*
<b>SOUTHERN</b> Bartholomew, Clark, Crawford, Floyd, Harrison, Jackson, Jefferson, Jennings, Orange, Scott, Switzerland, Washington	6.6	6.2	*	*
<b>SOUTHWESTERN</b> Daviess, Dubois, Gibson, Knox, Martin, Perry, Pike, Posey, Spencer, Vanderburgh, Warrick	7.5	7.0	12.9	1.8
<b>WESTERN</b> Benton, Boone, Carroll, Clinton, Fountain, Montgomery, Tippecanoe, Warren	5.8	5.1	20.2	4.0
<b>INDIANA</b>	7.2	6.0	14.3	2.4

\*Rates have been suppressed due to unstable rates (numerator less than 20).

### WHAT IS INFANT MORTALITY?

Infant mortality is defined as the death of a baby before his or her first birthday.

The infant mortality rate (IMR) is the number of babies who die in the first year of life, per 1,000 live births.

If Indiana (7.1) had the same IMR as the U.S. (5.8), 109 more babies would have survived 2014.

### UNACCEPTABLE DISPARITIES

There is a substantial difference in how infant mortality impacts different races. Between 2010 and 2014, Black babies in Indiana were 2.4 times more likely to die in the first year of life than White babies.

- Indiana's White IMR in 2014 was 5.9 per 1,000 live births, compared to the Black IMR of 14.7 deaths per 1,000 live births.

- If Black infants had the same IMR as White infants, 92 additional Black infants would have survived in 2014.

- This disparity has been consistent for years in Indiana.

- There is a clear disparity at the national level. The U.S. White IMR in 2014 was 4.93; the same rate for Blacks was 11.05. Black babies in the U.S. are 2.2 times more likely to die before their first birthday than White babies.

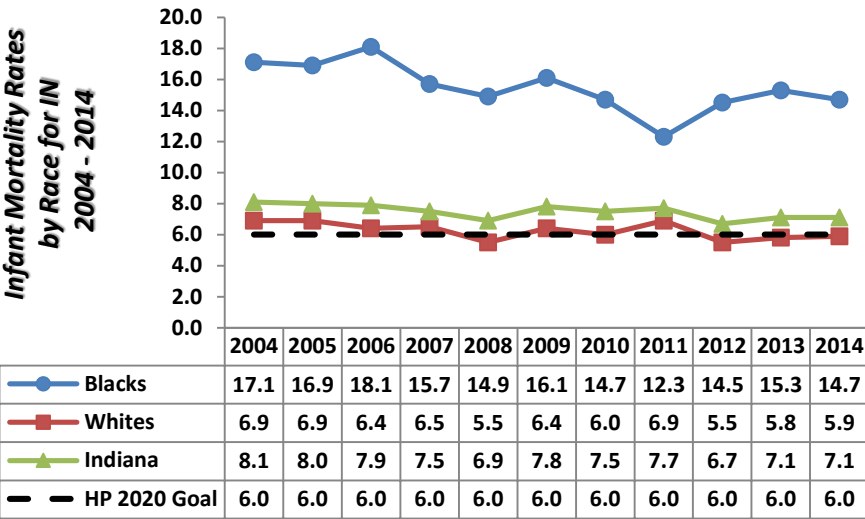
The difference in infant mortality rates across races is seen around the nation. Eliminating the disparity is a goal at the national, state and local level.

# DISPARITIES IN INDIANA

2014

INDIANA STATE DEPARTMENT OF HEALTH  
DIVISION OF MATERNAL AND CHILD HEALTH

For more information on birth outcomes in your area, please see the Indiana State Department of Health  
Natality Report, Table 32 (<http://www.in.gov/isdh/reports/natality/2014/toc.htm>)



## Causes of Infant Mortality by Race Indiana, 2014

