

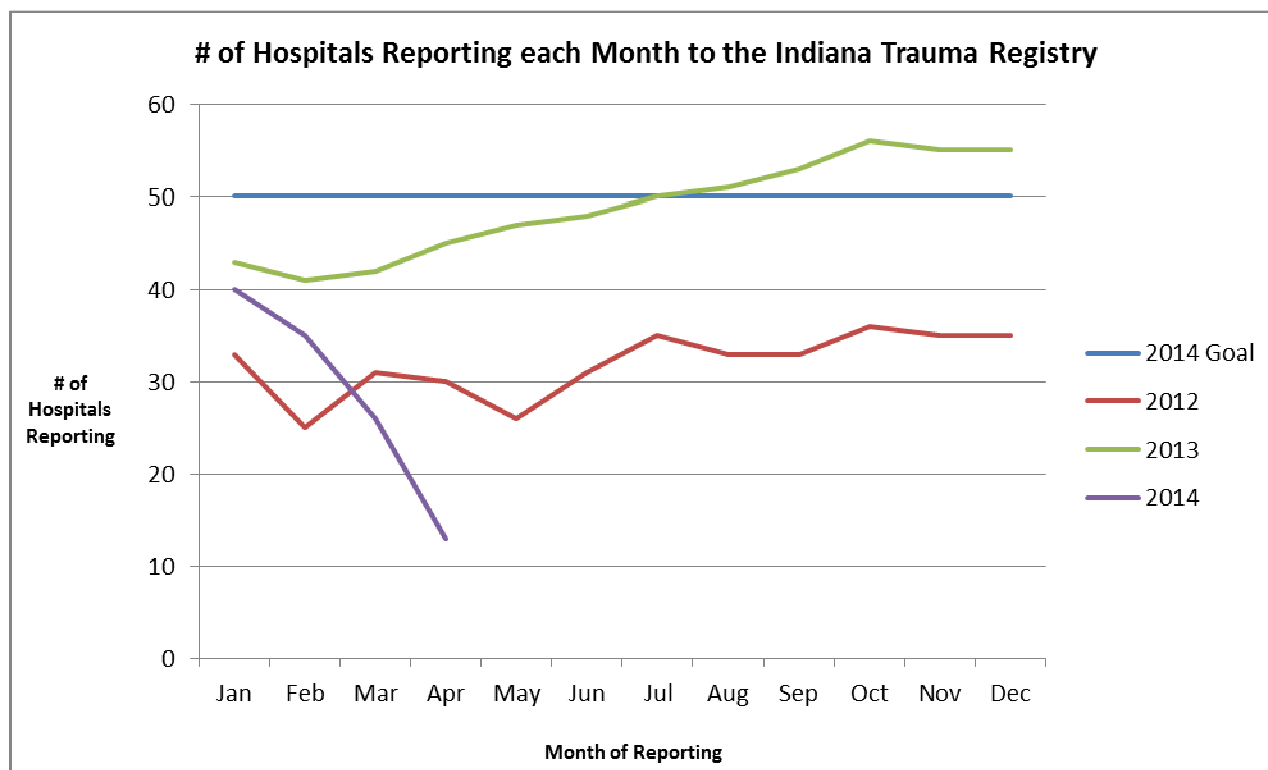
PI Subcommittee Meeting

May 7, 2014 – 10am EST to 11am EST

Agenda

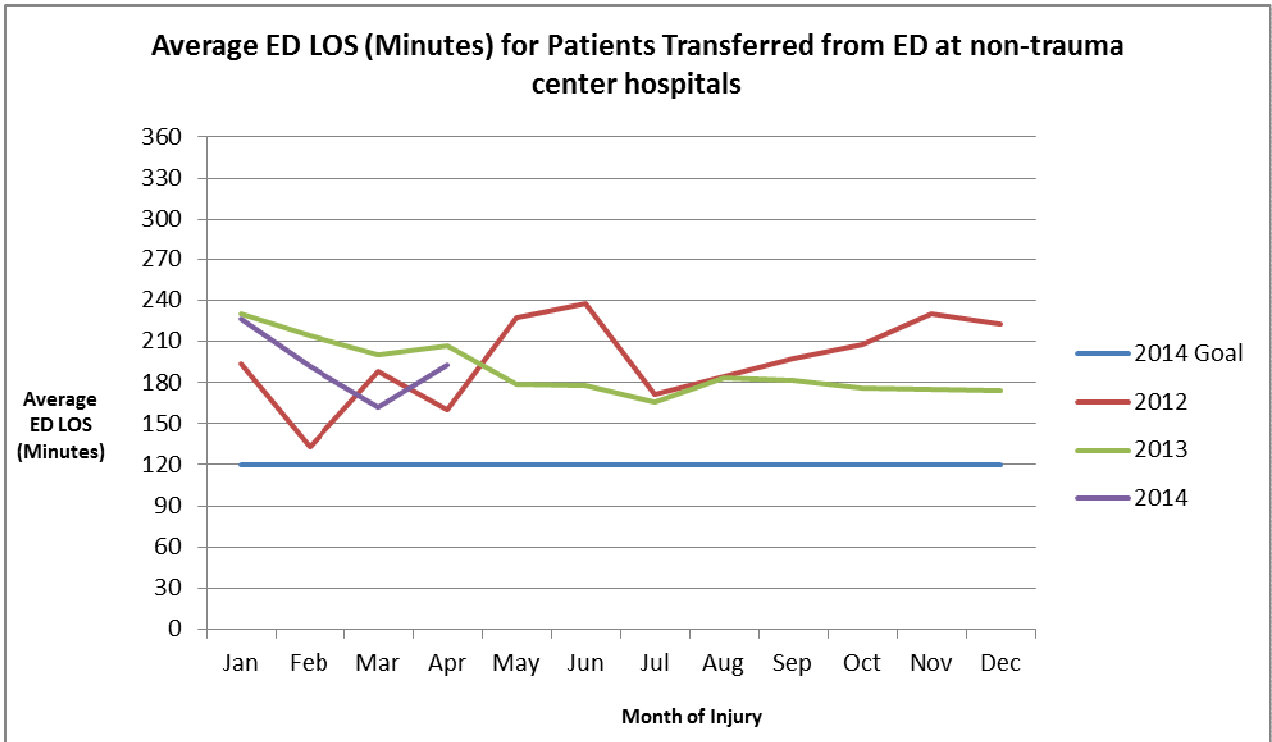
1. Welcome & Introduction
2. Update of goals for 2014 (see additional pages for updates of each goal)
 - a. Increase the number of hospitals reporting to the Indiana trauma registry
 - i. Trauma Registry Rule update – increased communication with hospitals
 - ii. Information on trauma registry training events
 - iii. Trauma Center mentor program
 - iv. Discussion of specific hospitals:
 1. Hospitals that have not responded to ISDH communication
 2. Hospitals that have attended training events, but have not started reporting data
 - b. Decrease average ED LOS at non-trauma centers
 - i. Review of transfer data sent to trauma centers (& some other facilities receiving transfer patients)
 - ii. Discussion about the transfer data sent to trauma centers:
 1. Over triage: Patients that arrive at the final hospital with no injuries
 - iii. Review of current average ED LOS
 - iv. Discussion of educational materials for non-trauma centers regarding timely transfers
 1. Other States Requiring PI for ED LOS > 2 hours (19 states surveyed – 9 states have > 2 hours as of November 2013):
 - a. Arizona – in PI Guidelines
 - b. Illinois – in State Rule
 - c. Nebraska – in PI Guidelines
 - d. New Mexico
 - e. North Dakota
 - f. South Dakota
 - g. Texas – in State Rule
 - h. Virginia
 - i. Wyoming
 2. Other States Requiring PI For ED LOS:
 - a. Minnesota: ED LOS > 1 hour
 - b. Pennsylvania: ED LOS > 3 hours
 - v. Schedule an organized meeting with RTTDC coordinators
 - c. Increase EMS run sheet collection
 - i. Review of EMS run sheet collection by hospital
3. Next Meeting (TENTATIVE): Tuesday, July 29th at 10am EST

Call-in number: 1-877-422-1931, participant code is 2792437448# (music will be heard until the moderator joins the call)



Action	Owner	Status
Letter from Dr. VanNess to non-reporting hospitals	ISDH	Complete 02/2013
2nd Letter from Dr. VanNess to non-reporting hospitals about trauma registry rule	ISDH	Complete 12/2013
Trauma registry training events around the state	ISDH	Complete 3/2014
Mentorship Program between trauma centers and non-reporting hospitals	trauma centers	In progress
IU Health - North mentorship	IU Health - Methodist	Completed 2013
St. Vincent Anderson mentorship	St. Vincent - Indy	Completed 2013
Perry County, St. Mary's – Warrick, & Terre Haute Regional mentorship	St. Mary's	Completed 2013
Deaconess Gateway mentorship	Deaconess	In progress
Elkhart General, IU Health - LaPorte, & IU Health - Starke mentorship	Memorial South Bend	In progress
Waiting on mentorship status	IU Health - Methodist	
Waiting on mentorship status	St. Vincent - Indy	
Waiting on mentorship status	St. Mary's	
Waiting on mentorship status	IU Health - Riley	

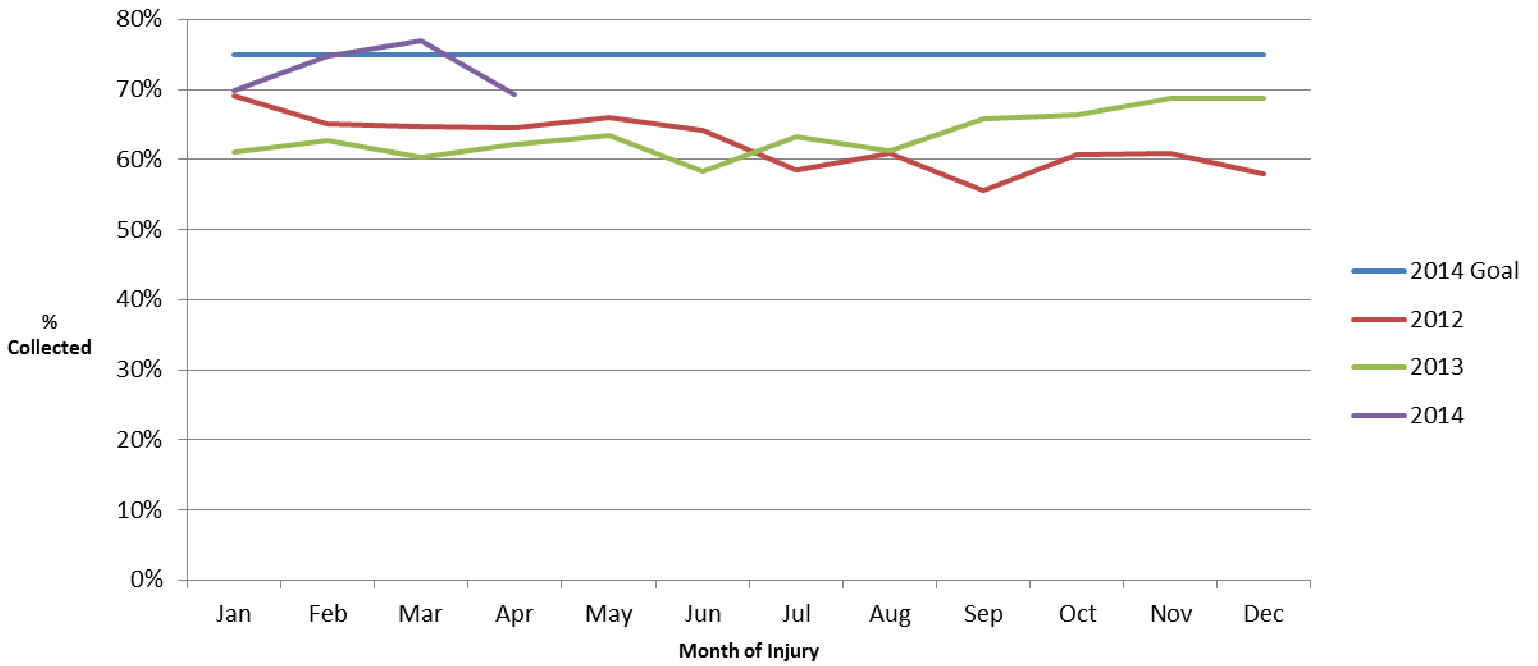
Waiting on mentorship status	Lutheran	
Waiting on mentorship status	Parkview RMC	
Waiting on mentorship status	Eskenazi Health	



Action	Owner	Status
RTTDC completion by non-trauma center hospitals	Trauma Centers	ongoing
Evaluate critical patients (transfers & non-transfers)	ISDH & trauma centers	ongoing
Develop educational material for non-trauma centers regarding timely transfers	ISDH & trauma centers	Not started

January 1, 2013 to April 30, 2014		
Total # of Patients Transferred for 2013	3146	
Measure	# of Patients	Avg ED LOS (Minutes)
Initial Hospital: Shock Index > 0.9	513	107
Initial Hospital: GCS Total Score ≤ 12	83	120
Initial Hospital: ISS ≤ 15	2623	189
Initial Hospital: ISS > 15	268	158

% of EMS Run Sheet Data Collected



Action	Owner	Status
implementation of ISDH EMS Registry	ISDH	ongoing
trauma registry rule	ISDH	in progress
EMS registry training tour	ISDH	complete
trauma centers communicating to pre-hospital providers ISDH ems registry	trauma centers	

Run Sheet Collection January 1 2013 to April 30 2014

Facility Name	% of Run Sheets Collected	% of Run Sheets Collected (Inter-Facility Transfers)
Cameron Memorial	100%	
Clark Memorial	0%	
Community Hospital of Anderson	1%	
Community Hospital of Bremen	0%	
Community Howard	0%	
Community North	0%	
Daviess Community	96%	
Deaconess Gateway	86%	100%
Deaconess	87%	21%
Dukes Memorial	100%	
Dupont	0%	
Elkhart General	82%	33%
Eskenazi	95%	15%
St. Anthony - Crown Point	94%	
St. Anthony - Michigan City	0%	
St. Elizabeth - Central	100%	100%
St. Elizabeth - East	57%	47%
St. Francis - Indy	38%	
St. Francis - Mooresville	45%	
St. Margaret - Dyer	70%	
St. Margaret - Hammond	100%	
Good Samaritan	43%	0%
Greene County General	64%	
Hendricks Regional	0%	0%
Henry County Memorial	19%	
IU Health - Arnett	63%	8%
IU Health - Ball Memorial	90%	48%
IU Health - Bedford	82%	
IU Health - Bloomington	88%	43%
IU Health - Goshen	0%	
IU Health - Methodist	90%	22%
IU Health - North	49%	
IU Health - Riley	87%	9%
IU Health - Tipton	0%	
IU Health - White Memorial	0%	
Johnson Memorial	84%	

Kosciusko Community	73%	
Lutheran	96%	53%
Major	94%	
Marion General	76%	
Memorial HHCC (Jasper)	24%	100%
Memorial South Bend	95%	63%
Methodist Northlake	79%	
Methodist Southlake	69%	78%
Monroe	20%	
Parkview Huntington	100%	
Parkview LaGrange	98%	
Parkview Noble	100%	
Parkview Randallia	100%	
Parkview RMC	97%	58%
Parkview Whitley	98%	
Perry County Memorial	22%	
Porter (Valpo)	97%	
Pulaski	67%	
Putnam County	0%	
Reid HHCS	0%	
Rush Memorial	33%	
St. Catherine (Charlestown)	0%	
St. Joseph (Mishawaka)	100%	
St. Joseph (Plymouth)	0%	
Schneck	81%	0%
Scott Memorial	0%	
St. Mary's - Evansville	74%	57%
St. Mary's - Warrick	0%	
St. Vincent - Anderson	56%	0%
St. Vincent - Clay	7%	
St. Vincent - Indy	70%	12%
St. Vincent - Williamsport	31%	
Sullivan County	78%	
Terre Haute Regional	88%	50%
Union - Clinton	48%	
Union - Terre Haute	83%	32%
Witham	7%	
Witham - Anson	0%	