

# PI Subcommittee Meeting

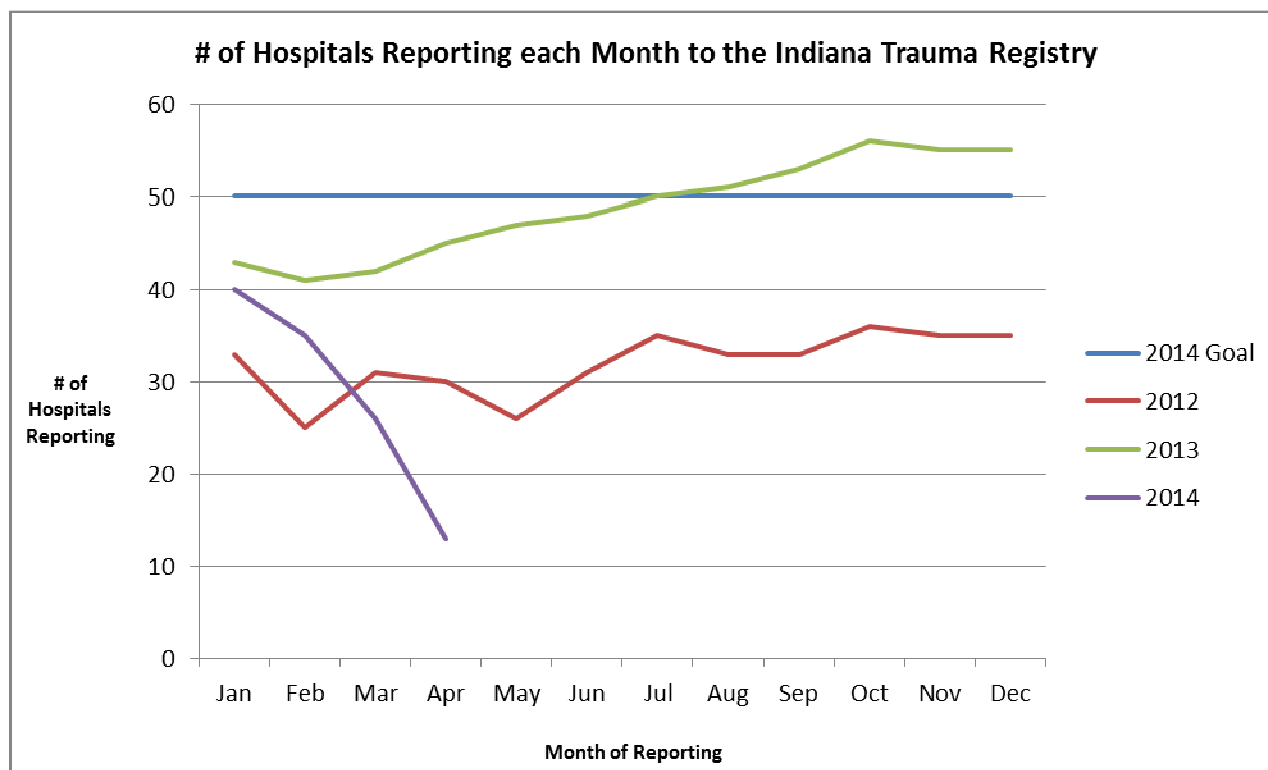
October 14, 2014 – 10am EST to 11am EST

## Agenda

1. Welcome & Introduction
2. Update of goals for 2014 (see additional pages for updates of each goal)
  - a. Increase the number of hospitals reporting to the Indiana trauma registry
    - i. Trauma Registry Rule update – increased communication with hospitals
    - ii. Information on trauma registry training events
    - iii. Trauma Center mentor program
    - iv. Discussion of specific hospitals:
      1. Hospitals that have not responded to ISDH communication
      2. Hospitals that have attended training events, but have not started reporting data
  - b. Decrease average ED LOS at non-trauma centers
    - i. Review of transfer data sent to trauma centers (& some other facilities receiving transfer patients)
    - ii. Discussion about the transfer data sent to trauma centers:
      1. Over triage: Patients that arrive at the final hospital with no injuries
    - iii. Review of current average ED LOS
    - iv. Discussion of educational materials for non-trauma centers regarding timely transfers
      1. Other States Requiring PI for ED LOS > 2 hours (19 states surveyed – 9 states have > 2 hours as of November 2013):
        - a. See May 2014 PI Subcommittee agenda for this information
      2. Education Materials for reducing ED LOS:
        - a. Florida:
          - i. regional trauma center leads education and builds relationships through:
            1. RTTDC
            2. DMEP
            3. TNCC
            4. ENPC
          - ii. Annual trauma symposium
        - iii. 8x11 Laminated information sheets with:
          1. contact numbers for easy access (transfer center phone number)
          2. Trauma Alert Criteria in Florida
          3. GCS & transfer criteria
          4. Map of trauma center & directions from the surrounding counties
        - iv. Feedback to non-trauma center on individual patient transfers on a routine basis
    - b. New Mexico:
      - i. No education material at this time, just discussions of the situation

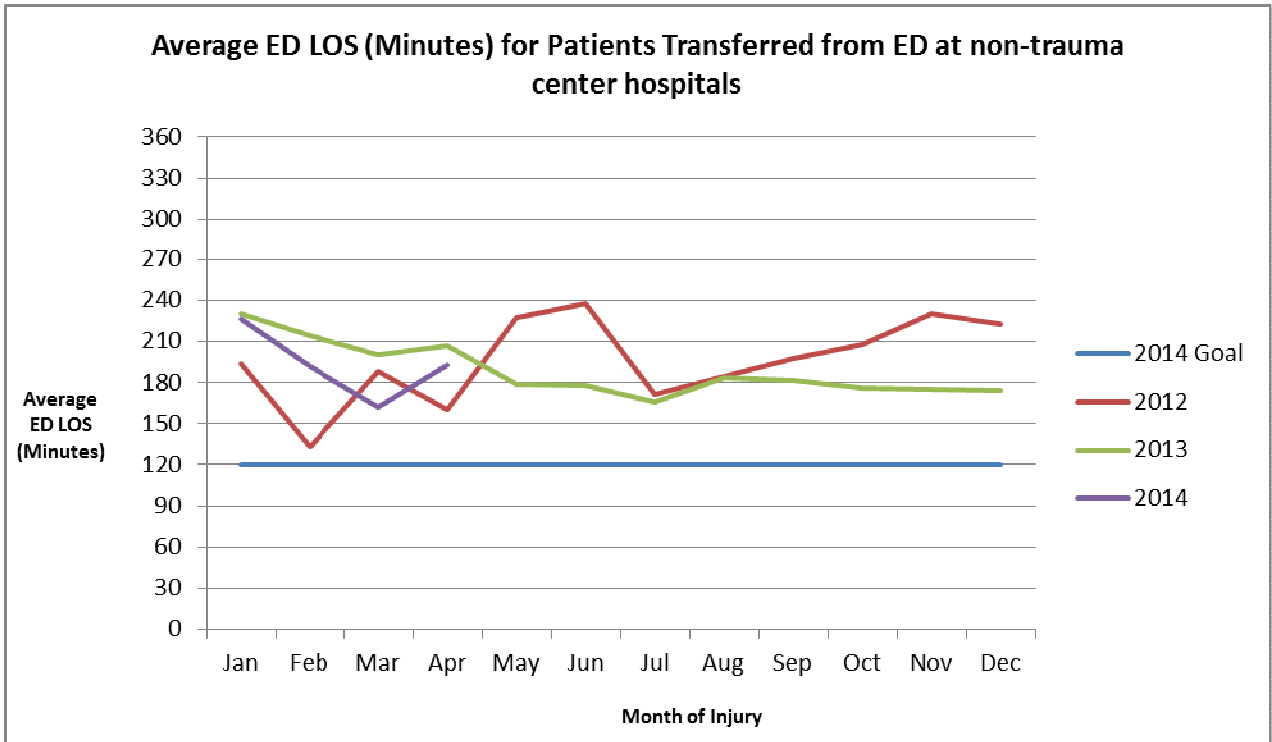
- ii. 1<sup>st</sup> RTTDC training just recently
  - c. Ohio:
    - i. Cyclical discussion phase – board does not want to educate without a formal PI process and Ohio cannot have a formal PI process due to the their state laws.
  - d. Alaska:
    - i. Utilize RTTDC or other related trauma education
    - ii. Quarterly meetings with trauma program managers and trauma registrars – QI is always discussed
    - iii. Time for decision to transfer is a QI indicator for all Level IV trauma centers
    - iv. Time for decision to transfer is a QI indicator for the majority of non-trauma centers
3. Results of organized meeting with RTTDC coordinators
- c. Increase EMS run sheet collection
    - i. Review of EMS run sheet collection by hospital
3. 2015 Metrics???
4. Next Meeting (TENTATIVE): Tuesday, July 29<sup>th</sup> at 10am EST

Call-in number: 1-877-422-1931, participant code is 2792437448# (music will be heard until the moderator joins the call)



Action	Owner	Status
Letter from Dr. VanNess to non-reporting hospitals	ISDH	Complete 02/2013
2nd Letter from Dr. VanNess to non-reporting hospitals about trauma registry rule	ISDH	Complete 12/2013
Trauma registry training events around the state	ISDH	Complete 3/2014
Mentorship Program between trauma centers and non-reporting hospitals	trauma centers	In progress
IU Health - North mentorship	IU Health - Methodist	Completed 2013
St. Vincent Anderson mentorship	St. Vincent - Indy	Completed 2013
Perry County, St. Mary's – Warrick, & Terre Haute Regional mentorship	St. Mary's	Completed 2013
Deaconess Gateway mentorship	Deaconess	In progress
Elkhart General, IU Health - LaPorte, & IU Health - Starke mentorship	Memorial South Bend	In progress
Waiting on mentorship status	IU Health - Methodist	
Waiting on mentorship status	St. Vincent - Indy	
Waiting on mentorship status	St. Mary's	
Waiting on mentorship status	IU Health - Riley	

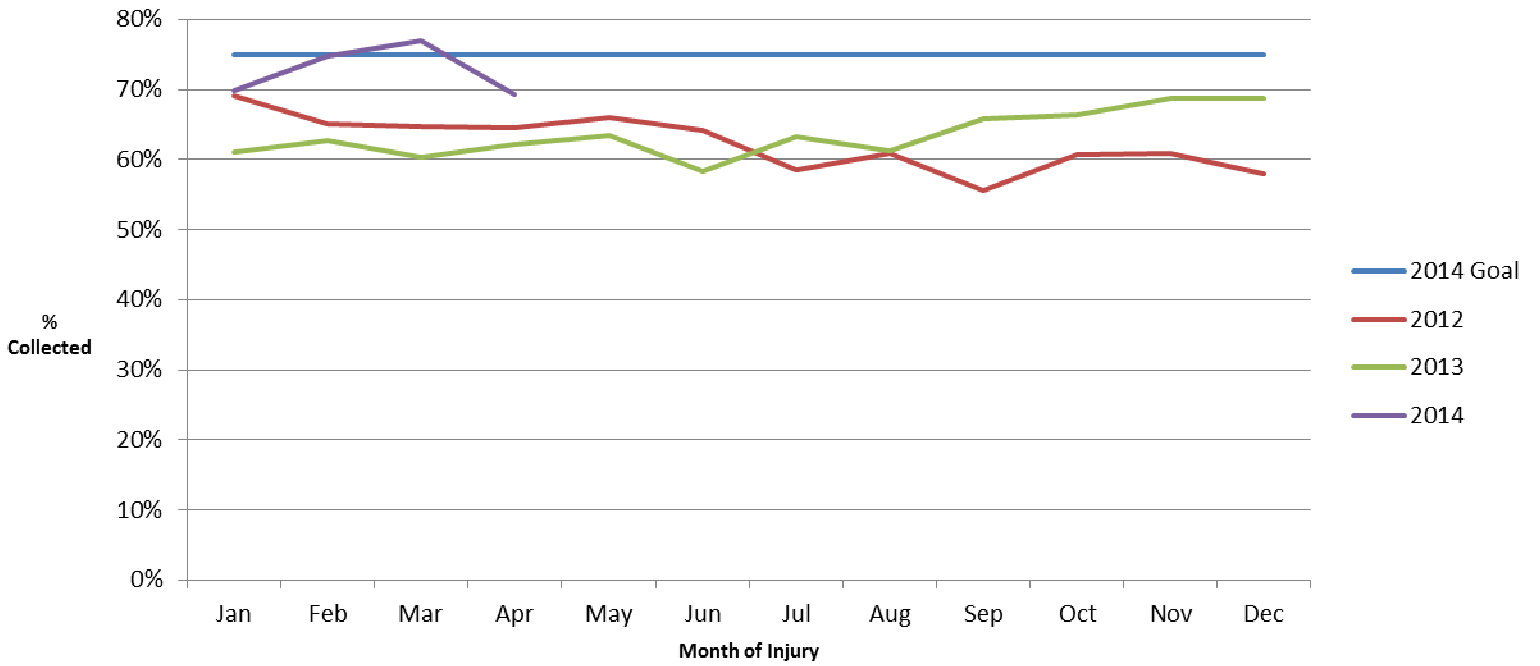
Waiting on mentorship status	Lutheran	
Waiting on mentorship status	Parkview RMC	
Waiting on mentorship status	Eskenazi Health	



Action	Owner	Status
RTTDC completion by non-trauma center hospitals	Trauma Centers	ongoing
Evaluate critical patients (transfers & non-transfers)	ISDH & trauma centers	ongoing
Develop educational material for non-trauma centers regarding timely transfers	ISDH & trauma centers	Not started

January 1, 2013 to April 30, 2014		
Total # of Patients Transferred for 2013	3146	
Measure	# of Patients	Avg ED LOS (Minutes)
Initial Hospital: Shock Index > 0.9	513	107
Initial Hospital: GCS Total Score ≤ 12	83	120
Initial Hospital: ISS ≤ 15	2623	189
Initial Hospital: ISS > 15	268	158

**% of EMS Run Sheet Data Collected**



<b>Action</b>	<b>Owner</b>	<b>Status</b>
implementation of ISDH EMS Registry	ISDH	ongoing
trauma registry rule	ISDH	in progress
EMS registry training tour	ISDH	complete
trauma centers communicating to pre-hospital providers ISDH ems registry	trauma centers	

## Run Sheet Collection January 1 2013 to April 30 2014

Facility Name	% of Run Sheets Collected	% of Run Sheets Collected (Inter-Facility Transfers)
Cameron Memorial	100%	
Clark Memorial	0%	
Community Hospital of Anderson	1%	
Community Hospital of Bremen	0%	
Community Howard	0%	
Community North	0%	
Daviess Community	96%	
Deaconess Gateway	86%	100%
Deaconess	87%	21%
Dukes Memorial	100%	
Dupont	0%	
Elkhart General	82%	33%
Eskenazi	95%	15%
St. Anthony - Crown Point	94%	
St. Anthony - Michigan City	0%	
St. Elizabeth - Central	100%	100%
St. Elizabeth - East	57%	47%
St. Francis - Indy	38%	
St. Francis - Mooresville	45%	
St. Margaret - Dyer	70%	
St. Margaret - Hammond	100%	
Good Samaritan	43%	0%
Greene County General	64%	
Hendricks Regional	0%	0%
Henry County Memorial	19%	
IU Health - Arnett	63%	8%
IU Health - Ball Memorial	90%	48%
IU Health - Bedford	82%	
IU Health - Bloomington	88%	43%
IU Health - Goshen	0%	
IU Health - Methodist	90%	22%
IU Health - North	49%	
IU Health - Riley	87%	9%
IU Health - Tipton	0%	
IU Health - White Memorial	0%	
Johnson Memorial	84%	

Kosciusko Community	73%	
Lutheran	96%	53%
Major	94%	
Marion General	76%	
Memorial HHCC (Jasper)	24%	100%
Memorial South Bend	95%	63%
Methodist Northlake	79%	
Methodist Southlake	69%	78%
Monroe	20%	
Parkview Huntington	100%	
Parkview LaGrange	98%	
Parkview Noble	100%	
Parkview Randallia	100%	
Parkview RMC	97%	58%
Parkview Whitley	98%	
Perry County Memorial	22%	
Porter (Valpo)	97%	
Pulaski	67%	
Putnam County	0%	
Reid HHCS	0%	
Rush Memorial	33%	
St. Catherine (Charlestown)	0%	
St. Joseph (Mishawaka)	100%	
St. Joseph (Plymouth)	0%	
Schneck	81%	0%
Scott Memorial	0%	
St. Mary's - Evansville	74%	57%
St. Mary's - Warrick	0%	
St. Vincent - Anderson	56%	0%
St. Vincent - Clay	7%	
St. Vincent - Indy	70%	12%
St. Vincent - Williamsport	31%	
Sullivan County	78%	
Terre Haute Regional	88%	50%
Union - Clinton	48%	
Union - Terre Haute	83%	32%
Witham	7%	
Witham - Anson	0%	