

# Indiana Trauma Care Committee Meeting

*August 21, 2015*

Indiana State Department of Health  
Division of Trauma and Injury Prevention



Indiana State  
Department of Health

Email questions to: [indianatrauma@isdh.in.gov](mailto:indianatrauma@isdh.in.gov)

# Hospitals reporting to the Indiana Trauma Registry - Quarter 1 2015

## District 1

Community Hospital - Munster

Franciscan St. Anthony – Crown  
Point

Franciscan St. Anthony –  
Michigan City

Franciscan St. Margaret –Dyer

Franciscan St. Margaret -  
Hammond

IU Health – La Porte

## **Jasper County**

Methodist Hospital Northlake

Methodist Hospital Southlake

Portage Hospital

Porter Regional Hospital  
(Valparaiso)

Email questions to: [indianatrauma@isdh.in.gov](mailto:indianatrauma@isdh.in.gov)

# Hospitals reporting to the Indiana Trauma Registry - Quarter 1 2015

## District 2

Community Hospital of Bremen

Elkhart General Hospital

## **IU Health – Goshen**

IU Health – Starke Hospital

Kosciusko Community Hospital

Memorial Hospital South Bend

Pulaski Memorial Hospital

St. Catherine Regional – East  
Chicago

St. Joseph Regional Medical  
Center (Mishawaka)

St. Joseph Regional Medical  
Center (Plymouth)

Woodlawn Hospital

Email questions to: [indianatrauma@isdh.in.gov](mailto:indianatrauma@isdh.in.gov)

# Hospitals reporting to the Indiana Trauma Registry - Quarter 1 2015

## District 3

Cameron Memorial Community  
Hospital

DeKalb Health

Dukes Memorial Hospital

Dupont Hospital

**Lutheran Hospital of Indiana**

Parkview Huntington Hospital

Parkview LaGrange Hospital

Parkview Noble Hospital

Parkview Randallia

Parkview Regional Medical Center

Parkview Whitley Hospital

## District 4

Franciscan St. Elizabeth -  
Crawfordsville

**Franciscan St. Elizabeth –  
Lafayette Central**

Franciscan St. Elizabeth –  
Lafayette East

IU Health – Arnett Hospital

IU Health – White Memorial  
Memorial Hospital (Logansport)

**St. Vincent Frankfort**

St. Vincent Williamsport Hospital

Email questions to: [indianatrauma@isdh.in.gov](mailto:indianatrauma@isdh.in.gov)



# Hospitals reporting to the Indiana Trauma Registry - Quarter 1 2015

## District 5

Community East Health Network

Community Hospital

Community North health Network

Community Hospital

Community South health Network

Community Hospital

Eskenazi Health

Franciscan St. Francis Health –

Indianapolis

Franciscan St. Francis Health –

Mooresville

**Hancock Regional Hospital**

Hendricks Regional Health

IU Health – Methodist Hospital

IU Health – Morgan Hospital

IU Health – North Hospital

IU Health – Riley for Children

**IU Health – Saxony Hospital**

Johnson Memorial Hospital

Major Hospital

Riverview Hospital

St. Vincent - Indianapolis

Witham Health Services

Witham Health Services at

Anson

Email questions to: [indianatrauma@isdh.in.gov](mailto:indianatrauma@isdh.in.gov)

# Hospitals reporting to the Indiana Trauma Registry - Quarter 1 2015

## District 6

Community Hospital of Anderson  
& Madison Co.

Community Howard Regional  
Health

Fayette Regional Health System

Henry County Memorial Hospital  
IU Health – Ball Memorial  
Hospital

IU Health – Blackford Hospital

IU Health – Tipton Hospital

Jay County Hospital

Marion General Hospital

Reid Hospital and Health Care Services

Rush Memorial Hospital

St. Vincent Anderson Regional Hospital

St. Vincent Kokomo

St. Vincent Mercy Hospital

Email questions to: [indianatrauma@isdh.in.gov](mailto:indianatrauma@isdh.in.gov)

# Hospitals reporting to the Indiana Trauma Registry - Quarter 1 2015

## District 7

Greene County General Hospital

Putnam County Hospital

St. Vincent Clay Hospital

Sullivan County Community  
Hospital

Terre Haute Regional Hospital

Union Hospital (Terre Haute)

Union Hospital Clinton

Email questions to: [indianatrauma@isdh.in.gov](mailto:indianatrauma@isdh.in.gov)

# Hospitals reporting to the Indiana Trauma Registry - Quarter 1 2015

## District 8

Columbus Regional Hospital  
IU Health – Bedford Hospital  
IU Health – Bloomington Hospital  
IU Health – Paoli Hospital  
Monroe Hospital  
Schneck Medical Center  
St. Vincent Salem Hospital

## District 9

Clark Memorial Hospital  
**Dearborn County Hospital**  
**Decatur County Memorial  
Hospital**  
Floyd Memorial Hospital and  
Health Services  
King's Daughters' Health  
Margaret Mary Community  
Hospital  
Scott County Memorial Hospital

Email questions to: [indianatrauma@isdh.in.gov](mailto:indianatrauma@isdh.in.gov)

# Hospitals reporting to the Indiana Trauma Registry - Quarter 1 2015

## District 10

Daviess Community Hospital

Deaconess Hospital

Deaconess Gateway Hospital

**Gibson General**

Good Samaritan Hospital

Memorial Hospital & Health Care Center

Perry County Memorial Hospital

St. Mary's Medical Center of Evansville

St. Mary's Warrick Hospital

Email questions to: [indianatrauma@isdh.in.gov](mailto:indianatrauma@isdh.in.gov)



# Summary of Hospitals Reporting Status- Q1 2015

## New to Reporting / Started Reporting Again

- Decatur County Memorial Hospital
- IU Health – Saxony Hospital
- St. Vincent Frankfort Hospital
- St. Vincent Kokomo

## Dropped off

- Community Howard Regional Health
- Dearborn County Hospital
- Fayette Regional Health
- Hancock Regional Hospital
- Lutheran Hospital of Indiana

Email questions to: [indianatrauma@isdh.in.gov](mailto:indianatrauma@isdh.in.gov)

# Quarter 1 2015 Statewide Report

- 7,050 incidents
- January 1, 2015 – March 31, 2015
- 94 total hospitals reporting
  - 8 Level I and II Trauma Centers
  - 10 Level III Trauma Centers
  - 76 Non-Trauma Hospitals

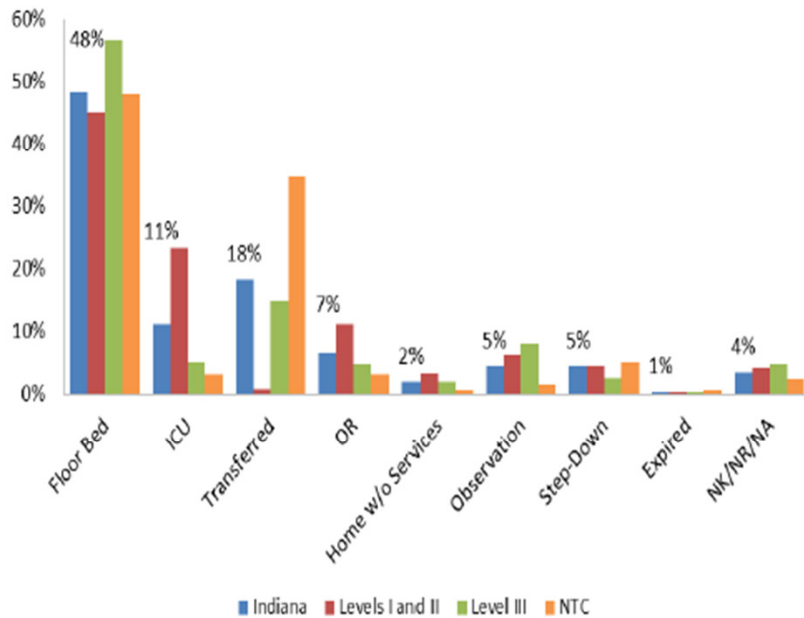


Indiana State  
Department of Health

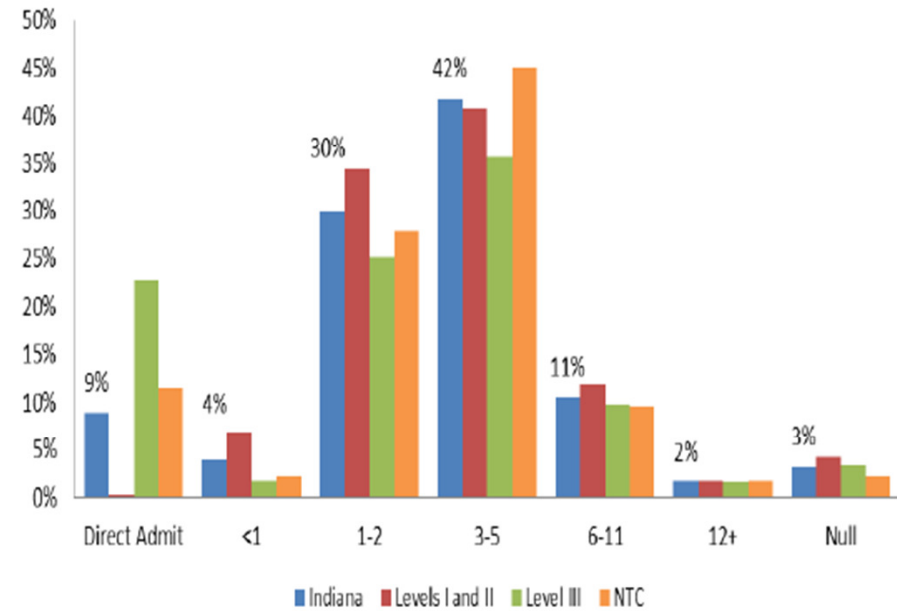
Email questions to: [indianatrauma@isdh.in.gov](mailto:indianatrauma@isdh.in.gov)

# ED: Disposition / Length of Stay - Page 2

## ED Disposition by Percentage



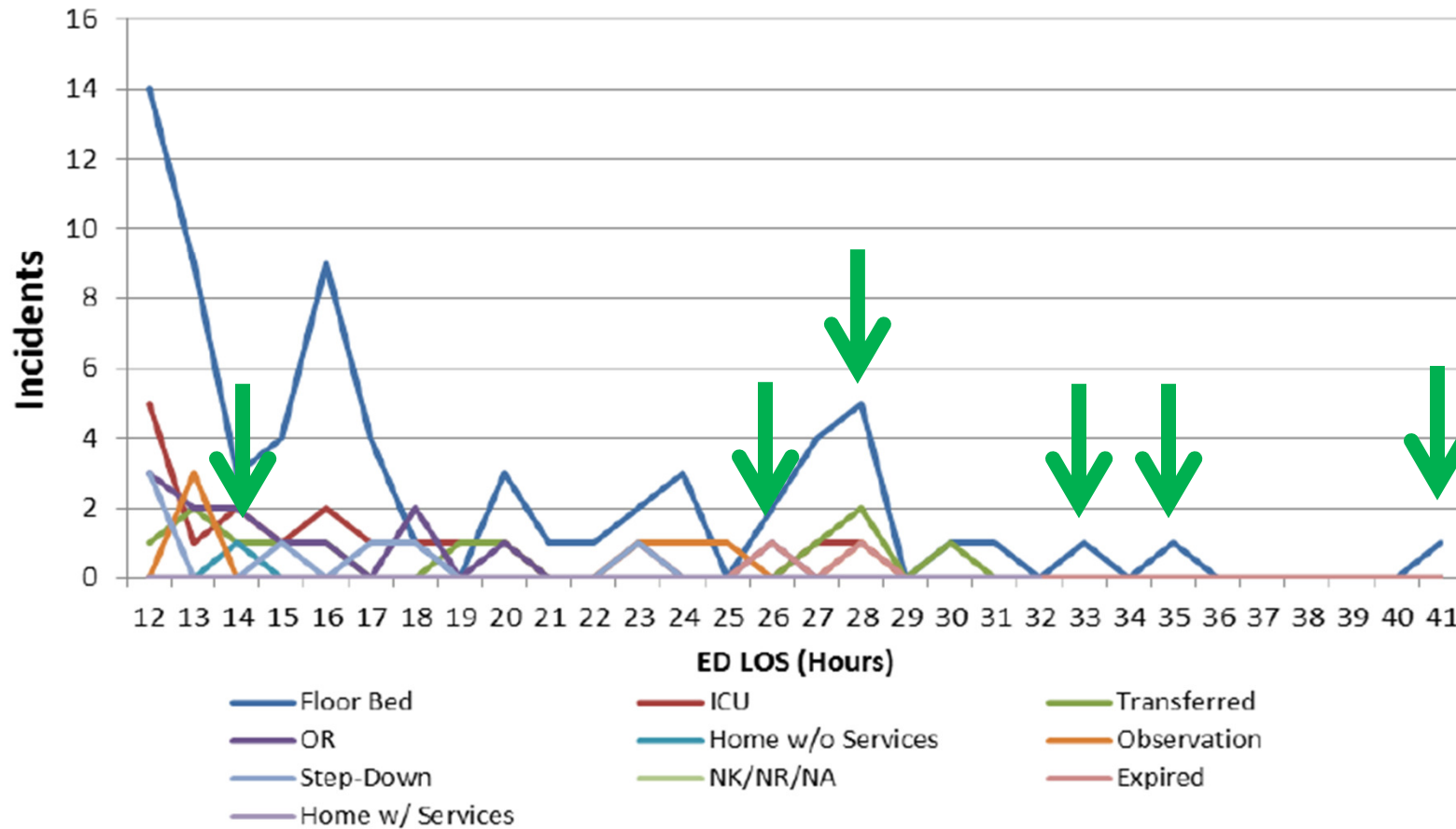
## ED Length of Stay (Hours)



Email questions to: [indianatrauma@isdh.in.gov](mailto:indianatrauma@isdh.in.gov)

# ED LOS > 12 Hours - Page 3

## ED Disposition for ED LOS >12 Hours



N=91

\*Two cases expired: one at 26 hours and the other at 28 hours

# ED LOS > 12 Hours - Page 4

## ED LOS > 12 Hours, N=91

Facilities	42 Level I and II 15 Level III 34 Non-trauma Centers	ISS	52 (1-8 cat); 26 (9-15 cat); 8(16-24); 2 (25-44); 3 (No ISS)
Average Distance from Scene to Facility	7.1 Miles	RTS—Systolic	4 (3-4)
Transport Type	73 Ambulance; 1 Helicopter, 16 Private Vehicle/Walk-In; 1 NK/NR	RTS—GCS Scale	3.9 (1-4)
Trauma Type	85 Blunt; 6 Penetrating	RTS—Resp. Scale	3 (3-4)
Cause of Injury	58 Fall; 14 MVC; 6 Struck by, Against; 5 Firearm; 7 Transport; 1 Cut/Pierce	RTS	7.5 (4.7-7.8)
Signs of Life	85 Yes; 1 No; 5 NA	B Value	3.89 (0.0-5.7)
Age	57.4 Years (0.1-97 Years)	Ps	0.97 (0.37-0.997)
Gender	49 Female; 42 Male;	Resp. Assistance	12 Yes; 79 No
Interfacility Transfer	9 Yes; 82 No	ED LOS	17.9 (12-40.7)
Region	20 North; 49 Central; 10 South; 2 Missing	ED Disposition	47 Floor bed; 1 Home w/o services; 13 ICU; 7 Observation; 8 OR; 1 Other; 7 Step-down; 7 Transferred

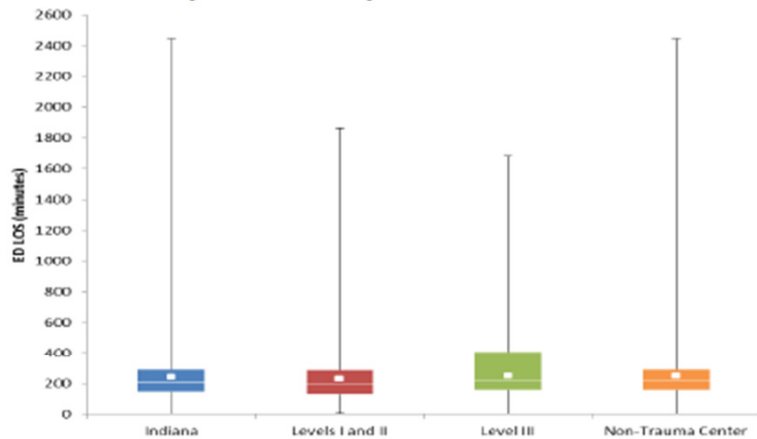
-Region was created from injury zip code. Missing = no injury zip or injury zip from out of state.

-Numbers represent counts per category or mean with minimum and maximum in parentheses.

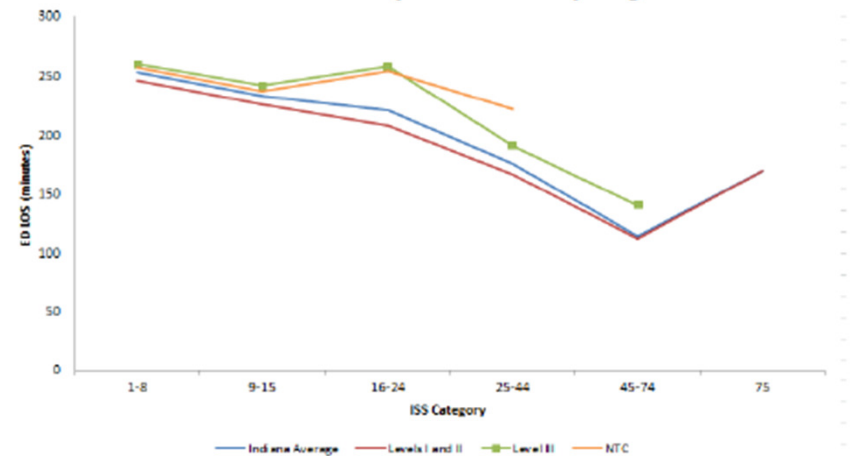


# ED Length of Stay: Bar & Whisker - Page 5

## ED LOS (Minutes) - All Patients



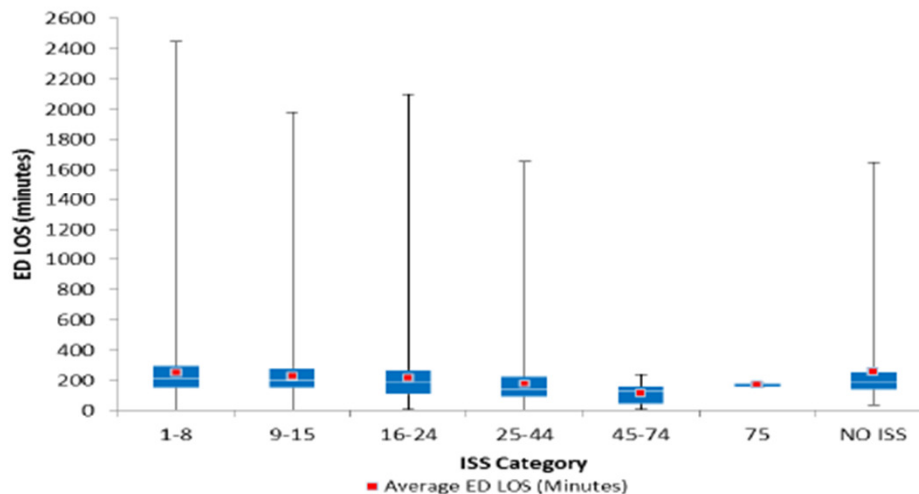
## ED LOS (Minutes) by ISS



A table with all the values for ED LOS is found on page 47.

## ED LOS (Minutes) by ISS

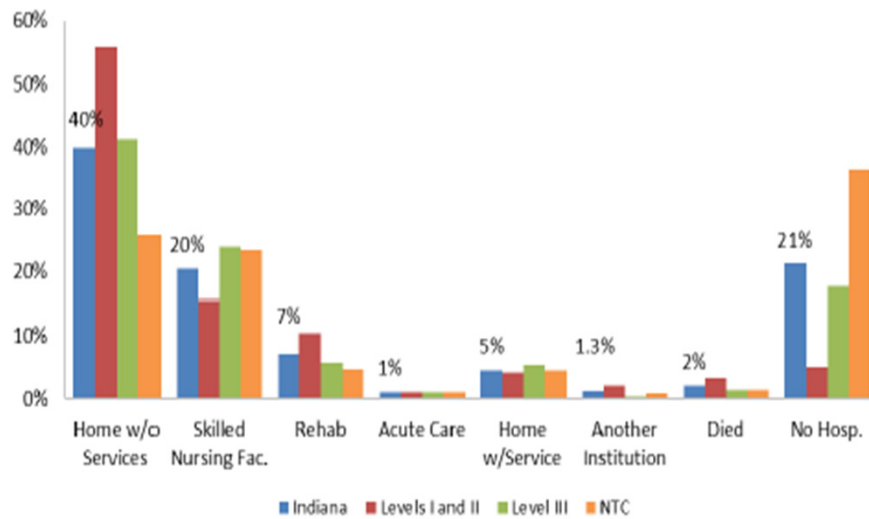
Note for EDLOS by ISS, there were 2 cases with ISS of 75; neither were at non-trauma centers.



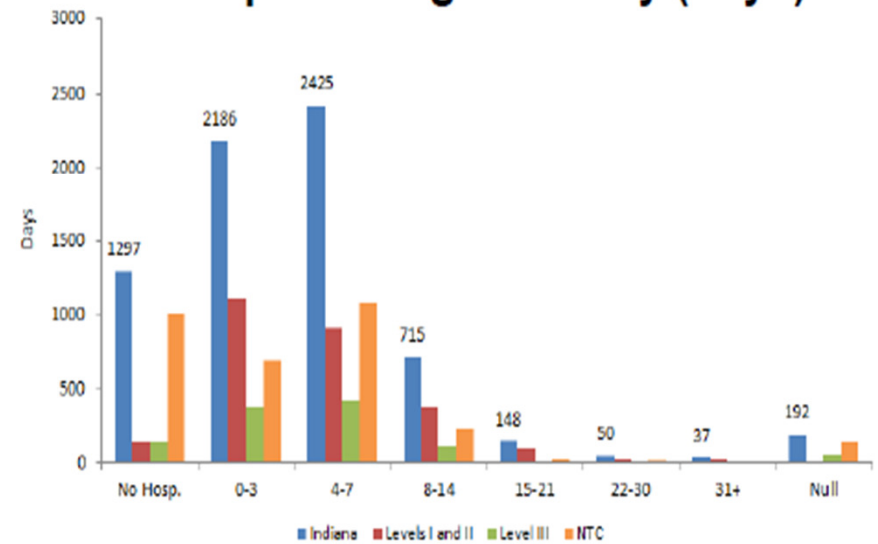
A table with values for ED LOS by ISS may be found on page 48.

# Hospital Disposition and LOS - Page 6

## Hospital Disposition



## Hospital Length of Stay (days)

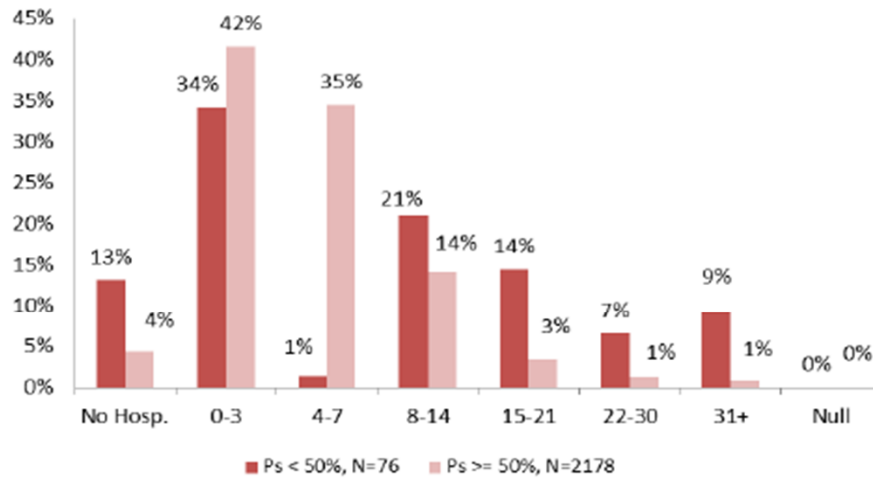


\*There are new categories for the Hospital Disposition for the 2014 Data Dictionary <1%: null, psych., long term care hospital, AMA, hospice and intermediate care.

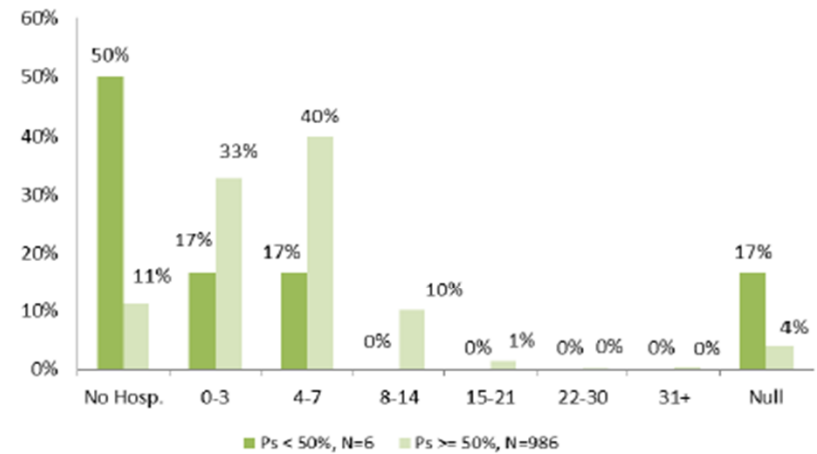
Email questions to: [indianatrauma@isdh.in.gov](mailto:indianatrauma@isdh.in.gov)

# Hospital LOS by Ps - Page 7

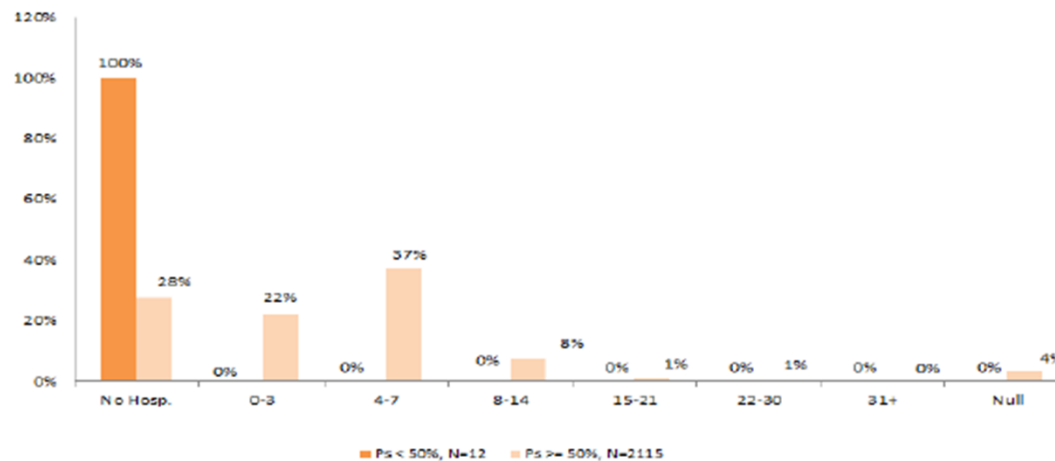
## Hospital LOS (days) by Ps Levels I and II



## Hospital LOS (days) by Ps Level III



## Hospital LOS (days) by Ps Non-Trauma Centers



Email questions to: [indianatrauma@isdh.in.gov](mailto:indianatrauma@isdh.in.gov)

# ED Disposition Expired - Page 8

## ED Disposition of Expired for Ps $\geq$ 50%, N=5

<b>Facilities</b>	3 Non-Trauma Centers 2 Trauma Centers	<b>ISS</b>	2 (1-8 cat.); 3 (9-15 cat.)
<b>Average Distance from Scene to Facility*</b>	22.5 Miles	<b>RTS—Systolic</b>	3.20 (1-4)
<b>Transport Type</b>	4 Ground ambulance; 1 Helicopter;	<b>RTS—GCS Scale</b>	1.8 (0-4)
<b>Trauma Type</b>	5 Blunt	<b>RTS—Resp. Scale</b>	2.4 (0-3)
<b>Cause of Injury</b>	2 Falls; 3 MVC	<b>RTS</b>	4.6 (1.6-7.6)
<b>Signs of Life</b>	3 Yes; 2 Missing	<b>B Value</b>	1.9 (0.1-3.3)
<b>Age</b>	53.4 Years (15-91 Years)	<b>Ps</b>	0.8 (0.5-0.96)
<b>Gender</b>	1 Female; 4 Male	<b>Resp. Assistance</b>	3 Yes; 2 No
<b>Interfacility Transfer</b>	1 Yes; 4 No	<b>ED LOS</b>	2.7 hours (0.12-5.62 hours)
<b>Region</b>	1 North; 1 South; 3 Missing		

- Region was created from injury zip code. Missing = no injury zip or injury zip from out of state.
- Numbers represent counts per category or mean with minimum and maximum in parentheses.



# Trauma Centers - Page 9

## ED Dispo ≠ Expired, Hospital Dispo = Expired for Ps ≥ 50%, N=69, Trauma Centers

Interfacility Transfer	23 Yes	Interfacility Transfer	46 No
Average Distance from Scene to Facility	20.2 Miles	Average Distance from Scene to Facility	8.5 Miles
Transport Type	15 Ambulance; 7 Helicopter; 1 NK/NR	Transport Type	37 Ambulance; 6 Helicopter; 3 Private Vehicle
Trauma Type	15 Blunt; 2 Penetrating; 4 Burn; 2 Other	Trauma Type	40 Blunt; 2 Penetrating; 4 Other
Cause of Injury	12 Fall; 2 MVC; 2 Firearm; 4 Fire/Burn; 1 Transport; 2 Not Categorized	Cause of Injury	24 Fall; 14 MVC; 2 Firearm; 1 Transport; 1 Struck By, Against; 4 Not Categorized
Signs of Life	17 Yes; 6 Unknown	Signs of Life	33 Yes; 2 No; 11 Unknown
Age	73.5 Years (22-93 Years)	Age	71 Years (1-98 Years)
Gender	8 Female; 15 Male	Gender	22 Female; 24 Male
Region	2 North; 11 Central; 4 South; 6 missing	Region	7 North; 24 Central; 5 South; 10 Missing
ISS	3 (1-8); 7 (9-15); 1 (16-24); 10 (25-44); 1 (45-74); 1 (75)	ISS	5 (1-8); 14 (9-15); 7 (16-24); 19 (25-44); 1 (45-74)
RTS—Systolic	4 (4-4)	RTS—Systolic	4.0 (3-4)
RTS—GCS Scale	2.6 (0-4)	RTS—GCS Scale	3.2 (0-4)
RTS—Resp. Scale	3 (3-3)	RTS—Resp. Scale	3.1 (3-4)
RTS	6.3 (3.8-7.6)	RTS	6.8 (3.8-7.8)
B Value	1.7 (0.05-3.5)	B Value	2.2 (0.2-4.2)
Ps	0.8 (0.5-0.97)	Ps	0.8 (0.6—0.99)
Resp. Assistance	13 Yes; 9 No; 1 NK/NR	Resp. Assistance	16 Yes; 28 No; 2 Unknown
ED LOS	1.8 Hours (0.3-3.9 Hours)	ED LOS	3.7 Hours (0.5-8.1 Hours)

-Region was created from injury zip code. Missing = no injury zip or injury zip from out of state.

-Numbers represent counts per category or mean with minimum and maximum in parentheses.



# Non-Trauma Centers - Page 10

ED Dispo ≠ Expired, Hospital Dispo = Expired for Ps ≥ 50%, N=36, Non-trauma Centers

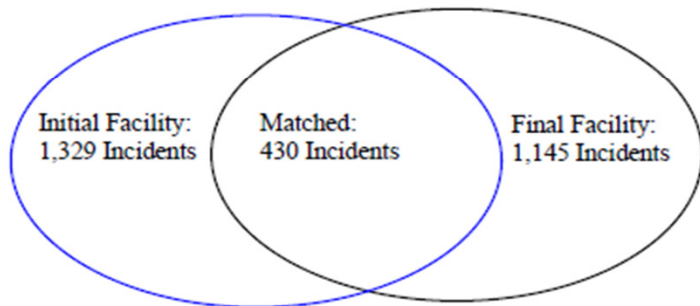
<b>Interfacility Transfer</b>	36 No
<b>Average Distance from Scene to Facility</b>	6.0 Miles
<b>Transport Type</b>	32 Ambulance; 1 Private Vehicle; 3 NK
<b>Trauma Type</b>	33 Blunt; 3 Other
<b>Cause of Injury</b>	32 Falls; 1 MVC; 3 Other
<b>Signs of Life</b>	35 Yes; 1 No
<b>Age</b>	79.4 Years (22-97 Years)
<b>Gender</b>	14 Females; 22 Males
<b>Region</b>	18 North; 11 Central; 6 South; 1 Missing
<b>ISS</b>	9 (1-8); 19 (9-15); 5 (16-24); 1 (25-44); 2 Unknown
<b>RTS—Systolic</b>	4.0 (4-4)
<b>RTS—GCS Scale</b>	3.5 (0-4)
<b>RTS—Resp. Scale</b>	3.0 (3-3)
<b>RTS</b>	7.1 (3.8-7.6)
<b>B Value</b>	2.8 (0.3-5.3)
<b>Ps</b>	0.9 (0.6-0.995)
<b>Resp. Assistance</b>	5 Yes; 28 No; 3 Unknown
<b>ED LOS</b>	3.7 Hours (1.9-8.1 Hours)

-Region was created from injury zip code. Missing = no injury zip or injury zip from out of state.

-Numbers represent counts per category or mean with minimum and maximum in parentheses.

# Linking - Page 11

For Quarter 1, 2015, of the 7,050 incidents reported to the Indiana Trauma Registry, 1,329 cases that had an ED Disposition of “Transferred to another acute care facility” at the initial facility or that had the Inter-Facility Transfer equal to “Yes” at the Trauma Center. Of those transferred, 430 cases were probabilistically matched. The linked cases make up 17% of the Q1 2015 data. All public health preparedness districts are represented. The diagram below illustrates the overlap between the transfers reported from the initial facility and from the final facility that can be matched.



The initial facility in which transfers come from may be considered Critical Access Hospitals (CAHs). All Indiana CAHs are considered Rural, and must meet additional requirements to have a CAH designation, such as having no more than 25 inpatient beds and being located in a rural area. Facilities that are highlighted indicate that these facilities reported data for Quarter 1, 2015.

Within this transfer data section, the purple columns represent the transfer cases and the single percentages represent the percent for the transfer cases. For two demographic variables, patient age groupings and gender, the Indiana average is included to provide more insight to this transfer population.

## Indiana Critical Access Hospitals (CAHs)

Adams Memorial Hospital	Pulaski Memorial Hospital
Cameron Memorial Community Hospital Inc	Putnam County Hospital
Community Hospital of Bremen Inc	Rush Memorial Hospital
Decatur County Memorial Hospital	Scott Memorial Hospital
Dukes Memorial Hospital	St Vincent Frankfort Hospital Inc
Gibson General Hospital	St Vincent Jennings Hospital Inc
Greene County General Hospital	St Vincent Mercy Hospital
Harrison County Hospital	St Vincent Randolph Hospital Inc
IU Health Bedford Hospital	St Vincent Salem Hospital Inc
IU Health Blackford Hospital	St. Mary's Warrick Hospital Inc
IU Health Paoli Hospital	St. Vincent Clay Hospital Inc
IU Health Tipton Hospital	St. Vincent Dunn Hospital Inc
IU Health White Memorial Hospital	St. Vincent Williamsport Hospital, Inc.
Jasper County Hospital	Sullivan County Community Hospital
Jay County Hospital	Union Hospital Clinton
Margaret Mary Community Hospital Inc	Wabash County Hospital
Parkview LaGrange Hospital	Woodlawn Hospital
Perry County Memorial Hospital	

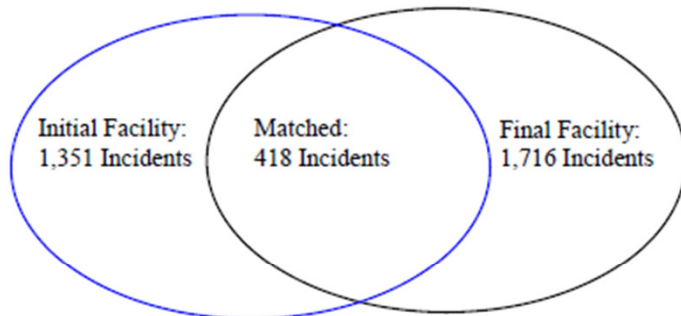
## Rural Hospitals

Columbus Regional Hospital	King's Daughters' Health
Daviess Community Hospital	Kosciusko Community Hospital
Doctor's Neuromedical	Marion General Hospital
Fayette Regional Health System	Memorial Hospital
Franciscan St Anthony Health - Michigan City	Memorial Hospital and Health Care Center
Franciscan St Elizabeth Health - Crawfordsville	Parkview Noble Hospital
Good Samaritan Hospital	Reid Hospital & Health Care Services
Henry County Memorial Hospital	Saint Joseph RMC - Plymouth
Indiana University Health La Porte Hospital	Schneck Medical Center
Indiana University Health Starke Hospital	



# Historical Links - Page 12

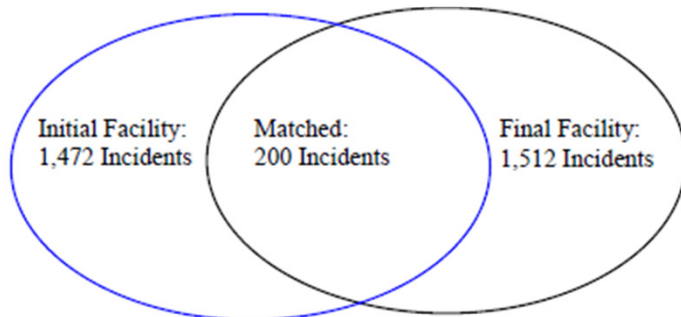
## Historical Links



For Quarter 2, 2014, of the 8,272 incidents reported to the Indiana Trauma Registry, 1,716 cases that had an ED Disposition of “Transferred to another acute care facility” at the initial facility or that had the Inter-Facility Transfer equal to “Yes” at the Trauma Center. Of those transferred, 418 cases were probabilistically matched. The linked cases make up 13.7% of the Q2 2014 data. All public health preparedness districts are represented. The diagram below illustrates the overlap between the transfers reported from the initial facility and from the final facility that can be matched.



For Quarter 3, 2014, of the 8,814 incidents reported to the Indiana Trauma Registry, 1580 cases that had an ED Disposition of “Transferred to another acute care facility” at the initial facility or that had the Inter-Facility Transfer equal to “Yes” at the Trauma Center. Of those transferred, 301 cases were probabilistically matched. The linked cases make up 9.1% of the Q3 2014 data. All public health preparedness districts are represented. The diagram below illustrates the overlap between the transfers reported from the initial facility and from the final facility that can be matched.



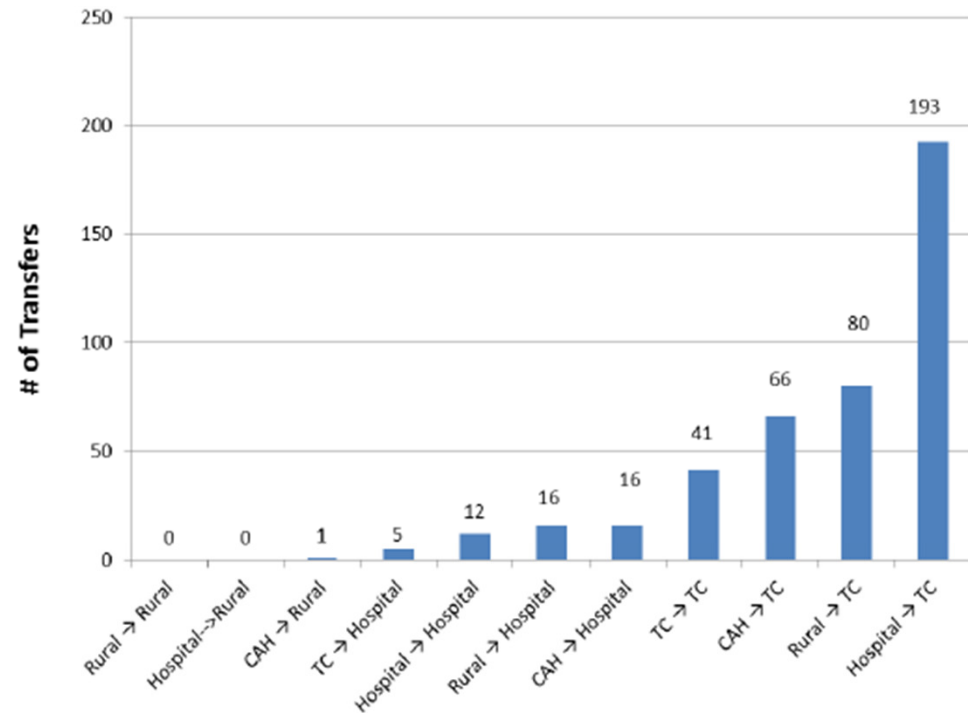
For Quarter 4, 2014, of the 8,052 incidents reported to the Indiana Trauma Registry, 1472 cases that had an ED Disposition of “Transferred to another acute care facility” at the initial facility or that had the Inter-Facility Transfer equal to “Yes” at the Trauma Center. Of those transferred, 200 cases were probabilistically matched. The linked cases make up 6.7% of the Q4 2014 data. All public health preparedness districts are represented. The diagram below illustrates the overlap between the transfers reported from the initial facility and from the final facility that can be matched.

# Transfer Patient: Facility Type - Page 13

## Facility to Facility Transfers

For Transfer Patients:		
Initial Hospital Type	Final Hospital Type	Incident Counts
Rural Hospital	Rural Hospital	0
Hospital	Rural Hospital	0
Critical Access Hospital	Rural	1
Trauma Center	Hospital	5
Hospital	Hospital	12
Rural	Hospital	16
Critical Access Hospital	Hospital	16
Trauma Center	Trauma Center	41
Critical Access Hospital	Trauma Center	66
Rural Hospital	Trauma Center	80
Hospital	Trauma Center	193

## Facility Transfer Type



Rural = Rural Hospital; TC = ACS Verified or In Process Trauma Center;

CAH = Critical Access Hospital; Hospital = does not fall into above categories

# Linked Transfer Patient Averages - Page 14

## For Linked Transfer Patients:

For Transfer Patients:					
	All Transfer Patients	Critical*	Physiological Critical**	ISS Critical***	<u><i>Ps &lt;0.5****</i></u>
Number of Patients	430	415	414	38	2
EMS Notified to Scene	11.1 minutes	7.7 minutes	7.8 minutes	8.0 minutes	10.5 minutes
EMS Scene Arrival to Departure	16.9 minutes	16.3 minutes	16.3 minutes	15.8 minutes	8.5 minutes
EMS Scene Departure to Initial Hospital ED Arrival	17.1 minutes	16.9 minutes	16.7 minutes	17.2 minutes	10 minutes
Initial Hospital ED Arrival to Departure	3 hours 0.5 minutes	3 hours 4.3 minutes	3 hours 5.6 minutes	2 hours 34.4 minutes	1 hour 39 minutes
Initial Hospital ED Departure to Final Hospital ED Arrival	57.8 minutes	57.5 minutes	57.1 minutes	55.1 minutes	48 minutes
TOTAL TIME	4 hours 43.4 minutes	4 hours 42.7 minutes	4 hours 43.5 minutes	4 hours 10.5 minutes	2 hours 56 minutes

\*Critical patient is defined as having a GCS  $\leq$  12, OR Shock Index  $>$  0.9 OR ISS  $>$  15 at the initial hospital.

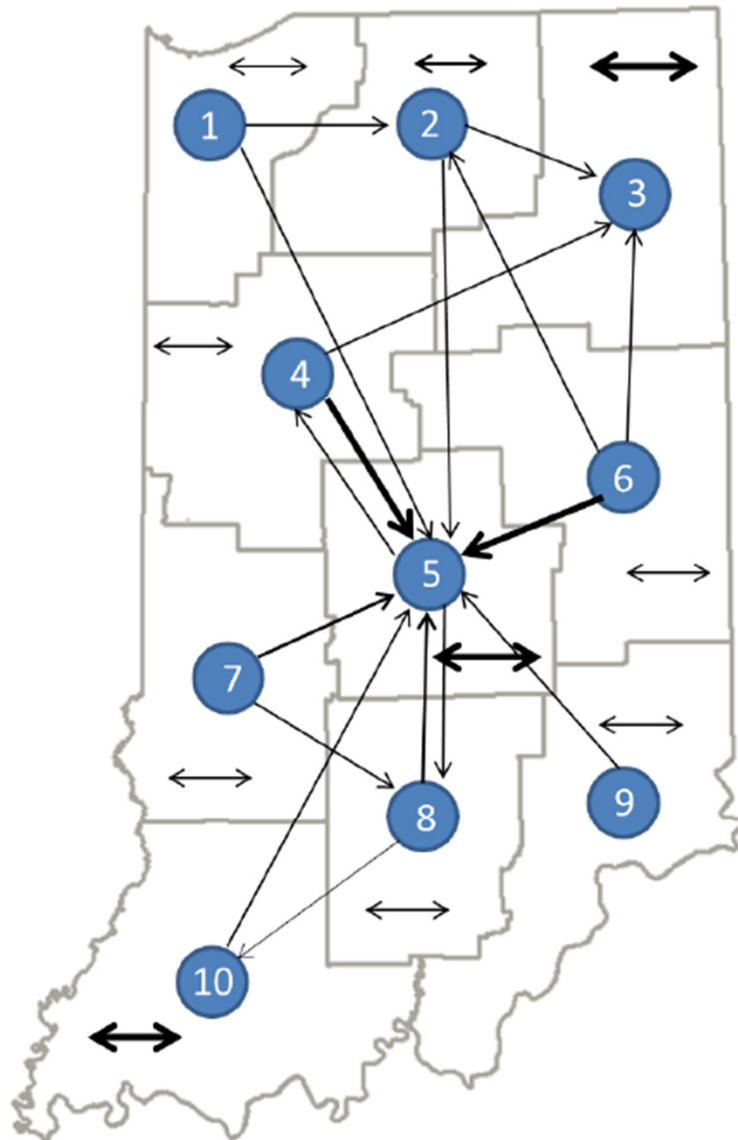
\*\*Physiological Critical Transfer patient is defined as having a Shock Index  $>$  0.9 OR GCS  $\leq$  12 at the initial hospital.

\*\*\*ISS Critical Transfer patient is defined as having an ISS  $>$  15.

\*\*\*\*Patients with a probability of survival  $\leq$  0.5.



# Transfer Patient Data - Page 15



## For Transfer Patients:

Public Health Preparedness District Initial Hospital	Public Health Preparedness District Final Hospital	Incident Counts
1	1	7
1	2	6
1	5	3
2	2	17
2	3	4
2	5	7
3	3	80
4	3	2
4	4	9
4	5	37
5	4	1
5	5	63
5	8	3
6	2	1
6	3	2
6	5	52
6	6	9
7	5	33
7	7	2
7	8	1
8	5	22
8	8	9
8	10	2
9	5	8
9	9	1
10	5	1
10	10	48

\*The thickness of the line indicates the frequency of transfers out of or within the public health preparedness district. The circles represent transfers from a specific PHPD, not of a specific hospital or county. 8.50 in

# Transfer Patient Data - Page 16

## For Linked Transfer Patients:

For Transfer Patients:					
	All Transfer Patients	<i>Critical*</i>	<i>Physiological Critical**</i>	<i>ISS Critical***</i>	<u><i>Ps &lt;0.5****</i></u>
<b>Number of Patients</b>	430	415	414	38	2
<b>Total Time</b>	4 hours 43.4 minutes	4 hours 42.7 minutes	4 hours 43.5 minutes	4 hours 10.5 minutes	2 hours 56 minutes
<b>Total Mileage</b>	53.8	54.1	54.2	59.8	77.4
<b>Injury Scene to Initial Hospital Mileage***</b>	8.1	8.1	8.1	7.3	9.7
<b>Initial Facility to Final Facility Mileage</b>	45.7	46	46	52.5	67.7

Estimated Average Distance (miles) by Region (region of final hospital):					
Region	Injury Scene to Initial Facility Mileage†	Initial Facility to Final Facility Mileage	Total Mileage	Drive Count	Air Count
<b>Indiana Average</b>	8.1	45.7	53.8	372	58
<b>North Region</b>	7.2	44.7	51.9	189	22
<b>Central Region</b>	8.3	47.9	56.3	99	23
<b>South Region</b>	9.6	45.2	54.8	84	13

\*Critical patient is defined as having a GCS  $\leq$  12, OR Shock Index  $>$  0.9 OR ISS  $>$  15 at the initial hospital.

\*\*Physiological Critical Transfer patient is defined as having a Shock Index  $>$  0.9 OR GCS  $\leq$  12 at the initial hospital.

\*\*\* ISS Critical Transfer patient is defined as ISS  $>$  15 at the initial hospital.

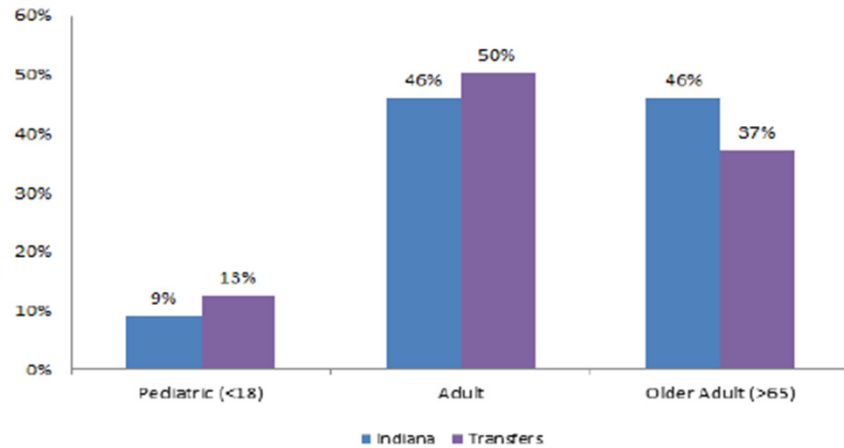
\*\*\*\*Probability of Survival  $<$  0.5

†Injury Scene to Initial Facility Mileage location estimated by zip code centroid

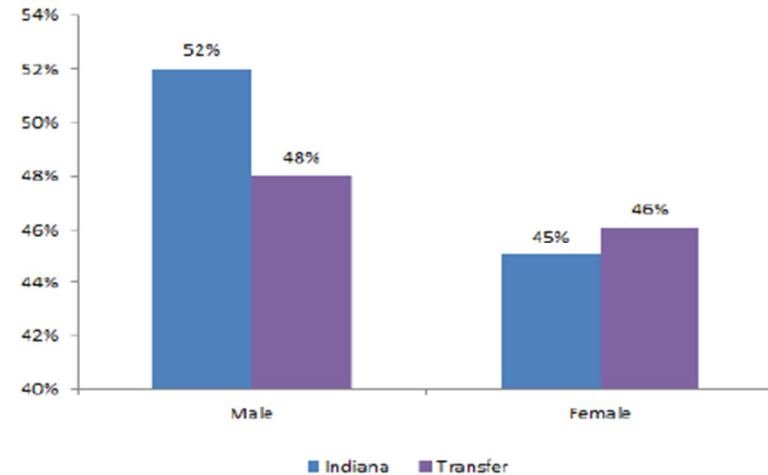
Statistics for Estimated Average Distance by Region calculated by Public Health Geographics, Epidemiology Resource Center, ISDH

# Transfer Patient Population - Page 17

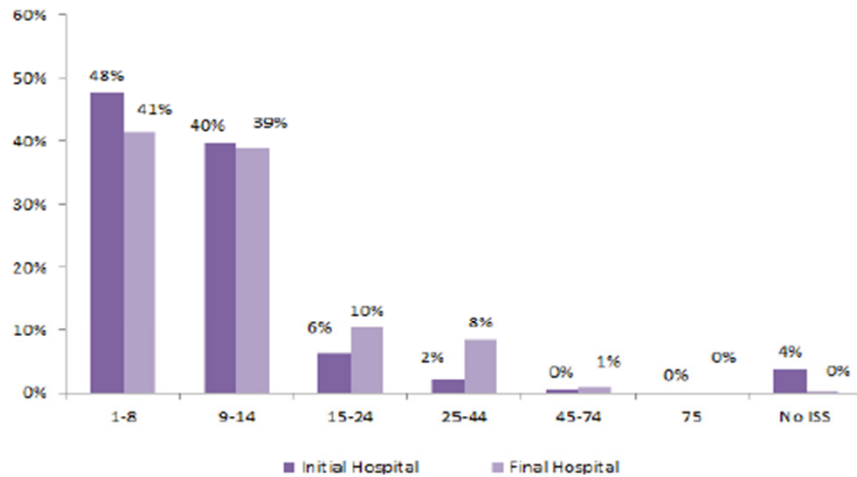
## Patient Age Groupings



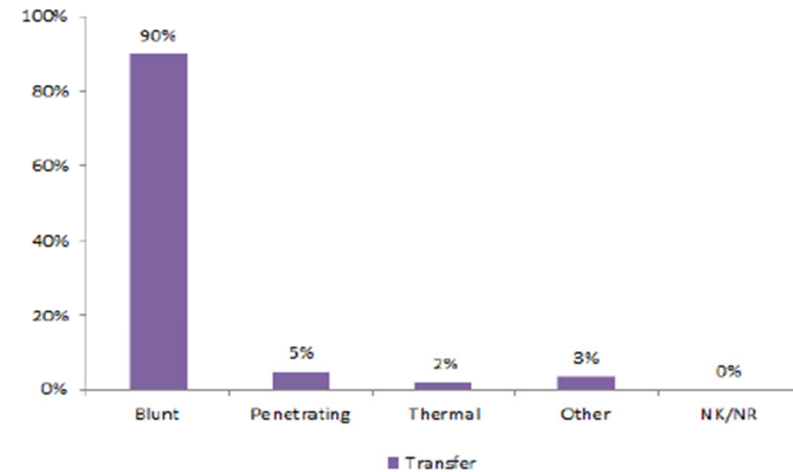
## Patient Gender



## Injury Severity Score (ISS)

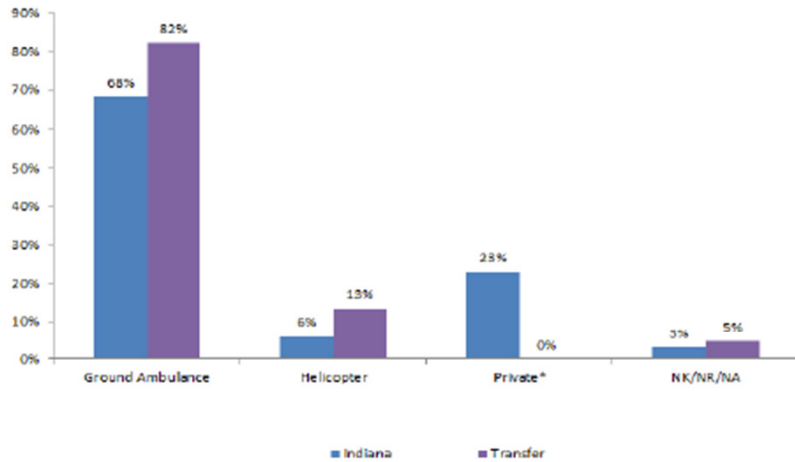


## Trauma Type- Final Hospital



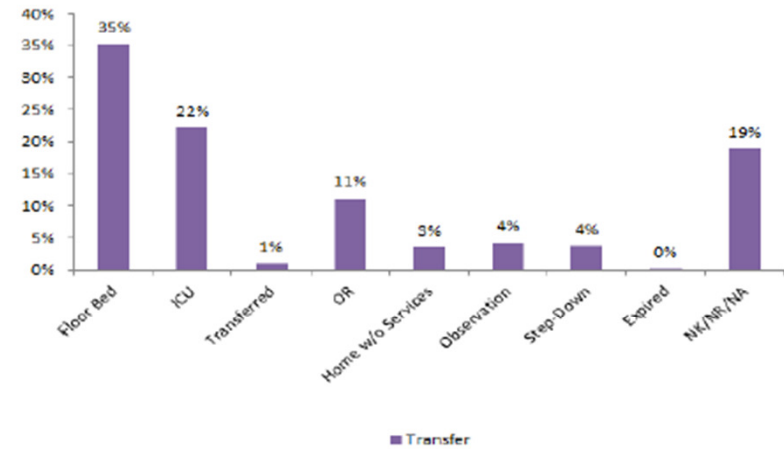
# Transfer Patient Population - Page 18

## Transport Mode- Final Hospital

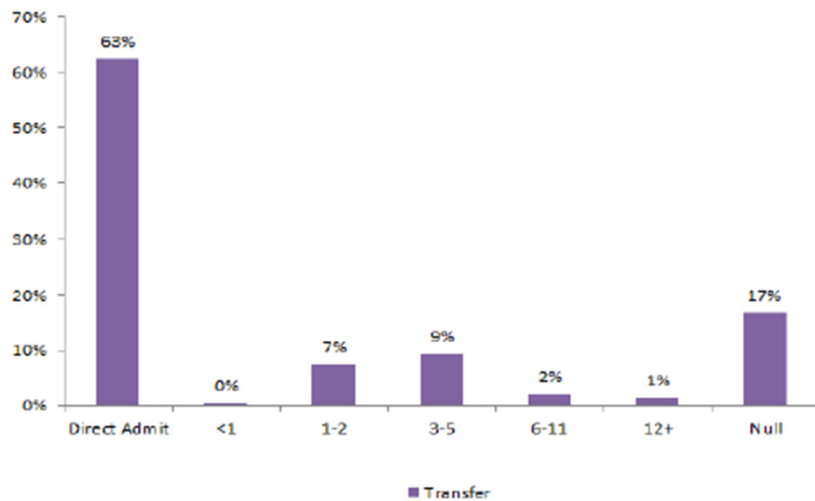


<1% Transport Mode: Police, Other \* Indicates Private/ Public Vehicle, Walk-in

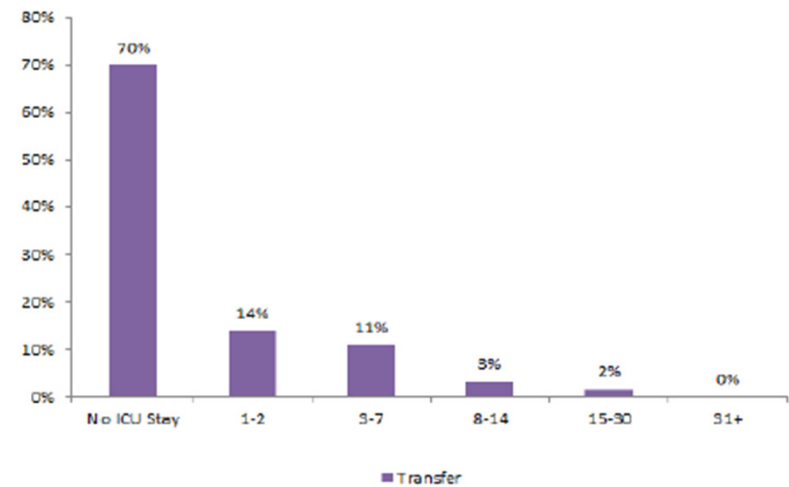
## ED Disposition by Percentage- Final Hospital



## ED Length of Stay (hours)- Final Hospital



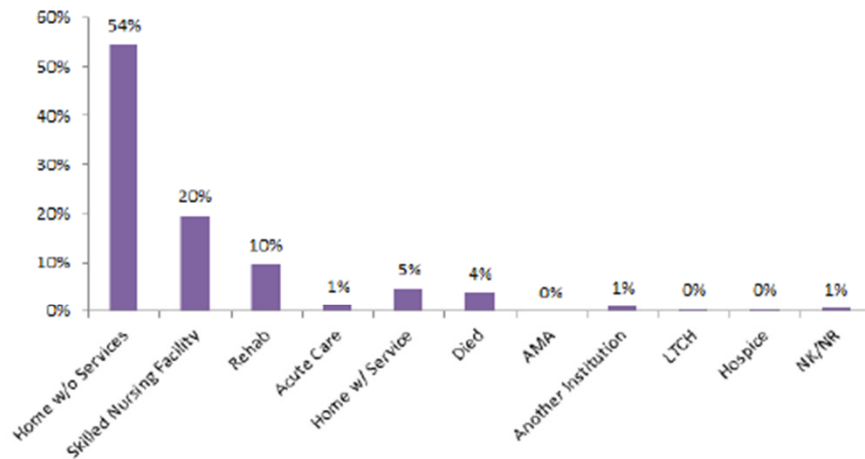
## ICU Length of Stay (days)- Final Hospital



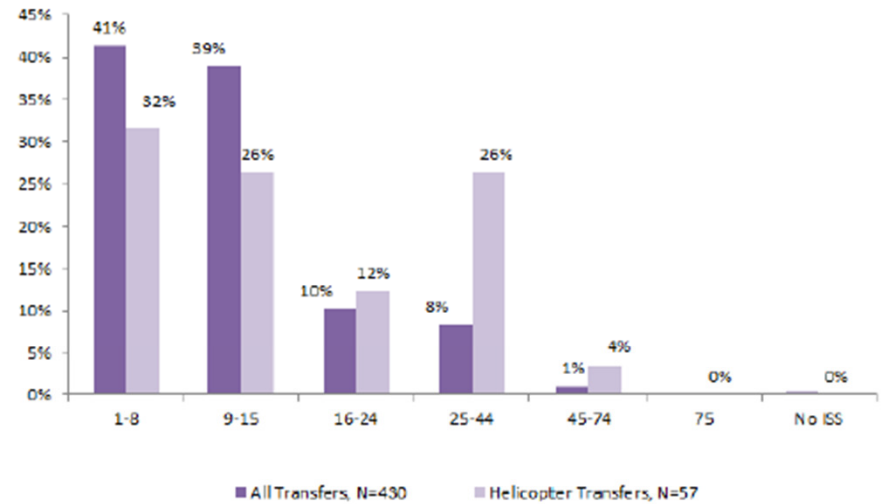


# Transfer Patient Population - Page 19

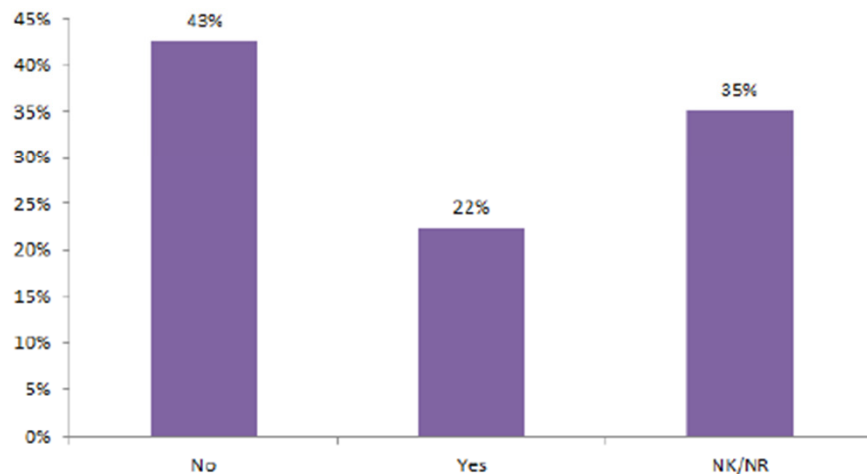
## Discharge Disposition- Final Hospital



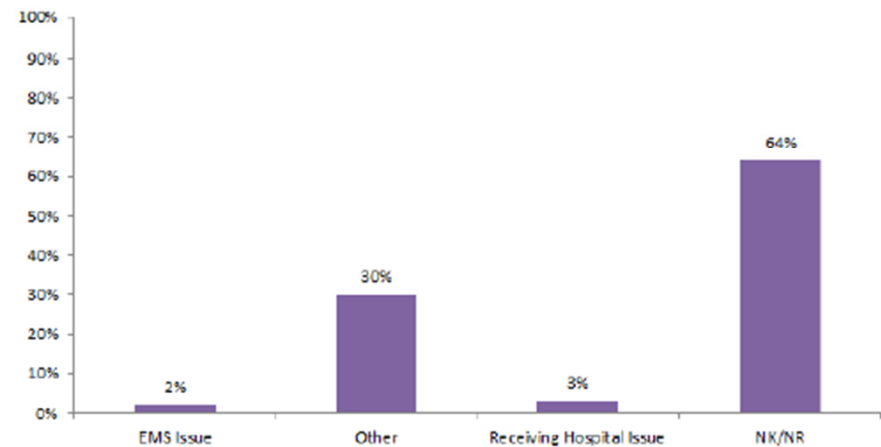
## Helicopter Transfers by ISS- Final Hospital



## Transfer Delay Indicated- Initial Hospital



## Initial Facility Transfer Delay Reason



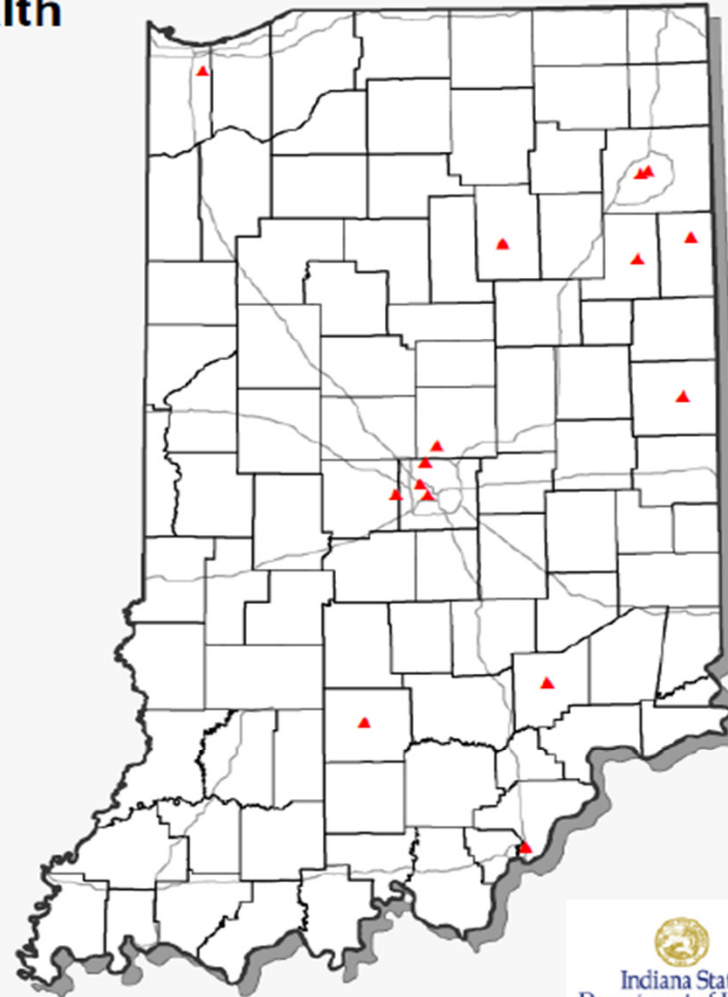


# Not Reporting Map - Page 20

## Indiana State Department of Health Indiana Trauma Registry

Hospitals Not Reporting Trauma Data  
to the Indiana Trauma Registry

Adams Memorial Hospital  
Bluffton Regional Medical Center  
Community Westview Hospital  
IU Health - West Hospital  
Kentuckiana Medical Center  
Parkview Wabash Hospital  
Richard L Roudebush VA Medical Center  
St. Joseph Hospital (Fort Wayne)  
St. Mary Medical Center Hobart  
St. Vincent - Carmel Hospital  
St. Vincent - Dunn Hospital  
St. Vincent - Fishers Hospital  
St. Vincent - Jennings Hospital  
St. Vincent - Peyton Manning Children's Hospital  
St. Vincent - Randolph Hospital  
VA Northern IN Healthcare System



Not reporting as of 7/15/2015

Map Author: ISCH/ERC/PHG and ISDH Trauma & Injury Prevention - July 2015

# Reporting Map - Page 50

## Indiana State Department of Health Indiana Trauma Registry

Hospitals Reporting Trauma Data

Quarter 1, 2015

January 1 - March 31, 2015

### **I II** Level I and II Trauma Centers

Deaconess Hospital  
Eskenazi Health  
IU Health - Methodist Hospital  
Memorial Hospital of South Bend  
Parkview Regional Medical Center  
Riley Hospital for Children at IU Health  
St. Mary's Medical Center of Evansville  
St. Vincent Indianapolis Hospital

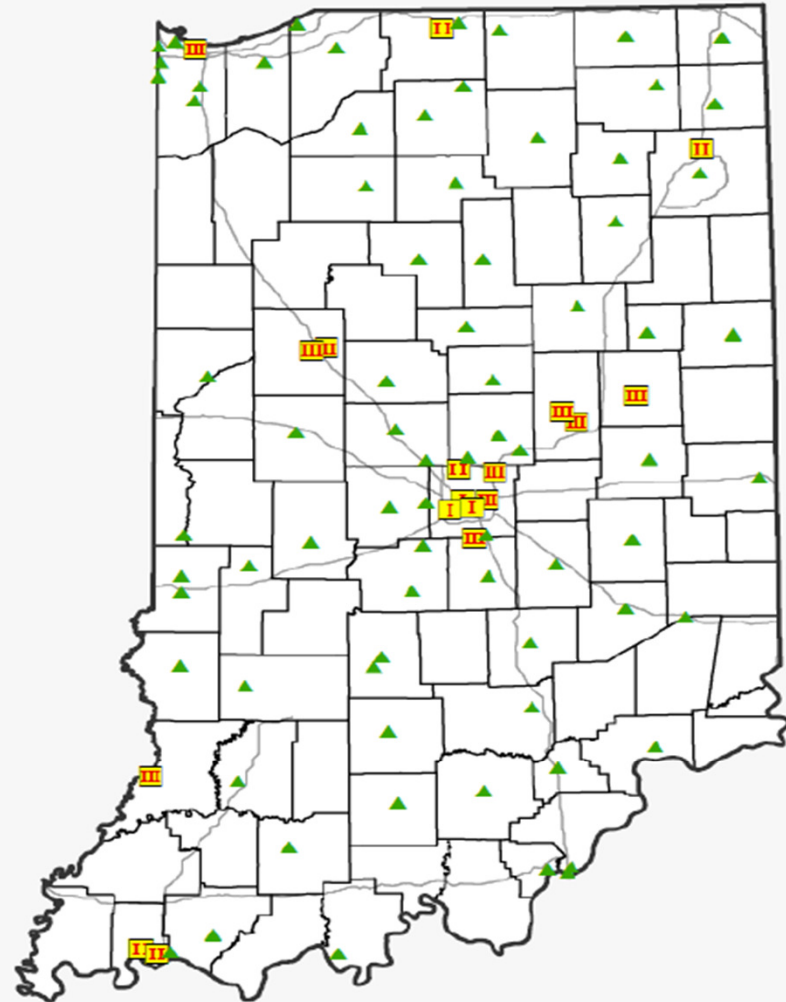
### **III** Level III Trauma Centers

Community Hospital of Anderson  
Community Hospital - East  
Community Hospital - North  
Community Hospital - South  
Franciscan St. Elizabeth East Hospital  
Good Samaritan Hospital  
IU Health - Arnett Hospital  
IU Health - Ball Memorial Hospital  
Methodist Hospital - Northlake Campus  
St. Vincent Anderson Regional Hospital

### **▲** Non-Trauma Hospitals

76 Non-Trauma Hospitals

Hospital categories include Verified and "In the Process" Trauma Centers



Map Author: ISDH EAC PHG and ISDH Trauma & Injury Prevention - July 2015

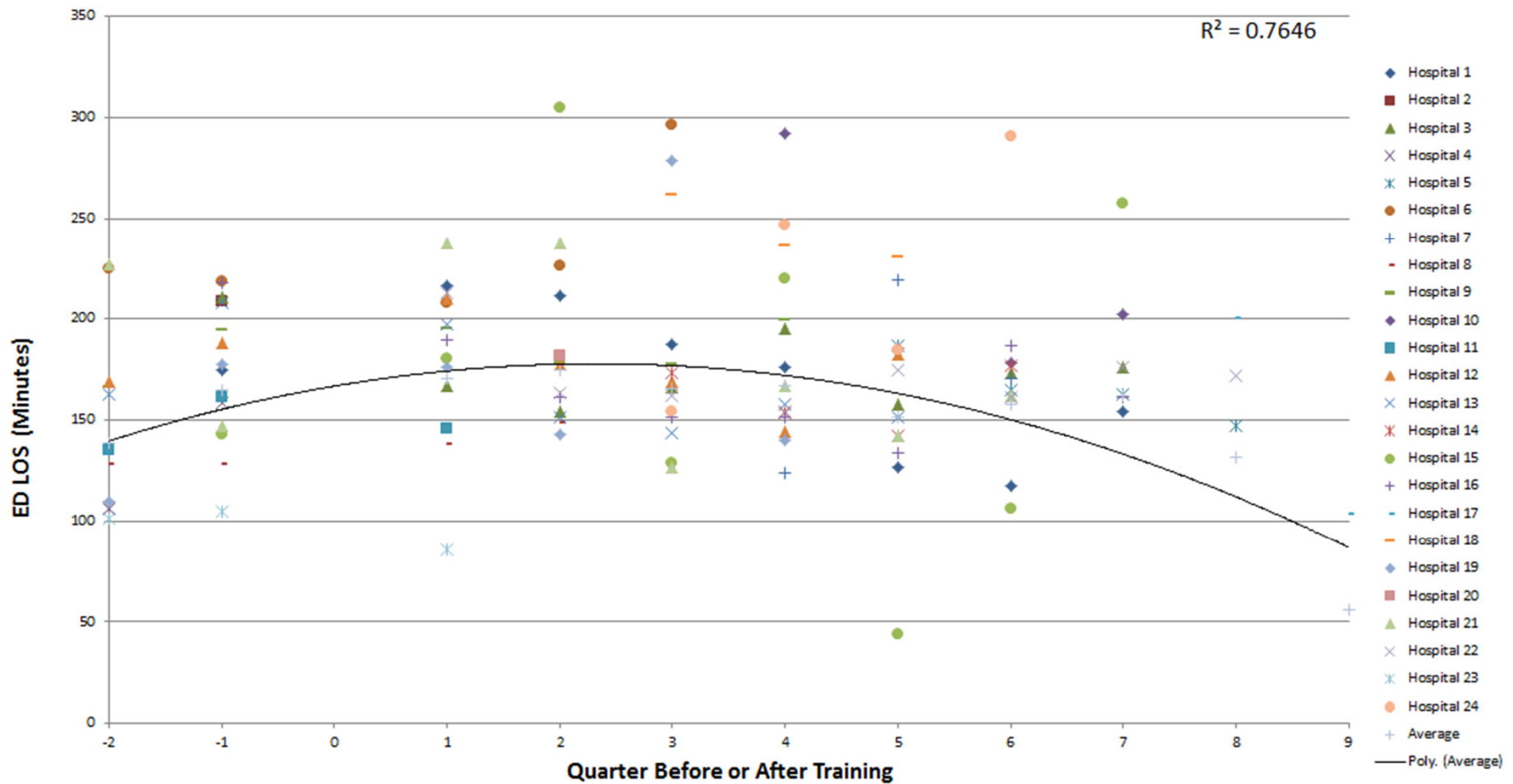
# Linked Data Between Trauma & EMS

- 1,238 probabilistically linked cases for Q1 2015 between the EMS Registry and Trauma Registry

Email questions to: [indianatrauma@isdh.in.gov](mailto:indianatrauma@isdh.in.gov)

# Rural Trauma Team Development Course (RTTDC)

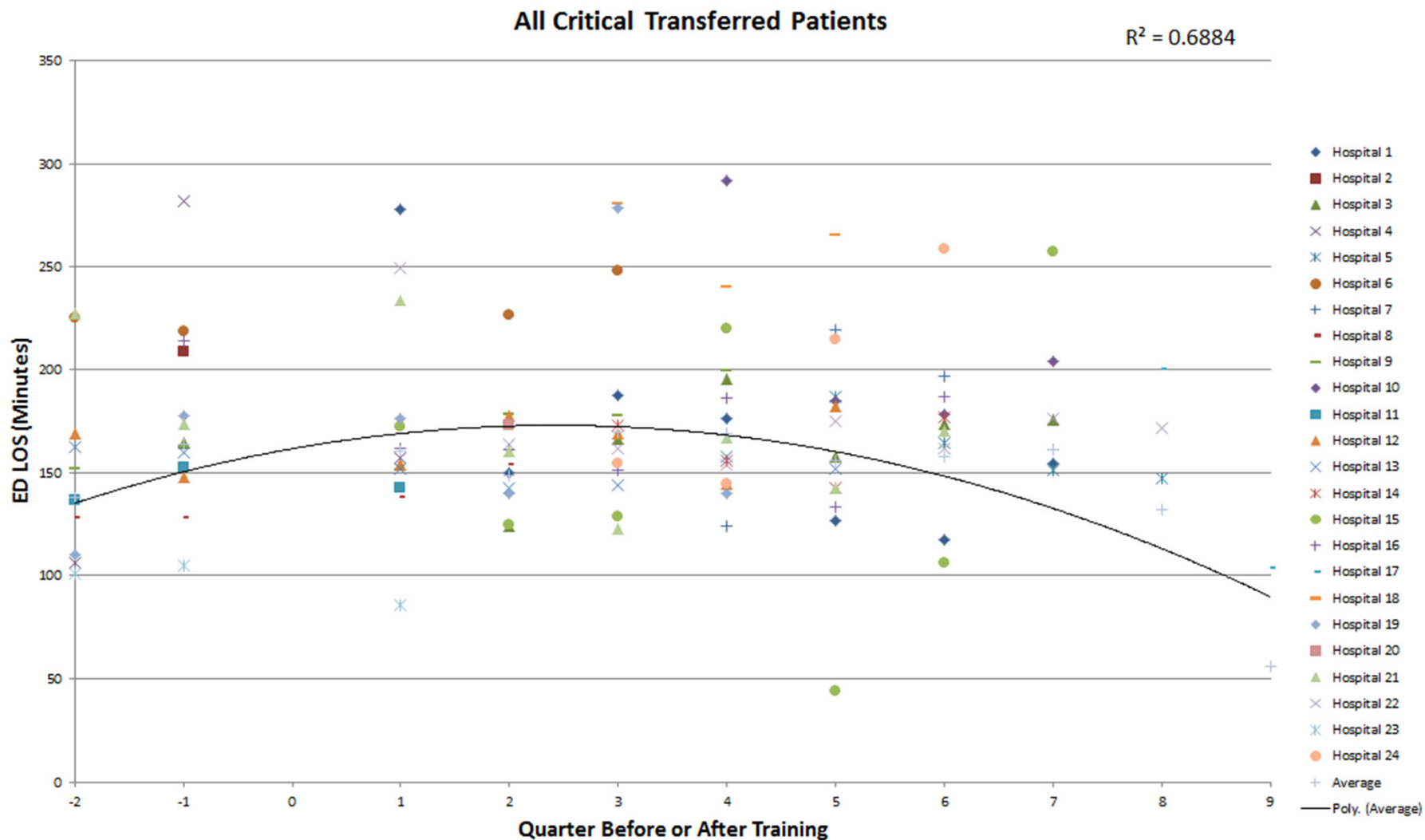
All Transferred Patients



\*This ED LOS analysis was done for facilities who had taken the RTTDC course.



# RTTDC – Critical Patients



•This ED LOS analysis was done for facilities who had taken the RTTDC course.  
 •Critical patients had a GCS  $\leq 12$  or Shock Index  $> 0.9$  or Injury Severity Score  $> 15$  at the initial hospital.



# Questions?



Indiana State  
Department of Health